

7. Appendix

Table A - 1. Worldwide PC sales, by country, 2013 – 2020	3
Table A - 2. Worldwide PC sales percentage, by segment, Q1 2019.....	3
Table A - 3. Worldwide EV sales, by key markets, 2013-2020.....	3
Table A - 4. Worldwide BEV sales, by type and class, 2020.....	4
Table A - 5. Europe PC sales, by type and class, 2020	4
Table A - 6. USA PC sales, by type, 2020 - 2019	5
Table B - 1. Electric motors characteristics	6
Table B - 2. BEVs battery weight.....	6
Table B - 3. BEV models price, type and platform.....	7
Table B - 4. BEVs technical specifications.....	9
Table B - 5. BEVs battery specifications.....	10
Table B - 6. BEVs battery energy density.....	11
Table B - 7. ICEV - BEV weight comparison [percentage]	12
Table B - 8. BEV-ICEV price comparison	13
Table C - 1. Total Cost Distribution	14
Table C - 2. Applied Indirect Cost Multipliers	14
Table C - 3. R.M. Cuenca Indirect Cost Multipliers.....	14
Table C - 4. ANL Indirect Cost Multipliers	15
Table C - 5. Boroni Bird Indirect Cost Multipliers	15
Table C - 6. EEA equivalent Indirect Cost Multipliers	15
Table C - 7. RPE 2007 Indirect Cost Multipliers	15
Table C - 8. McKinsley RPE Indirect Cost Multipliers.....	15
Table C - 9. Powertrain manufacturing costs.....	16
Table C - 10. Assembly labour costs	16
Table C - 11. Assembly time	16
Table C - 12. Manufacturing cost percentages applied to Kia Picanto	16
Table C - 13. Chassis manufacturing costs derived from Kia Picanto approximation	17
Table C - 14. Frame and Bodywork manufacturing costs derived from Kia Picanto approximation.....	18
Table X - 1. EU, USA and China BEV model sales, 2020 – 2019	27
Table X - 2. EU PC sales by model and class, 2020-2019	30
Table X - 3. USA PC Sales by model and type, 2020-2019.....	42
Table X - 4. Chinese PC Sales by model, 2020-2019	48

The appendix is divided in various sections, in accordance to the sections discussed in the project. [7.1 Appendix A](#) includes all the relevant information regarding PC sales. [7.2 Appendix B](#) includes technical information of current BEV models, and [7.3 Appendix C](#) explains the cost calculation. [7.3 Appendix D](#) adds some extra information about the product target, and [7.5 Appendix E](#) collects all the design renderings and dimensions. [7.6 Appendix X](#) includes extensive data about specific model sales.

The next table summarises the specifications detailed in [Section 3](#).

Table 1. Design Specifications

Body style, dimensions, volumes and weights		Electric motor	
Body style	Hatchback	Type	PMSM
Materials	Steel	Location	Rear
Number of doors	4 + rear window hatch	Power	50 kW
Number of seats	5	Torque	150 Nm
Length	3450 mm	Regenerative braking	Yes
Width	1650 mm	Battery	
Width with mirrors	1800 mm	Type	Lithium-Ion, pouch cell
Height	1450 mm	Capacity	25 kWh
Wheelbase	2750 mm	Location	Under the floor, mid- rear
Track	1495 mm	Suspension	
Curb weight (approx.)	1150 kg	Front	Independent, McPherson
Performance		Rear	Semi-Indep., torsion bar
Driving range (WLTP)	180 km	Brakes	
Top Speed	115 km/h	Front	Steel discs, 250 mm
0-100 km/h	12 s	Rear	Drum brakes, 180 mm
Steering		Transmission	
Type	Electronic rack and pinion	Type	Single-speed auto.
Additional Features			
Safety and assistance	Airbags front driver/pass.	Safety and assistance	B.pilar airbags
Safety and assistance	ABS	Safety and assistance	Intelligent speed assistance
Safety and assistance	Daytime Running Lights (DRL)	Safety and assistance	Alcohol interlock installation facilitation
Safety and assistance	Reversing detection system	Safety and assistance	Advanced driver distraction warning system
Safety and assistance	Event data recorders	Safety and assistance	Accurate tyre pressure monitoring.
Safety and assistance	Advanced emergency braking system	Safety and assistance	Emergency lane-keeping system
Infotainment and connectivity	LCD instrument cluster	Infotainment and connectivity	Smartphone connectivity (needed for radio and heater control)
Seats	Front seats with mechanical backrest and length adjustment	Seats	Folding single rear bench
Steering wheel	No functions except light and wiper controls	Controls	Drive selector, door locking mechanism, emergency lights switch, mechanical parking brake
Windows	Front manual lifter	Windows	Rear lateral hatching mechanism
Windows	Front and rear wipers	Mirrors	Manually adjustable wing mirrors

7.1. Appendix A

Table A - 1. Worldwide PC sales, by country, 2013 – 2020

Region	2013	2014	2015	2016	2017	2018	2019	2020
Europe	12,31	13,01	14,20	15,13	15,63	15,62	15,81	11,96
Russia	2,78	2,49	1,60	1,43	1,60	1,80	1,76	1,60
USA	15,53	16,44	17,29	17,47	17,13	17,22	16,97	14,45
Japan	4,56	4,70	4,22	4,15	4,39	4,39	4,30	3,81
Brazil	3,58	3,33	2,48	1,99	2,18	2,48	2,67	1,95
India	2,55	2,57	2,77	2,97	3,23	3,39	2,96	2,44
China	16,30	18,37	20,05	23,69	24,17	23,26	21,05	19,79
Others	20,38	20,09	20,39	21,18	23,68	23,84	22,50	17,00
Total	78,00	81,00	83,00	88,00	92,00	92,00	88,00	73,00

In millions of units sold

* Source: (Bekker, 2021); (IEA, 2020); own calculations

Table A - 2. Worldwide PC sales percentage, by segment, Q1 2019

Segment	SUV	C	B	LCV	D	MPV	Pick-Up	A	E	Van	Sports-car	F
% Sales	34,3	14,7	11,2	8,6	7,4	6,1	6	5,6	2,6	1,8	0,5	0,4

* Source: (Felipe, 2019)

Table A - 3. Worldwide EV sales, by key markets, 2013-2020

Country	2013 (+66%)	2014 (+55%)	2015 (+69%)	2016 (+46%)	2017 (+59%)	2018 (+65%)	2019 (+9%)	2020 (+43%)
BEV Others	N/D	N/D	5	20	40	80	95	150
BEV USA	N/D	N/D	35	57	86	250	230	272
BEV EU	N/D	N/D	35	60	120	307	400	740
BEV China	N/D	N/D	250	350	600	800	950	1067
BEV Global	124,8	192,6	325	487	846	1437	1675	2229
PHEV Global	83,2	128,4	217,2	274,3	416,8	645,7	588,6	1004,4
% Market Share EV	0,4	0,5	0,75	1	1,4	2,3	2,6	4,2
% Market Share BEV	0,16	0,24	0,39	0,55	0,92	1,56	1,90	3,05

In thousands of units sold

* Source: (Gersdorf, et al., 2020); (Shahan, 2021); (Dr. Hamilton, et al., 2020), own calculations

Table A - 4. Worldwide BEV sales, by type and class, 2020

Vehicle Type	Class			Sum Total
	Low	Mid	High	
Compact car	38255	186310	0	224565
Subcompact car	132490	27217	0	159707
Minicar	197586	41387	27216	266189
Mid-size car	11727	448667	14023	474417
Large car	0	5	38748	38753
Small crossover	117594	10017	0	127611
Compact crossover	26342	41137	4019	71498
Mid-size crossover	5638	49572	68544	123754
Large SUV	0	0	77925	77925
Midsize MPV	92	1201	24863	26156
Large MPV	6230	0	1756	7986
Small sports-car	0	709	0	709

Not actual worldwide sales. Data aggregated from the Chinese, European and North-American market. Used to calculate an approximated global share by type and class. Data aggregated from Table X - 1

Table A - 5. Europe PC sales, by type and class, 2020

Segment	Class									
	Total		Low		Mid		High		BEV	
	Units	%	Units	%	Units	%	Units	%	Units	% BEVs
Compact car	2059467	17,46	896425	43,53	666259	32,35	496783	24,12	122097	18,81
Subcompact car	2286936	19,39	1312239	57,38	805809	35,24	168888	7,38	150857	23,24
Minicar	848358	7,19	621145	73,22	199997	23,57	27216	3,21	64631	9,96
Mid-size car	798140	6,77	115064	14,42	336020	42,10	347056	43,48	105050	16,19
Large car	246181	2,09	0	0,00	29140	11,84	217041	88,16	17894	2,76
Small crossover	2092457	17,74	1277479	61,05	712014	34,03	102964	4,92	83643	12,89
Compact crossover	1626744	13,79	575751	35,39	709531	43,62	341462	20,99	14057	2,17
Mid-size crossover	945491	8,01	154736	16,37	411394	43,51	379461	40,13	33700	5,19
Large SUV	314848	2,67	14448	4,59	60618	19,25	239782	76,16	33720	5,20
Mid-size MPV	262900	2,23	82949	31,55	81444	30,98	98507	37,47	23361	3,60
Large MPV	52439	0,44	19573	37,33	32866	62,67	0	0,00	0	0
Upper-class	29164	0,25	0	0,00	0	0,00	29164	100,00	0	0
Small sports-car	40288	0,34	76	0,19	13749	34,13	26463	65,68	0	0
Large sports-car	25318	0,21	0	0,00	0	0,00	25318	100,00	0	0
Exotic car	6473	0,05	0	0,00	0	0,00	6473	100,00	0	0
Passenger van	161808	1,37	29862	18,46	90016	55,63	41930	25,91	0	0
TOTAL	11797012		5099747	43,23	4148857	35,17	2548508	21,60	649010	

Data aggregated from Table X - 2

Table A - 6. USA PC sales, by type, 2020 - 2019

Segment	2020		2019	
	PC Sales	BEV Sales	PC Sales	BEV Sales
Pick-Up	2959006	0	3113943	0
Mid-size crossover	2786814	41950	2989779	2594
Large SUV	2029757	33302	2260504	24969
Compact crossover	1757125	0	1986036	0
Mid-size car	1609155	137750	2050318	158925
Compact car	1171495	31060	1680591	47060
Small crossover	821591	5771	943035	3283
Large car	311728	20854	458653	14230
Large MPV	260181	0	408895	0
Large sports car	189467	0	225057	0
Sub-compact car	101987	0	187396	0
Minicar	66295	0	51484	0
Mid-size MPV	45028	1502	74579	4853
Upper-class	33302	0	40852	0
Small sports car	26079	0	28721	0

Data aggregated from Table X - 3

7.2. Appendix B

Table B - 1. Electric motors characteristics

	DC	IM	PMSM	SRM
Power density	Low	Medium	Very High	Medium
Efficiency	Low	Medium	Very High	Medium
Controllability	Very High	Very High	High	Medium
Reliability	Medium	Very High	High	Very High
Technological maturity	Very High	Very High	High	High
Cost	Low	Very Low	High	Low

Source: (Osmanbasic, 2020)

Table B - 2. BEVs battery weight

Model	Curb weight (kg)	Rest of vehicle (kg)	Battery (kg)	% Battery weight
Chevrolet Bolt LT	1616	1186	430	26,6089109
Mercedes-Benz EQC 4MATIC	2495	1843	652	26,1322645
Porsche Taycan 4S	2125	1571	554	26,0705882
BYD Qin Pro EV 53,1 kWh	1490	1130	360	24,1610738
Audi e-Tron 50 Quattro	2445	1865	580	23,7218814
Chery eQ1	995	769	226	22,7135678
Hyundai Ioniq EV 38,3 kWh	1602	1242,5694	359,430605	22,4363674
NIO ES6	2345	1826,48148	518,518519	22,1116639
NIO ES8	2460	1941,48148	518,518519	21,0779886
BYD Yuan	1580	1247,5	332,5	21,0443038
Tesla Model 3 50 kWh Standard Plus RWD	1825	1443,05556	381,944444	20,9284627
Renault Zoe ZE50-R110	1575	1249	326	20,6984127
Kia Niro EV 39 kWh	1667	1329,37942	337,620579	20,2531841
Volkswagen e-Golf SE	1615	1297	318	19,6904025
Leapmotor T03 Standard	1087	873,549708	213,450292	19,6366414
Nissan Leaf S	1580	1277	303	19,1772152
Volkswagen e-Up!	1235	1005	230	18,6234818
BYD E2	1325	1105	220	16,6037736
Tesla Model X Long range	2554	2142,47737	411,522634	16,1128674

Sources: (Berjoza, et al., 2017), (EVSpecs, 2020)

Table B - 3. BEV models price, type and platform

Brand	Model	Variant	Type	Class	PVP ESP (€)	PVP China (€)	Platform	SUB-PLTF	Platform type
Tesla	Model 3	50 kWh Standard Plus RWD	Mid-size car	Mid	46970	35301,5	Tesla 3/Y		BEV Platform
Wuling	Hongguang Mini EV	9,3 kWh	Minicar	Low	N/A	3744	independent		BEV Independent
Renault	Zoe	ZE50-R110	Subcompact car	Low	32500	N/A	independent		BEV Independent
Volkswagen	ID.3	Pure Performance	Compact car	Mid	36145	N/A	VW MEB		BEV Platform
Hyundai	Kona EV	SE 39 kWh	Small crossover	Low	39650	N/A	HMC B-SUV		ICE Platform
BYD	Qin	Pro EV 53,1 kWh	Mid-size car	Mid	N/A	37557	N/D		ICE Platform
Nissan	Leaf	S	Compact car	Mid	35620	N/A	independent/N/D		BEV Independent
Tesla	Model Y	Long Range Dual Motor	Mid-size crossover	Mid	N/A	N/A	Tesla 3/Y		BEV Platform
Volkswagen	e-Golf	SE	Compact car	Mid	32985		VW MQB	EVO	ICE Platform
Audi	e-Tron	50 Quattro	Large SUV	High	75489	N/A	VW MLB	EVO	ICE Platform
Kia	Niro EV	39 kWh	Small crossover	Low	36025	N/A	HMC ECO-CAR		ICE Platform
Tesla	Model X	Long range	Large SUV	High	100970	N/A	Tesla S/X		BEV Platform
Peugeot	e-208	GT	Subcompact car	Low	32250	N/A	PSA EMP	1	ICE Platform
BYD	Han	EV Base	Mid-size car	Mid	N/A	29874	N/D		ICE Platform
NIO	ES6		Mid-size crossover	High	N/A	46540	N/D		BEV Independent
BMW	i3	120 Ah	Mid-size MPV	High	40700	N/A	independent		BEV Independent
MG	ZS	EV Excite	Compact crossover	Low	N/A	9594	N/D		ICE Platform
Tesla	Model S	Long range plus	Large car	High	90970	N/A	Tesla S/X		BEV Platform
Volkswagen	e-Up!		Minicar	Mid	22802	N/A	VW NSF		ICE Platform
Baojun	E200		Minicar	Low	N/A	7124	Baojun E		BEV Platform
Chevrolet	Bolt	LT	Compact car	Mid	N/A	N/A	GM BEV2		BEV Platform
BYD	E2		Compact car	Low	N/A	11674	BYD E2/E3		ICE Platform
Smart	Fortwo EQ	Coupé	Minicar	High	24450	N/A	N/D		ICE Platform
Mercedes-Benz	EQC	4MATIC	Mid-size crossover	High	78600		Mercedes MEA		BEV Platform
Porsche	Taycan	4S	Large car	High	85710	N/A	VW MSB		ICE Platform
Opel	e-Corsa	Edition	Subcompact car	Mid	31200	N/A	PSA EMP	1	ICE Platform
Baojun	E100		Minicar	Low	N/A	6084	Baojun E		BEV Platform

BYD	Yuan		Small crossover	Low	N/A	10387	BYD S1		BEV Platform
Jaguar	I-Pace	EV320	Mid-size crossover	High	80570	N/A	JLR D7e		
BAIC New Energy	Senova	EU Series 45 kWh	Compact car	Mid	N/A	16874			
Changan	Eado		Compact car	Low	N/A	16887			
GAC	Aion V		Compact crossover	Mid	N/A	20748	GAC GEP2.0		
NIO	ES8		Large SUV	High	N/A	49140			
Hyundai	Ioniq EV	38,3 kWh	Mid-size car	Low	36150	N/A	HMC ECO-CAR		ICE Platform
Chery	eQ1		Minicar	Low	N/A	6474			
Leapmotor	T03	Standard	Minicar	Mid	N/A	8554			
GEELY	Emgrand EV	450	Compact car	Mid	N/A	N/D			ICE Platform
Baojun	E300	Base	Minicar	Mid	N/A	8424			
Mazda	MX-30	SE-L Lux	Compact crossover	Mid	34375	N/A			
Polestar	2		Mid-size car	High	N/A	N/A	GEELY CMA		
Smart	Forfour EQ		Minicar	High	25150	N/A	S-R MINICAR		ICE Platform
Fiat	500e		Minicar	Low	24900	N/A	FCA Mini		ICE Platform
Renault	Twingo ZE		Minicar	Low	22750	N/A	S-R MINICAR		ICE Platform
DS	DS3 crossback e-tense		Small crossover	Mid	39862	N/A	PSA EMP	1	ICE Platform
Volkswagen	ID.4		Mid-size crossover	Mid	35872	N/D	VW MEB		
Volvo	XC40 Recharge EV		Compact crossover	Mid	52286	N/A	GEELY CMA		
Honda	E		Subcompact car	Mid	38600	N/A			
Opel	Ampera - e		Compact car	Mid	37000	N/A	GM BEV2		
Dacia	Spring		Minicar	Low	16990	N/A	R-N-M CMF	A	ICE Platform

Sources: (EVdatabase, 2020), (EVSpecs, 2020), (coches.com) *Wikipedia*

Table B - 4. BEVs technical specifications

Brand	Model	kW	Nm	TR.	0-100 [s]	Vmax [km/h]	Weight [kg]	L	W	H	WB	Seats
Tesla	Model 3	202	404	R	5,6	225	1825	4694	1849	1443	2875	5
Wuling	Hongguang Mini EV	13	85	R	N/D	100	665	2917	1493	1621	1940	4
Renault	Zoe	80	225	F	11,4	135	1575	4087	1787	1562	2588	5
Volkswagen	ID.3	110	310	R	8,9	160	1625	4261	1809	1568	2770	5
Hyundai	Kona EV	100	395	F	9,9	155	1610	4180	1800	1570	2600	5
BYD	Qin	100	180	F	7,9	130	1490	4765	1837	1515	2718	5
Nissan	Leaf	110	320	F	7,9	144	1580	4490	1788	1530	2700	5
Tesla	Model Y	258	527	AWD	5,1	217	2000	4751	1921	1624	2890	7
Volkswagen	e-Golf	100	290	F	9,6	150	1615	4270	1799	1799	2631	5
Audi	e-Tron	230	540	AWD	6,8	190	2445	4901	1935	1616	2929	
Kia	Niro EV	100	395	F	9,8	155	1667	4375	1805	1570	2700	5
Tesla	Model X	500	770	AWD	4,6	250	2554	5037	1999	1684	2965	7
Peugeot	e-208	100	260	F	8,1	150	1530	4055	1745	1430	2540	5
BYD	Han	163	330	F	7,9	N/D	1700	4980	1910	1495	2920	5
NIO	ES6	320	610	AWD	5,6	200	2345	4850	1965	1758	2900	5
BMW	i3	125	250	R	7,3	150	1345	4011	1775	1598	2570	4
MG	ZS	105	353	F	8,5	140	1502	4314	1809	1620	2579	5
Tesla	Model S	500	770	AWD	3,8	250	2069	4970	1964	1445	2960	5
Volkswagen	e-Up!	61	210	F	11,9	130	1235	3600	1645	1492	2417	4
Baojun	E200	29	N/D	F	15,8	100	830	2497	1526	1616	1600	2
Chevrolet	Bolt	150	360	F	6,9	145	1616	4166	1765	1594	2601	5
BYD	E2	70	180	F	10,3	130	1325	4240	1760	1530	2610	5
Smart	Fortwo EQ	60	160	R	11,6	130	1095	2695	1663	1555	1873	2
Mercedes-Benz	EQC	300	760	AWD	5,1	180	2495	4762	1884	1624	2873	5
Porsche	Taycan	300	345	R	5,4	230	2125	4963	1966	1395	2900	4
Opel	e-Corsa	100	260	F	8,1	150	1530	4060	1765	1435	2538	5
Baojun	E100	29	110	F	N/D	100	990	2488	1506	1670	1600	2
BYD	Yuan	120	280	F	8,9	140	1580	4360	1785	1680	2535	5
Jaguar	I-Pace	235	500	AWD	6,4	200	2208	4682	2011	1565	2990	5
BAIC New Energy	Senova	160	300	F	N/D	155	1600	4650	1820	1510	2670	5
Changan	Eado	101	245	F	N/D	140	1680	4620	1820	1540	2660	5
GAC	Aion V	135	350				1725	N/D	N/D	N/D	N/D	5
NIO	ES8	480	840	AWD	4,4	200	2460	5022	1962	1756	3010	7
Hyundai	Ioniq EV	100	295	F	9,7	165	1602	4470	1820	1450	2700	5
Chery	eQ1	30	120	R	18,3	100	995	3200	1670	1550	2150	4
Leapmotor	T03	55	155	F	14	100	1087	3620	2400	1577	2400	4
GEELY	Emgrand EV	163	339	F	9,9	142	1570	4631	1789	1495	2650	5
Baojun	E300	40	150	R	N/D	100	920	2625	1647	1588	1750	2
Mazda	MX-30	105	265	F	9,7	140	2119	4395	1795	1570	2655	5
Polestar	2	300	660	AWD	4,7	205	2198	4607	1800	1479	2735	5
Smart	Forfour EQ	60	160	R	12,7	130	1200	3495	1665	1554	2494	4
Fiat	500e	70	200	F	9,5	135	1350	3632	1683	1527	2322	4
Renault	Twingo ZE	60	160	R	12,6	135	1208	3615	1646	1541	2492	4

DS	DS3 crossback e-tense	100	260	F	8,7	150	1598	4118	1802	1534	2558	5
Volkswagen	ID.4	125	310	R	9	160	1966	4584	1852	1640	2771	5
Volvo	XC40 Recharge EV	300	660	AWD	4,9	180	2188	4425	1873	1652	2702	5
Honda	E	100	315	R	9	145	1588	3894	1752	1512	2538	4
Opel	Ampera - e	150	360	F	7,3	150	1691	4164	1765	1594	2600	5
Dacia	Spring	33	125	F	15	125	950	3737	1622	1516	2423	4

Sources: (EVdatabase, 2020), (EVSpecs, 2020)

Table B - 5. BEVs battery specifications

Brand	Model	kWh (gross)	kWh (net)	WLTP	NEDC	kg	Wh/km (rated)	Wh/kg
Tesla	Model 3	55	50	448	N/D	381,944444	140	144
Wuling	Hongguang Mini EV	9,2	N/D	94,2016807	120	N/D	N/D	N/D
Renault	Zoe	54,7	52	395	N/D	326	174	168
Volkswagen	ID.3	48	45	349	N/D	N/D	151	N/D
Hyundai	Kona EV	42	39,2	305	N/D	N/D	143	N/D
BYD	Qin	53,1	N/D	314,790616	401	360	N/D	161
Nissan	Leaf	40	36	270	350	303	206	132,013201
Tesla	Model Y	75	72,5	505	N/D	N/D	N/D	N/D
Volkswagen	e-Golf	35,8	32	232	300	318	153	112,578616
Audi	e-Tron	71	64,7	341	N/D	580	224	122,413793
Kia	Niro EV	42	39,2	289		337,620579	153	124,4
Tesla	Model X	100	95	455,308123	580	411,522634	217	243
Peugeot	e-208	50	45	339	N/D	N/D	164	N/D
BYD	Han	76,9	N/D	474,933473	605	N/D	N/D	N/D
NIO	ES6	70	N/D	420	N/D	518,518519		135
BMW	i3	42,2	37,9	308	359	N/D	N/D	N/D
MG	ZS	44,5	N/D	263	N/D	N/D	N/D	N/D
Tesla	Model S	100	95	663	713	N/D	180	N/D
Volkswagen	e-Up!	18,7	18,4	141	N/D	230	155	81,3043478
Baojun	E200	24	N/D	164,852941	210	N/D	103	N/D
Chevrolet	Bolt	66	N/D	371,097235	N/D	430		153,488372
BYD	E2	35,2	N/D	239,429272	305	220		160
Smart	Fortwo EQ	17,6	16,7	133	N/D	N/D	161	N/D
Mercedes-Benz	EQC	85	80	411	N/D	652	223	130,368098
Porsche	Taycan	79,2	71	431	N/D	554	248	142,960289
Opel	e-Corsa	50	45	330	N/D	N/D	170	N/D
Baojun	E100	14,9	N/D	154	N/D	N/D		N/D
BYD	Yuan	53,2	N/D	410	N/D	332,5		160
Jaguar	I-Pace	90	84,7	470	N/D	N/D	220	N/D
BAIC New Energy	Senova	45	39,2	290	345	N/D	N/D	N/D
Changan	Eado	45	N/D	235,504202	300			
GAC	Aion V	60	N/D	314,005602	400			
NIO	ES8	70	N/D	355	N/D	518,518519	200	135

Hyundai	Ioniq EV	40,4	38,3	311	N/D	359,430605	138	112,4
Chery	eQ1	30,6	N/D	236,289216	301	226	130	140,2
Leapmotor	T03	36,5	N/D	316,360644	403	213,450292		171
GEELY	Emgrand EV	52	50	327,35084	417	N/D	N/D	N/D
Baojun	E300	32	N/D	239,429272	305	N/D	N/D	N/D
Mazda	MX-30	35,5	30	237	N/D	N/D	178	N/D
Polestar	2	78	75	471	N/D			
Smart	Forfour EQ	17,6	16,7	153	N/D	N/D		N/D
Fiat	500e	23,8	23,8	180	N/D	N/D		N/D
Renault	Twingo ZE	23	21,3	190	N/D	165		133
DS	DS3 crossback e-tense	50	45	320	N/D			
Volkswagen	ID.4	55	52	346	N/D			
	XC40 Recharge				N/D			
Volvo	EV	78	75	418				
Honda	E	35,5	28,5	222	N/D			
Opel	Ampera - e	62,2	58	423	N/D			
Dacia	Spring	26,8	26,8	225	N/D	N/D		N/D

Sources: (EVdatabase, 2020), (EVSpecs, 2020)

Table B - 6. BEVs battery energy density

Model	Wh/kg (Berjoza, D. 2017) [adj. for 2020]		Wh/kg (own analysis)
	kWh		
Renault ZOE ZE22	22	85,9	
Renault ZOE ZE40	41	144,4	
Nissan Leaf 24 kWh	24	120,1	
Nissan Leaf 30 kWh	30	121,1	
Nissan e-NV200	24	119,1	
BMW i3 22 kWh	22	105,7	
BMW i3 33 kWh	33	127,9	
Ford Focus EV 23 kWh	23	86,2	
Ford Focus EV 33,5 kWh	33,5	121,7	
Tesla Model S 60 kWh	60	165,8	
Tesla Model S 85 kWh	85	166,3	
Hyundai Ioniq EV	27,9888	112,9	
Aixam EV	10,005	76,7	
Chevrolet Bolt EV	59,9865	147,9	
Mercedes B-Class Electric	28,0092	147,3	
Mazda Demio EV	20	90,0	
Honda Fit EV	20,0027	73,1	
Peugeot Partner EV	22,5	85,0	
Fiat 500 E	23,9904	98,2	
VW e-Golf 24,2 kWh	21,99	83,3	
VW e-Up!	18,699	91,3	
Tazzari Zero	11,5446	91,3	

Kia Soul EV	32,5003	170,1
Mitsubishi i-MiEV	16,0035	80,5
Think City	24,7676	96,6
Tesla Model X	99,9872	193,8
Renault Kangoo	21,996	94,6
Renault Twizy	6,1	71,0
Tesla Model 3 75 kWh		
Long Range AWD	79,5	260
Renault Zoe ZE50-R110	54,7	168
BYD Qin Pro EV 53,1 kWh	53,1	161
Nissan Leaf S	40	132,013201
Volkswagen e-Golf SE	35,8	112,578616
Audi e-Tron 55 Quattro	95	135
Audi e-Tron 50 Quattro	71	122,413793
Kia Niro EV 39 kWh	42	124,4
Tesla Model X Long range	100	243
NIO ES6 Standard 84kWh	84	170
NIO ES6 Standard 70kWh	70	135
Volkswagen e-Up!	18,7	81,3043478
Chevrolet Bolt LT	66	153,488372
BYD E2	35,2	160
Mercedes-Benz EQC		
4MATIC	85	130,368098
Porsche Taycan 4S	79,2	142,960289
BYD Yuan	53,2	160
NIO ES8	84	135
Hyundai Ioniq EV 38,3 kWh	40,4	112,4
Chery eQ1	30,6	140,2
Leapmotor T03 Standard	36,5	171
Renault Twinge Electric		
Life	22	133
Dacia Spring	26,8	148,5
Kia Soul EV 64 kWh	64	250
Mini Cooper SE	32,6	163
Seat Mii Electric	36,8	148

Sources: (EVdatabse, 2020), (EVSpecs, 2020), (Berjoza, et al., 2017)

Table B - 7. ICEV - BEV weight comparison [percentage]

System	ICEV	Tesla Model S
Powertrain	24	51.82
Body and Chassis	47	20.1
Interior	13	14.26
Closures/fenders	8	4.32
Miscellaneous	8	8.64

Sources: (Lutsley, 2010), (Kenneth, 2016)

Table B - 8. BEV-ICEV price comparison

Model	P.V.P Spain [€]		Price increase	
	ICE	BEV	€	%
Volkswagen Golf	25755	32985	7230	28,072219
Peugeot 208	15550	32250	16700	107,395498
Opel Corsa	17300	31200	13900	80,3468208
Fiat 500	16000	24900	8900	55,625
Hyundai Kona	22390	39650	17260	77,0879857
Volvo XC40	31950	52286	20336	63,6494523
Kia Niro	27650	36025	8375	30,2893309
Hyundai Ioniq	26595	36150	9555	35,927806
Renault Twingo	13400	22750	9350	69,7761194
DS 3	26482	39862	13380	50,5248848

Lowest trim model for each variant. Source: (coches.com)

7.3. Appendix C

Table C - 1. Total Cost Distribution

Category	Cost (€)	% Total	Notes
Indirect Costs	9,447	54.5	Calculated by multiplying the manufacturing cost by (1.815 + 1.21) (Table C - 2 and 21% tax)
Manufacturing	7,898	45.5	Sum of the categories under it
Battery Pack	3,552	20.5	Calculated with Equation from Figure 10
Powertrain	1,540	8.9	See Table C - 9
Frame, body and trim	1,222	7	See Table C - 14
Chassis	983	5.7	See Table C - 13
Assembly	600	3.5	See Table C - 10 and Table C - 11
TOTAL	17,344		

Table C - 2. Applied Indirect Cost Multipliers

Cost Contributor	ICM
Manufacturing	1
Overhead manufacturing	0,195
Warranty	0,075
R&D Engineering	0,05
Depreciation and amortization	0,07
Overhead management	0,17
Corporate overheads	0,1
Retirement and health	0,04
Gross profit	0,03
Sales	0,45
Distribution	0,2
Ads and dealers	0,25
TOTAL	1,815

Table C - 3. R.M. Cuenca Indirect Cost Multipliers

Cost Contributor	ICM
Manufacturing	1
Overhead manufacturing	0,34
Warranty	0,1
R&D Engineering	0,13
Depreciation and amortization	0,11
Overhead management	0,19
Corporate overheads	0,1
Retirement and health	0,04
Gross profit	0,05
Sales	0,47
Distribution	0,4
Ads and dealers	0,07
TOTAL	2

Source: (Vyas, et al., 2000)

Table C - 4. ANL Indirect Cost Multipliers

Cost Contributor	ICM
Manufacturing	1
Overhead manufacturing	0,34
Warranty	0,1
R&D / Engineering	0,13
Depreciation/Amortization	0,11
Overhead management	0,19
Corp. O.H., Retirement and Health	0,14
Profit	0,05
Selling	0,47
TOTAL	2

Source: (Vyas, et al., 2000)

Table C - 5. Boroni Bird Indirect Cost Multipliers

Cost Contributor	ICM
Manufacturing	1
Material cost	0,87
Assembly Labour & Other	0,13
Manufacturing costs	
Overhead manufacturing	0,53
Transportation/Warranty	0,09
Amortization & Depreciation, ENG, R&D, Pension, and Healthcare, Advertising and overhead	0,44
Overhead management	0,06
Profit	0,06
Selling	0,46
Price Discounts	0,1
Dealer Mark-up	0,36
TOTAL	2,05

Source: (Vyas, et al., 2000)

Table C - 6. EEA equivalent Indirect Cost Multipliers

Cost Contributor	ICM
Manufacturing	1
Division Cost	0.72
Division Overhead	0.14
Assembly Labour and Overhead	0.14
Overhead manufacturing	0.48
Manufacturing Overhead	0.22
Engineering, Tooling, and Facilities Expenses	0.26
Overhead management	0.17
Profit	0.17
Selling	0.49
Dealer Margin	0.49
TOTAL	2.14

Source: (Vyas, et al., 2000)

Table C - 7. RPE 2007 Indirect Cost Multipliers

Cost Contributor	ICM
Manufacturing	1
Overhead manufacturing	0.18
Warranty	0.03
R&D	0.05
Depreciation and Amortization	0.07
Maintenance, repair, operations cost	0.03
Overhead management	0.09
General Administrative	0.07
Retirement	0.01
Health	0.01
Selling	0.21
Transportation	0.04
Marketing	0.04
Dealer new vehicle net profit	0.01
Dealer new vehicle selling cost	0.06
Net Income	0.06
TOTAL	1.48

Source: (Rogozhin, et al., 2009)

Table C - 8. McKinsley RPE Indirect Cost Multipliers

Cost Contributor	ICM
Manufacturing	1
Overhead manufacturing	0,37
Warranty	0,04
R&D	0,11
Depreciation and Amortization	0,08
Maintenance, repair, operations cost	0,14
Overhead management	0,04
Profit	0,05
Selling	0,23
Distribution, Mkt, Dealer Support & Discount	0,23
TOTAL	1,64

Source: (Rogozhin, et al., 2009)

Table C - 9. Powertrain manufacturing costs

System	€/kW	€
PMSM ¹	10	500
Inverter	3	150
DC-DC step-down converter		190
On-board charger		500
Control modules		200
TOTAL		1,670

¹ Includes transmission

Source: (Fries, et al., 2017)

Table C - 10. Assembly labour costs

Country	€/hr
Germany	46
Japan	38
USA	33
Spain	23
Eastern Europe	11
China	3
Applied labour rate	30

Source: (Fries, et al., 2017)

Table C - 11. Assembly time

Vehicle type	Hr/vehicle
Sub-compact car (conventional ICEV)	25
Mid-range car (conventional ICEV)	40
Large car (conventional ICEV)	50
Applied assembly time	20

Source: (Fries, et al., 2017)

Table C - 12. Manufacturing cost percentages applied to Kia Picanto

Component system	Share of Manufacturing costs (%)	Subsystem	Share of Manufacturing costs (%)
Body	26,46	Body-in-white	13,22
		Paint and coatings	0,13
		Glass	2,32
		Body trim and comp.	10,3
		Electrical components	0,5
Engine	21,53	Engine unit	18,5
		Engine accessories	2,33
		Engine electrical	0,7
Transmission	5,03	Transmission unit	4,95
		Controls	0,08
Chassis	25,58	Frame	1,19
		Suspension	4,91
		Steering	0,97
		Brakes	2,97
		Exhaust system	3,01
		Fuel system	0,36
		Final drive	1,48
		wheels and tires	5,19
		bumpers, fenders and shields	2,29
		Chassis electrical	0,83
		Accessories and tools	0,12
		Fluids	2,62
Vehicle assembly	21,04	Vehicle assembly	21,04

With these values, the manufacturing costs for each system of the Kia Picanto are calculated. The total manufacturing costs for the Picanto are calculated with the same ICM (1.815 + 1.21). With these values, the next calculations are carried out. Source: (Cuenca, et al., 1999)

Table C - 13. Chassis manufacturing costs derived from Kia Picanto approximation

Sub-system	PICANTO	% DECREASE	OWN
Sub-Frame	65,33	50	32,66
Suspension	269,54	5	256,06
Steering	53,25	-50	79,87
Brakes	163,04	20	130,43
Exhaust system	165,23	Deleted	
Fuel system	19,76	Deleted	
Final drive	81,25	20	65,00
wheels and tires	284,91	15	242,17
bumpers, fenders and shields	125,71	15	106,85
Accessories and tools	6,59	0	6,59
Fluids	143,83	60	57,53
TOTAL	1378,42		983,45

Table C-13 Details:

The Picanto cost approximation for the sub-systems shown is sourced from the data in Table C - 12.

Sub-Frame: The cost is assumed to be decreased by 50% as the front sub-frame no longer needs to support an ICE, and therefore can be simplified, since it will only need to cover the functions of component support and crumple zone.

Suspension: A 5% cost decrease is applied given the theoretical compact size of our suspension system.

Steering: In this case, the cost is increased by 50%. This is because in the Picanto the power-steering is hydraulic, whereas in our case it is an electric system, which is more expensive.

Brakes: Brake cost is reduced by 20%, as the rear drum brakes are considerably smaller, and the front brakes by a small margin.

Final drive: This refers to the driveshafts and joints to the wheel hub. As our design is rear-engine, the joints are simplified substantially, which is the reason for the 20% cost decrease.

Wheels and tyres: Since the overall size of the wheels and tyres is smaller, a 15% decrease is applied.

Bumpers, fenders and shields: As the number of components is reduced, and identical components are used in the bumpers and fenders, a 15% cost decrease is applied.

Fluids: The need for engine for the engine fluids is deleted, leaving only the need for brake fluid and a much smaller quantity of transmission lubricant.

Table C - 14. Frame and Bodywork manufacturing costs derived from Kia Picanto approximation

System	KIA PICANTO							OWN DESIGN							
	€	%	Subsystem	Units	€/u	%	€	€	% ↓	%	% ↓	€/u	%	Units	€
TOTAL	1498	100						1203	19,71						
Body-in-white	726	48,5	Frame floor			30	217,71	636	12,39		3	211,18			
			A-C pillars panel			12	87,08				5	82,73			
			B-pilar panel			7	50,80				2	49,78			
			Front doors			20	145,14				4	139,30			
			Rear doors			15	108,85				4	104,50			
			Bonnet			7	50,80				5	48,26			
			Rear hatch			9	65,31				<i>Del.</i>				
Paint and coatings	7	0,5						6,78	5						
Glass	127	8,5						63,68	50						
Body trim and electrical	638	42,5	Front seat	2	35	5,49450549	70	497,10	21,96		15	29,75		2	59,5
			Rear seat	1	35	5,49450549	35				0	35		1	35
			Dashboard	1	80	12,5588697	80				20	64		1	64
			Central console	1	12	1,88383046	12				40	7,2		1	7,2
			Door trim	4	10	1,56985871	40				0	10		4	40
			Steering wheel	1	12	1,88383046	12				5	11,4		1	11,4
			rear manual window lifter	2	2	0,31397174	4				<i>Change</i>	1,5		2	3
			Infotainment screen	1	35	5,49450549	35				<i>Del.</i>				
			AC controller	1	25	3,92464678	25				<i>Del.</i>				
			Knee airbags	2	12	1,88383046	24				<i>Del.</i>				
			Twin Curtain Airbags	2	15	2,35478807	30				0	15		2	30
			Dual front airbags	2	20	3,13971743	40				0	20		2	40
			Driver tachometer	1	25	3,92464678	25				0	25		1	25
			Upholstery	1	16	2,51177394	16				0	16		1	16
			Front electric window elevator	2	5	0,78492936	10				<i>Change</i>	2		2	4
			Manually adj. Wingmirrors	2	10	1,56985871	20				0	10		2	20
			Front light	2	15	2,35478807	30				10	13,5		2	27
			Rear light	2	15	2,35478807	30				0	15		2	30
			Rear foglight	2	2	0,31397174	4				<i>Del.</i>				
			front daytime light	2	2	0,31397174	4				<i>Del.</i>				
			Rear brake light	1	5	0,78492936	5				0	5		1	5
			Wipers	3	4	0,62794349	12				0	4		3	12
			Wiring harness	1	60	9,41915228	60				0	60		1	60
			Speakers	2	2	0,31397174	4				0	2		2	4
			Interior lights	3	2	0,31397174	6				0	2		3	6
			turning signal	2	2	0,31397174	4				0	2		2	4
			Exterior Trim	1	10	1,56985871	10				0	10		1	10

Table C-14 Details:

The *System* costs for the Picanto are calculated using data from Table C - 12.

The assumptions used to carry out this cost approximation are shown in blue text.

For the *Body-in-White* calculation, the system is divided into sub-systems, and the cost percentage within the system is approximated according to the knowledge obtained in a professional environment and by examination of the complexity and material usage of the different sub-systems from existing models. For the calculation of this proposal's cost, an initial price reduction of 2% is applied throughout the subsystems, thanks to the decrease in overall size. On top of this, if a component benefits from having a simple geometry, or from being used extensively in other platform models, a further decrease is applied. In the case of the rear hatch, it is suppressed, as it is substituted by a rear abatable window.

For the Paint, a small 5% decrease is applied, as the number of bodywork components that need to be painted are lowered.

A 50% reduction is applied to the windows, as they are all flat and only require the cutting operation, deleting the need for the conforming operations, all in different dyes in the Picanto.

For the Body trim & Electrical system, a list of the Picanto's main components is carried out, and a price approximation for each component is done, as to account for the total system cost, derived from Table C - 12. After this, a cost reduction is carried out if the component is simplified, or deleted if that is the case.

7.4. Appendix D

Segment B Customer Portrait

Typical persona



SARAH

31, Husband, No children

Household income:

£25k–50k (\$32k–\$64k)

Currently owns:

Small petrol car

“ My husband and I bought our latest car from our local dealer, on a great finance plan they organised, which has really brought down our monthly spend. It’s a small petrol car, similar to our previous one, just a different brand.

Primarily, we use the car to get to and from work, which isn’t far, so most of the time it’s either sitting on our driveway or in the work car park, but that’s all we really need it for. At the weekend, we use it for short personal trips to the shops, but rarely do we use it for long distances.

We’re not looking for luxury – just something that we can trust to get us from A to B. I’m not sure our current brand offers an electric car to suit our needs at the moment, so we would probably look to another established manufacturer when we switch. I think EVs are much better for the environment, but just not sure if they are practical for our day-to-day use at the moment. ”

Segment D Customer Portrait

Typical persona



OLIVER

25, Single, No children

Household income:

£50k or less (\$64k or less)

Currently owns:

Used, micro car

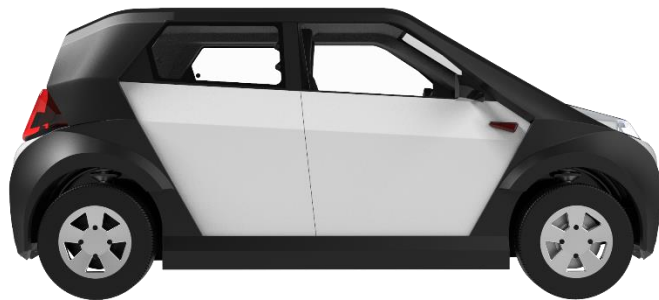
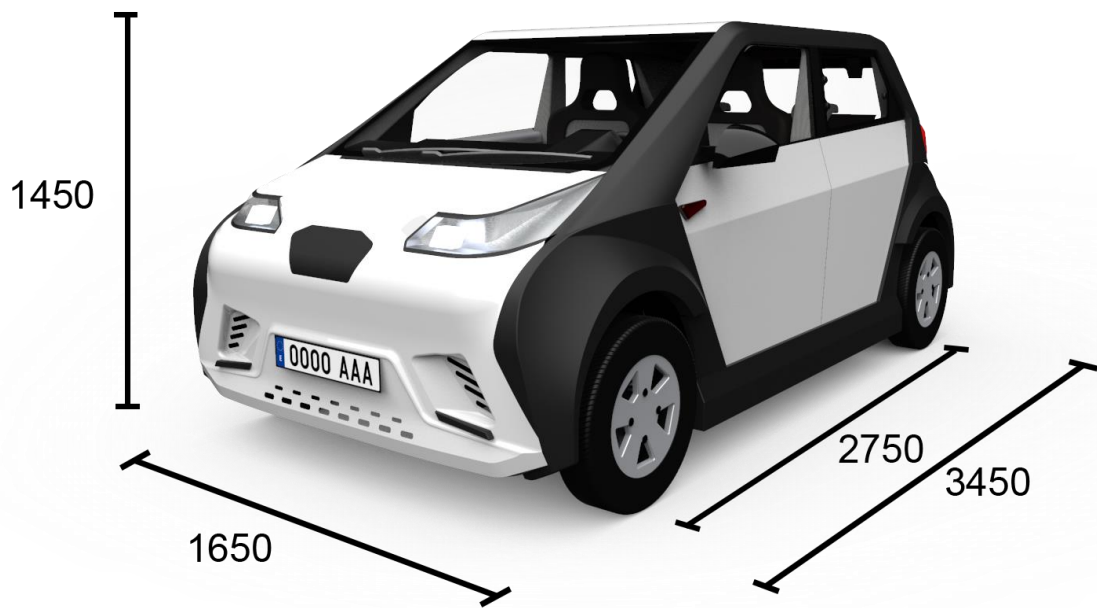
“ I’m excited to have finished university and started working in my first job. I really care about the environment and sustainability but, without a big budget, EVs seem way beyond my reach.

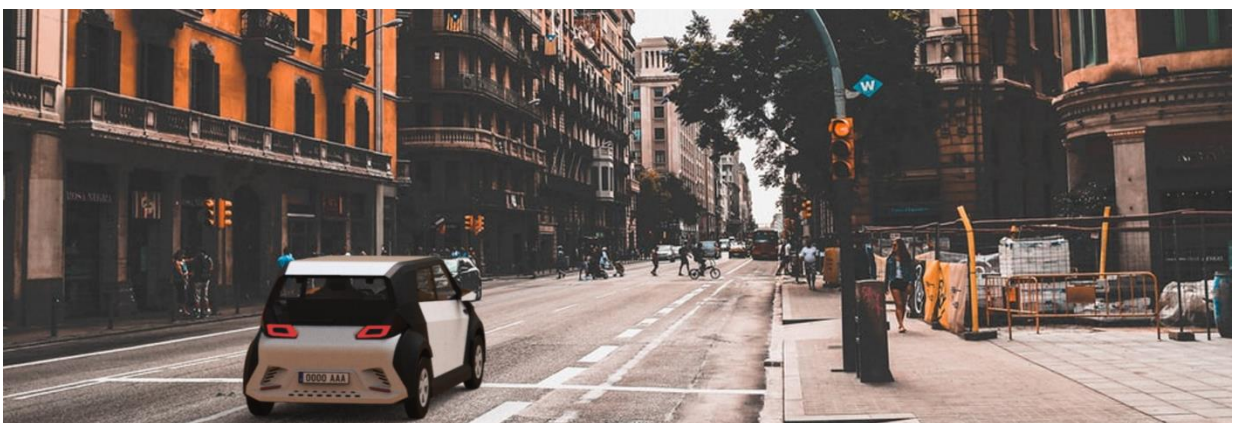
I’d love to own an EV sports car one day – I’ve seen cars in retail stores when I’m out shopping and they’re really cool. I can’t wait to see more start-ups bringing out EVs! Unlike my parents, I wouldn’t really worry about the range. The technology is improving all the time, and I read a lot about EVs so I know what they’re all about.

I drive under 400 miles a month, so for now I’ve settled on something used, small and economical. I’m not really too fussed about brand and luxury; my goal was just something nippy that I could afford to buy with cash. ”

Source: (Dr. Hamilton, et al., 2020)

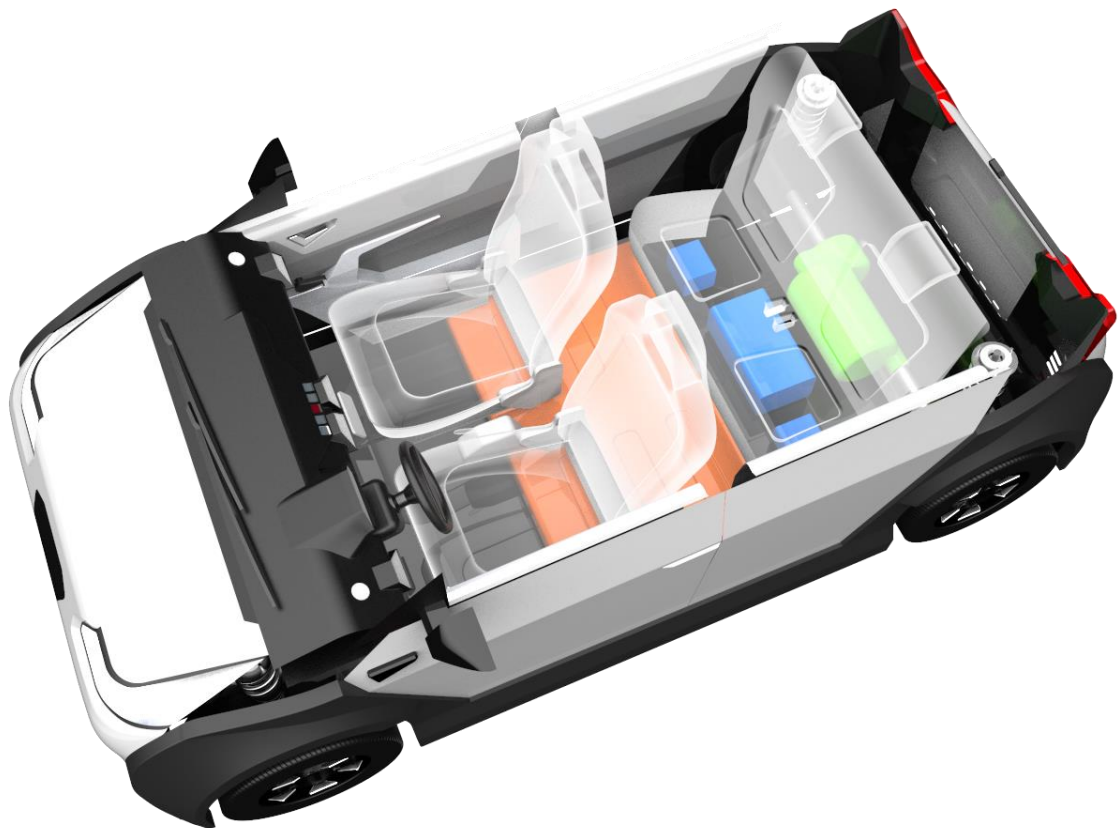
7.5. Appendix E













Color scheme example

7.6. Appendix X

Table X - 1. EU, USA and China BEV model sales, 2020 – 2019

Brand	Model	Global		Europe		USA		China		Type	Class
		2020	2019	2020	2019	2020	2019	2020	2019		
Tesla	Model 3	359178	254093	85979	95168	137750	158925	135449	0	Mid-size car	Mid
Wuling	Hongguang Mini EV	126603	0	0	0	0	0	126603	0	Minicar	Low
Renault	Zoe	99432	45129	99432	45129	0	0	0	0	Subcompact car	Low
Volkswagen	ID.3	54495	0	54495	0	0	0	0	0	Compact car	Mid
Hyundai	Kona EV	50760	24266	47796	22545	2964	1721	0	0	Small crossover	Low
BYD	Qin	46038	5503	0	0	0	0	46038	5503	Mid-size car	Mid
Nissan	Leaf	40736	44157	31177	31792	9559	12365	0	0	Compact car	Mid
Tesla	Model Y	40001	0	0	0	40001	0	0	0	Mid-size crossover	Mid
Volkswagen	e-Golf	39480	47463	33650	28517	747	18277	5083	669	Compact car	Mid
Audi	e-Tron	34915	23751	27713	18382	7202	5369	0	0	Large SUV	High
Kia	Niro EV	33826	11633	31019	10071	2807	1562	0	0	Small crossover	Low
Tesla	Model X	32107	27461	6007	7861	26100	19600	0	0	Large SUV	High
Peugeot	e-208	31287	30730	31287	30730	0	0	0	0	Subcompact car	Low
BYD	Han	28773	0	0	0	0	0	28773	0	Mid-size car	Mid
NIO	ES6	27611	12074	0	0	0	0	27611	12074	Mid-size crossover	High
BMW	i3	24863	36457	23361	31604	1502	4853	0	0	Mid-size MPV	High
MG	ZS	23983	17021	0	0	0	0	23983	17021	Compact crossover	Low
Tesla	Model S	22012	22735	5562	8635	16450	14100	0	0	Large car	High
Volkswagen	e-Up!	21942	0	21942	0	0	0	0	0	Minicar	Mid
Baojun	E200	21004	48278	0	0	0	0	21004	48278	Minicar	Low
Chevrolet	Bolt	20754	16418	0	0	20754	16418	0	0	Compact car	Mid
BYD	E2	19616	7319	0	0	0	0	19616	7319	Compact car	Low
Smart	Fortwo EQ	19576	11815	19576	11815	0	0	0	0	Minicar	High
Mercedes-Benz	EQC	18508	1432	14645	1432	0	0	3863	0	Mid-size crossover	High
Porsche	Taycan	16736	876	12332	746	4404	130	0	0	Large car	High
Opel	e-Corsa	16110	0	16110	0	0	0	0	0	Subcompact car	Mid
Baojun	E100	15793	11772	0	0	0	0	15793	11772	Minicar	Low
BYD	Yuan	15537	61900	0	0	0	0	15537	61900	Small crossover	Low
Jaguar	I-Pace	15390	14826	13444	12232	1946	2594	0	0	Mid-size crossover	High
BAIC New Energy	Senova	14742	110147	0	0	0	0	14742	110147	Compact car	Mid
Changan	Eado	13295	23148	0	0	0	0	13295	23148	Compact car	Low
GAC	Aion V	11173	0	0	0	0	0	11173	0	Compact crossover	Mid
NIO	ES8	10903	8872	0	0	0	0	10903	8872	Large SUV	High
Hyundai	Ioniq EV	10325	10049	10325	8533	0	1516	0	0	Mid-size car	Low
Chery	eQ1	9871	0	0	0	0	0	9871	0	Minicar	Low
Leapmotor	T03	9831	0	0	0	0	0	9831	0	Minicar	Mid
GEELY	Emgrand EV	9572	29949	0	0	0	0	9572	29949	Compact car	Mid
Baojun	E300	9557	0	0	0	0	0	9557	0	Minicar	Mid
Mazda	MX-30	9477	0	9477	0	0	0	0	0	Compact crossover	Mid
Polestar	2	8746	0	8746	0	0	0	0	0	Mid-size car	High
Neta	U	8281	0	0	0	0	0	8281	0	Compact crossover	Mid
Neta	N01	8158	10006	0	0	0	0	8158	10006	Small crossover	Low
Smart	Forfour EQ	7640	0	7640	0	0	0	0	0	Minicar	High
ORA	White Cat	6651	0	0	0	0	0	6651	0	Minicar	Low
Venucia	D60	6608	4657	0	0	0	0	6608	4657	Mid-size car	Mid

Fiat	500e	6336	0	6336	0	0	0	0	0	Minicar	Low
NIO	EC6	5367	0	0	0	0	0	5367	0	Mid-size crossover	High
Geometry	C	5277	0	0	0	0	0	5277	0	Mid-size car	High
BAIC New Energy	EC Series	5207	27354	0	0	0	0	5207	27354	Subcompact car	Mid
Renault	Twingo ZE DS3	5106	0	5106	0	0	0	0	0	Minicar	Low
DS	Crossback e-tense	4828	0	4828	0	0	0	0	0	Small crossover	Mid
Volkswagen	ID.4	4810	0	4810	0	0	0	0	0	Mid-size crossover	Mid
Volvo	XC40 Recharge EV	4580	598	4580	598	0	0	0	0	Compact crossover	Mid
Nissan	Sylphy	4045	8109	0	0	0	0	4045	8109	Mid-size car	Mid
Honda	E	4028	0	4028	0	0	0	0	0	Subcompact car	Mid
Hongqi	E-HS3	4019	8339	0	0	0	0	4019	8339	Compact crossover	High
BYD	Song	3990	0	0	0	0	0	3990	0	Mid-size crossover	Low
Audi	Q2 e-tron	3819	3744	0	0	0	0	3819	3744	Mid-size crossover	High
Wuling	Rongguang	3124	0	0	0	0	0	3124	0	Large MPV	Low
Neta	V	3033	0	0	0	0	0	3033	0	Small crossover	Low
Aiways	U5	3030	0	430	0	0	0	2600	0	Mid-size crossover	Mid
JMC	EV3	2855	5338	0	0	0	0	2855	5338	Small crossover	Low
Roewe	R ER6	2820	0	0	0	0	0	2820	0	Mid-size car	Mid
BYD	E3	2820	1649	0	0	0	0	2820	1649	Compact car	Low
Opel	Ampera	2775	2510	2775	2510	0	0	0	0	Compact car	Mid
FAW	Besturn B30	2538	11843	0	0	0	0	2538	11843	Compact car	Mid
GEELY	Emgrand GSe	2530	10806	0	0	0	0	2530	10806	Compact crossover	Mid
Dongfeng	LingZhi	2525	768	0	0	0	0	2525	768	Large MPV	Low
Chery	Arrizo 5e	2401	3597	0	0	0	0	2401	3597	Compact car	Low
Everus	EV-1	2380	1555	0	0	0	0	2380	1555	Small crossover	Mid
Maple	30X EV	2322	0	0	0	0	0	2322	0	Compact crossover	Low
Dongfeng	E1	1878	0	0	0	0	0	1878	0	Small crossover	Low
Citroën	C-Zero	1839	980	1839	980	0	0	0	0	Minicar	Low
JAC	iEV6	1830	18379	0	0	0	0	1830	18379	Subcompact car	Mid
BYD	E1	1771	7470	0	0	0	0	1771	7470	Subcompact car	Low
SAIC	Maxus EUNIQ 5	1756	213	0	0	0	0	1756	213	Large MPV	High
Dacia	Spring	1724	0	1724	0	0	0	0	0	Minicar	Low
Dongfeng	S50	1402	5234	0	0	0	0	1402	5234	Mid-size car	Low
Chery	Ant EV	1304	0	0	0	0	0	1304	0	Compact crossover	Mid
Chery	eQ	1221	39401	0	0	0	0	1221	39401	Minicar	Low
BYD	D1	1201	0	0	0	0	0	1201	0	Mid-size MPV	Mid
JAC	iEVA50	1201	2859	0	0	0	0	1201	2859	Mid-size car	Mid
FAW	Besturn E01	1085	0	0	0	0	0	1085	0	Compact crossover	Mid
JAC	iC5	1053	0	0	0	0	0	1053	0	Compact car	Mid
Levdeo	i9	1035	0	0	0	0	0	1035	0	Mid-size crossover	Mid
BAIC New Energy	EX Series	876	12500	0	0	0	0	876	12500	Small crossover	Mid
Buick	Velite 7	875	0	0	0	0	0	875	0	Small crossover	Mid
BMW	X3 ix3	857	0	0	0	0	0	857	0	Mid-size crossover	High
Lingbao	Box	851	0	0	0	0	0	851	0	Minicar	Low

ORA	iQ5	820	10367	0	0	0	0	820	10367	Compact crossover	Mid
Seres	SF5	791	0	0	0	0	0	791	0	Mid-size crossover	High
JAC	iEVS4	776	4675	0	0	0	0	776	4675	Compact crossover	Mid
Leapmotor	S01	709	0	0	0	0	0	709	0	Small sports-car	Mid
Oushang	A600	581	0	0	0	0	0	581	0	Large MPV	Low
Soueast	DX3	577	1534	0	0	0	0	577	1534	Compact crossover	Mid
BYD	Tang	563	0	0	0	0	0	563	0	Mid-size crossover	Low
Honda	M-NV	540	0	0	0	0	0	540	0	Small crossover	Mid
Hycan	OO7	508	0	0	0	0	0	508	0	Mid-size crossover	Mid
Chery	Tiggo E	447	1953	0	0	0	0	447	1953	Small crossover	Low
JMC	EX5	417	1045	0	0	0	0	417	1045	Small crossover	Low
FAW	Besturn X40	395	252	0	0	0	0	395	252	Compact crossover	Mid
Changan	CS15	361	2677	0	0	0	0	361	2677	Small crossover	Low
Karry	K60	335	68	0	0	0	0	335	68	Mid-size crossover	Low
Peugeot	iOn	333	865	333	865	0	0	0	0	Minicar	Low
Dongfeng	E3	322	0	0	0	0	0	322	0	Small crossover	Low
JAC	iEV7S	322	4056	0	0	0	0	322	4056	Small crossover	Mid
Denza	X	294	0	0	0	0	0	294	0	Mid-size crossover	Low
Oushang	X7	270	0	0	0	0	0	270	0	Mid-size crossover	Low
JAC	iEV4	256	0	0	0	0	0	256	0	Compact car	Mid
GAC	Eupheme EV	195	804	0	0	0	0	195	804	Small crossover	Mid
Ford	Mustang Mach-E	188	0	185	0	3	0	0	0	Mid-size crossover	Mid
Skoda	Enyaq	186	0	186	0	0	0	0	0	Mid-size crossover	Low
Sitech	DEV1	176	2914	0	0	0	0	176	2914	Minicar	Low
Venucia	T60	139	102	0	0	0	0	139	102	Compact crossover	Mid
BYD	E5	103	29311	0	0	0	0	103	29311	Compact car	Low
Dongfeng	Succe	92	0	0	0	0	0	92	0	Mid-size MPV	Low
Citroën	E-Mehari	78	154	78	154	0	0	0	0	Minicar	Low
Mitsubishi	i-MiEV	57	171	57	171	0	0	0	0	Minicar	Mid
JAC	iEV7	42	3950	0	0	0	0	42	3950	Subcompact car	Mid
Peugeot	2008	37	0	0	0	0	0	37	0	Compact crossover	Low
Dongfeng	Xuan	20	0	0	0	0	0	20	0	Compact car	Low
SAIC	Maxus EUNIQ 6	20	0	0	0	0	0	20	0	Mid-size crossover	High
Lifan	820 EV	5	1685	0	0	0	0	5	1685	Large car	Mid
Lifan	650 EV	4	1234	0	0	0	0	4	1234	Mid-size car	Mid
Kia	KX3	1	194	0	0	0	0	1	194	Small crossover	Mid
Changfeng	Leopard CS9	0	659	0	0	0	0	0	659	Small crossover	Low
JMC	E200	0	8486	0	0	0	0	0	8486	Minicar	Low

Table X - 2. EU PC sales by model and class, 2020-2019

Vehicle			Sales				Segment		Selling Price	Platform	Sub-Platform
Group	Brand	Model	2020	2019	2020	2019	Type	Class			
VW	Volkswagen	Golf	285013	410779	401985	553967	COMPACT CAR	Mid	25755	VW MQB	EVO
R-N-M	Renault	Clio	248602	317645	248602	317645	SUBCOMPACT CAR	Low	14910	R-N-M CMF	B
Stellantis	Peugeot	208	199316	224848	199316	224848	SUBCOMPACT CAR	Low	15550	PSA EMP	1
Stellantis	Opel	Corsa	198887	221630	198887	221630	SUBCOMPACT CAR	Mid	17300	PSA EMP	1
VW	Skoda	Octavia	180902	218439	207598	285245	COMPACT CAR	Low	24190	VW MQB	EVO
Toyota	Toyota	Yaris/L/L-sedan	179867	211216	300025	348256	SUBCOMPACT CAR	Mid	19400	TNGA-B	
R-N-M	Renault	Captur	178724	222540	179205	223241	SMALL X-OVER	Low	20490	R-N-M CMF	B
Ford	Ford	Focus	173853	224401	208359	287619	COMPACT CAR	Low	20760	FORD C2	
VW	Volkswagen	Polo	169467	257804	214538	331263	SUBCOMPACT CAR	Mid	17665	VW MQB	A0
R-N-M	Dacia Mercedes-Benz	Sandero	167032	223186	167032	223186	SUBCOMPACT CAR	Low	10884	R-N-M CMF	B LS
Daimler		A-Class	158955	198926	242350	285382	COMPACT CAR	High	30710	N/D	
VW	Volkswagen	T-Roc	158638	207976	268243	334835	SMALL X-OVER	Mid	24311	VW MQB	A1
Stellantis	Peugeot	2008	156138	164951	157382	165789	SMALL X-OVER	Low	22448	PSA EMP	1
Ford	Ford	Fiesta	156067	228959	159421	289107	SUBCOMPACT CAR	Mid	17211	FORD B2E	
VW	Volkswagen	Tiguan	149845	225048	420738	552795	COMPACT X-OVER	Mid	30704	VW MQB	A2
Stellantis	Citroën	C3	149284	210465	149284	210465	SUBCOMPACT CAR	Low	15731	PSA PF	1
Stellantis	Fiat	Panda	145907	184027	145907	184027	MINICAR	Low	13850	FCA Mini	
Stellantis	Fiat	500	141313	175017	141987	178284	MINICAR	Low	16000	FCA Mini	
R-N-M	Dacia	Duster	139269	220167	139269	220167	SMALL X-OVER	Low	14574	R-N	B0
Toyota	Toyota	Corolla	137209	133597	717805	793593	COMPACT CAR	Mid	26550	TNGA-C	
R-N-M	Nissan	Qashqai	135829	218946	297022	398719	COMPACT X-OVER	Mid	23700	R-N-M CMF	C/D
HMC	Hyundai	Kona	126980	105030	204304	182552	SMALL X-OVER	Low	22390	HMC B-SUV	
Stellantis	Peugeot	3008	125440	194763	125440	197397	COMPACT X-OVER	Low	30242	PSA EMP	2
BMW	BMW	3-series/L	118369	124537	315975	281525	MIDSIZE CAR	High	44950	BMW CLAR	
Ford	Ford	Puma	118180	337	118180	337	SMALL X-OVER	Mid	26335	FORD B2E	
VW	Volkswagen	Passat	115363	124650	267342	346830	MIDSIZE CAR	Mid	32635	VW MQB	1st GEN
VW	Volkswagen	T-Cross	113320	101229	176815	145752	SMALL X-OVER	Mid	21006	VW MQB	A0
VW	Seat	Leon	111045	136622	111045	136622	COMPACT CAR	Low	22260	VW MQB	EVO
BMW	Mini	Mini	110664	134594	126754	153152	SUBCOMPACT CAR	High	21450	BMW UKL1	

GEELY	Volvo	XC40	110254	82457	134032	100104	COMPACT X-OVER	Mid	31950	GEELY CMA	
BMW	BMW	1-series	107870	112068	137205	155773	COMPACT CAR	High	30400	BMW UKL2	
Toyota	Toyota	C-HR/IZOA	101252	119786	242792	281166	COMPACT X-OVER	Mid	28202	TNGA-C	
R-N-M	Renault	Zoe	99432	45129	99432	45129	SUBCOMPACT CAR	Low	32500	independent	
Daimler	Mercedes-Benz	GLC	99160	109095	312386	324391	MIDSIZE X-OVER	High	51400	M-B MRA1	
VW	Skoda	Fabia	97906	154534	97906	156046	SUBCOMPACT CAR	Low	18156	VW MQB	PQ26
VW	Audi	A3/S3/RS3	97492	124422	184341	219440	COMPACT CAR	High	28874	VW MQB	EVO
Stellantis	Opel	Crossland	91411	114721	91411	114721	SMALL X-OVER	Mid	21461	PSA PF	1
Toyota	Toyota	RAV4	90761	91800	696088	665845	MIDSIZE X-OVER	Mid	36650	TNGA-K	
HMC	Hyundai	Tucson	90594	136608	245608	306955	COMPACT X-OVER	Low	28400	HMC J6	
Stellantis	Peugeot	308	90324	141060	90694	152609	COMPACT CAR	Low	24526	PSA EMP	2
VW	Audi	Q3	89789	91467	144292	121111	COMPACT X-OVER	High	37482	VW MQB	A2
BMW	BMW	X1	88486	108507	197950	223686	COMPACT X-OVER	High	34300	BMW UKL2	
Tesla	Tesla	Model 3	85979	95168	359178	254093	MIDSIZE CAR	Mid	49980		
Toyota	Toyota	Aygo	82711	99510	82711	99510	MINICAR	Mid	14250	PSA-Toyota Minicar	
VW	Skoda	Karoq	82121	105041	105416	143067	COMPACT X-OVER	Low	25660	VW MQB	A1
Daimler	Mercedes-Benz	C-Class	81909	143293	260503	347058	MIDSIZE CAR	High	42450	M-B MRA1	
VW	Seat	Arona	80765	110648	80765	110648	SMALL X-OVER	Low	19680	VW MQB	A0
Ford	Ford	Kuga	80177	161635	91082	170533	MIDSIZE X-OVER	Mid	27322	FORD C2	
HMC	Kia	Niro	77830	57337	95264	81758	SMALL X-OVER	Low	27650	HMC ECO-CAR	
VW	Audi	A4/S4/RS4/A4L	77515	102994	226762	297118	MIDSIZE CAR	High	41071	VW MLB	EVO
VW	Skoda	Kamiq	75559	12215	115598	64875	SMALL X-OVER	Low	21780	VW MQB	A0
Stellantis	Citroën	C3	75281	112089	75281	112089	SMALL X-OVER	Low	20714	PSA PF	1
R-N-M	Renault	Megane	74536	129222	74536	129222	COMPACT CAR	Low	23515	R-N-M CMF	C/D
R-N-M	Renault	Twingo	73345	87383	73345	87383	MINICAR	Low	13400	S-R MINICAR	
HMC	Kia	Ceed	72017	100676	72017	100676	COMPACT CAR	Low	20525	HMC K2	
Stellantis	Opel	Grandland	71680	91575	71680	91575	COMPACT X-OVER	Mid	27358	PSA EMP	2
Stellantis	Opel	Astra	70550	136638	70550	136638	COMPACT CAR	Mid	24300	GM D2XX	
GEELY	Volvo	XC60	70533	81876	102611	112454	MIDSIZE X-OVER	Mid	49350	VOLVO SPA	
VW	Seat	Ateca	70408	90291	70408	90291	COMPACT X-OVER	Low	24360	VW MQB	A1
Daimler	Mercedes-Benz	E-Class/L	70171	107453	245570	304129	LARGE CAR	High	60825	M-B MRA1	
Stellantis	Citroën	C5	69750	79532	79529	95620	COMPACT X-OVER	Low	27275	PSA EMP	2

VW	Skoda	Kodiaq	69516	88516	87209	128583	MIDSIZE X-OVER	Low	31680	VW MQB	A2
HMC	Kia	Sportage	69016	110514	222109	285199	COMPACT X-OVER	Low	25950	HMC J6	
Daimler	Mercedes-Benz	CLA	67319	61958	78316	74358	COMPACT CAR	High	32025	N/D	
R-N-M	Renault	Kadjar	63685	110013	63866	115997	COMPACT X-OVER	Low	25150	R-N-M CMF	C/D
HMC	Hyundai	i20	63301	84218	63301	84218	SUBCOMPACT CAR	Low	16900	HMC K2	
VW	Seat	Ibiza	62832	99647	62832	99647	SUBCOMPACT CAR	Low	16360	VW MQB	A0
BMW	BMW	X3	61740	81465	257211	273075	MIDSIZE X-OVER	High	47500	BMW CLAR	
VW	Skoda	Superb	59925	67488	68253	91225	MIDSIZE CAR	Low	31600	VW MQB	1st GEN
BMW	BMW	5-series/L	59814	89326	272534	319138	LARGE CAR	High	56750	BMW CLAR	
VW	Volkswagen	Up!	59578	80048	59578	80048	MINICAR	Mid	22802	VW NSF	
Stellantis	Jeep	Renegade	58975	78842	124299	161368	SMALL X-OVER	Mid	22000	GM -Fiat	Wide 4x4
Stellantis	Fiat	500	58853	89361	60297	91880	SMALL X-OVER	Low	20500	Small	Wide 4x4
R-N-M	Nissan	Juke	58402	47519	58402	47519	SMALL X-OVER	Mid	20880	R-N-M CMF	B
VW	Audi	A1	58224	77868	58224	77868	SUBCOMPACT CAR	High	22253	VW MQB	A0
GEELY	Volvo	S60/V60	58003	65917	74831	86107	MIDSIZE CAR	Mid	41550	VOLVO SPA	
VW	Audi	Q2	57825	78335	57825	78335	SMALL X-OVER	High	28811	VW MQB	1st GEN
Daimler	Mercedes-Benz	GLA	55911	70608	81348	131395	COMPACT X-OVER	High	37800	N/D	
VW	Audi	A6/S6/RS6/Allroad/A6L	55737	83012	244773	230959	LARGE CAR	High	55838	VW MLB	EVO
VW	Volkswagen	ID.3	54495	0	54495	0	COMPACT CAR	Mid	36145	VW MEB	
Stellantis	Peugeot	5008	54468	76104	58418	85476	MIDSIZE X-OVER	Low	31801	PSA EMP	2
VW	Audi	Q5	53523	63915	245555	267231	MIDSIZE X-OVER	High	49210	VW MLB	EVO
Stellantis	Fiat	Tipo	53452	84789	53452	84789	COMPACT CAR	Low	17800	GM -Fiat	Wide LWB
VW	Skoda	Scala	53156	36218	53156	36218	COMPACT CAR	Low	20850	VW MQB	A0
HMC	Kia	Stonic/KX1	51498	64248	71813	99866	SMALL X-OVER	Low	19350	HMC GB	
Suzuki	Suzuki	Swift	51134	59875	51134	59893	SUBCOMPACT CAR	Low	17467	HEARTECT	
HMC	Hyundai	i30	50483	75739	50483	75739	COMPACT CAR	Low	22870	HMC J6	
HMC	Hyundai	i10	50233	78791	50233	78791	MINICAR	Low	14450	HMC BA	
HMC	Kia	Picanto	49211	74305	49211	74305	MINICAR	Low	12650	HMC BA	
Mazda	Mazda	CX-30	48801	14438	104985	15337	COMPACT X-OVER	Mid	28475		
VW	Volkswagen	Transporter/Multivan	47817	65663	47817	65663	Midsized PV	Mid	44855	7H / 7J	
HMC	Hyundai	Kona	47796	22545	50760	24266	SMALL X-OVER	Low	39650	HMC B-SUV	

Ford	Ford	Ecosport	47548	120376	110762	183899	SMALL X-OVER	Mid	21669	FORD B2E	
Stellantis	Jeep	Compass	47312	64714	175481	244393	COMPACT X-OVER	Mid	29350	GM -Fiat Small	Wide 4x4 LWB
VW	Volkswagen	Touran	47222	75427	58792	91847	MIDSIZE MPV	Mid	32158	VW MQB	1st GEN
BMW	Mini	Countryman	45139	56629	54502	70671	SMALL X-OVER	High	30250	BMW UKL2	
HMC	Kia	Xceed	45023	10080	45023	10080	SMALL X-OVER	Low	24000	HMC K2	
Daimler	Mercedes-Benz	B-Class	44664	73997	44665	74005	MIDSIZE MPV	High	34025	N/D	
Suzuki	Suzuki	Vitara	43727	81860	43830	85169	SMALL X-OVER	Low	26057	Suzuki Global C Platform	
Stellantis	Peugeot	108	43629	54230	43629	54230	MINICAR	Low	14340	PSA-Toyota Minicar	
Stellantis	Lancia	Ypsilon	43076	58820	43076	58820	SUBCOMPACT CAR	Low		FCA Mini	
BMW	BMW	X5	40961	44765	91474	99360	LARGE SUV	High	71900	BMW CLAR	
Stellantis	Citroën	C1	40578	49900	40578	49900	MINICAR	Low	14469	PSA-Toyota Minicar	
R-N-M	Nissan	Micra	39721	65240	39721	65240	SUBCOMPACT CAR	Mid	18707	N-R	B
Daimler	Mercedes-Benz	GLE	39657	24453	87810	73117	LARGE SUV	High	68775	N/D	
R-N-M	Dacia	Logan	38408	61304	38408	61304	SUBCOMPACT CAR	Low	11136	R-N-M CMF	B LS
Suzuki	Suzuki	Ignis	37568	38091	37568	38091	MINICAR	Low	16682	HEARTECT	
TATA	Range Rover	Evoque	37231	47374	59065	66369	COMPACT X-OVER	High	43566		
R-N-M	Renault	(Grand)Scenic	36592	76045	36592	76045	MIDSIZE MPV	Low	29210	R-N-M CMF	C/D
R-N-M	Mitsubishi	Space Star/Mirage	35703	38002	54839	38004,966	MINICAR	Mid	13150	Mitshubishi Mirage	
R-N-M	Mitsubishi	Outlander	33729	47381	117958	170306	MIDSIZE X-OVER	Mid	30400	R-N-M CMF	C/D
VW	Volkswagen	Golf	33650	28517	39480	47463	COMPACT CAR	Mid	32985	VW MQB	EVO
HMC	Kia	Rio/K2	33052	39721	76834	127332	SUBCOMPACT CAR	Low	16625	HMC GB	
BMW	BMW	X2	32745	45126	64696	62009	COMPACT X-OVER	High	35100	BMW UKL2	
BMW	BMW	2-series	32613	26867	47229	34882	COMPACT CAR	High	31200	BMW UKL2	
Mazda	Mazda	CX-5	31703	64860	211440	252982	MIDSIZE X-OVER	Mid	29700		
Stellantis	Peugeot	208	31287	30730	31287	30730	SUBCOMPACT CAR	Low	32250	PSA EMP	1
R-N-M	Nissan	Leaf	31177	31792	40736	44157	COMPACT CAR	Mid	35620	independent/N/D	
HMC	Kia	Niro	31019	10071	33826	11633	SMALL X-OVER	Low	36025	HMC ECO-CAR	
BMW	BMW	2-series	30482	55874	30493	59554	MIDSIZE MPV	High	29500	BMW UKL2	
Stellantis	Peugeot	508	29011	41329	34005	46337	MIDSIZE CAR	Low	32737	PSA EMP	2
VW	Audi	A5/S5/RS5	28525	41812	47353	64835	MIDSIZE CAR	High	44431	VW MLB	EVO
VW	Audi	e-Tron	27713	18382	34915	23751	LARGE SUV	High	75489	VW MLB	EVO
Daimler	Mercedes-Benz	GLB	27223	149	109908	5307	MIDSIZE X-OVER	High	40150	N/D	

Stellantis	Citroën	C4	26717	49599	26717	49599	MIDSIZE MPV	Low	27475	PSA EMP	2
Mazda	Mazda	Mazda3	26458	34874	53885	85615	COMPACT CAR	Mid	25145		
VW	Volkswagen	Tiguan	26443	39714	26443	39714	MIDSIZE X-OVER	Mid	39650	VW MQB	A2
Stellantis	Citroën	C4	26379	52600	26379	52600	SMALL X-OVER	Low	21045	PSA PF	1
HMC	Hyundai	Ioniq	26254	31978	39824	51552	COMPACT CAR	Low	26595	HMC ECO-CAR	
Honda	Honda	Jazz/Fit	25182	30730	120282	176524	SUBCOMPACT CAR	Mid	23150		
GEELY	Volvo	XC90	24584	29252	58835	65012	LARGE SUV	Mid	68800	VOLVO SPA	
Daimler	Mercedes-Benz	V-Class	24165	31342	40170	47604	Midsized PV	High	54609	N/D	
Stellantis	DS	DS7	24087	27940	24463	28774	MIDSIZE X-OVER	Mid	37166	PSA EMP	2
VW	Volkswagen	Sportsvan	23848	42113	34684	42541	MIDSIZE MPV	Mid	26339	VW MQB	EVO
GEELY	Volvo	S90/V90	23578	40315	26772	44367	LARGE CAR	Mid	48450	VOLVO SPA	
BMW	BMW	i3	23361	31604	24863	36457	MIDSIZE MPV	High	40700	independent	
VW	Volkswagen	Up!	21942	0	21942	0	MINICAR	Mid	22802	VW NSF GM -Fiat Small	Wide LWB
Stellantis	Fiat	500	21883	36495	22358	37266	SUBCOMPACT CAR	Low	18900		
TATA	Land Rover	Discovery	21348	27989	55428	66699	MIDSIZE X-OVER	High	419574		
VW	Seat	Tarraco	21229	29615	21229	29615	MIDSIZE X-OVER	Low	33650	VW MQB	A2
Ford	Ford	Mondeo	21222	39555	46249	57197	MIDSIZE CAR	Mid	32304	FORD CD4	
Stellantis	Opel	Insignia	21133	45925	21133	45925	MIDSIZE CAR	Mid	34815	GM E2XX	
Suzuki	Suzuki	S-Cross	20776	36154	20986	37622	SMALL X-OVER	Low	25776	Suzuki Global C Platform	
Ford	Ford	Tourneo	20555	23067	20555	23067	Midsized PV	Mid	40505		
Honda	Honda	CR-V	20239	32929	593724	630403	MIDSIZE X-OVER	Mid	40060		
SAIC	MG	ZS	19676	9872	103184	114823	SMALL X-OVER	Low			
R-N-M	Dacia	Lodgy	19639	28994	19639	28994	MIDSIZE MPV	Low	16190	R-N	B0 M0
Daimler	Smart	Fortwo	19576	11815	19576	65951	MINICAR	High	24450	N/D	
Stellantis	DS	DS3	19496	17828	19496	17828	SMALL X-OVER	Mid	26482	PSA EMP	1
R-N-M	Nissan	X-Trail	19376	25444	194553	233220	MIDSIZE X-OVER	Mid	29300	R-N-M CMF	C/D
VW	Porsche	Cayenne	18330	20102	36422	39103	LARGE SUV	High	90430	VW MLB	EVO
BMW	BMW	4-series	18139	35908	27634	54529	MIDSIZE CAR	High	48500	BMW CLAR	
R-N-M	Mitsubishi	ASX/Outlander Sport	17983	30622	56955	76637	SMALL X-OVER	Mid	24900	Mitsubishi GS	
Daimler	Mercedes-Benz	Vito	17765	23436	31682	35354	Midsized PV	High	33435	N/D	
TATA	Range Rover	Sport	17500	26291	37553	52059	LARGE SUV	High	80800		
Stellantis	Alfa Romeo	Stelvio	17438	26866	27720	36310	MIDSIZE X-OVER	High	54295	FCA Giorgio	

VW	Audi	Q7	17413	16127	42785	50776	LARGE SUV	High	71846	VW MLB	EVO
Honda	Honda	Civic	17282	37486	523633	607102	COMPACT CAR	Mid	24060		
Toyota	Lexus	UX	17077	17171	34039	33894	COMPACT X-OVER	High	34300	TNGA-C	
BMW	Mini	Clubman	16995	23933	19649	27498	COMPACT CAR	High	26300	BMW UKL2	
BMW	BMW	X4	16981	26434	24643	35192	MIDSIZE X-OVER	High	56000	BMW CLAR	
VW	Porsche	Macan	16865	24469	35498	47136	MIDSIZE X-OVER	High	71212	VW MLB	1st GEN
Mazda	Mazda	Mazda2	16402	37346	19658	37346	SUBCOMPACT CAR	Mid	19875		
Stellantis	Opel	Corsa	16110	0	16110	0	SUBCOMPACT CAR	Mid	31200	PSA EMP	1
VW	Porsche	911	15340	16384	24179	22649	LARGE SPORTS CAR	High	122358	independent	
VW	Seat	Alhambra	15179	23840	15179	23840	LARGE MPV	Low	42904	VW GROUP B	PQ46
TATA	Jaguar Mercedes-	E-Pace	14847	27690	20792	34800	COMPACT X-OVER	High	40950		
Daimler	Benz	EQC	14645	1432	18508	1432	MIDSIZE X-OVER	High	78600	N/D	
Honda	Honda	HR-V	14390	21747	98417	120851	SMALL X-OVER	Mid	27550		
VW	Volkswagen	Touareg	14275	25565	14278	25725	LARGE SUV	Mid	70025	VW MLB	EVO
VW	Skoda	Citigo	14120	30786	14120	30786	MINICAR	Low	22401	VW NSF	
R-N-M	Mitsubishi	Eclipse	13772	27110	31660	73283	COMPACT X-OVER	Mid	28550	Mitsubishi GS	
VW	Volkswagen	Arteon	13582	19048	17184	21497	MIDSIZE CAR	Mid	44827	VW MQB	1st GEN
TATA	Jaguar	I-Pace	13444	12232	15390	14826	MIDSIZE X-OVER	High	80570	JLR D7e	
Ford	Ford	S-Max	13375	22724	13375	22724	LARGE MPV	Mid	40288	FORD CD4	
Toyota	Lexus	NX	13284	17545	69068	76260	MIDSIZE X-OVER	High	46799	New MC	
VW	Audi	Q8	12983	17627	25055	31883	LARGE SUV	High	82971	VW MLB	EVO
TATA	Range Rover	Velar	12784	22770	25601	39857	MIDSIZE X-OVER	High	66600		
VW	Porsche	Taycan	12332	746	16736	876	LARGE CAR	High	85710	VW MSB	
R-N-M	Renault	Trafic Pass	11870	14389	11870	14389	Midsize PV	Low	32078	R-N VAN	
VW	Volkswagen	Sharan	11473	22665	11473	22665	LARGE MPV	Mid	47609	VW GROUP B	PQ46
TATA	Jaguar	F-Pace	11026	18884	21917	34375	MIDSIZE X-OVER	High	59994		
Stellantis	Alfa Romeo	Giulietta	10817	15690	10817	15690	COMPACT CAR	High	25995	Fiat Compact	C-Evo
BMW	BMW	X6	10460	4951	17751	9191	LARGE SUV	High	84900	BMW CLAR	
HMC	Hyundai	Ioniq	10325	8533	10325	10049	MIDSIZE CAR	Low	36150	HMC ECO-CAR	
Toyota	Toyota	Prius+	10254	13356	53779	83074	MIDSIZE MPV	Mid	30450	TNGA-C	
Suzuki	Suzuki	Jimny	10063	16605	10063	16605	SMALL X-OVER	Low		N/D	
Stellantis	Opel	Zafira	9696	0	9696	0	Midsize PV	Mid	42162	PSA EMP	2
Mazda	Mazda	MX-30	9477	0	9477	0	COMPACT X-OVER	Mid	34375		

Toyota	Toyota	Proace	9270	10947	9270	10947	Midsize PV	Mid	33000	PSA EMP	2
Toyota	Toyota	Camry	9119	7640	477029	529863	MIDSIZE CAR	Mid	39390	TNGA-K	
GEELY	Polestar	2	8746	0	8746	0	MIDSIZE CAR	High		GEELY CMA	
TATA	Land Rover	Defender	8729	1	17829	1	LARGE SUV	High	57450		
BMW	BMW	Z4	8314	9681	10678	12622	SMALL SPORTS CAR	High	51300	BMW CLAR	
Stellantis	Peugeot	Traveller	8312	11359	8312	11359	Midsize PV	Low	37330	PSA EMP	2
HMC	Kia	Soul	8038	5122	79900	103155	SMALL X-OVER	Low	35600	HMC GB	
R-N-M	Renault	Talisman	8025	16405	8025	16405	MIDSIZE CAR	Low	34380	R-N-M CMF	C/D
Ford	Ford	Galaxy	8018	12554	8018	12554	LARGE MPV	Mid	46076	FORD CD4	
TATA	Range Rover	Range Rover	7844	11705	21826	30536	LARGE SUV	High	123300		
VW	Seat	Mii	7790	12641	7790	12641	MINICAR	Low	21300	VW NSF	
Daimler	Smart	Forfour	7640	0	7640	36736	MINICAR	High	25150	S-R MINICAR	
VW	Audi	TT	7525	11079	8357	12403	SMALL SPORTS CAR	High	49459	VW MQB	1st GEN
Ford	Ford	Mustang	7495	10071	68585	82560	SMALL SPORTS CAR	Mid	54422	FORD S550	
BMW	BMW	8-series	7486	6640	15200	11050	UPPER-CLASS	High	103600	BMW CLAR	
Stellantis	Alfa Romeo	Giulia	7436	10932	15639	19636	MIDSIZE CAR	High	44750	FCA Giorgio	
Subaru	Subaru	XV	7341	10577	7341	10577	COMPACT X-OVER	Mid	25250		
Stellantis	Jeep	Wrangler	7262	7522	208572	235564	COMPACT X-OVER	Mid	54923	independent	
HMC	Hyundai	Santa Fe	7189	8962	119676	151896	LARGE SUV	Low	44500	HMC N3	
Mazda	Mazda	Mazda6	6950	22048	23154	43572	MIDSIZE CAR	Mid	33175		
R-N-M	Renault	Koleos	6916	12371	7494	20816	MIDSIZE X-OVER	Low	37147	R-N-M CMF	C/D
HMC	Kia	Sorento	6885	9703	81562	106234	LARGE SUV	Low	48700	HMC N3	
VW	Porsche	718	6663	7406	10110	11286	SMALL SPORTS CAR	High	67735	independent	
Stellantis	Citroën	Spacetourer	6548	11188	6548	11188	Midsize PV	Low	37374	PSA EMP	2
TATA	Land Rover	Discovery	6493	9766	12304	18950	LARGE SUV	High	70500		
Subaru	Subaru	Forester	6377	10257	183373	190436	MIDSIZE X-OVER	Mid	36650		
BMW	BMW	7-series	6346	9248	12331	18071	UPPER-CLASS	High	101400	BMW CLAR	
Daimler	Mercedes-Benz	G-Class	6342	8682	14065	14774	LARGE SUV	High	122700	N/D	
Stellantis	Fiat	500	6336	0	6336	0	MINICAR	Low	24900	FCA Mini	
Daimler	Mercedes-Benz	S-Class	6239	10571	14828	23074	UPPER-CLASS	High	108150	M-B MRA1	
HMC	Kia	Optima	6086	12202	54570	108825	MIDSIZE CAR	Low		HMC N3	
Tesla	Tesla	Model X	6007	7861	32107	27461	LARGE SUV	High	100970		

VW	Audi	A7/S7/RS7	5807	8185	8666	13140	LARGE CAR	High	71150	VW MLB	EVO
BMW	BMW	X7	5582	4643	28812	26217	LARGE SUV	High	104600	BMW CLAR	
Tesla	Tesla	Model S	5562	8635	22012	22735	LARGE CAR	High			
Toyota	Lexus	RX	5556	6805	106615	117841	LARGE SUV	High	77900	Toyota K	
VW	Cupra	Formentor	5350	0	5350	0	COMPACT X-OVER	High	31670	VW MQB	EVO
Mazda	Mazda	CX-3	5171	61962	13506	78191	SMALL X-OVER	Mid	22295		
R-N-M	Renault	Twingo	5106	0	5106	0	MINICAR	Low	22750	S-R MINICAR	
Stellantis	DS	DS3	4828	0	4828	0	SMALL X-OVER	Mid	39862	PSA EMP	1
Mazda	Mazda	MX-5	4815	13803	13622	21556	SMALL SPORTS CAR	Mid	28640		
VW	Volkswagen	ID.4	4810	0	4810	0	MIDSIZE X-OVER	Mid	35872	VW MEB	
Daimler	Mercedes-Benz	GLS	4795	2386	26967	25001	LARGE SUV	High	97776	N/D	
Mahindra	SsangYong	Korando	4737	2824	4737	2824	COMPACT X-OVER	Low	21550		
Stellantis	Jeep	Grand Cherokee	4636	7129	214422	250098	LARGE SUV	Mid	70420	WK2	
Toyota	Toyota	Prius	4605	7455	4605	7455	COMPACT CAR	Mid	32550	TNGA-C	
GEELY	Volvo	XC40	4580	598	4580	598	COMPACT X-OVER	Mid	52286	GEELY CMA	
Daimler	Mercedes-Benz	GLE	4570	4535	4570	4535	LARGE SUV	High	90638	N/D	
Toyota	Lexus	CT	4501	5295	4501	5295	COMPACT CAR	High	28700	New MC	
Toyota	Toyota	Land Cruiser	4489	6359	7635	9895	LARGE SUV	Mid	43000	Land Cruiser	
R-N-M	Renault	Espace	4390	9744	4390	9744	LARGE MPV	Low	46384	R-N-M CMF	C/D
VW	Porsche	Panamera	4308	8436	8179	15061	UPPER-CLASS	High	108339	VW MSB	
Honda	Honda	E	4028	0	4028	0	SUBCOMPACT CAR	Mid	38600		
Daimler	Mercedes-Benz	CLS	3895	8428	5498	9369	LARGE CAR	High	77228	M-B MRA1	
Subaru	Subaru	Legacy/Outback	3844	7504	184374	223745	MIDSIZE CAR	Mid	35400		
Mahindra	SsangYong	Tivoli	3831	5755	3831	5755	SMALL X-OVER	Low	17100		
TATA	Jaguar	XE/XEL	3780	7978	17773	23678	MIDSIZE CAR	High	49850		
Toyota	Lexus	ES	3699	3818	46991	55154	LARGE CAR	High	47900	TNGA-K	
Ford	Ford	Edge	3698	8616	138293	179945	LARGE SUV	Mid		FORD CD4	
VW	Audi	A8/S8	3648	4477	6023	7440	UPPER-CLASS	High	106968	VW MLB	EVO
Daimler	Mercedes-AMG	GT	3640	5644	6943	9728	LARGE SPORTS CAR	High	139450	N/D	
Stellantis	Citroën	C4	3441	129	3441	129	COMPACT CAR	Low	22323	PSA EMP	1
Stellantis	Citroën	C-Elysee	2780	6375	7612	26952	COMPACT CAR	Low	17242	PSA PF	1
Stellantis	Opel	Ampera	2775	2510	2775	2510	COMPACT CAR	Mid	37000	GM BEV2	

TATA	Jaguar	F-type	2713	3252	4414	5531	LARGE SPORTS CAR	High	73518	
SAIC	MG	MG3	2547	3820	20260	26286	SUBCOMPACT CAR	Low		
Stellantis	Fiat	Talento	2536	5235	2536	5235	Midsized PV	Low	31799	
Ford	Ford	Explorer	2526	0	249984	200037	LARGE SUV	Mid	79411	FORD CD6
TATA	Jaguar	XF/XFL	2450	5935	8794	12053	LARGE CAR	High	56484	
Suzuki	Suzuki	Baleno	2296	14429	2296	14429	SUBCOMPACT CAR	Low		HEARTECT
Suzuki	Suzuki	Swace	2263	0	2263	0	COMPACT CAR	Low	27828	TNGA-C
Stellantis	Jeep	Cherokee	2237	4915	148745	213589	MIDSIZE X-OVER	Mid	61359	Fiat Compact 4x4
Stellantis	Maserati	Levante	2184	3290	2184	3290	LARGE SUV	High	96900	N/D
BMW	BMW	6-series	2060	5362	2260	6501	LARGE CAR	High	66550	BMW CLAR
Daimler	Mercedes-Benz	SLC	2054	3985	4175	5901	SMALL SPORTS CAR	High		N/D
Suzuki	Suzuki	Celerio	2035	13275	2035	13275	MINICAR	Low		
Suzuki	Suzuki	Across	1953	0	1953	0	MIDSIZE X-OVER	Low	55383	TNGA-K
GEELY	Volvo	V40	1860	38795	1860	38795	COMPACT CAR	Mid		FORD Global C
Toyota	Lexus	IS	1855	3282	15455	18202	MIDSIZE CAR	High	40500	New N
Stellantis	Citroën	C-Zero	1839	980	1839	980	MINICAR	Low	21390	Mitsubishi i
R-N-M	Dacia	Spring	1724	0	1724	0	MINICAR	Low	16990	R-N-M CMF A
DR	DR	DR5	1560	798	1560	798	COMPACT X-OVER	Mid		
Stellantis	Opel	Vivaro	1489	7484	1489	7484	Midsized PV	Mid	29850	PSA EMP 2
VW	Bentley	Continental GT/GTC	1462	2142	1462	2142	EXOTIC CAR	High		VW MSB
HMC	Kia	Stinger	1387	3600	13943	17461	MIDSIZE CAR	Low	58500	
R-N-M	Lada	Niva	1362	2827	1362	2827	SMALL X-OVER	Mid		independent
R-N-M	Alpine	A110	1343	4376	1343	4376	SMALL SPORTS CAR	High		independent
Ferrari	Ferrari	488 GTB	1207	1340	1207	1340	EXOTIC CAR	High		
R-N-M	Nissan	NV300	1189	990	1189	990	Midsized PV	Mid	34442	R-N VAN
VW	Lamborghini	Urus	1087	967	1087	967	LARGE SUV	High		VW MLB EVO
Stellantis	Maserati	Ghibli	1006	1723	1006	1723	LARGE CAR	High	82700	N/D
HMC	Hyundai	Elantra	1003	1779	167059	303810	COMPACT CAR	Low		HMC J6
Ferrari	Ferrari	Portofino	991	1135	991	1135	LARGE SPORTS CAR	High		
VW	Bentley	Bentayga	975	991	975	991	LARGE SUV	High		VW MLB EVO
Ferrari	Ferrari	812 SF	975	814	975	814	EXOTIC CAR	High		
Mahindra	Mahindra	KUV100	956	956	956	956	SMALL X-OVER	Mid		
Subaru	Subaru	Levorg	825	1395	825	1395	MIDSIZE CAR	Mid	35850	

Ferrari	Ferrari	F8	747	41	747	41	EXOTIC CAR	High		
VW	Audi	R8	747	949	1330	1523	LARGE SPORTS CAR	High	197537	independent
HMC	Hyundai	ix20	726	16893	726	16893	SUBCOMPACT CAR	Low	19346	HMC PB
Toyota	Lexus	RC	710	1082	4518	5673	MIDSIZE CAR	High	53000	New N
DR	DR	DR4	694	722	694	722	SMALL X-OVER	Mid		
Toyota	Toyota	GT86	671	920	3147	4318	SMALL SPORTS CAR	Mid	34491	GT86
Stellantis	Peugeot	301	600	1406	611	6251	COMPACT CAR	Low		PSA PF 1
HMC	Hyundai	H1/Starex	596	2433	596	2433	Midsized PV	Low	35765	
BMW	BMW	i8	592	1077	784	2179	LARGE SPORTS CAR	High	146800	independent
DR	DR	DR6	566	679	566	679	COMPACT X-OVER	Mid		
R-N-M	Lada	Vesta	562	1541	562	1541	COMPACT CAR	Mid		independent
Aston Martin	Aston Martin	DB11	545	855	545	855	EXOTIC CAR	High		
DR	DR	DR3	524	855	524	855	SMALL X-OVER	Mid		
Subaru	Subaru	Impreza	514	1464	44142	67879	COMPACT CAR	Mid	26600	
VW	Lamborghini	Huracan	507	607	507	607	EXOTIC CAR	High		independent
Daimler	Mercedes-Benz	SL	505	885	2288	2676	LARGE SPORTS CAR	High	109573	N/D
HMC	Hyundai	Nexo	468	362	676	629	MIDSIZE X-OVER	Low		HMC ECO-CAR
VW	Bentley	Flying Spur	438	54	438	54	UPPER-CLASS	High		VW MSB
Aiways	Aiways	U5	430	0	3030	0	MIDSIZE X-OVER	Mid	35000	
Mahindra	SsangYong	Rexton	374	2315	374	2315	LARGE SUV	Low		
Aston Martin	Aston Martin	DBS	366	488	366	488	EXOTIC CAR	High		
VW	Lamborghini	Aventador	357	539	357	539	EXOTIC CAR	High		independent
Aston Martin	Aston Martin	Vantage	352	1029	352	1029	LARGE SPORTS CAR	High		
Stellantis	Peugeot	iOn	333	865	333	865	MINICAR	Low	26600	Mitsubishi i
R-N-M	Nissan	370Z	324	562	2279	2946	SMALL SPORTS CAR	Mid	34330	independent
Subaru	Subaru	BRZ	323	522	2590	2856	SMALL SPORTS CAR	Mid	36150	GT86
VW	Skoda	Rapid	311	28110	35436	83680	COMPACT CAR	Low		VW GROUP A PQ24
Mahindra	Mahindra	XUV500	307	119	307	119	MIDSIZE X-OVER	Mid		
Aston Martin	Aston Martin	DBX	305	0	305	0	LARGE SUV	High		
HMC	Hyundai	i40	305	3445	305	3445	MIDSIZE CAR	Low		
BMW	Rolls Royce	Cullinan	303	406	303	406	LARGE SUV	High		N/D

GEELY	Lotus	Elise	303	271	303	271	SMALL SPORTS CAR	High		Lotus Elise
Toyota	Lexus	LC	260	361	1553	1580	LARGE SPORTS CAR	High	124800	TNGA-L
Mahindra	SsangYong	XLV	251	1723	251	1723	SMALL X-OVER	Low		
GEELY	Lotus	Exige	250	290	250	290	SMALL SPORTS CAR	High		Lotus Elise
TATA	Jaguar	XJ	247	724	1365	724	UPPER-CLASS	High		
Toyota	Toyota	Highlander/Kluger	245	0	307825	337943	LARGE SUV	Mid	58999	TNGA-K
R-N-M	Infiniti	Q30	221	1380	221	1380	COMPACT CAR	High		Infiniti Small
VW	Skoda	Enyaq	186	0	186	0	MIDSIZE X-OVER	Low		VW MEB
Ford	Ford	Mustang	185	0	188	0	MIDSIZE X-OVER	Mid	48533	FORD GE1
Ferrari	Ferrari	GTC4Lusso	142	310	142	310	EXOTIC CAR	High		
Stellantis	Opel	Mokka	136	79693	136	79693	SMALL X-OVER	Mid	21824	PSA EMP 1
GM	Chevrolet	Camaro	121	1710	29898	49976	SMALL SPORTS CAR	Mid		GM Alpha I
Ford	Ford	(Grand) C-max	120	30218	120	30218	MIDSIZE MPV	Mid		FORD Global C
Stellantis	Maserati	Quattroporte	116	251	116	251	UPPER-CLASS	High	155900	N/D
Toyota	Lexus	LS	98	248	3748	5776	UPPER-CLASS	High	107500	TNGA-L
HMC	Kia	Venga	98	9602	98	9602	SUBCOMPACT CAR	Low		HMC PB
BMW	Rolls Royce	Ghost	89	92	89	92	UPPER-CLASS	High		N/D
BMW	Rolls Royce	Dawn	86	120	86	120	EXOTIC CAR	High		N/D
R-N-M	Mitsubishi	Pajero	83	551	83	551	LARGE SUV	Mid		N/D
Stellantis	Citroën	E-Mehari	78	154	78	154	MINICAR	Low		
Stellantis	Fiat	124	76	4717	1787	7363	SMALL SPORTS CAR	Low		
R-N-M	Mitsubishi	Pajero/Montero/Shogun	75	608	75	608	LARGE SUV	Mid		N/D
Toyota	Toyota	Auris	75	23643	75	23643	COMPACT CAR	Mid	20920	TNGA-C
R-N-M	Infiniti	Q50/Q50L	71	563	25583	38140	MIDSIZE CAR	High		Nissan FM
BMW	Rolls Royce	Wraith	71	102	71	102	EXOTIC CAR	High		N/D
Stellantis	Maserati	GranTurismo	71	230	71	230	LARGE SPORTS CAR	High		N/D
VW	Bentley	Mulsanne	69	112	69	112	UPPER-CLASS	High		N/D
Ford	Ford	Ka+	66	51482	66	51482	SUBCOMPACT CAR	Mid		FORD B2E
GEELY	Polestar	1	65	0	65	0	LARGE CAR	High		VOLVO SPA
R-N-M	Mitsubishi	i-MiEV	57	171	57	171	MINICAR	Mid		Mitsubishi MR
Stellantis	Maserati	GranCabrio	55	164	55	164	LARGE SPORTS CAR	High		N/D
BMW	Rolls Royce	Phantom	46	100	46	100	UPPER-CLASS	High		N/D
Ferrari	Ferrari	Roma	44	0	44	0	LARGE SPORTS CAR	High		

Aston Martin	Aston Martin	Rapide	34	86	34	86	UPPER-CLASS	High		
Stellantis	Fiat	Punto	27	480	27	480	SUBCOMPACT CAR	Low		
R-N-M	Infiniti	QX30	26	366	175	3595	COMPACT X-OVER	High		Infiniti Small
VW	Volkswagen	Jetta	19	84	82691	205700	COMPACT CAR	Mid		VW MQB A1
Stellantis	DS	DS3	12	6492	12	6492	SUBCOMPACT CAR	Mid		PSA EMP 1
VW	Volkswagen	Beetle	11	383	2492	17598	COMPACT CAR	Mid		VW GROUP A PQ35
Stellantis	Alfa Romeo	4C	11	201	110	346	SMALL SPORTS CAR	High	70000	
Ferrari	Ferrari	SF90 Stradale	8	0	8	0	EXOTIC CAR	High		
Honda	Honda	NSX	8	36	136	274	LARGE SPORTS CAR	High		
VW	Seat	Toledo	5	1281	5	1281	COMPACT CAR	Low		
Stellantis	Opel	Adam	5	31129	5	31129	MINICAR	Mid		
Mahindra	SsangYong	Rodius/Stavic	4	532	4	532	LARGE MPV	Low		
R-N-M	Infiniti	Q70	4	21	143	2573	LARGE CAR	High		Nissan FM
Suzuki	Suzuki	SX4	3	14	3	14	SMALL X-OVER	Low		
R-N-M	Nissan	Pulsar	2	560	2	560	COMPACT CAR	Mid		R-N-M CMF C/D
Stellantis	DS	DS4	2	192	2	192	COMPACT CAR	Mid		PSA PF 2
HMC	Kia	Carens	1	844	1	844	MIDSIZE MPV	Low		HMC J5
Toyota	Lexus	GS	1	163	2561	3541	LARGE CAR	High		New N
R-N-M	Infiniti	Q60	1	83	2793	5126	MIDSIZE CAR	High		Nissan FM
R-N-M	Mitsubishi	Attrage	1	88	1	88	MINICAR	Mid		Mitsubishi Mirage

Source: (CSB, 2020)

Table X - 3. USA PC Sales by model and type, 2020-2019

Group	Brand	Model	USA		Global		Type	EV
			2020	2019	2020	2019		
Ford	Ford	F-Series	787372	896526	787372	896526	PICK-UP	
GM	Chevrolet	Silverado	593057	575569	593057	575569	PICK-UP	
Stellantis	Ram	Pickup	563676	633694	563676	633694	PICK-UP	
Toyota	Toyota	RAV4	430387	448068	696088	665845	MIDSIZE X-OVER	
Honda	Honda	CR-V	323502	384168	593724	630403	MIDSIZE X-OVER	
Toyota	Toyota	Camry	294348	336978	477029	529863	MIDSIZE CAR	
GM	Chevrolet	Equinox	270994	346049	313772	396520	SMALL X-OVER	
Honda	Honda	Civic	261225	325650	523633	607102	COMPACT CAR	
GM	GMC	Sierra	253014	232325	253014	232325	PICK-UP	
Toyota	Toyota	Tacoma	238805	248801	238805	248801	PICK-UP	
Toyota	Toyota	Corolla	237178	304840	717805	793593	COMPACT CAR	
R-N-M	Nissan	Rogue	227936	350447	227936	350447	COMPACT X-OVER	
Ford	Ford	Explorer	226215	187061	249984	200037	LARGE SUV	
Toyota	Toyota	Highlander/Kluger	212276	239437	307825	337943	LARGE SUV	
Stellantis	Jeep	Grand Cherokee	209786	242969	214422	250098	LARGE SUV	
Stellantis	Jeep	Wrangler	201310	228042	208572	235564	COMPACT X-OVER	
Honda	Honda	Accord	199458	267567	410032	491273	MIDSIZE CAR	
Subaru	Subaru	Legacy/Outback	180530	216241	184374	223745	MIDSIZE CAR	
Ford	Ford	Escape	178495	241287	218008	241287	COMPACT X-OVER	
Subaru	Subaru	Forester	176996	180179	183373	190436	MIDSIZE X-OVER	
Mazda	Mazda	CX-5	146420	154543	211440	252982	MIDSIZE X-OVER	
R-N-M	Nissan	Altima	137988	209183	137988	209183	MIDSIZE CAR	
Tesla	Tesla	Model 3	137750	158925	359178	254093	MIDSIZE CAR	BEV
Stellantis	Jeep	Cherokee	135854	191397	148745	213589	MIDSIZE X-OVER	
Toyota	Toyota	4Runner	129052	131864	129052	131864	LARGE SUV	
GM	Chevrolet	Traverse	125546	147122	125546	147122	MIDSIZE X-OVER	
Honda	Honda	Pilot	123813	135008	123813	135008	MIDSIZE X-OVER	
HMC	Hyundai	Tucson	123657	137381	245608	306955	COMPACT X-OVER	
Subaru	Subaru	CrossTrek	119716	131152	119716	131152	COMPACT X-OVER	
Ford	Ford	Fusion	110665	166045	110665	166045	MIDSIZE CAR	
Toyota	Toyota	Tundra	109203	111673	109203	111673	PICK-UP	
Ford	Ford	Edge	108886	138514	138293	179945	LARGE SUV	
Stellantis	Jeep	Compass	107968	143933	175481	244393	COMPACT X-OVER	
GM	Chevrolet	Trax	106299	116817	106299	116817	COMPACT X-OVER	
HMC	Hyundai	Elantra	105475	175094	167059	303810	COMPACT CAR	
GM	Chevrolet	Malibu	102651	131917	148313	206658	MIDSIZE CAR	
HMC	Hyundai	Santa Fe	101513	127373	119676	151896	LARGE SUV	
Ford	Ford	Ranger	101485	83571	101485	83571	PICK-UP	
Toyota	Lexus	RX	101059	111036	106615	117841	LARGE SUV	
VW	Volkswagen	Tiguan	100687	109963	420738	552795	COMPACT X-OVER	
GM	Chevrolet	Colorado	96236	121703	96236	121703	PICK-UP	
R-N-M	Nissan	Sentra	94646	184618	94646	184618	COMPACT CAR	
GM	Chevrolet	Blazer	94598	58116	101742	58116	MIDSIZE X-OVER	

GM	Chevrolet	Tahoe	88237	101189	88237	101189	LARGE SUV	
GM	GMC	Terrain	86020	101407	86020	101407	COMPACT X-OVER	
HMC	Kia	Forte	84997	95609	105091	105771	COMPACT CAR	
HMC	Kia	Sportage	84343	88977	222109	285199	COMPACT X-OVER	
Stellantis	Chrysler	Pacifica	84113	97706	84113	97706	LARGE MPV	
Honda	Honda	HR-V	84027	99104	98417	120851	SMALL X-OVER	
Honda	Honda	Odyssey	83409	99113	125677	143594	LARGE MPV	
VW	Volkswagen	Jetta	82662	100453	82691	205700	COMPACT CAR	
HMC	Hyundai	Palisade	81905	28736	81905	28736	MIDSIZE X-OVER	
Ford	Ford	Expedition	77838	86423	77838	86423	LARGE SUV	
Stellantis	Jeep	Gladiator	77541	40038	77541	40038	PICK-UP	
Stellantis	Dodge	Charger	77425	96935	77425	96935	LARGE CAR	
HMC	Hyundai	Sonata	76997	87466	76997	87466	MIDSIZE CAR	
VW	Volkswagen	Atlas	76283	81508	76283	81508	MIDSIZE X-OVER	
HMC	Hyundai	Kona	76253	73326	204304	182552	SMALL X-OVER	
HMC	Kia	Telluride	75119	58932	75119	58932	MIDSIZE X-OVER	
HMC	Kia	Sorento	74677	96531	81562	106234	LARGE SUV	
GM	GMC	Acadia	72538	99430	72538	99430	MIDSIZE X-OVER	
HMC	Kia	Soul	71862	98033	79900	103155	SMALL X-OVER	
Subaru	Subaru	Ascent	67623	81958	67623	81958	LARGE SUV	
GM	GMC	Yukon	63442	74672	63442	74672	LARGE SUV	
Stellantis	Jeep	Renegade	62847	76886	124299	161368	SMALL X-OVER	
Ford	Ford	Mustang	61090	72489	68585	82560	LARGE SPORTS CAR	
Ford	Ford	Ecosport	60544	60599	110762	183899	SMALL X-OVER	
BMW	BMW	X3	59777	70110	257211	273075	MIDSIZE X-OVER	
R-N-M	Nissan	Kicks	58858	58193	85231	105978	MIDSIZE X-OVER	
R-N-M	Nissan	Murano	58256	68361	73313	68361	MIDSIZE X-OVER	
Stellantis	Dodge	Durango	57828	67598	57828	67598	LARGE SUV	
Toyota	Lexus	NX	55784	58715	69068	76260	MIDSIZE X-OVER	
R-N-M	Nissan	Frontier	54817	72369	54817	72369	PICK-UP	
Stellantis	Dodge	Challenger	52955	60997	52955	60997	LARGE SPORTS CAR	
Honda	Acura	RDX	52785	62876	52785	62876	COMPACT X-OVER	
Daimler	Mercedes-Benz	GLC	52626	72439	312386	324391	MIDSIZE X-OVER	
BMW	BMW	X5	50513	54595	91474	99360	LARGE SUV	
R-N-M	Nissan	Pathfinder	48579	65691	48579	65691	MIDSIZE X-OVER	
HMC	Kia	Optima	48484	96623	54570	108825	MIDSIZE CAR	
R-N-M	Nissan	Versa	48272	66596	48272	66596	COMPACT CAR	
Daimler	Mercedes-Benz	GLE	48153	48664	87810	73117	LARGE SUV	
Honda	Acura	MDX	47816	52019	47816	52019	MIDSIZE X-OVER	
VW	Audi	Q5	47384	67516	245555	267231	MIDSIZE X-OVER	
HMC	Kia	Seltos / KX3	46280	0	90941	7526	COMPACT X-OVER	
GM	Buick	Encore	44353	51200	64891	72581	SMALL X-OVER	
Subaru	Subaru	Impreza	43628	66415	44142	67879	COMPACT CAR	
Toyota	Toyota	Prius+	43525	69718	53779	83074	MIDSIZE MPV	PHEV
Toyota	Lexus	ES	43292	51336	46991	55154	LARGE CAR	
Toyota	Toyota	C-HR/IZOA	42936	48930	242792	281166	COMPACT X-OVER	
Toyota	Toyota	Sienna	42885	73585	42885	73585	LARGE MPV	

GM	Buick	Encore	42240	51200	59822	51200	SMALL X-OVER	
BMW	BMW	3-series/L	41442	47827	315975	281525	MIDSIZE CAR	
Stellantis	Dodge	Journey	40341	74687	40341	74687	MIDSIZE X-OVER	
Tesla	Tesla	Model Y	40001	0	40001	0	MIDSIZE X-OVER	BEV
Honda	Honda	Passport	39567	36285	39567	36285	MIDSIZE X-OVER	
Stellantis	Dodge	Grand Caravan	38765	122648	38765	122648	LARGE MPV	
GM	Buick	Enclave	38479	51156	61303	56721	MIDSIZE X-OVER	
Mazda	Mazda	CX-30	38064	899	104985	15337	COMPACT X-OVER	
GM	Chevrolet	TrailBlazer	37289	0	40962	5460	SMALL X-OVER	
GM	Cadillac	XT5	35224	49878	97315	112453	MIDSIZE X-OVER	
GM	Buick	Envision	34616	33230	34616	33230	COMPACT X-OVER	
GEELY	Volvo	XC90	34251	35760	58835	65012	LARGE SUV	
GM	Chevrolet	Suburban	33644	51928	33644	51928	LARGE SUV	
GM	Chevrolet	Spark	33478	31281	66956	62562	MINICAR	
Honda	Honda	Jazz/Fit	32488	35414	120282	176524	SUBCOMPACT CAR	
Honda	Honda	Ridgeline	32168	33334	32168	33334	PICK-UP	
GEELY	Volvo	XC60	32078	30578	102611	112454	MIDSIZE X-OVER	
HMC	Kia	K5	31656	0	49728	2121	MIDSIZE CAR	
GM	Chevrolet	Camaro	29777	48266	29898	49976	LARGE SPORTS CAR	
R-N-M	Mitsubishi	ASX/Outlander Sport	28835	26144	56955	76637	SMALL X-OVER	
Toyota	Lexus	GX	28519	25945	28519	25945	LARGE SUV	
Mazda	Mazda	CX-9	27638	26861	27638	26861	MIDSIZE X-OVER	
Mazda	Mazda	Mazda3	27427	50741	53885	85615	COMPACT CAR	
VW	Audi	Q3	27252	14822	144292	121111	COMPACT X-OVER	
R-N-M	Mitsubishi	Outlander	27133	37965	117958	170306	MIDSIZE X-OVER	
BMW	BMW	5-series/L	26785	38709	272534	319138	LARGE CAR	
R-N-M	Nissan	Titan	26441	31514	26441	31514	PICK-UP	
Daimler	Mercedes-Benz	C-Class	26294	49151	260503	347058	MIDSIZE CAR	
Ford	Lincoln	MKC	26226	25816	26226	25816	MIDSIZE X-OVER	
Tesla	Tesla	Model X	26100	19600	32107	27461	LARGE SUV	BEV
VW	Volkswagen	Golf	25858	37393	401985	553967	COMPACT CAR	
Daimler	Mercedes-Benz	E-Class/L	25499	39172	245570	304129	LARGE CAR	
VW	Audi	Q7	25372	34649	42785	50776	LARGE SUV	
Daimler	Mercedes-Benz	GLA	25348	21514	81348	131395	COMPACT X-OVER	
GM	GMC	Canyon	25191	32826	25191	32826	PICK-UP	
GM	Cadillac	Escalade	24545	35424	24545	35424	LARGE SUV	
HMC	Kia	Rio/K2	23927	24961	76834	127332	SUBCOMPACT CAR	
GEELY	Volvo	XC40	23778	17647	134032	100104	COMPACT X-OVER	
BMW	BMW	X7	23230	21574	28812	26217	LARGE SUV	
Daimler	Mercedes-Benz	GLB	23185	1173	109908	5307	MIDSIZE X-OVER	
Ford	Lincoln	Aviator	23080	8324	31898	8324	MIDSIZE X-OVER	
VW	Volkswagen	Passat	22964	14123	267342	346830	MIDSIZE CAR	
R-N-M	Infiniti	QX60	22879	43162	22879	43162	MIDSIZE X-OVER	
Ford	Lincoln	MKX/Nautilus	22743	31610	22744	45623	MIDSIZE X-OVER	
GM	Cadillac	XT6	22610	11560	49165	17355	LARGE SUV	
GM	Cadillac	XT4	22473	31987	80505	79041	COMPACT X-OVER	

Daimler	Mercedes-Benz	GLS	22172	22615	26967	25001	LARGE SUV	
Honda	Acura	TLX	21785	26548	21785	26548	MIDSIZE CAR	
GM	Chevrolet	Corvette	21627	17988	21627	17988	LARGE SPORTS CAR	
Subaru	Subaru	WRX	21178	21838	21178	21838	COMPACT CAR	
R-N-M	Infiniti	QX50	20885	18616	37601	42061	COMPACT X-OVER	
GM	Chevrolet	Bolt	20754	16418	20754	16418	COMPACT CAR	BEV
TATA	Rover	Sport	20053	25768	37553	52059	LARGE SUV	
R-N-M	Nissan	Armada	19638	32044	19638	32044	LARGE SUV	
R-N-M	Mitsubishi	Space Star/Mirage	19136	2966	54839	33968	MINICAR	
VW	Audi	A5/S5/RS5	18828	23023	47353	64835	MIDSIZE CAR	
VW	Porsche	Macan	18633	22667	35498	47136	MIDSIZE X-OVER	
Toyota	Toyota	Avalon	18421	27767	110208	90096	LARGE CAR	
VW	Audi	A4/S4/RS4/A4L	18341	26435	226762	297118	MIDSIZE CAR	
VW	Porsche	Cayenne	18092	19001	36422	39103	LARGE SUV	
R-N-M	Nissan	Maxima	18062	35076	18070	35080	LARGE CAR	
HMC	Hyundai	Venue	17587	1077	17587	1077	COMPACT X-OVER	
HMC	Kia	Niro	17434	24421	95264	81758	SMALL X-OVER	HEV/PHEV
Toyota	Lexus	UX	16962	16723	34039	33894	COMPACT X-OVER	
GEELY	Volvo	S60/V60	16828	20190	74831	86107	MIDSIZE CAR	
Stellantis	Chrysler	300	16653	29213	16653	29213	LARGE CAR	
R-N-M	Infiniti	Q50/Q50L	16533	25987	25583	38140	MIDSIZE CAR	
Tesla	Tesla	Model S	16450	14100	22012	22735	LARGE CAR	BEV
Mazda	Mazda	Mazda6	16204	21524	23154	43572	MIDSIZE CAR	
R-N-M	Infiniti	QX80	16125	19113	16125	19113	LARGE SUV	
BMW	Mini	Mini	16090	18558	126754	153152	SUBCOMPACT CAR	
HMC	Hyundai	Accent	15975	25628	15975	25628	SUBCOMPACT CAR	
Honda	Honda	Insight	15932	23686	15932	23686	COMPACT CAR	
Daimler	Mercedes-Benz	A-Class	15332	17641	242350	285382	COMPACT CAR	
Ford	Lincoln	Navigator	15253	18656	33909	22073	LARGE SUV	
GM	Cadillac	CT5	14711	43	59737	6234	LARGE CAR	
BMW	BMW	2-series	14616	8015	47229	34882	COMPACT CAR	
BMW	BMW	X1	14368	17815	197950	223686	COMPACT X-OVER	
TATA	Rover	Range Rover	13982	18831	21826	30536	LARGE SUV	
Toyota	Lexus	IS	13600	14920	15455	18202	MIDSIZE CAR	
HMC	Hyundai	Ioniq	13570	19574	39824	51552	COMPACT CAR	HEV/PHEV
Honda	Acura	ILX	13414	14685	13414	14685	COMPACT CAR	
Toyota	Toyota	HarrierVenza	13073	0	13073	0	MIDSIZE X-OVER	
GM	Chevrolet	Sonic	13007	13970	13007	13970	MINICAR	
TATA	Rover	Velar	12817	17087	25601	39857	MIDSIZE X-OVER	
HMC	Kia	Stinger	12556	13861	13943	17461	MIDSIZE CAR	
Ford	Lincoln	MKZ	12518	17725	12518	23725	MIDSIZE CAR	
VW	Audi	Q8	12072	14256	25055	31883	LARGE SUV	
VW	Volkswagen	Atlas	11078	0	11078	0	MIDSIZE X-OVER	
Daimler	Mercedes-Benz	CLA	10997	12400	78316	74358	COMPACT CAR	
TATA	Jaguar	F-Pace	10891	15491	21917	34375	MIDSIZE X-OVER	
VW	Audi	A6/S6/RS6/Allroad/A6L	10535	17807	244773	230959	LARGE CAR	

TATA	Range Rover	Evoque	10510	11529	59065	66369	COMPACT X-OVER	
R-N-M	Mitsubishi	Eclipse	10319	19661	31660	73283	COMPACT X-OVER	
Stellantis	Alfa Romeo	Stelvio	10282	9444	27720	36310	MIDSIZE X-OVER	
GM	Chevrolet	Impala	9942	44978	9942	44978	LARGE CAR	
VW	Audi	A3/S3/RS3	9937	10418	184341	219440	COMPACT CAR	
Stellantis	Chrysler	Town/Country	9690	0	9690	0	LARGE MPV	
R-N-M	Nissan	Leaf	9559	12365	40736	44157	COMPACT CAR	BEV
BMW	BMW	4-series	9495	18621	27634	54529	MIDSIZE CAR	
HMC	Genesis	G70	9436	11901	9436	11901	MIDSIZE CAR	
BMW	Mini	Countryman	9363	14042	54502	70671	SMALL X-OVER	
TATA	Land Rover	Defender	9100	0	17829	1	LARGE SUV	
VW	Porsche	911	8839	6265	24179	22649	LARGE SPORTS CAR	
Mazda	Mazda	MX-5	8807	7753	13622	21556	SMALL SPORTS CAR	
Daimler	Mercedes-Benz	S-Class	8589	12503	14828	23074	UPPER-CLASS	
Mazda	Mazda	CX-3	8335	16229	13506	78191	SMALL X-OVER	
Stellantis	Alfa Romeo	Giulia	8203	8704	15639	19636	MIDSIZE CAR	
TATA	Land Rover	Discovery	7760	12337	55428	66699	MIDSIZE X-OVER	
Daimler	Mercedes-Benz	G-Class	7723	6092	14065	14774	LARGE SUV	
BMW	BMW	8-series	7714	4410	15200	11050	UPPER-CLASS	
BMW	BMW	X4	7662	8758	24643	35192	MIDSIZE X-OVER	
BMW	BMW	X2	7368	11293	64696	62009	COMPACT X-OVER	
Toyota	Toyota	Sequoia	7364	10289	7364	10289	LARGE SUV	
BMW	BMW	X6	7291	4240	17751	9191	LARGE SUV	
VW	Audi	e-Tron	7202	5369	34915	23751	LARGE SUV	BEV
HMC	Hyundai	Veloster	6785	12849	6785	12849	COMPACT CAR	
Toyota	Toyota	Yaris/L/L-sedan	6422	21916	300025	348256	SUBCOMPACT CAR	
BMW	BMW	7-series	5985	8823	12331	18071	UPPER-CLASS	
Toyota	Toyota	Supra	5887	2884	5887	2884	LARGE SPORTS CAR	
TATA	Land Rover	Discovery	5811	9184	12304	18950	LARGE SUV	
Ford	Ford	Bronco	5318	0	5318	0	COMPACT X-OVER	
Ford	Lincoln	Continental	5262	6586	5262	6586	LARGE CAR	
GM	Cadillac	CT4	4889	0	21505	0	MIDSIZE CAR	
Ford	Ford	Flex	4849	20308	4849	20308	LARGE SUV	
Toyota	Lexus	LX	4512	4718	4512	4718	LARGE SUV	
VW	Porsche	Taycan	4404	130	16736	876	LARGE CAR	BEV
Honda	Honda	Clarity	4215	11654	4215	11654	MIDSIZE CAR	FCV
VW	Porsche	Panamera	3871	6625	8179	15061	UPPER-CLASS	
Toyota	Lexus	RC	3808	4591	4518	5673	MIDSIZE CAR	
TATA	Jaguar	E-Pace	3696	4782	20792	34800	COMPACT X-OVER	
Toyota	Lexus	LS	3650	5528	3748	5776	UPPER-CLASS	
VW	Volkswagen	Arteon	3602	2449	17184	21497	MIDSIZE CAR	
VW	Porsche	718	3447	3880	10110	11286	SMALL SPORTS CAR	
HMC	Genesis	G80	3359	7094	3359	7094	LARGE CAR	
Ford	Ford	Fiesta	3354	60148	159421	289107	SUBCOMPACT CAR	
Daimler	Mercedes-AMG	GT	3303	4084	6943	9728	LARGE SPORTS CAR	
Mazda	Mazda	Mazda2	3256	0	19658	37346	SUBCOMPACT CAR	
GEELY	Volvo	S90/V90	3194	4052	26772	44367	LARGE CAR	

Toyota	Toyota	Land Cruiser	3146	3536	7635	9895	LARGE SUV	
GM	Cadillac	CT6	3117	7952	24806	30589	LARGE CAR	
HMC	Hyundai	Kona	2964	1721	50760	24266	SMALL X-OVER	BEV
VW	Audi	A7/S7/RS7	2859	4955	8666	13140	LARGE CAR	
HMC	Kia	Niro	2807	1562	33826	11633	SMALL X-OVER	BEV
R-N-M	Infiniti	Q60	2792	5043	2793	5126	MIDSIZE CAR	
BMW	Mini	Clubman	2654	3565	19649	27498	COMPACT CAR	
Toyota	Lexus	GS	2560	3378	2561	3541	LARGE CAR	
GM	Buick	Regal	2484	10363	138361	133950	MIDSIZE CAR	
VW	Volkswagen	Beetle	2481	17215	2492	17598	COMPACT CAR	
Toyota	Toyota	GT86	2476	3398	3147	4318	SMALL SPORTS CAR	
VW	Audi	A8/S8	2375	2963	6023	7440	UPPER-CLASS	
BMW	BMW	Z4	2364	2941	10678	12622	SMALL SPORTS CAR	
Subaru	Subaru	BRZ	2267	2334	2590	2856	SMALL SPORTS CAR	
Daimler	Mercedes-Benz	SLC	2121	1916	4175	5901	SMALL SPORTS CAR	
HMC	Genesis	G90	2072	2239	2072	2239	LARGE CAR	
R-N-M	Nissan	370Z	1955	2384	2279	2946	SMALL SPORTS CAR	
TATA	Jaguar	I-Pace	1946	2594	15390	14826	MIDSIZE X-OVER	BEV
Daimler	Mercedes-Benz	SL	1783	1791	2288	2676	LARGE SPORTS CAR	
Stellantis	Fiat	124	1711	2646	1787	7363	SMALL SPORTS CAR	
TATA	Jaguar	F-type	1701	2279	4414	5531	LARGE SPORTS CAR	
TATA	Jaguar	XE/XEL	1686	3551	17773	23678	MIDSIZE CAR	
Daimler	Mercedes-Benz	CLS	1603	941	5498	9369	LARGE CAR	
HMC	Genesis	GV80	1517	0	1517	0	MIDSIZE X-OVER	
BMW	BMW	i3	1502	4853	24863	36457	MIDSIZE MPV	BEV
Stellantis	Fiat	500	1444	2519	60297	91880	SMALL X-OVER	
HMC	Kia	Sedona	1319	15843	1319	15843	LARGE MPV	
Toyota	Lexus	LC	1293	1219	1553	1580	LARGE SPORTS CAR	
HMC	Kia	Cadenza	1265	1630	1265	1630	LARGE CAR	
GM	Cadillac	XTS	1200	11306	1201	53540	LARGE CAR	
TATA	Jaguar	XJ	1118	0	1365	724	UPPER-CLASS	
Honda	Acura	RLX	1054	1019	1054	1019	LARGE CAR	
VW	Audi	TT	832	1324	8357	12403	SMALL SPORTS CAR	
GM	Chevrolet	Cruze	784	47975	784	58513	COMPACT CAR	
TATA	Jaguar	XF/XFL	749	1187	8794	12053	LARGE CAR	
VW	Volkswagen	Golf	747	18277	39480	47463	COMPACT CAR	BEV
Stellantis	Fiat	500	674	3267	141987	178284	MINICAR	
GM	Cadillac	CTS	611	6965	611	6965	LARGE CAR	
VW	Audi	R8	583	574	1330	1523	LARGE SPORTS CAR	
Honda	Honda	CR-Z	552	0	552	0	COMPACT CAR	HEV
Toyota	Toyota	Mirai	499	1502	499	1502	COMPACT CAR	
Stellantis	Fiat	500	475	771	22358	37266	SUBCOMPACT CAR	
Ford	Lincoln	MKT	329	3388	329	3388	MIDSIZE X-OVER	
HMC	Kia	K900	305	392	305	392	LARGE CAR	
R-N-M	Nissan	GT-R	303	331	303	331	LARGE SPORTS CAR	
GM	Buick	LaCrosse	229	7241	55204	47178	COMPACT CAR	
HMC	Hyundai	Nexo	208	267	676	629	MIDSIZE X-OVER	FCEV

BMW	BMW	6-series	200	1139	2260	6501	LARGE CAR LARGE SPORTS CAR	HEV
BMW	BMW	i8	192	1102	784	2179		
R-N-M	Infiniti	QX30	149	3229	175	3595	COMPACT X-OVER	
R-N-M	Infiniti	Q70	139	2552	143	2573	LARGE CAR	
Honda	Honda	NSX	128	238	136	274	LARGE SPORTS CAR	
Ford	Ford	Ford GT	125	698	125	698	EXOTIC CAR	
GM	Cadillac	ATS/ATS-L	116	1134	26136	58361	MIDSIZE CAR	
Stellantis	Alfa Romeo	4C	99	145	110	346	SMALL SPORTS CAR	
GM	Chevrolet	Volt	71	4910	71	4910	COMPACT CAR	
VW	Volkswagen	CC	17	58	28445	23865	COMPACT CAR	
GM	Buick	Cascada	12	2535	12	2535	COMPACT CAR	
Stellantis	Chrysler	200	9	48	9	48	MIDSIZE CAR	
Stellantis	Dodge	Dart	7	15	7	15	COMPACT CAR	
Stellantis	Dodge	Viper	6	0	6	0	LARGE SPORTS CAR	
VW	Volkswagen	Touareg	3	160	14278	25725	LARGE SUV	
Ford	Ford	Mustang	3	0	188	0	MIDSIZE X-OVER	BEV
Daimler	Mercedes-Benz	B-Class	1	8	44665	74005	MIDSIZE MPV	

Source: (GCBC, 2020)

Table X - 4. Chinese PC Sales by model, 2020-2019

Brand	Model	China		Combined	
		2020	2019	2020	2019
Nissan	Sylphy	538680	462598	538680	462598
Volkswagen	Lavida	419793	533186	419793	533186
Haval	H6	376864	386405	376864	386405
Toyota	Corolla	343418	355156	717805	793593
Volkswagen	Bora	331682	334668	331682	334668
Volkswagen	Sagitar	299839	307323	299839	307323
Buick	Excelle	295857	249280	295857	249280
Wuling	Hongguang	262962	374878	262962	374878
Honda	CR-V	249983	213306	593724	630403
Honda	Civic	245126	243966	523633	607102
GEELY	Atlas	240811	232327	240811	232327
GEELY	Emgrand 7	223369	182514	223369	182514
Honda	Accord	210574	223706	410032	491273
Toyota	Ralink	190676	219612	190676	219612
BMW	5-series/L	185935	191103	272534	319138
Audi	A6/S6/RS6/Allroad/A6L	178501	130140	244773	230959
Volkswagen	Tayron	176595	179428	176595	179428
Volkswagen	Santana	175728	255836	175728	255836
Nissan	X-Trail	175177	207776	194553	233220
Toyota	RAV4	174940	125977	696088	665845
Toyota	Camry	173562	185245	477029	529863
Volkswagen	Tiguan	170206	217784	420738	552795
Honda	XR-V	168272	147203	168272	147203
Nissan	Qashqai	161193	179773	297022	398719

Mercedes-Benz	GLC	160600	142857	312386	324391
Roewe	RX5	157636	156698	157636	156698
Buick	GL8	156879	148121	156879	148121
Honda	Breeze	156306	9007	156306	9007
BMW	3-series/L	156164	109161	315975	281525
Haval	M6	154470	118811	154470	118811
Mercedes-Benz	C-Class	152300	154614	260503	347058
Honda	Vezel	150363	106788	150363	106788
Mercedes-Benz	E-Class/L	149900	157504	245570	304129
Changan	Eado	146935	67511	146935	67511
Volkswagen	Tharu	146926	138235	146926	138235
Audi	Q5	144648	135800	245555	267231
Changan	CS75	144255	193277	144255	193277
Chery	Tiggo 8	136182	116494	136182	116494
Buick	Regal	135877	123587	138361	133950
BMW	X3	135694	121500	257211	273075
Tesla	Model 3	135449	0	359178	254093
Chevrolet	Monza	133024	141795	133024	141795
BYD	Song	132130	85470	132130	85470
Audi	A4/S4/RS4/A4L	130906	167689	226762	297118
Volkswagen	Passat	129015	208057	267342	346830
Wuling	Hongguang Mini EV	126603	0	126603	0
GAC	Trumpchi GS4	125574	103373	125574	103373
GEELY	Coolray	124456	136325	124456	136325
Changan	CS75	122093	0	122093	0
Nissan	Teana	121651	98549	121651	98549
Haval	F7	116453	140770	116453	140770
Toyota	Yaris/L/L-sedan	113736	115124	300025	348256
Honda	Crider	113379	154053	113379	154053
Volkswagen	T-Roc	109605	126859	268243	334835
Changan	CS55	99694	112219	99694	112219
Toyota	C-HR/IZOA	98604	112450	242792	281166
Roewe	I5	96047	30550	96047	30550
Toyota	Highlander/Kluger	95304	98506	307825	337943
Changan	CS35	95211	141701	95211	141701
BMW	X1	95096	97364	197950	223686
Hongqi	HS5	94571	29266	94571	29266
Toyota	Avalon	91787	62329	110208	90096
GEELY	Emgrand GS	91551	101971	91551	101971
Volkswagen	Golf	91114	105795	401985	553967
Baojun	530	89428	83079	89428	83079
Oushang	X7	86465	11764	86465	11764
Jetour	X70 Plus	85912	128129	85912	128129
Mazda	Mazda3	85191	98553	85191	98553
GEELY	Vision X6	83911	81934	83911	81934
MG	ZS	83508	104951	103184	114823

Toyota	Wildlander	82071	0	82071	0
Wuling	Rongguang V	76925	0	76925	0
Audi	A3/S3/RS3	76912	84600	184341	219440
Volkswagen	Teramont	76817	84003	76817	84003
Chery	Arrizo GX	76741	72531	76741	72531
GEELY	Emgrand SL (Binrui)	72360	83548	72360	83548
Chery	Tiggo 4	71677	60245	71677	60245
GEELY	Vision X3	70060	94935	70060	94935
Lynk&Co	o3	69775	52672	69775	52672
Kia	Sportage	68750	85708	222109	285199
Changan	UNI-T	68646	0	68646	0
Mercedes-Benz	A-Class	68063	68815	242350	285382
Baojun	RS-3	66587	20335	66587	20335
Hyundai	Celesta	66259	98052	66259	98052
Volkswagen	Lamando	66020	101505	66020	101505
Chery	Tiggo 7	64991	14146	64991	14146
Volkswagen	T-Cross	63495	44523	176815	145752
Honda	Jazz/Fit	62612	110380	120282	176524
Cadillac	XT5	62091	62575	97315	112453
Hongqi	H5	61860	45092	61860	45092
MG	MG6	61745	58668	61745	58668
Hyundai	Elantra	60581	126937	167059	303810
Baojun	510	60570	158201	60570	158201
Nissan	Tiida	60374	76195	60374	76195
Mercedes-Benz	GLB	59500	3985	109908	5307
Dongfeng	LingZhi	59288	62637	59288	62637
Hyundai	ix35	58277	131894	58277	131894
Cadillac	XT4	58032	47054	80505	79041
Mitsubishi	Outlander	57096	84960	117958	170306
Honda	Inspire	55170	56266	55170	56266
Buick	LaCrosse	54975	39937	55204	47178
Dongfeng	Fengguang 580	53915	79427	53915	79427
Toyota	Vios	53594	58332	53594	58332
Honda	Avancier	52619	71552	52619	71552
Mazda	CX-4	51175	49419	51175	49419
Roewe	I5	51113	128395	51113	128395
Wuling	Rongguang	49745	0	49745	0
Chery	Tiggo 3	46794	35315	46794	35315
ORA	Black Cat	46774	28498	46774	28498
GEELY	Vision	46664	79994	46664	79994
GAC	Aion S	46141	32126	46141	32126
BYD	Qin	46038	5503	46038	5503
Chevrolet	Malibu	45662	74741	148313	206658
Volkswagen	Polo	45071	73459	214538	331263
Cadillac	CT5	45026	6191	59737	6234
Baojun	730	44897	98912	44897	98912
Honda	Envix	44751	49874	44751	49874

Kia	Seltos / KX3	44661	7526	90941	7526
Honda	Elysion	44513	31630	44513	31630
GAC	Trumpchi GS3	43399	72607	43399	72607
Chevrolet	Equinox	42778	50471	313772	396520
Wey	VV6	42293	57724	42293	57724
Honda	Odyssey	42268	44481	125677	143594
Jetour	X90	41818	8818	41818	8818
Audi	Q2	40336	31368	40336	31368
Skoda	Kamiiq	40039	52660	115598	64875
Ford	Escape	39513	0	218008	241287
GAC	Trumpchi GM6	39509	35663	39509	35663
Chevrolet	Cavalier	39261	101765	39261	101765
Hyundai	ix25	38297	42879	38297	42879
MG	HS	37416	43169	37416	43169
Mazda	Mazda6	36297	41950	36297	41950
Hyundai	Reina	35350	50763	35350	50763
Skoda	Rapid	35125	55570	35436	83680
GEELY	Hao Yue	34521	0	34521	0
Ford	Focus	34506	50738	208359	287619
GAC	Trumpchi GM8	33974	23097	33974	23097
Chevrolet	Spark	33478	31281	66956	62562
Mazda	CX-5	33317	33579	211440	252982
Ford	Escort	33049	62842	33049	62842
Dongfeng	T5	32693	45304	32693	45304
Ideal	One	32624	0	32624	0
Lynk&Co	o5	32501	0	32501	0
GEELY	Icon	32385	0	32385	0
Lynk&Co	o1	32156	48435	32156	48435
Venucia	D60	31864	69021	31864	69021
Toyota	Levin	31685	0	31685	0
Hyundai	Tucson	31357	32966	245608	306955
Ford	Territory	31024	47893	31024	47893
Volkswagen	Tacqua	30908	2457	30908	2457
Lincoln	Corsair	30367	0	30367	0
Chery	QQ	29717	2686	29717	2686
BMW	1-series	29335	43705	137205	155773
Honda	UR-V	29260	27840	29260	27840
FAW	Besturn T77	29236	45908	29236	45908
Baojun	RM-5	29191	30562	29191	30562
Haval	Big Dog	28797	0	28797	0
BYD	Han	28773	0	28773	0
Wuling	Sunshine	28703	0	28703	0
Volkswagen	CC	28428	23807	28445	23865
MG	MG5	28184	11805	28184	11805
Kia	K3	27950	38520	27950	38520
NIO	ES6	27611	12074	27611	12074
Changan	Raeton CC	27503	21875	27503	21875
Roewe	I6	27362	31900	27362	31900

Audi	Q3	27251	14822	144292	121111
Hyundai	Verna Yuena	27156	37549	27156	37549
Baojun	RC-5	26766	0	26766	0
Skoda	Octavia	26696	66806	207598	285245
Dongfeng	Fengguang 560	26657	59417	26657	59417
Cadillac	XT6	26555	5795	49165	17355
Nissan	Kicks	26373	47785	85231	105978
Land Rover	Discovery	26320	26373	55428	66699
Cadillac	ATS/ATS-L	26020	57227	26136	58361
BEIJING	X3	25712	22876	25712	22876
Ford	Edge	25709	32815	138293	179945
JAC	J7	25470	8153	25470	8153
Ford	Mondeo	25027	17642	46249	57197
BMW	X2	24583	5590	64696	62009
MG	ZS	23983	17021	23983	17021
Dongfeng	AX7	23735	36918	23735	36918
SAIC	Maxus G50	23660	28446	23660	28446
BYD	Song	23410	68175	23410	68175
Baojun	310	23313	47154	23313	47154
Skoda	Karoq	23295	38026	105416	143067
Buick	Enclave	22824	5565	61303	56721
SWM	G05	22811	2126	22811	2126
Chevrolet	Sail	22795	90173	22795	90173
Wuling	Victory	22524	0	22524	0
BEIJING	X7	22267	0	22267	0
WM Motor	EX5-Z	22236	15587	22236	15587
Toyota	Vios	22135	26029	22135	26029
Haval	H9	22035	13434	22035	13434
FAW	Besturn X40	21953	38752	21953	38752
Cowin	Snowjet	21779	0	21779	0
Cadillac	CT6	21689	22637	24806	30589
Hyundai	Mistra	21649	42509	21649	42509
Volkswagen	Viloran	21506	0	21506	0
Ford	Explorer	21243	12976	249984	200037
Lynk&Co	o2	21113	23171	21113	23171
GEELY	Jiaji	21052	32961	21052	32961
BYD	Tang	21029	40945	21029	40945
Baojun	E200	21004	48278	21004	48278
GEELY	Tugella	20700	12230	20700	12230
Buick	Encore	20538	21381	64891	72581
Kia	Stonic/KX1	20315	35618	71813	99866
Venucia	Xing	20305	0	20305	0
Jeep	Compass	20201	35746	175481	244393
Kia	Forte	20094	10162	105091	105771
Kia	Rio/K2	19855	62650	76834	127332
Toyota	Avalon	19728	0	19728	0
BYD	E2	19616	7319	19616	7319
Wey	VV5	19545	21997	19545	21997

Toyota	Prado	19141	35401	19141	35401
Oushang	Changan CX70	19114	53885	19114	53885
GEELY	Xingrui	19094	0	19094	0
Dongfeng	Xuan	19016	18143	19016	18143
Jinbei	X30L	18978	0	18978	0
SAIC	Maxus G10	18949	24022	18949	24022
Kia	Pegas	18516	990	18516	990
Mazda	CX-30	18120		104985	15337
Changan	Alsvin	18091	10528	18091	10528
Kia	K5	18072	2121	49728	2121
Ford	Taurus	18071	6320	18071	6320
Jinbei	X30	17773	0	17773	0
MG	MG3	17713	22466	20260	26286
Skoda	Kodiatq	17693	40067	87209	128583
Buick	Encore	17582	0	59822	51200
SOL	X8	17396	0	17396	0
GEELY	Emgrand GT	17003	5930	17003	5930
Buick	Verano	16928	74183	16928	74183
Weichai	70	16878	3053	16878	3053
Volkswagen	Passat	16790	6004	16790	6004
Hyundai	Sonata 9	16726	2416	16726	2416
Infiniti	QX50	16716	23445	37601	42061
Cadillac	CT4	16616	0	21505	0
BYD	Qin	16599	8328	16599	8328
Changan	CS85 Coupe	16504	22676	16504	22676
Oushang	Chana Honor	16330	27295	16330	27295
Lynk&Co	o6	16112	0	16112	0
Mercedes-Benz	V-Class	16005	16262	40170	47604
Nissan	Lannia	15931	53089	15931	53089
Baojun	E100	15793	11772	15793	11772
JAC	Refine	15547	37566	15547	37566
BYD	Yuan	15537	61900	15537	61900
Buick	Velite 6	15186	3342	15186	3342
Suzuki	Alivio	15152	12855	15152	12855
Nissan	Murano	15057		73313	68361
BAIC New Energy	Senova	14742	110147	14742	110147
Changan	Eado	14682	32299	14682	32299
Dongfeng	Fengguang 330	14412	24013	14412	24013
BEIJING	BJ40	14230	20392	14230	20392
Nissan	Terra	14114	10900	14114	10900
BYD	Tang	13991	35796	13991	35796
Roewe	RX5	13991	0	13991	0
Roewe	RX5	13991	0	13991	0
Mercedes-Benz	Vito	13917	11918	31682	35354
Haval	H2	13790	37893	13790	37893
SWM	G01	13747	32064	13747	32064

Hongqi	FAW Hongqi H9	13539	0	13539	0
Dongfeng	Fengguang 500	13427	0	13427	0
Changan	Eado	13295	23148	13295	23148
FAW	Besturn T99	13092	3956	13092	3956
BYD	Qin	13085	17772	13085	17772
Haval	F5	12992	26893	12992	26893
GAC	Trumpchi GS5 Sport	12989	0	12989	0
JAC	Refine M3	12630	0	12630	0
Roewe	RX3	12395	39418	12395	39418
Buick	GL6	12341	26020	12341	26020
Jaguar	XE/XEL	12307	12149	17773	23678
Oushang	X70A	12088	0	12088	0
Tayron	X	12051	0	12051	0
GAC	Trumpchi GA8	11971	1771	11971	1771
Volkswagen	Tiguan	11870	11167	11870	11167
BYD	Han	11783	0	11783	0
Oushang	X5	11721	0	11721	0
Xpeng	G3	11691	16608	11691	16608
Roewe	Clever	11671	0	11671	0
Toyota	Camry	11578	0	11578	0
Volkswagen	Touran	11570	16420	58792	91847
BYD	Song	11568	12585	11568	12585
Dongfeng	DongFeng K07	11355	0	11355	0
Range					
Rover	Evoque	11324	7466	59065	66369
Chery	TXL	11272	15994	11272	15994
Haval	H4	11262	27341	11262	27341
Kia	KX5	11221	8988	11221	8988
GAC	Aion V	11173	0	11173	0
Venucia	T90	11108	10559	11108	10559
Hongqi	HS7	11035	3990	11035	3990
Hyundai	Santa Fe	10974	15561	119676	151896
Ford	Kuga	10905	8898	91082	170533
NIO	ES8	10903	8872	10903	8872
Volkswagen	Sportsvan	10836	428	34684	42541
Chevrolet	Orlando	10777	26533	10777	26533
Jeep	Cherokee	10654	17277	148745	213589
Chana	Star	10494	0	10494	0
Roewe	iMax 8	10356	0	10356	0
BYD	F3	10338	21390	10338	21390
Baojun	360	10226	62284	10226	62284
Mitsubishi	ASX/Outlander Sport	10137	19871	56955	76637
Volkswagen	Phideon	10085	14019	10085	14019
Audi	Q2	10084	1834	10084	1834
Wey	VV7	10006	0	10006	0
Changan	CS55	9964	0	9964	0
Chery	eQ1	9871	0	9871	0
Leapmotor	T03	9831	0	9831	0

Citroën	C5	9779	16088	79529	95620
Qoros	7	9772	0	9772	0
Changan	CS15	9754	20095	9754	20095
GEELY	Emgrand EV	9572	29949	9572	29949
Baojun	E300	9557	0	9557	0
Roewe	I6	9465	12930	9465	12930
Roewe	RX8	9457	10859	9457	10859
BEIJING	U5	9379	16636	9379	16636
Hongqi	FAW Hongqi H7	9366	12644	9366	12644
JAC	Jiayue X4	9354	0	9354	0
Baojun	RC-6	9039	15411	9039	15411
Xpeng	P7	9021	0	9021	0
Peugeot	4008	9003	19193	9003	19193
Infiniti	Q50/Q50L	8979	11590	25583	38140
Peugeot	408	8872	10299	8872	10299
Lincoln	Aviator	8818	0	31898	8324
Dongfeng	Xuan GS	8724	0	8724	0
GAC	Trumpchi GS8	8613	28096	8613	28096
Dongfeng	DFSK C37	8488	0	8488	0
SWM	X7	8417	14015	8417	14015
Venucia	T60	8342	16192	8342	16192
Skoda	Superb	8328	23737	68253	91225
Neta	U	8281	0	8281	0
Neta	N01	8158	10006	8158	10006
BYD	Song	8016	0	8016	0
GAC	Trumpchi GA6	7800	14950	7800	14950
Jinbei	Grace	7617	18059	7617	18059
Baojun	RS-5	7603	23878	7603	23878
GEELY	Jiaji PHEV	7574	0	7574	0
Mitsubishi	Eclipse	7569	26512	31660	73283
JAC	S5	7423	6073	7423	6073
MG	Pilot	7392	0	7392	0
Jeep	Grand Commander	7377	14293	7377	14293
Changan	Benni	7377	23	7377	23
Yema	Bo Jun	7173	16269	7173	16269
Chevrolet	Blazer	7144	0	101742	58116
Jinbei	Express	7058	0	7058	0
Chery	Exceed	6979	0	6979	0
Haval	H7	6918	12451	6918	12451
Toyota	Corolla	6892	2642	6892	2642
Toyota	iA5	6828	2043	6828	2043
Cowin	X3	6760	9848	6760	9848
Oushang	COS1°	6728	11543	6728	11543
Wey	VV7	6656	19678	6656	19678
ORA	White Cat	6651	0	6651	0
Venucia	D60	6608	4657	6608	4657
Honda	X-NV	6579	1507	6579	1507
Volkswagen	Tayron	6521	0	6521	0

Soueast	DX5	6274	5446	6274	5446
Borgward	BX5	6199	33215	6199	33215
Changan	CS95	6166	7498	6166	7498
Honda	Life	6113	0	6113	0
JAC	S7	6001	0	6001	0
Oushang	A600	5954	14724	5954	14724
Baojun	630	5952	4368	5952	4368
Foton	MPX E	5921	7710	5921	7710
Suzuki	Beidouxing	5730	8345	5730	8345
Oushang	5	5700	2438	5700	2438
GAC	Trumpchi GS5	5640	47054	5640	47054
Volkswagen	Magotan	5617	0	5617	0
Jaguar	XF/XFL	5595	4931	8794	12053
SWM	X3	5384	5081	5384	5081
NIO	EC6	5367	0	5367	0
Volkswagen	Bora	5341	1140	5341	1140
Geometry	C	5277	0	5277	0
BAIC New					
Energy	EC Series	5207	27354	5207	27354
Chery	Bonus 3	5177	12264	5177	12264
Dongfeng	Fengguang ix5	5132	16213	5132	16213
Volkswagen	Golf	5083	669	39480	47463
Peugeot	508	4994	5008	34005	46337
JAC	S4	4875	22375	4875	22375
Citroën	C-Elysee	4832	20577	7612	26952
JAC	S2	4803	10121	4803	10121
Dorcen	G60	4770	29645	4770	29645
Dongfeng	Fengshen E70	4750	14972	4750	14972
GEELY	Xingyue PHEV	4639	11714	4639	11714
Chevrolet	Tracker	4442	14116	4442	14116
Toyota	Ralink	4322	2017	4322	2017
GEELY	Borui GE	4305	17696	4305	17696
Qoros	5 SUV	4285	13079	4285	13079
FAW	Besturn T33	4129	4999	4129	4999
Soueast	DX3	4047	11382	4047	11382
Nissan	Sylphy	4045	8109	4045	8109
Hongqi	E-HS3	4019	8339	4019	8339
BYD	Song	3990	0	3990	0
BYD	Qin	3990	30586	3990	30586
Volkswagen	C-Trek	3988	11521	3988	11521
Peugeot	5008	3950	9372	58418	85476
Chery	Tiggo 5	3893	3354	3893	3354
Changan	Benben EV	3889	2311	3889	2311
Denza	X	3881	0	3881	0
Mercedes-Benz	EQC	3863	0	18508	1432
Haval	H1	3757	2634	3757	2634
Chevrolet	TrailBlazer	3673	5460	40962	5460
Changhe	Freedom M50	3577	7666	3577	7666

JAC	Refine M4	3439	0	3439	0
Baojun	RC-5	3405	0	3405	0
Yema	Spica	3191	2201	3191	2201
Kylark	Q1	3176	4614	3176	4614
BEIJING	BJ80	3155	568	3155	568
Buick	Excelle	3133	9150	3133	9150
Wuling	Rongguang	3124	0	3124	0
Dongfeng	Fengguang ix7	3119	1258	3119	1258
Neta	V	3033	0	3033	0
Jetour	X95	2973	2003	2973	2003
Citroën	C3	2904	5383	2904	5383
Haval	H5	2890	2822	2890	2822
JMC	EV3	2855	5338	2855	5338
Roewe	R ER6	2820	0	2820	0
BYD	E3	2820	1649	2820	1649
Oushang	Cosmos	2774	3989	2774	3989
GAC	Aion LX	2745	1341	2745	1341
Ford	Ecosport	2670	2924	110762	183899
BEIJING	U7	2639	7449	2639	7449
Brilliance	V3	2621	17960	2621	17960
Aiways	U5	2600	0	3030	0
FAW	Besturn B30	2538	11843	2538	11843
GEELY	Emgrand GSe	2530	10806	2530	10806
Dongfeng	LingZhi	2525	768	2525	768
Volkswagen	Lavida	2507	6895	2507	6895
Jeep	Renegade	2477	5640	124299	161368
Buick	Excelle	2453	8362	2453	8362
Chery	Arrizo 5e	2401	3597	2401	3597
Borgward	BX7	2389	11708	2389	11708
Everus	EV-1	2380	1555	2380	1555
Brilliance	H330	2352	124	2352	124
GAC	Trumpchi GA4	2341	9308	2341	9308
Maple	30X EV	2322	0	2322	0
SOL	A5	2321	0	2321	0
Ford	Everest	2285	2483	2285	2483
Jaguar	E-Pace	2249	2328	20792	34800
Toyota	C-HR/IZOA	2196	0	2196	0
Dongfeng	EC36	2192	0	2192	0
BEIJING	X5	2090	7916	2090	7916
Soueast	DX7	2081	4793	2081	4793
Soueast	A5	2046	7371	2046	7371
ORA	Good Cat	2016	0	2016	0
JAC	S3	1987	14422	1987	14422
BYD	Song	1982	68175	1982	68175
SAIC	Maxus D90	1981	2996	1981	2996
Cowin	X5	1970	8490	1970	8490
Toyota	Crown	1927	10378	1927	10378
Dongfeng	E1	1878	0	1878	0

Oushang	A800	1862	8251	1862	8251
JAC	iEV6	1830	18379	1830	18379
BAIC	BJ212	1811	2738	1811	2738
Venucia	T70	1796	14637	1796	14637
BYD	E1	1771	7470	1771	7470
SAIC	Maxus EUNIQ 5	1756	213	1756	213
FAW	Besturn B70	1745	0	1745	0
Zotye	T700	1695	18991	1695	18991
GEELY	Binyue PHEV	1689	1203	1689	1203
Dongfeng	Fengguang 370	1618	1561	1618	1561
SAIC	Maxus D60	1613	4643	1613	4643
FAW	Besturn B30	1592	6809	1592	6809
JAC	J4 (A30)	1584	0	1584	0
Chevrolet	Menlo	1578	0	1578	0
Citroën	C6	1573	2431	1573	2431
Changhe	A6	1499	6743	1499	6743
Chery	Fulwin 2	1440	1185	1440	1185
BAIC	Warrior	1407	2077	1407	2077
Dongfeng	S50	1402	5234	1402	5234
Chery	Ant EV	1304	0	1304	0
Jinbei	Guanjing	1277	2479	1277	2479
Dongfeng	Junfeng CV03	1255	0	1255	0
Peugeot	2008	1244	838	157382	165789
Chery	eQ	1221	39401	1221	39401
BYD	D1	1201	0	1201	0
JAC	iEVA50	1201	2859	1201	2859
Roewe	RX5	1200	9416	1200	9416
Haima	7X	1118	0	1118	0
FAW	Besturn E01	1085	0	1085	0
Hyundai	Kona	1071	4196	204304	182552
Chana	S50	1061	0	1061	0
JAC	iC5	1053	0	1053	0
Levdeo	i9	1035	0	1035	0
Changan	Alsvin V3	1005	5156	1005	5156
MG	MG6	995	2413	995	2413
Changhe	Q35	980	4447	980	4447
Zotye	T600	964	19726	964	19726
GAC	Trumpchi GS7	939	6184	939	6184
Karry	K60	908	5606	908	5606
BAIC New					
Energy	EX Series	876	12500	876	12500
Buick	Velite 7	875	0	875	0
BMW	X3	857	0	857	0
Lingbao	Box	851	0	851	0
ORA	iQ5	820	10367	820	10367
Kia	KX7	800	29	800	29
Seres	SF5	791	0	791	0
JAC	iEVS4	776	4675	776	4675

Kia	K3	769	307	769	307
Lynk&Co	o1	757	3291	757	3291
JMC	S350	749	0	749	0
MG	Pilot	749	0	749	0
Leapmotor	S01	709	0	709	0
Zotye	T300	685	44807	685	44807
Dongfeng	A60	675	1815	675	1815
Mazda	CX-8	672	1476	672	1476
Brilliance	FRV	672	0	672	0
FAW	V80	622	0	622	0
Hyundai	Celesta	612	230	612	230
GAC	Trumpchi GE3	590	7003	590	7003
Oushang	A600	581	0	581	0
Lynk&Co	o6	580	0	580	0
Renault	Koleos	578	8445	7494	20816
Soueast	DX3	577	1534	577	1534
Brilliance	FSV	564	144	564	144
BYD	Tang	563	0	563	0
Roewe	Marvel X	557	2185	557	2185
Changhe	Q7	549	5786	549	5786
Kia	K4	547	5247	547	5247
Qoros	3 Sedan	547	9860	547	9860
Honda	M-NV	540	0	540	0
Nissan	Murano	519	0	519	0
Hycan	OO7	508	0	508	0
Dongfeng	ES500	506	1200	506	1200
BAIC	BJ20	504	1675	504	1675
GAC	GS4 PHEV	501	1796	501	1796
Citroën	C3	484	0	484	0
Renault	Captur	481	701	179205	223241
BEIJING	Senova X25	458	314	458	314
Chery	Tiggo E	447	1953	447	1953
Dongfeng	Joyear S50	432	2210	432	2210
Lynk&Co	o2	428	372	428	372
Kia	K5	427	1868	427	1868
Brilliance	V7	422	5648	422	5648
JMC	EX5	417	1045	417	1045
Kia	K4	411	0	411	0
FAW	Besturn X40	395	252	395	252
Lynk&Co	o3	387	215	387	215
DS	DS7	376	834	24463	28774
Peugeot	308	370	11549	90694	152609
Changan	CS15	361	2677	361	2677
Karry	K60	335	68	335	68
Dongfeng	E3	322	0	322	0
JAC	iEV7S	322	4056	322	4056
Yema	Spica EV	318	0	318	0
Venucia	E30	311	154	311	154

Maple	80V	298	0	298	0
Denza	X	294	0	294	0
Karry	K50	293	4543	293	4543
Dongfeng	AX5	291	1162	291	1162
FAW	Besturn X80	288	37	288	37
Yema	T80	287	1665	287	1665
Kia	KX	285	19978	285	19978
Oushang	X7	270	0	270	0
Jinbei	750	269	1909	269	1909
BEIJING	Senova D20	264	0	264	0
JAC	iEV4	256	0	256	0
Lifan	Myway	253	3741	253	3741
Lifan	X70	252	679	252	679
Wuling	730	249	0	249	0
Suzuki	S-Cross	210	1468	20986	37622
Changfeng	Mattu	204	9257	204	9257
GAC	Eupheme EV	195	804	195	804
Jinbei	F50	194	2206	194	2206
Renault	Eno	187	2889	187	2889
JAC	Refine S7	182	1686	182	1686
Renault	Kadjar	181	5984	63866	115997
SAIC	Maxus EG10	178	218	178	218
Sitech	DEV1	176	2914	176	2914
Dongfeng	AX4	147	1805	147	1805
Venucia	T60	139	102	139	102
Changfeng	Leopard CS9	127	15750	127	15750
Roewe	950	113	1264	113	1264
Zotye	E200	110	1609	110	1609
Suzuki	Vitara	103	3309	43830	85169
BYD	E5	103	29311	103	29311
Peugeot	4008	99	0	99	0
Dongfeng	Succe	92	0	92	0
Mercedes-Benz	GLA	89	39273	81348	131395
Baojun	RS-7	79	0	79	0
JAC	Refine M6	76	0	76	0
BEIJING	X7	67	0	67	0
Lifan	Xuanlang	67	3050	67	3050
Zotye	T500	56	16187	56	16187
JAC	Refine M5	54	0	54	0
Lifan	Solano II	53	387	53	387
JAC	iEV7	42	3950	42	3950
Peugeot	2008	37	0	37	0
Dongfeng	Succe	37	986	37	986
MG	GS	34	3007	34	3007
Dongfeng	Xuan	20	0	20	0
SAIC	Maxus EUNIQ 6	20	0	20	0
Soueast	V5	19	140	19	140

Peugeot	508	17	0	17	0
MG	GT	15	6252	15	6252
BMW	2-series	11	3680	30493	59554
Peugeot	301	11	4845	611	6251
Volkswagen	Jetta	10	105163	82691	205700
Nissan	Maxima	8	4	18070	35080
Lifan	Murman	7	573	7	573
GAC	Trumpchi GA5	5	406	5	406
Lifan	820 EV	5	1685	5	1685
Venucia	M50V	5	2132	5	2132
Lifan	650 EV	4	1234	4	1234
Lifan	X80	4	1164	4	1164
Honda	City	2	33029	2	33029
FAW	Xenia R8	2	62	2	62
Lifan	Smily	2	4	2	4
Cadillac	XTS	1	42234	1201	53540
Lincoln	MKX/Nautilus	1	14013	22744	45623
Kia	KX3	1	194	1	194

Source: (Chinamobil, 2020)