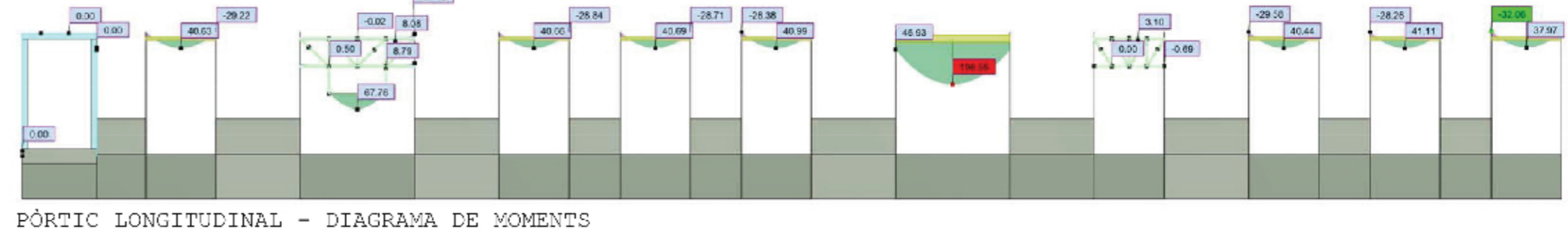
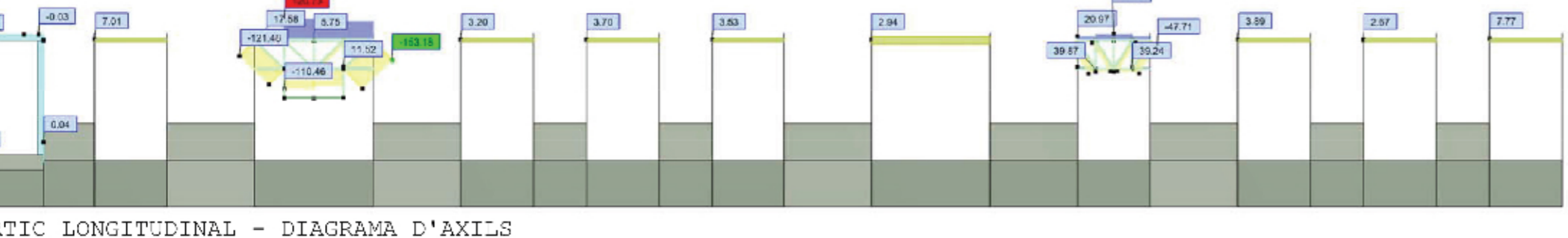
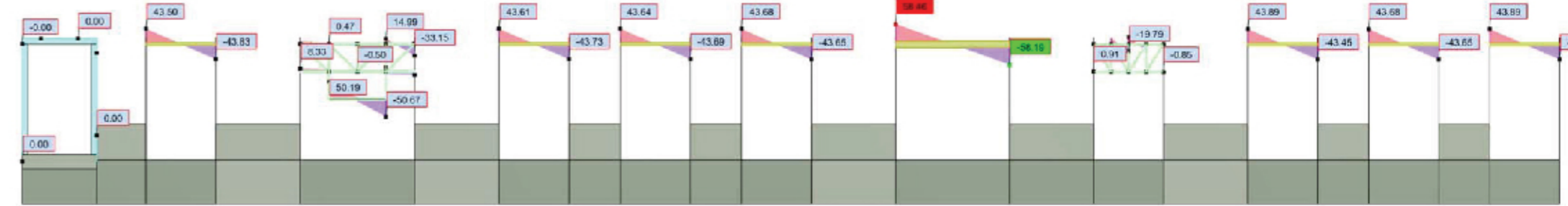
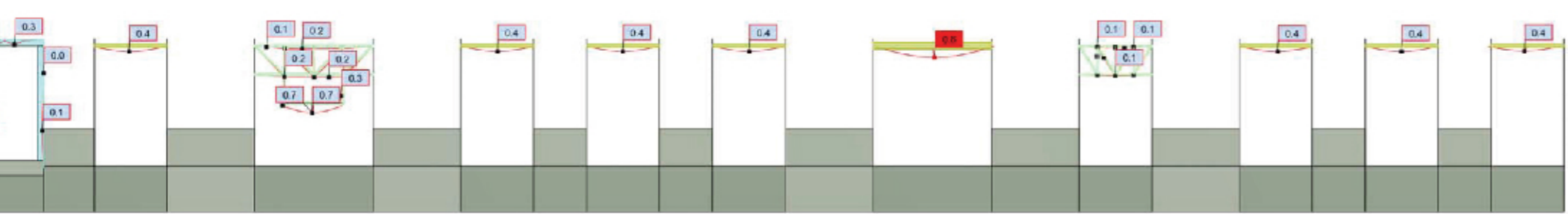
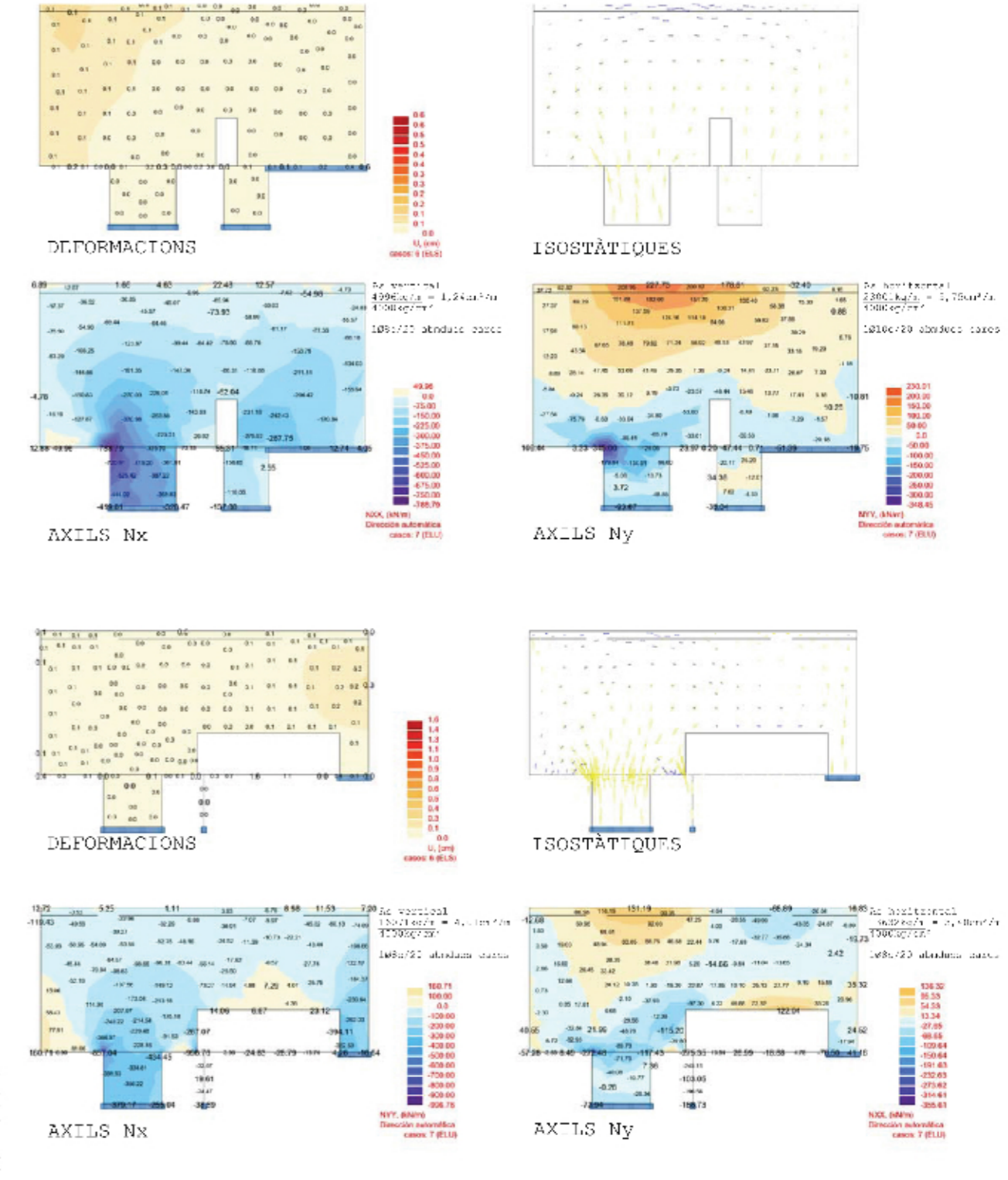
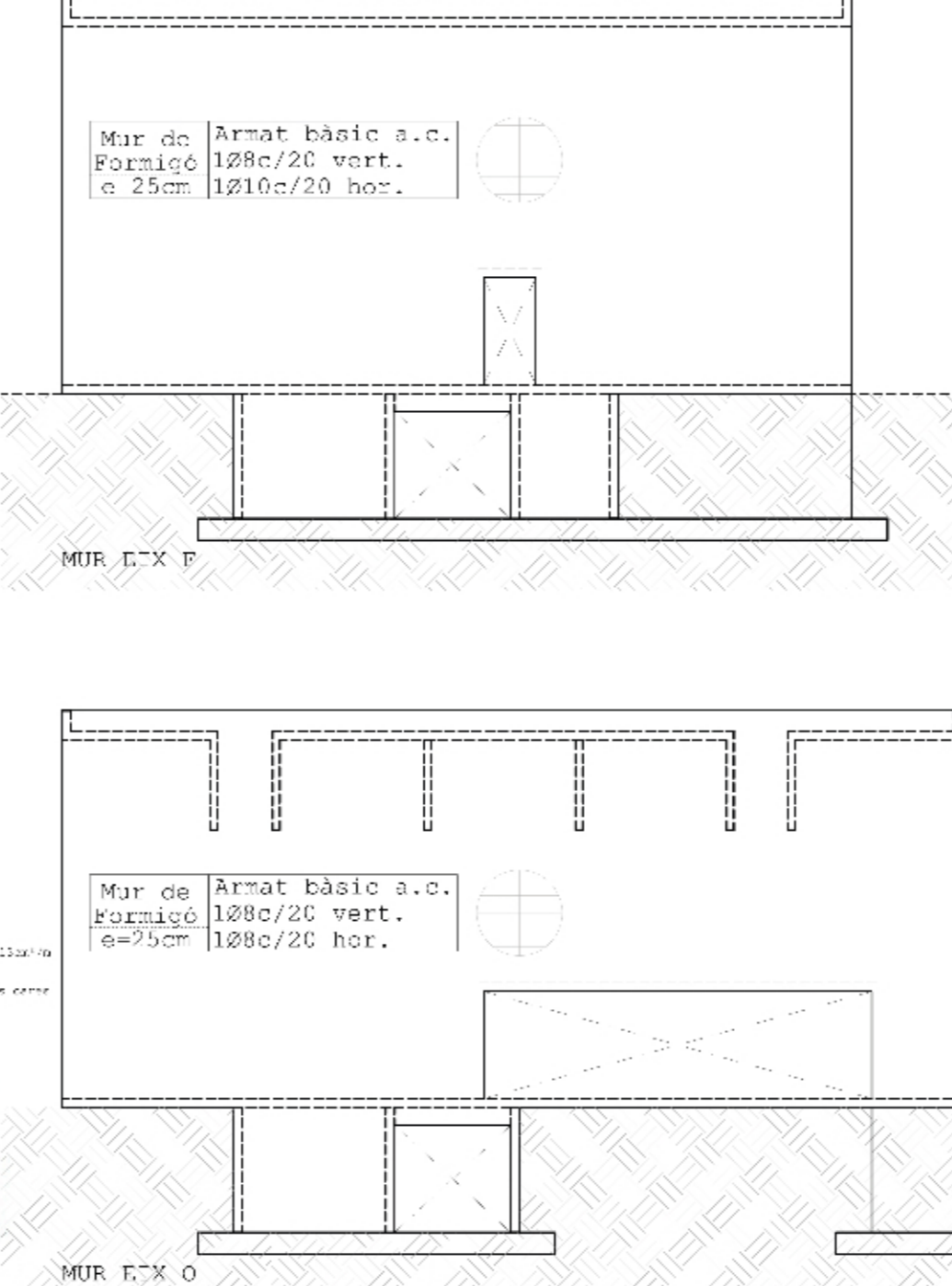
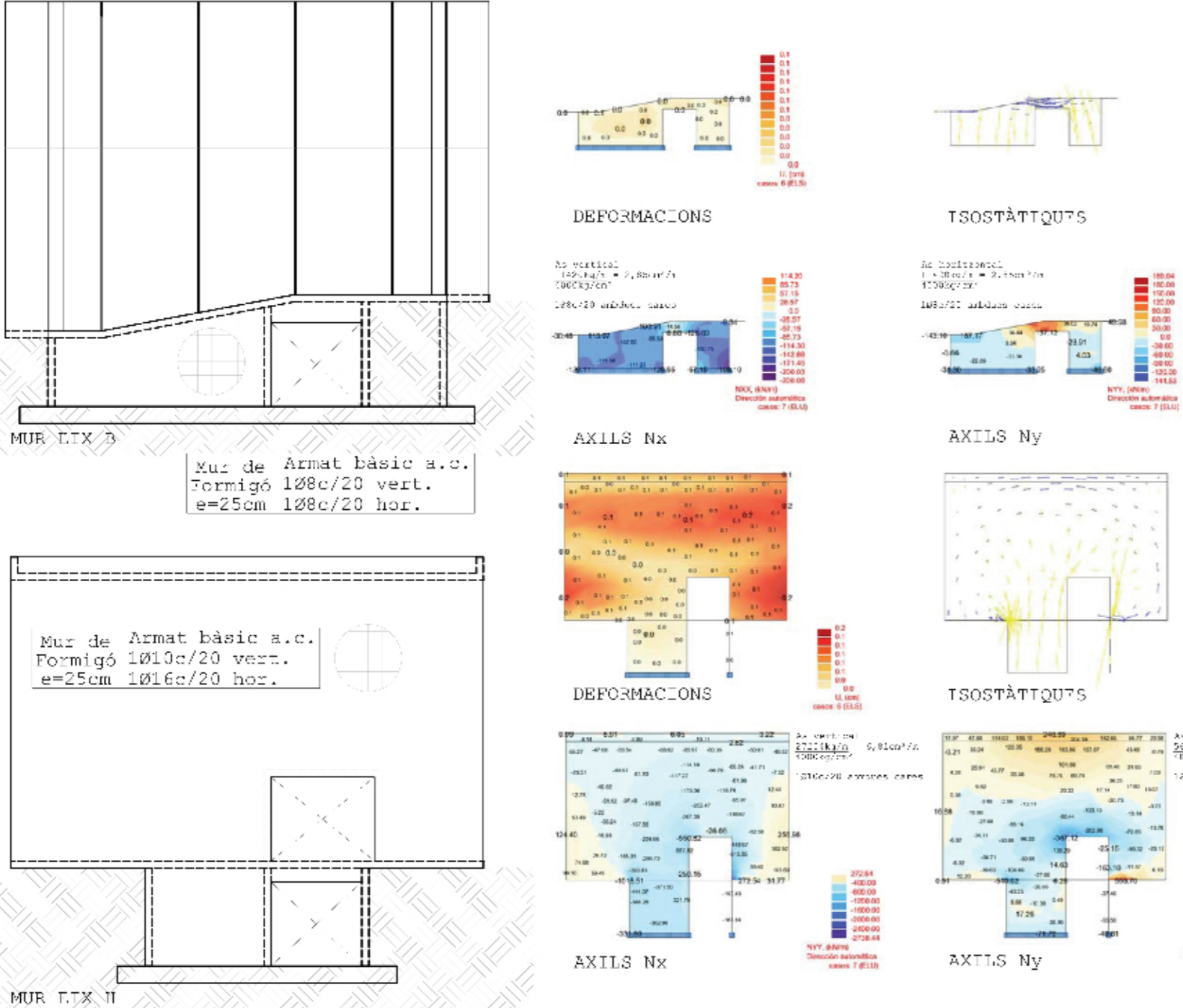


PÒRTIC LONGITUDINAL - ESQUEMA ESTRUCTURAL



PREDIMENSIONAT DE CANTELL DE FORJAT

- Busquem la inèrcia del forjat o jàssera corresponent
 $I = b \times h^3 / 12$ En el sandwich buscar per Steiner
- Calculem la càrrega lineal per la secció de forjat
 $q = Q \times \text{intereix}$
- Comprovem la flexió màxima del forjat biarticulat
 $F = 5/385 \cdot qL^4/EI < L/1000$ elements armats
 $< L/400$ elements metàl·lics
 $< L/200$ elements de vidre
- Calculem Moment flector últim isostàtic
 $M_d = qL^2/8$

