

Application of Modified Current-Mode One-Cycle Control in a Linear-Assisted DC/DC Regulator

Herminio Martínez-García

Barcelona College of Industrial Engineering (EUETIB)
Department of Electronics Engineering
Technical University of Catalonia–BarcelonaTech (UPC)
c/ Comte de Urgell, 187, 08036, Barcelona (Spain)
herminio.martinez@upc.edu

Abstract— Linear-assisted DC/DC converters are structures that allow to take advantages of the two classic alternatives in the design of power supply systems: Voltage linear regulators (classic NPN topology or LDO –low dropout–) and switching DC/DC converters. This paper shows the proposal of a modified current-mode one-cycle control for linear-assisted DC/DC converters. The modified current-mode one-cycle control technique is proposed in order to obtain the duty cycle of the linear-assisted converter switch. The proposed structure can provide an output with suitable load and line regulations. The paper shows the design of the proposed modified current-mode one-cycle linear-assisted regulator and simulation results that validate the aforementioned proposal.

Keywords—Modified one-cycle control; DC-DC voltage regulators; linear-assisted DC-DC voltage regulators

I. INTRODUCTION

The Linear-assisted DC/DC regulators (also known as linear-switching hybrid converters) are circuitual structures that present an increasing interest for the implementation of power supply systems that require two demanding design specifications: (1) high slew-rate of the output current and (2) high current consumption by the output load [1], [2]. These linear-switching hybrid regulators are able to combine the well-known advantages of the two existing typical alternatives for the implementation of DC/DC voltage regulators or converters, diminishing as well their disadvantages. These two alternatives are known largely: (1) the use of voltage series linear regulators (classic standard NPN –or nMOS– topologies and LDO) have been widely used for some decades [3]-[5], and (2) DC/DC switching converters, thanks to which high current power supply systems can be obtained [6]-[8]. Linear-assisted DC/DC regulators can be implemented on printed circuits using discrete components. Nevertheless, they are also an attractive alternative susceptible to be integrated in on-chip power supply systems as a part of power management systems.

An important part of these converters is their controller. Some alternatives are present [9]-[12]; however, a modification of the nonlinear control technique known as one-cycle control [13], [14] is proposed in current article. One-cycle control takes advantage of the pulsed and nonlinear nature of switching converters and achieves instantaneous dynamic control of the average value of a switched variable; more specifically, it takes

only one switching cycle for the average value of the switched variable to reach a new steady state after a transient.

There is no steady-state error or dynamic error between the control reference and the average value of the switched variable. This technique provides fast dynamic response, excellent power source disturbance rejection, robust performance, and automatic switching error correction.

Though one-cycle control has so many advantages, it is infirmness for load disturbance. However, the inclusion in the linear-assisted converter of a voltage linear regulator provides the suitable load regulation thanks to a second loop included in the linear regulator block.

II. BASIC TOPOLOGY OF A LINEAR-ASSISTED DC/DC CONVERTER

The basic scheme of a single output linear-assisted regulator is shown in Fig. 1 [11], [12]. Mainly, this structure consists of a voltage linear regulator *in parallel* with a step-down switching DC/DC converter. In this type of converters, the value of the output voltage, supposed constant, is fixed with good precision by the voltage linear regulator. The current flowing through this linear regulator is constantly sensed by the current sense element R_m . Based on its value, the controller activates or not the output of comparator CMP_1 that, as well, leads to the switch element of the DC/DC switching converter. Therefore, notice that the current through the linear regulator constitutes *a measurement of the error* of the power supply system.

The power stage (that is, the switching converter) injects in the output the necessary current to force to a minimum value (not necessarily zero) the current flowing through the linear regulator. As a consequence, it is obtained, altogether, a power supply system where the switching frequency comes fixed, among other parameters (such as the possible hysteresis of the analog comparator), by the value of the current through the linear regulator. On the other hand, the output voltage value is fixed by the voltage linear regulator.

In the linear-assisted converter in Fig. 1, in which the switching converter is a step-down type [11], [12], the linear regulator consists of a push-pull output stage (transistors Q_{2a} and Q_{2b}). In this strategy, the main objective of the DC/DC switching converter is to provide *almost all* the load current in

steady-state conditions (to obtain a good efficiency of the whole system). Thus, in steady state, the linear regulator provides a little part of the load current, maintaining the output voltage to an acceptable constant value.

As a matter of fact, if the current demanded by the load I_{out} is inferior to a maximum value of current, which we will denominate **switching threshold current**, I_γ , the output of comparator CMP_1 will be at low level, disabling the DC/DC switching converter and, thus, the current flowing through inductor L_1 will be zero (Fig. 2). Therefore, the voltage linear regulator supplies the load R_L , providing all the output current ($I_{reg}=I_{out}$). However, when the current demanded by the load overpasses this current limit I_γ , automatically the output of the comparator will pass to high level, causing that the current through the inductance L_1 grows linearly approximately according to:

$$i_L(t) = \frac{V_{in} - V_{out}}{L_1} t + I_L(\tau_1) \quad (1)$$

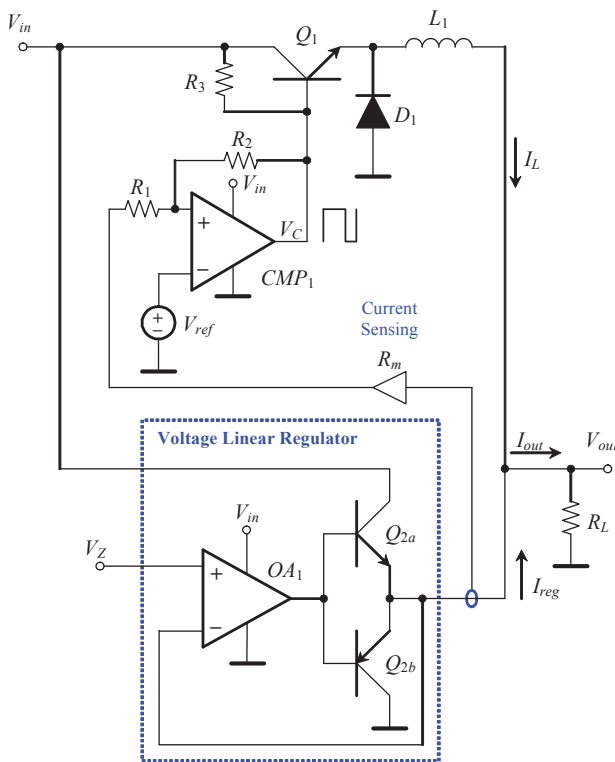


Fig. 1. Basic structure of the proposed linear-assisted DC/DC converter.

In this expression, the conduction collector-emitter voltage of transistor Q_1 is ignored. $I_L(\tau_1)$ is the initial value of the current through inductor L_1 at the time instant in which L_1 starts conduction (T_{ON}). Considering that the output current $I_{out}=I_{reg}+I_L$, and is assumed to be constant (equal to V_{out}/R_L), the linear regulator current I_{reg} will decrease linearly, until becoming slightly smaller than I_γ . At this moment, the comparator will change its output to low level, cutting the

transistor Q_1 and causing that the current through the inductor decreases according to equation (2):

$$i_L(t) = -\frac{V_{out}}{L_1} t + I_L(\tau_2) \quad (2)$$

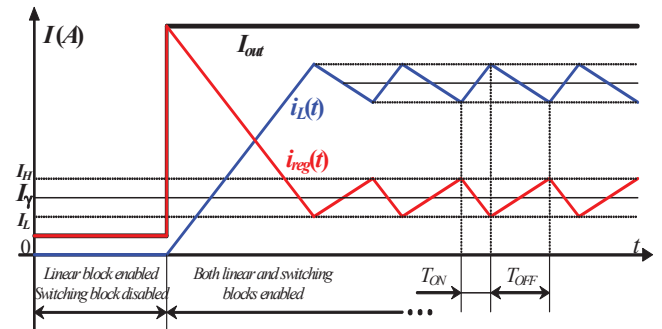


Fig. 2. Operation principle of the proposed linear-assisted DC/DC regulator.

In this expression it is considered that the diode D_1 is ideal (with zero direct voltage). $I_L(\tau_2)$ is the maximum value reached by the current flowing through the inductor (just at the beginning of the interval T_{OFF}). When the inductor current decreases to a value in which $I_{reg}>I_\gamma$, the comparator changes its state to high level, repeating the cycle again.

Without hysteresis in the comparator, the switching point of the DC/DC switching converter is given by the **switching threshold current**, I_γ , of the linear regulator. This one can be adjusted to a value thanks to the gain of the current sensing element, R_m , and the reference voltage V_{ref} , according to the expression:

$$I_\gamma = \frac{V_{ref}}{R_m} \quad (3)$$

In case of a comparator without hysteresis, intrinsic delays of the electronic circuits determine a small hysteresis that limits the maximum value of the linear-assisted converter switching frequency. However, with the objective of fixing this switching frequency to a practical value (in order not to increase significantly losses by the switching process), it is important to add the aforementioned hysteresis to the comparator CMP_1 (thanks to R_1 and R_2 in Fig. 1).

III. REVIEW OF ONE-CYCLE CONTROL CONCEPT

One cycle control was proposed by Keyue M. Smedley in 1991 and realized initially in buck PWM converter [13]-[15]. DC/DC switching converters with one-cycle control reject input perturbations in only one switching cycle and follow the control reference instantly. It is said that one-cycle control is universal and can be applied directly to switching converters in either PWM or quasi resonant modes [15], [16]. From then on, with one-cycle control, boost converter, Cúk converter, three-phase PFC converter and three-phase boost rectifier have been presented. During this period, a general-purpose feed-forward one cycle controller was also advanced. One-cycle control theory is shown in Fig. 3.a.

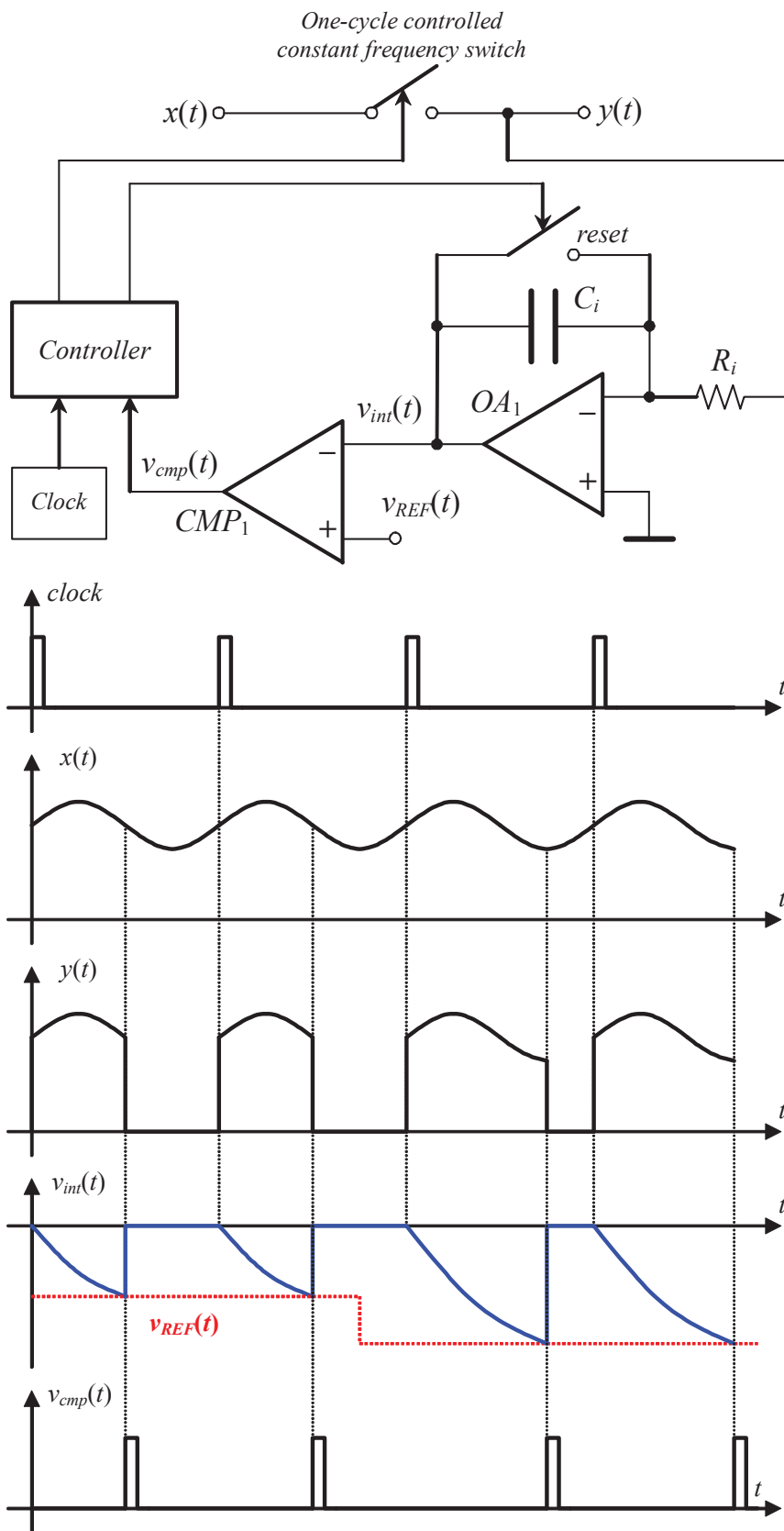


Fig. 3. (a) Basic scheme of one-cycle control. (b) Typical waveforms of one-cycle control.

With one-cycle control, the effective output signal of the switch (i.e., the average value of the switched variable) is:

$$\tilde{y}(t) = v_{REF}(t) \quad (4)$$

The key component of one-cycle control technique is the integrator and the resetter. When the integration value reaches the control reference, the controller sends a command to the switch to change it from the on state to the off state. The duty-ratio of the present cycle is determined by the following equation:

$$k \int_o^{dT_s} x(t) dt = v_{REF}(t) \quad (5)$$

The average value of the switched variable at the switch output is guaranteed to be:

$$\tilde{y}(t) = \frac{1}{T_S} \int_o^{dT_S} x(t) dt = \frac{1}{kT_S} v_{REF}(t), \quad (6)$$

in each cycle. Fig. 3.b shows the operating waveforms of the circuit when $v_{REF}(t)$ is constant. According to the one-cycle control the adjusting is completed in one switching cycle to reject the power source disturbance. So it is excellent to power source disturbance rejection. However, although one-cycle control is excellent for rejection the power source disturbance, it is infirmness for load disturbance. The paper proposes a new control technique, improved one-cycle control technique that can overcome this shortcoming.

IV. TOPOLOGY OF THE MODIFIED CURRENT-MODE ONE-CYCLE LINEAR-ASSISTED DC/DC CONVERTER

Based on the linear-assisted DC/DC converter, the structure of the proposed linear-assisted DC/DC converter with modified current-mode one-cycle control strategy is shown in Fig. 4. In this figure we can observe the linear regulator, the switching DC/DC converter and the control loop that fixes the duty cycle of the switch element Q_1 . Comparing Fig. 4 and 3.a, the basic idea of the proposed control is to achieve an average inductor current during the time interval T_{ON} equal to the output current. Thus, having into account that:

$$i_L(t) + i_{reg}(t) = I_{out}, \quad (7)$$

the average value provided by the linear regulator block will tend to be zero. In addition, notice that the main difference with one-cycle control is that the linear regulator fixes the output voltage. In fact, the output voltage is given (and fixed) by the linear regulator. Therefore, according to before detailed, the new proposed technique can reject not only power disturbances, but load disturbances too. The main idea of the proposed control is to achieve that the average value of the current flowing across the inductor during the time interval T_{ON} ($=\tilde{d}(t)T_S$) equals to the average value of the current through the load during this interval. Therefore, considering that the output current is given by $I_{out}=I_{reg}+I_L$, the average current flowing through the linear regulator will tend to zero. On the one hand, the low-pass filter extract the average value of the duty cycle, $\tilde{d}(t)$, that multiplied by the output current I_{out} (considered constant), provides a measure of the average value of the current flowing through the load during the interval T_{ON} .

Thus, considering the gain factor of the current sensing element $R_m=1$, we have:

$$v_{mult}(t) = \tilde{d}(t)I_{out} \quad (8)$$

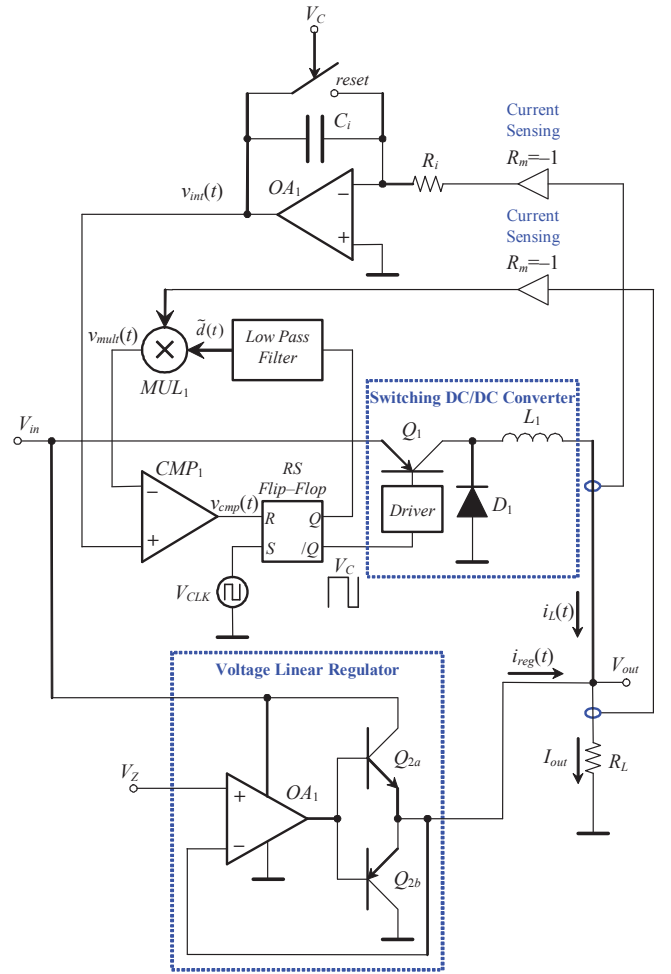


Fig. 4. Basic structure of a modified current-mode one-cycle linear-assisted DC/DC converter.

On the other hand, the analog integrator provides the measure of the average value of the current flowing across the inductor during the time interval T_{ON} , considering that the time constant is given by:

$$R_i C_i = T_S \quad (9)$$

Therefore:

$$v_{int}(t) = \frac{1}{R_i C_i} \int_o^t i_L(t) dt = \frac{1}{T_S} \int_o^t i_L(t) dt, \quad (10)$$

where the gain factor of the current sensing element $R_m=-1$ (the negative sign compensates the additional inversion provided by the integrator). The average value of the switched variable at the switch output is guaranteed to be:

$$\frac{1}{T_s} \int_0^{dT_s} i_L(t) dt = \tilde{d}(t) I_{out} \quad (11)$$

in each cycle. Fig. 5 shows the operating waveforms of the circuit when $v_{REF}(t)$ is constant.

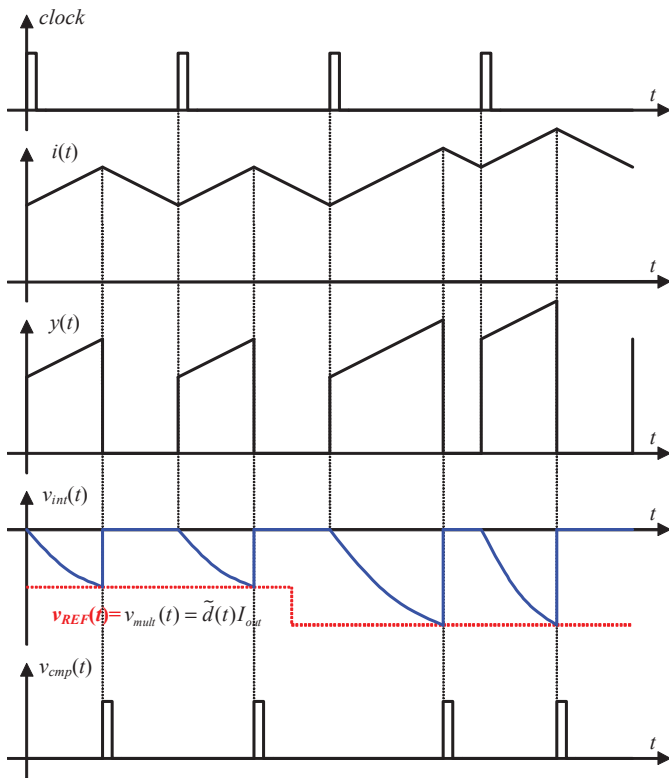


Fig. 5. Typical waveforms of the proposed linear-assisted converter with modified current-mode one-cycle control.

V. SIMULATION RESULTS

In order to validate the presented structure of the modified current-mode one-cycle linear-assisted DC-DC converter in Fig. 4, simulation results have been obtained from a system that provides 5.0 V at the output V_{out} . The value of the inductor is $L=100\ \mu\text{H}$. Fig. 6 shows the transient response of the linear-assisted DC/DC converter to a step when the reference voltage increases from 5 V to 8 V at $500\ \mu\text{s}$.

Finally, in order to corroborate the suitable line regulation of the proposed structure, Fig. 7 shows the transient response when the input voltage has an increasing step from 12 V to 17 V (variation of 41.7%) at $t=350\ \mu\text{s}$ and vice versa at $t=700\ \mu\text{s}$.

VI. CONCLUSIONS

In the presented paper, the design and simulation of a modified current-mode one-cycle control linear-assisted DC/DC converter has been carried out. The article has shown that linear-assisted DC/DC converters are suitable structures that allow to take advantages of the two classic alternatives in the design of power supply systems (voltage linear regulators and switching DC/DC converters). In addition, starting from this linear-assisted topology, and thanks to the general idea of one-cycle control, a modified current-mode one cycle linear-assisted DC/DC converter has been proposed. As a whole, the proposed DC/DC converter provides a good line regulation, thanks to the excellent power source disturbance rejection shown by the one-cycle control loop, a suitable load regulation thanks to the excellent load disturbance shown by the linear regulator and, finally, high efficiency shown by the switching converter.

ACKNOWLEDGMENT (Heading 5)

This work has been partially supported by the Spanish Ministerio de Economía y Competitividad by Projects DPI2013-42458-P, and DPI2013-47799-C2-2-R.

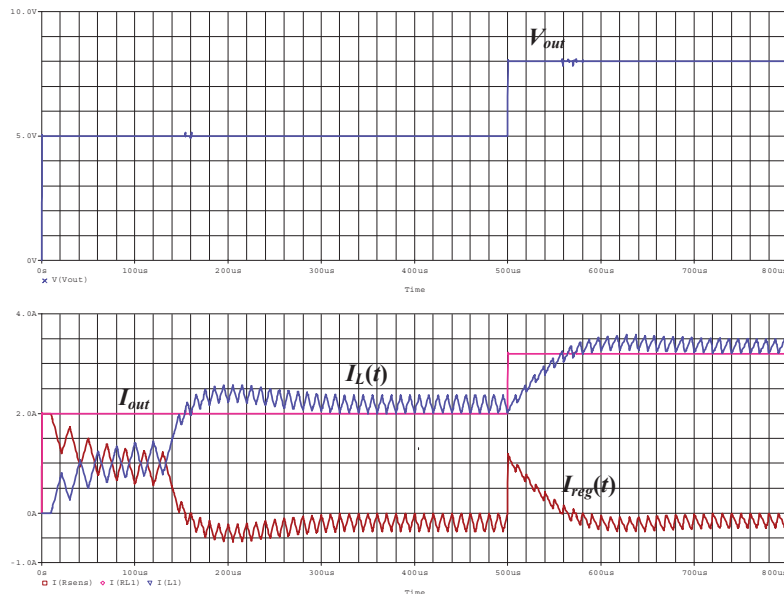


Fig. 6. Transient response of the linear-assisted DC/DC converter to a step when the reference voltage increases from 5 V to 8 V at $500\ \mu\text{s}$.

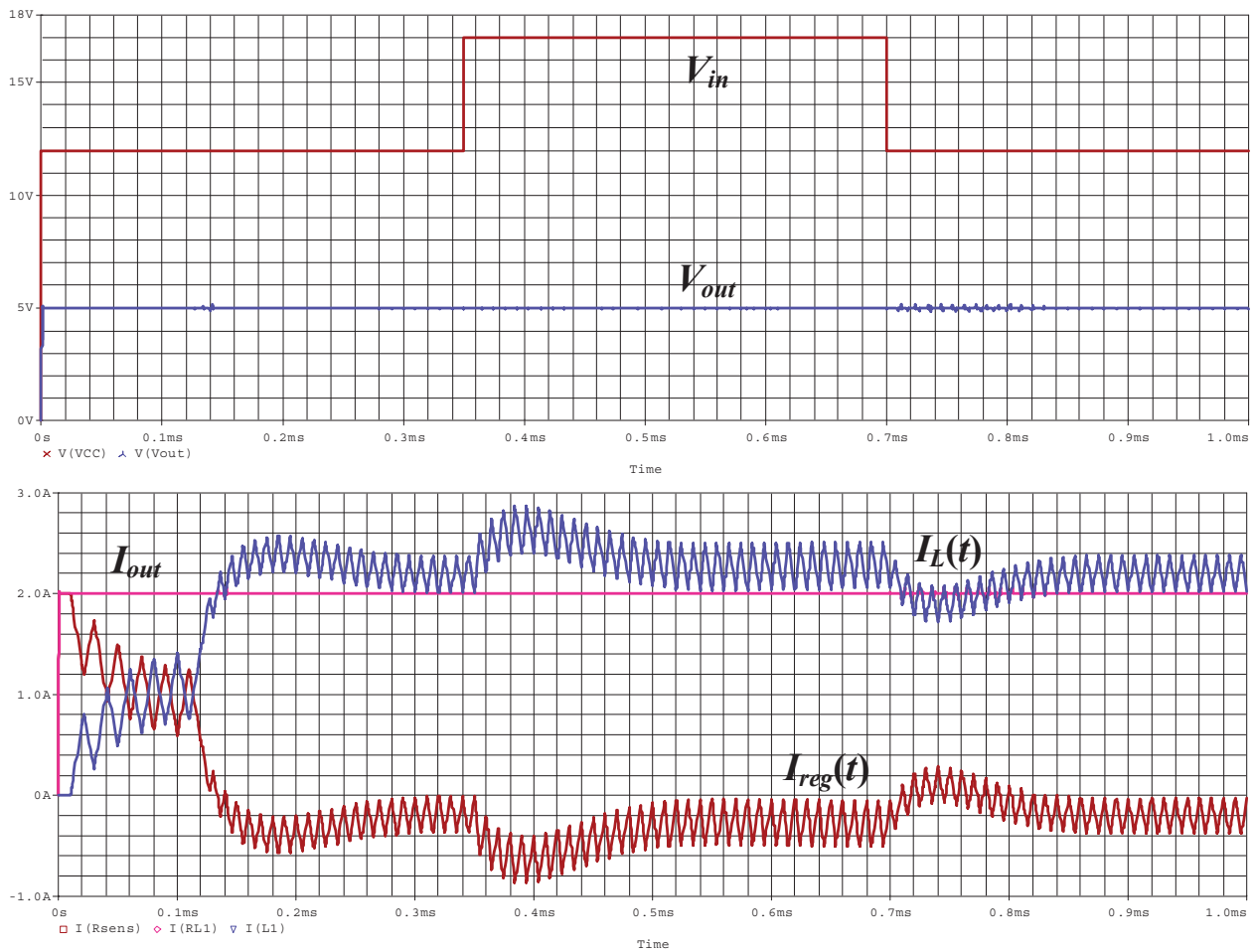


Fig. 7. Transient response when the input voltage has an increasing step from 12 V to 17 V (variation of 41.7%) at $t=350\mu\text{s}$ and vice versa at $t=700\mu\text{s}$.

REFERENCES

- [1] X. Zhou, P. L. Wong, P. Xu, F. C. Lee, A. Q. Huang. "Investigation of Candidate VRM Topologies for Future Microprocessors". *IEEE Transactions on Power Electronics*, vol. 15 (n° 6): pp. 1172–1182, November (2000).
- [2] B. Arbetter, D. Maksimovic. "DC–DC Converter with Fast Transient Response and High Efficiency for Low–Voltage Microprocessor Loads". *IEEE Applied Power Electronics Conference*, pp. 156–162. (1998).
- [3] C. K. Chava, J. Silva-Martínez. "A Frequency Compensation Scheme for LDO Voltage Regulators". *IEEE Transactions on Circuits and Systems–I: Regular Papers*, vol. 51 (n° 6): pp: 1041–1050, (June 2004).
- [4] R. J. Milliken, J. Silva-Martínez, E. Sánchez-Sinencio. "Full On-Chip CMOS Low-Dropout Voltage Regulator". *IEEE Transactions on Circuits and Systems–I: Regular Papers*, vol. 54 (n° 9): pp: 1879–1890, (September 2007).
- [5] V. Gupta, G. A. Rincón–Mora, P. Raha. "Analysis and Design of Monolithic, High PSR, Linear Regulator for SoC Applications". *Proceedings of the IEEE International SoC Conference*: pp. 311–315, (2004).
- [6] R. W. Erickson, D. Maksimovic. "Fundamentals of Power Electronics". 2nd edition, Ed. Kluwer Academic Publishers, (2001).
- [7] J. G. Kassakian, M. F. Schlecht, G. C. Verghese. "Principles of Power Electronics". Ed. Addison–Wesley, (1991).
- [8] N. Mohan, T. M. Underland, W. P. Robbins. "Power Electronics: Converters, Applications and Design". Ed. John Wiley & Sons, (1989).
- [9] P. Midya, F. H. Schlereth. 'Dual Switched Mode Power Converter'. *IECON'89. Industrial Electronics Society*: pp. 155–158, (1989).
- [10] F. H. Schlereth, P. Midya. 'Modified Switched Power Converter with Zero Ripple'. *Proceedings of the 32nd IEEE Midwest Symposium on Circuits and Systems (MWSCAS'90)*: pp. 517–520, (1990).
- [11] A. Conesa, H. Martínez, J. M. Huerta. "Dynamic Analysis of Hybrid DC–DC Converters". *12th European Conference on Power Electronics and Applications (EPE 2007)*, (2nd–5th September 2007).
- [12] H. Martínez, A. Conesa. "Modeling of Linear-Assisted DC–DC Converters". *European Conference on Circuit Theory and Design 2007 (ECCTD 2007)*, (27th–30th August 2007).
- [13] K. M. Smedley, S. Cuk. "One-Cycle of Switching Converters". *Proceedings of the 22nd Power Electronics Specialists Conference (PESC'91)*: pp. 888–896. (1991).
- [14] K. M. Smedley, S. Cuk. "One-Cycle of Switching Converters". *IEEE Transactions on Power Electronics*, vol. 10 (n° 6): pp: 625–633, (November 1995).
- [15] Z. Hu, B. Zhang, W. Deng. "Feasibility Study on One Cycle Control for PWM Switched Converters". *Proceedings of the 5th 35th Annual IEEE Power Electronics Specialists Conference*: pp. 3359–3365, (2004).
- [16] Y. Wang, S. Shen. "Research on One-Cycle Control for Switching Converters". *Proceedings of the 5th World Congress on Intelligent Control and Automation*: pp. 74–77, (June 2004).