

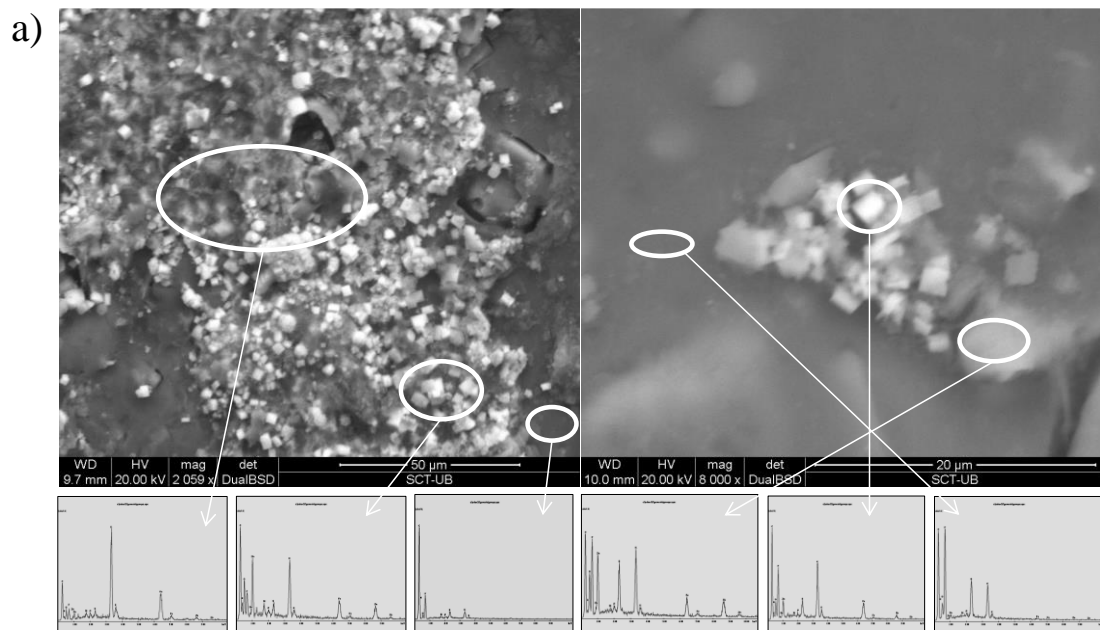
1 **Microbial community dynamics in two-chambered microbial fuel cells: Effect of**
2 **different ion exchange membranes**

3

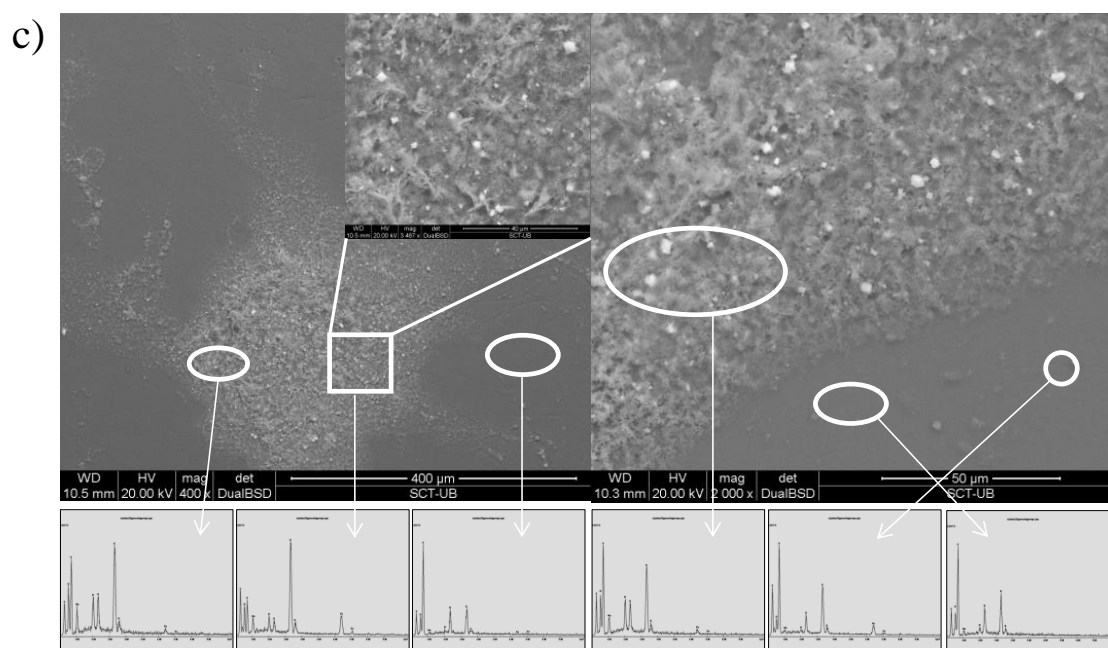
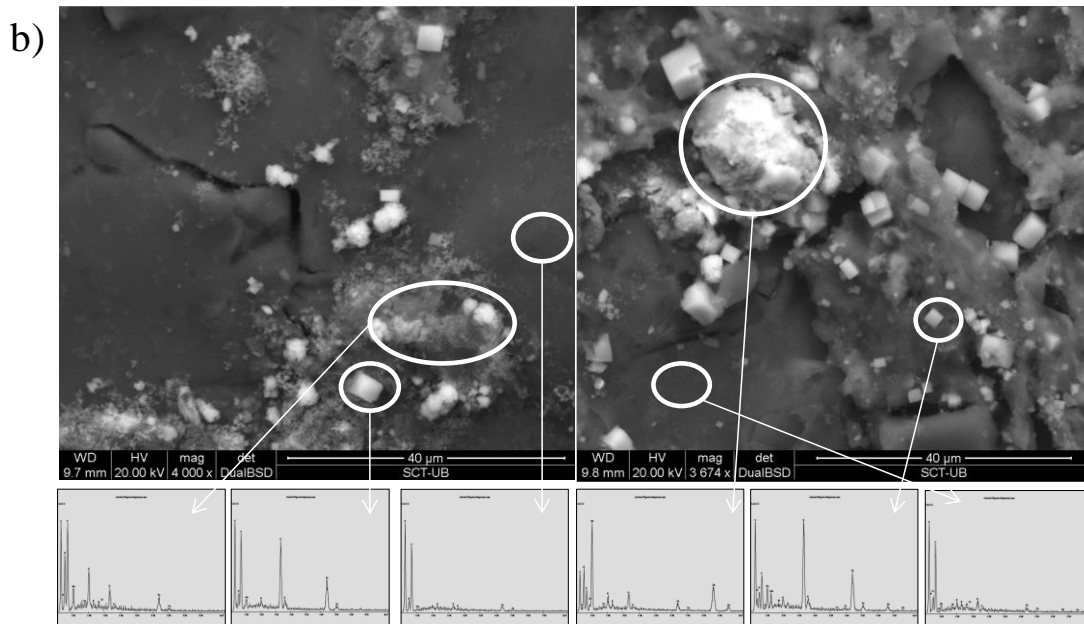
4 Ana Sotres^a, Jordi Díaz-Marcos^b, Miriam Guivernau^a, Josep Illa^c, Albert Magrí^d,
5 Francesc Xavier Prenafeta-Boldú^a, August Bonmatí^a and Marc Viñas^a

6

7 **Supplementary material**



8



3 **Figure S1.** Results obtained through SEM and EDS concerning the three types of ion
 4 exchange membrane used in the MFCs analyzed by means of Scanning Electron
 5 Microscopy and Electron Dispersive X-Ray Spectroscopy. (a) CMI-7000 anode and
 6 cathode side respectively, (b) AMI-7000 anode and cathode side and (c) N-117 anode
 7 and cathode side.