

## Scientific Letter

**Association Between Viscoelastic Characteristics and Sputum Colour in Patients With Bronchiectasis**


To the Director,

In bronchiectasis, mucociliary clearance could be disrupted by excessive production of sputum as well as for changes in the viscoelastic properties of mucus.<sup>1,2</sup> It has been suggested that sputum rheology could be a useful differential biomarker in muco-obstructive lung diseases,<sup>3,4</sup> wherein viscoelasticity tends to be increased.<sup>2</sup> Particularly in bronchiectasis, rheology is altered and differs according to the aetiology,<sup>5</sup> the severity of airway inflammation,<sup>2</sup> just as *Pseudomonas aeruginosa* phenotype.<sup>1</sup>

Sputum colour chart (SCC) is a simple and quick clinical tool for bronchiectasis scoring sputum into mucoid, mucopurulent and purulent.<sup>6</sup> Sputum colour has been associated with the number of affected lobes, bronchiectasis morphological types, lung function, health-related quality of life, need of inhaled corticosteroids,<sup>6</sup> bacterial colonization,<sup>6,7</sup> *Pseudomonas aeruginosa* infection,<sup>7,8</sup> neutrophilic airways inflammation,<sup>7</sup> and mucus clearance,<sup>9</sup> where the purulent one has been related with poorer outcomes. However, its relationship with sputum rheology has never been described. Therefore, the aims of this study were: (i) to analyze the association between rheological properties and sputum colour in bronchiectasis and (ii) to explore the relationship between the sputum colour and other clinical outcomes such as lung function, bronchiectasis severity, quality of life and microbiological isolation of sputum.

We conducted a cross-sectional study. The inclusion criteria were as follows: (1) bronchiectasis adults  $\geq 18$  years diagnosis confirmed by high-resolution computed tomography; (2) ability to perform all clinical tests; and (3) signed informed consent. Exclusion criteria were: (1) diagnosis of cystic fibrosis, sarcoidosis, tuberculosis or active non-tuberculosis mycobacterial infection; (2) any physical and psychological disorder that might interfere with protocol compliance; and (3) participation in any intervention study (clinical trials) in the preceding 6 months. Research Ethics Committee: HCB-0236.

Sputum samples were expectorated spontaneously (one sample per patient) and classified according to the SCC.<sup>6</sup> Samples were divided in two parts: one for microbiological analysis and the other for rheological characterization. For rheological analysis a HAAKE RheoStress 1 rheometer (ThermoFisher, MA) with 35 mm serrated parallel plate geometry was used. Samples were loaded onto a Peltier plate set at 37 °C and with a distance between plates of 400  $\mu\text{m}$ . An oscillatory test was done for shear stress ( $\tau$ ), ranging from 0.1 Pa to 5 Pa at an angular frequency ( $\omega$ ) of 1 rad/s. The storage modulus ( $G'$ ), loss modulus ( $G''$ ), complex viscosity ( $|\eta^*|$ ) and strain

( $\gamma$ ) were recorded. Casson yield stress ( $k_0$ ), and Casson plastic viscosity ( $k_{\mu}$ ) were computed by numerically adjusting the recorded data to the Casson model.<sup>10</sup> Other clinical outcomes were collected: chronic therapy, quality of life using QoL-B questionnaire,<sup>11</sup> severity of bronchiectasis using Bronchiectasis Severity Index (BSI)<sup>12</sup> and FACED score<sup>13</sup> and lung function with EasyOne™ World Spirometer (nidd Medical Technologies, Zurich, Switzerland).

Descriptive statistics were used for basic features of study data, and appropriate statistical tests were performed to compare groups. Categorical variables were compared via Fisher's exact test, while continuous variables in the three groups were contrasted by the analysis of variance (ANOVA) or the non-parametric Kruskal–Wallis test with post hoc pairwise comparisons using Bonferroni's adjustment to control the family-wise error rate.

Sixty-four samples were included and classified as: mucoid (11%), mucopurulent (56%) and purulent (33%) (Table 1). Purulent samples had higher values of  $G'$ ,  $G''$  and  $|\eta^*|$  at  $\tau=1$  Pa compared to mucopurulent and mucoid ones ( $p < 0.05$ ) (Fig. 1A), and lower values of  $\gamma$  at  $\tau=1$  Pa (purulent  $\gamma$  0.2[0.1–0.3] vs. mucopurulent 0.4[0.2–0.8] vs. mucoid 1[0.4–1.3],  $p < 0.01$ ). Normalized viscosity of sputum showed a non-Newtonian shear-thinning fluid behaviour when increasing  $\tau$  independently of colour (Fig. 1B). In addition, the evolution of viscosity showed higher values according to the sputum colour and these were maintained independently to the shear stress (Fig. 1B). The Casson plastic viscosity (Fig. 1C) showed a statistically significant difference between purulent and the other groups ( $p < 0.05$ ). On the other hand, the Casson yield stress (Fig. 1D) showed no differences between groups, which is an indicator that the fluid behaviour is the same in all groups. Moreover, patients with purulent colour had worse levels of quality of life compared to mucopurulent group, specifically in the domains of role function, vitality, treatment burden and health perceptions. On the other hand, bronchiectasis severity according to FACED score was statistically different between groups ( $p = 0.033$ ), where light was associated with higher mucopurulent colour, moderate to mucoid, mucopurulent and purulent ones and finally severe to mucopurulent and purulent groups.

In this study, we have described for the first time an association between the SCC and the viscoelastic characteristics of sputum in bronchiectasis. Although rheology has been suggested as a useful differential biomarker in muco-obstructive lung diseases,<sup>3,4</sup> the need of an especial equipment and technical formation may difficult its implementation; so, it is therefore key to find strategies to correlate rheology measures to easier clinical assessments. The results of our study are on this line because we have found an association between viscoelastic properties and the SCC, which is a fast, cheap, and validated tool that have already been included in the daily clinical practice.<sup>6</sup> SCC has been described as a useful and eas-

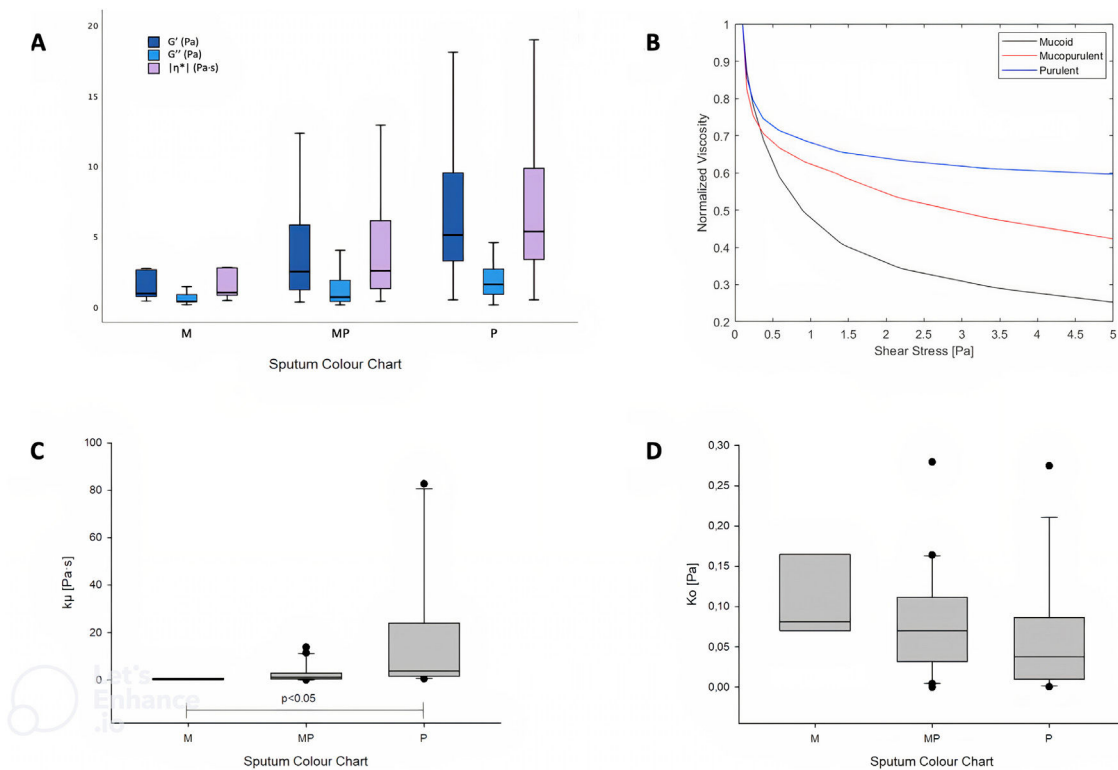
**Table 1**  
Descriptive characteristics according to sputum colour.

	All patients N=64	Mucoid 7 (11)	Mucopurulent 36 (56)	Purulent 21 (33)	p value
Sex, female	26 (40.6)	2 (28.6)	12 (33.3)	12 (57.1)	0.166
BSI scores					0.393
Light	5 (7.8)	0 (0)	4 (11.1)	1 (4.7)	
Moderate	12 (18.7)	1 (14.3)	9 (25)	2 (9.5)	
Severe	47 (73.4)	6 (85.7)	23 (63.9)	18 (85.7)	
FACED score					<b>0.033</b>
Light	8 (12.5)	0 (0)	7 (19.4)	1 (4.7)	
Moderate	37 (57.8)	7 (100)	20 (55.5)	10 (47.6)	
Severe	19 (29.6)	0 (0)	9 (25)	10 (47.6)	
Microbiological culture					0.053
Mucoid <i>Pseudomonas aeruginosa</i>	30 (47)	0 (0)	19 (53)	11 (52.3)	
Non-mucoid <i>Pseudomonas aeruginosa</i>	13 (20.3)	4 (57)	7 (19.4)	2 (9.5)	
No organism reported	14 (21.8)	3 (43)	6 (16.7)	5 (23.8)	
Other	7 (11)	0 (0)	4 (11.1)	3 (14.3)	
Rheology characteristics at $\tau = 1$ Pa					
$G'$ (Pa)	3.15 [1.6–6.6]	0.96 [0.52–2.74]	2.5 [1.2–5.8]	5.1 [3.14–13.8]	<b>0.008</b>
$G''$ (Pa)	0.94 [0.46–1.92]	0.38 [0.32–1.1]	0.69 [0.35–1.9]	1.6 [0.87–3.6]	<b>0.019</b>
$ \eta^* $ (Pa·s)	3.24 [1.7–6.9]	1.01 [0.64–2.8]	2.6 [1.3–6.12]	5.34 [3.23–14.4]	<b>0.009</b>
$\gamma$ [–]	0.31 [0.14–0.6]	1 [0.36–1.6]	0.39 [0.16–0.8]	0.19 [0.07–0.31]	<b>0.009</b>
Quality-of-Life Bronchiectasis Questionnaire					
Physical function	45.8 (31.9)	53.3 (38)	50 (34.6)	37.04 (25.3)	0.160
Role function	59.5 (32.8)	73.3 (43.4)	69.1 (25.5)	40.7 (33.4)	<b>0.026<sup>a</sup></b>
Vitality	54.3 (30.5)	66.7 (40.8)	63.1 (22.8)	37.04 (32.1)	<b>0.015<sup>a</sup></b>
Emotional function	73.2 (29.1)	86.7 (29.8)	80.9 (23)	57.4 (31.9)	0.050
Social function	49.7 (37.6)	66.7 (47.1)	52.4 (36.2)	40.7 (37.1)	0.499
Treatment burden	74.5 (27.9)	66.7 (40.8)	82.14 (21.2)	64.8 (31.2)	<b>0.040<sup>a</sup></b>
Health perceptions	33.3 (23.3)	33.3 (31.2)	41.7 (21.9)	20.4 (17.7)	<b>0.019<sup>a</sup></b>
Respiratory symptoms	63.1 (27.3)	80 (29.8)	65.5 (26.4)	54.6 (26.7)	0.080

Abbreviations: BSI, bronchiectasis severity index.

Data are presented as n (%), mean (SD) or median ( $p_{25}$ – $p_{75}$ ). p-Values in bold are statistically significant.

<sup>a</sup>  $p < 0.05$  between mucopurulent vs. purulent.



**Fig. 1.** Mechanical parameters of sputum. (A) Rheological properties at  $\tau = 1$  Pa. (B) Normalized viscosity in function of the shear stress. (C) Casson plastic viscosity. (D) Casson yield stress.

ily biomarker that could detect the presence of inflammatory cells in the airway,<sup>14</sup> and now could be also associated to the rheology of the sputum. Our findings hypothesize that patients with purulent colour, which have higher viscoelastic values, may benefit from physiotherapy strategies to fluidize sputum,<sup>15</sup> but further research is needed.

Regarding rheological data, in this study we have shown that viscosity decreased with the stress applied, so it is not a valid parameter for comparison between trials if no other parameters are defined. Thus, Casson yield stress and plastic viscosity are stronger parameters since they are independent of shear stress and frequency in the rheological experiments.

The study has the limitation that the number of mucoid samples is very low. However, we highlight the strength that we have also analyzed viscoelastic properties in a dynamic way, helping us to understand how it could change at different shear stress values. We found that the viscoelastic behaviour did not change throughout the experiment, fortifying the results of our study. On the other hand, the association between SCC and viscoelastic properties was independently of other clinical outcomes such as chronic therapy, microbiological analysis, severity of the disease or lung function. Our results showed a difference regarding quality of life where the purulent group had worse scores in comparison with the other two groups. This finding could be related to symptom's burden, hypothesizing that this group could have more difficulties in airway clearance and therefore directly affecting health related quality of life.<sup>16</sup> Finally, sputum colour was also associated with bronchiectasis severity according FACED score, where severe patients had higher number of mucopurulent and purulent ones.

In conclusion, bronchiectasis samples classified as purulent showed increased viscoelastic values compared to mucoid and mucopurulent ones, thus impairing mucociliary clearance. These results were maintained independently of time, applied effort, bronchiectasis severity, microbiological isolation as well as the baseline treatment.

## Funding

Instituto de Salud Carlos III (FIS PI1800145). ISCIII-FEDER, ICREA Academia, SEPAR grants 208 and 628. The funding sources were not involved in study design, collection, analysis, and interpretation of data, in the writing of the report and in the decision to submit the article for publication.

## Conflict of interests

The authors state that they have no conflict of interests.

## References

- Alcaraz-Serrano V, Fernández-Barat L, Scioscia G, Llorens-Llacuna J, Gimeno-Santos E, Herrero-Cortina B, et al. Mucoid *Pseudomonas aeruginosa* alters sputum viscoelasticity in patients with non-cystic fibrosis bronchiectasis. *Respir Med*. 2019;154(May):40–6.
- Ramsey KA, Chen ACH, Radicioni G, Lourie R, Martin M, Broomfield A, et al. Airway mucus hyperconcentration in non-cystic fibrosis bronchiectasis. *Am J Respir Crit Care Med*. 2020;201:661–70.
- Charriot J, Volpato M, Petit A, Vachier I, Bourdin A. Methods of sputum and mucus assessment for muco-obstructive lung diseases in 2022: time to “unplug” from our daily routine! *Cells*. 2022;11:812.
- Murgia X, Kany AM, Herr C, Ho DK, De Rossi C, Bals R, et al. Micro-rheological properties of lung homogenates correlate with infection severity in a mouse model of *Pseudomonas aeruginosa* lung infection. *Sci Rep*. 2020;10:1–8.
- Bush A, Payne D, Pike S, Jenkins G, Henke MO, Ruben BK. Mucus properties in children with primary ciliary dyskinesia: comparison with cystic fibrosis. *Chest*. 2006;129:118–23.
- Murray MP, Pentland JL, Turnbull K, MacQuarrie S, Hill AT. Sputum colour: a useful clinical tool in non-cystic fibrosis bronchiectasis. *Eur Respir J*. 2009;34:361–4.
- Goeminne PC, Vandooren J, Moelants EA, Decraene A, Rabaey E, Pauwels A, et al. The Sputum Colour Chart as a predictor of lung inflammation, proteolysis and damage in non-cystic fibrosis bronchiectasis: a case–control analysis. *Respirology*. 2014;19:203–10.
- Figueiredo MR, Lomonaco I, Araújo AS, Lundgren F, Delgado E. Isolation of and risk factors for airway infection with *Pseudomonas aeruginosa* in patients with non-cystic fibrosis bronchiectasis. *J Bras Pneumol*. 2021;47:e20210017.
- Tambascio J, de Souza HCD, Martinez JAB, Lima J, Jardim JR, Clarice A. The influence of purulence on ciliary and cough transport in bronchiectasis. *Respir Care*. 2013;58:2101–6.
- Casson N. Rheology of disperse systems. Pergamon Press; 1959. p. 84.
- Olveira C, Olveira G, Espildora F, Giron RM, Muñoz G, Quittner AL, et al. Validation of a Quality of Life Questionnaire for Bronchiectasis: psychometric analyses of the Spanish QOL-B-V3.0. *Qual Life Res*. 2014;23:1279–92.
- Chalmers JD, Goeminne P, Aliberti S, McDonnell MJ, Lonni S, Davidson J, et al. The bronchiectasis severity index: an international derivation and validation study. *Am J Respir Crit Care Med*. 2014;189:576–85.
- Martínez-García MÁ, de Gracia J, Vendrell M, Girón RM, Máz L, de la Rosa D, et al. Multidimensional approach to non-cystic fibrosis bronchiectasis: The FACED score. *Eur Respir J*. 2014;43:1357–67.
- Chalmers JD, Finch S. Sputum colour in non-CF bronchiectasis: the original neutrophil biomarker. *Respirology*. 2014;19:153–4.
- Hill AT, Sullivan AL, Chalmers JD, De Soya A, Elborn SJ, Floto AR, et al. British thoracic society guidelines for bronchiectasis in adults. *Thorax*. 2019;74 Suppl. 1:1–69.
- Chalmers JD, Chang AB, Chotirmall SH, Dhar R, McShane PJ. Bronchiectasis. *Nat Rev Dis Prim*. 2018;4:45.

Victoria Alcaraz-Serrano<sup>a,b,c,1</sup>, Héctor Sanz-Fraile<sup>d,1</sup>,  
Leticia Bueno-Freire<sup>a</sup>, Ramón Farré<sup>d,e,f</sup>, Jorge Otero<sup>d,e</sup>,  
Nil Vázquez<sup>a,e,f</sup>, Nona Rovira-Ribalta<sup>a,e,f</sup>,  
Patricia Oscanoa<sup>e,g</sup>, Antoni Torres<sup>a,e,f,g,\*</sup>,  
Laia Fernández-Barat<sup>a,e,f,\*</sup>

<sup>a</sup> Clinic Foundation for Biomedical Research, Hospital Clinic of Barcelona, Barcelona, Spain

<sup>b</sup> Barcelona Institute for Global Health (ISGlobal), Barcelona, Spain

<sup>c</sup> Blanquerna School of Health Science, Ramon Llull University, Barcelona, Spain

<sup>d</sup> Unit of Biophysics and Bioengineering, School of Medicine and Health Sciences, Universitat de Barcelona, Barcelona, Spain

<sup>e</sup> CIBER de Enfermedades Respiratorias, Instituto de Salud Carlos III, Madrid, Spain

<sup>f</sup> Institut d'investigacions Biomèdiques Agustí Pi i Sunyer, Barcelona, Spain

<sup>g</sup> Respiratory Department, Hospital Clínic de Barcelona, Barcelona, Spain

Corresponding authors.

E-mail addresses: atorres@clinic.cat (A. Torres),

lfernand1@recerca.clinic.cat (L. Fernández-Barat).

<sup>1</sup> Co-first authors.