



UNIVERSITAT POLITÈCNICA DE CATALUNYA
BARCELONATECH

Escola Superior d'Enginyeries Industrial,
Aeroespacial i Audiovisual de Terrassa

BIM Based Machine Learning Framework for Healthcare Facilities

Document:

Budget

Author:

Bjørn Harald Høgmo

Director /Co-director:

Nuria Forcada Matheu/ Hamidreza Alavi

Degree:

Master in 'Technology and Engineering
Management'

Examination session:

Autumn, 2022 - 2023

MASTER FINAL THESIS



Table of contents

1. Planification.....	5
2. Budget summary	6



List of figures

Figure 1. Gantt Diagram of this project. Source Own Elaboration	5
---	---

List of tables

Table 1. Elaboration cost of the project. Source: Own elaboration	6
---	---

1. Planification

In this chapter of the budget document, the planning for the elaboration of this project will be presented.

The following is the elaboration of this project through a Gantt chart.

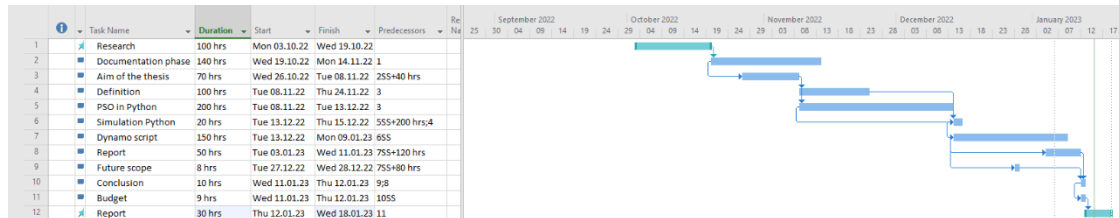


Figure 1 Gantt chart

As can be seen in the attached Gantt chart, the documentation, PSO, Dynamo and report are big time budgets

The case study on BIM based machine learning took totally 887hours.

2. Budget summary

This chapter will detail the planning and budget for the development of the project described in this report.

The following table shows the cost of developing a customer-centric green supply chain strategy in the era of big data:

Cost	Hourly rate (Euros/h)	Time (Hours)	Total Cost (Euros)
Project Development	20	887	17740
Material			
Computer	N/A	N/A	4000
Other			
Software, Revit with Dyanmo	N/A	N/A	4000
Microsoft 365	N/A	N/A	56
Wi-Fi	0.04	970	38
Electricity	0.03	970	29
	N/A	N/A	8.00
	N/A	N/A	8.00
	N/A	N/A	8.00
TOTAL			25453

Table 1. Elaboration cost of the project. Source: Own elaboration

As it is shown in **Table** the design cost of PSO-Script-BIM was 25453 euros. The total project cost is: **25453 Euros**.