

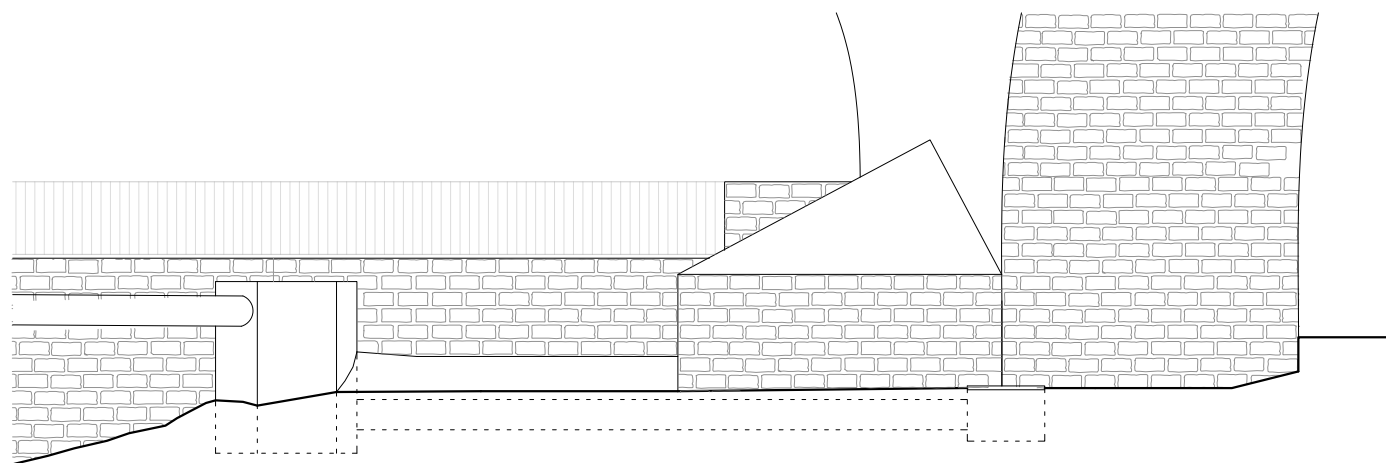


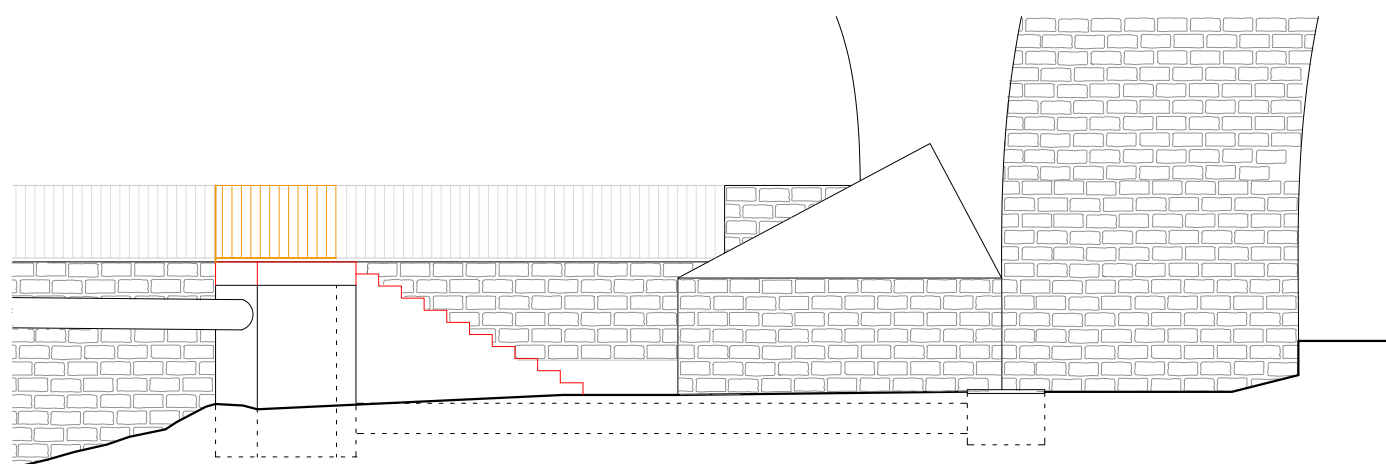
ENDERROC I OBRA NOVA

-  Enderroc tanca metàl·lica (2,60 mL)
-  Nova escala de formigó reposada en arqueta existent



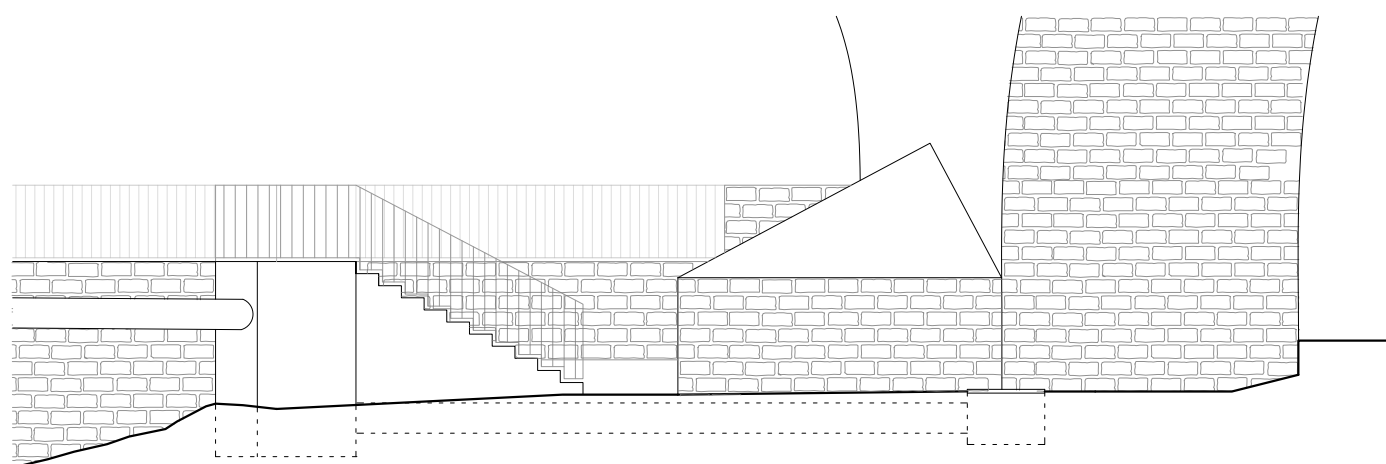
ESTAT ACTUAL

ALÇAT e:1/100



ENDERROC I OBRA NOVA

ALÇAT e:1/100



PROPOSTA

ALÇAT e:1/100

