







ARBRES EXISTENTS

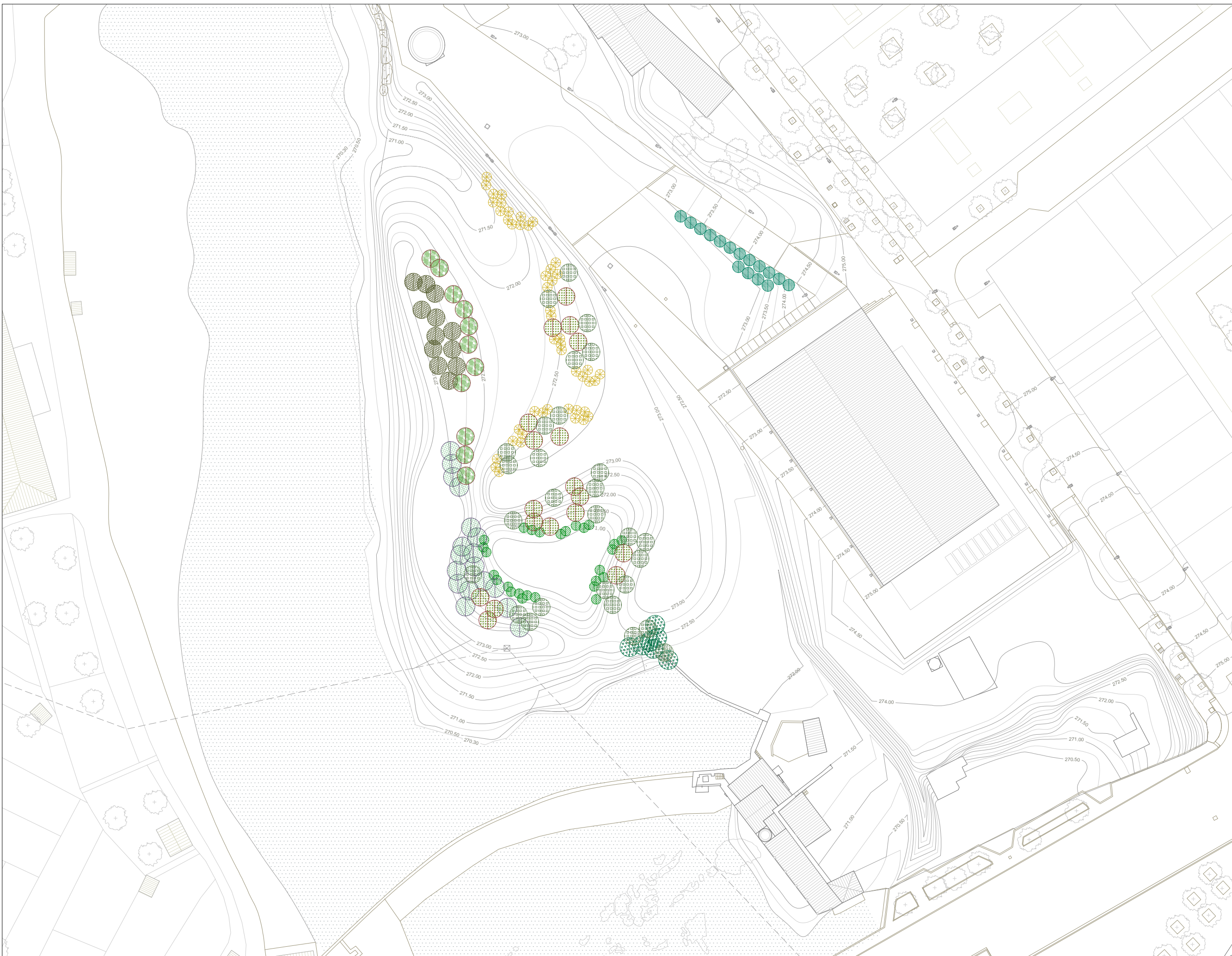
- *Populus alba alba*
- *Populus nigra*
- *Fraxinus angustifolia*
- *Ulmus minor*
- *Ficus carica*
- *Alnus glutinosa*
- *Corylus avellana*
- *Salix Babylonica*
- Phragmites Australis*
- Arundo Donax*








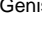

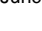

PROPOSTA ARBRAT

-  Populus Alba (JS2)
-  Fraxinus Angustifolia (JS4)
-  Fraxinus Excelsior (JS5)
-  Ulmus Minor (JS1)
-  Alnus Glutinosa (JS3)
-  Arbre Preexistent

* El codi alfanumèric fa referència als amidaments del pressupost



PROPOSTA ARUSTIVA

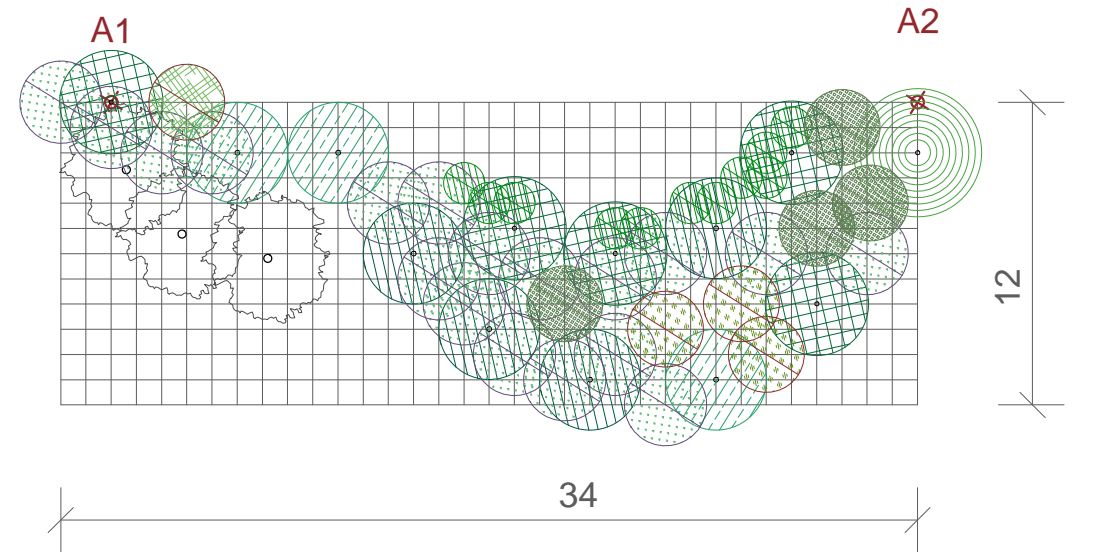
-  Salix Purpurea (JS7)
-  Salix Eleagnos (JS6)
-  Ulmus minor (JS12)
-  Cornus Sanguinea (JS9)
-  Atriplex Halimus (JS13)
-  Genista Scorpius (JS18)
-  Vítex Agnus Castus (JS10)
-  Juncus Effusus (JS11)
-  Viburnum Tinus (JS14)

* El codi alfanumèric fa referència als amidaments del pressupost



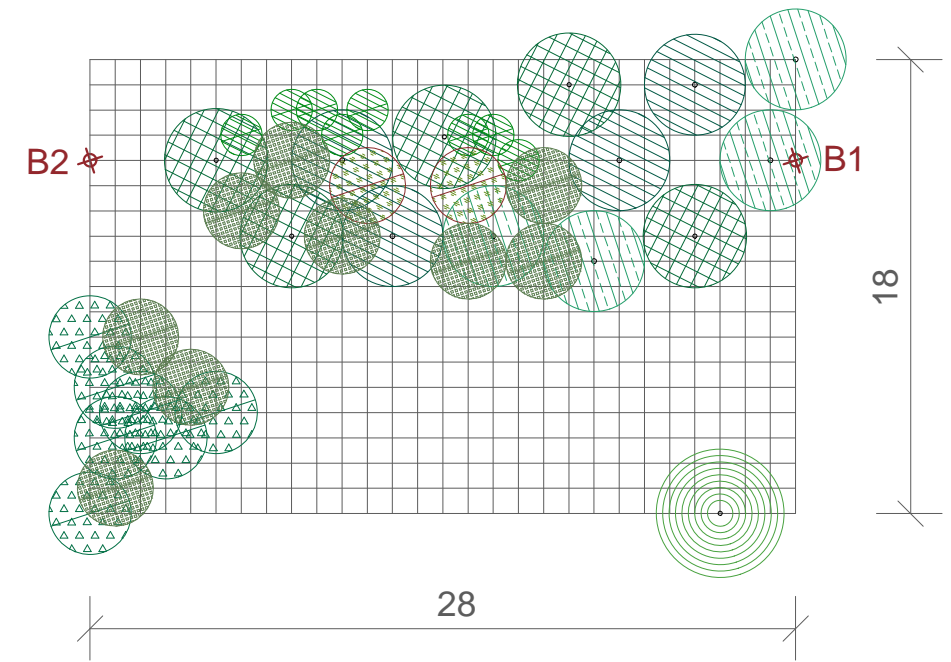
BOSQUET A _ mòdul 34x12

Coordenadas (A B C D)
 A1: C:31,5112 D:56,6313
 A2: C:37,2909 D:76,3754



BOSQUET B _ mòdul 28x18

Coordenadas (A B C D)
 B1: C:5,426 D:45,3746
 B2: C:30,3478 D:50,9812

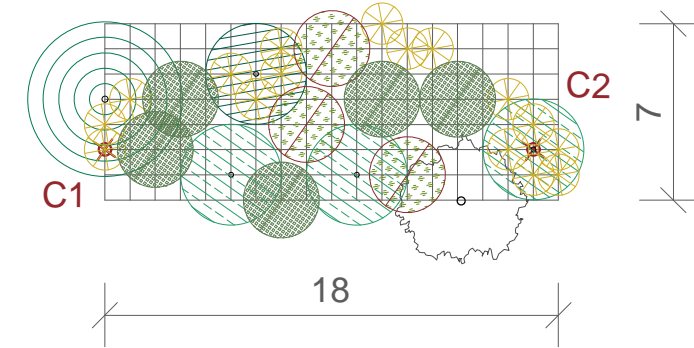


| | | | | | | | |
|--|-----------------------|--|-----------------------|--|------------------|--|--------------------|
| | Populus Alba | | Ulmus Minor (JS1) | | Salix Purpurea | | Atriplex Halimus |
| | Fraxinus Angustifolia | | Alnus Glutinosa (JS3) | | Salix Eleagnos | | Genista Scorpius |
| | Fraxinus Excelsior | | Arbre Preexistent | | Ulmus minor | | Vitex Agnus Castus |
| | | | | | Cornus Sanguinea | | Juncus Effusus |
| | | | | | Viburnum Tinus | | |



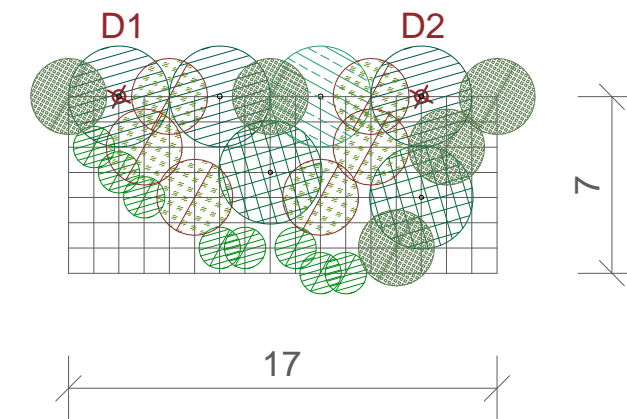
BOSQUET C _ mòdul 18x7

Coordenadas (A B C D)
 C1: B:40,9558 C:29,9168
 C2: B:29,2437 C:19,3193



BOSQUET D _ mòdul 17x10

Coordenadas (A B C D)
 D1: C:26,4738 D:63,0469
 D2: C:15,2300 D:54,4138

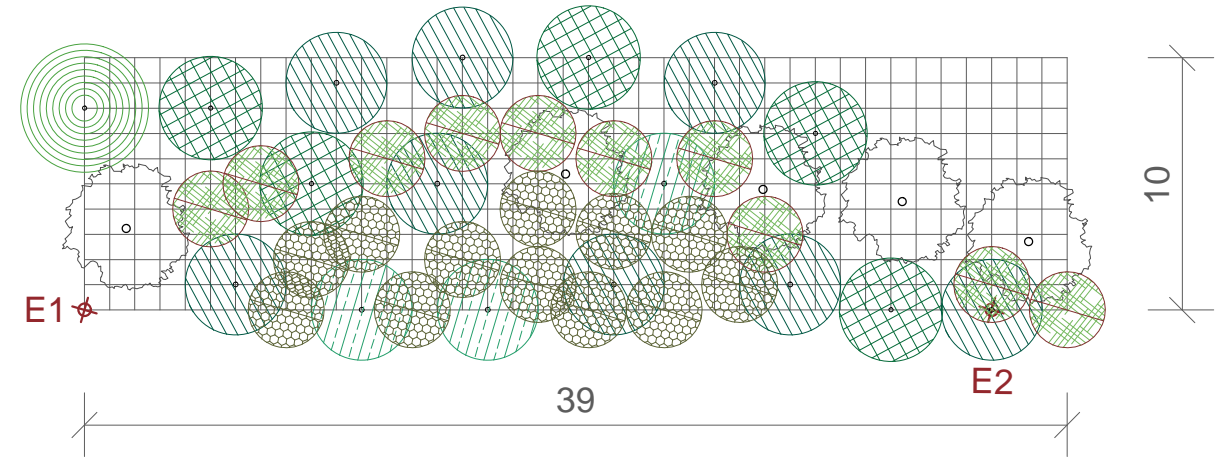


| | | | | | | | |
|--|-----------------------|--|-----------------------|--|------------------|--|--------------------|
| | Populus Alba | | Ulmus Minor (JS1) | | Salix Purpurea | | Atriplex Halimus |
| | Fraxinus Angustifolia | | Alnus Glutinosa (JS3) | | Salix Eleagnos | | Genista Scorpius |
| | Fraxinus Excelsior | | Arbre Preexistent | | Ulmus minor | | Vitex Agnus Castus |
| | | | | | Cornus Sanguinea | | Juncus Effusus |
| | | | | | Viburnum Tinus | | |



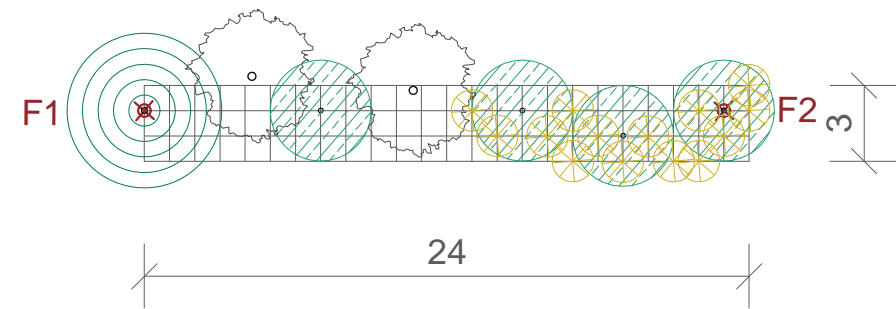
BOSQUET E _ mòdul 39x10

Coordenadas (A B C D)
 E1: A:27,5071 B:29,5575
 E2: A:61,7425 B:38,3800



BOSQUET F _ mòdul 24x3

Coordenadas (A B C D)
 F1: A:6,9228 B:31,5956
 F2: A:29,1919 B:9,1005

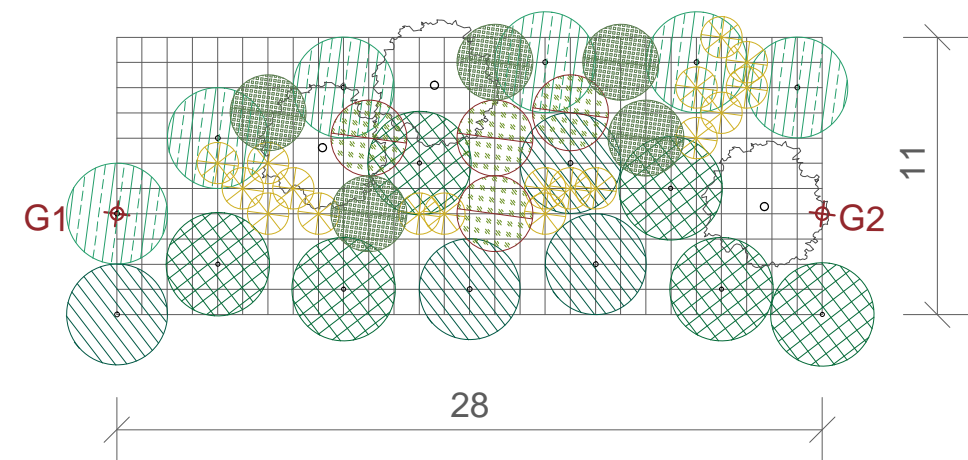


| | | | | | | | |
|--|-----------------------|--|-----------------------|--|------------------|--|--------------------|
| | Populus Alba | | Ulmus Minor (JS1) | | Salix Purpurea | | Atriplex Halimus |
| | Fraxinus Angustifolia | | Alnus Glutinosa (JS3) | | Salix Eleagnos | | Genista Scorpius |
| | Fraxinus Excelsior | | Arbre Preexistent | | Ulmus minor | | Vitex Agnus Castus |
| | | | | | Cornus Sanguinea | | Juncus Effusus |
| | | | | | | | Viburnum Tinus |



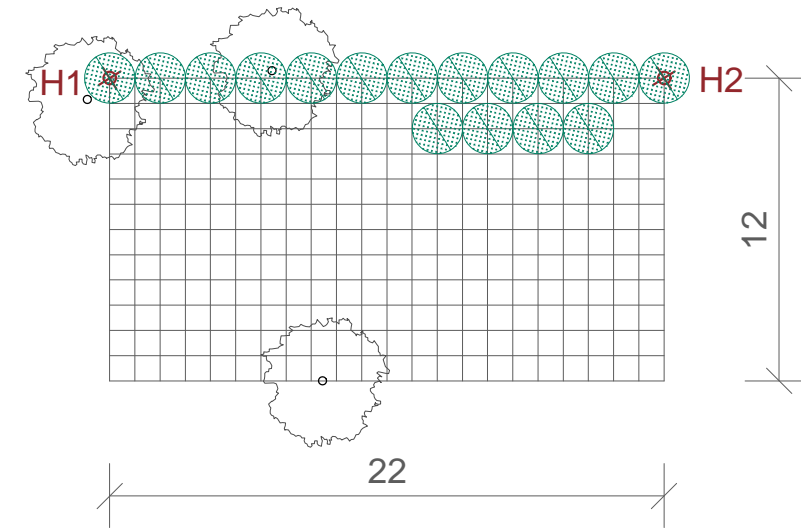
BOSQUET G _ mòdul 28x11

Coordenadas (A B C D)
 G1: A:33,6228 B:5,3341
 G2: A:59,9301 B:27,1435



BOSQUET H _ mòdul 22x12

Coordenadas (A B C D)
 H1: A:49,0167 B:19,2987
 H2: A:70,9813 B:37,8621

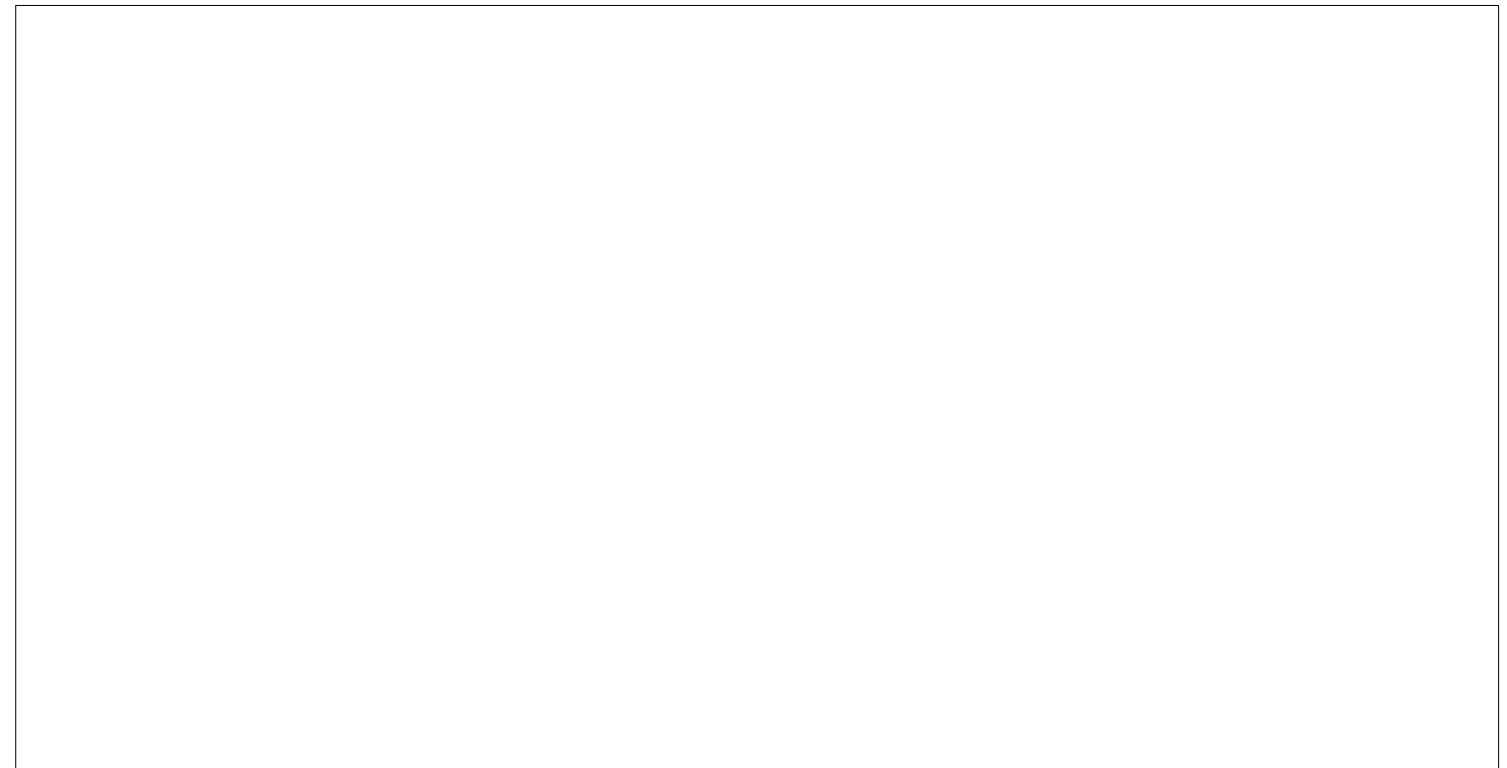
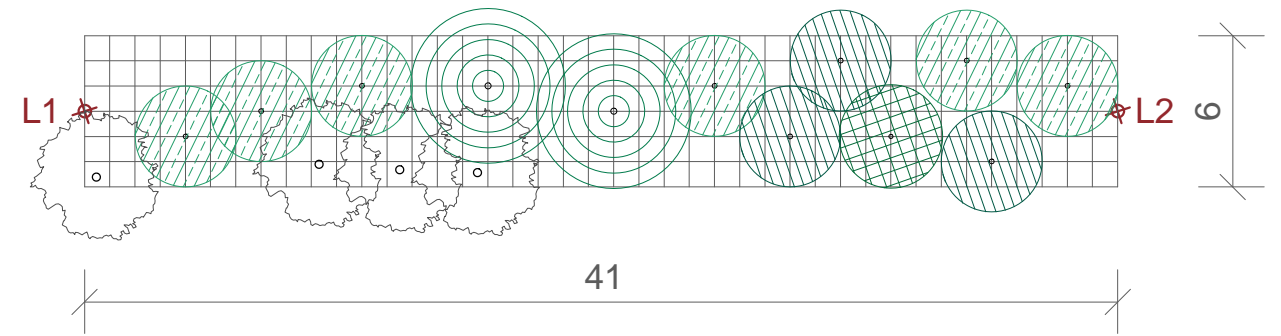


| | | | | | | | |
|--|-----------------------|--|-----------------------|--|------------------|--|--------------------|
| | Populus Alba | | Ulmus Minor (JS1) | | Salix Purpurea | | Atriplex Halimus |
| | Fraxinus Angustifolia | | Alnus Glutinosa (JS3) | | Salix Eleagnos | | Genista Scorpius |
| | Fraxinus Excelsior | | Arbre Preexistent | | Ulmus minor | | Vitex Agnus Castus |
| | | | | | Cornus Sanguinea | | Juncus Effusus |
| | | | | | | | Viburnum Tinus |



BOSQUET L _ mòdul 41x6

Coordenadas (A B C D)
 L1: B:12,8182 C:31,8916
 L2: B:53,3176 C:11,1472



| | | | | | | | |
|--|-----------------------|--|-----------------------|--|------------------|--|--------------------|
| | Populus Alba | | Ulmus Minor (JS1) | | Salix Purpurea | | Atriplex Halimus |
| | Fraxinus Angustifolia | | Alnus Glutinosa (JS3) | | Salix Eleagnos | | Genista Scorpius |
| | Fraxinus Excelsior | | Arbre Preexistent | | Ulmus minor | | Vitex Agnus Castus |
| | | | | | Cornus Sanguinea | | Juncus Effusus |
| | | | | | | | Viburnum Tinus |