

## Reaccions

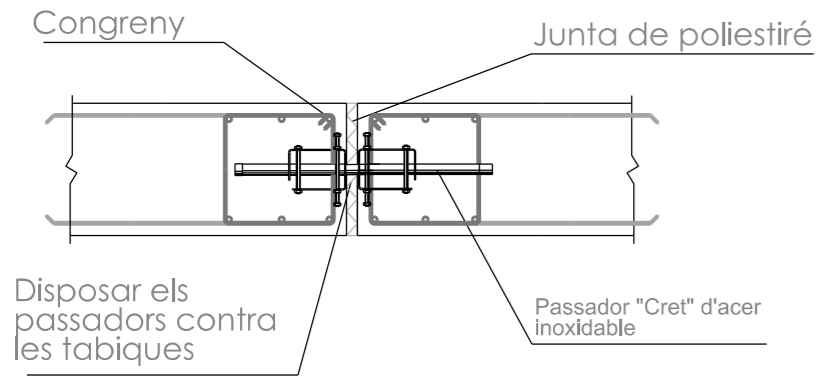
Ry=0.45T  
 Rx=-0.375T  
 Mz= 0.18

## CIMENTACIÓ:

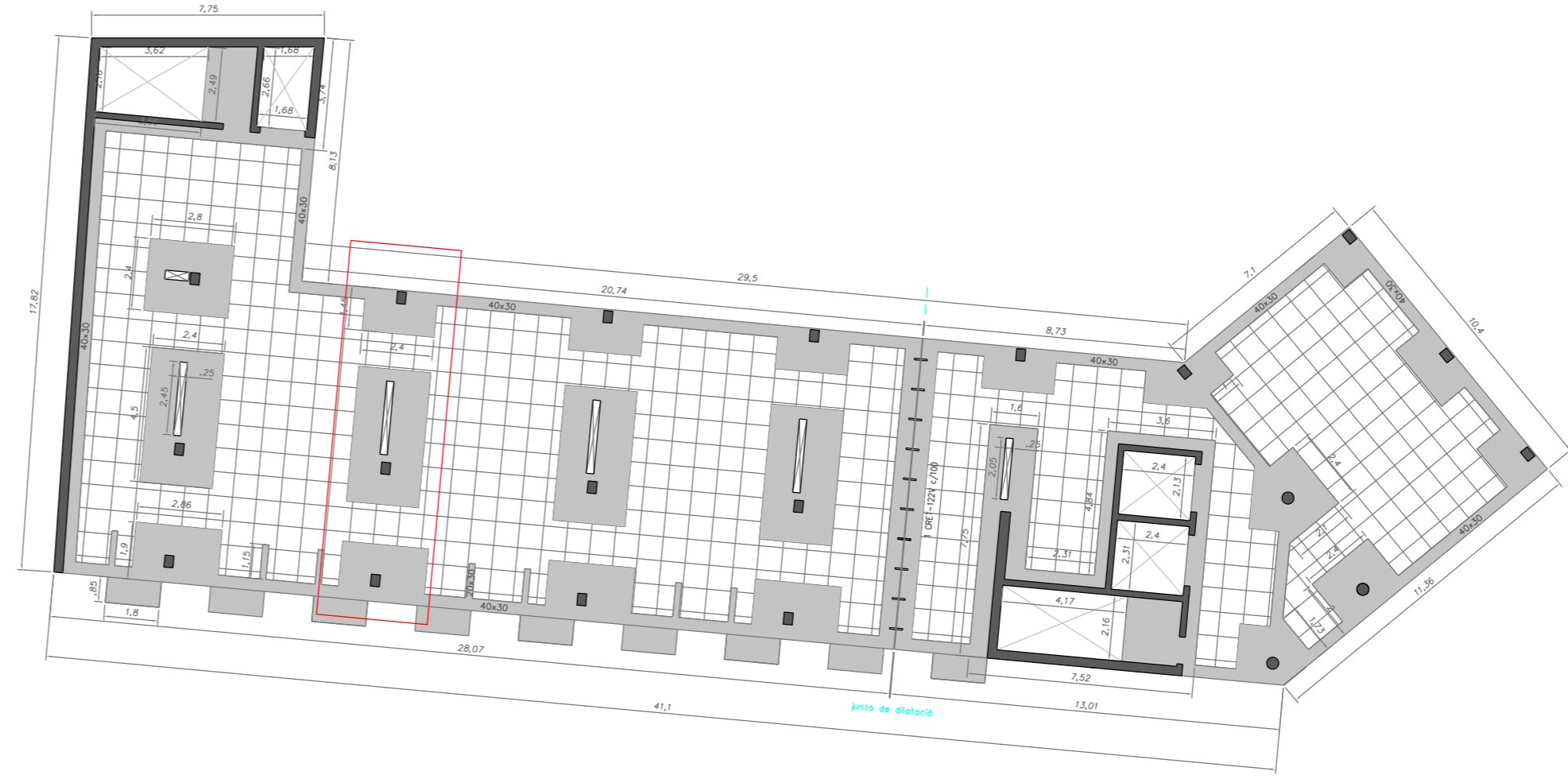
Qadm= 180 kN/m2  
 Altura zapata = 0.8+ 0.1m de hormigón de limpieza  
 Qadm = (N)/B2xL  
 N= 4.41kN  
 PP = 105kN  
 B2= 109.41/180 = 0.6  
 Zapata mínima = 105x0.8m

## Unions

### PASSADOR "CRET" A LA JUNTA DE DILATACIÓ

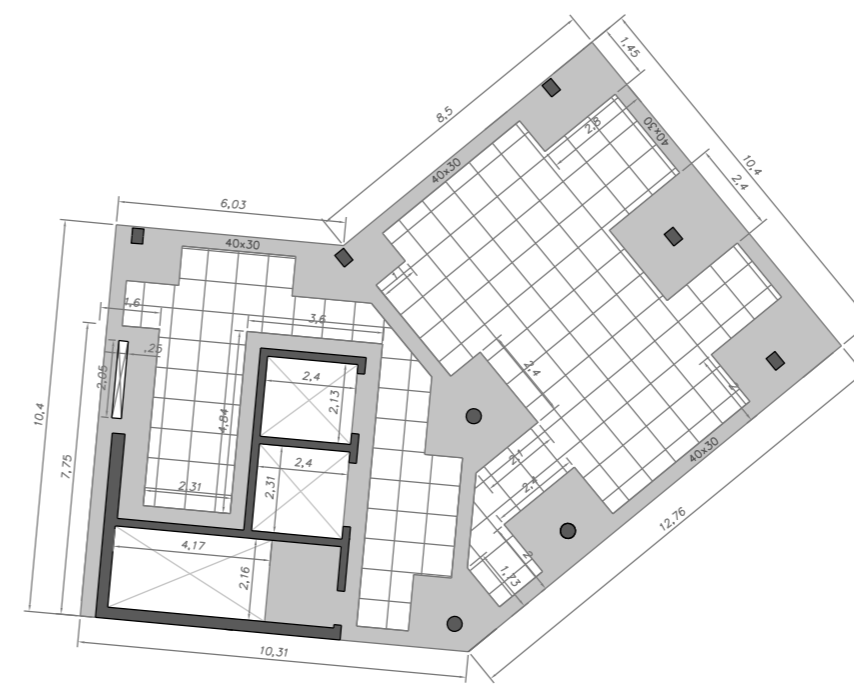
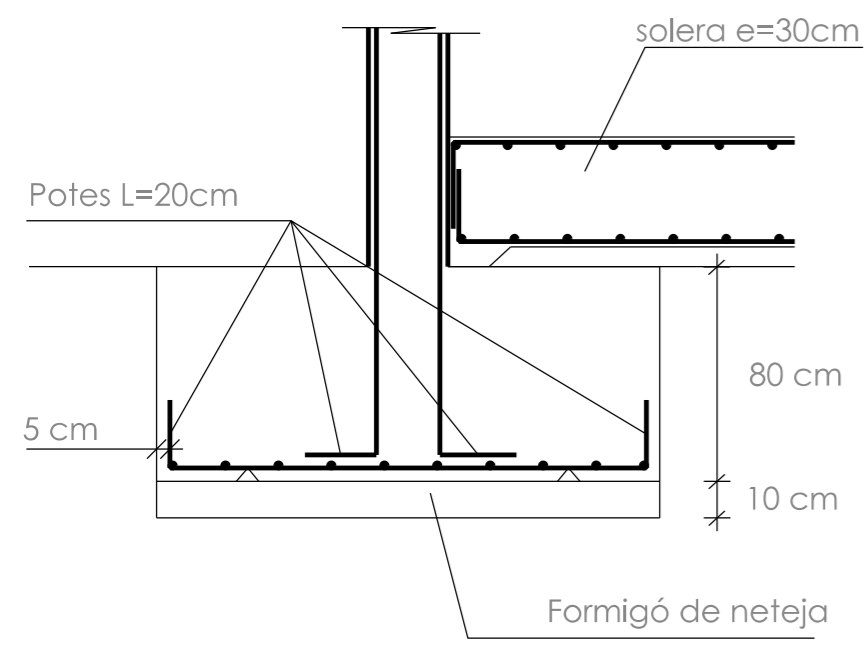


## Sostre forjat Planta +4 i Planta +5



## Sostre Planta Coberta

### SABATA AÏLLADA



## Diagrames

