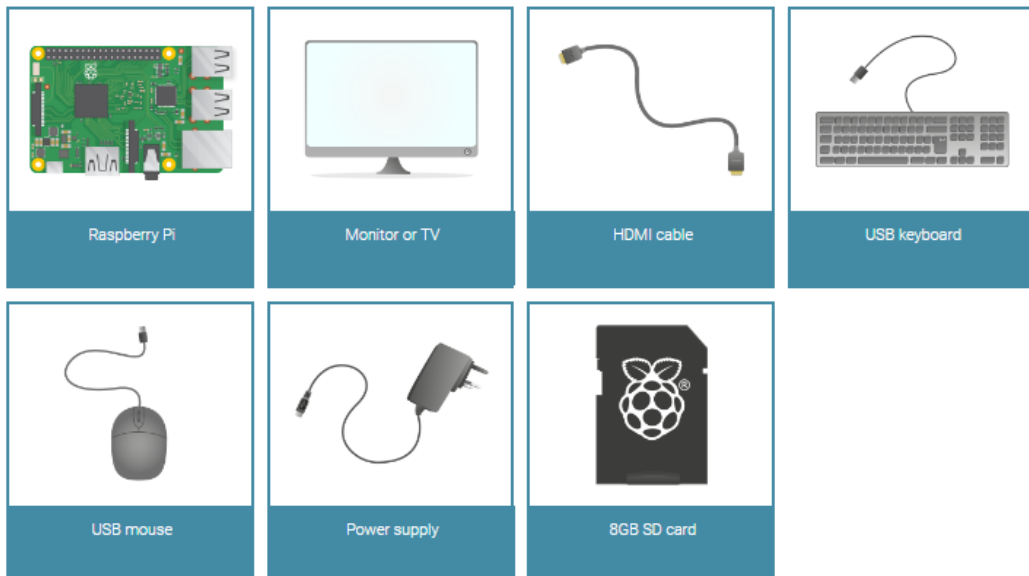


# 1. INITIAL CONFIGURATION

## RASPBERRY COMPONENTS

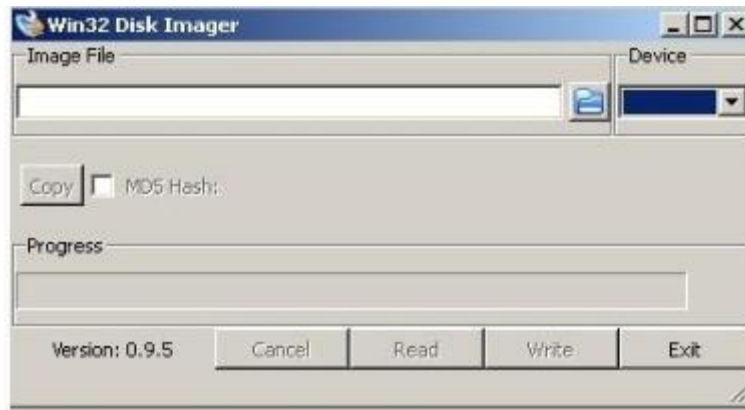


### What you will need



## *INSTALL RASPBIAN IN YOUR RASPBERRY*

1. Visit the official Raspberry Pi [Downloads page](#)
2. Click on Downloads→Raspbian.
3. Click on the Download ZIP button under 'Raspbian Jessie', and select a folder to save it to.
4. Extract the files from the zip.
5. Download win32 Disk Imager: <https://sourceforge.net/projects/win32diskimager/>
6. Finally, click **Burn** to transfer Raspbian to the SD card. You'll see a progress bar that tells you how much is left to do. (Be careful choosing the correct device, otherwise you may lost important information from your disk)



## ***FIRST-TIME CONFIGURATION***

7. The first time that raspberry is initialized must be shown a blue screen like MSDOS/BIOS. In other case, you can show this screen writing: `raspi-config` in the bash.

```
Raspi-config

info          Information about this tool
expand_rootfs Expand root partition to fill SD card
overscan      Change overscan
configure_keyboard Set keyboard layout
change_pass   Change password for 'pi' user
change_locale Set locale
change_timezone Set timezone
memory_split  Change memory split
overclock     Configure overclocking
ssh           Enable or disable ssh server
boot_behaviour Start desktop on boot?
update        Try to upgrade raspi-config

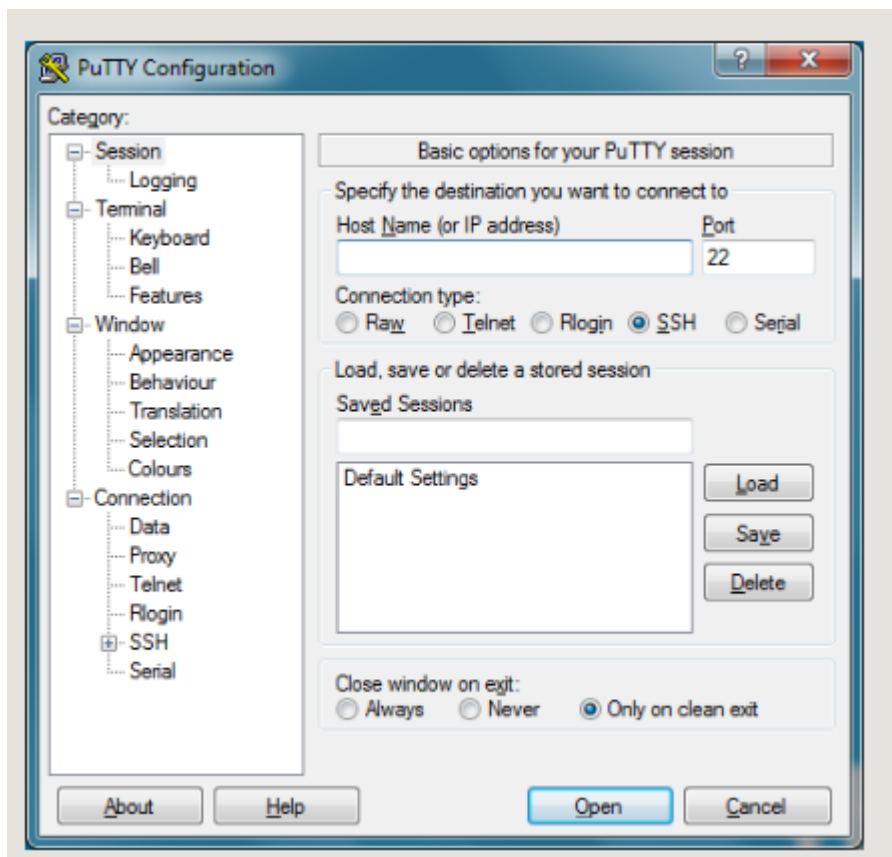
                <Select>                <Finish>
```

8. `Expand_rootfs` – Expand root partition to fill SD card”, to take advantage of all the space of your SD card.
9. `Configure_keyboard` – Set keyboard layout.
10. Enable ssh service

## ***RASPBERRY REMOTE CONTROL***

When the ssh service is enabled in your raspberry, you are able to control the device from your computer. You must follow the next steps:

11. Download the Putty application in your computer. <http://www.putty.org/>
12. Get the Raspberry's IP
13. Establish a connection between your computer and the Raspberry.



- 14- Create a new user ( the name must be the name of your group)

```
sudo adduser group1
```