



# PORTFOLIO

ALBERT GARCIA, DRAFTSMAN DESIGNER & ARCHITECTURE STUDENT

‘FROM SMALL BEGINNINGS COME GREAT THINGS’

## PROFILE

Architecture is the perfect choreography between nature and sensations that protect and accommodates the human. Nature as origin and as the power source of all that exists, and sensations as peace and welfare of the nonpalpable.

Influenced by the architecture made in Barcelona and on the great works of Gaudi, fan of the architects Marcio Kogan and Ramon Esteve, I can't imagine an architecture without a wink of nature. Materials done it by man and the permanent delivery of nature.

"I don't divide architecture, landscape and gardening; to me they are one."

This is the way this personable and friendly, responsible and very respectful, with clear ideas, constantly evolving, hardworking, constant, creative, competent and effective man understand architecture. This is my way of work, my idea.

01

### ACADEMIC PROJECTS.

A few selection of projects done it at University.

02

### COMPETITIONS.

Ideas and projects submitted to different competitions.

02

### PROFESSICNAL PROJECTS.

A few selection of projects where I collaborated with architectural offices.





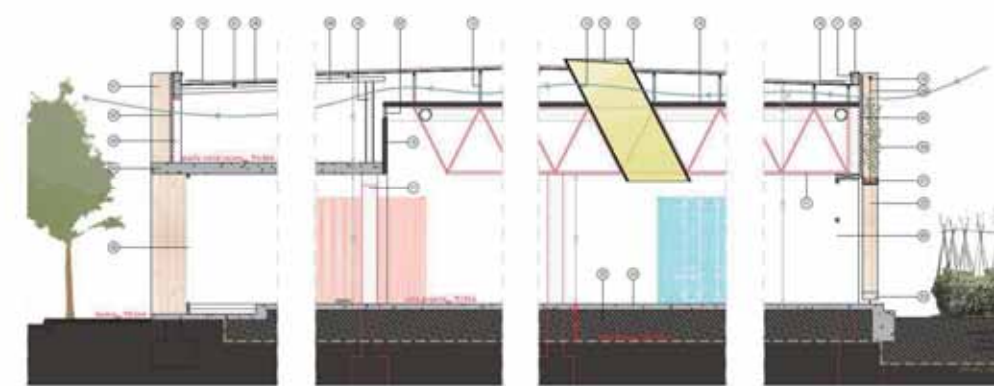


#01

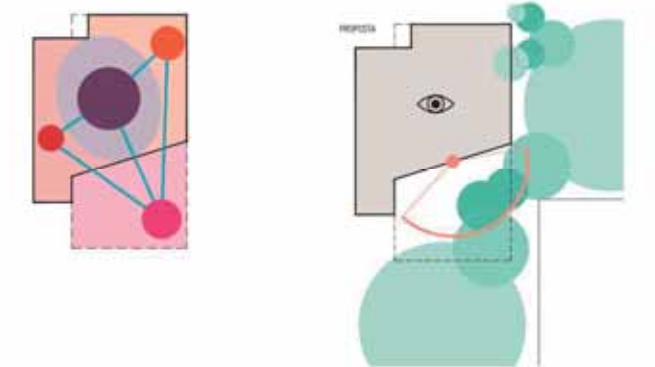
TAP XI, December 2016  
"LINK-MARKET" IN SABADELL

In the depressed neighborhood of Campoamor in Sabadell, we find a traditional market in full decadence. The project object is to revitalize this space with a multi-functional program in which through gastronomy cultures are joined.

In the project presented, it is proposed to open the market to the outside, there are no opaque facades, and it's interior program is divided into three different uses: market, social workshops and an open and covered polyvalent space.



LINK MARKET  
MERCAT DE CAMPOAMOR, SABADELL







## #02

TAP IX, June 2016  
 PROTOTYPE 'GAUSARQ'

As the second part of the project, for this prototype we sought to generate the minimum volume necessary for the practice of a group of Castellers (practitioners of the Catalan tradition of building human towers) from Sant Cugat del Valles.

We designed a space which is supported by pressurized air, trying to maintain conditions of pressure and humidity that are suitable for physical exercise. The base structure is made from basic materials such as pallets and plastic waste obtained from industries in the area.





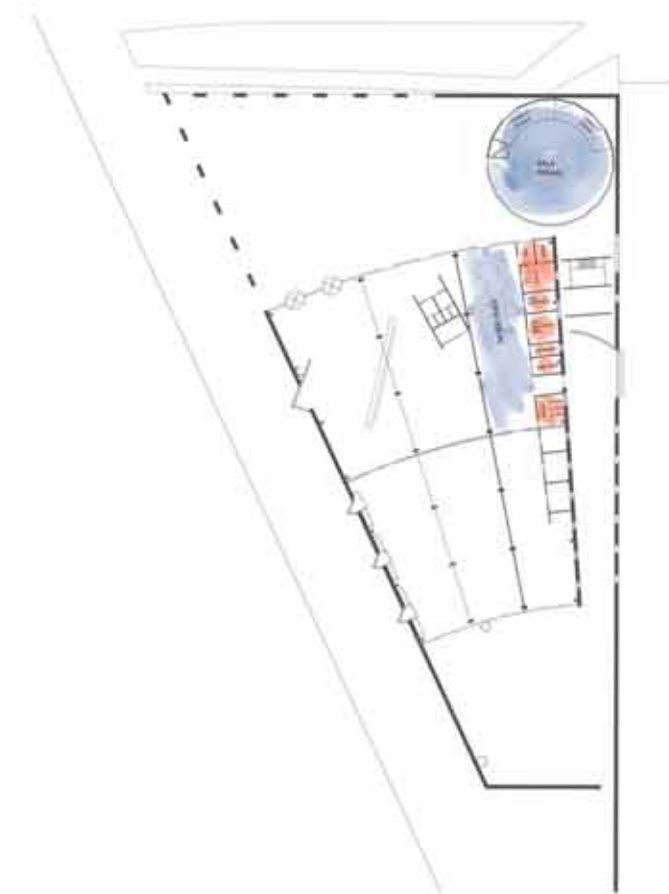
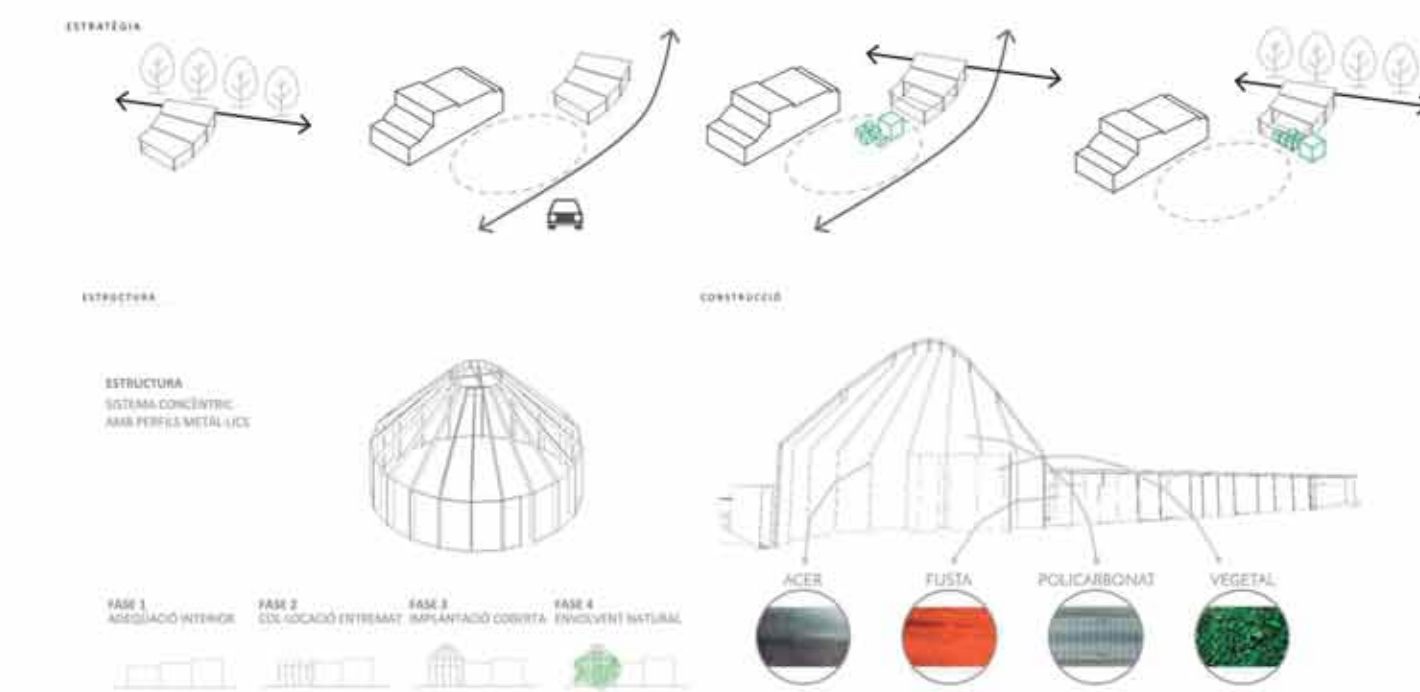


#03

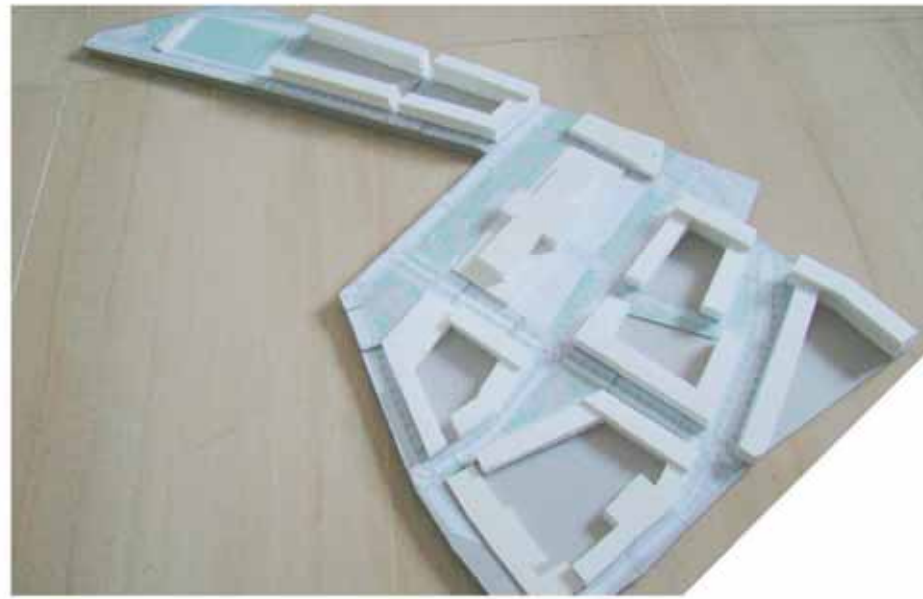
TAP VIII, December 2015  
NEW HOME FOR 'GAUSACS'

We had the mission to find the perfect location for the new headquarter for the castellers of Sant Cugat del Vallès (Gausacs). After studying more than 15 different locations, we performed a detailed analysis of the five with more potential; measuring parameters such as execution cost, ease, time to build and program compatibility.

Finally, our study was presented in front of more than one hundred people, members of the Gausacs who finally, by popular vote, decided that the site that most met their pretensions was the Library.





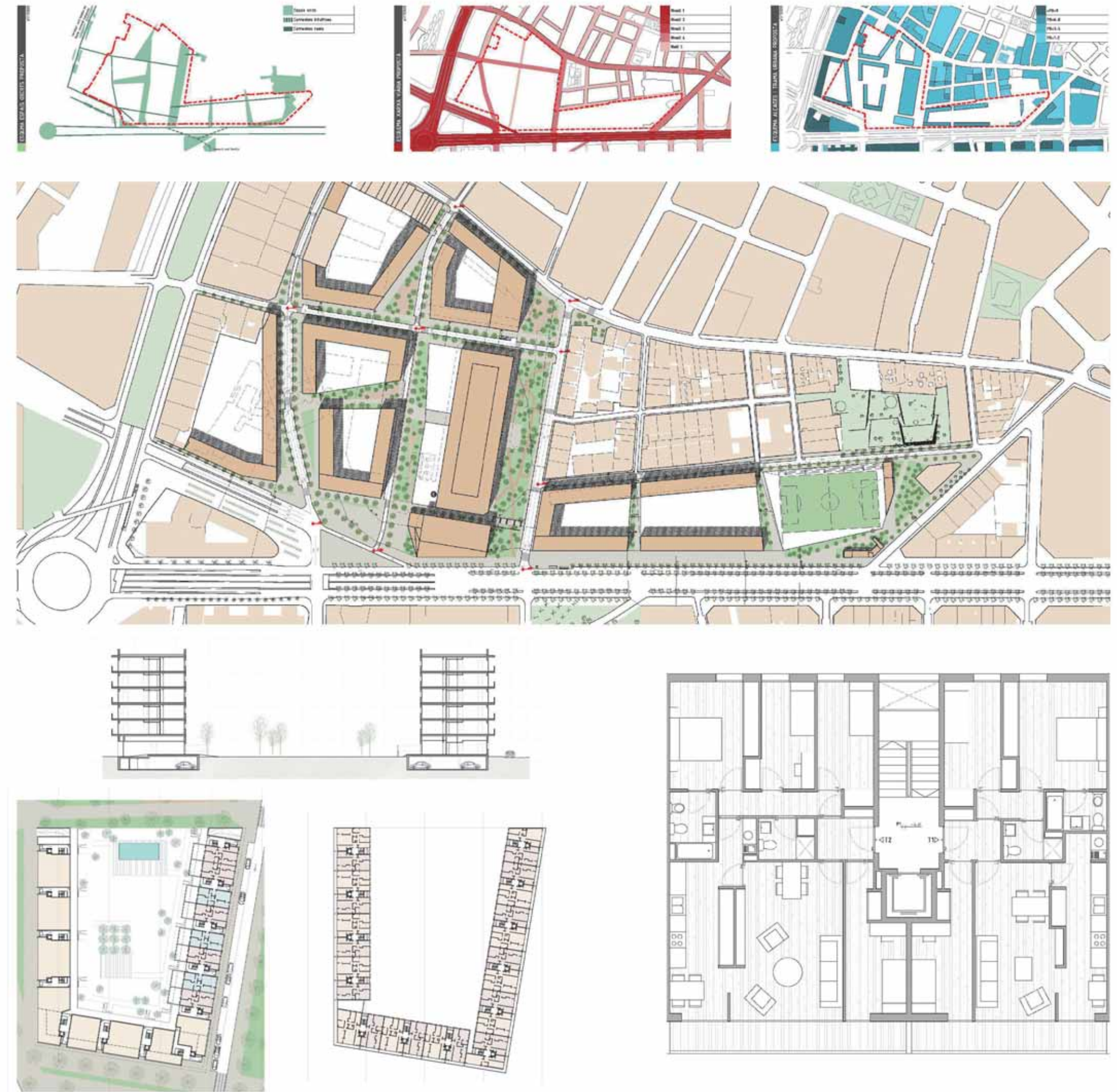


#04

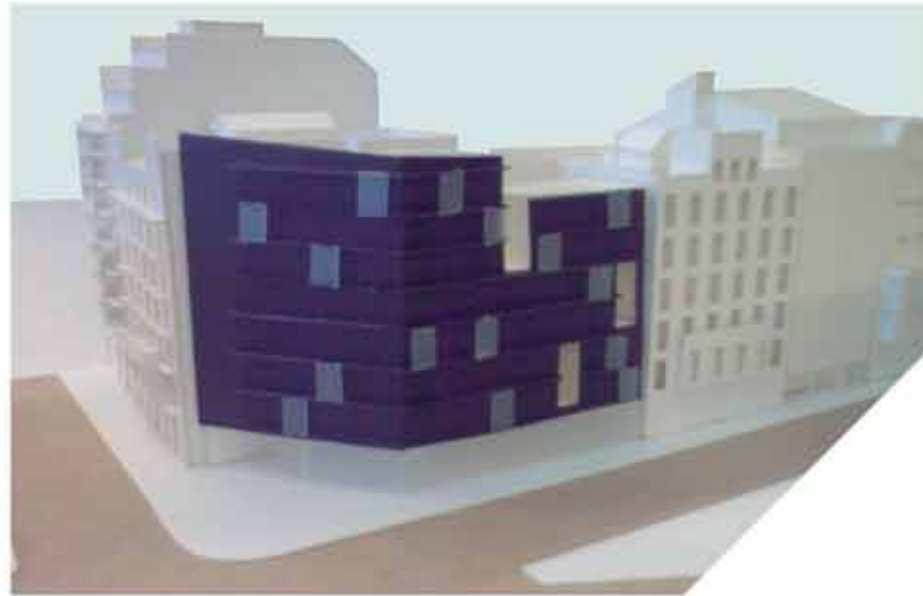
TAP VI, December 2012  
URBAN PLANING IN BARCELONA

We are in the district of Sants in Barcelona, in which we aim to improve services and connections of the neighborhood occupying the large area of an old and disuse textile factory.

The project addresses gaps in road communication, green spaces and facilities for the neighborhood (as well as a school, a care center and a library).







#05

TAP V, June 2012  
HOUSING PROJECT IN "L'EIXAMPLE" OF BARCELONA

We are in the Eixample district of Barcelona, in which we propose to replace a gas station on a multi-family residential building. Located in a corner, we require a program in which each of the resulting apartments must have cross-ventilation.

The proposed project meets all the requirements and meets the program. The end result is 23 apartments of two typologies: one bedroom and two bedroom duplex. They all have cross-ventilation through the interior courtyard, courtyard which is accessed through an integrated housing in a pleasant and functional community space gateway.









#01

#### CORNERS OF BARCELONA (2012)

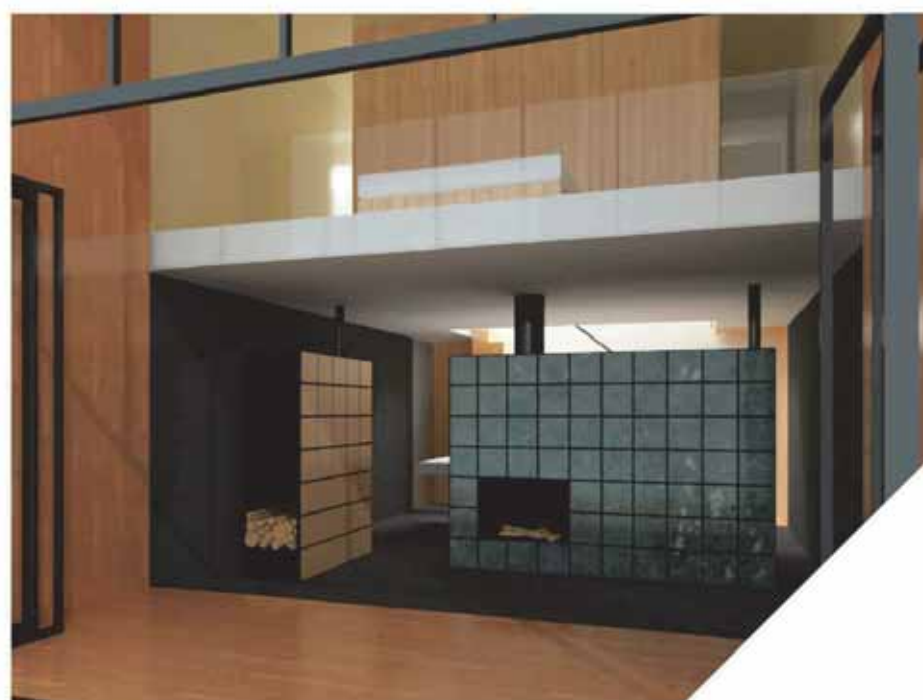
Corners of Barcelona contest is purposeful participation in the design of the city. Twelve places or corners that are precarious are subjected to a contest of ideas.

In this case, we had the deteriorated and bad end of a street with a huge level difference between streets.

Frist, I thought basic propose the installation of a elevator that can be used for disabled persons, then reform the stairs and finally, give the place a unabashedly look with the incorporation of a false town house facade and play with colors on the stairs.







#02

### III INTERIOR AND DESIGN PORCELANOSA CONTEST (2010)

Interior design and innovation of a Loft living space using natural stone and wood applied to the interior, as well as encouraging creative activity of new and future professionals, fostering the promotion and dissemination of their work.

In collaboration with a partner we propose a dynamic loft space based in the modularity of a multi-use element.



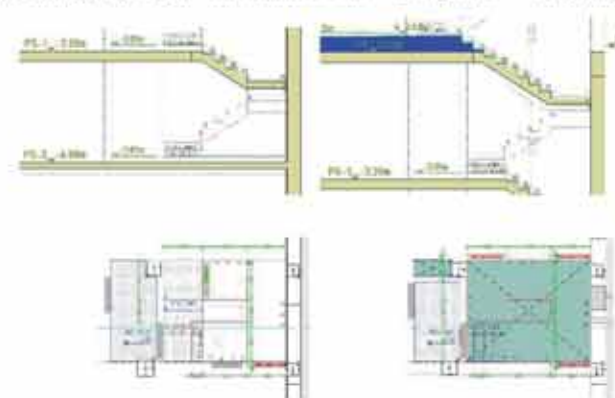






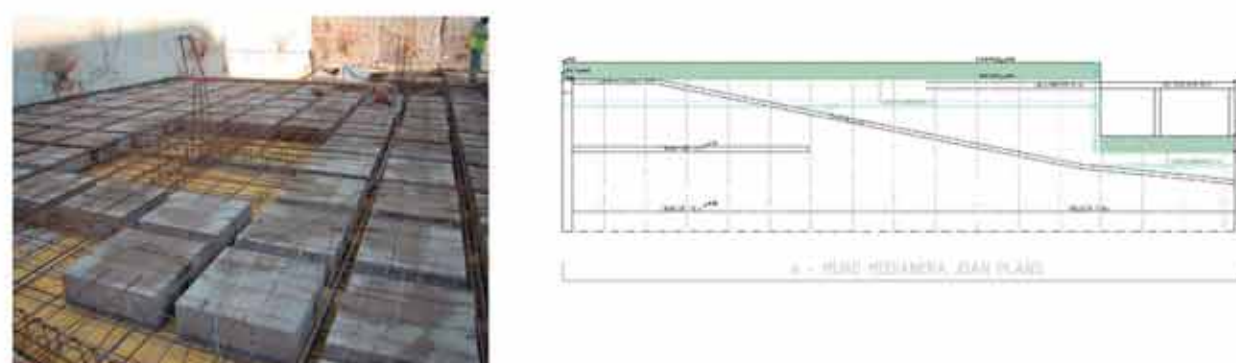
#01

HOUSING PROJECT IN TERRASSA: 12 FLATS + 1 COMMERCIAL + PK = 2850 M<sup>2</sup>



#02

HOUSING PROJECT IN SABADELL 1: 44 FLATS + 7 COMMERCIAL + PK = 4250 M<sup>2</sup>



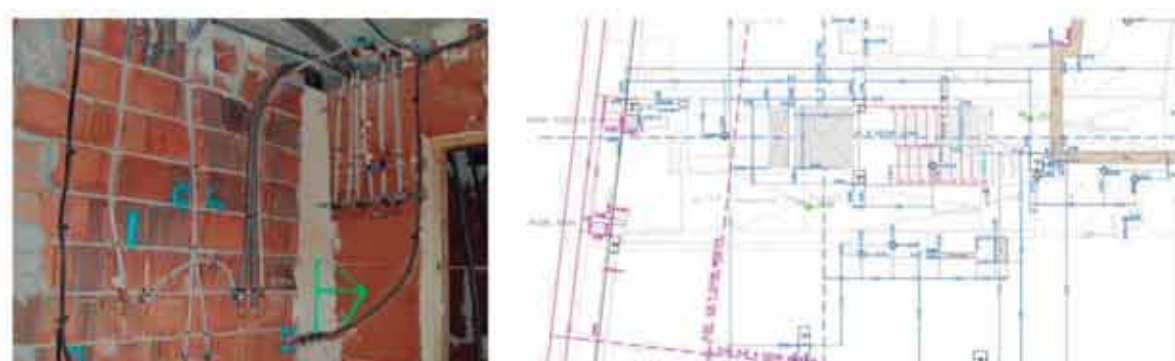
#03

HOUSING PROJECT IN SABADELL 2: 12 FLATS + 1 COMMERCIAL + PK = 1031 M<sup>2</sup>



#04

HOUSING PROJECT IN BARBERA: 18 FLATS + 3 COMMERCIAL + PK = 1975 M<sup>2</sup>



#05

HOUSING PROJECT IN GRANOLLERS: 12 FLATS + PK = 1250 M<sup>2</sup>



#06

SINGLE HOUSE IN BELLATERRA 1 = 415 M<sup>2</sup>



#07

SINGLE HOUSE IN BELLATERRA 2 = 319 M<sup>2</sup>



#08

PRIMARY CARE CENTER IN PRATS DE LLUCANES = 1703 M<sup>2</sup>





#09



SINGLE HOUSE IN RUBI = 160 M<sup>2</sup>



#10



SINGLE HOUSE IN VALLDOREIX 1 = 380 M<sup>2</sup>



#11



SINGLE HOUSE IN MONTGAT = 185 M<sup>2</sup>



#12



SINGLE HOUSE IN VALLDOREIX 2 = 240 M<sup>2</sup>



#13



SINGLE HOUSE IN VALLDOREIX 3 = 280 M<sup>2</sup>



#14



SINGLE HOUSE IN VALLDOREIX 4 = 220 M<sup>2</sup>



#15



SINGLE HOUSE IN BELLATERRA = 250 M<sup>2</sup>



#16



SINGLE HOUSE IN MONTGAT 2 = 295 M<sup>2</sup>





VISIT MY PORTFOLIO & RESUME WEBSITE:

[albertgsv84.wix.com/arquitectural](http://albertgsv84.wix.com/arquitectural)