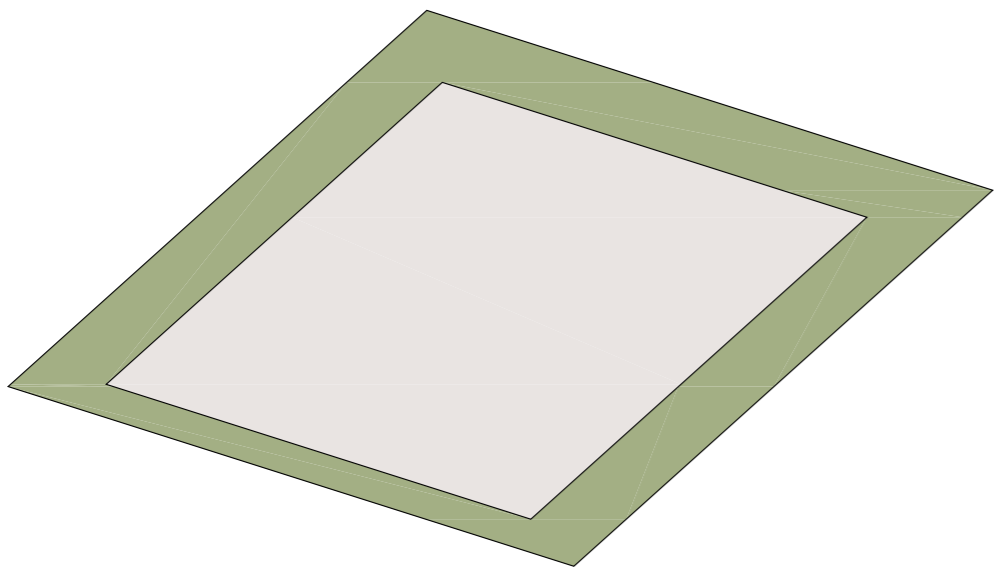
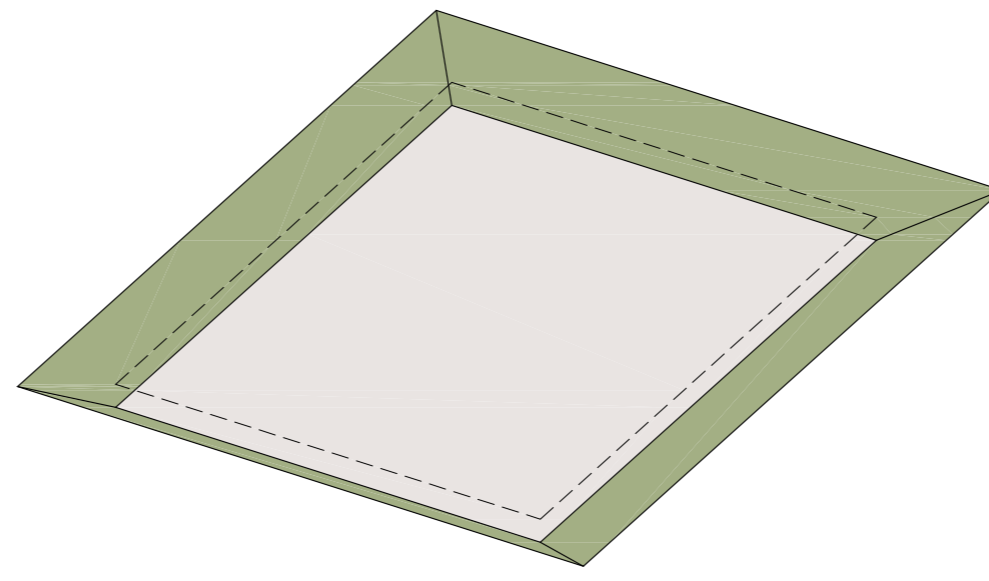


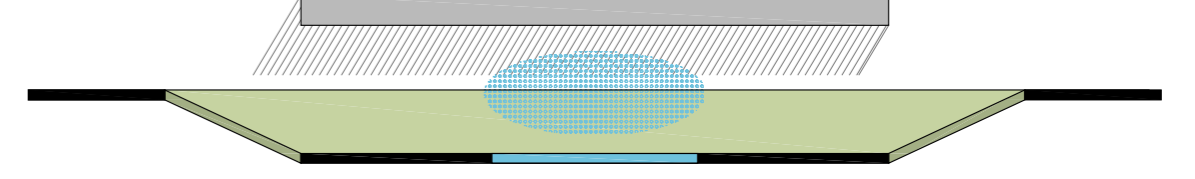
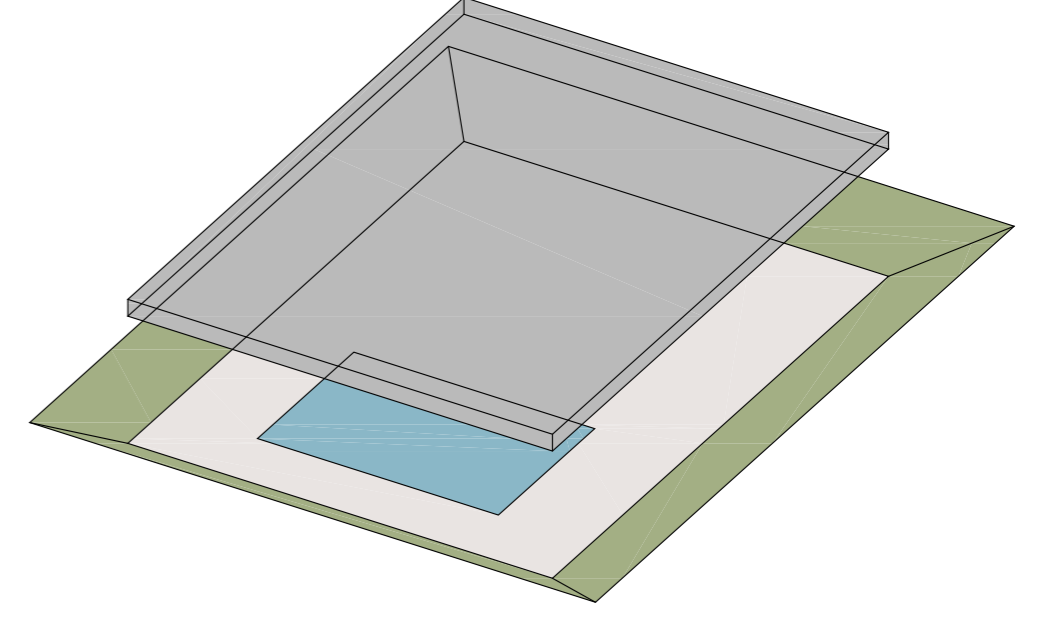
PARCELA-SOLAR



DOMINIO SOBRE PARCELA
TALUD = HORIZONTE VERDE



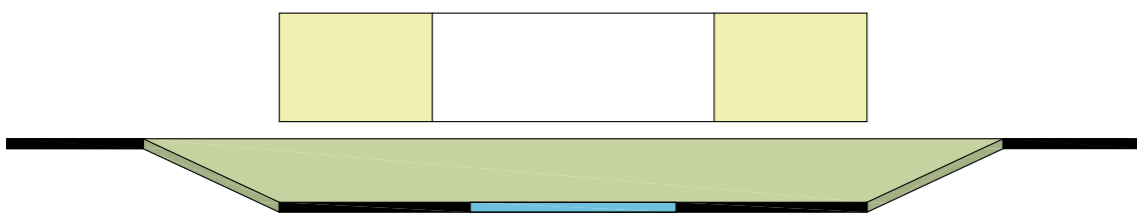
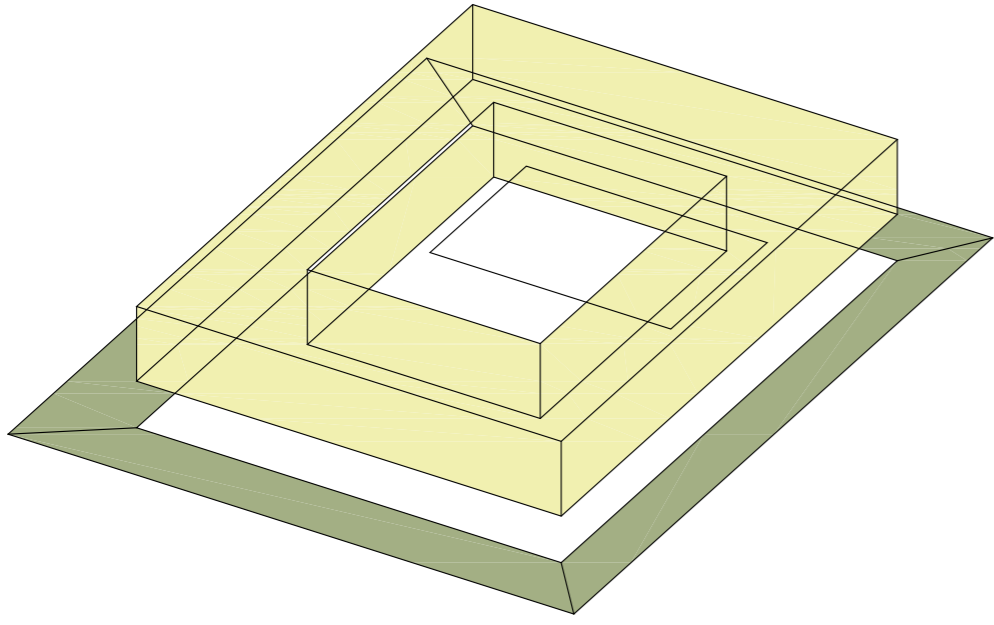
CUBIERTA = SOMBRA
AGUA = FRESCO



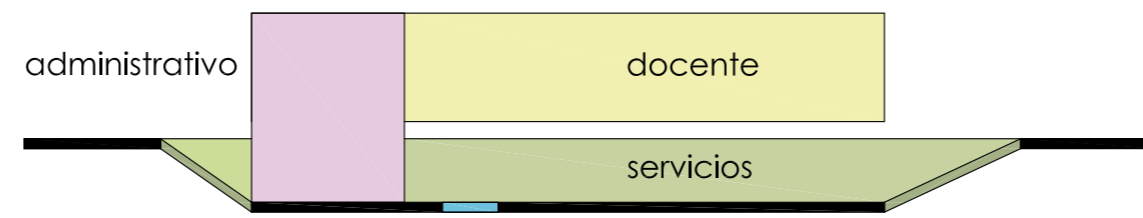
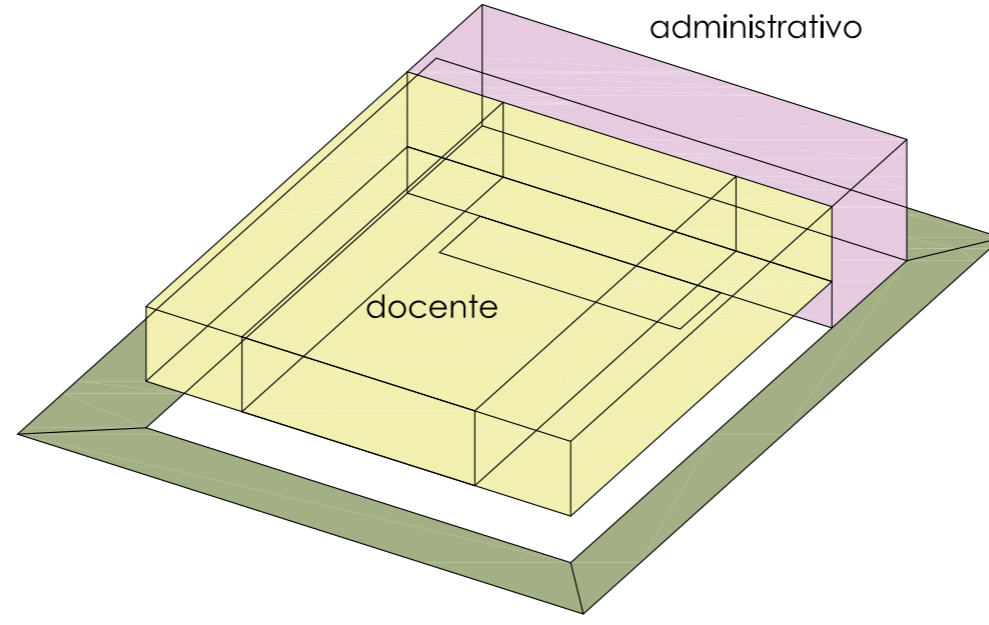
ENSEÑANZA DE ARQUITECTURA:

- CONOCIMIENTO POR CONTACTO
- SÍNTESIS DE DISCIPLINAS = TRANSVERSALIDAD
- VALIDACIÓN POR CONSENSO

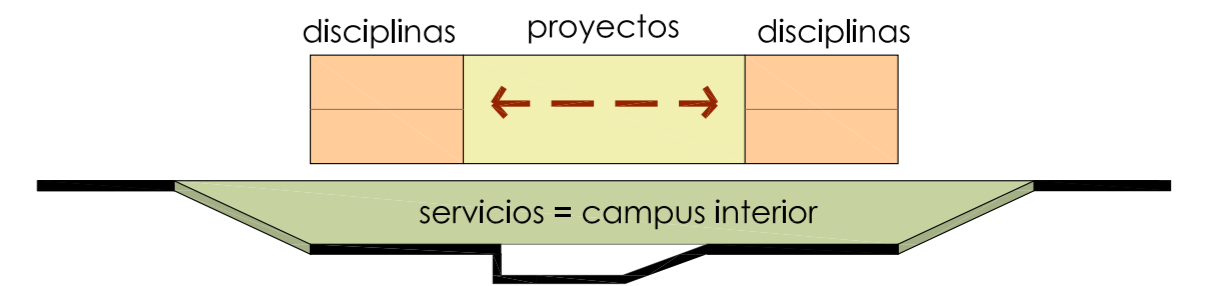
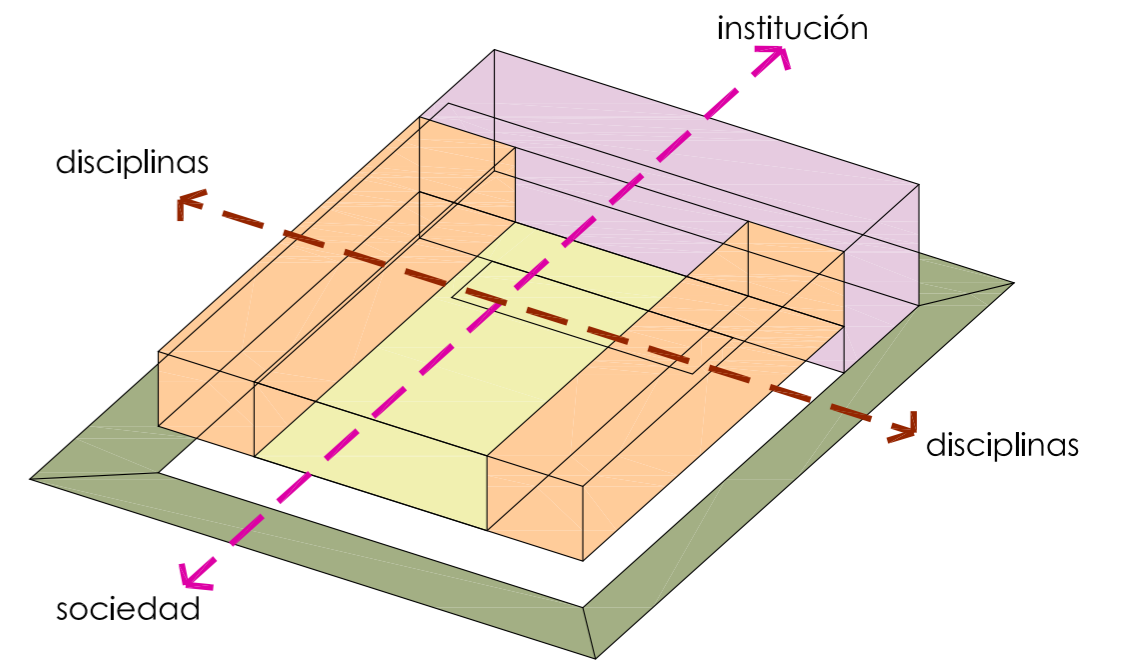
→ PATIO COMO ESPACIO DE CONVERGENCIA



PROGRAMA



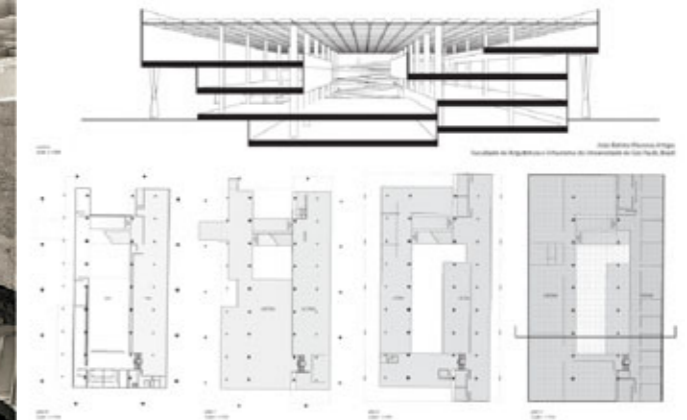
TRANSVERSALIDADES



A&A building, Yale university, USA, Paul Rudolph.

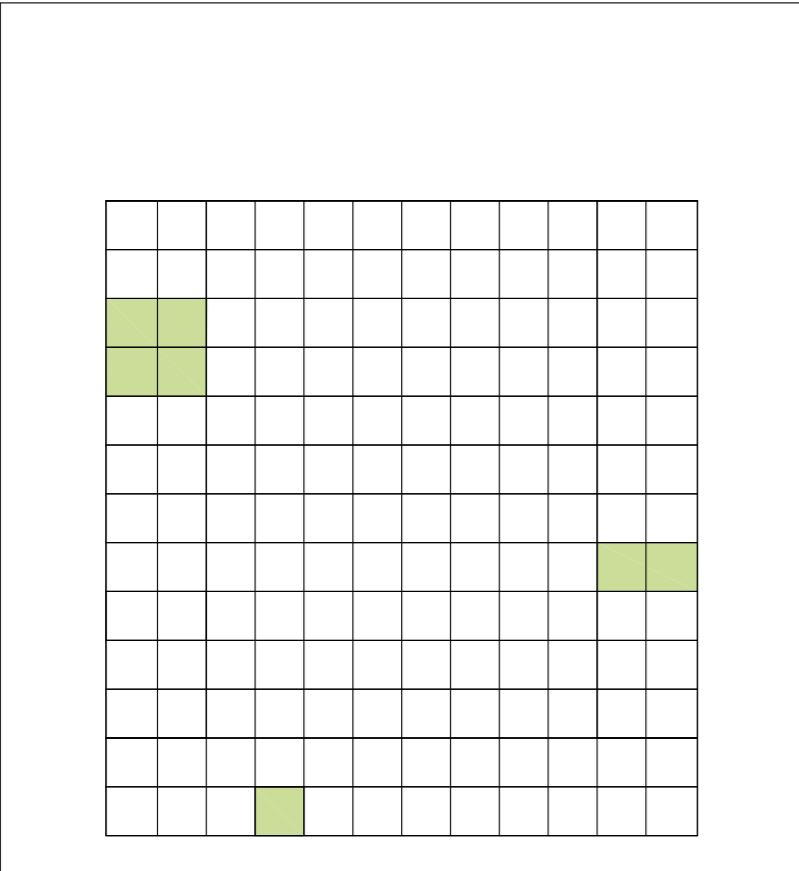


FAUUSP, Sao Paulo, Brasil, Joao Vilanova Artigas.

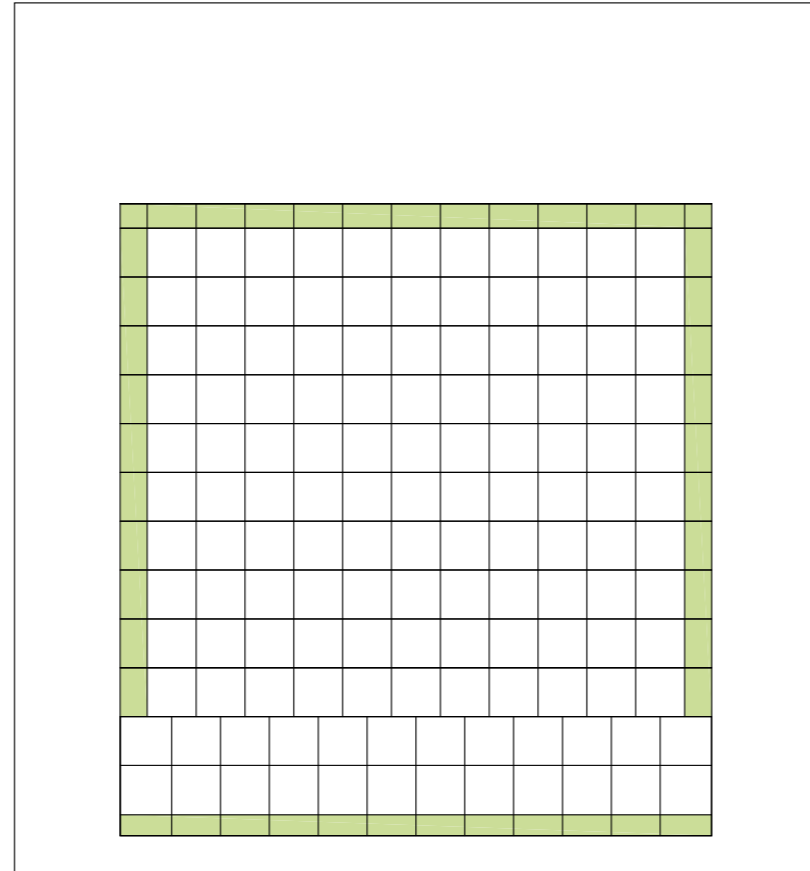


RETÍCULA:
paso=5,78m

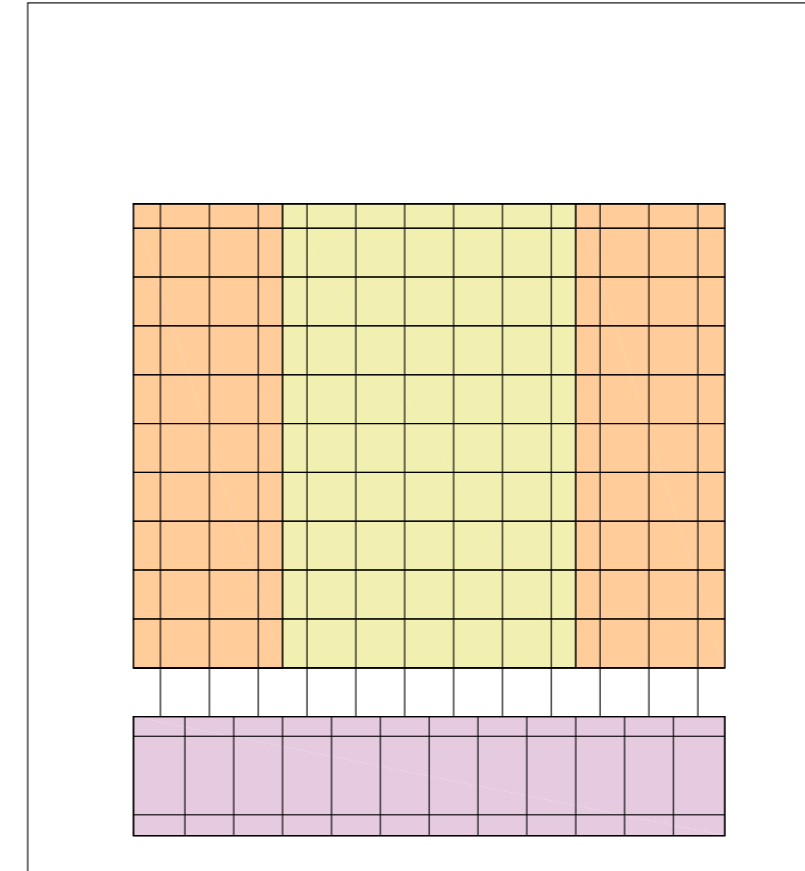
1U=2 despachos
2U=seminario
4U=aula



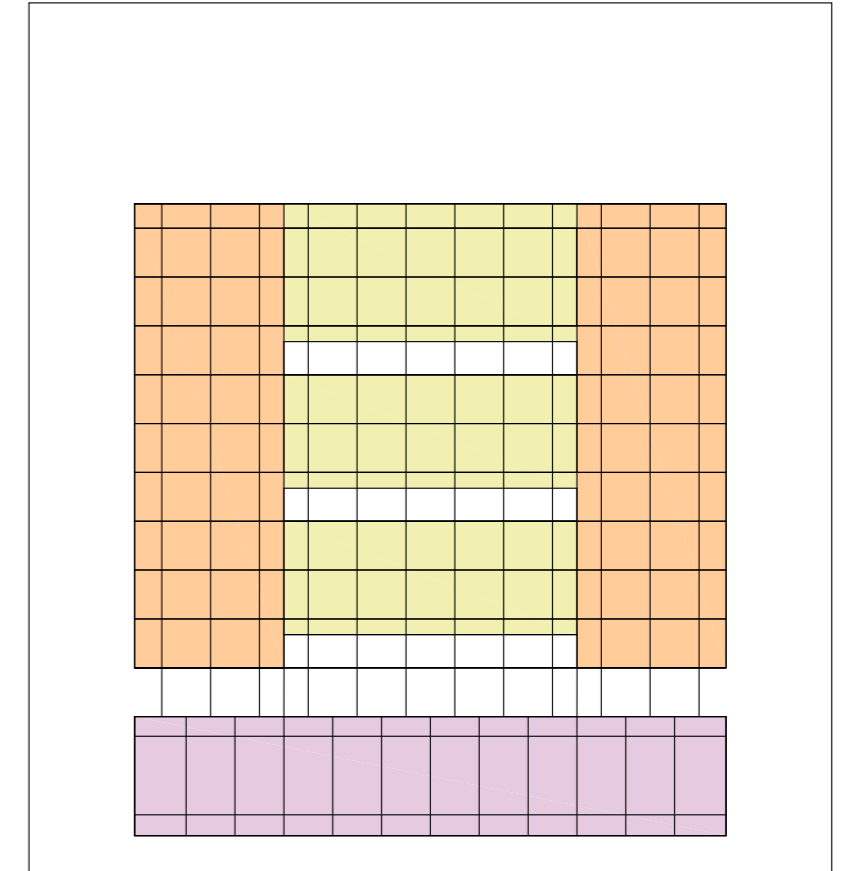
DESPLAZAMIENTO RETÍCULA:
VOLADIZO = SOMBRA = FLOTABILIDAD =
= ESPACIO INTERMEDIO



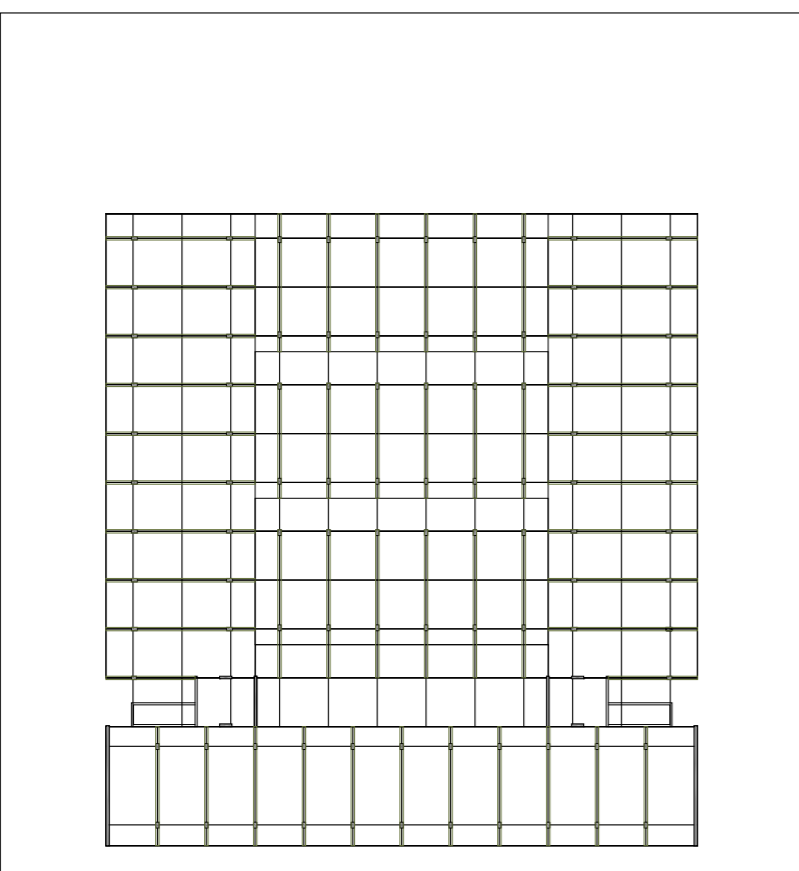
PROGRAMA:
PATIO DOCENTE



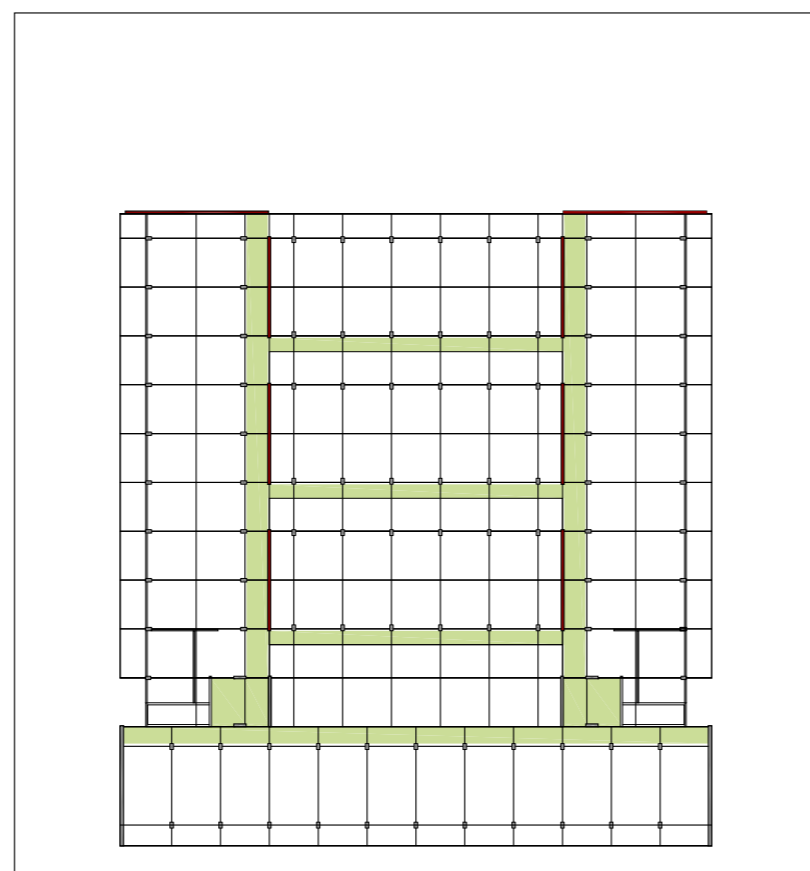
ILUMINACIÓN CAMPUS:
PATIO COMO LUZ



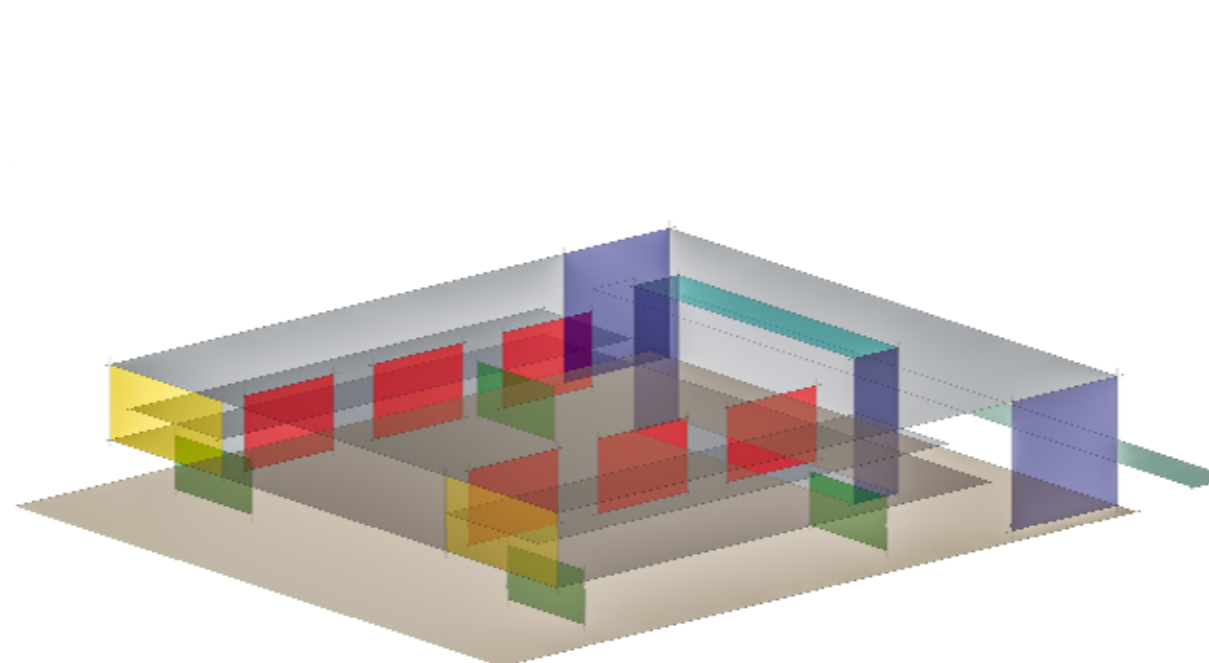
ESTRUCTURA



CIRCULACIONES



CERRAMIENTOS - PLANOS



PARTICIONES: PARED ARMARIO

