

# PROYECTO DE **10 VIVIENDAS** EN **SAN ANTONIO DE BENAGÉBER**

---

DOCUMENTACIÓN TÉCNICA: PLANOS

Febrero 2016

**RASISA S.L.**

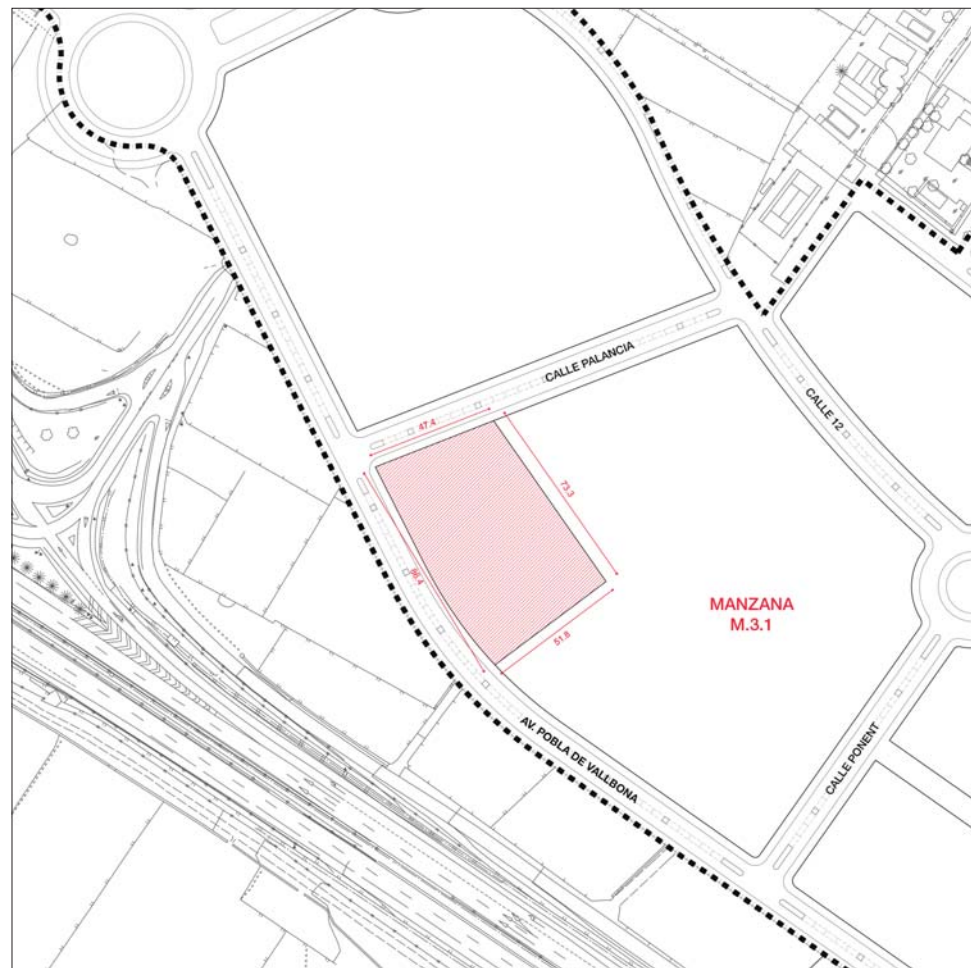
**SGS**

**gimeno**  
construcción

**PEÑÍN** ARQUITECTOS



1 / 10.000



1 / 2.000







	Sup. de parcela	Sup. ajardinada
1.	203,00 m <sup>2</sup>	60,90 m <sup>2</sup>
2.	203,00 m <sup>2</sup>	60,90 m <sup>2</sup>
3.	203,00 m <sup>2</sup>	60,90 m <sup>2</sup>
4.	203,00 m <sup>2</sup>	60,90 m <sup>2</sup>
5.	174,00 m <sup>2</sup>	41,80 m <sup>2</sup>
6.	205,60 m <sup>2</sup>	31,30 m <sup>2</sup>
7.	205,60 m <sup>2</sup>	31,30 m <sup>2</sup>
8.	205,60 m <sup>2</sup>	31,30 m <sup>2</sup>
9.	205,60 m <sup>2</sup>	31,30 m <sup>2</sup>
10.	162,40 m <sup>2</sup>	31,00 m <sup>2</sup>
11.	2.120,02 m <sup>2</sup>	1.158,10 m <sup>2</sup> > 50%
<b>TOTAL</b>	<b>4.091 m<sup>2</sup></b>	





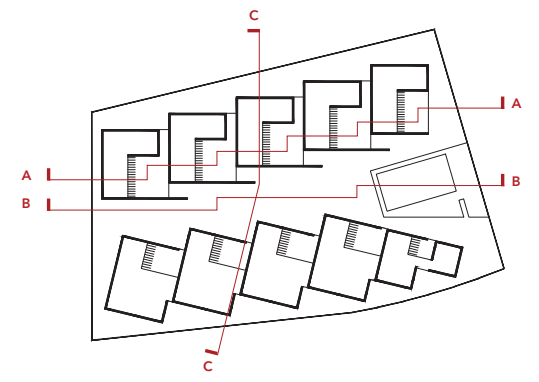
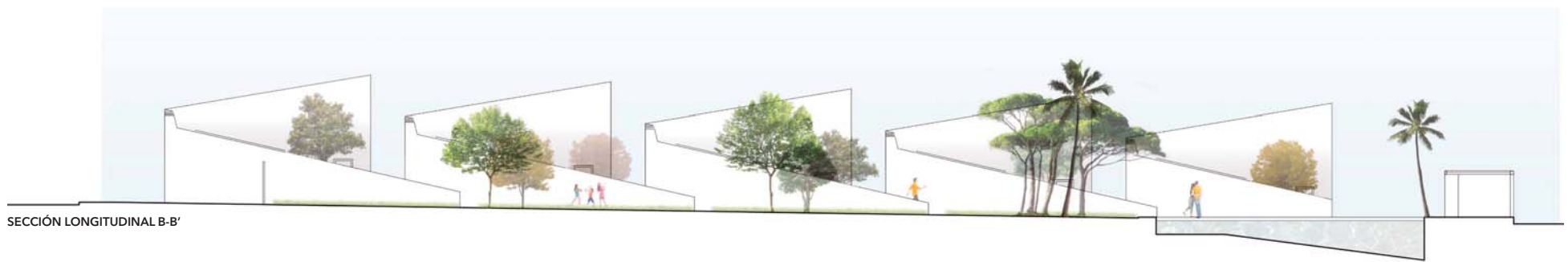
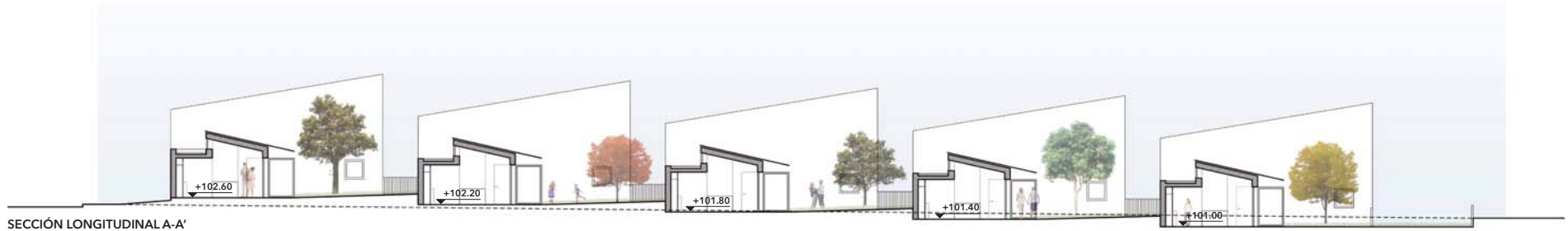
CALLE PALANCIA



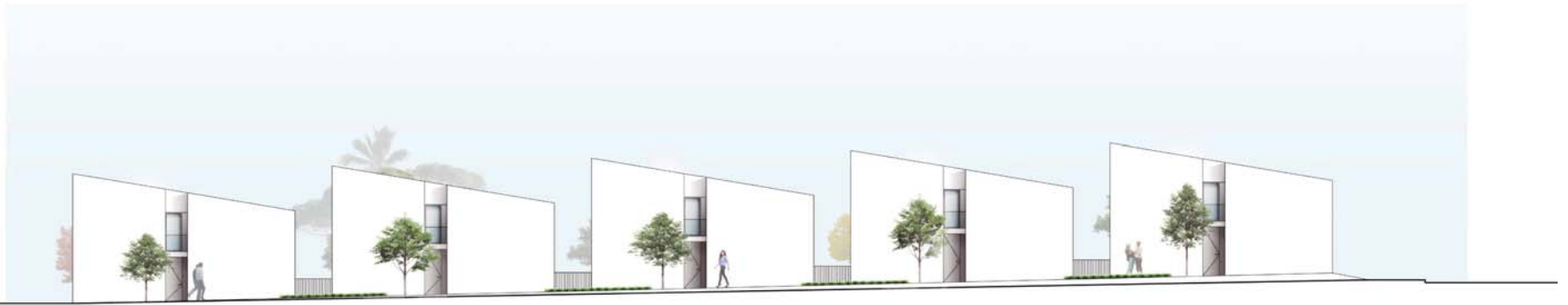
AV. POBLA DE VALLBONA











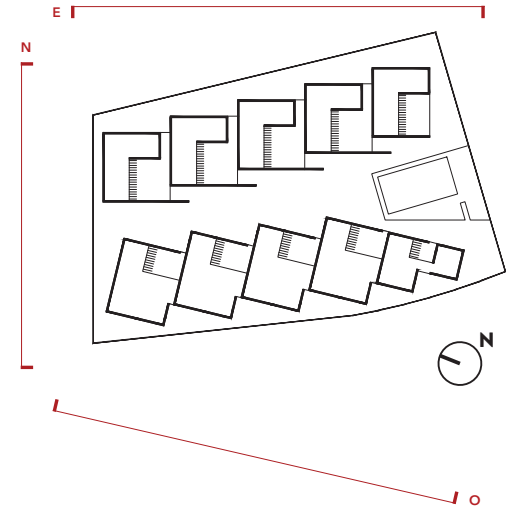
ALZADO ESTE DESDE VIAL INTERIOR

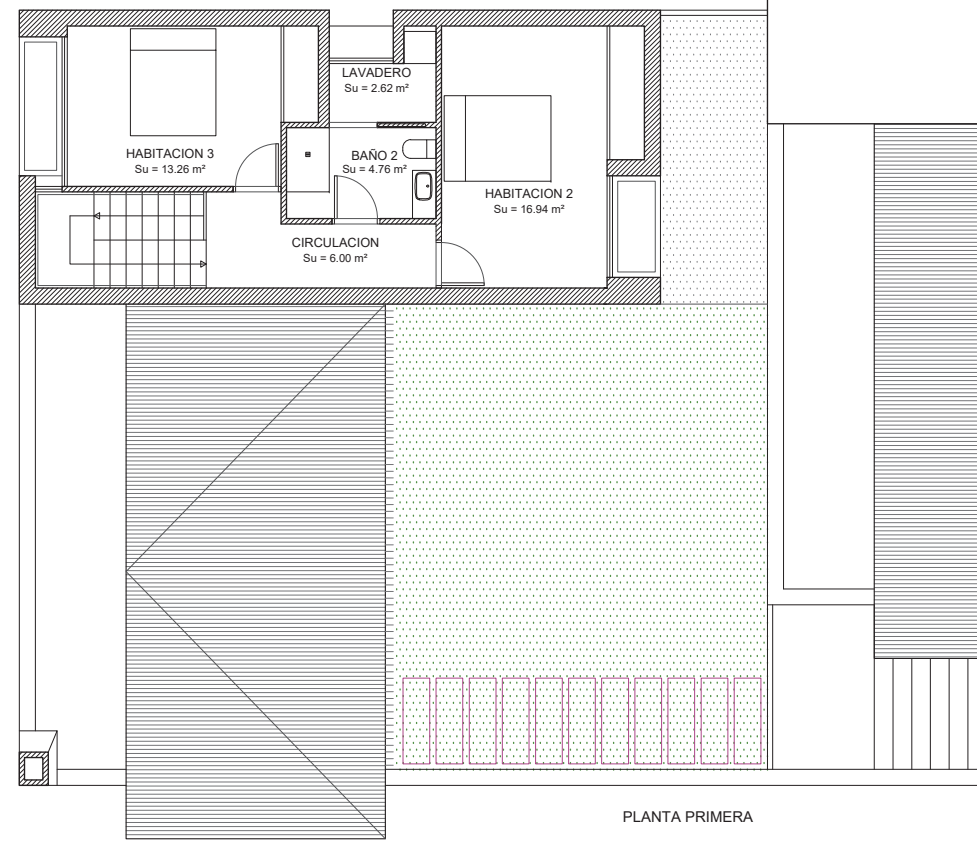
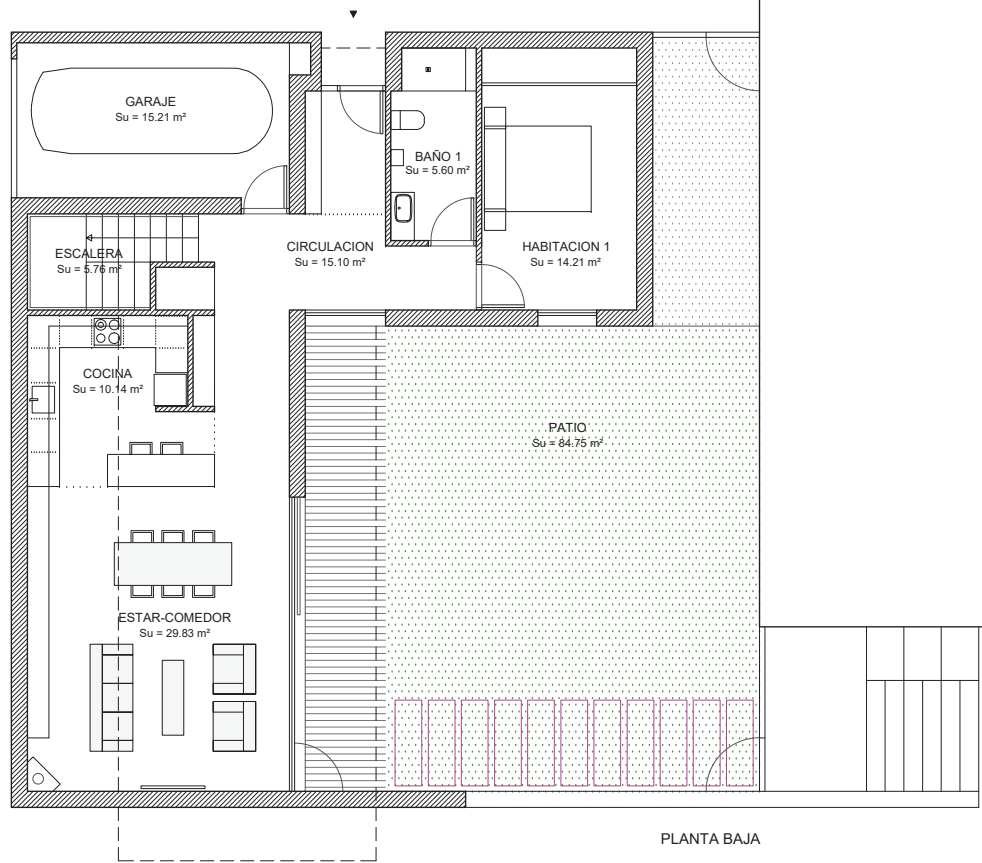


ALZADO NORTE DESDE AV. POBLA DE VALLBONA

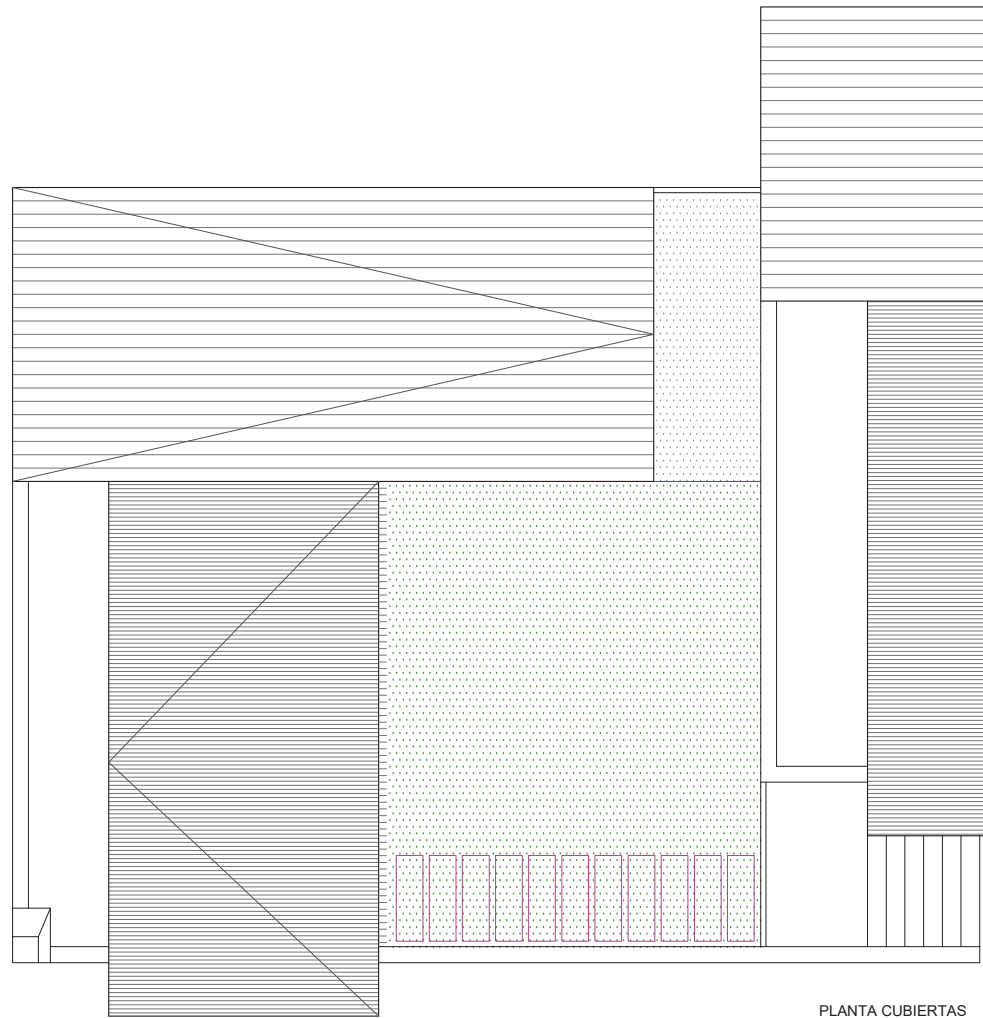


ALZADO NORTE DESDE CALLE PALANCIA



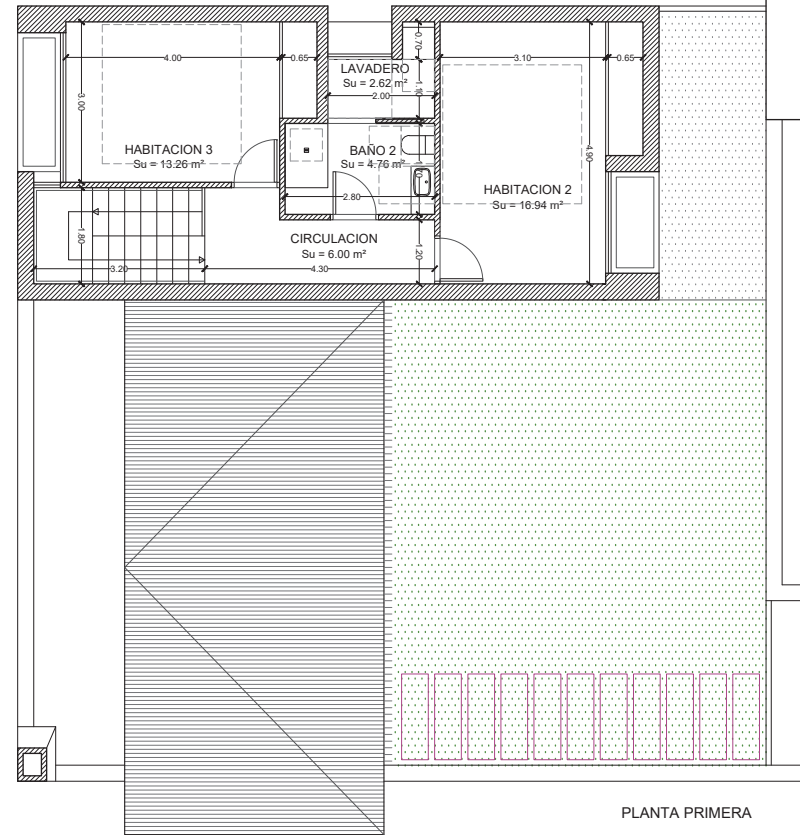
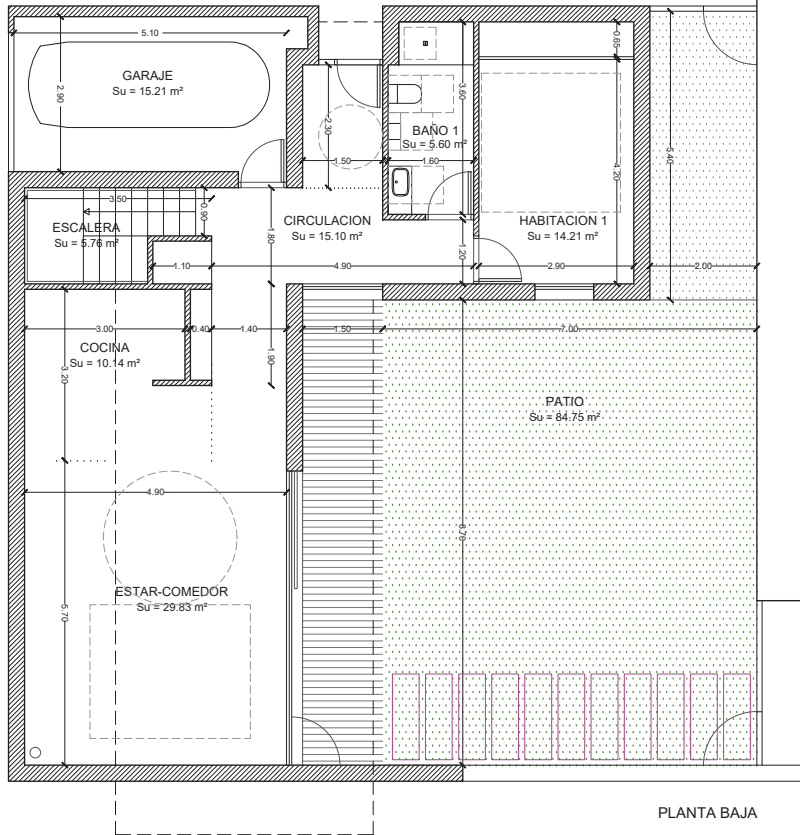






PLANTA CUBIERTAS



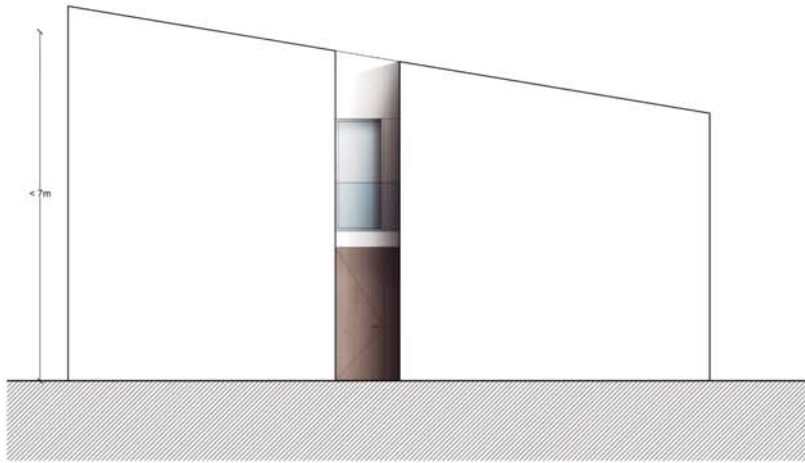


SUPERFICIE UTIL (m <sup>2</sup> )	
<b>Vivienda Tipo A</b>	
<b>Planta Baja</b>	
Estar-comedor	29,83
Cocina	10,14
Habitación 1	14,21
Baño 1	5,60
Circulación	15,10
Escalera	5,76
Garaje	15,21
<b>Planta Primera</b>	
Habitación 2	16,94
Habitación 3	13,19
Baño 2	5,04
Lavadero	2,42
Circulación	6,00
<b>Total</b>	<b>139,44</b>
<b>Patio</b>	<b>84,75</b>

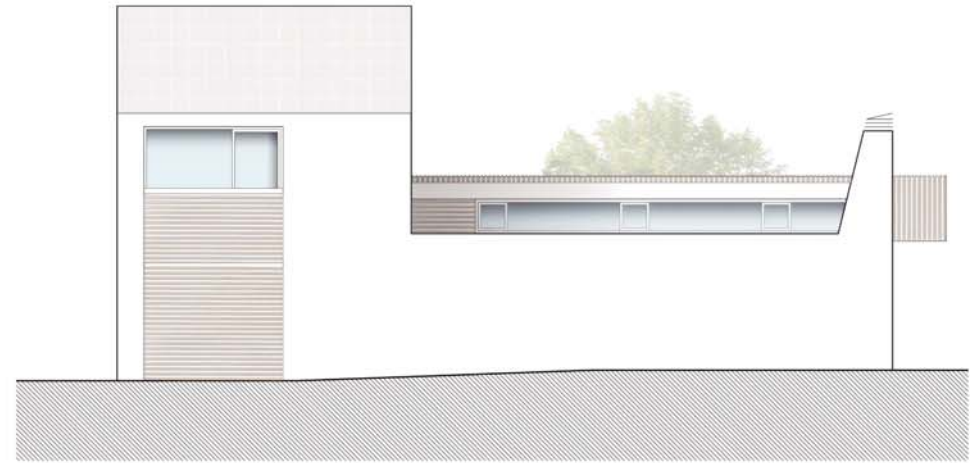
SE INCORPORAN FIGURAS INSCRIBIBLES DE NORMATIVA DE HABITABILIDAD DC/09



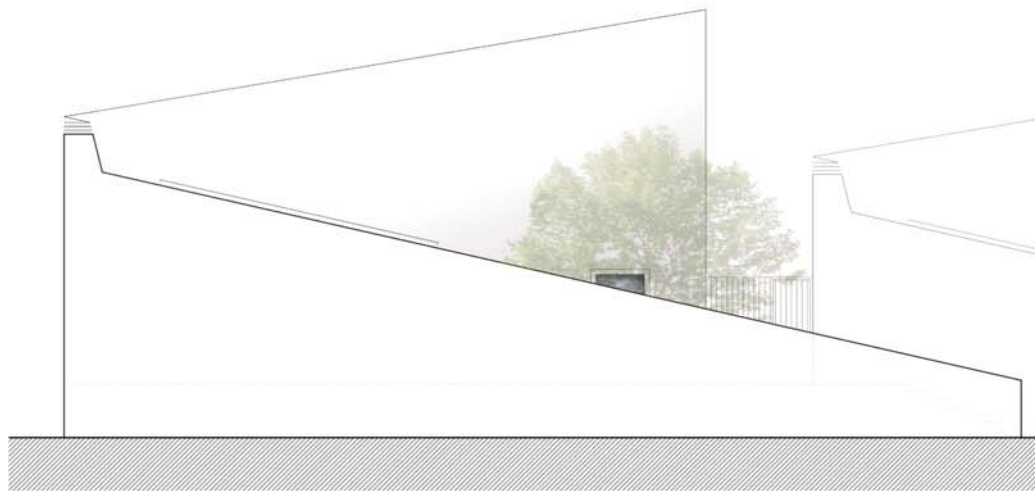




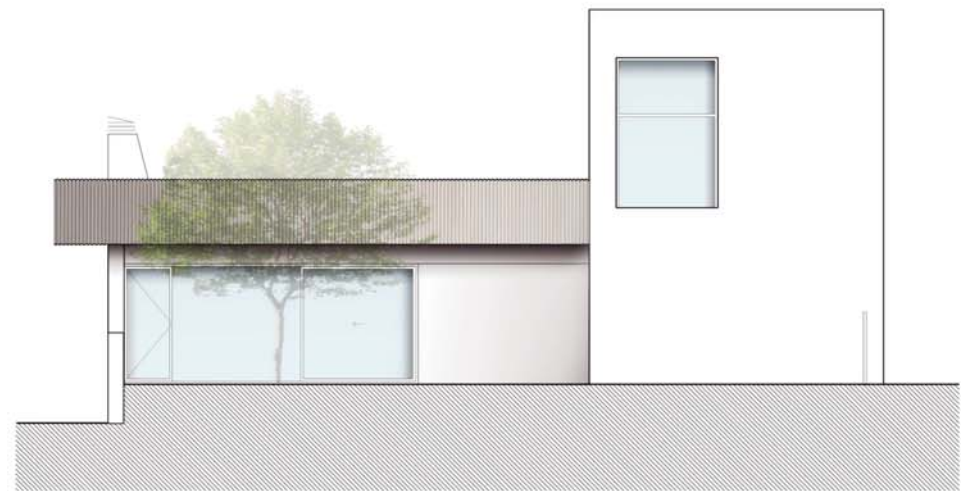
ALZADO NORESTE



ALZADO NOROESTE

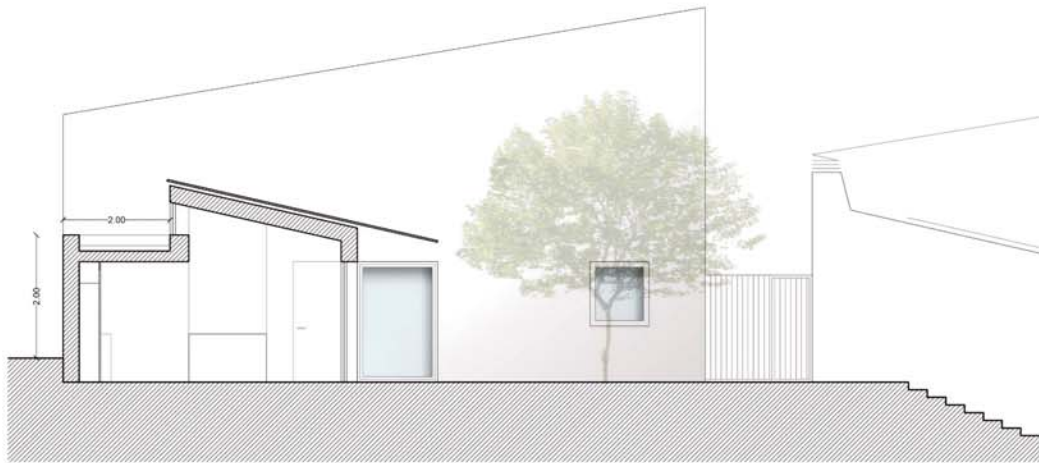


ALZADO SUROESTE A ZONA COMUNITARIA

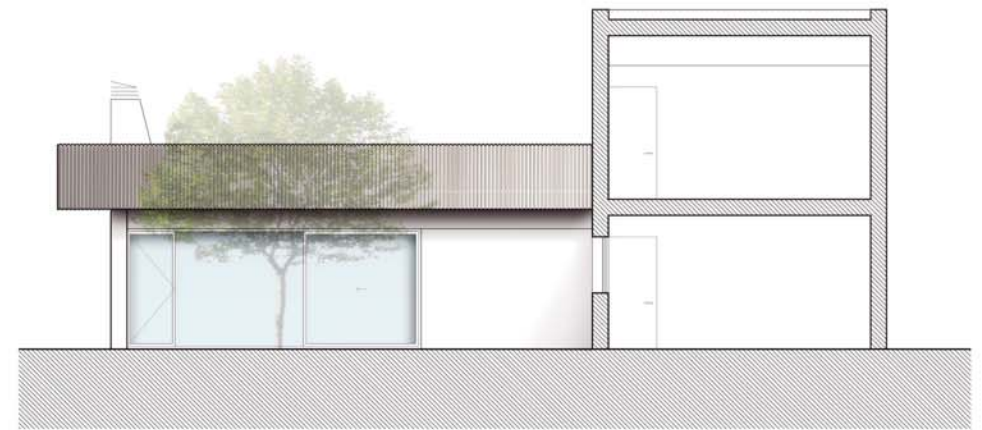


ALZADO SURESTE A PATIO

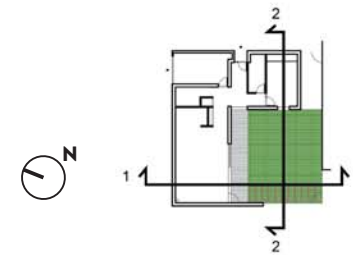




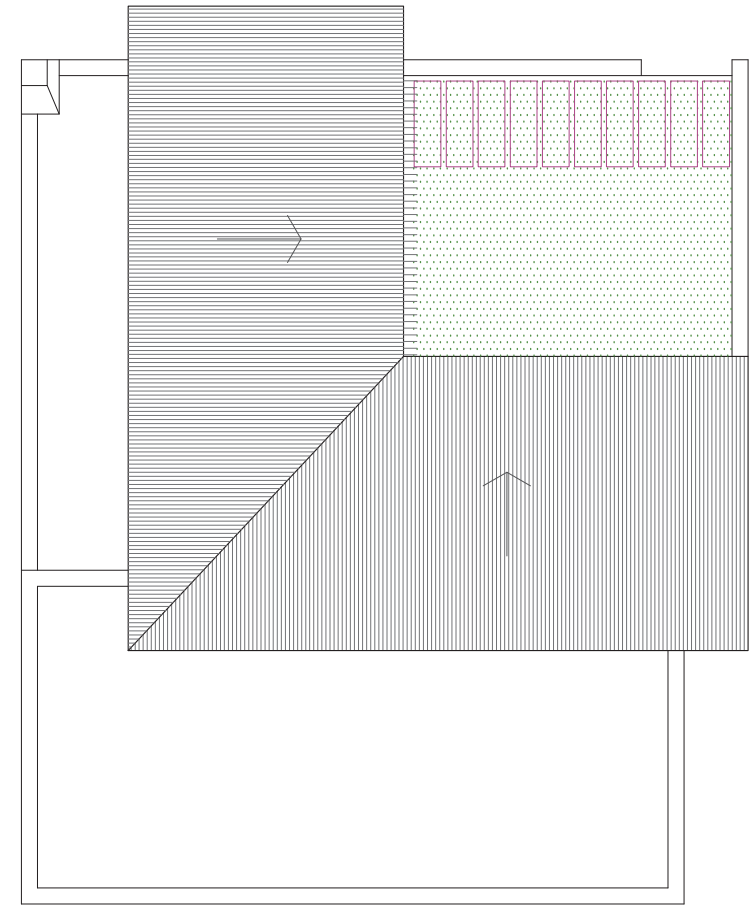
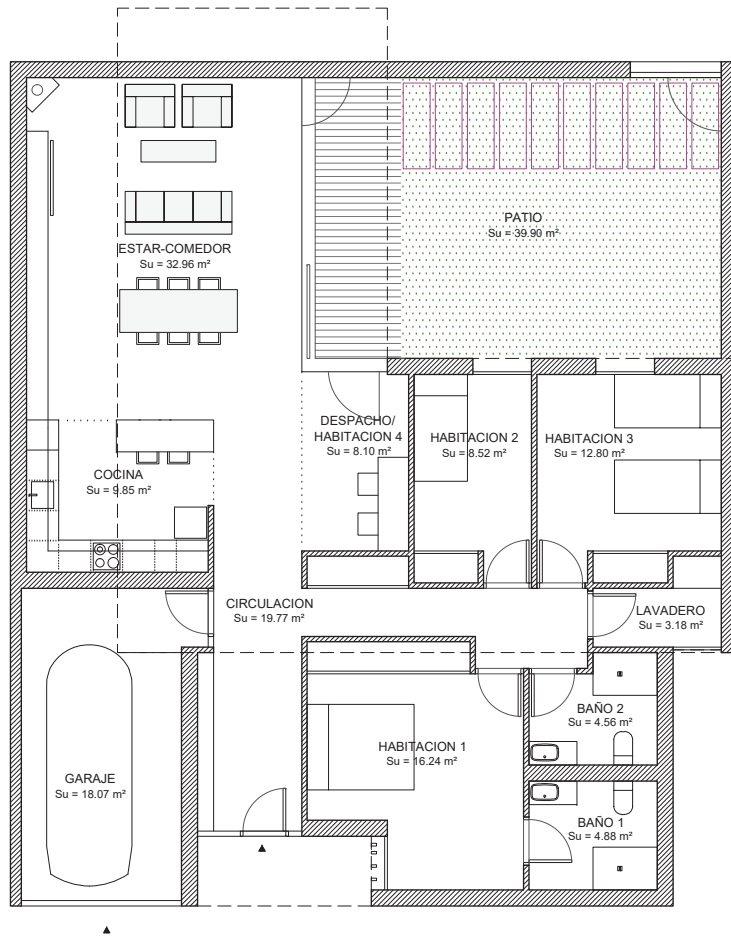
SECCION 1



SECCION 2

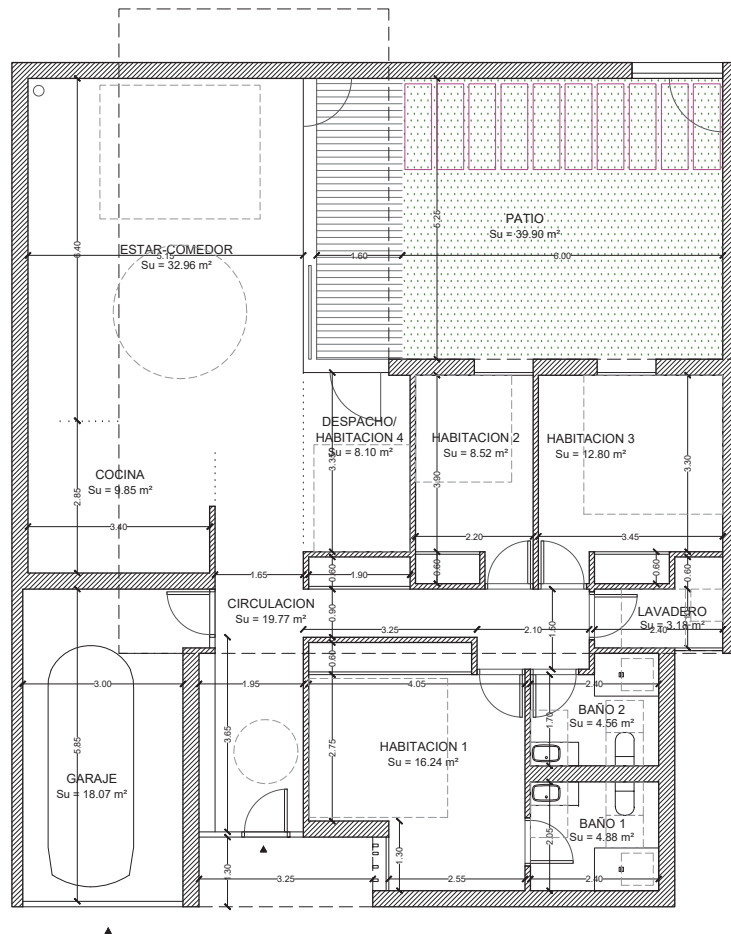






PLANTA CUBIERTAS

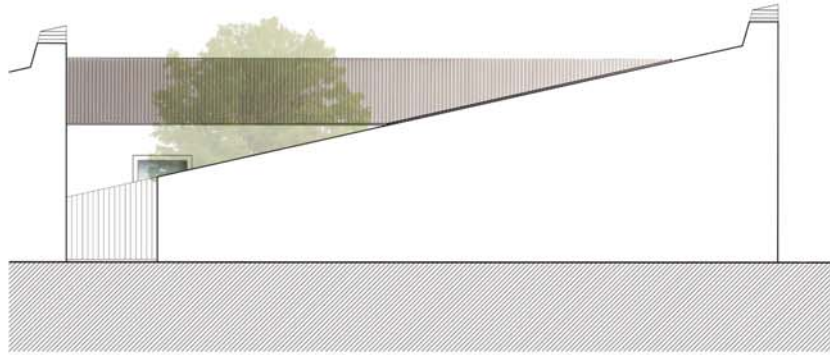




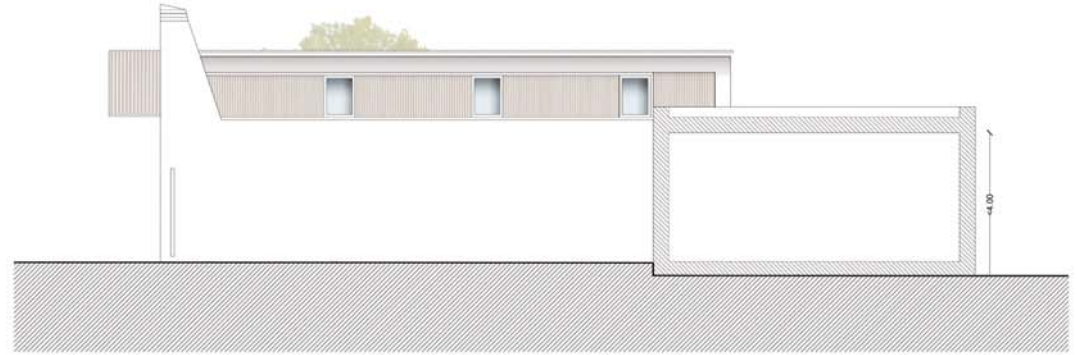
SUPERFICIE UTIL (m²)	
Vivienda Tipo B	
Estar-comedor	32,96
Cocina	9,85
Habitación 1	16,24
Baño 1	4,88
Baño 2	4,56
Circulación	19,77
Habitación 2	8,58
Habitación 3	12,80
Despacho	8,10
Lavadero	3,18
Garaje	18,07
<b>Total</b>	<b>138,99</b>
Patio	39,90

SE INCORPORAN FIGURAS  
INSCRIBIBLES DE NORMATIVA  
DE HABITABILIDAD DC/09

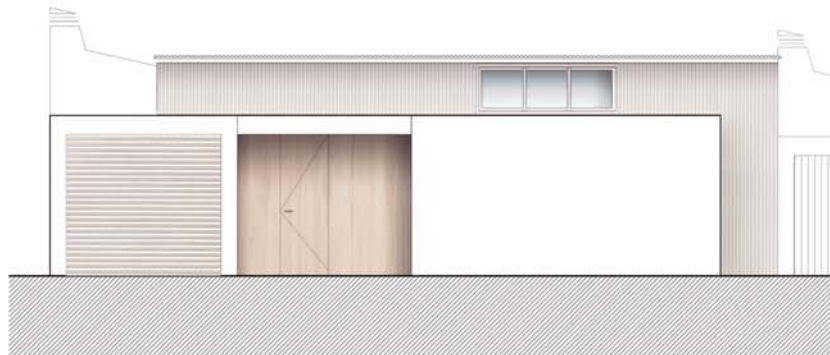




ALZADO ESTE A ZONA COMUNITARIA

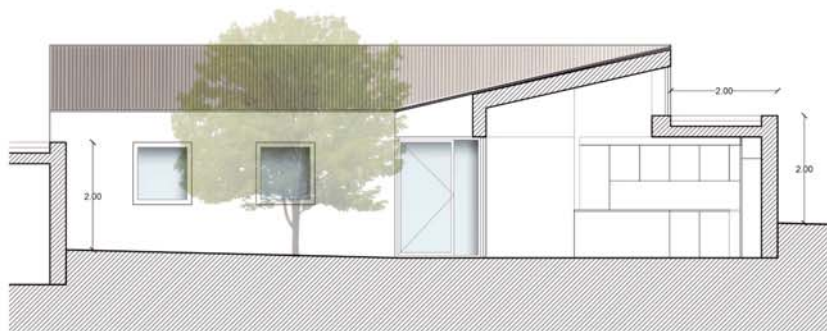


ALZADO SECCION NORTE

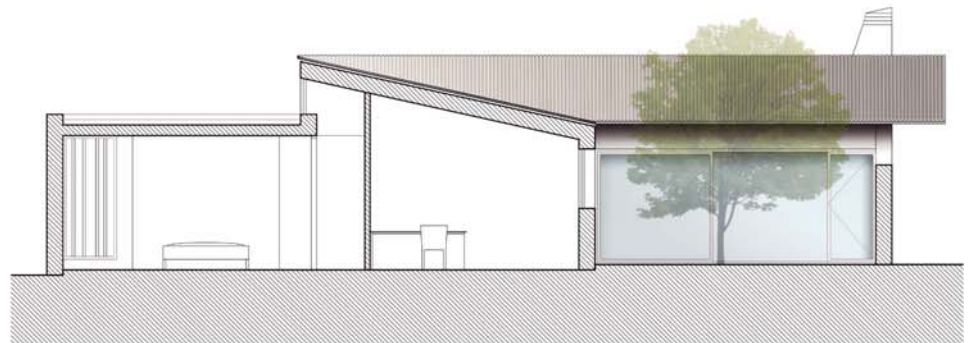


ALZADO OESTE A VIAL

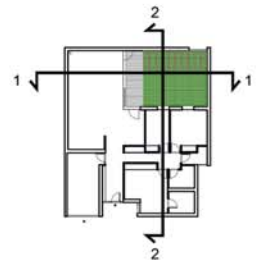


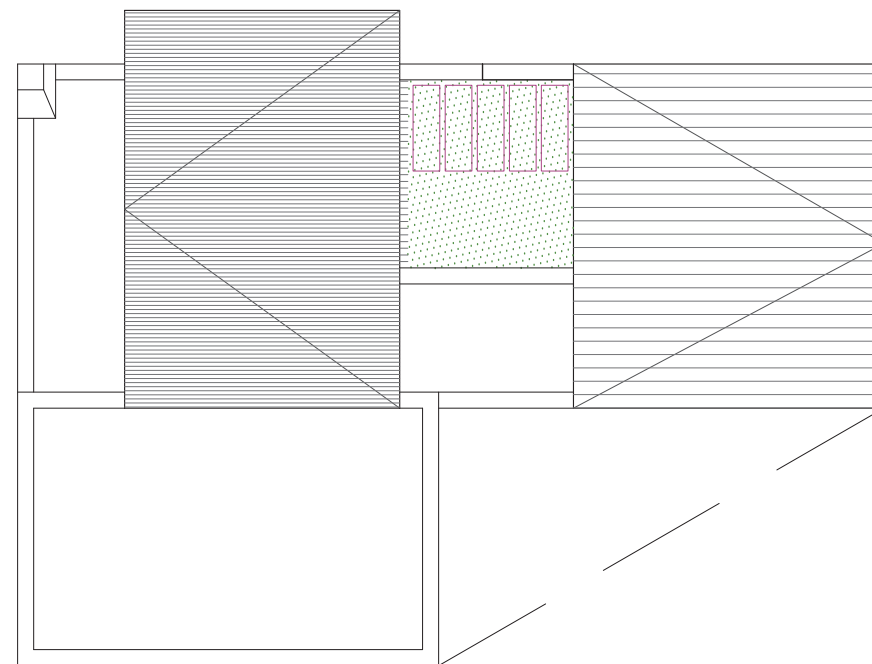
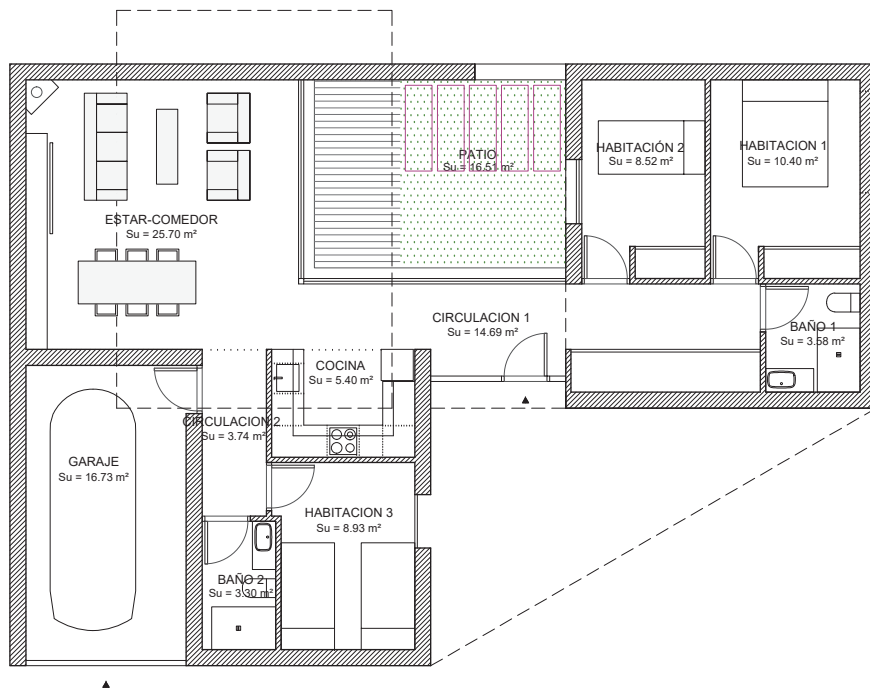


SECCION 1



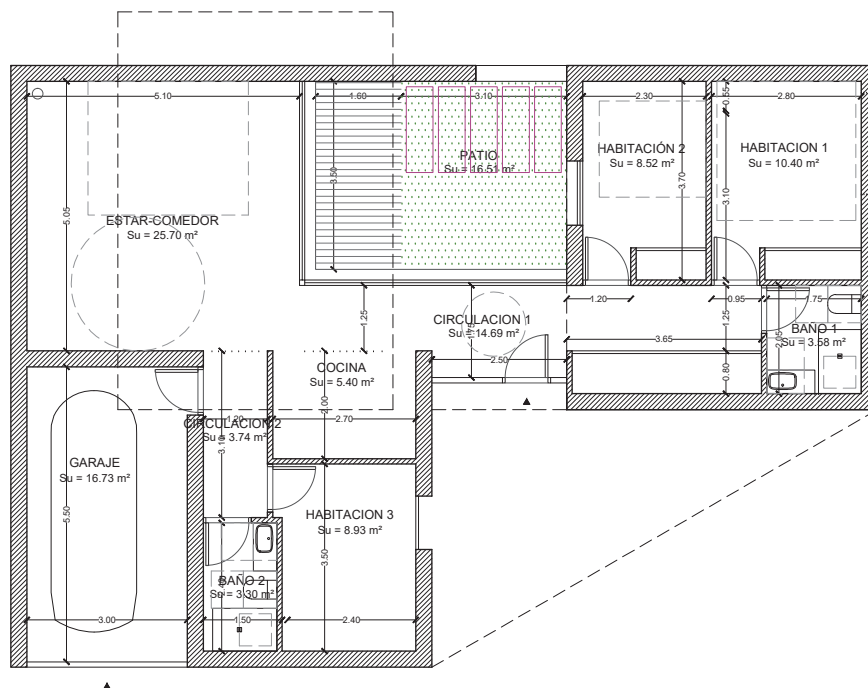
SECCION 2





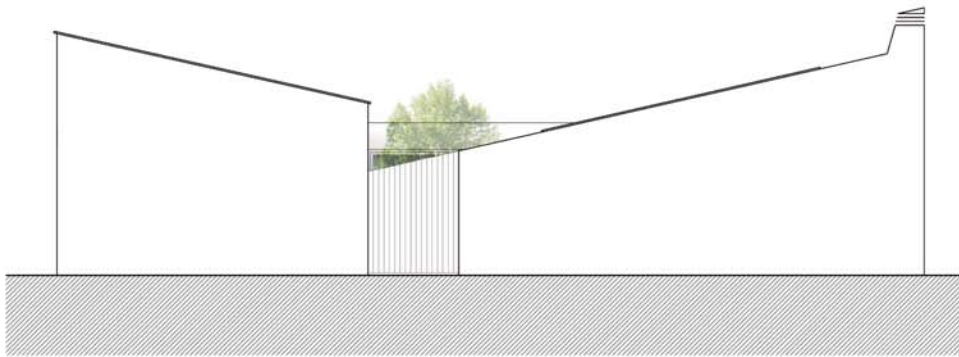
PLANTA CUBIERTAS



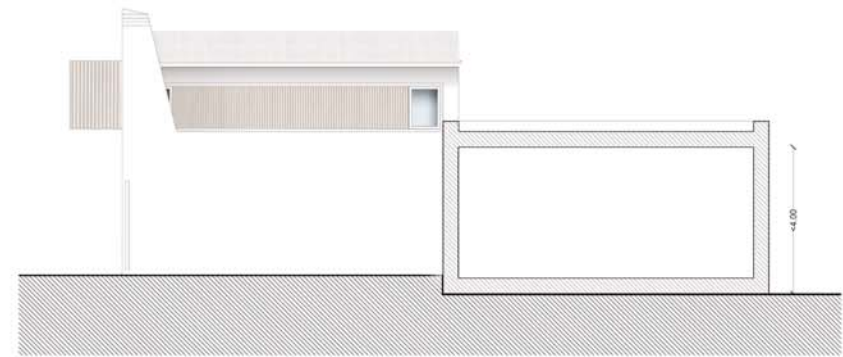


SUPERFICIE UTIL (m²)	
<b>Vivienda Tipo B</b>	
Estar-comedor	25,70
Cocina	5,40
Habitación 1	10,40
Habitación 2	8,52
Baño 1	3,58
Circulación 1	14,69
Garaje	16,73
Circulación 2	3,74
Habitación 3	8,93
Baño 2	3,30
<b>Total</b>	<b>100,99</b>
Patio	16,51

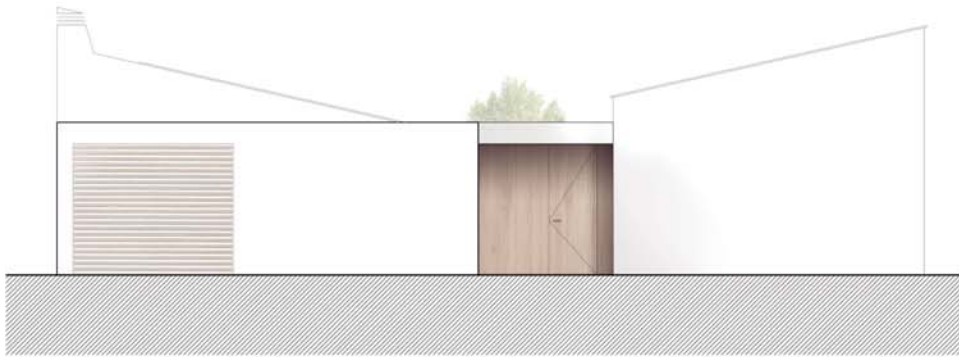
SE INCORPORAN FIGURAS INSCRIBIBLES DE NORMATIVA DE HABITABILIDAD DC/09



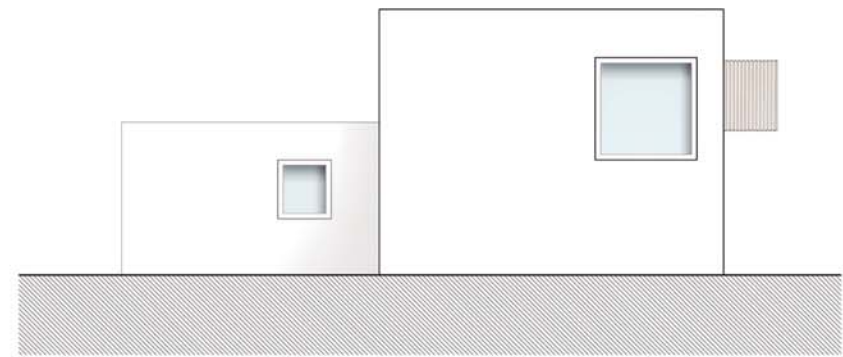
ALZADO OESTE



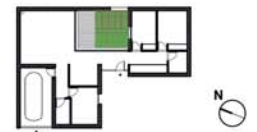
ALZADO NORTE

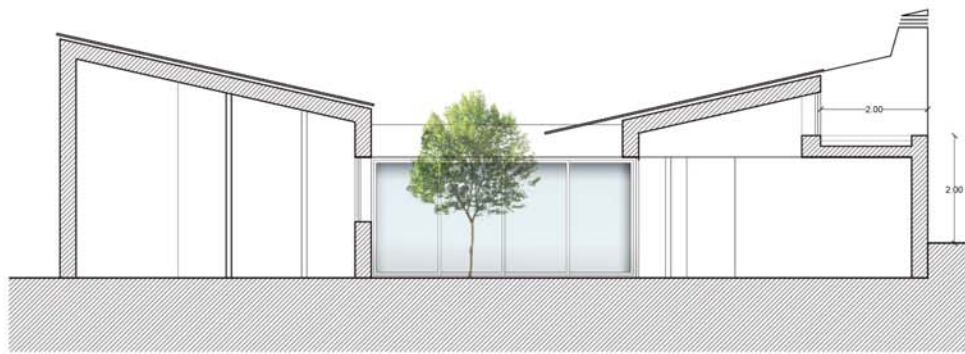


ALZADO ESTE

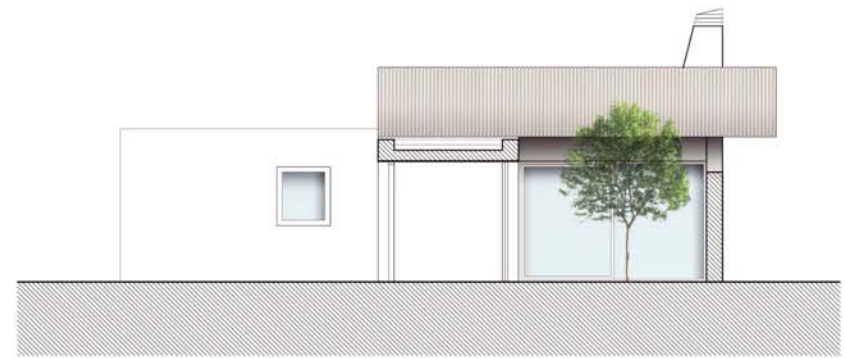


ALZADO SUR

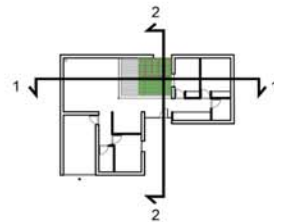




SECCION 1

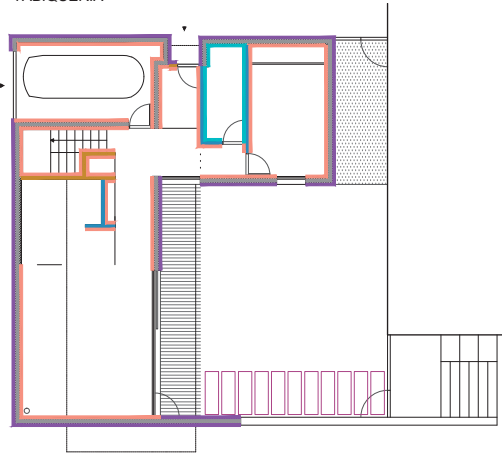


SECCION 2



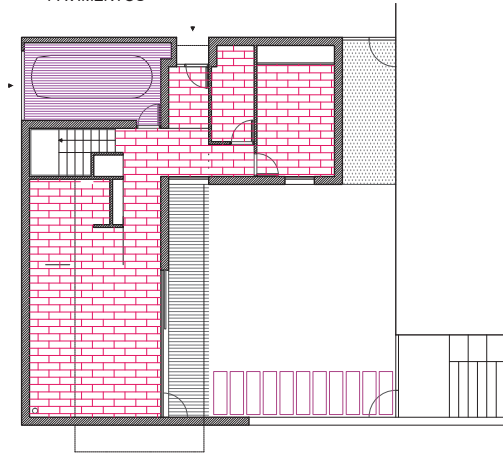


TABQUERIA



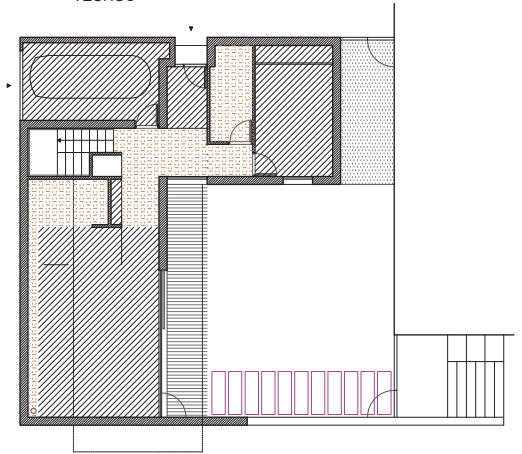
PLANTA BAJA

PAVIMENTOS

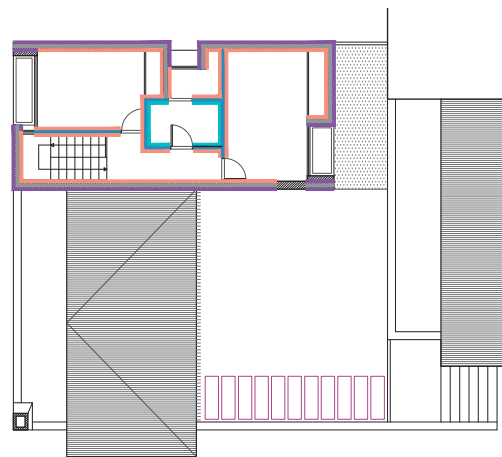


PLANTA BAJA

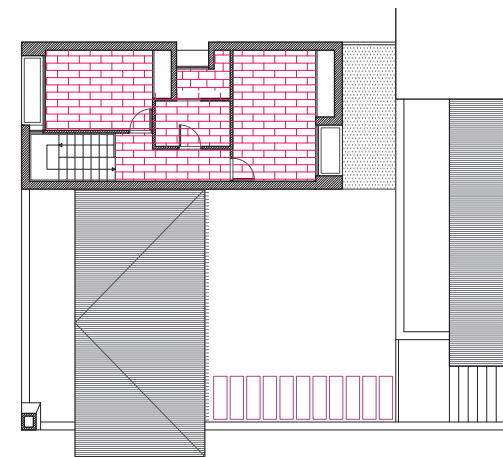
TECHOS



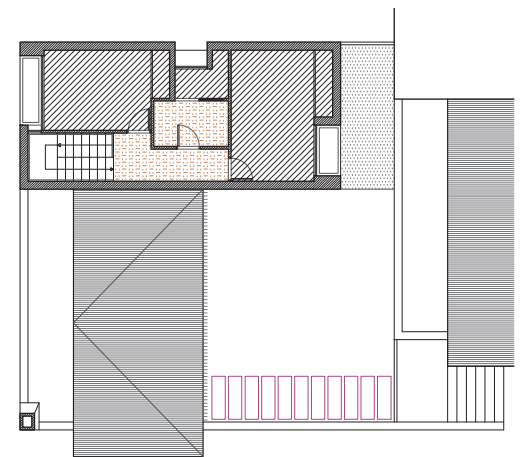
PLANTA BAJA









PLANTA PRIMERA







PLANTA PRIMERA



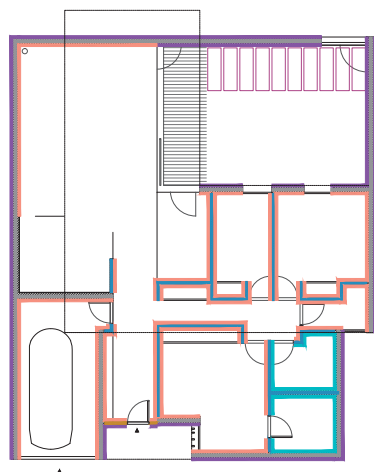
PLANTA PRIMERA

-  Fábrica de ladrillo panal y aislante térmico
-  Trasdoso de pladur
-  Fábrica de ladrillo cerámico hueco
-  Enfoscado y pintado
-  Pintura plástica acrílica, traspirable y impermeable, con acabado color blanco
-  Gres porcelánico no esmaltado monocolor de 15x15 cm

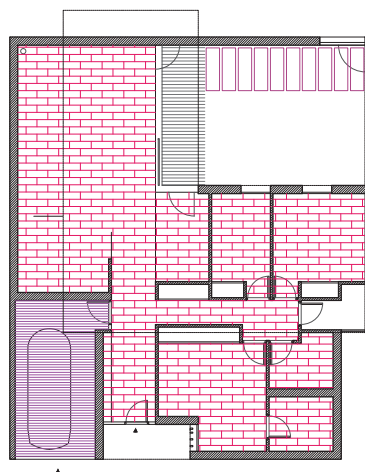
-  Baldosa de gres Porcelánico 60 x 30 cm
-  Solera

-  Falso techo continuo formado con placas de yeso laminado
-  Guarnecido y pintado

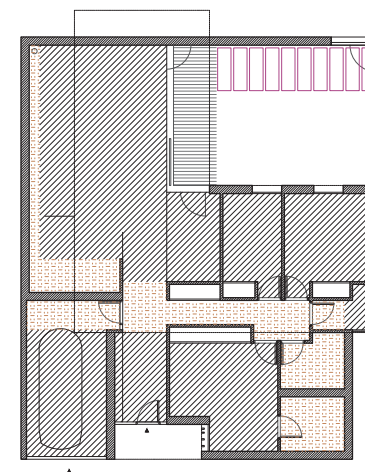
TABIQERIA











PAVIMENTOS





TECHOS

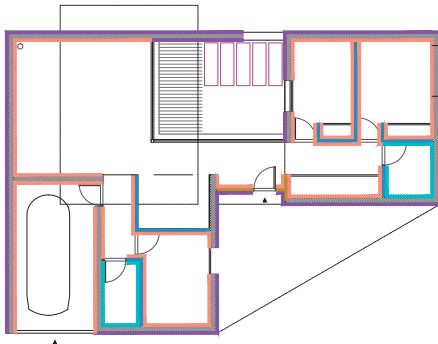


-  Fábrica de ladrillo panel y aislante térmico
-  Trasdoso de pladur
-  Fábrica de ladrillo cerámico hueco
-  Enfoscado y pintado
-  Pintura plástica acrílica, traspirable y impermeable, con acabado color blanco
-  Gres porcelánico no esmaltado monocolor de 15x15 cm

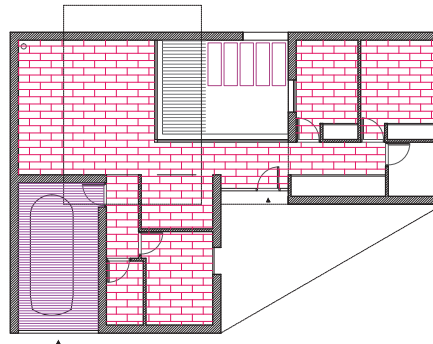
-  Baldosa de gres Porcelánico 60 x 30 cm
-  Solera

-  Falso techo continuo formado con placas de yeso laminado
-  Guarnecido y pintado

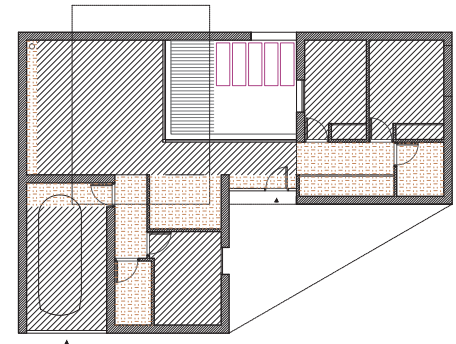
TABIQUERIA

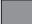









PAVIMENTOS





TECHOS



-  Fábrica de ladrillo panel y aislante térmico
-  Trasdoso de pladur
-  Fábrica de ladrillo cerámico hueco
-  Enfoscado y pintado
-  Pintura plástica acrílica, traspirable y impermeable, con acabado color blanco
-  Gres porcelánico no esmaltado monocolor de 15x15 cm

-  Baldosa de gres Porcelánico 60 x 30 cm
-  Solera

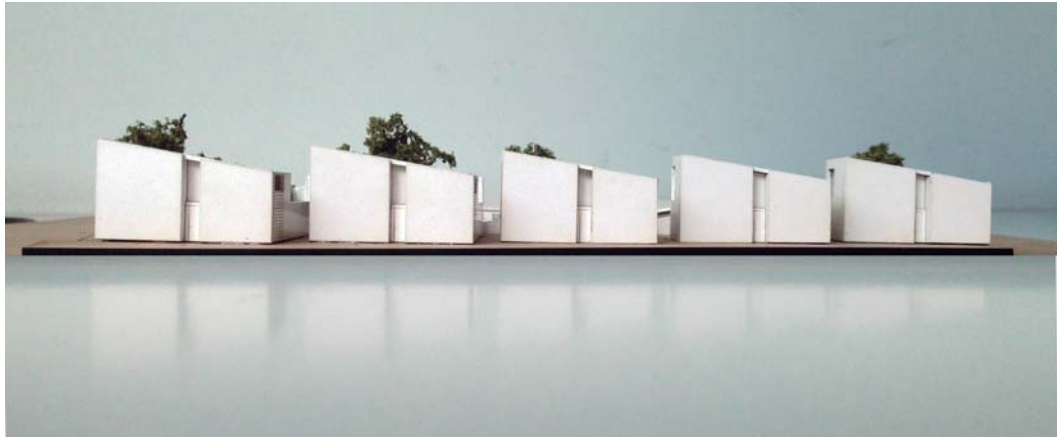
-  Falso techo continuo formado con placas de yeso laminado
-  Guarnecido y pintado





CONCURSO PARA PROMOCIÓN Y CONSTRUCCIÓN DE 10 VIVIENDAS EN S. MONTE SANO. SAN ANTONIO DE BENAGÉBER  
RASISA SL - GRUPO GIMENO - PEÑÍN ARQUITECTOS - FEBRERO 2016













**gimeno**  
construcción

**PEÑÍN** ARQUITECTOS