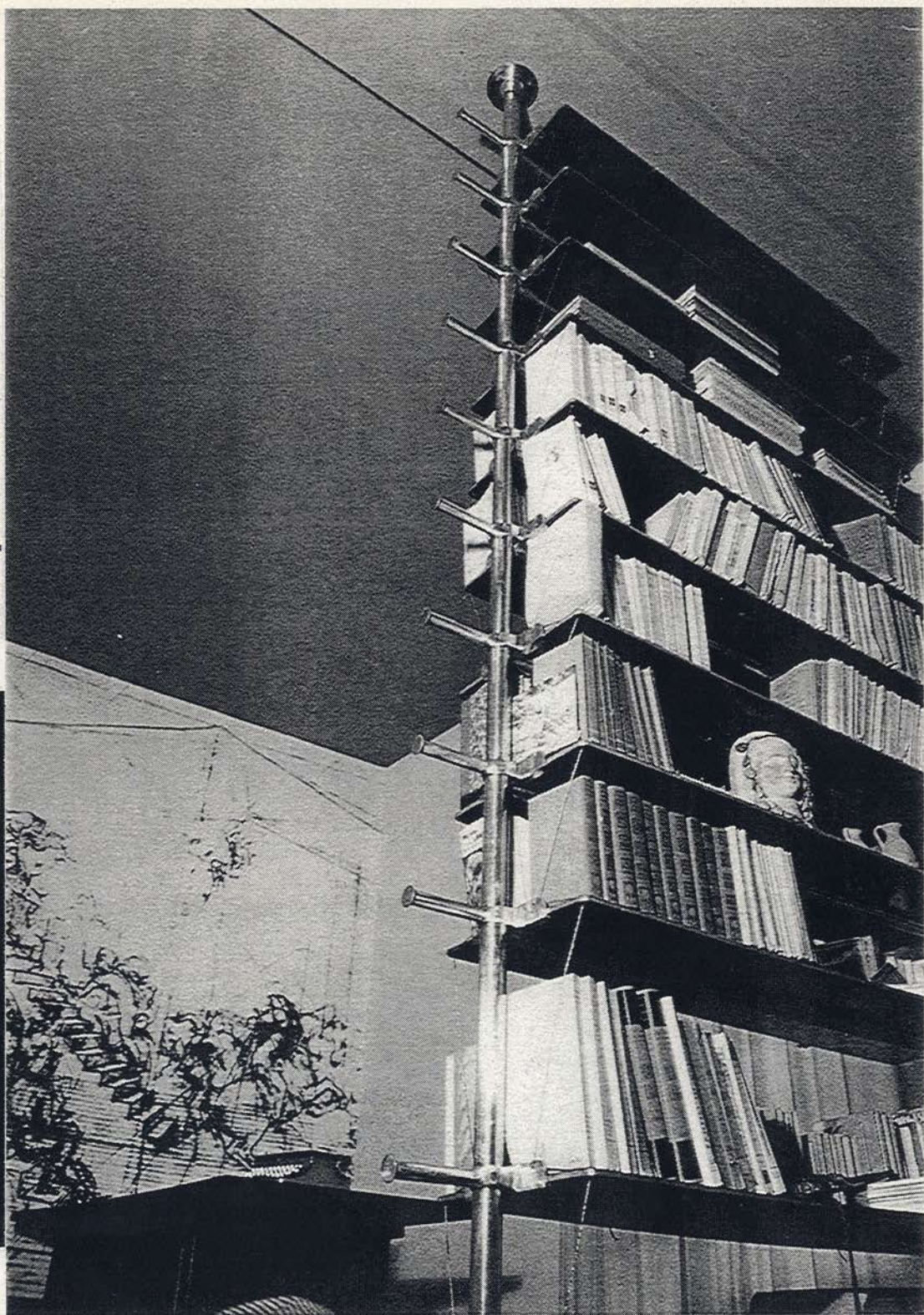
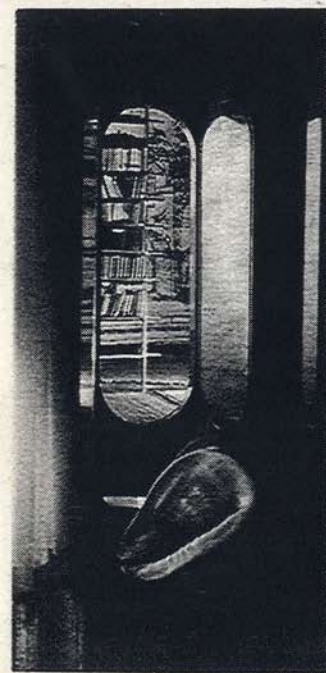
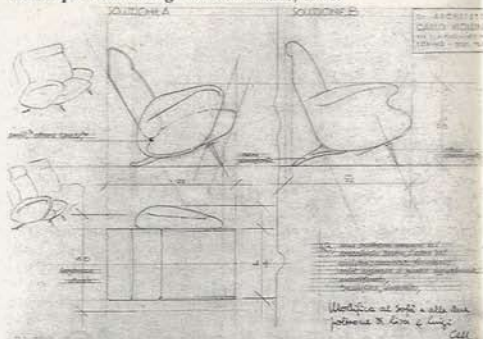


M O B I L I A R I

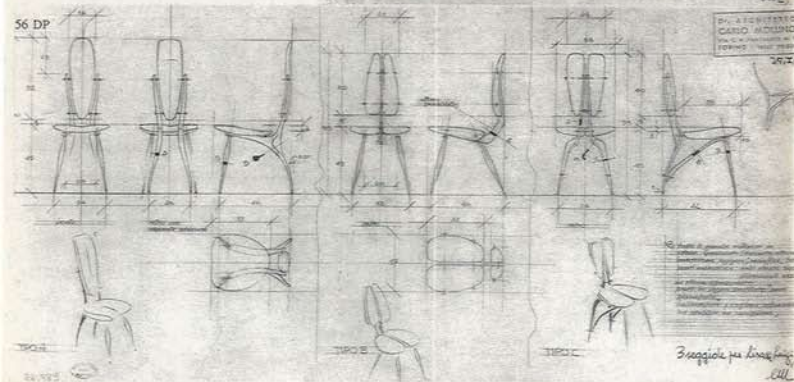
Casa per Ezio D'Errico. Torino, 1937.

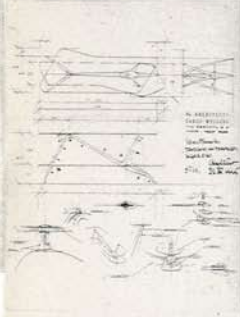
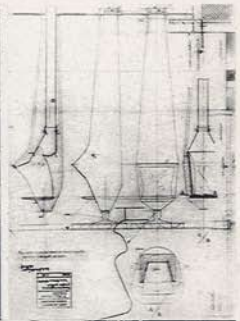
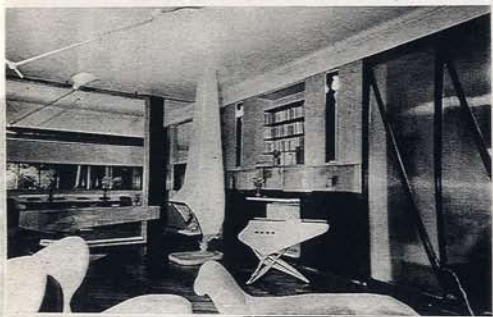


Mobili per Lisa e Luigi Licitra. Milano, 1940.



Casa per Ada e Cesare Minola, via Perrone, 4. Torino, 1944-46.

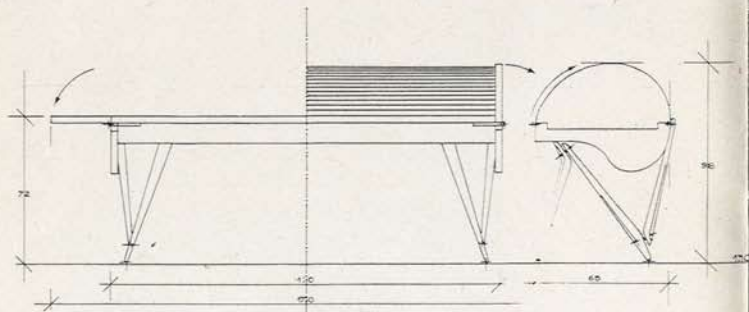




Alloggio Mollino, 1946.

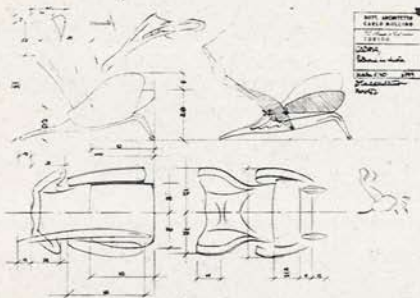


60 DP

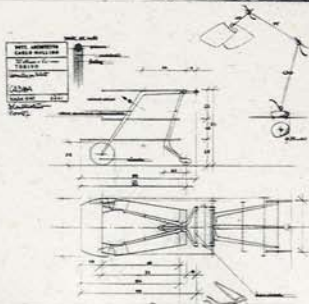


61 D

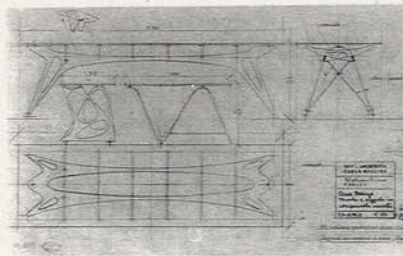
Mobili per la Cadma, 1947.



62 DP



63 D

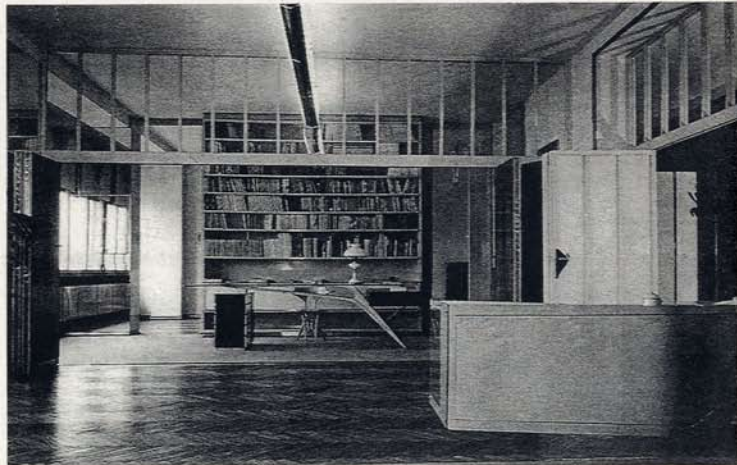


Tecnica di curvatura del compensato.

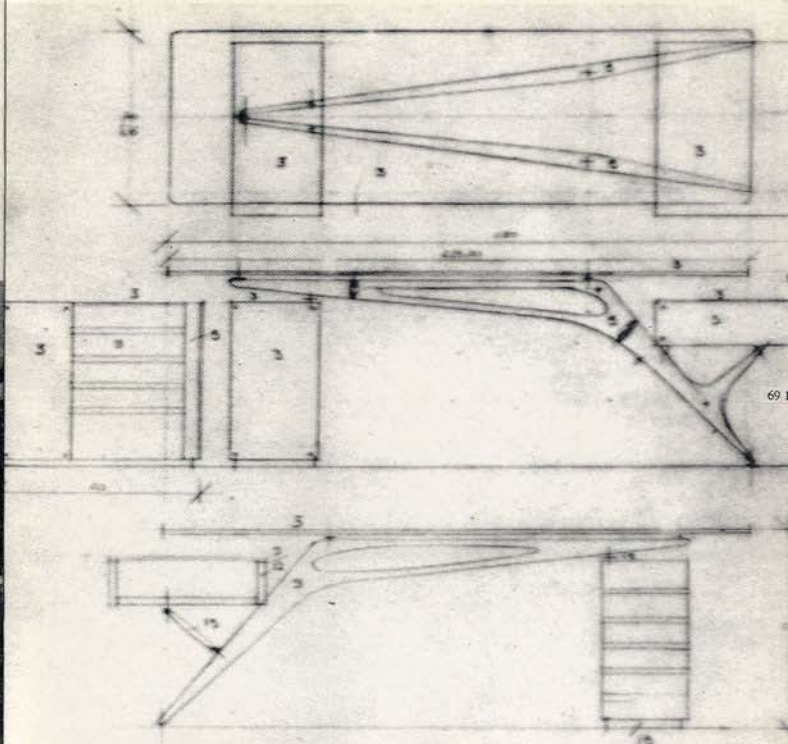




Casa Orengo tra Corso Cairoli e via Cavour. Torino, 1949.

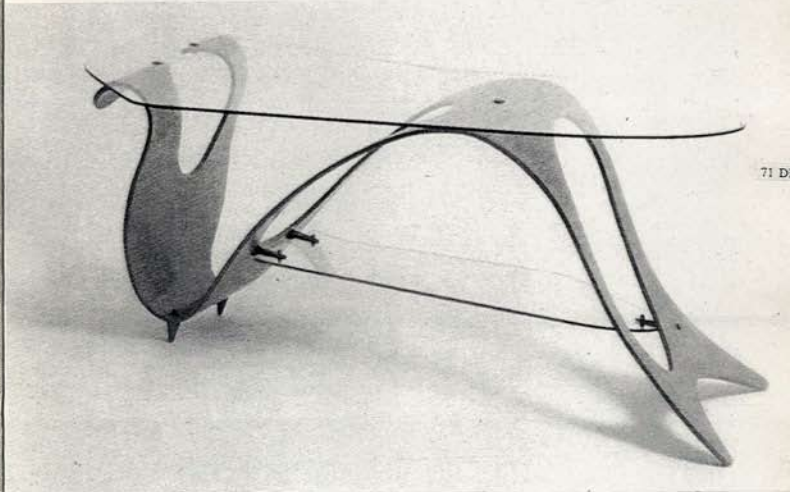
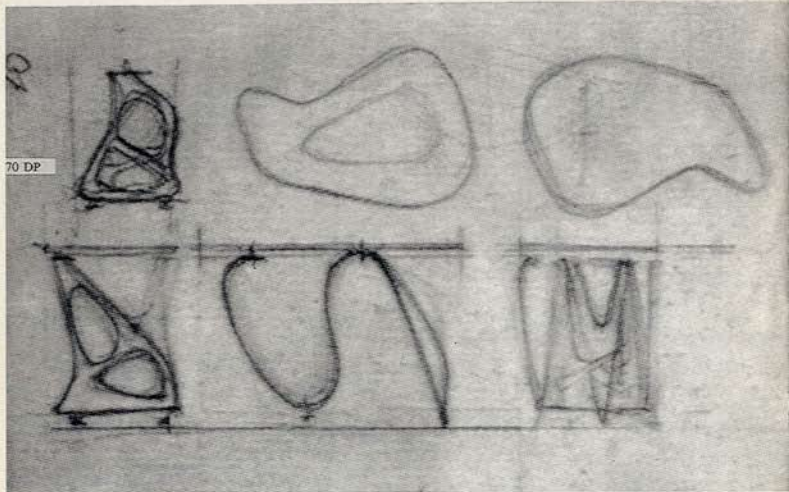


68 DP

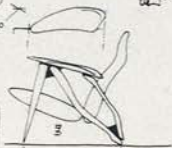
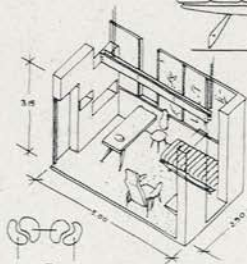
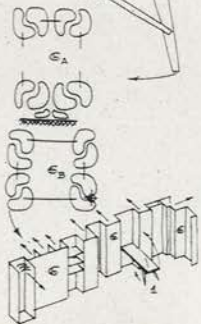
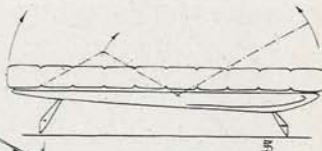
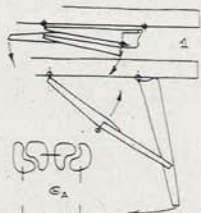


69 DP

Serie "Arabesco", 1950.



Ambiente pranzo-soggiorno. Mostra per i musei Usa, 1950.



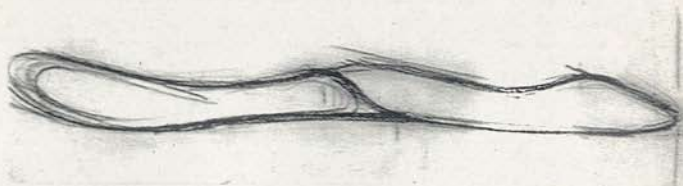
NO. PRODOTTO DA E. BERTON
 Via ...
 ACQUA MUSEI USA
 *Prodotto in collaborazione di
 anno 1950
 1.420 1.440
 1950



Posate per la Red & Burton, 1960.



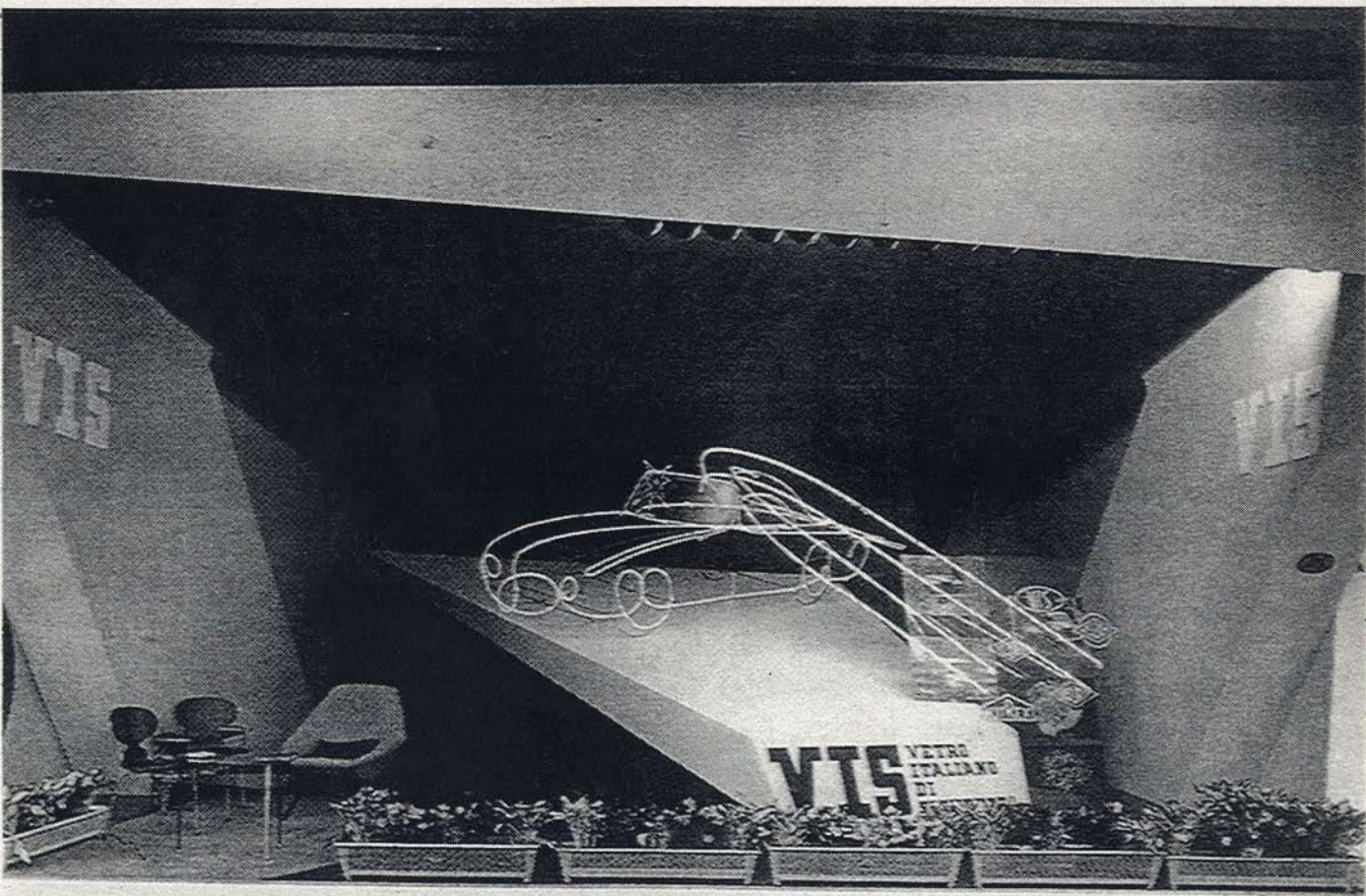
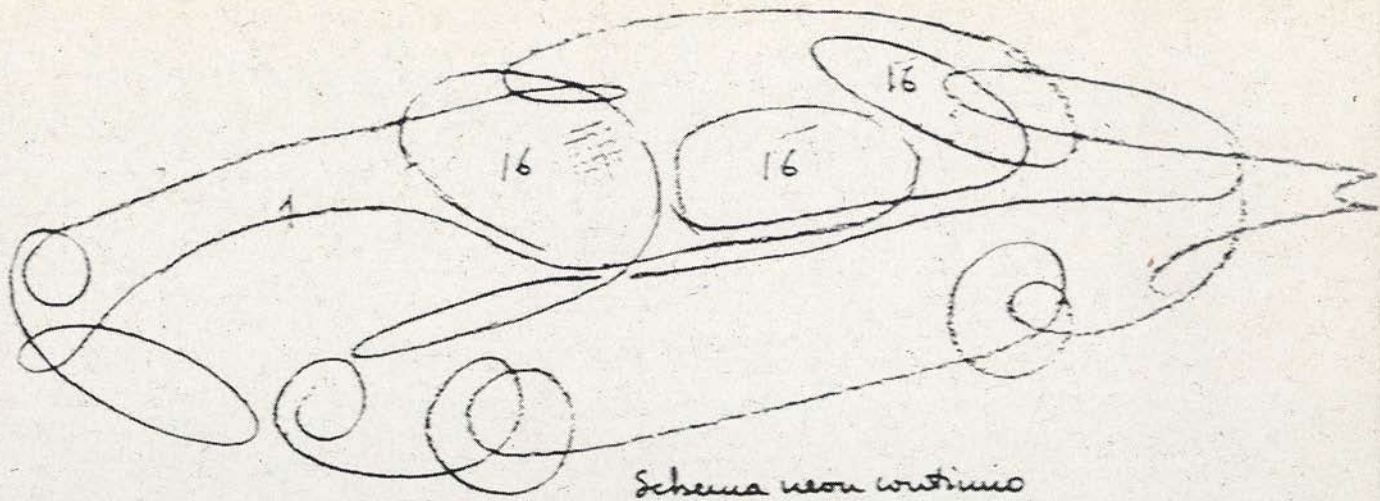
74 DP



Pullman Nube d'argento, 1954. con Franco Campo e Carlo Graffi



75 D



52 DP



77 D