

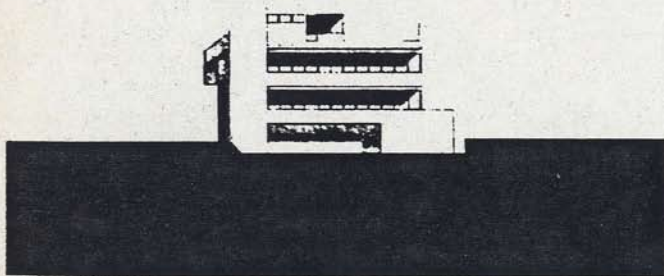
THE WORK OF ARCHITECT
Richard Neutra

KUN HOUSE

LOS ANGELES CALIFORNIA
1936



NORTH ELEVATION

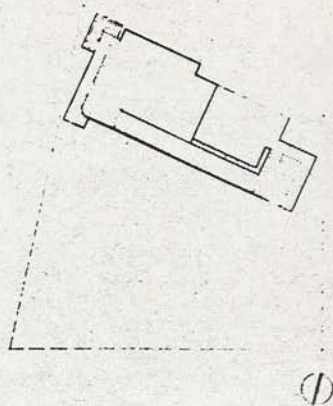


SOUTH ELEVATION

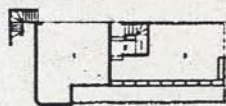


WEST ELEVATION

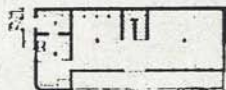
EAST ELEVATION



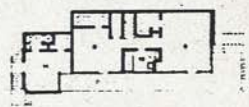
SITE PLAN



THIRD FLOOR PLAN



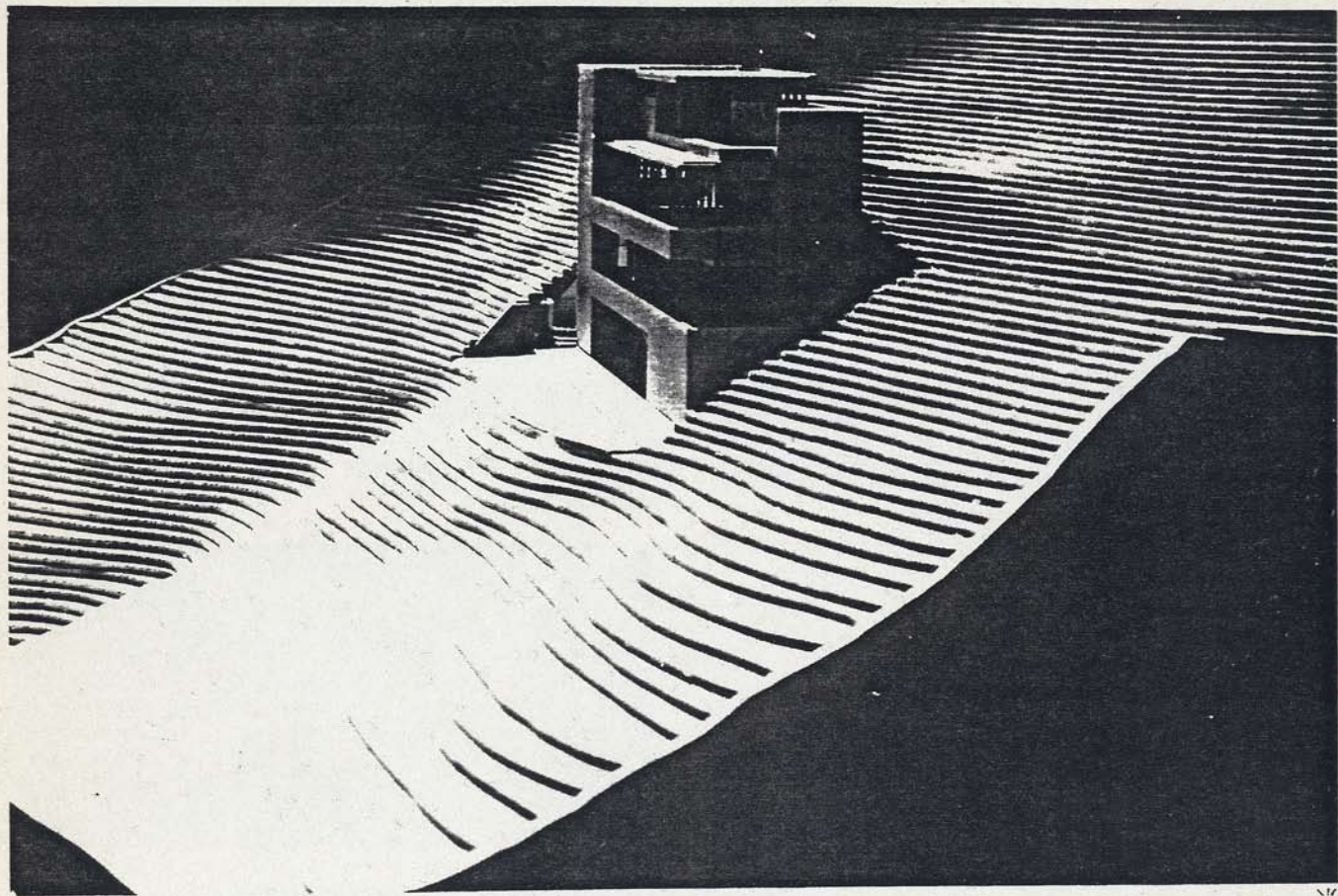
SECOND FLOOR PLAN



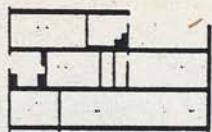
FIRST FLOOR PLAN

- 1. Concrete
- 2. Brick
- 3. Limestone
- 4. Limestone
- 5. Marble
- 6. Glass
- 7. Steel
- 8. Copper
- 9. Aluminum
- 10. Paint
- 11. Wood

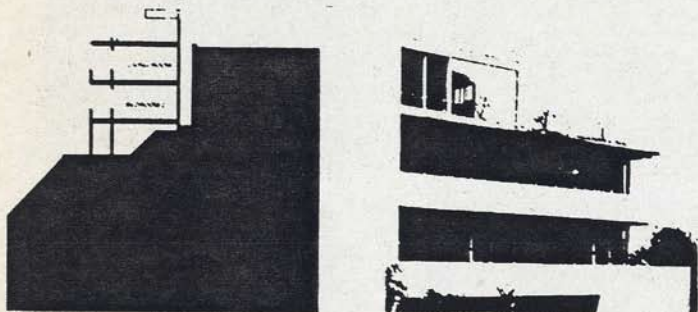








SECTION

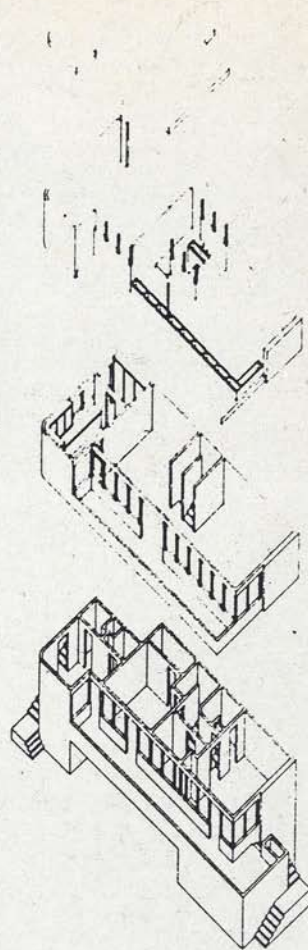


SECTION

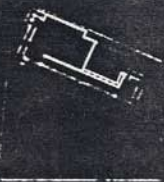
Richard Neutra Case Study Project

1936-1937, Los Angeles, CA

Neutra's biggest and most significant three house in Los Angeles got connected with a film industry was the house in Laurel Canyon for columnist Josef Luft, 1936. The garage and third floor entrance hall were flush with curving Fareham Drive. As the lower house one entered from the top and descended two levels into the living, dining and sleeping areas. Great balconies looked out on the city and the sea. From the street one perceived only a minimalist "glass house". Looking up from the canyon one saw a large void, another of Neutra's "leapfrog" compositions. The Luft house was also important to Neutra and to architecture in that it signaled the debut of Julius Shulman, who on a casual visit to the house took snap shots so stunning they were passed on to Neutra.



AXONOMETRIC



SITE



PROGRAM



STRUCTURE



ENTRANCE



CIRCULATION



ENCLOSURE