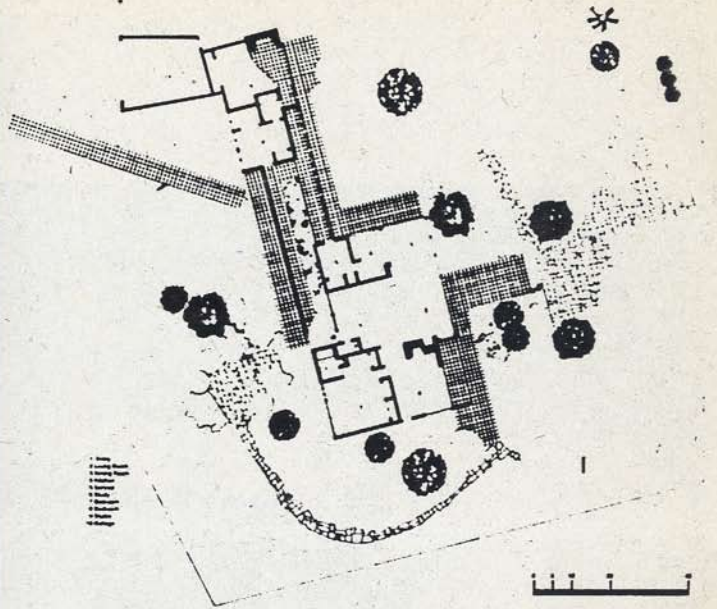
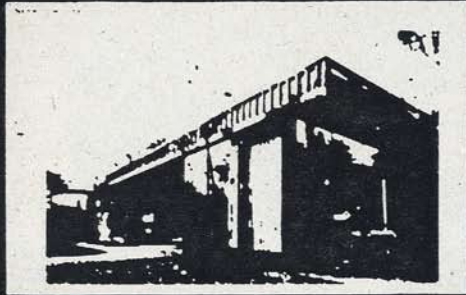


THE WORK OF ARCHITECT
Richard Neutra

NESBITT HOUSE

LOS ANGELES CALIFORNIA
1942



Floor Plan



West Elevation

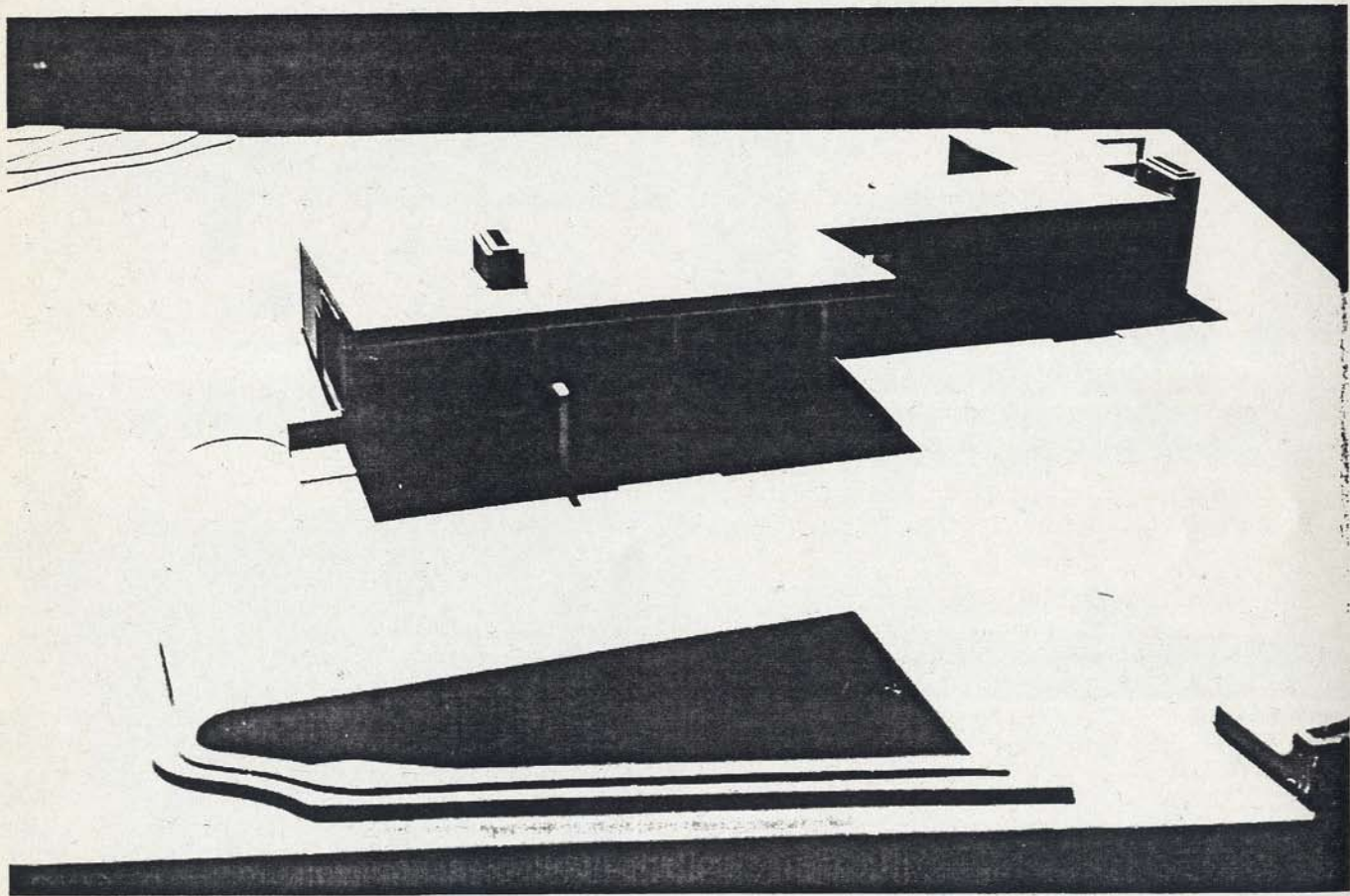


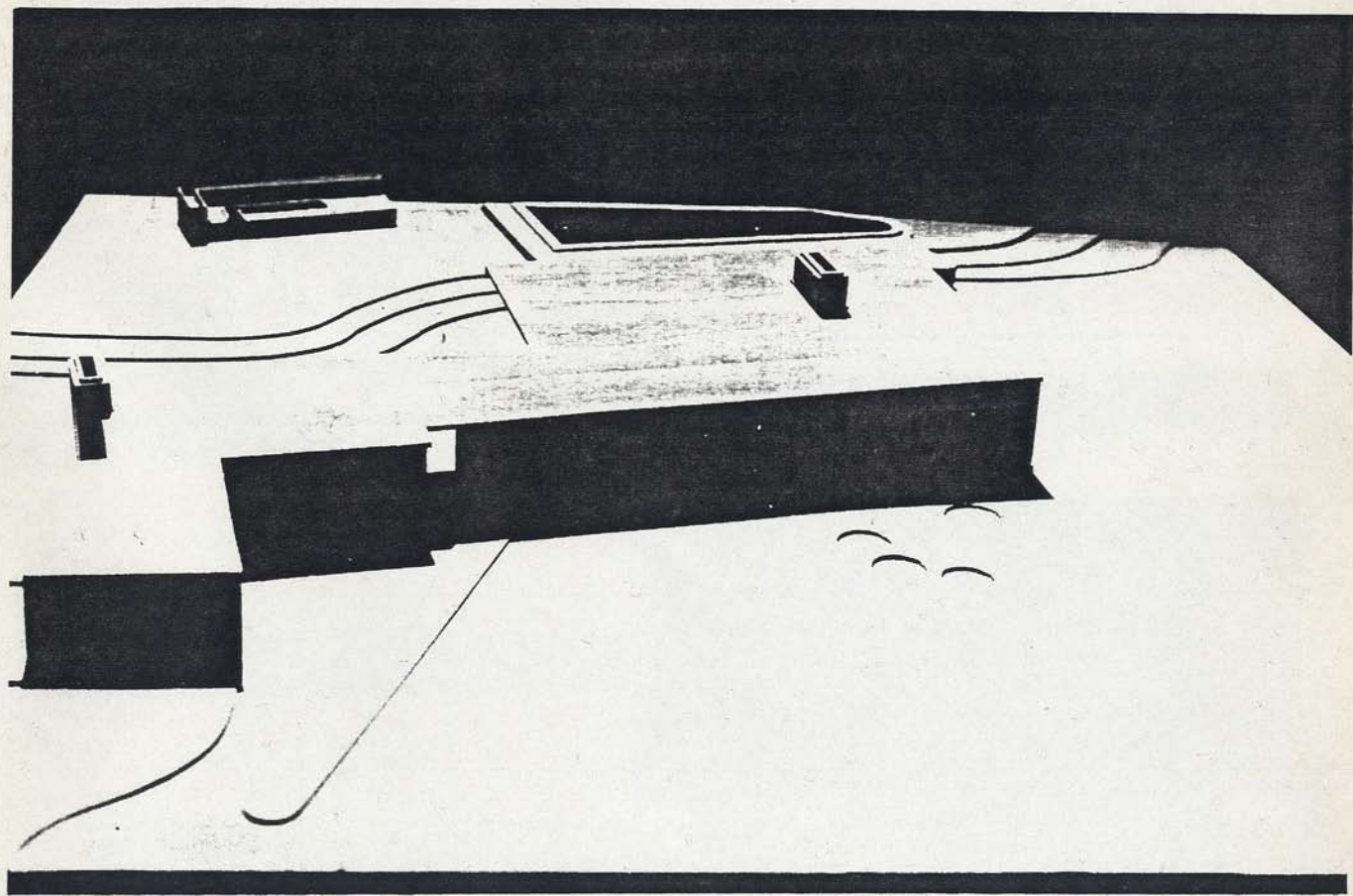
East Elevation

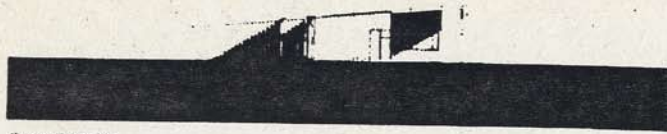


North Elevation

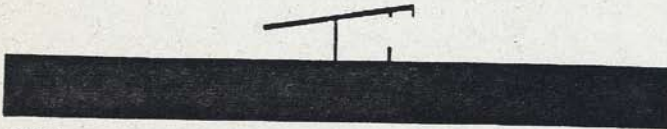








South Elevation



Section



Section

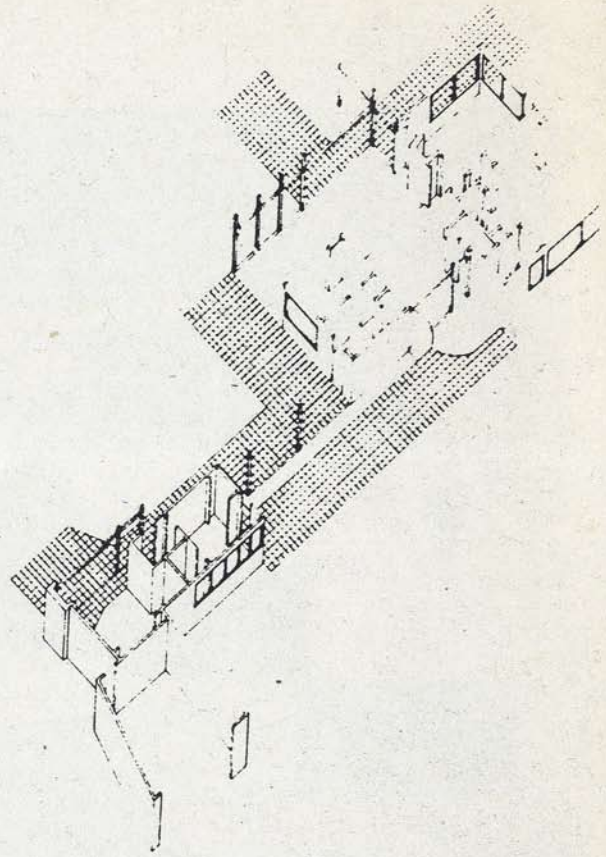
Richard Neutra Case Study Project

George G. Langford and Frank Meyer

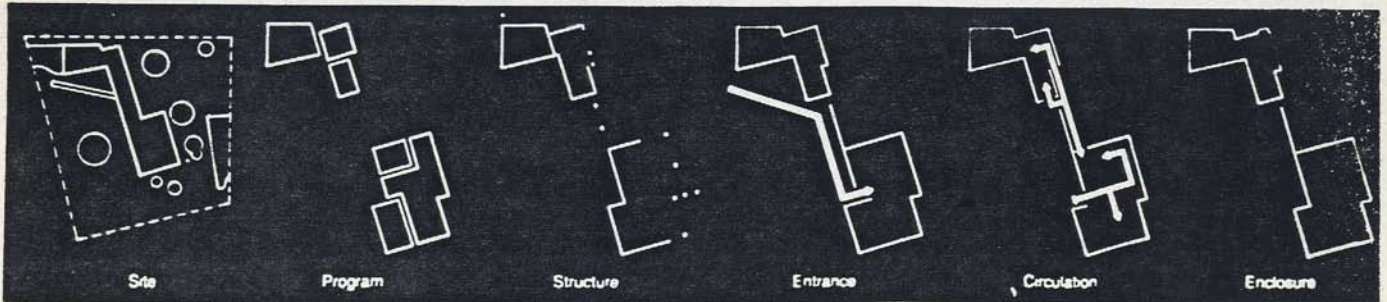
The house featured is reported in America as being the most beautiful residence by following the lead of the modern architecture of the 1920's and 30's. The author made a study of the house in 1934 and published the results in the book 'The House of the Future'.

The house which was built during the last period of the architectural movement in the United States, has a unique character. It is a case in which there is a structure in which the house is built on the ground level, the rooms are lighted and air conditioned above the ground level. The house is built on a concrete base.

The house is a modern house in a traditional style, and the author has been able to find a number of examples of the house in the United States. The house is a unique example of the modern house, and the author has been able to find a number of examples of the house in the United States. The house is a unique example of the modern house, and the author has been able to find a number of examples of the house in the United States.



Axonometric



Site

Program

Structure

Entrance

Circulation

Enclosure