

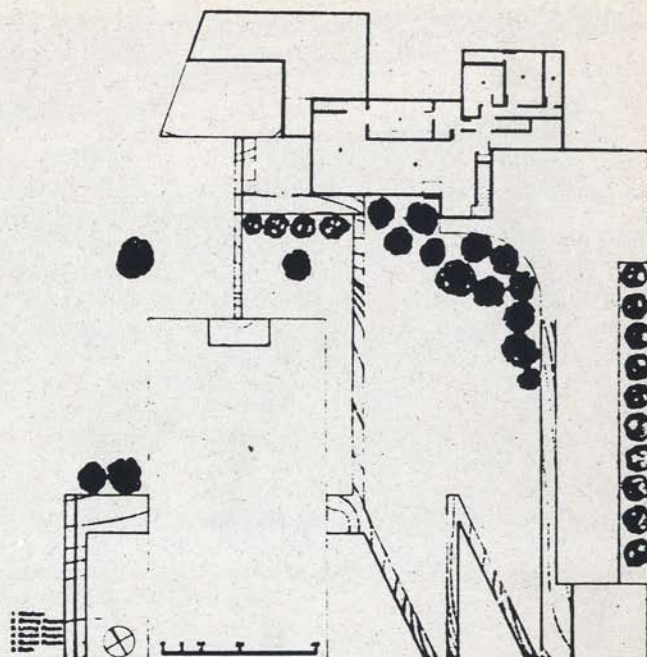
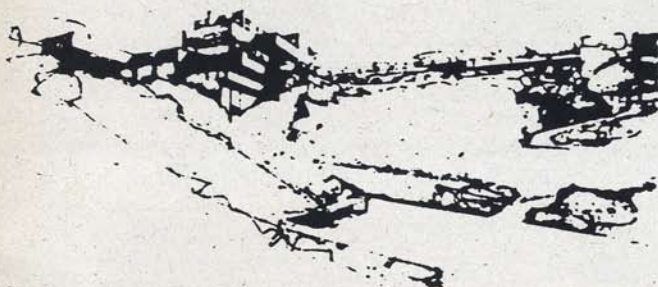
DP 204

DUPLICADO

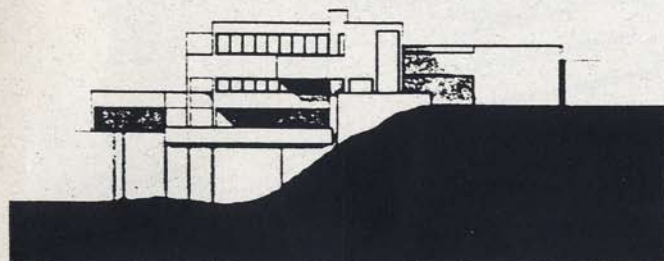
THE WORK OF ARCHITECT
Richard Neutra

LOVELL HOUSE SCHEME 2

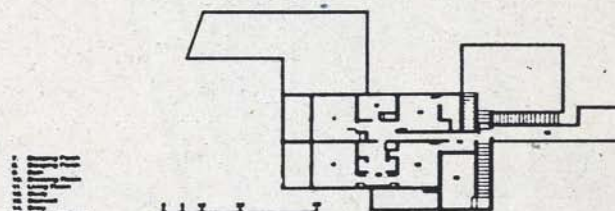
LOS ANGELES CALIFORNIA
1929



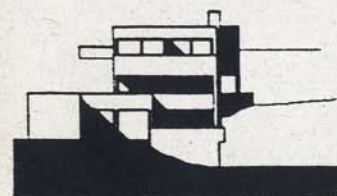
2ND FLOOR PLAN/SITE PLAN



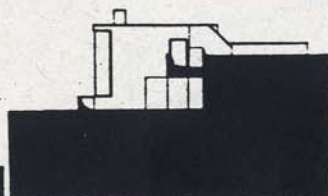
SOUTH ELEVATION



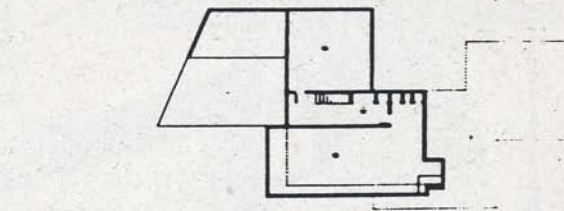
3RD FLOOR PLAN



WEST ELEVATION

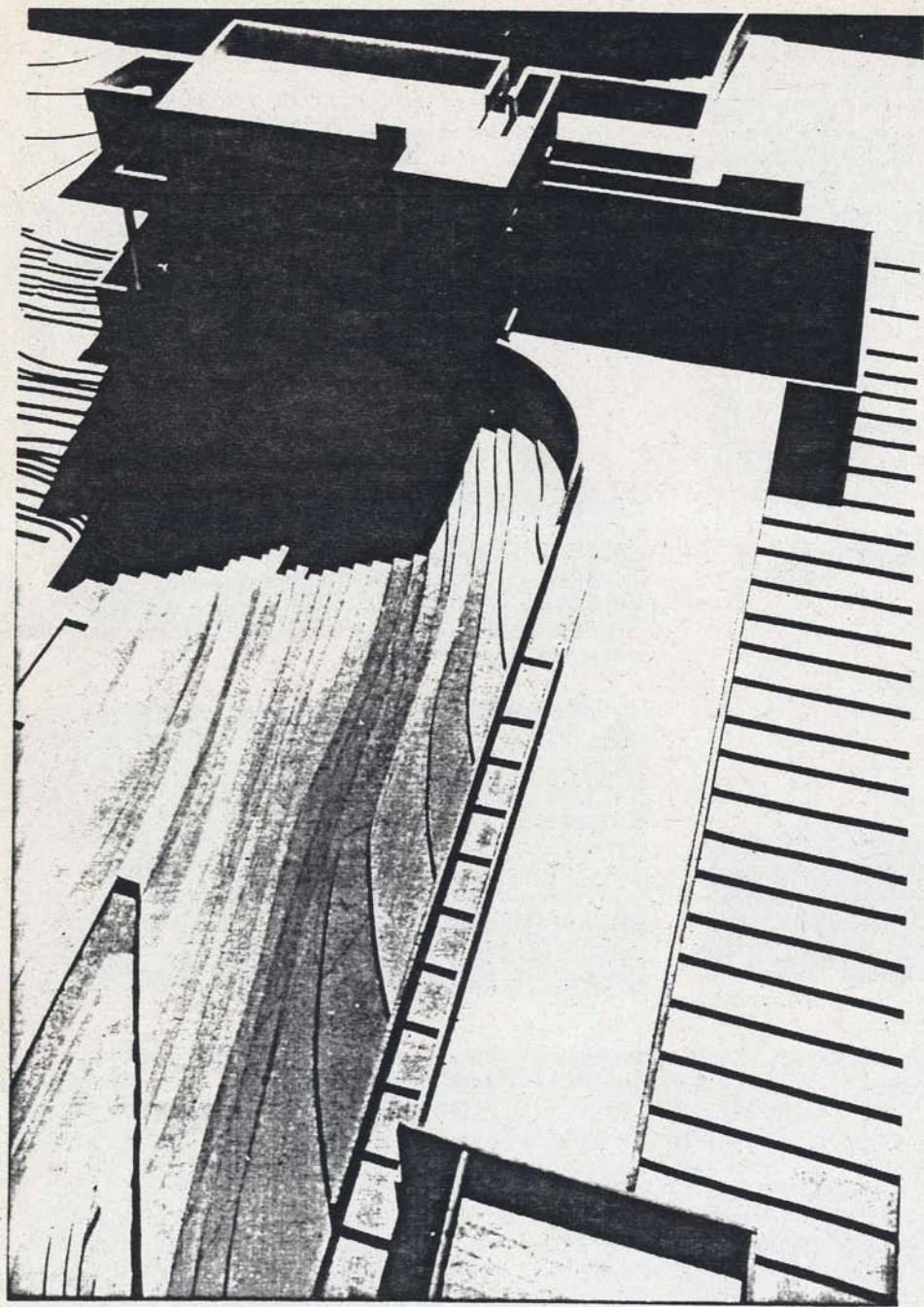


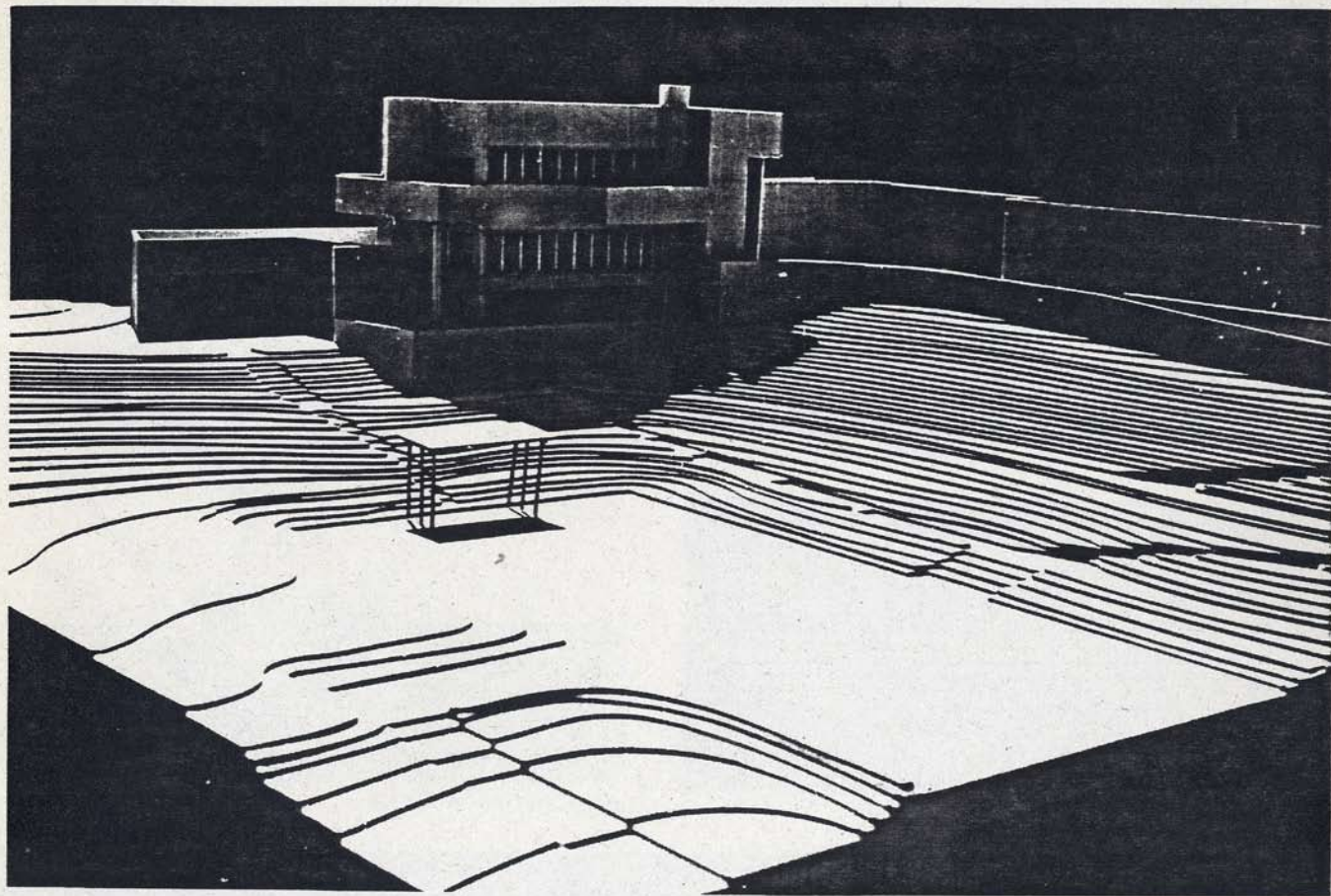
EAST ELEVATION

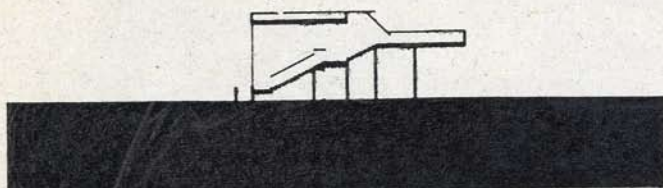


1ST FLOOR PLAN

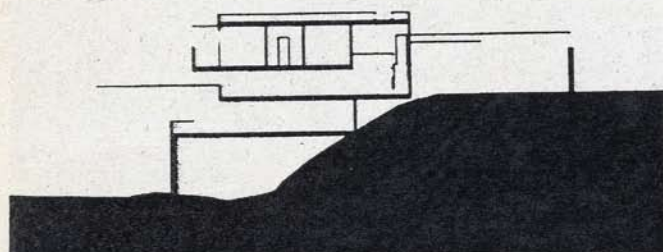
ESCOLA SUPERIOR D'ARQUITECTURA
BIBLIOTECA







SECTION A

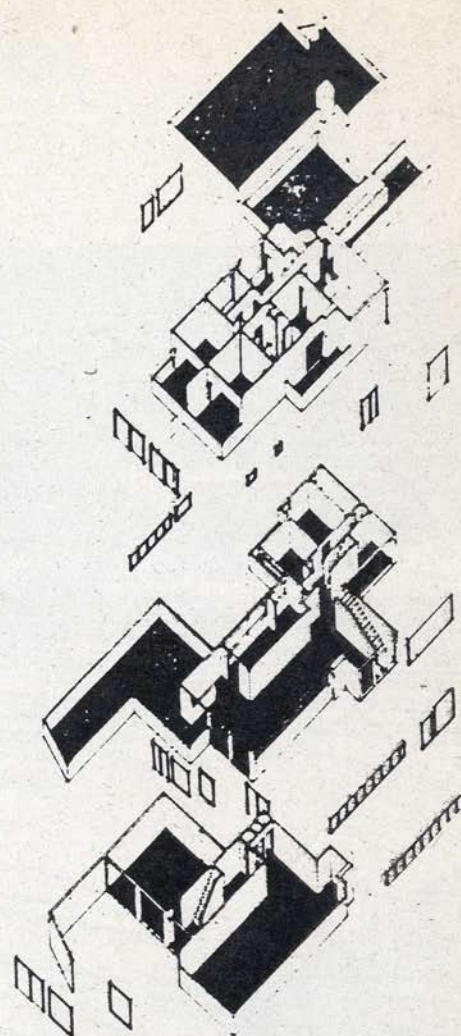


SECTION B

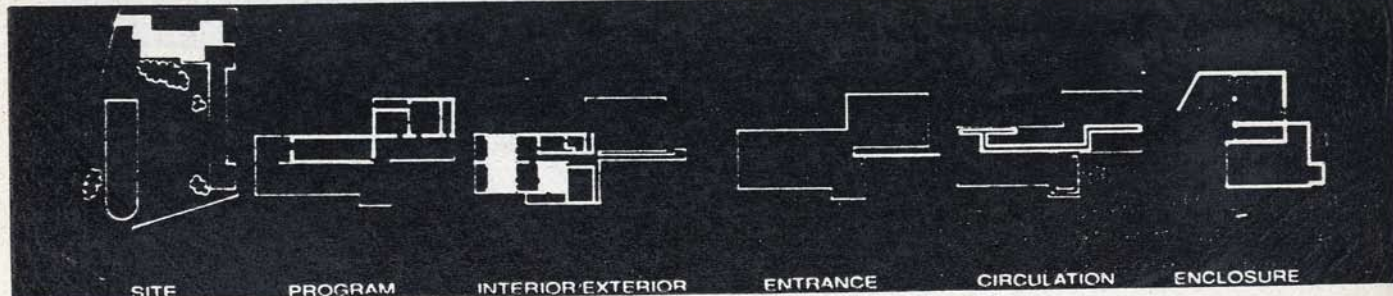
Richard Neutra Case Study Project

by
Henry Lo and Chris Campbell

The Lovell House was designed in three schemes, with the third scheme being the final, built version. There are only three drawings in existence for the second scheme. With the second scheme of the Lovell House, Richard Neutra designed all levels to be fully articulated, with elevations consisting almost entirely of continuous parapets. In this scheme, he moved the garage to a separate location along the road, connected to the house by a long, high-walled garden. The most interesting exterior feature is a two-story roofed terrace, and besides the narrow glazed stairwell opening into the living room there is one other indication of internal volumetric development. Each floor has a different configuration of exterior walls, giving variation while keeping a sense of a single volume. The Lovell House was one of the first houses built with a steel frame, yet it is not evident, there is no expression of steel in the final home, and no evidence of modular construction.



EXPLODED AXONOMETRIC



SITE

PROGRAM

INTERIOR EXTERIOR

ENTRANCE

CIRCULATION

ENCLOSURE