

# Sustainable Development in the Engineering Schools in the Mediterranean Basin

Earth Summit in Rio de Janeiro (1992) led to:

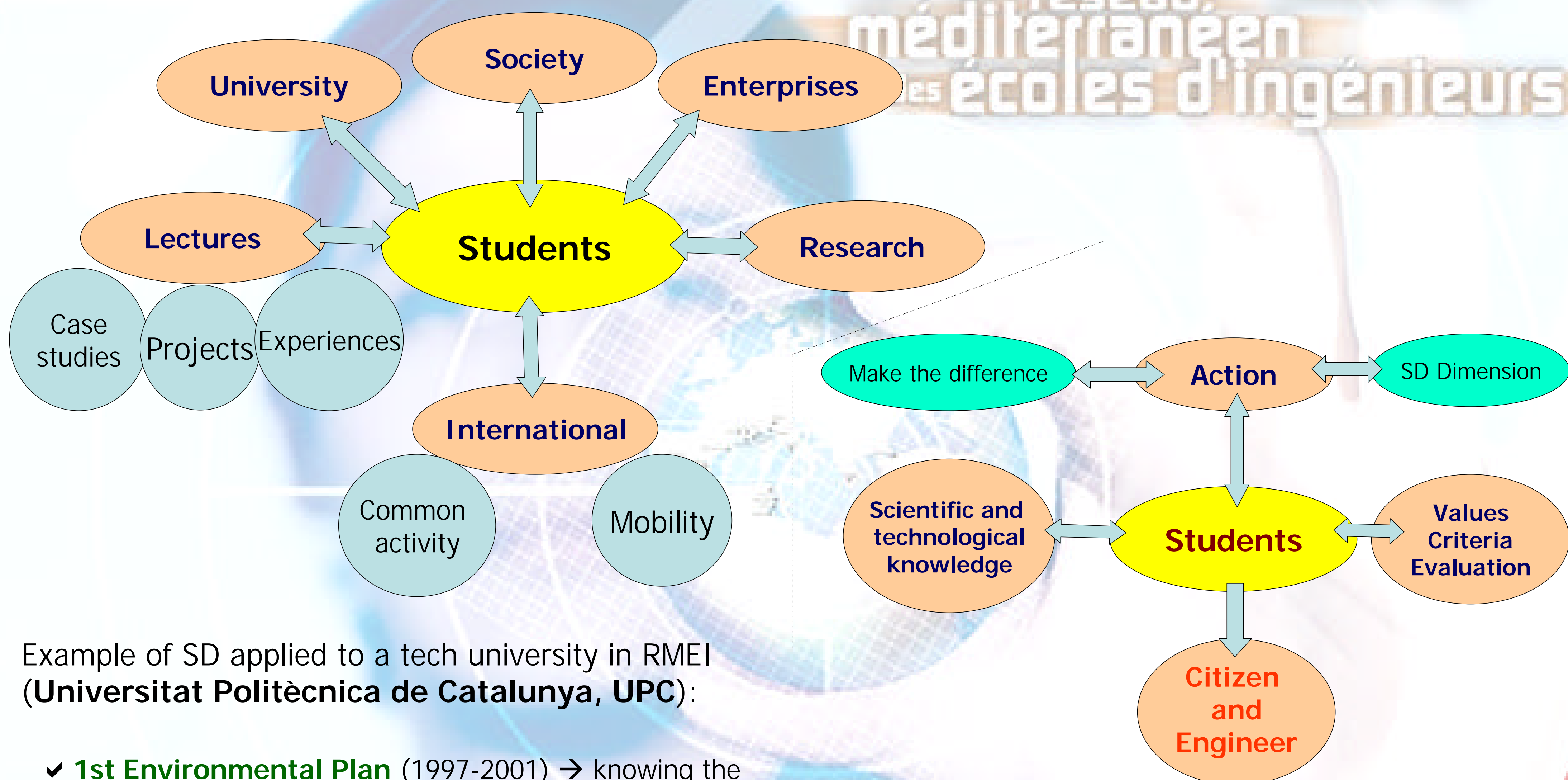
- a worldwide project: **Sustainable Development (SD)**
- a strategy to follow: **Agenda 21**

The "**Sustainable Development**" concept must take into account not only the environmental issues, but also the economic, social and cultural rights specific to the Mediterranean basin:

- quality of coastal and inland waters,
- quality of urban air,
- demographic changes,
- social and religious tensions, ...

**Mediterranean Network of Engineering Schools** ("*Réseau Méditerranéen des Ecoles d'Ingénieurs*" or **RMEI**, in French):

- Association created in 1997.
- It includes more than 40 Engineering schools and technological universities in Mediterranean countries.
- One of its actions: to promote the **SD** in these Engineering Schools.



Example of SD applied to a tech university in RMEI (**Universitat Politècnica de Catalunya, UPC**):

✓ **1st Environmental Plan** (1997-2001) → knowing the actual SD status and defining a SD model.

✓ **2nd Environmental Plan** (2002-2005) → reinforcing UPC's commitment to SD and optimizing the management of available resources, by working in 4 areas:

- 1) Education.
- 2) Research.
- 3) University and Campus life.
- 4) Communication and coordination.

✓ **Sustainable UPC Plan 2015** → commitment with society, through 5 challenges:

- 1) Building, energy and climate change.
- 2) Water management.
- 3) Social responsibility of technology.
- 4) Territorial planning, mobility and logistics.
- 5) Material cycles, eco-design and waste management.

**Lázaro V. CREMADES**

ETSEIB-UPC

Av. Diagonal 647, 08028 Barcelona (SPAIN)

cremades.sd.etsib@upc.edu



**Léo VINCENT**

Ecole Centrale Marseille

Technopôle de Château-Gombert, 13451 Marseille (FRANCE)

leo.vincent@egim-mrs.fr

www.rmei.net

