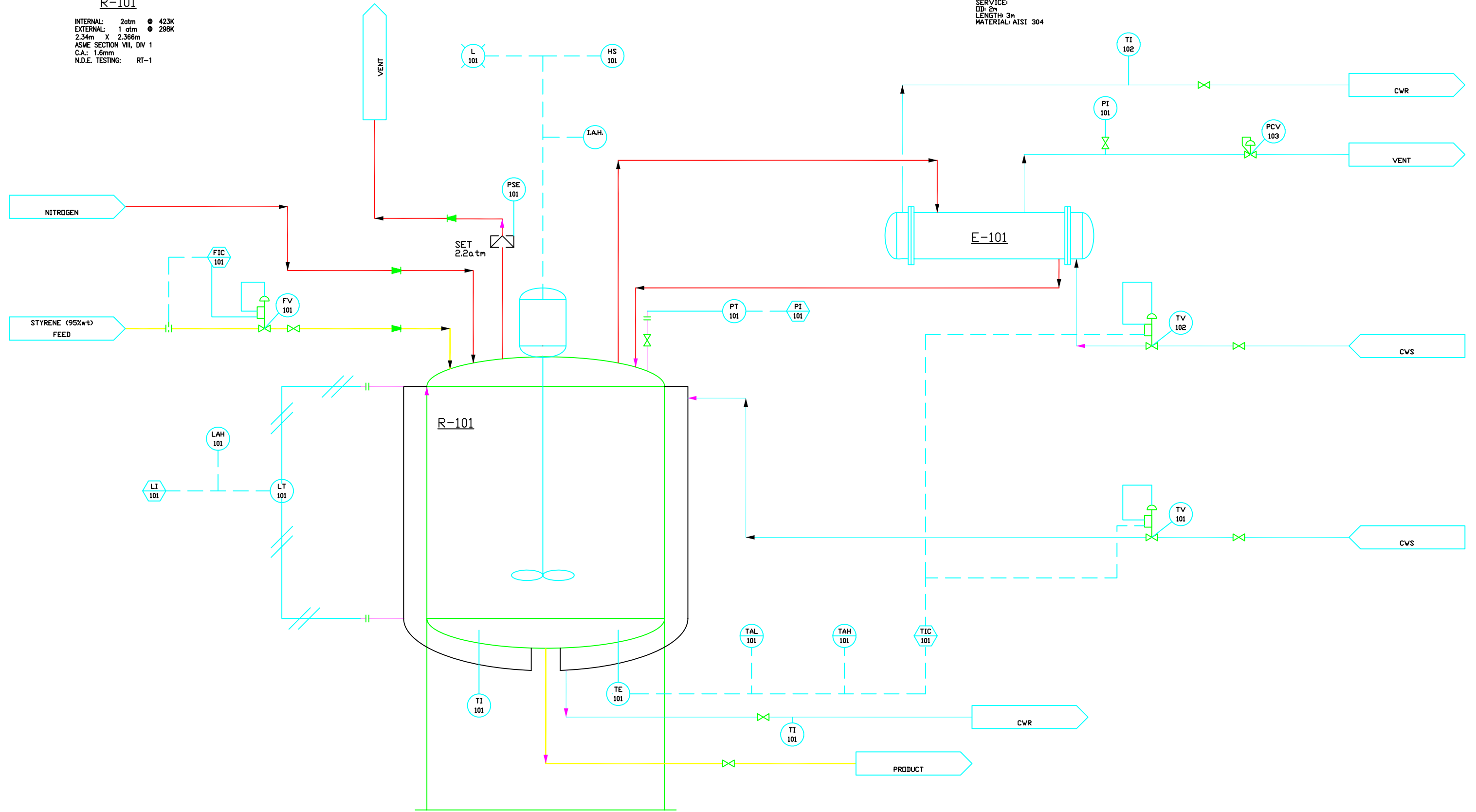


R-101

INTERNAL: 2atm ● 423K
 EXTERNAL: 1 atm ● 298K
 2.34m X 2.366m
 ASME SECTION VIII, DIV 1
 C.A.: 1.6mm
 N.D.E. TESTING: RT-1

E-101

SERVICE:
 ODI: 2m
 LENGTH: 3m
 MATERIAL: AISI 304



NO.	REVISION	DATE	BY	APR

DISENO DE UN REACTOR
 AGITADO PARA POLIESTIRENO EN MASA

ENG. RECORD	DATE
DRAWN BY JLC	ABRIL 2009
CHECKED	
APPROVED	
APPROVED	
SCALE NONE	

POLYSTYRENE REACTOR PIPING & INSTRUMENT DIAGRAM	
JOB NO. M	
DRAWING NO. 001	REV. 1