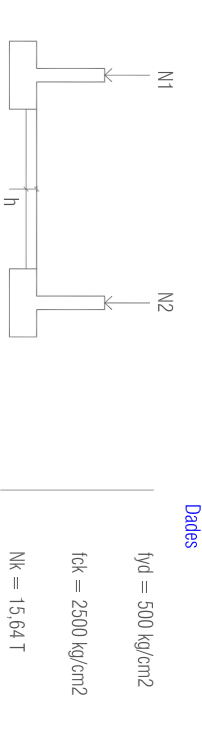


Perfil sistema NI

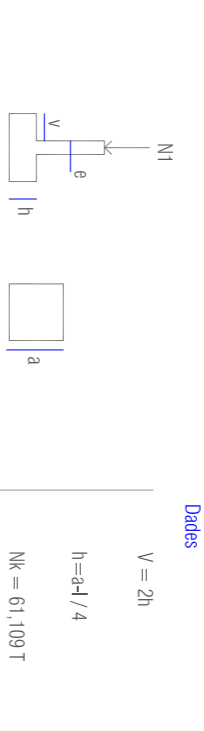


NI = 500 g/m²
 NI = 2500 g/m²
 NI = 15.64 T
 NI = 15.64 T

NI (Llens estacionals) = 61100 T
 NI = 16.6 (1.6 x NI)
 NI = 15.64 T
 Actual = (V / 2500) x 1000

Compriment de les finestres
 b x h = 3 x Actual x 0.9 / 1.6
 Actual = 15.64 x 0.25 = 0.25 m²
 b x h = 3 x 62.55 x 0.90 / 2500
 b = 37 cm. 60 cm separa per diaframets d'arcada

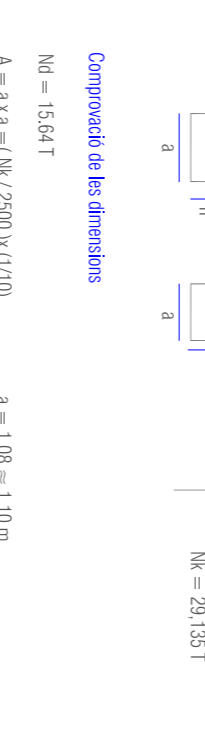
Perfil sistema allista S1



NI = 15.64 T
 A = a x a = (NI / 2500) x (1/10)

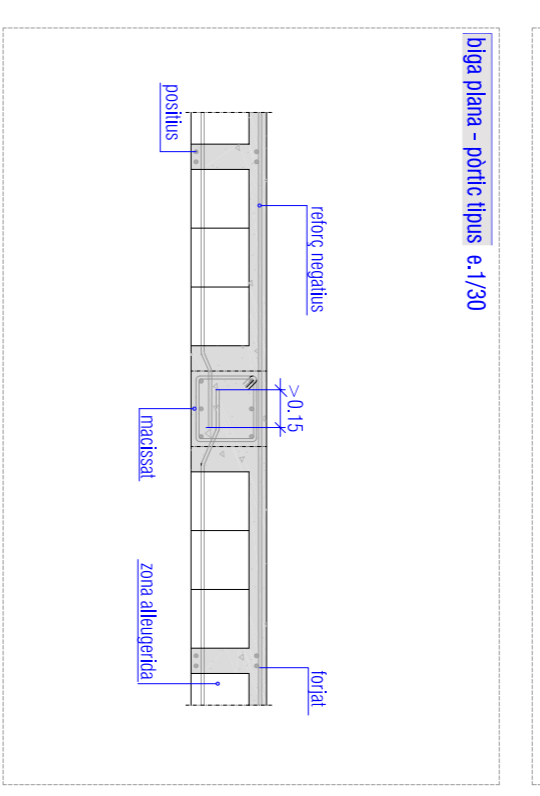
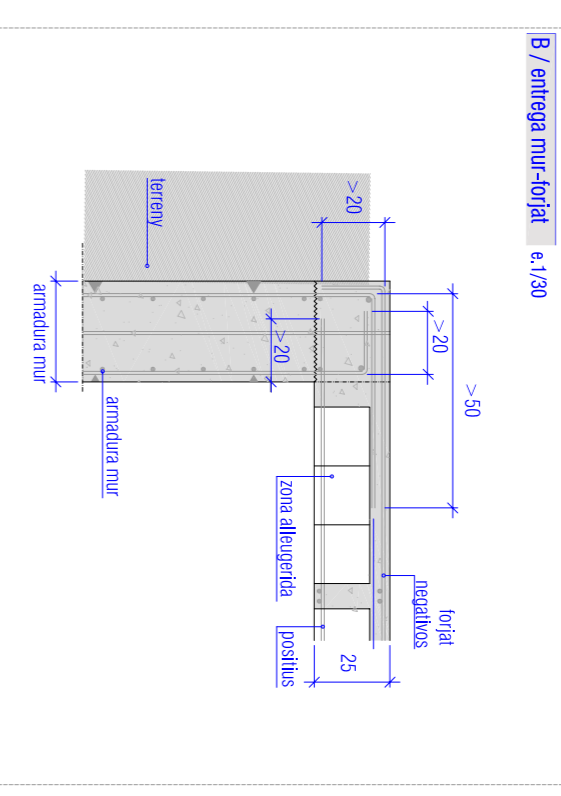
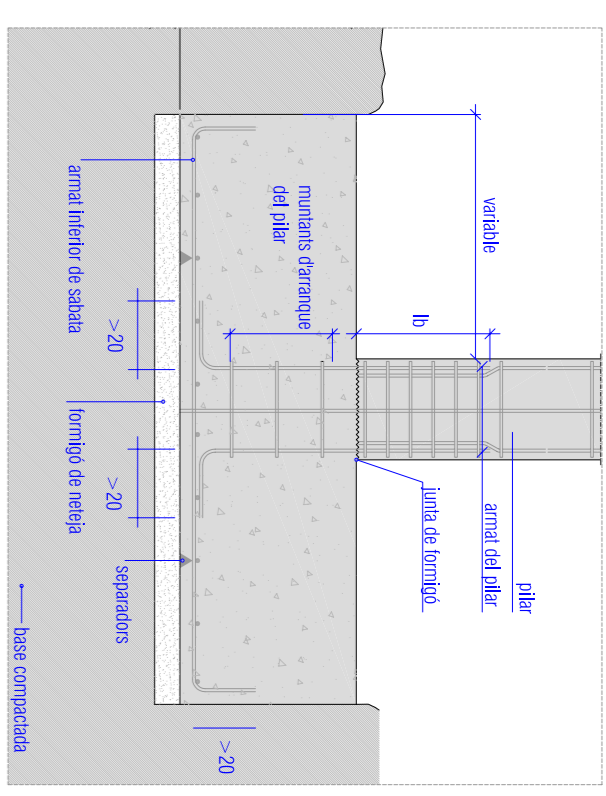
Compriment de les finestres
 NI = 15.64 T
 A = a x a = (NI / 2500) x (1/10)
 a = 1.58 = 1.60 m

Perfil sistema allista S2

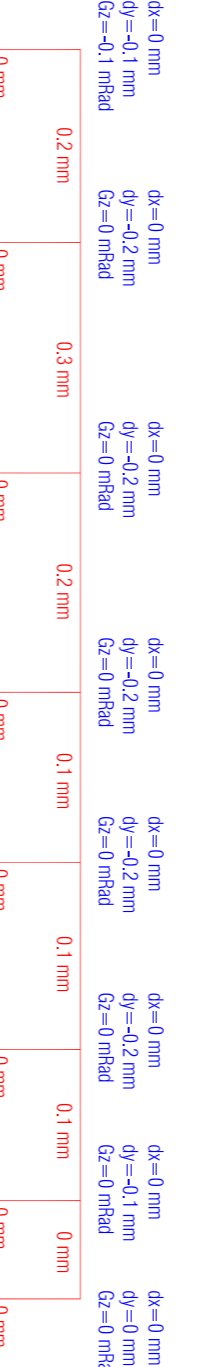
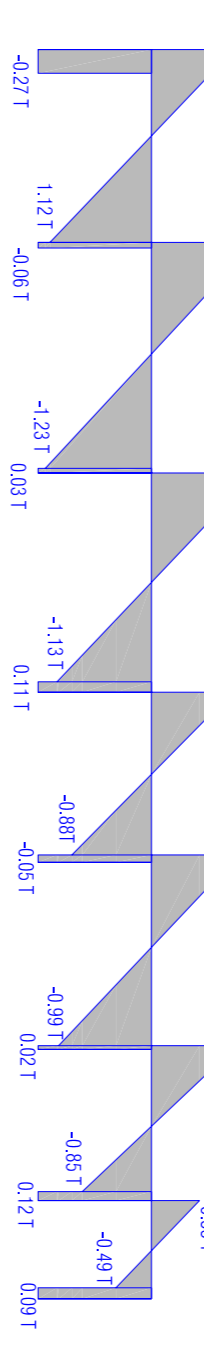
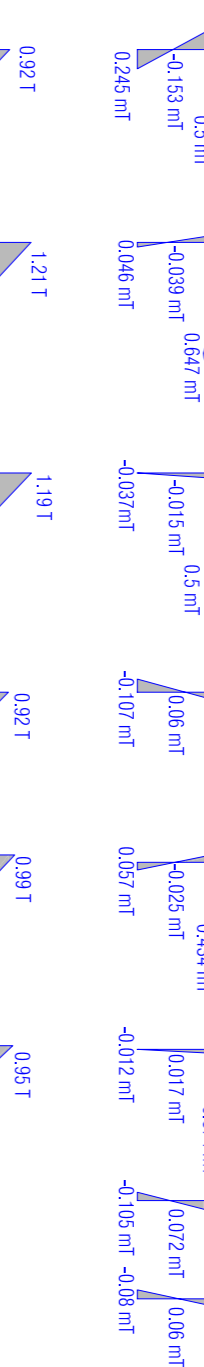
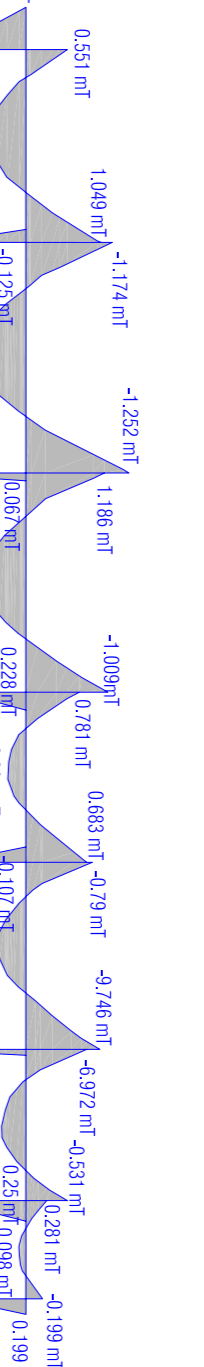
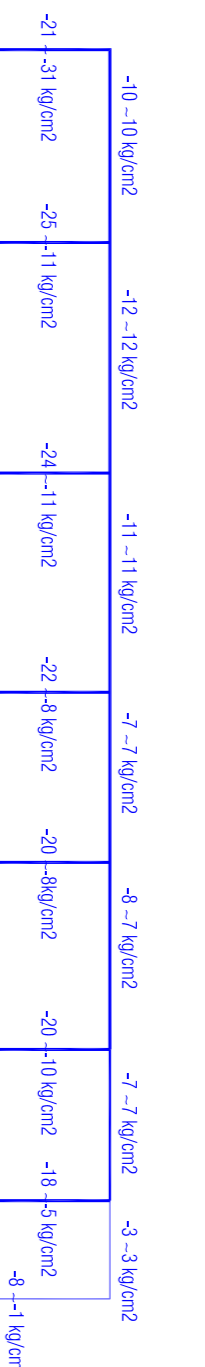
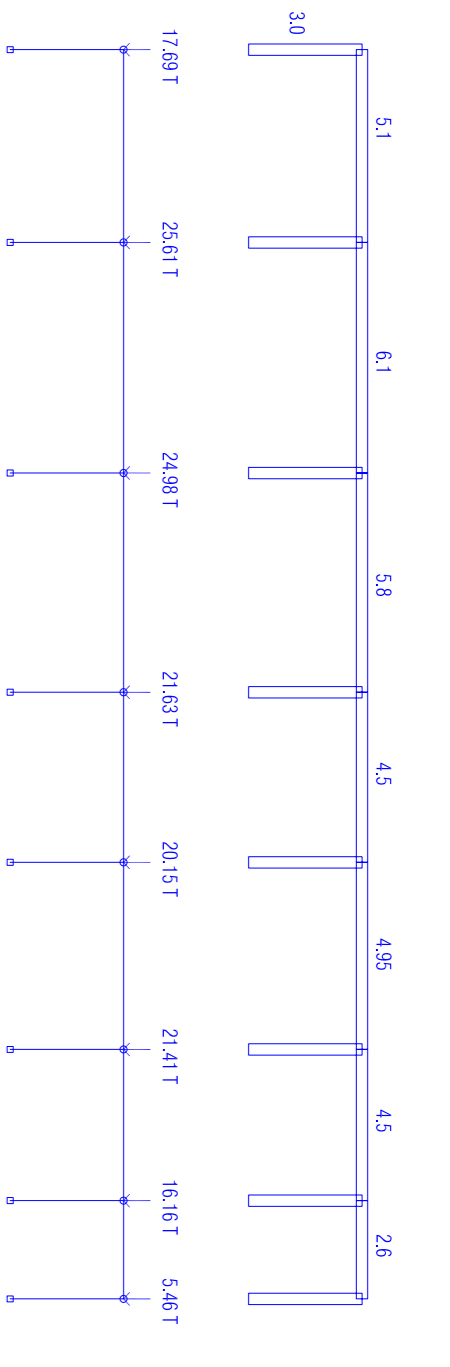


NI = 15.64 T
 A = a x a = (NI / 2500) x (1/10)
 a = 1.58 = 1.60 m

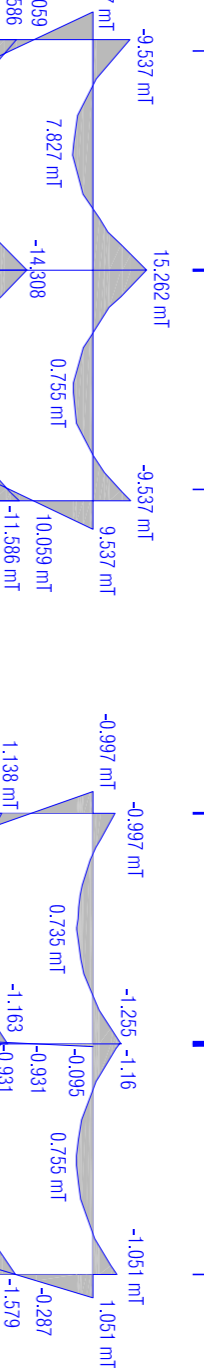
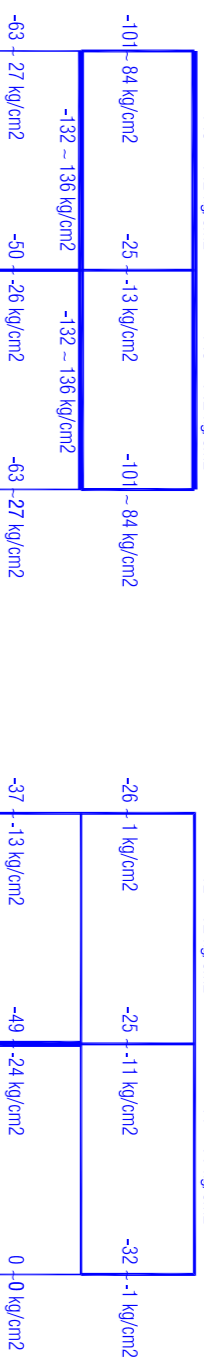
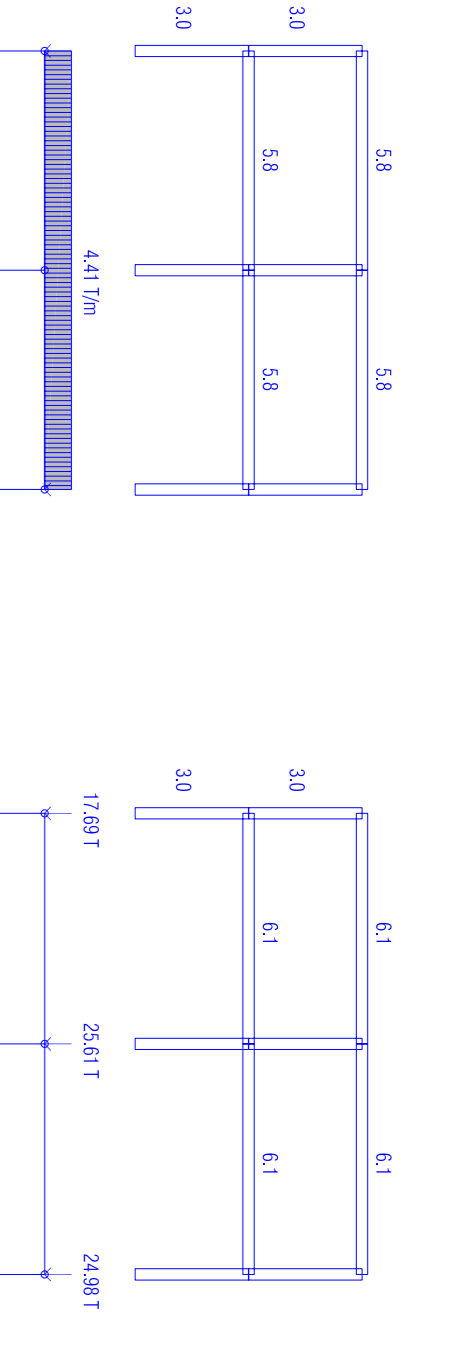
A/detall sistema allista e/1/20



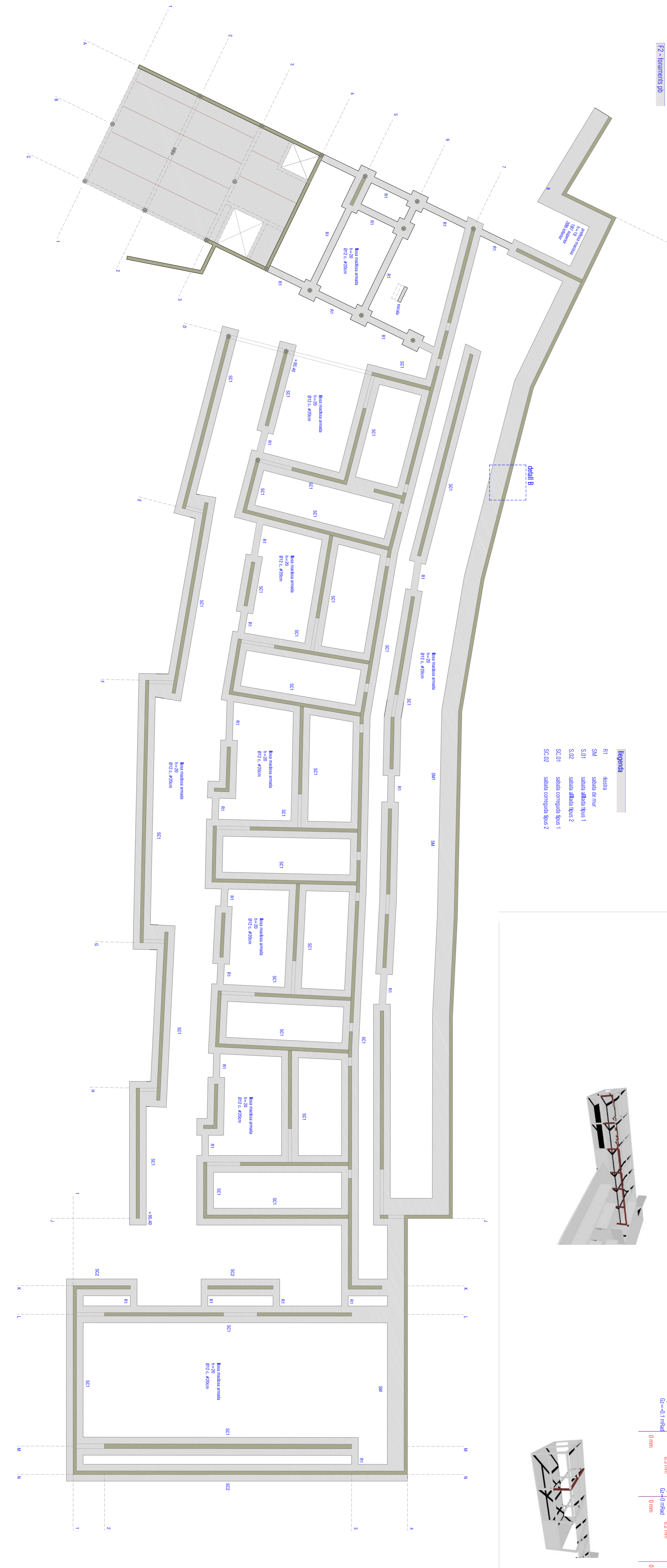
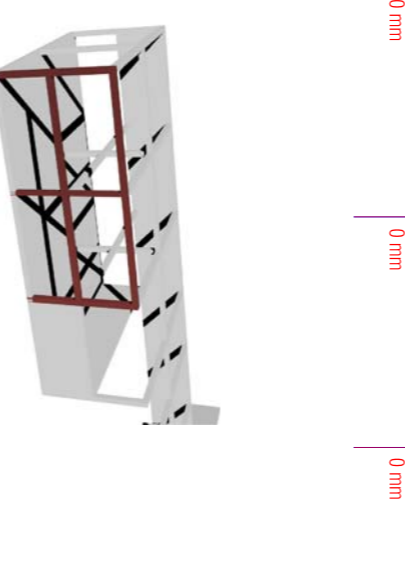
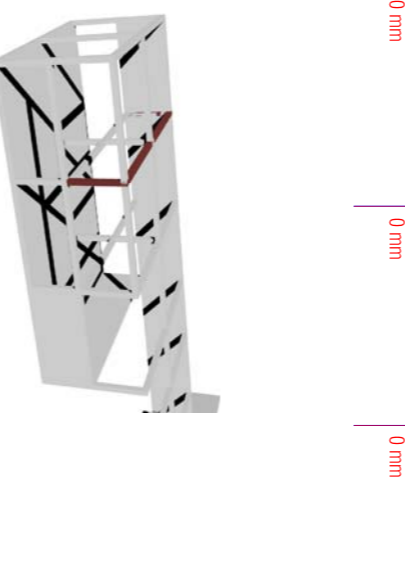
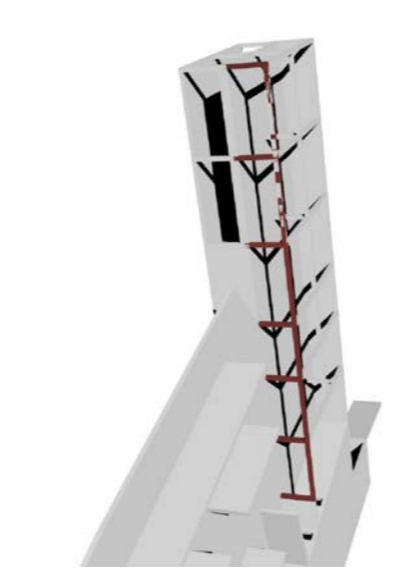
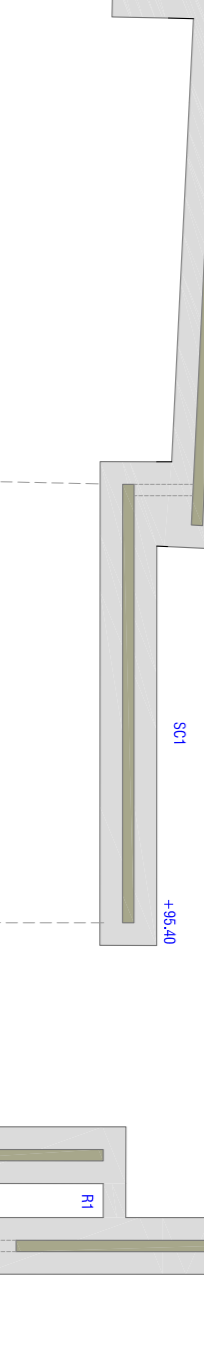
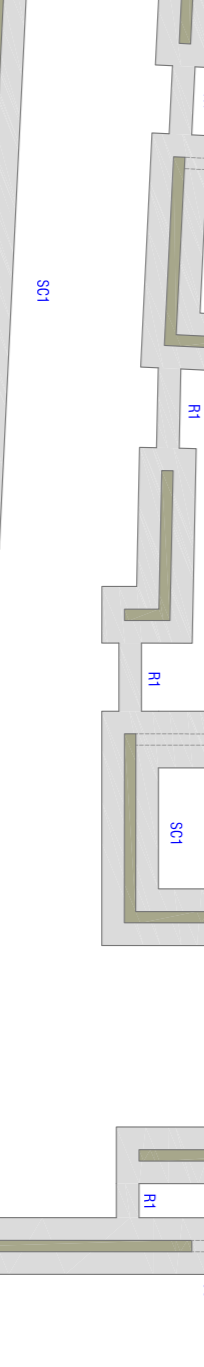
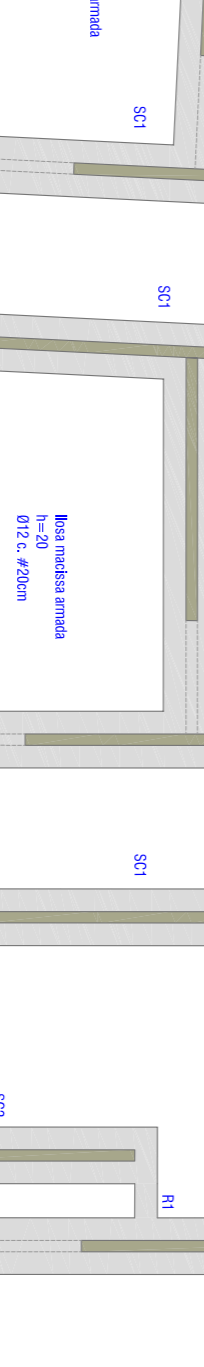
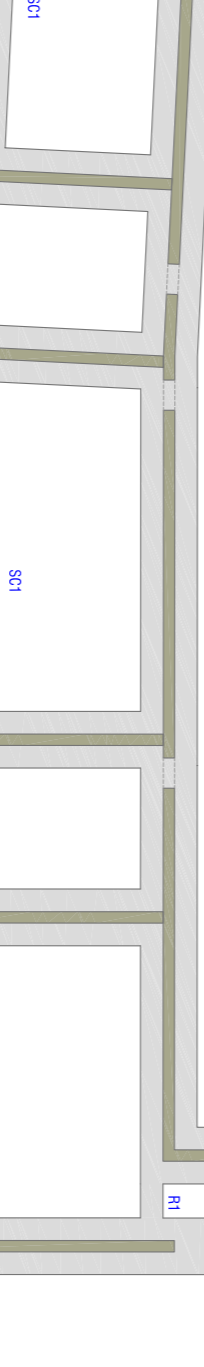
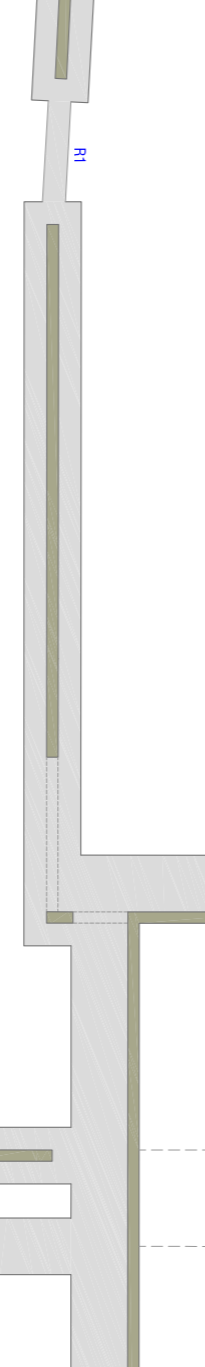
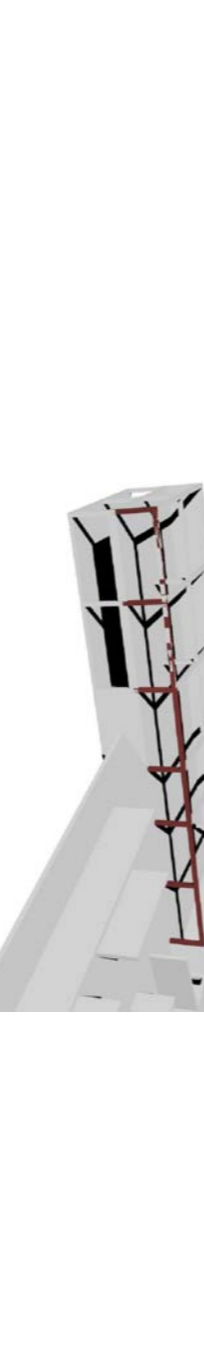
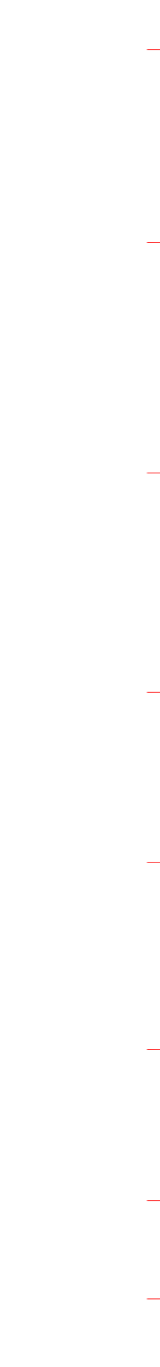
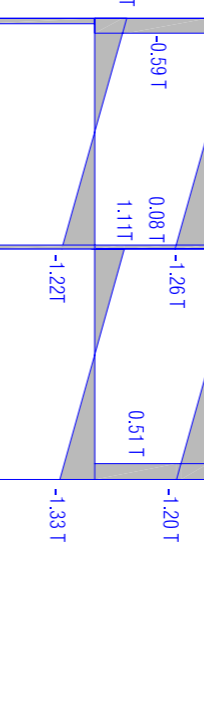
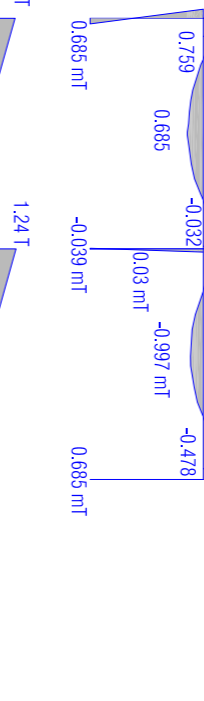
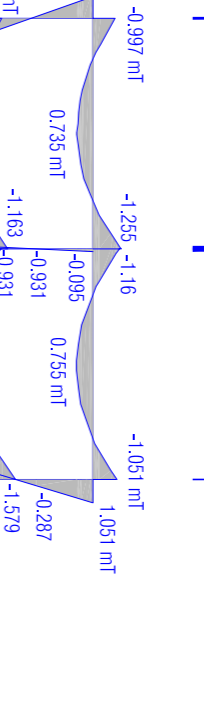
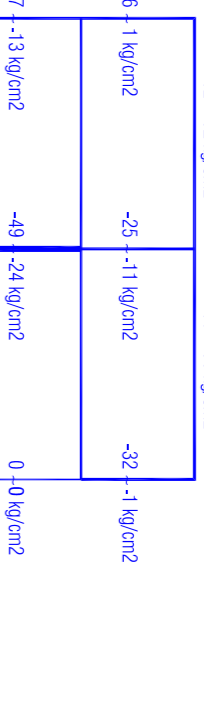
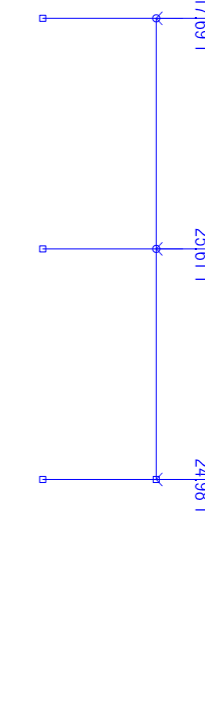
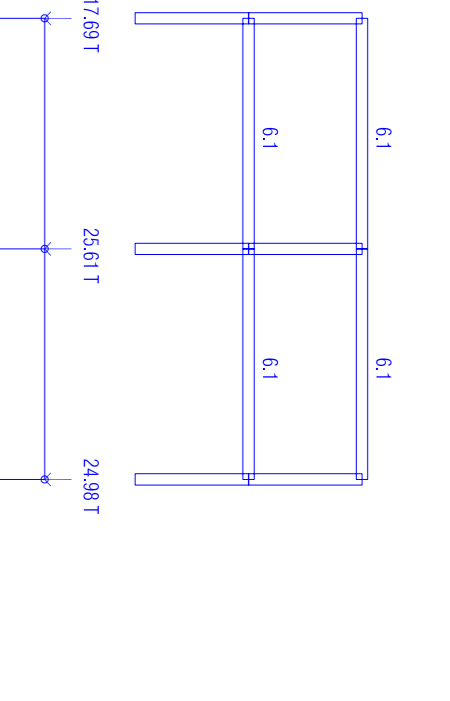
F2 - Pontic C-1/7



Pontic 2 - A/C



Pontic B - 1/3



- legenda**
- RI fideia
 - SM1 salida de mar
 - S.O1 salida allista tipus 1
 - S.O2 salida allista tipus 2
 - SC.O1 salida conegada tipus 1
 - SC.O2 salida conegada tipus 2