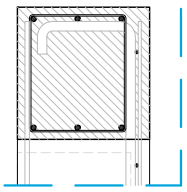


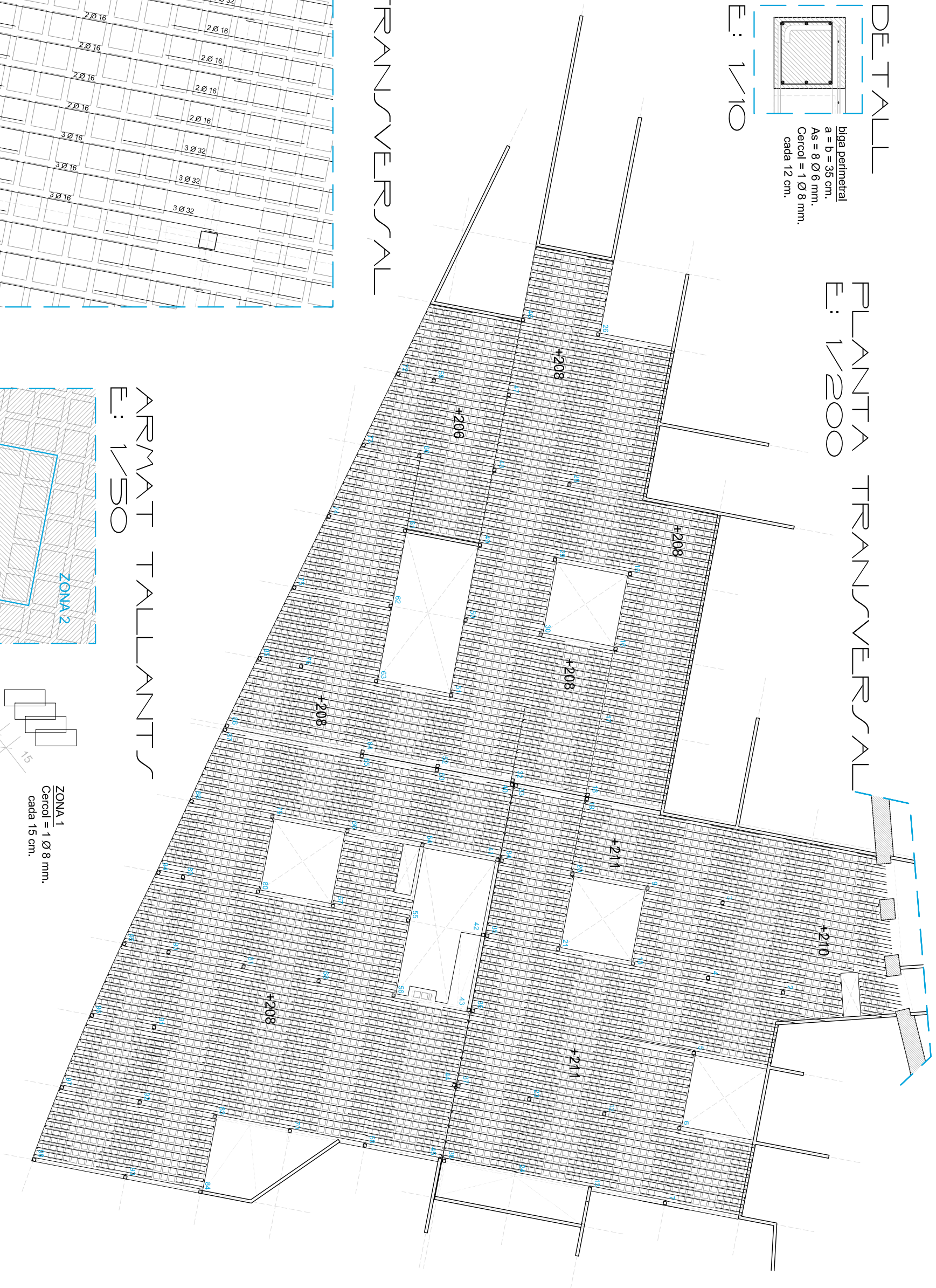
DESCRIBS DE CARREGUES		
CARREGA COBERTA JARDI:	500 Km2	
TERRA+SORRA+10% AIGUA (50 cm)	5 Km2	
POLÈTIL·LE	150 Km2	
FORMIGÓ CEL·LULAR (10 cm)	130 Km2	
PES PROPÍ FORJAT	125 Km2	
CAPA COMPRESSIÓ (5 cm)	400 Km2	
CARREGA D'US (espall públic)	50 Km2	
CARREGA DE NEU	1360 Km2	



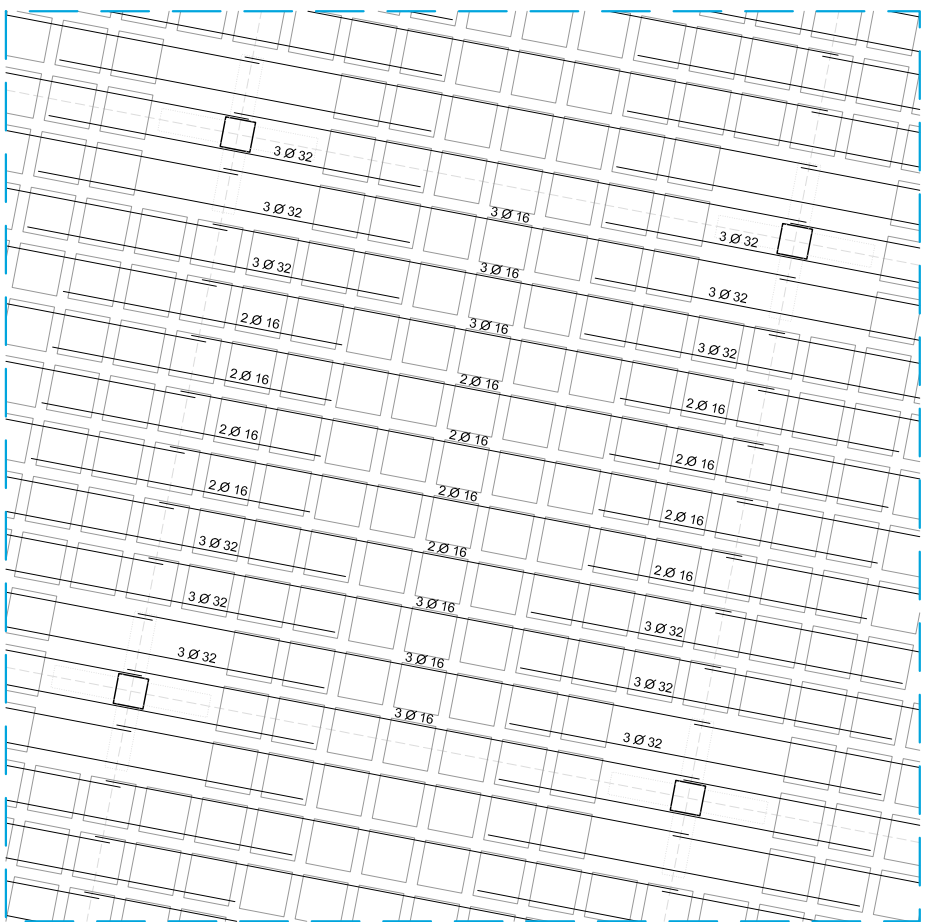
biga perimetral
 $a = b = 35 \text{ cm.}$
 $As = 8 \text{ } \varnothing 6 \text{ mm.}$
 Cercol = $1 \text{ } \varnothing 8 \text{ mm.}$
 cada 12 cm.

E: 1/10

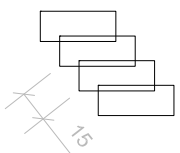
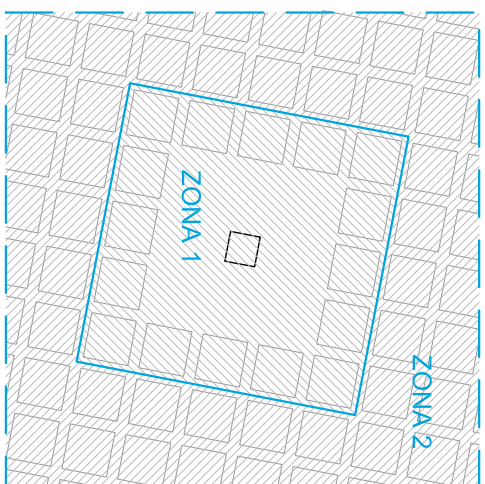
PLANTA TRANSVERSAL
 E: 1/200



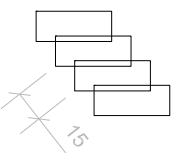
ARMAT TRANSVERSAL
 E: 1/50



ARMAT TALLANTS
 E: 1/50



ZONA 1
 Cercol = $1 \text{ } \varnothing 8 \text{ mm.}$
 cada 15 cm.



ZONA 2
 Cercol = $1 \text{ } \varnothing 6 \text{ mm.}$
 cada 15 cm.

