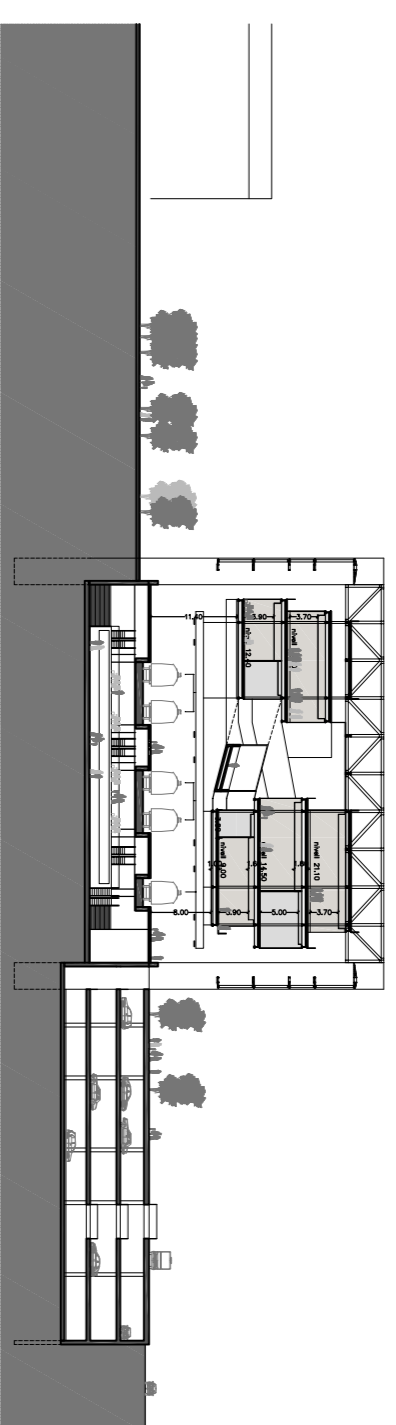
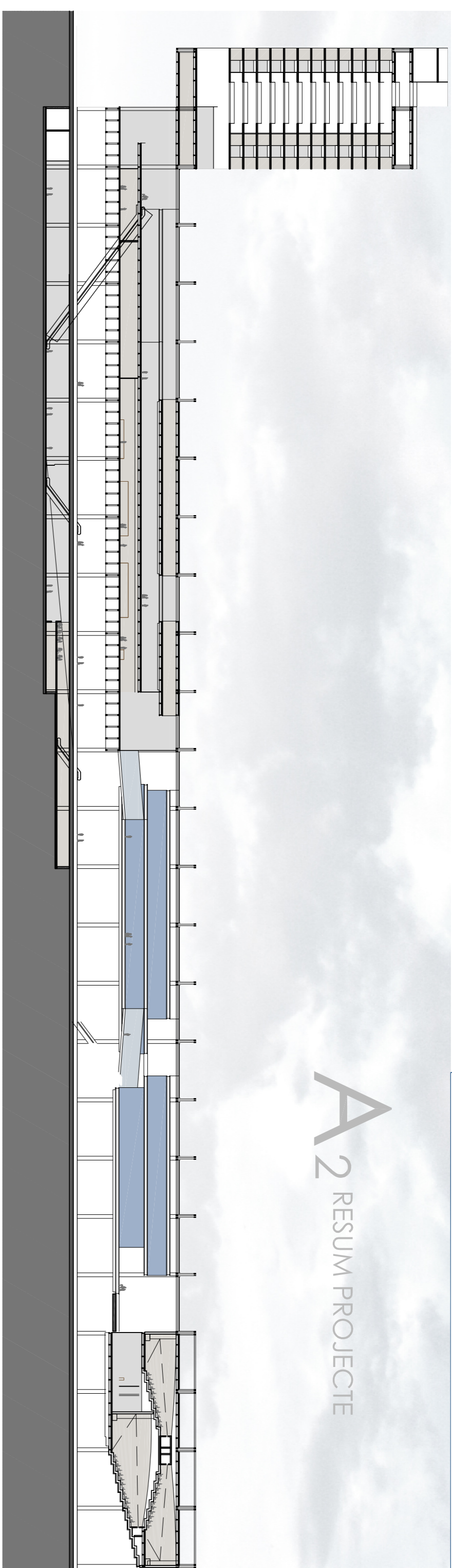


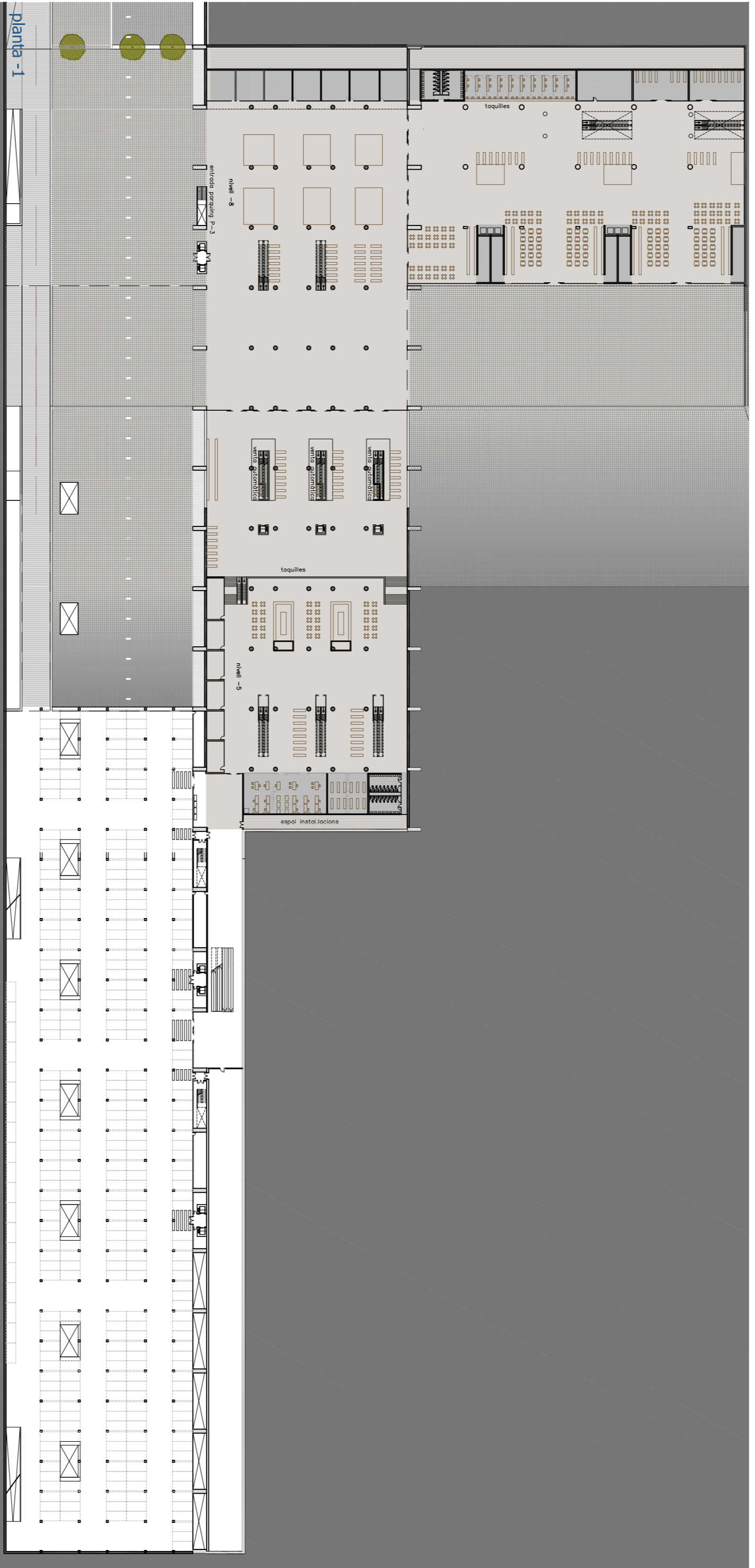
Vista Interior



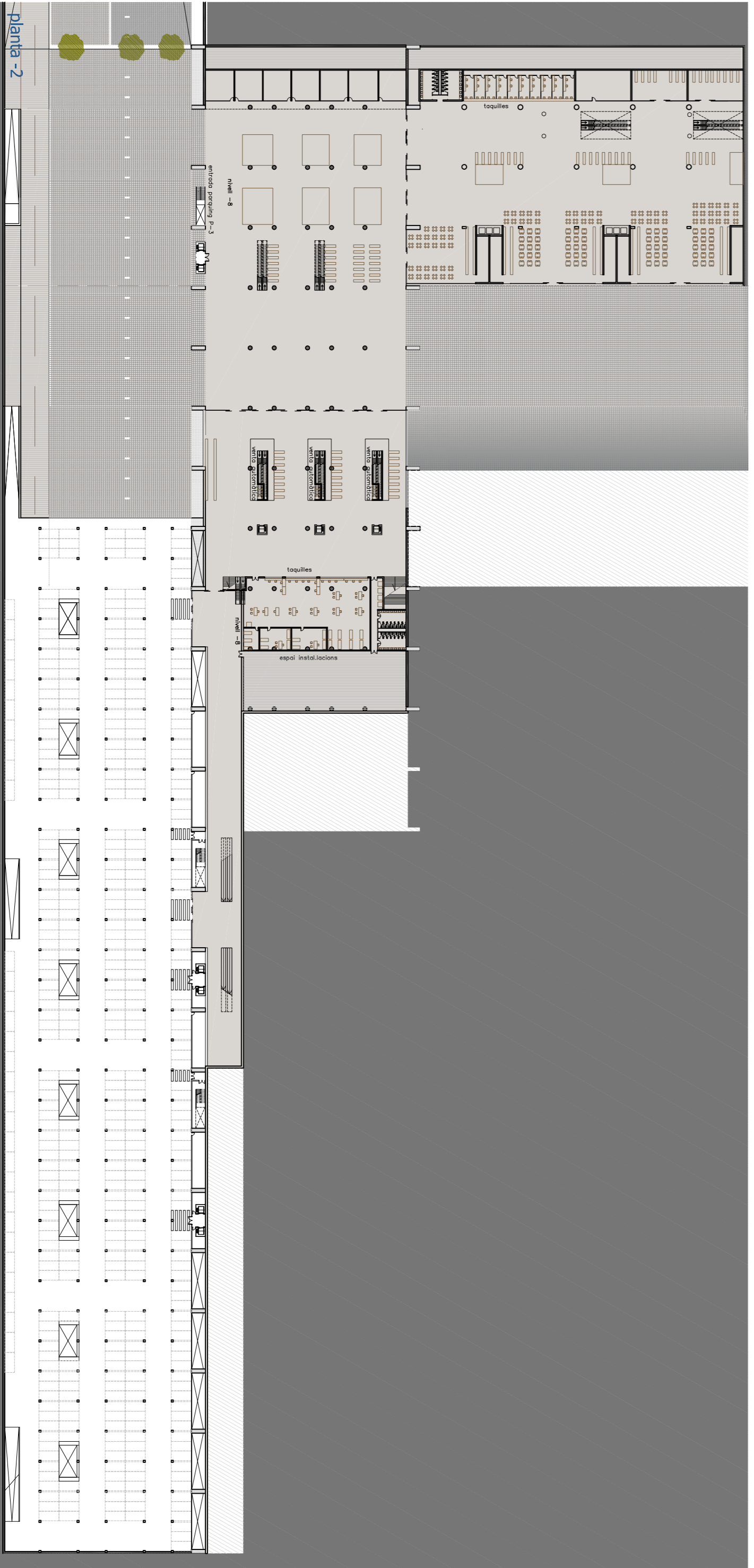
Secció transversal



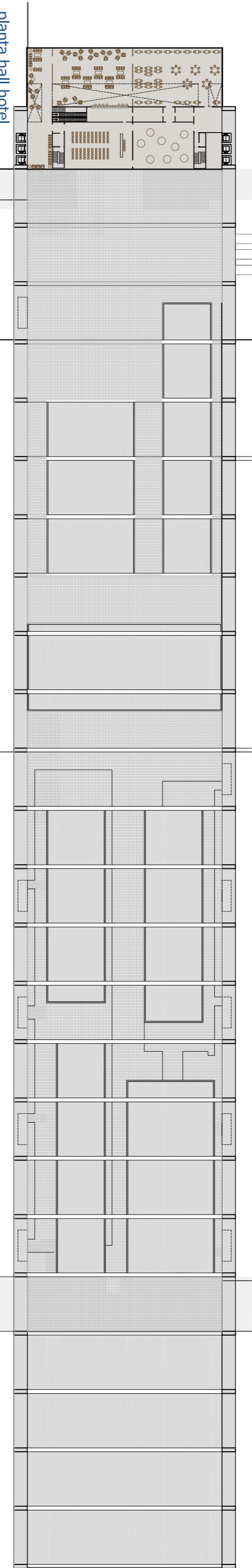
Secció longitudinal



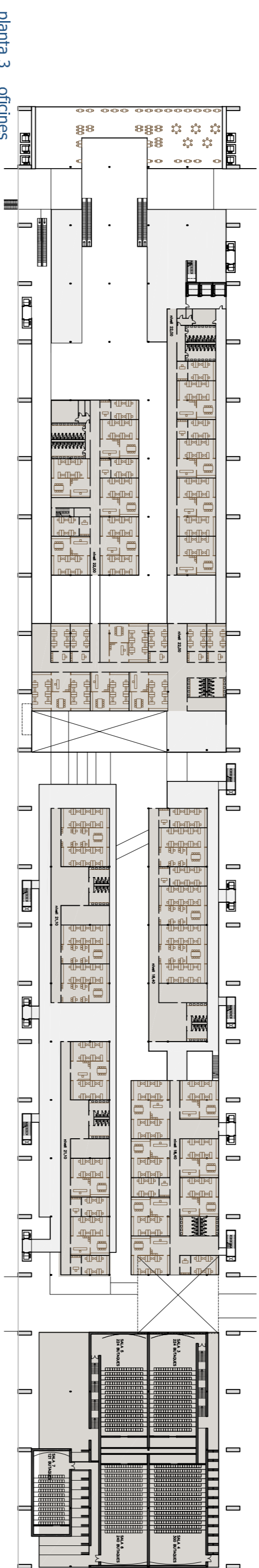
planta 1



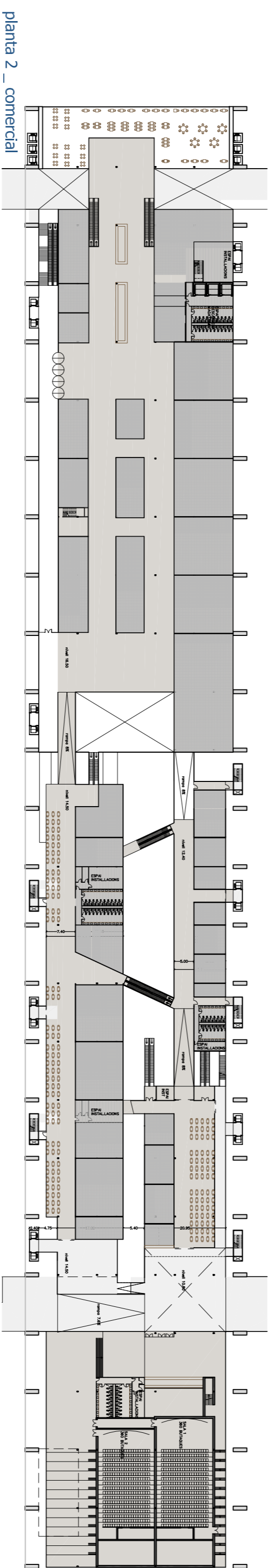
planta 2



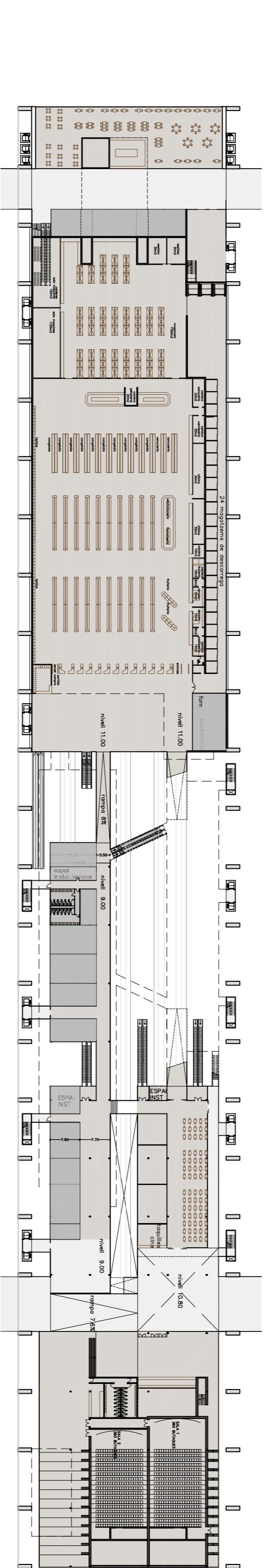
planta hall hotel



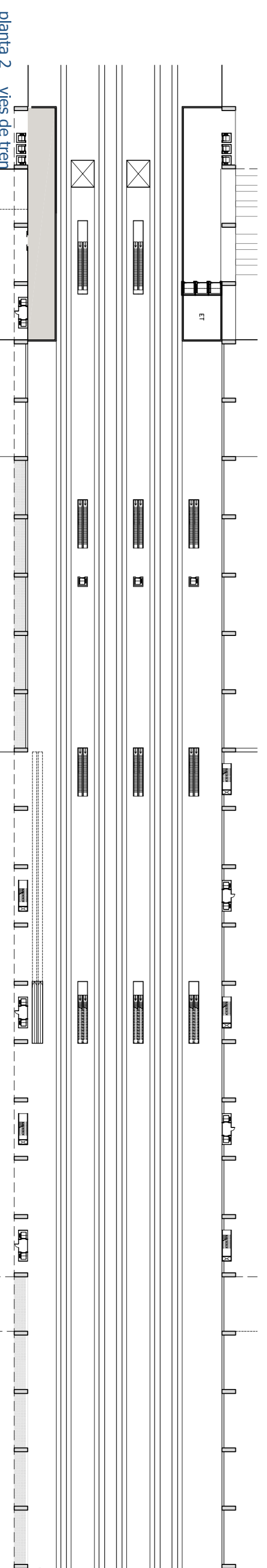
planta 3 - ofices



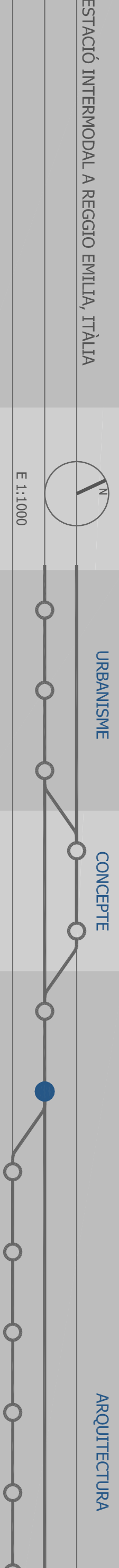
planta 2 - comercial



planta 2 - comercial, hipermercà, cinemes



planta 2 - vies de tren

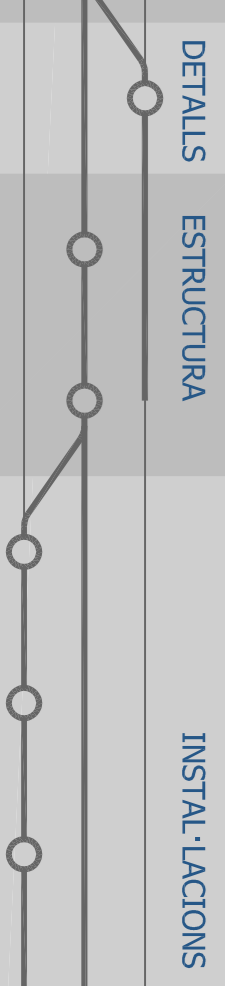


ESTACIÓ INTERMODAL A REGGIO EMILIA, ITALIA

URBANISME

CONCEPTE

ARQUITECTURA



DETAILS

ESTRUCTURA

INSTAL·LACIONS