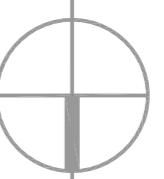
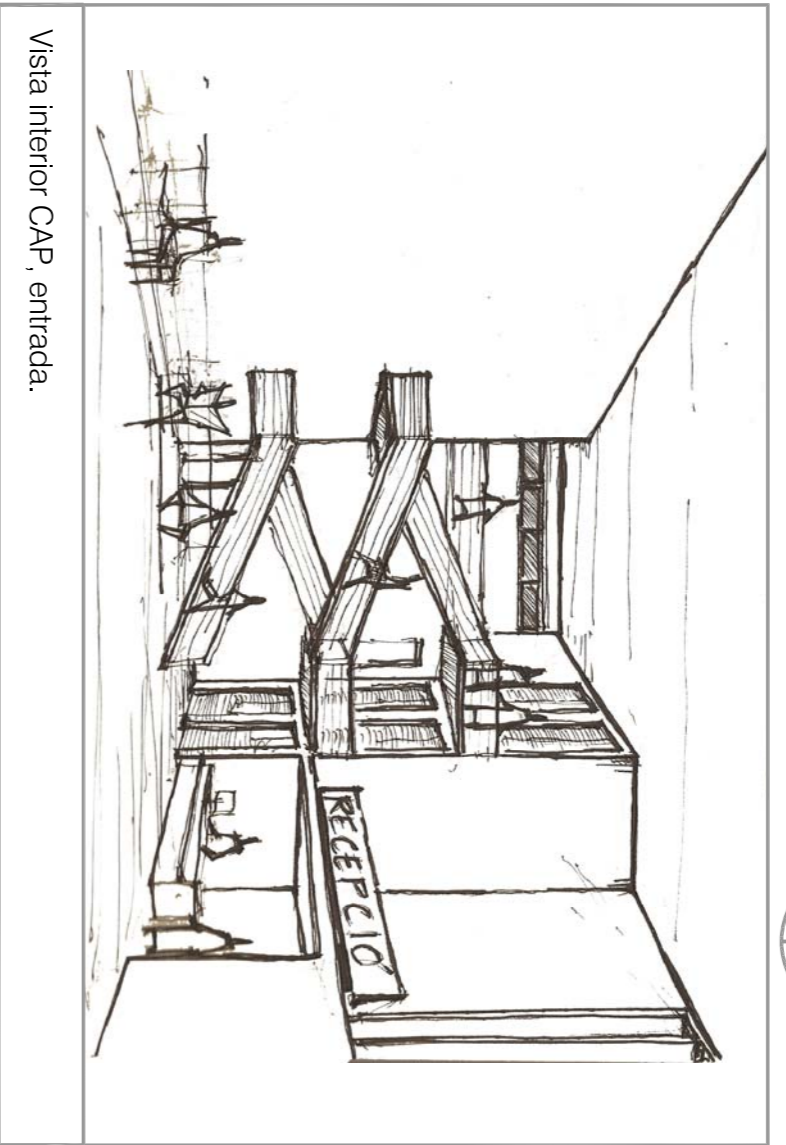
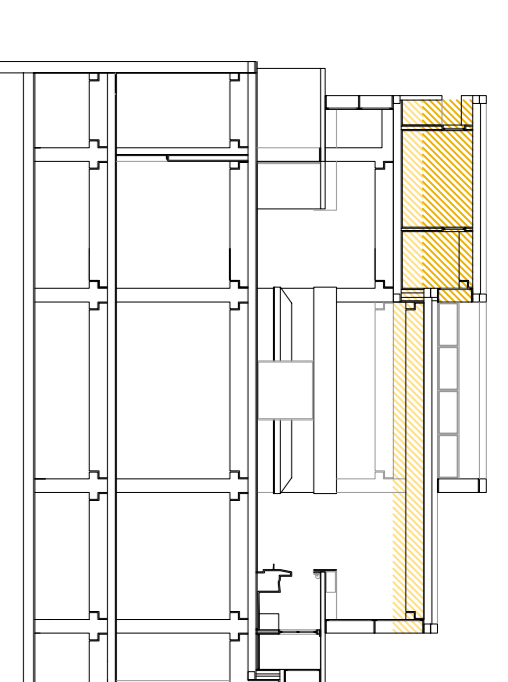


3.5

proposta



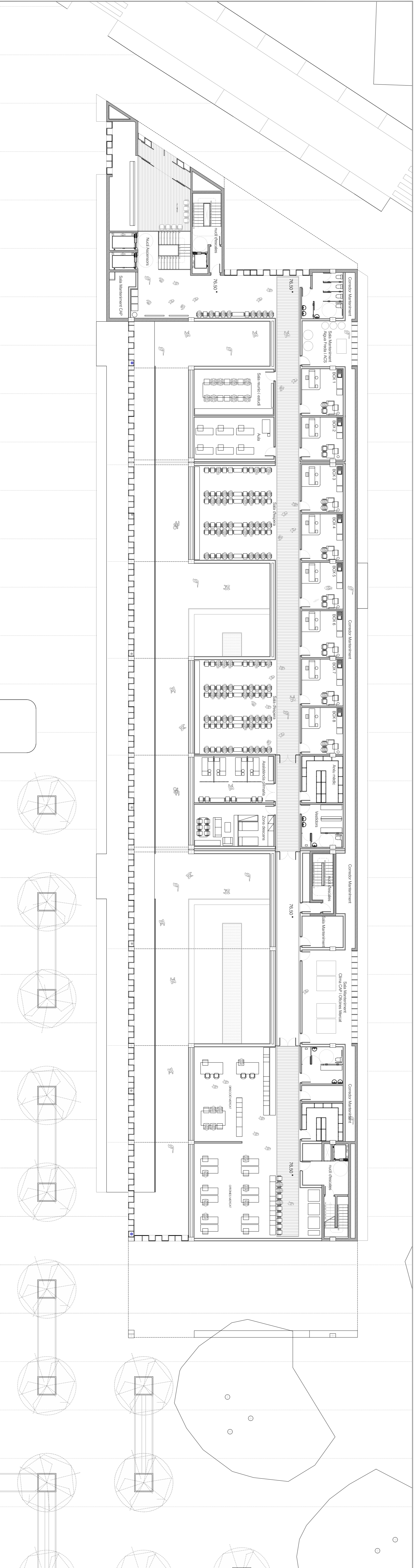
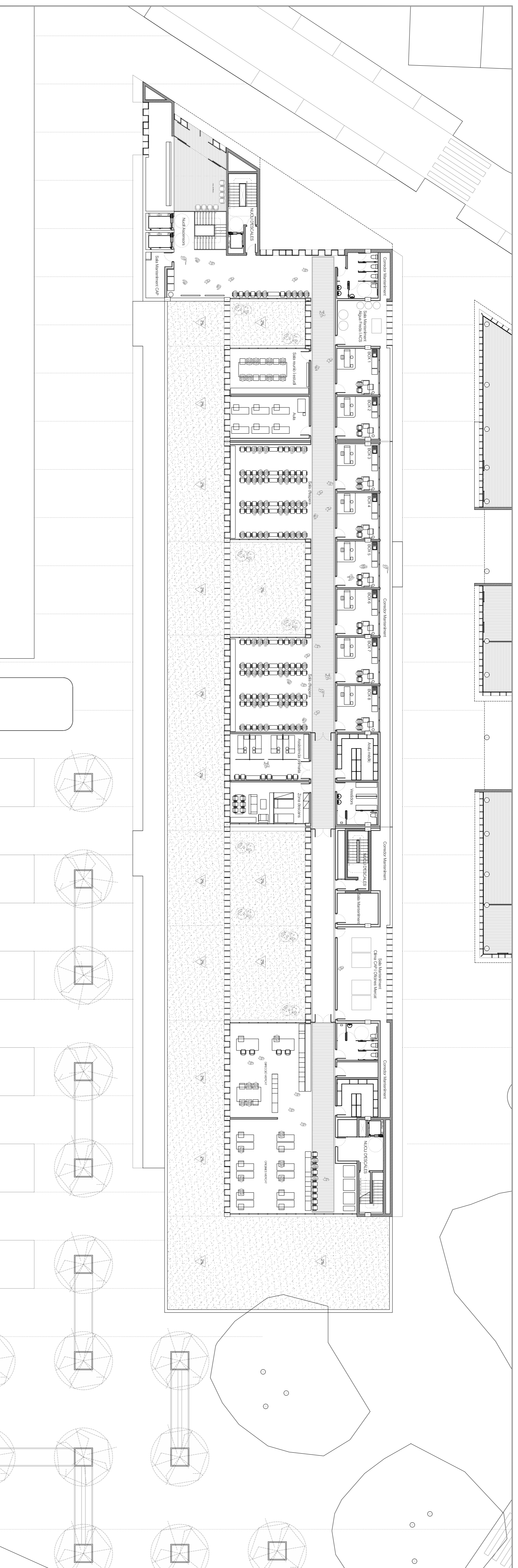
PLANTES CAP escala 1:200 i 1:250



Vista interior CAP, entrada.



Vista interior CAP, sala despesa.



- anàlisis 1 2 3 4 5 6 7 8 9 10 11 12 13 14 15 16 17 18 19 20 21 22 23 24 25 26 27 28 29
 - Intencions
 - proposta
 - construcció
 - estructura
 - instal·lacions
- Escola Tècnica Superior d'Arquitectura del Vallès Q. Tardor Curs 2007/08
- Raúl Bañón Tomàs**
- Mercat i C.A.P a Cerdanyola del Vallès**
- M | C C**