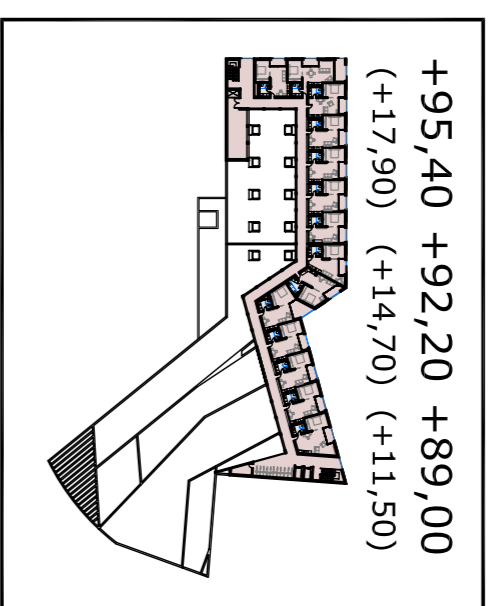
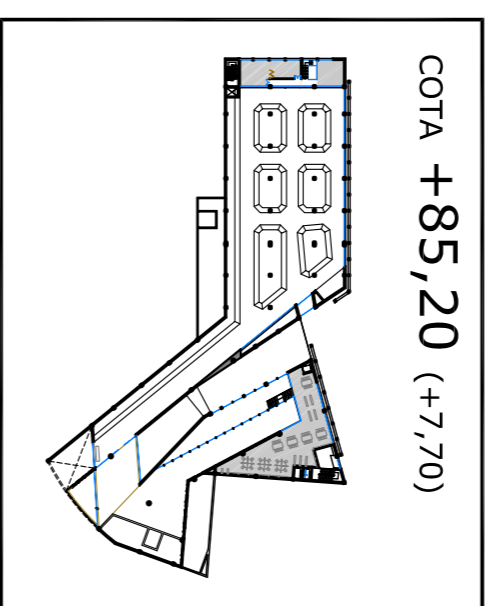


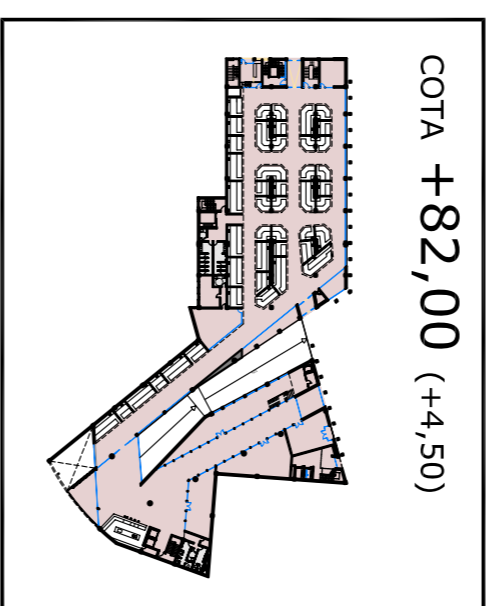
COTA +97,60 (+21,10)



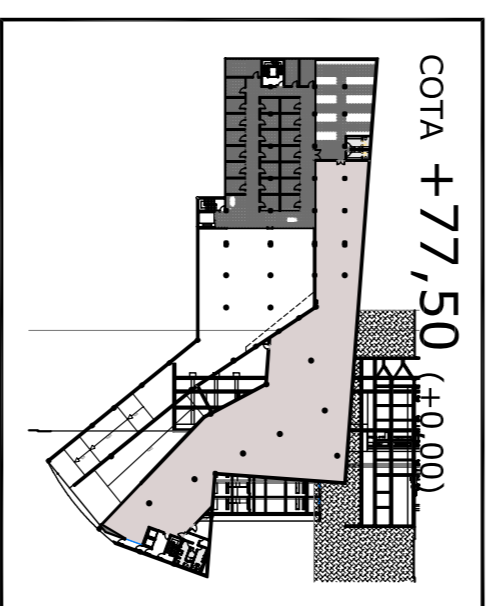
+95,40 +92,20 +89,00
(+17,90) (+14,70) (+11,50)



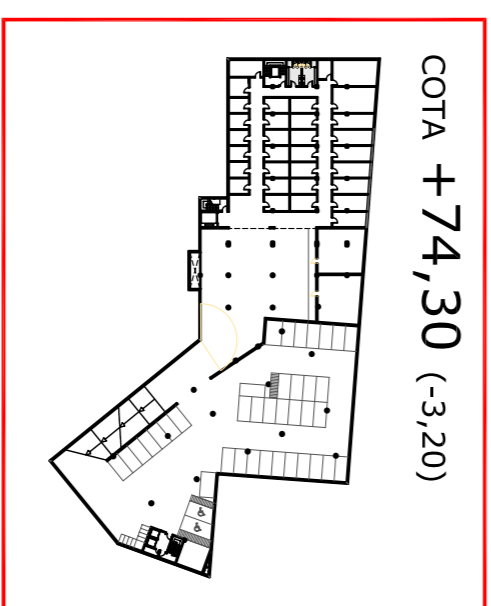
COTA +85,20 (+7,70)



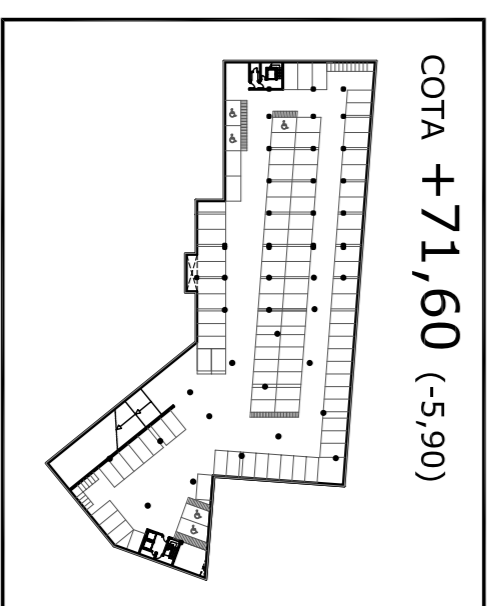
COTA +82,00 (+4,50)



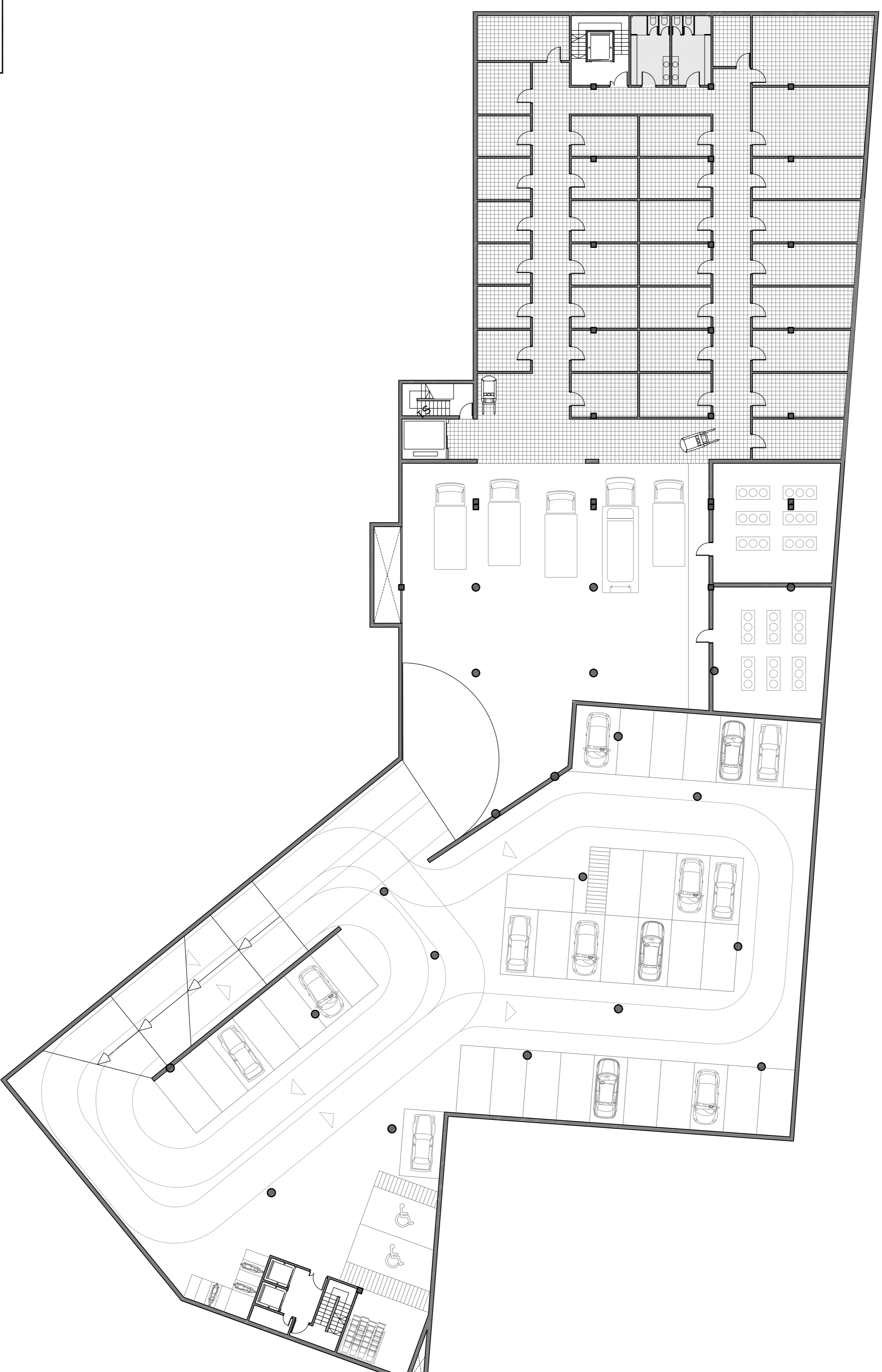
COTA +77,50 (+0,00)



COTA +74,30 (-3,20)



COTA +71,60 (-5,90)



SUPERFÍCIES

| | |
|---------------------|------------------------|
| PLANTA SOTERRANI -1 | |
| APARCAMENTS | 1503,63 M ² |
| DESCÀRREGA | 1658,67 M ² |
| INSTAL·LACIONS | 166,00 M ² |
| Total | 3328,30 M ² |