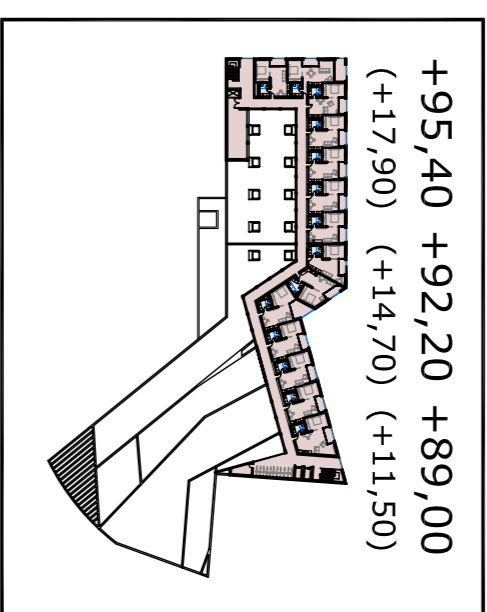
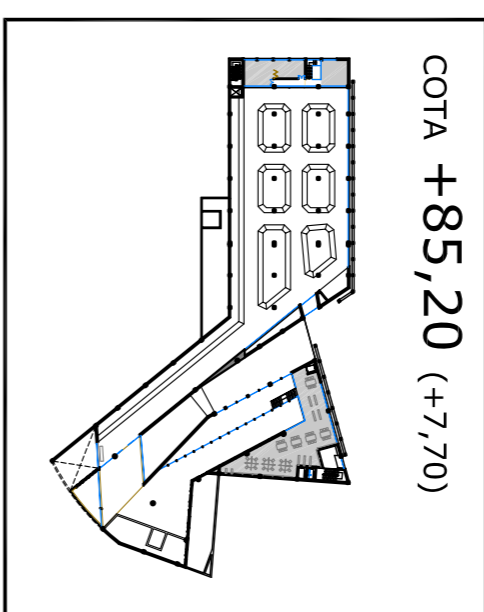


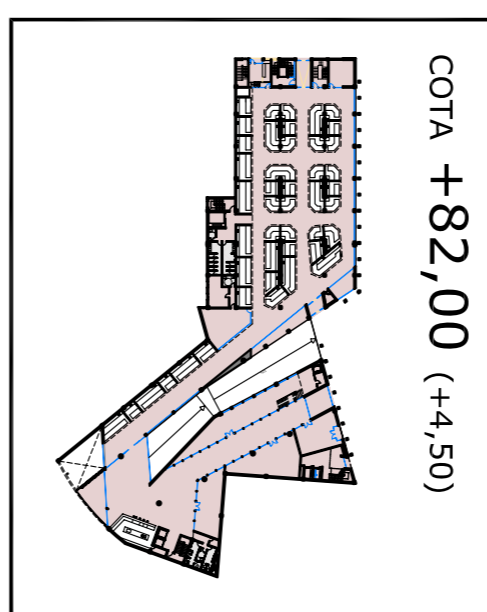
COTA +97,60 (+21,10)



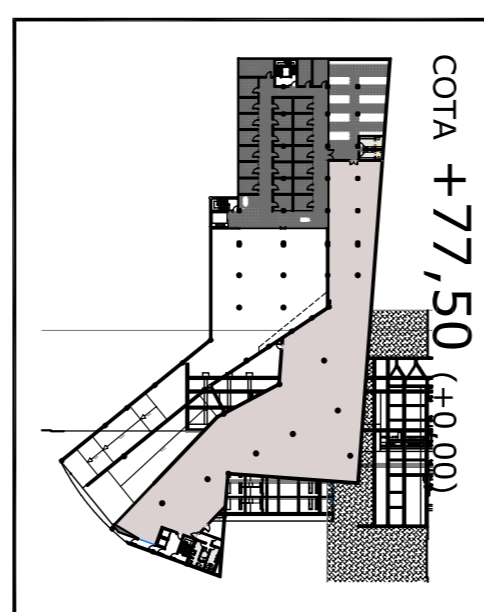
+95,40 +92,20 +89,00
(+17,90) (+14,70) (+11,50)



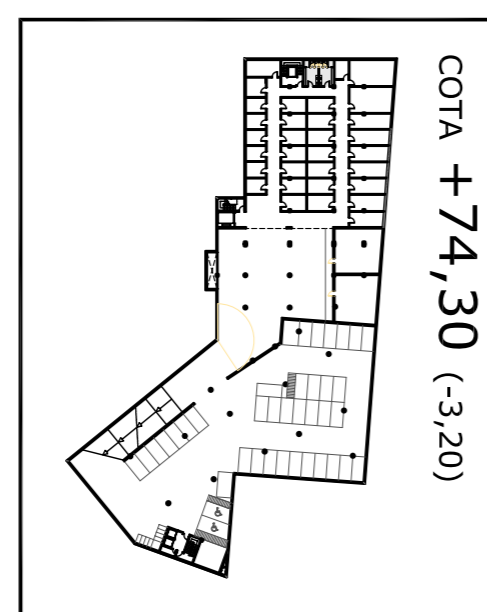
COTA +85,20 (+7,70)



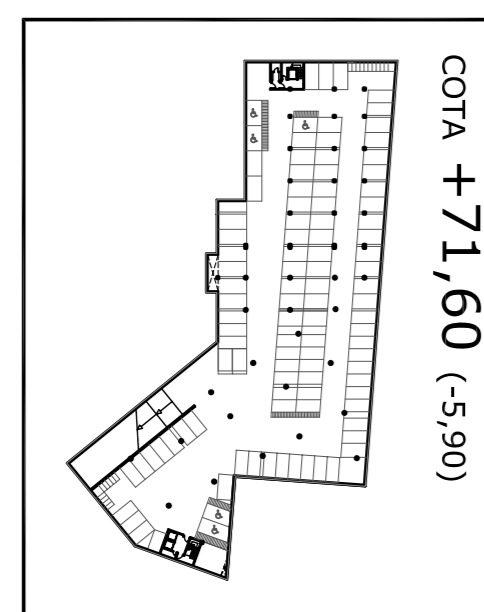
COTA +82,00 (+4,50)



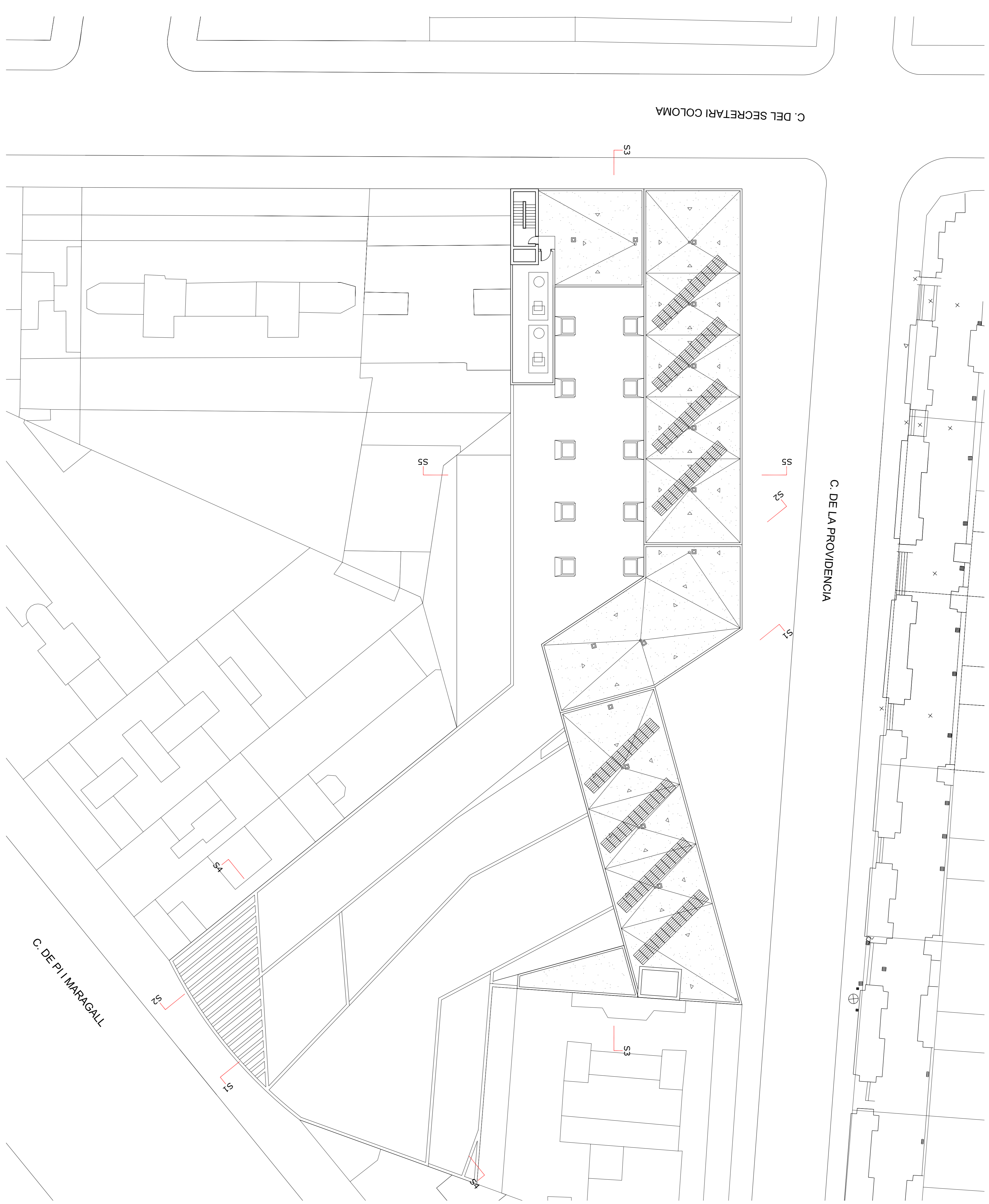
COTA +77,50 (+0,00)



COTA +74,30 (-3,20)



COTA +71,60 (-5,90)



C. DEL SECRETARI COLOMA

C. DE LA PROVIDENCIA

C. DE PI I MARAGALL