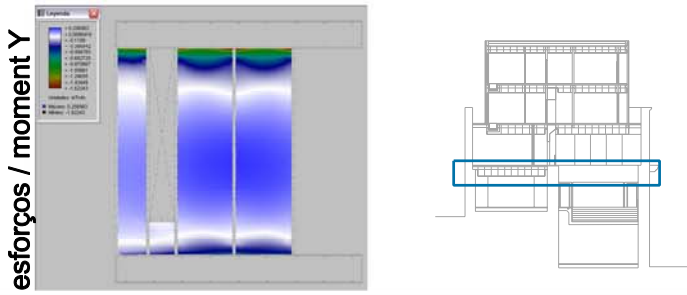
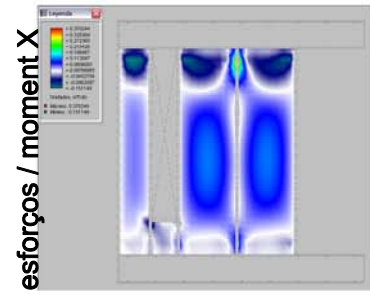
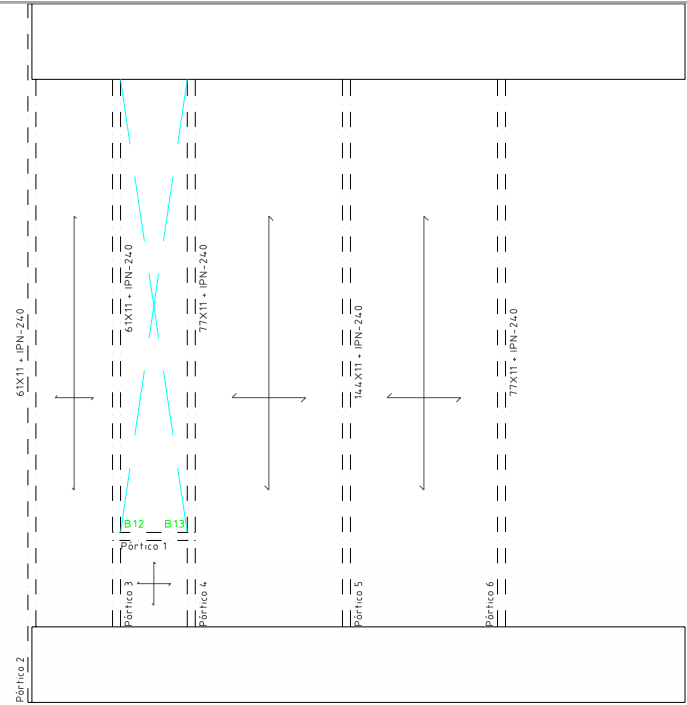
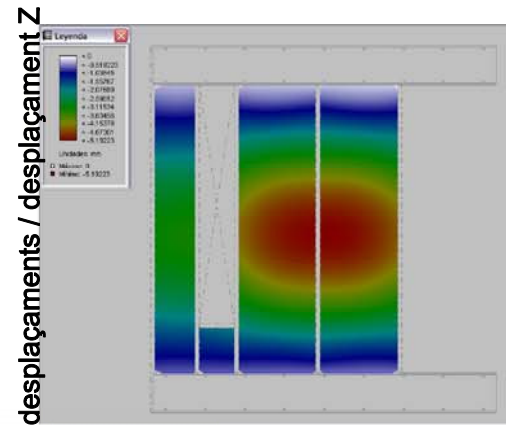
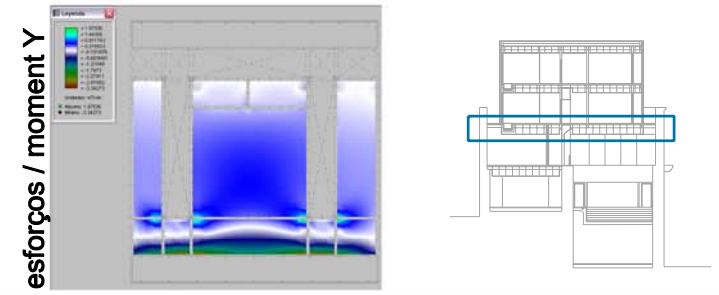
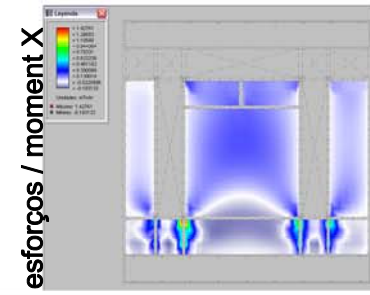
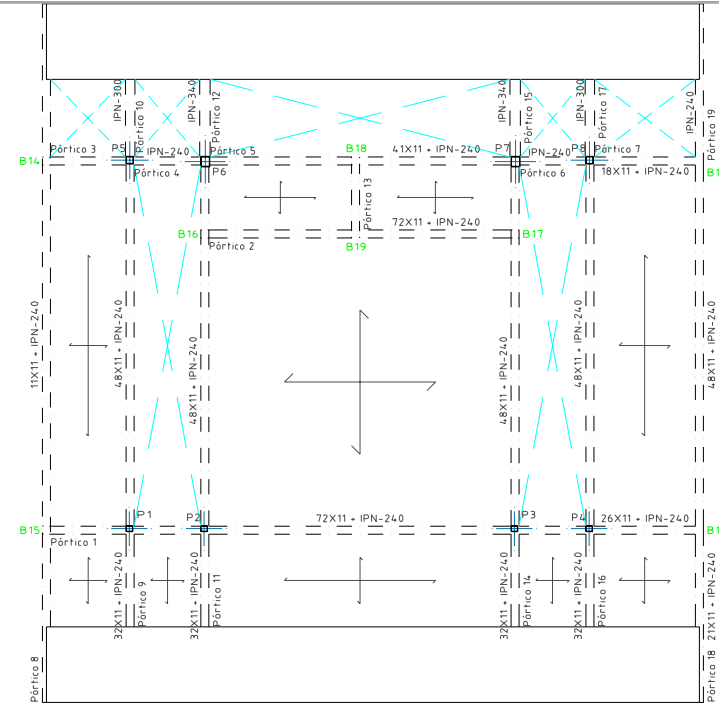
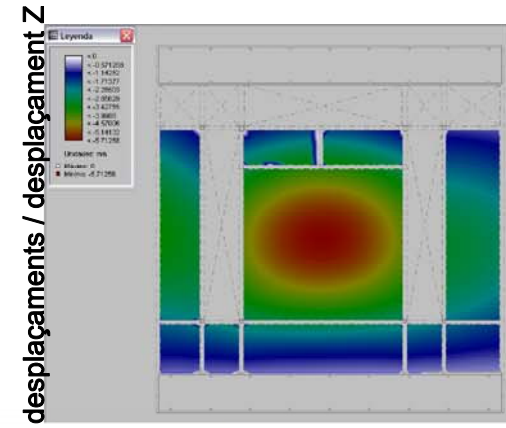


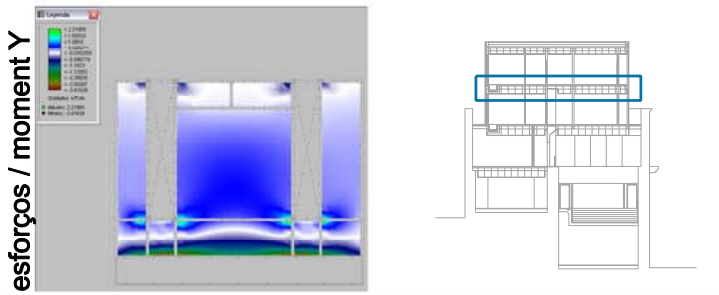
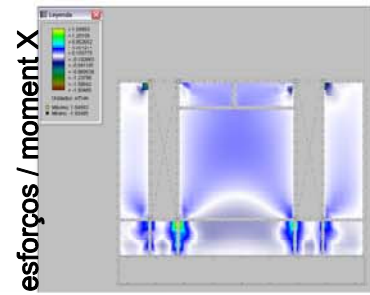
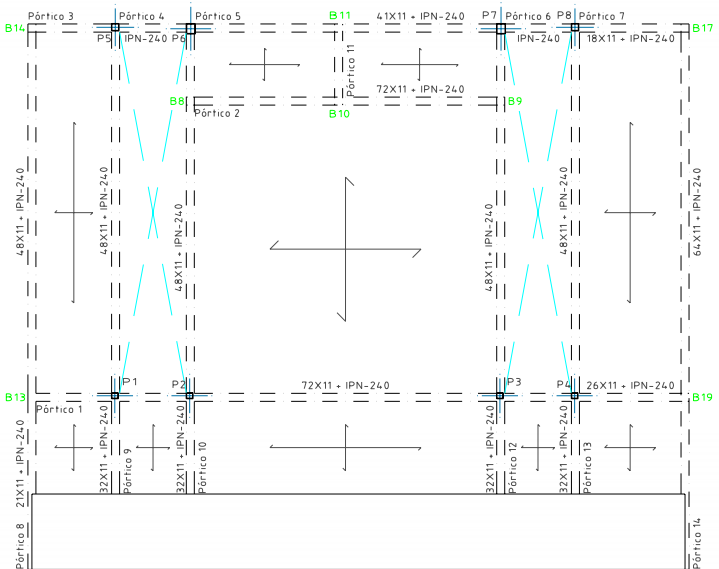
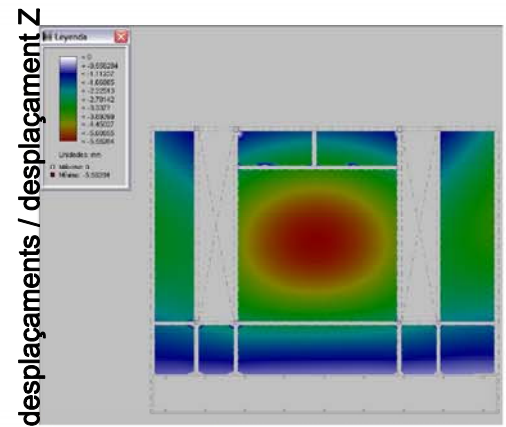
## Sostre planta Baixa



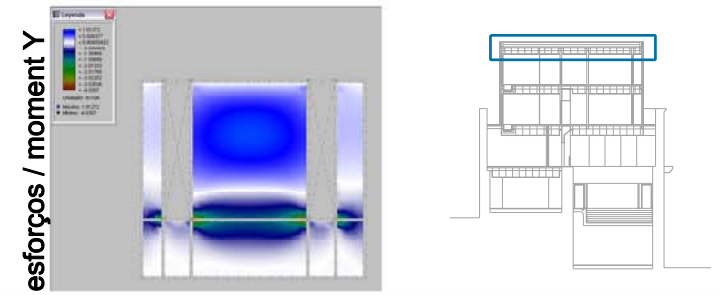
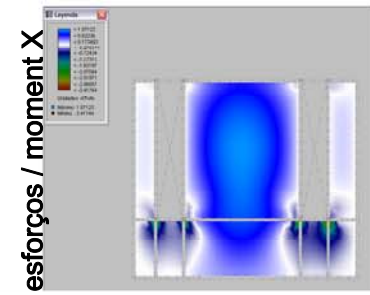
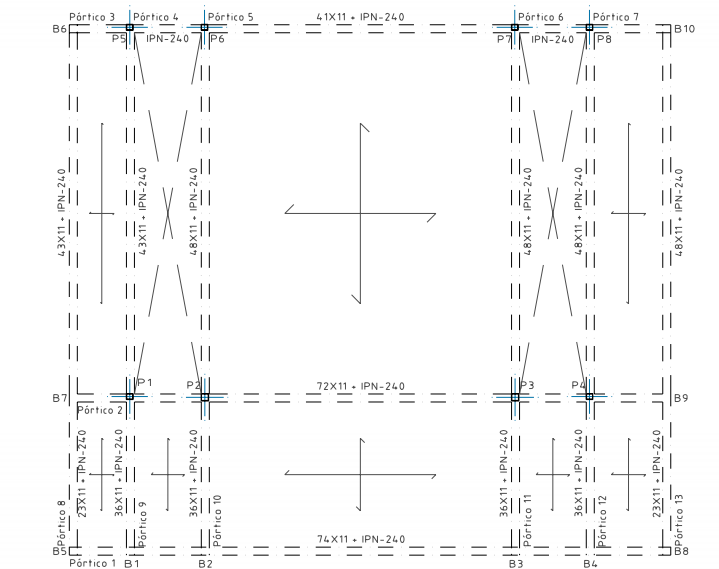
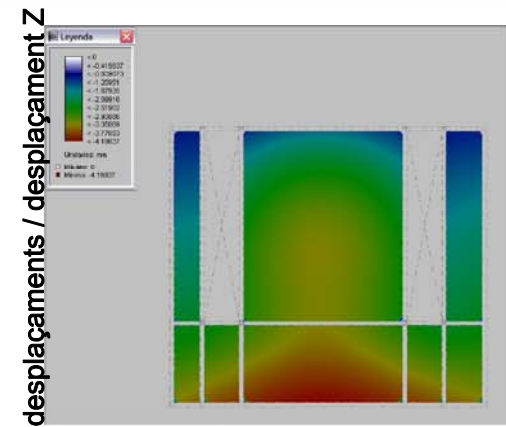
## Sostre planta Primera



## Sostre planta Segona



## Sostre planta Coberta



### Característiques Forjat

#### CÀRREGUES CONSIDERADES

**Coberta**

S. permanents	
Substrat:	519 Kg/m <sup>2</sup>
Drenatge:	190 Kg/m <sup>2</sup>
Aïllament:	11 Kg/m <sup>2</sup>
Impermeabilització:	15 Kg/m <sup>2</sup>
Formigó de pendents: 2200 Kg/m <sup>2</sup> x 0,1 =	220 Kg/m <sup>2</sup>
<b>Total:</b>	<b>955,00 Kg/m<sup>2</sup> = 0,955 T/m<sup>2</sup></b>

**C. variables**

S. Neu:	60 Kg/m <sup>2</sup>
S. Manteniment:	100 Kg/m <sup>2</sup>
<b>Total:</b>	<b>160 Kg/m<sup>2</sup> = 0,160 T/m<sup>2</sup></b>

**Habitacions**

S. permanents	
Parquet: 40 Kg/m <sup>2</sup> =	0,04 T/m <sup>2</sup>
S. variables	
200 ús + 100 envans =	300 Kg/m <sup>2</sup>
Instal·lacions 100 Kg/m <sup>2</sup>	
<b>Total:</b>	<b>400 Kg/m<sup>2</sup> = 0,40 T/m<sup>2</sup></b>

**Passadissos**

S. permanents	
Parquet: 40 Kg/m <sup>2</sup> =	0,04 T/m <sup>2</sup>
C. variables	
300 ús + 100 envans =	300 Kg/m <sup>2</sup>
Instal·lacions 100 Kg/m <sup>2</sup>	
<b>Total:</b>	<b>500 Kg/m<sup>2</sup> = 0,50 T/m<sup>2</sup></b>

**Passadissos**

S. permanents	
Parquet: 40 Kg/m <sup>2</sup> =	0,04 T/m <sup>2</sup>
C. variables	
300 ús + 100 envans =	300 Kg/m <sup>2</sup>
Instal·lacions 100 Kg/m <sup>2</sup>	
<b>Total:</b>	<b>500 Kg/m<sup>2</sup> = 0,50 T/m<sup>2</sup></b>

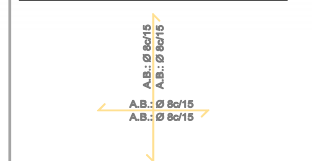
**Cabines**

S. permanents	
Parquet: 40 Kg/m <sup>2</sup> =	0,04 T/m <sup>2</sup>
C. variables	
300 ús + 100 envans =	300 Kg/m <sup>2</sup>
Instal·lacions 100 Kg/m <sup>2</sup>	
<b>Total:</b>	<b>500 Kg/m<sup>2</sup> = 0,50 T/m<sup>2</sup></b>

#### TIPUS DE FORJAT

Llosa col·laborant  
 Cantell: 11 cm  
 Formigó: HA-25, Control Estadístic  
 Acers en sostres: B 500 S, Control Normal

#### ARMAT DE BASE



#### QUADRE DE PILARS

