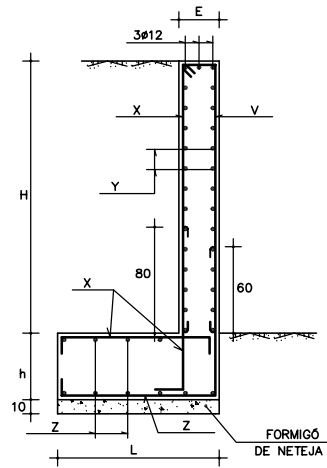
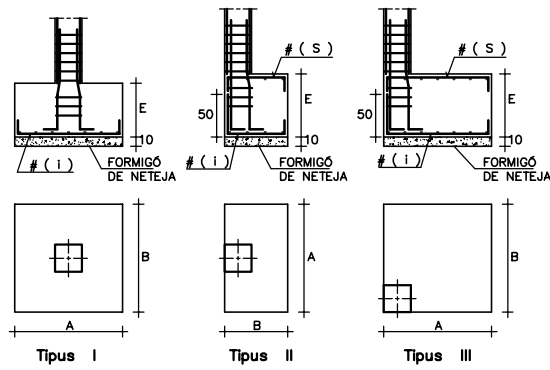


H	N	E	L	X	Y	Z	V
426	50	30	90	#12x20	#12x20	#12x10	#12x20
456	50	30	90	#12x20	#12x20	#12x10	#12x20



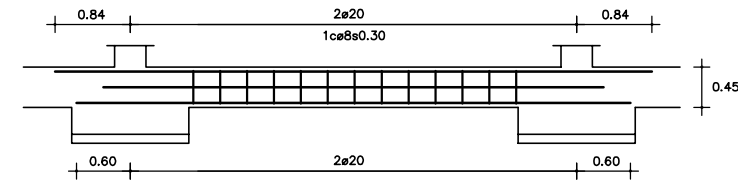
DETALL SECCIÓ MURS



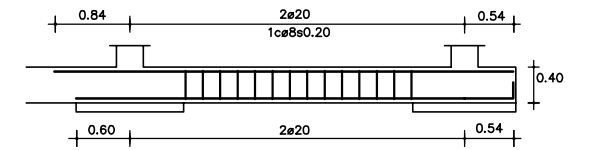
DETALL TIPUS DE SABATES

QUADRE DE SABATES

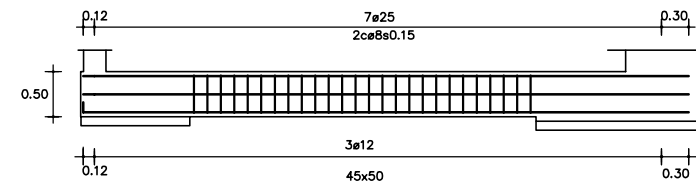
Nº PILAR	DIMENSIONS			ARMAT EN TOTS DOS SENTITS	TIPUS
	A	B	E		
5-7	285	100	40	# 12 s 20 (s) # 12 s 20 (i)	I
13-11	316	100	40	# 12 s 20 (s) # 12 s 20 (i)	I
18	100	200	45	# 16 s 20 (i)	II
20-22-24-41 42-43-57-59 62-84-75	100	100	40	# 12 s 20 (i)	I
32	100	100	40	# 16 s 25 (i)	III
35	200	100	45	# 16 s 15 (i)	II
36	100	100	40	# 16 s 25 (i)	III
39	100	200	45	# 16 s 15 (i)	II
77	100	200	45	# 16 s 15 (i)	II



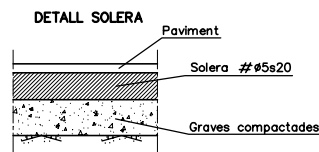
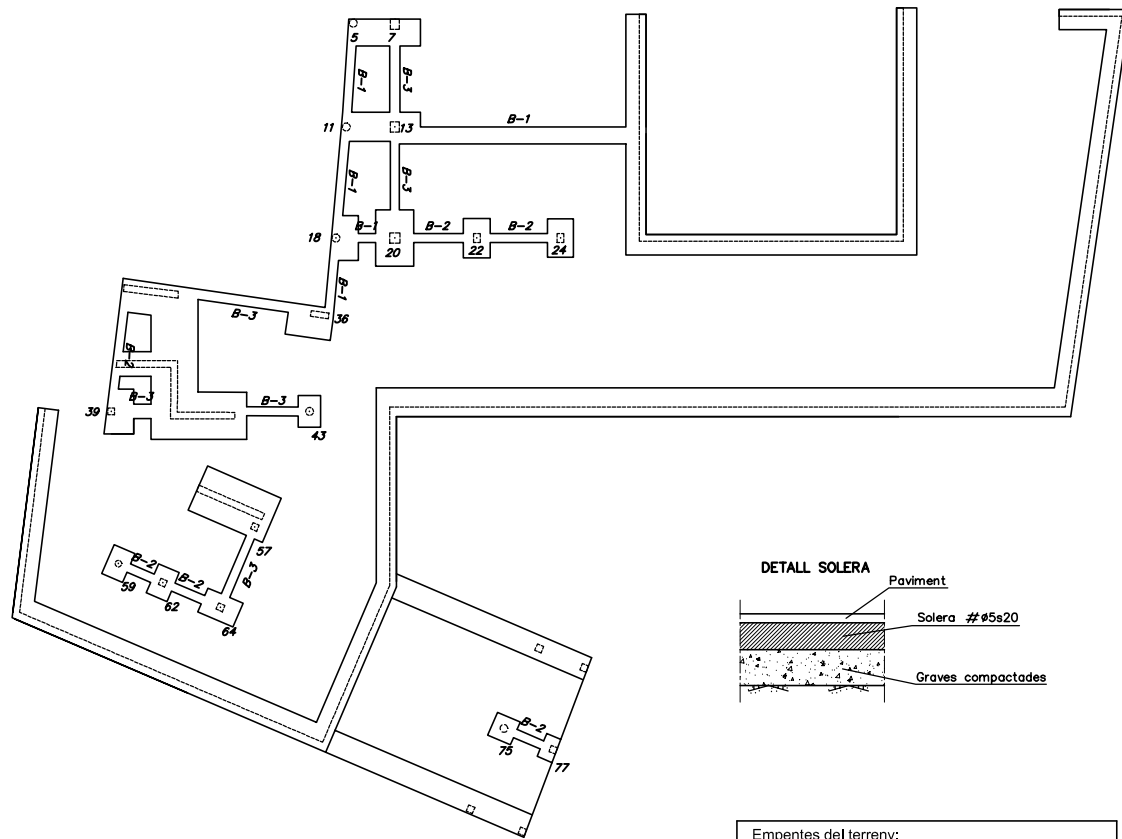
DETALL BIGA B-1



DETALL BIGA B-2



DETALL BIGA B-3



Empentes del terreny:	
$\phi = 35^\circ$ (angle de fregament)	
$C = 0$ (cohesió)	
$\gamma_{nat.} = 20 \text{ KN/m}^3$ (pes específic)	
Tensió admissible:	
$S_1 = 300 \text{ KN/m}^2$	
Característiques dels materials:	
Acer	B500S
Formigó	HA-25-B-20-Ia

TIPUS 1	HOR 70x70 87 2x2ø20 B/Hx1ø20/2x1ø20 1caø8s0.30
TIPUS 2	HOR 70x45 129, 134 2x2ø20 B/Hx1ø20/2x1ø20 1caø8s0.30
TIPUS 3	HOR 25x80 36 2x2ø16 B/Hx2ø16/2x2ø16 1caø8s0.15
TIPUS 4	HOR 40x45 130,131,7,13,135,137 2x2ø16 B/Hx1ø16/2x1ø16 1caø8s0.20
TIPUS 5	HOR 30x40 22,24,104 2x2ø16 1caø8s0.20

TIPUS 6	HOR 30x40 183,184,84,85,86, 95,96,97,98,99,100,101,145,146 2x2ø25 24x1caø8s0.20
TIPUS 7	HOR 45x45 20 2x2ø16 B/Hx1ø16/2x1ø16 1caø8s0.20
TIPUS 8	HOR 30x30 39,102,64,109,113,157, 75,77,123,124,57 2x2ø16 16x1caø8s0.20
TIPUS 9	HOR 30x30 179,81,180,83,62 2x2ø25 19x1caø8s0.20
TIPUS 10	CR 35 106 6ø16 18x1caø8s0.20

TIPUS 11	CR 30 140,147,59,154,156 6ø16 18x1caø8s0.20
TIPUS 12	CR 35 127,11,18,106,111,118 6ø16 24x1caø8s0.20
TIPUS 13	CR 40 94 6ø16 12x1caø8s0.20

QUADRE DE PILARS