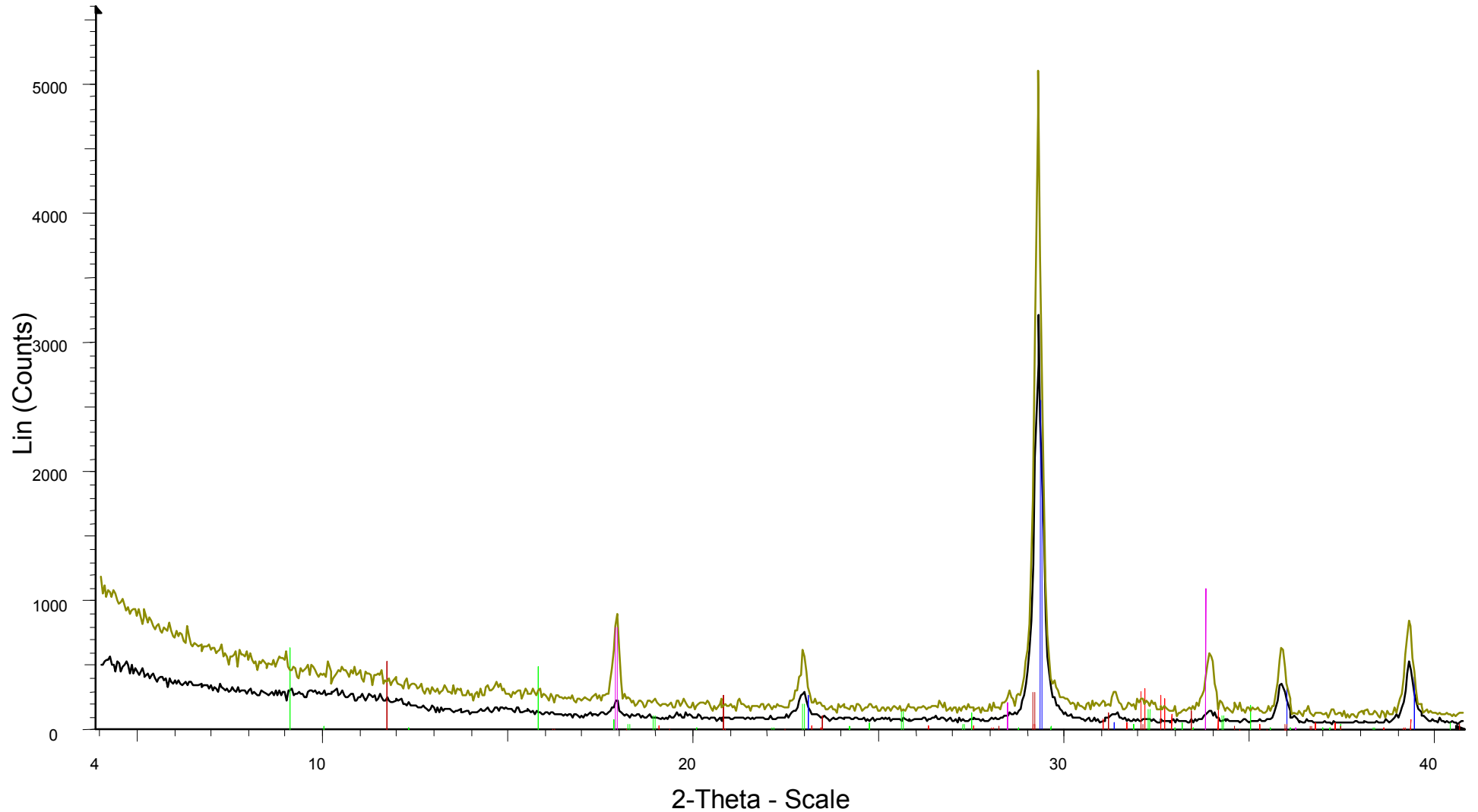


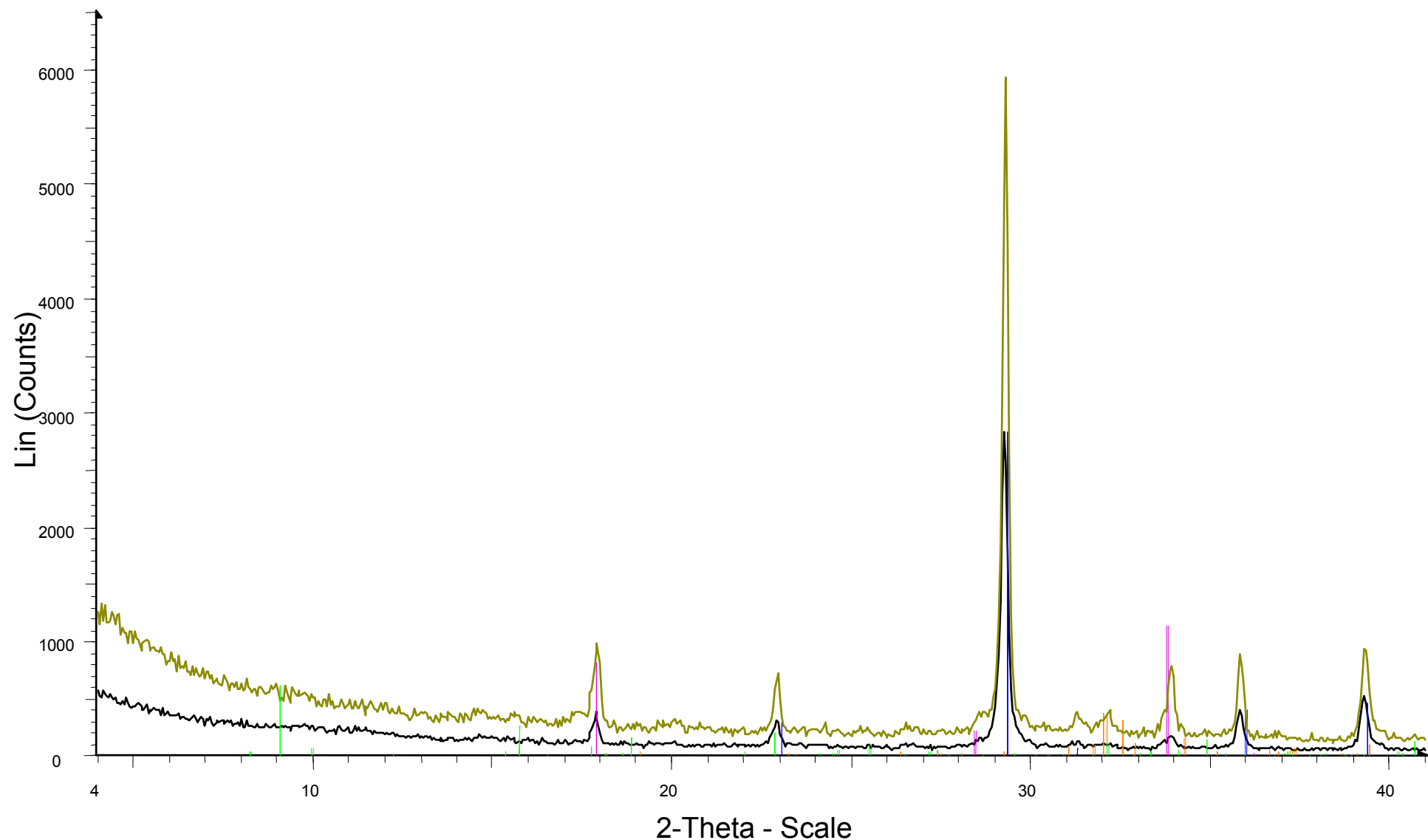
ANEJO

Agua de mar



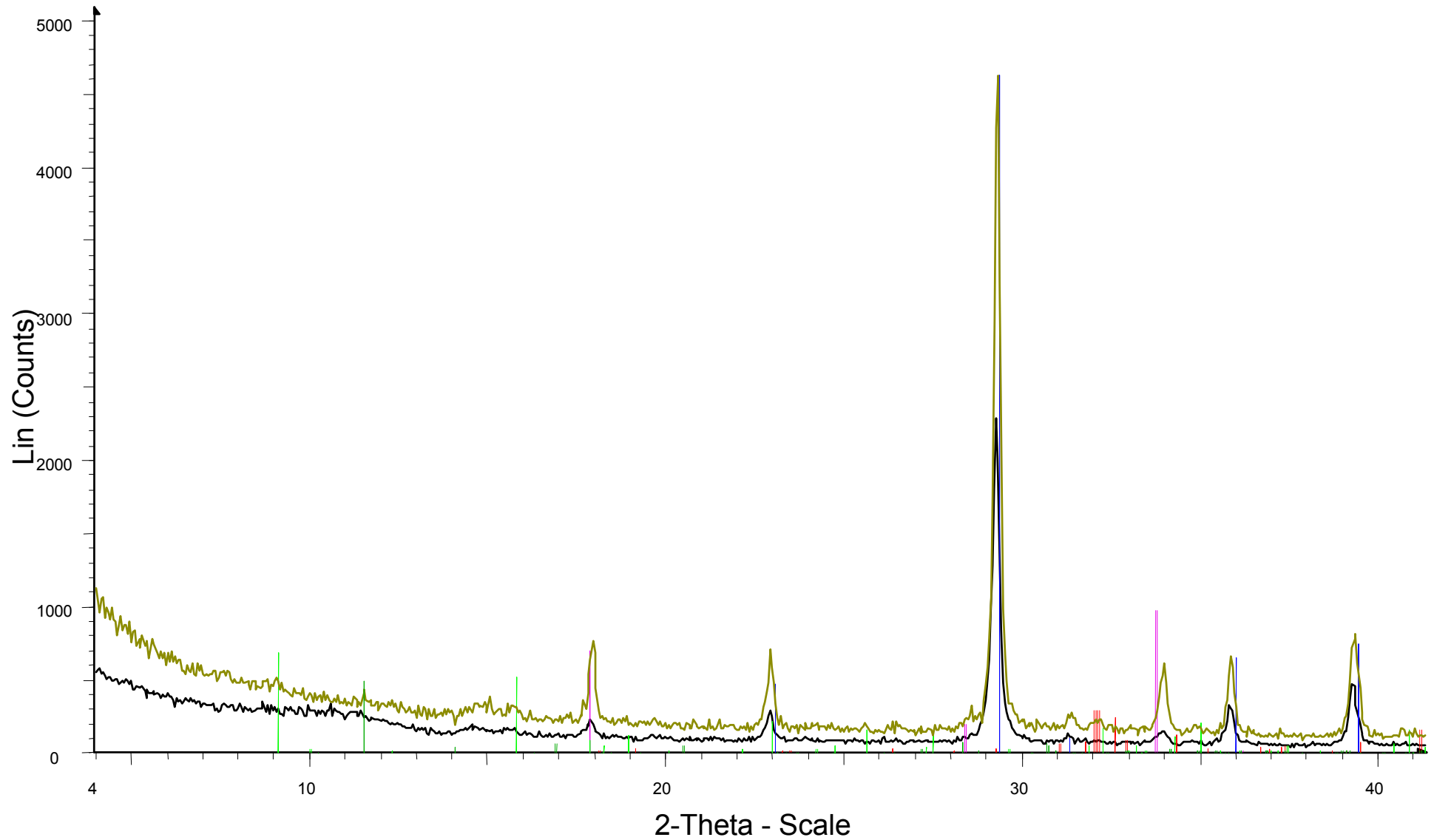
- File: 2271.raw
Operations: Import
- File: 10a.raw
Operations: Y Scale Mul 2.000 | Import
- 86-2339 (C) - Calcite - $\text{Ca}(\text{CO}_3)$ - Y: 50.00 % - d x by: 1. - WL: 1.5406 - Hexagonal (Rh) - a 4.9840
- 87-0674 (C) - Portlandite, syn - $\text{Ca}(\text{OH})_2$ - Y: 21.44 % - d x by: 1.0083 - WL: 1.5406 - Hexagonal -
- 83-0461 (C) - Larnite - $\text{Ca}_2(\text{SiO}_4)$ - Y: 6.25 % - d x by: 1. - WL: 1.5406 - Monoclinic - a 5.50190 - b
- 41-1451 (*) - Ettringite, syn - $\text{Ca}_6\text{Al}_2(\text{SO}_4)_3(\text{OH})_{12}\cdot 26\text{H}_2\text{O}$ - Y: 12.50 % - d x by: 1. - WL: 1.5406 -
- 06-0047 (D) - Gypsum - $\text{CaSO}_4\cdot 2\text{H}_2\text{O}$ - Y: 10.42 % - d x by: 1. - WL: 1.5406 - Monoclinic - a 5.14850 - b

Carbonatación



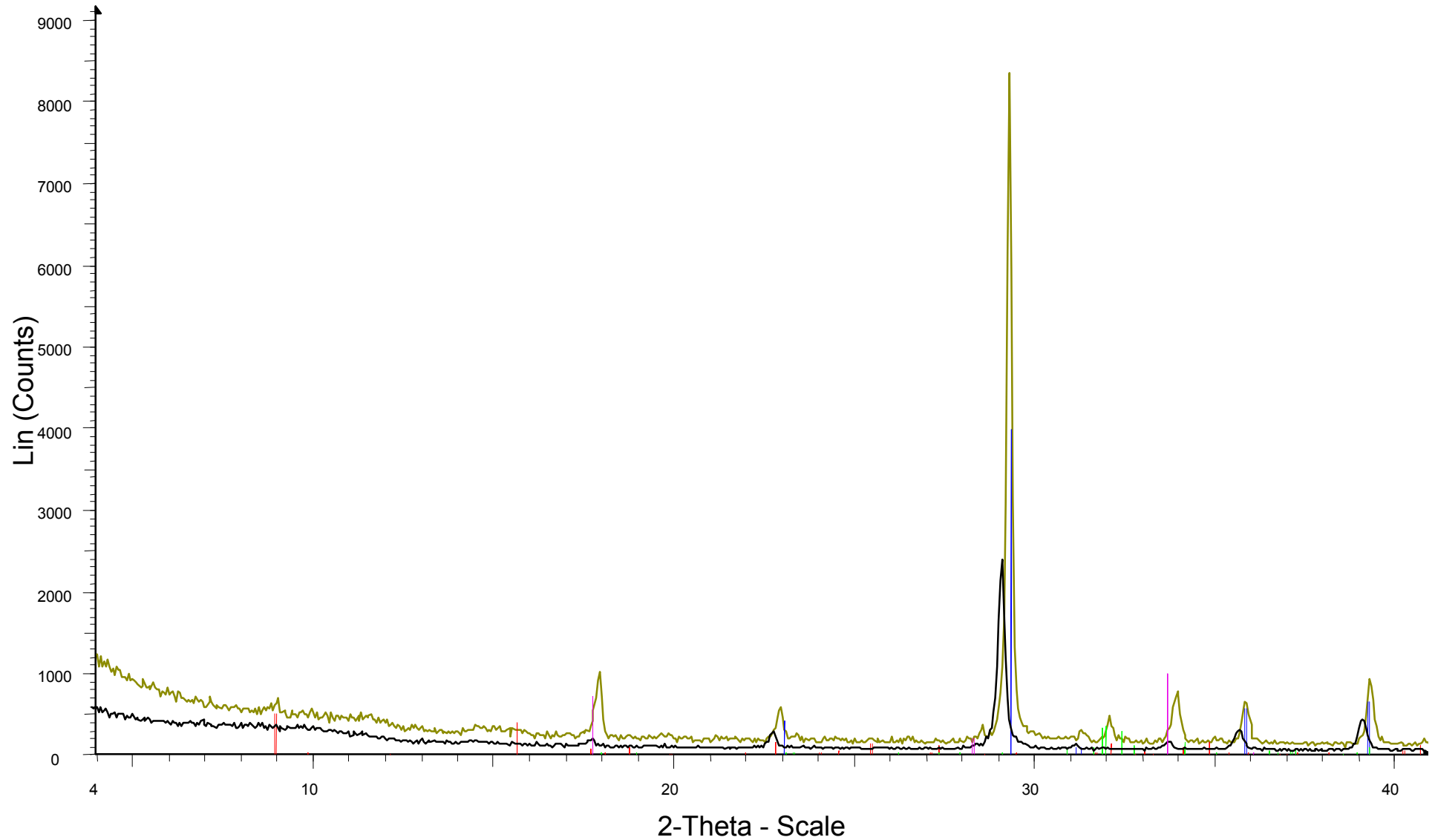
- #C - File: 2272.raw - Type: 2Th/Th unlocked - Start: 3.976 ° - End: 69.976 ° - Step: 0.050 ° - Step time: 3. s - Temp.: 25 °C (Room) - Time Started: 0 s - 2-Theta: 3.976 ° - Theta: 0.000 °
Operations: Import
- 10C - File: 10c.raw - Type: 2Th/Th unlocked - Start: 3.976 ° - End: 69.976 ° - Step: 0.050 ° - Step time: 3. s - Temp.: 25 °C (Room) - Time Started: 0 s - 2-Theta: 3.976 ° - Theta: 0.000 °
Operations: Y Scale Mul 1.583 | Y Scale Mul 1.458 | Import
- 86-2339 (C) - Calcite - $\text{Ca}(\text{CO}_3)$
- 87-0674 (C) - Portlandite, syn - $\text{Ca}(\text{OH})_2$
- 33-0302 (*) - Larnite, syn - Ca_2SiO_4
- 72-0646 (C) - Ettringite -

Sulfatos



- #S - File: 2275.raw - Type: 2Th/Th unlocked - Start: 3.976 ° - End: 69.976 ° - Step: 0.050 ° - Step ti 1451 (*) - Ettringite, syn - $\text{Ca}_6\text{Al}_2(\text{SO}_4)_3(\text{OH})_{12}\cdot 26\text{H}_2\text{O}$
Operations: Import
- 10S - File: 10s.raw - Type: 2Th/Th unlocked - Start: 3.976 ° - End: 69.976 ° - Step: 0.050 ° - Step ti
Operations: Y Scale Mul 1.917 | Import
- 86-2339 (C) - Calcite - $\text{Ca}(\text{CO}_3)$
- 87-0674 (C) - Portlandite, syn - $\text{Ca}(\text{OH})_2$
- 76-1746 (C) - Gypsum - $\text{CaSO}_4(\text{H}_2\text{O})_2$
- 33-0302 (*) - Larnite, syn - Ca_2SiO_4

Sin tratamiento



- 10R - File: 10r.raw - Type: 2Th/Th unlocked - Start: 3.976 ° - End: 69.976 ° - Step: 0.050 ° - Step time: 3. s - Temp.: 25 °C (Room) - Time Started: 0 s - 2-Theta: 3.976 ° - Theta: 0.000 ° - Chi: 0. Operations: Y Scale Mul 2.000 | Import
- #R - File: 2273.raw - Type: 2Th/Th unlocked - Start: 3.976 ° - End: 69.976 ° - Step: 0.050 ° - Step time: 3. s - Temp.: 25 °C (Room) - Time Started: 0 s - 2-Theta: 3.976 ° - Theta: 0.000 ° - Chi: 0. Operations: Import
- 86-2339 (C) - Calcite - $\text{Ca}(\text{CO}_3)$
- 87-0674 (C) - Portlandite, syn - $\text{Ca}(\text{OH})_2$
- 41-1451 (*) - Ettringite, syn - $\text{Ca}_6\text{Al}_2(\text{SO}_4)_3(\text{OH})_{12}\cdot 26\text{H}_2\text{O}$
- 33-0302 (*) - Larnite, syn - Ca_2SiO_4