

Floor plan 5  
1:175

**1 CORE AREA MUSIC SCHOOL**

- 1.1 Direction/Management  
1. Director 20m2  
2. Vicedirector 15m2  
3. Intern organisation/controlling 38m2  
4. Erasmus Exchange secretary 15m2  
5. Dossier room 10m2  
6. Meeting room big (30people) 60m2  
7. Meeting room small (10people) 20m2
- 1.2 Operation and Technic  
1. Server 15m2
- 1.3 Center Area  
1. Front office 20m2  
2. Administration 50m2  
3. Bar guests (100 people) 180m2  
4. Canteen guests (100 people) 120m2  
5. Canteen aux. rooms (kitchen/delivery) 50m2

**2 CENTRAL TEACHING ROOMS**

- 2.1 Concert and Rehearsal rooms  
1. Concert chambre (350 people) 400m2  
2. Blackbox 350m2  
3. Concert chambre gallery  
4. Blackbox gallery  
5. Club 230m2  
6. Backstage club 105m2  
7. Wardrobes/backstage concert chambre  
8. Wardrobes/backstage blackbox  
9. Foyer/wardrobe concert visitors  
10. Meeting exterior Lobby

**2.2 General teaching space**

1. Individual classroom S aprox 20m2 (x7)  
2. Individual classroom L aprox 30m2 (x8)  
3. Group classroom S 40-50m2 (x5)  
4. Group classroom M 65m2  
5. Individual classroom L 30-40m2  
6. Group classroom S Jazz 50m2  
7. Group classroom M Jazz (big band) 98m2  
8. Group classroom L classic 140m2  
9. Group classroom L classic auxiliary 80m2 (x2)  
10. Group classroom/Rehearsal room classic 240m2  
11. Group classroom/Rehearsal room modern 200m2

**2.3 Auxiliary rooms**

1. Auditorium 120m2  
2. Multipurpose room 104m2  
3. Theory room music&computer 80m2  
4. Server room 10m2

**2.4 Body work music space**

1. Ballet rythm open room 120m2  
2. Lockers/wardrobes 15m2  
3. Body theory teaching space 75m2  
4. Rythm theory teaching space 50m2  
5. Body/rythm instrument storage 15m2

**2.5 Special rehearsal rooms**

1. Organ lessons small 50m2  
2. Bass and hep room 40m2  
3. Classic drums big 115m2

**2.6 Special students/teachers spaces**

1. Students resting area  
2. Teachers resting area  
**3. Students lounge department 160m2**  
4. Lounge public rehearsal rooms

**2.7 Rehearsal public rooms**

1. Small chamber aprox 5m2  
2. Medium chamber aprox 8m2  
3. Big chamber aprox 15m2  
4. Classic drums chamber aprox 12m2

**3 INSTITUTE**

- 3.1 Jazz/folk/classic theory  
1. Jazz/folk/classic theory office 60m2  
2. Meeting room 25m2  
3. Copy room 14m2

**3.2 New music/composition theory**

1. New music/composition theory office 43m2  
2. Meeting room 15m2  
3. Copy room 8m2

**3.3 Pedagogy music**

1. Institute direction office 55m2  
2. Student coordination 18m2  
3. pedagogy music open flexible area 130m2  
4. Meeting/lecturing room (6people) 15m2  
5. Copy room 10m2

**4 RESEARCH AND DEVELOPMENT**

- 4.1 Administration  
1. R&D 81m2  
2. Management R&D 15m2  
3. Individual office 15m2  
4. Dossier room 10m2

**4.2 Labs**

1. Lab room for electronic music 20m2

**5 LIBRARY**

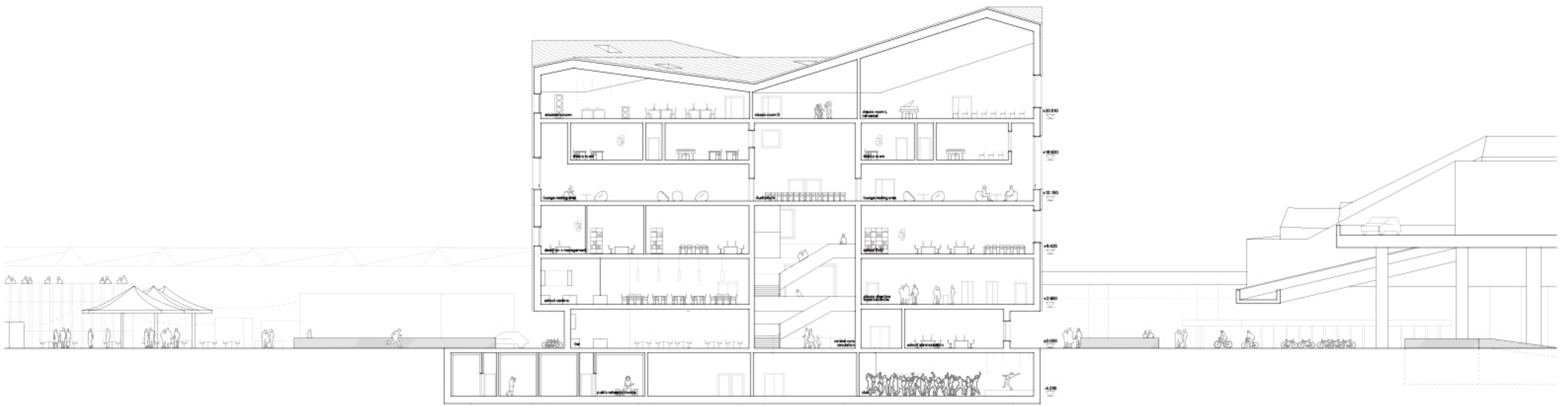
- 5.1 Library subject  
1. Library main archive 350m2  
2. Reading room/working spaces library 230m2  
3. Mediateche 50m2  
4. Chorus/Orchestra library  
5. Book checkout 48m2  
6. News lounge  
7. Copy room 20m2

**5.2 Administration**

1. Institute direction 18m2  
2. Administration 18m2 (x3)  
3. Book sorting room 30m2  
4. Book equipment 20m2

**6 STORAGE AND OTHER AUXILIARY SPACES**

- 6.1 Special storage  
1. Special storage (instruments) 200m2
- 6.2 Building services  
1. Material services  
2. Building services 200m2  
3. Services storage 200m2



Cross Section 1:250  
90 degrees central space



North façade 1:250  
Main entrance