

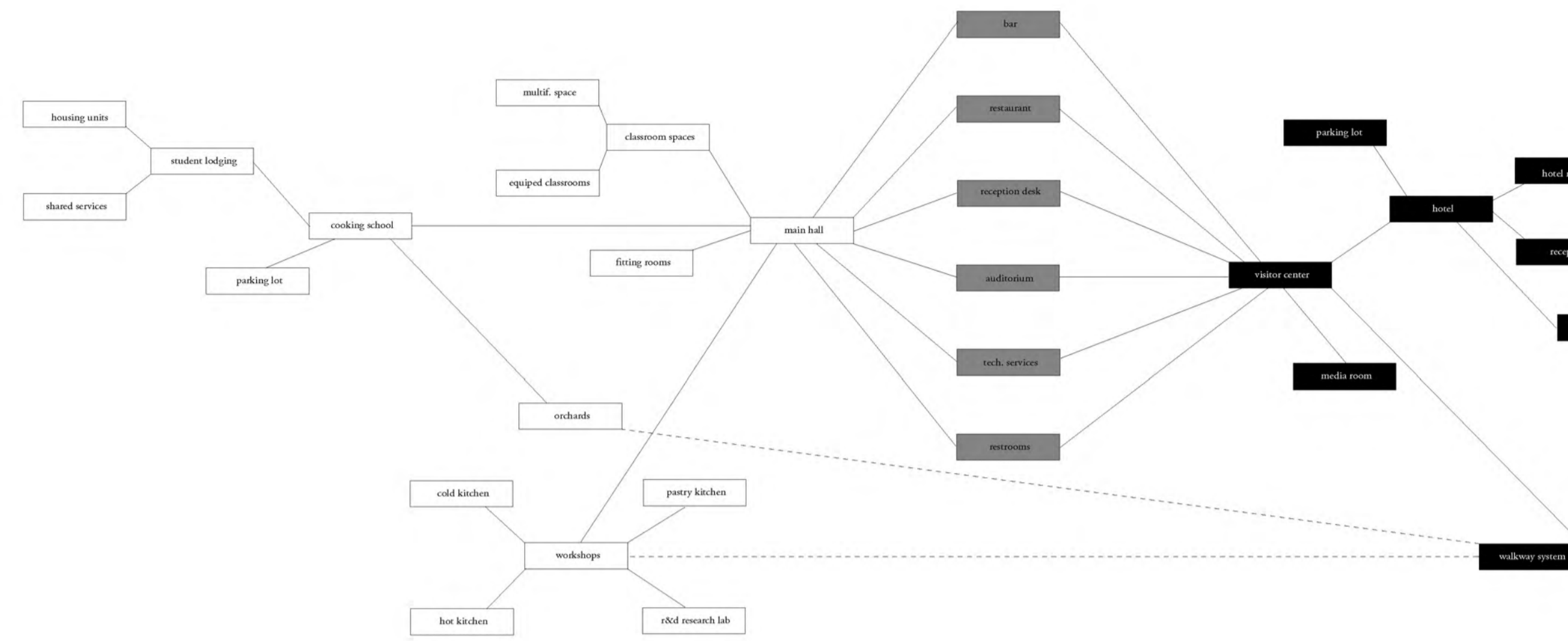
Synergetic retrofitting

The cooking school and visitor center are two complementary activities designed to activate a site micro economy in order to ensure the permanence of the intervention. On the one hand, visitors can eat at the restaurant while enjoying the spectacle of the kitchen in an industrial atmosphere. On the other hand, cooking school students benefit from the presence of a critical mass of visitors that provide a continuous flow of clients into the restaurant. These two activities mutually benefit from their presence, but do not interfere with its operation because each one is developed on a set of differentiated planes.

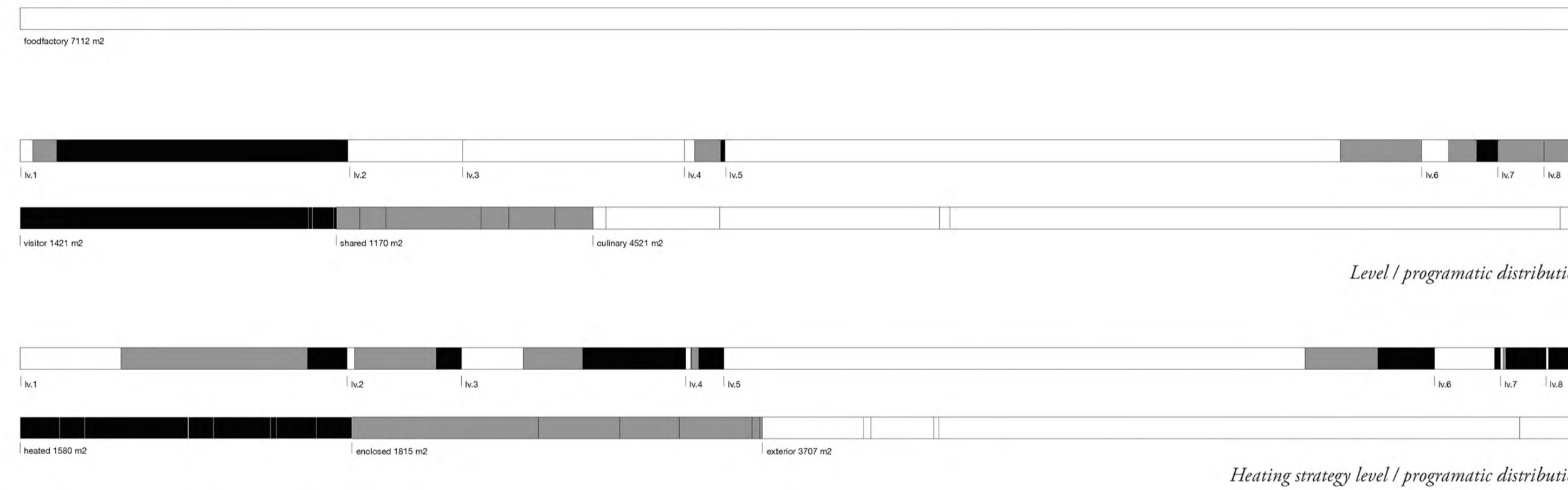
At the same time, these activities are anchored within a framework of territorial scale: The area boasts of a unique set of local products and a strong culinary tradition that lack a central facility to articulate the existing network. Rehabilitating the complex would also benefit from the multiple industries that stretch along the Llobregat River and are currently part of a industrial heritage touristic route.

Each program is linked with its own dedicated infrastructure. By means of equipped cubes, the necessary infrastructure is provided inside the existing spaces in order to develop the cooking school. New smooth lightweight construction coexists with the textured preexistence. It is located on the lower half of the factory, which is formed by spaces that are in good condition (covered with vaulted ceilings).

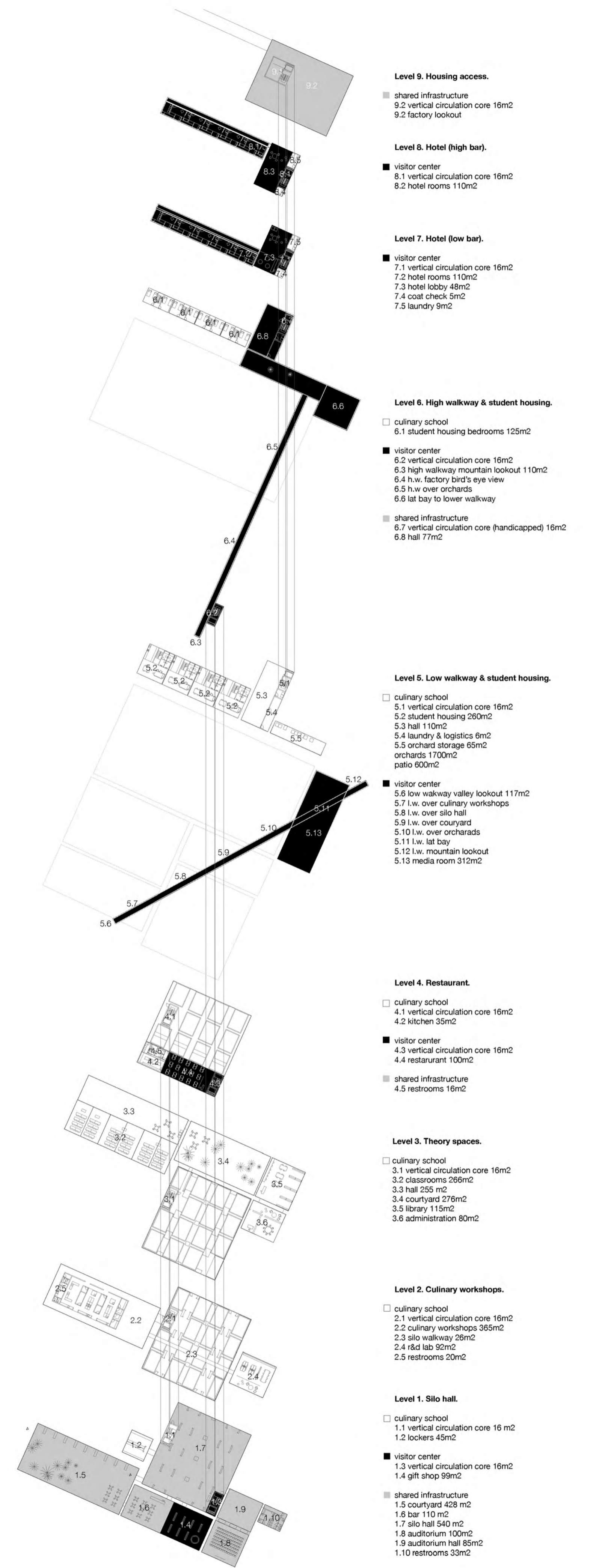
The visitor center consists of an elevated walkway that rises above the ground level of the factory and perforates the warehouses, bringing the visitor closer to the vaulted ceilings. A new narrative is provided that facilitates the understanding of the complex as a whole and alternates landscape and industry. With this new infrastructure the site becomes wheelchair accessible.



Shareable programs.



Heating strategy level 1 programmatic distribution.



Program retrofitting.



An elevated walkway leads the visitor through a sequence of activated natural and industrial spaces.