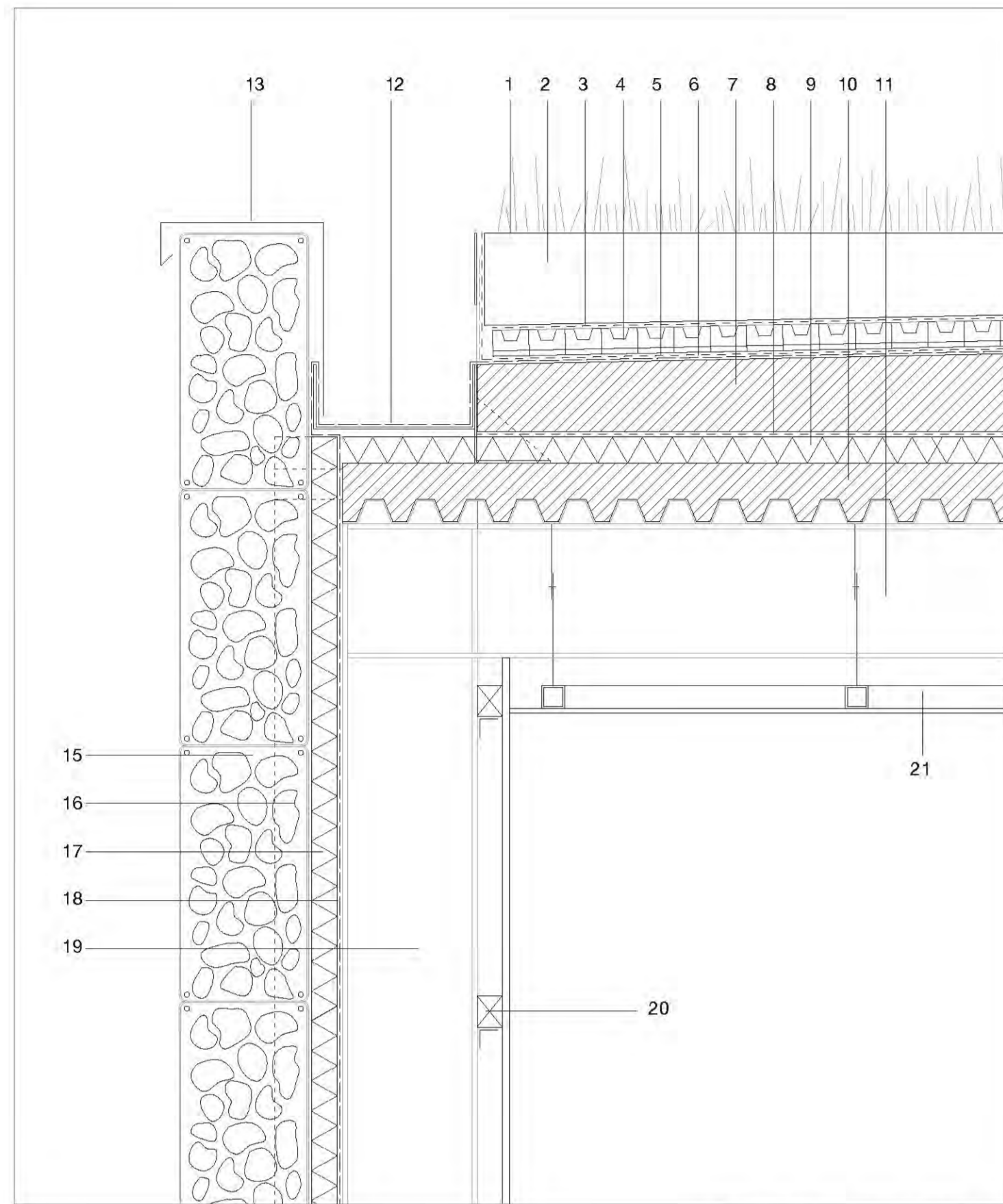
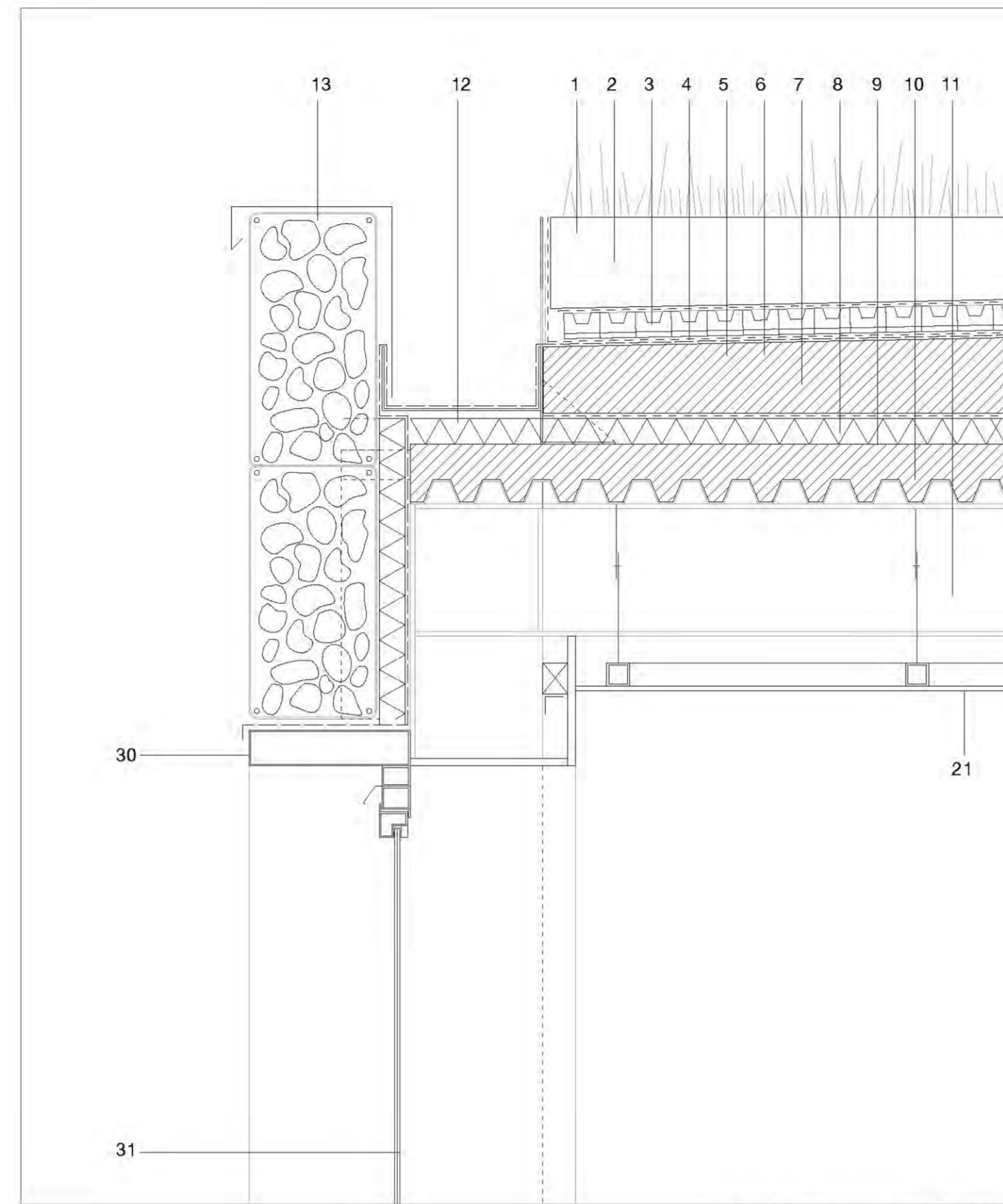


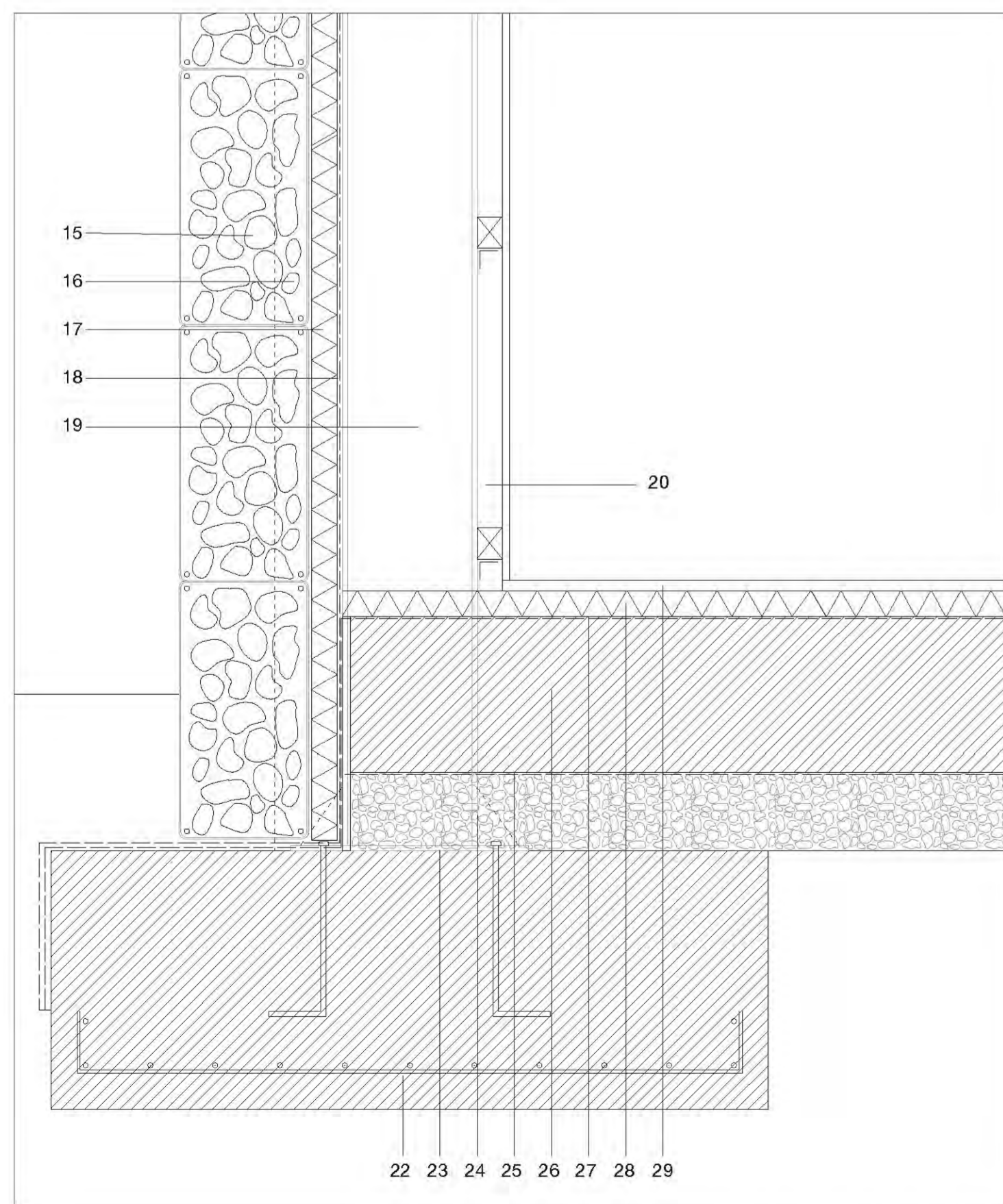
# Student housing



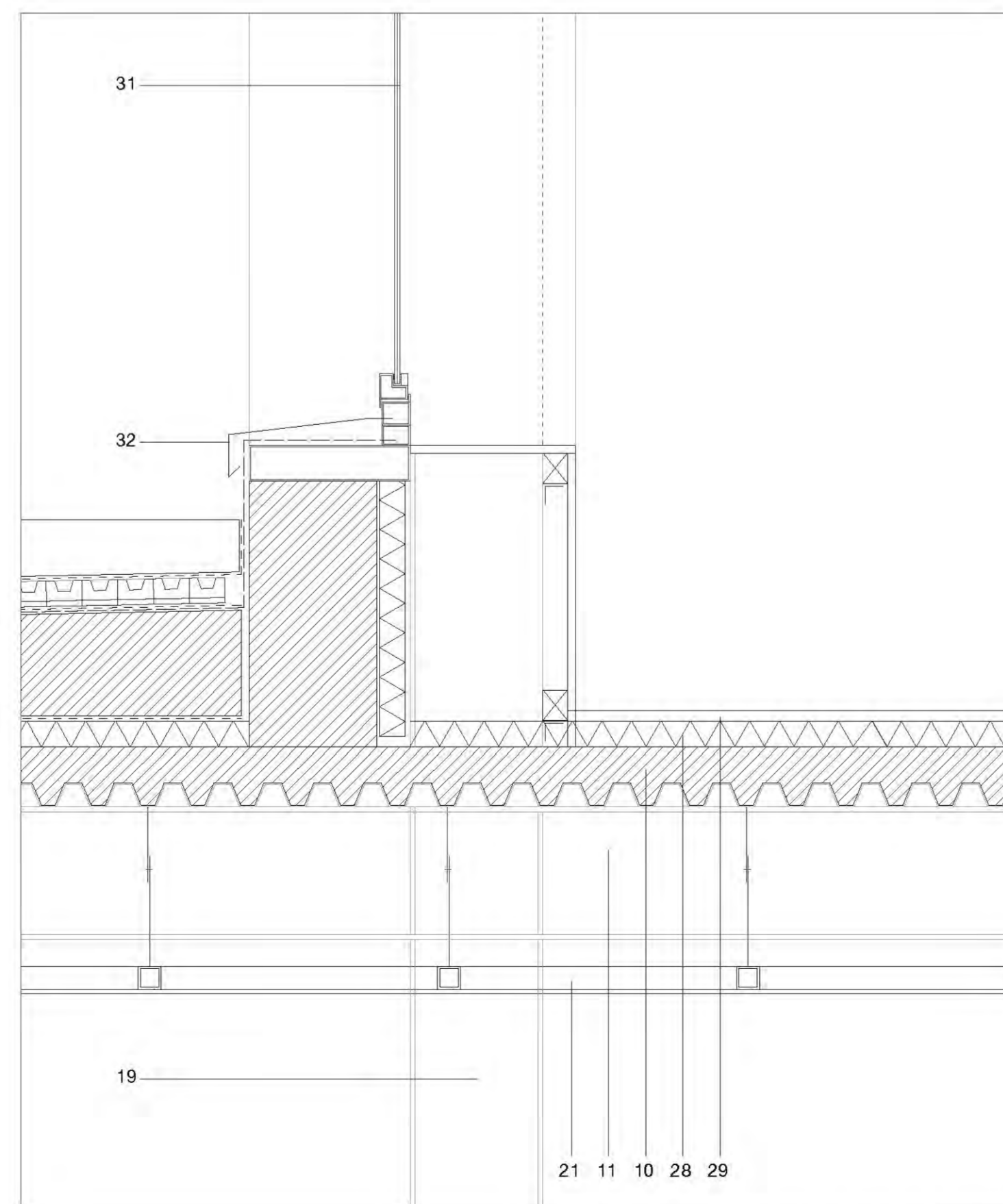
Student housing roof detail 01



Student housing roof detail 03



Student housing floor detail 02



Student housing floor detail 04.

## Roof construction

1. Sedum plant roll.
2. Vegetation support soil t=20cm.
3. Geotextile mat, fleece.
4. Drainage course mats t=4cm.
5. Roof sealing (root proof).
6. Waterproof membrane.
7. Mortar leveling bed support t=10cm.
8. Separating layer.
9. Rockwool insulation board t=7cm.
10. Composite floor slab.
- Reinforced concrete topping t=12cm.
11. IPE250 steel section beam.
12. Gutter, 300x140x7mm channel.
13. Steel parapet capping.
14. Steel L flashing t=2mm.

## Facade construction

15. Gabion wall.
- 100cmx50cm wire baskets filled with site stone.
16. HEB100 steel section for gabion vertical support.
17. Rockwool insulation board t=7cm.
18. Waterproof membrane.
19. HEB300 steel section.

## Interior millwork

20. Plywood board t=4cm, with supporting wood stud frame 4x6cm, screwed.
21. Hanging ceiling. Hanging aluminum frame 60x60cm, 4cm tube. Plywood boards t=4cm, screwed.

## Floor construction

22. Reinforced concrete footing foundation, 3x0.5m, with lean concrete bedding.
23. Steel anchoring square plate 0.45x0.45m.
24. Coarse gravel bedding t=15cm
25. Geotextile mat, fleece.
26. Lean concrete 30cm.
27. Waterproof membrane.
28. Rockwool insulation board t=7cm.
29. Plywood boards t=4cm, screwed.

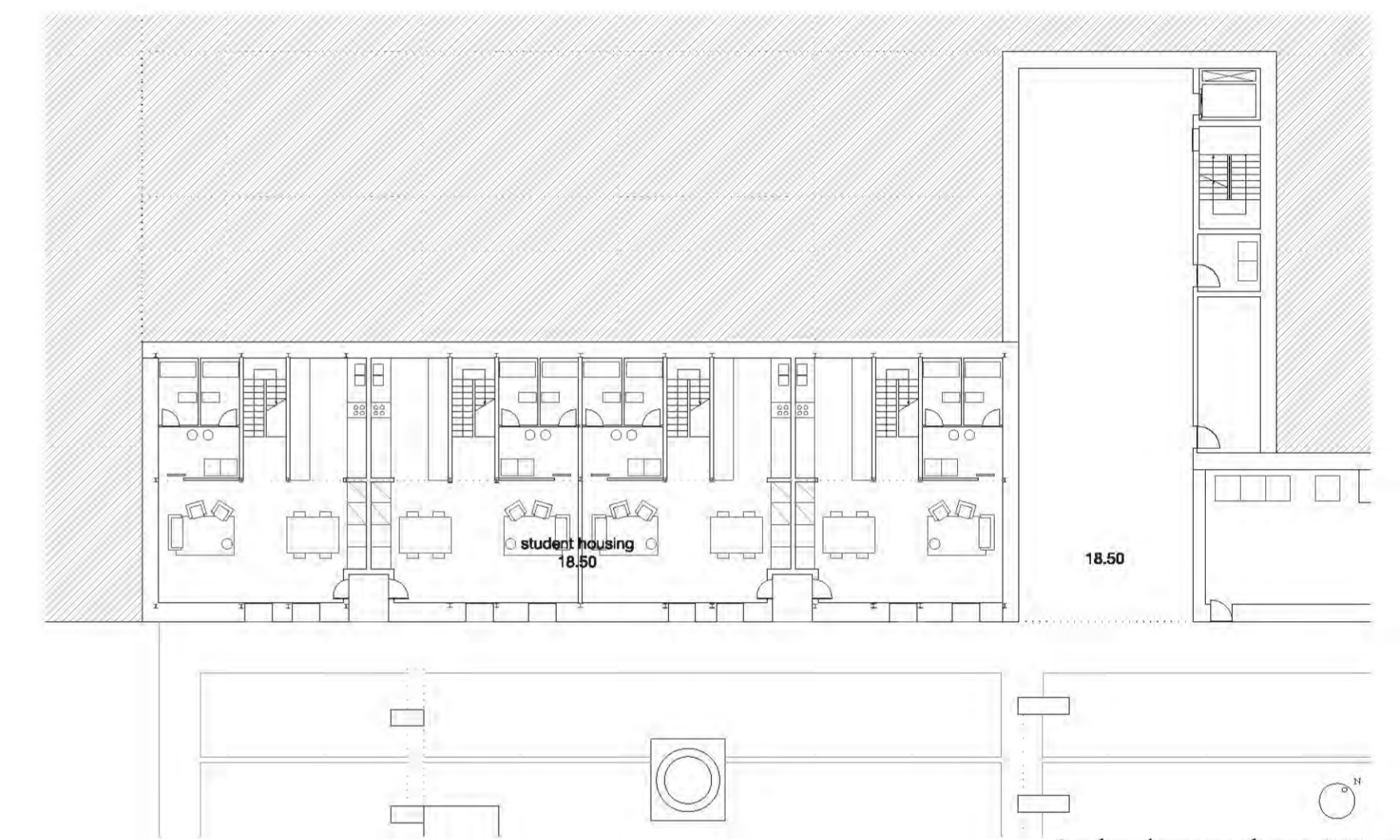
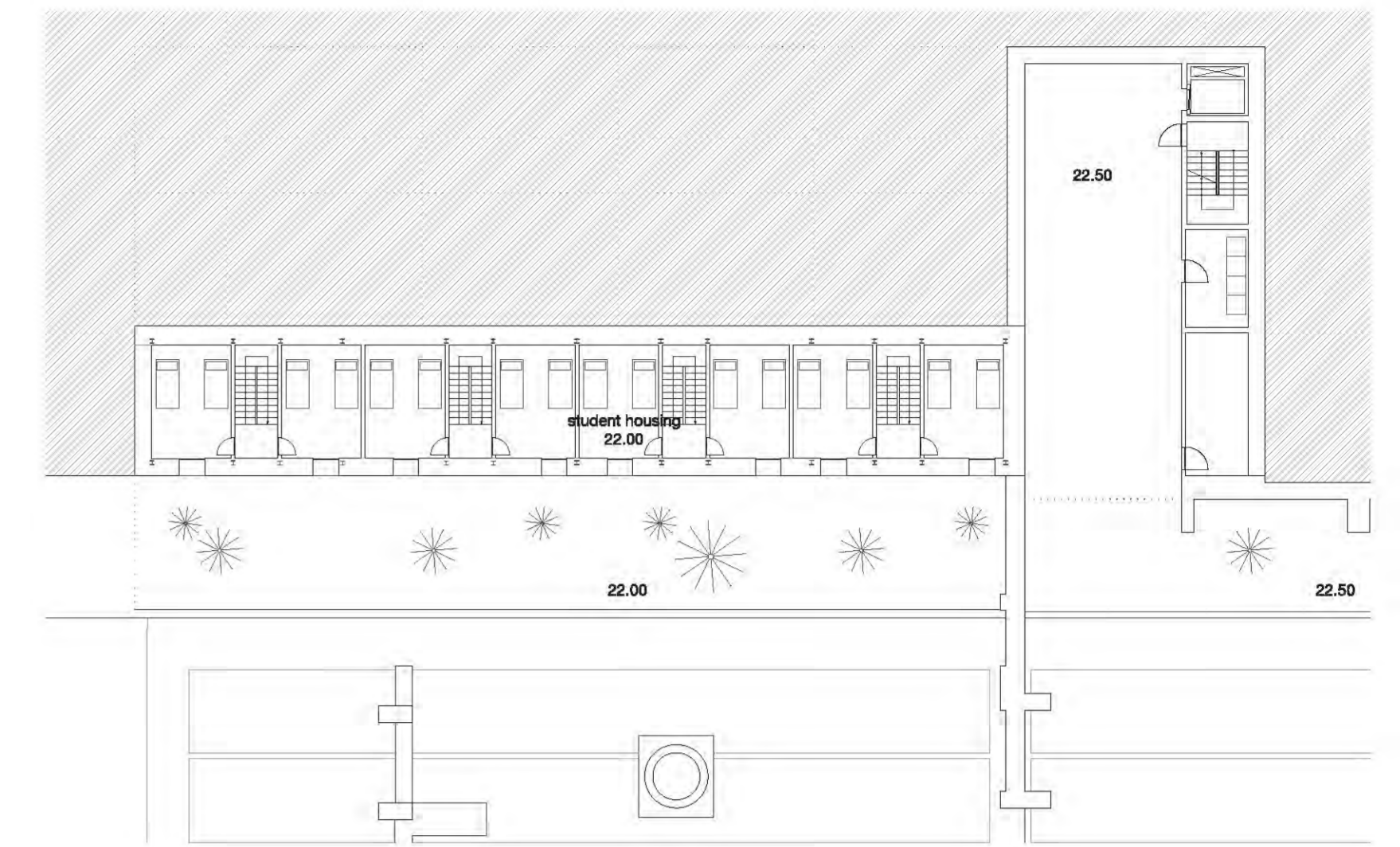
## Opening

30. Supporting framework of steel square hollow sections, 30x7cm, screwed to structure
31. Aluminum window with double glazing, 16mm toughened glass, 12mm cavity, 6mm toughened glass.
32. Window sill. Folded sheet metal.

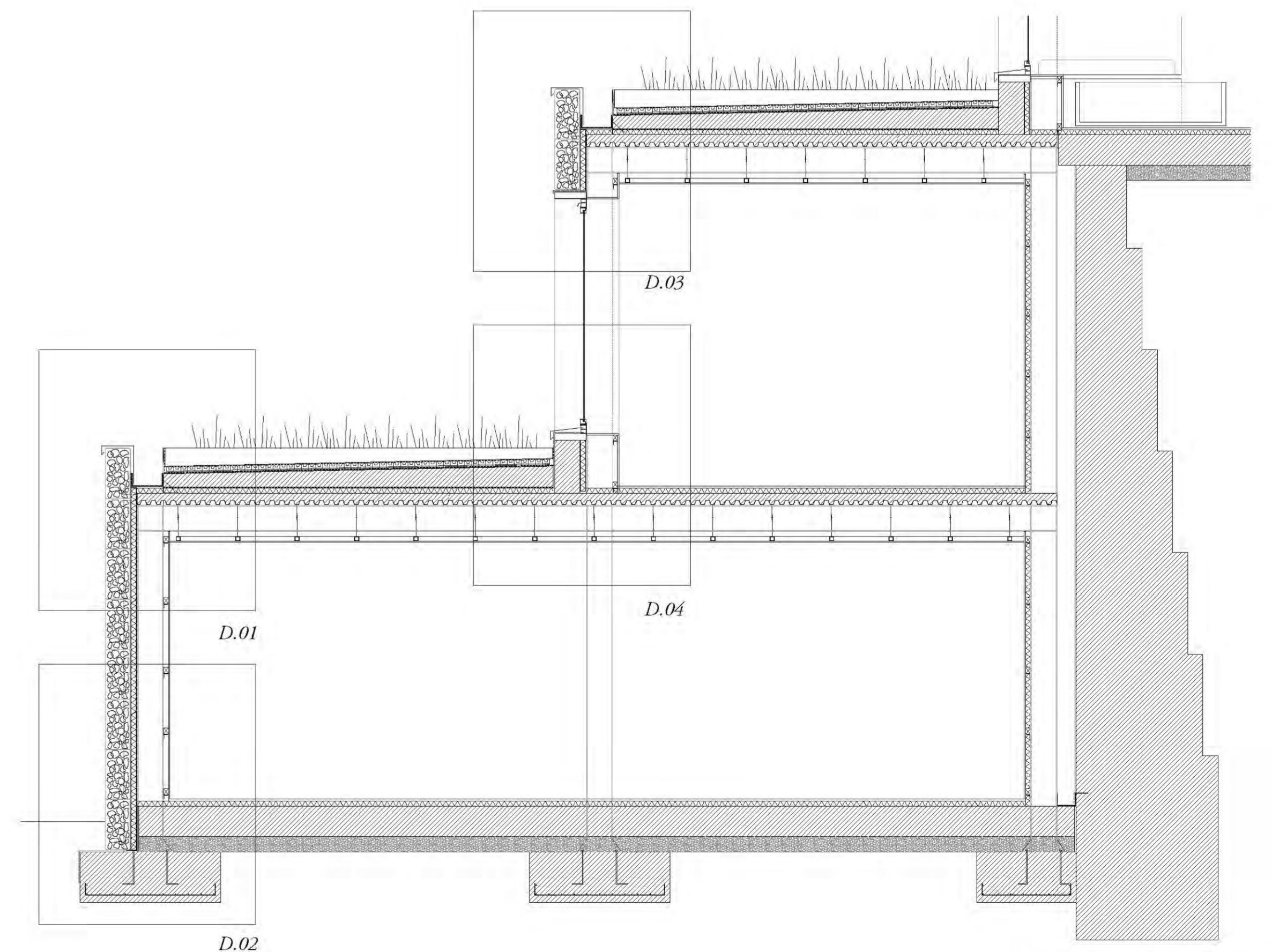
## Existing

33. Existing limestone gravity retaining wall.
34. Waterproof membrane.

Scale 1:10



Student housing plan. 1:200.



Student housing section. 1:40.