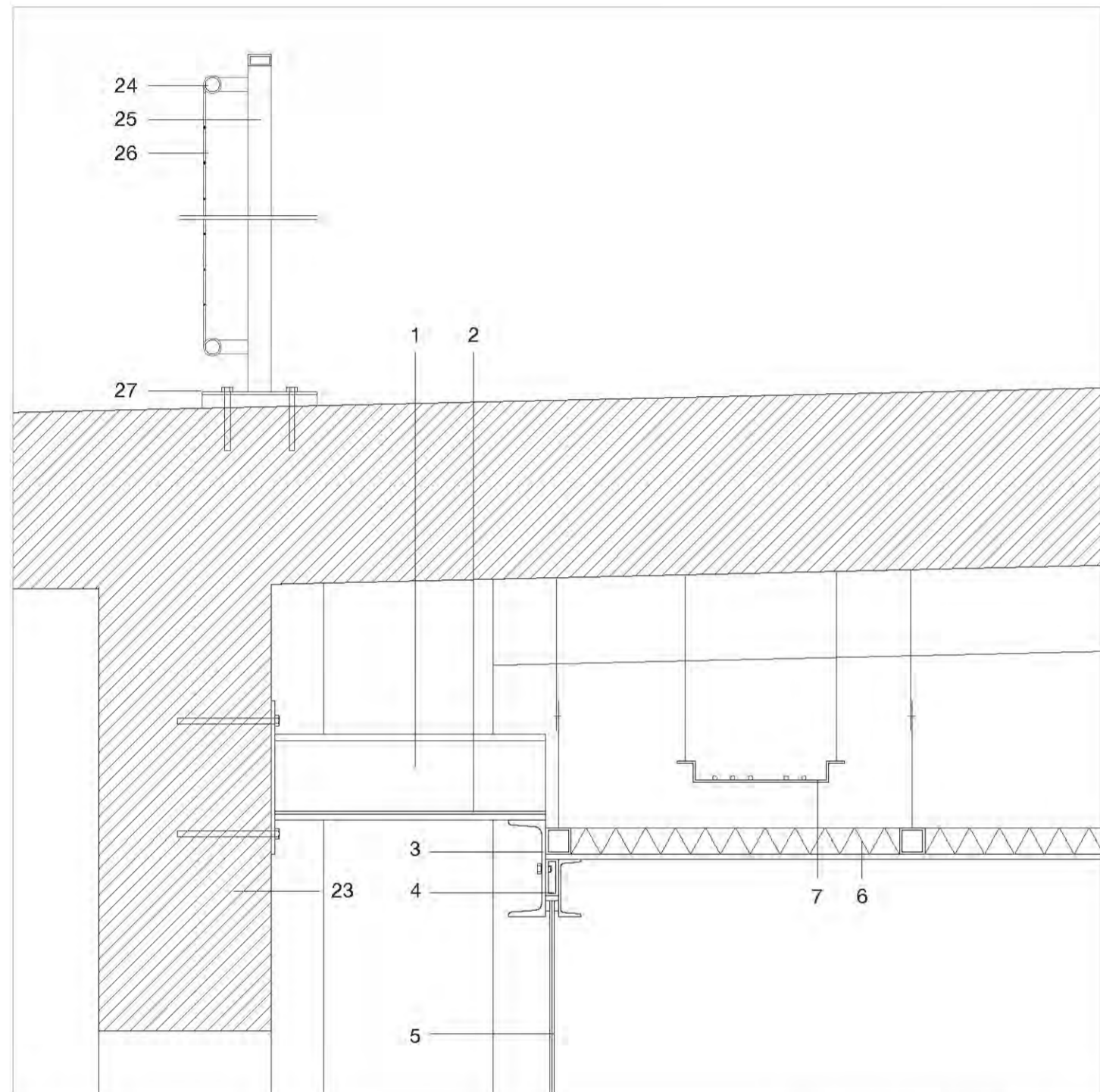


Silo hall

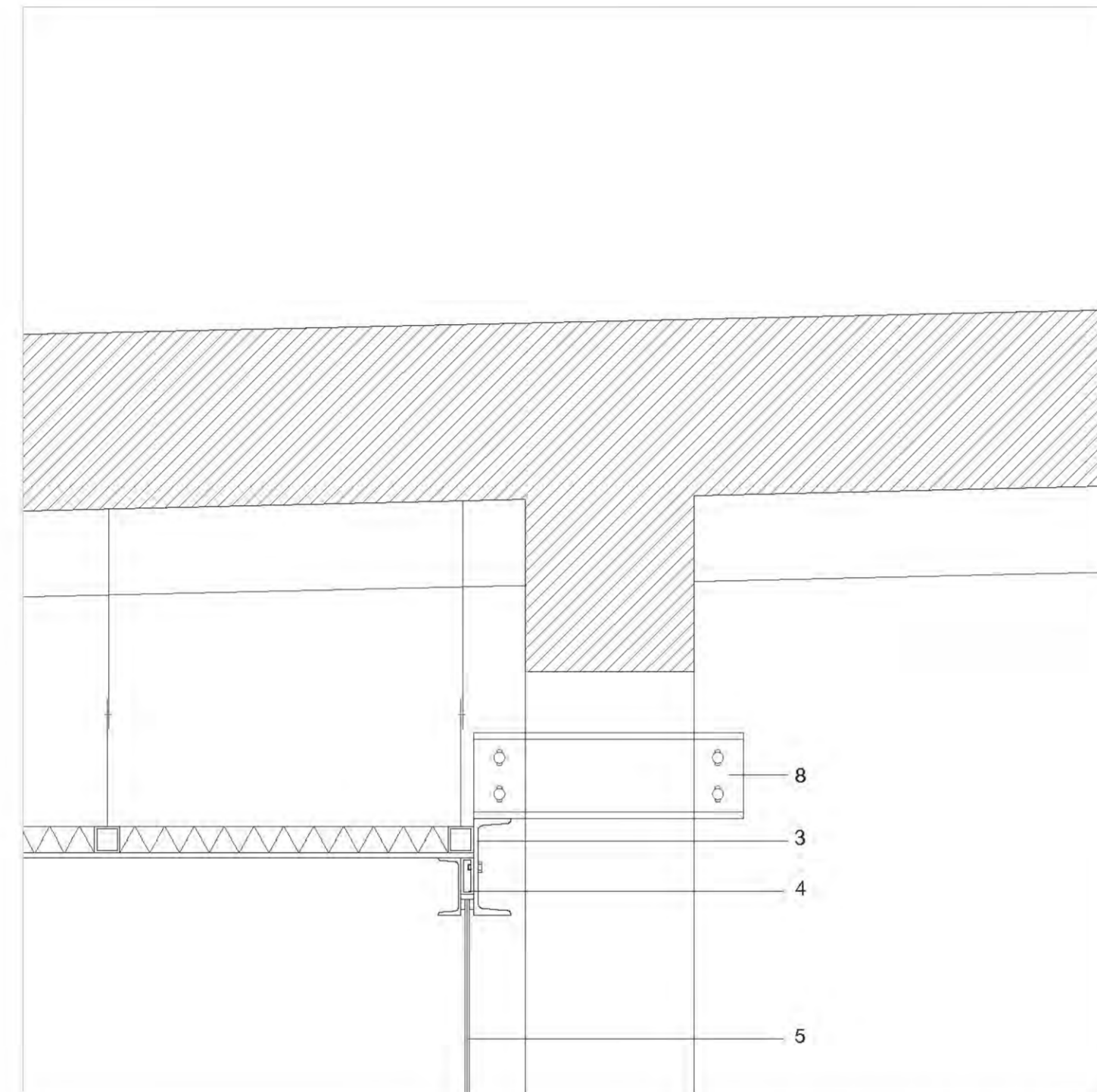


Restaurant box construction.

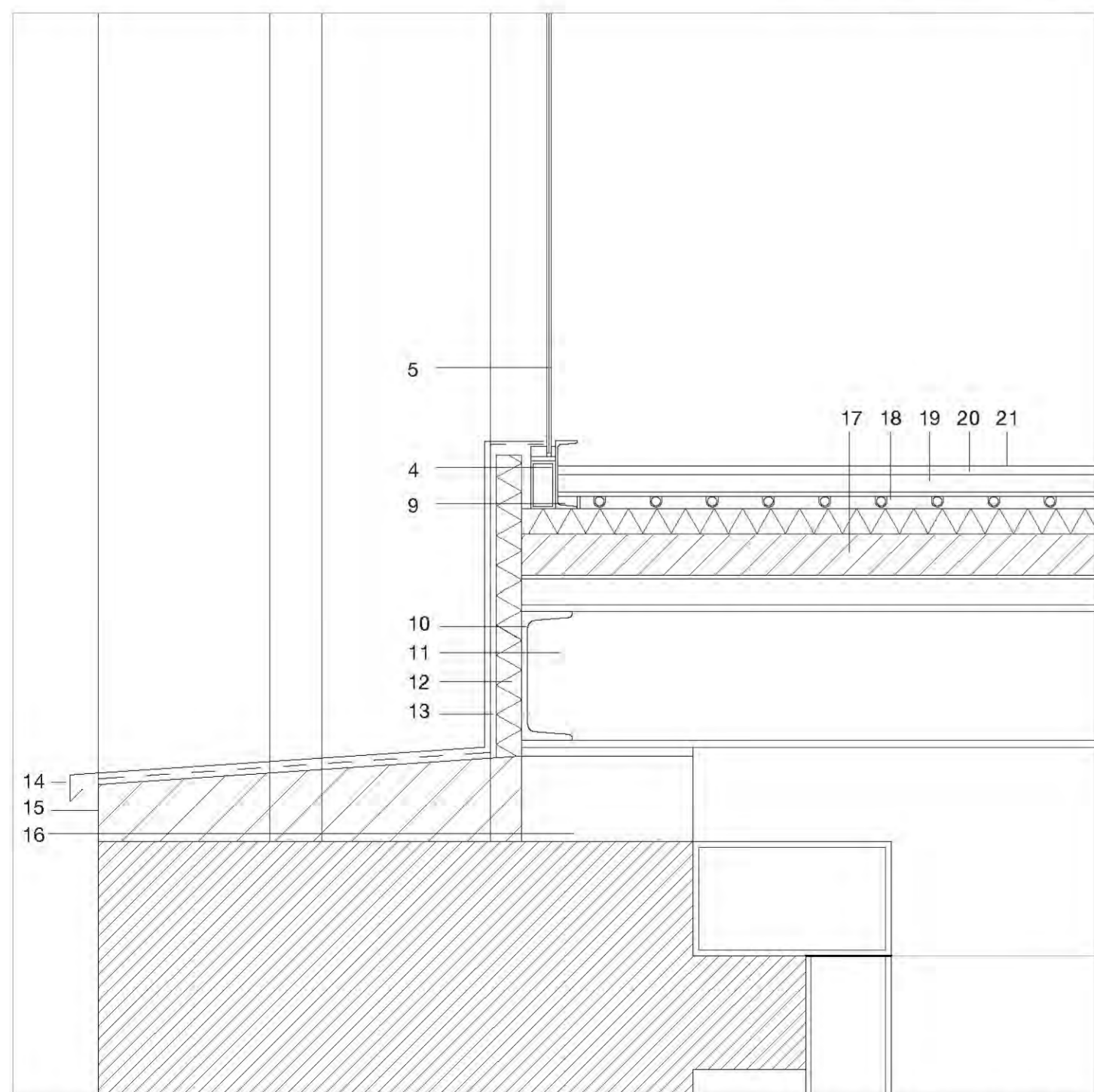
1. Steel I-beam anchored in existing reinforced concrete wall. 180 mm.
2. Steel sheet, untreated. t=2mm.
3. Steel channel, 300mm. Steel RHS section. Steel UPN section 180.
4. Satin-polished stainless-steel fixing piece for glazing.
5. Low iron double layer laminated glass.
6. Hanging ceiling.
7. Aluminum frame 60x60cm, 4cm tube.
8. Rockwool insulation board t=5cm.
9. Gypsum boards t=4cm, painted black.
10. Fluorescent tubes.
11. Technical services fitting. Wire baskets. 60 cm wide.
12. Steel C-beam bracing anchored in existing reinforced concrete column. 180 mm
13. Steel UPN section 180.
14. Steel UPN section 300.
15. Steel IPN section 300.
16. Rockwool insulation board t=5cm.
17. Waterproof membrane.
18. Stainless steel weather bar.
19. Concrete window sill. Min thickness 5cm. Sloped 2%.
20. Reinforced concrete support, 40x20cm. Stainless steel anchoring plate.
21. Composite floor slab.
22. Reinforced concrete topping t=12cm.
23. Holotib metal sheet t=50cm.
24. Integrated hot water heating system. Knauf gifa-floor klima or similar. 60x60cm panels.
25. Self-leveling calcium sulfate floor screed t=35mm.
26. Water based epoxy resin floor coating 4cm
27. High-build solvent free epoxy resin coating white gloss 1mm
28. Existing roof
29. Reinforced concrete slab t=30cm.
30. Reinforced concrete cross beams 60x30.
31. Waterproof layer.
32. Mortar leveling bed support t=10cm.
33. Existing facade
34. Reinforced concrete wall t=30cm.
35. Railing
36. Handrail screwed to handgrip post.
37. Steel cable net.
38. Flat rolled steel posts, galvanized. 5x2x90cm.
39. Square steel anchoring plate, square. 15x15cm.



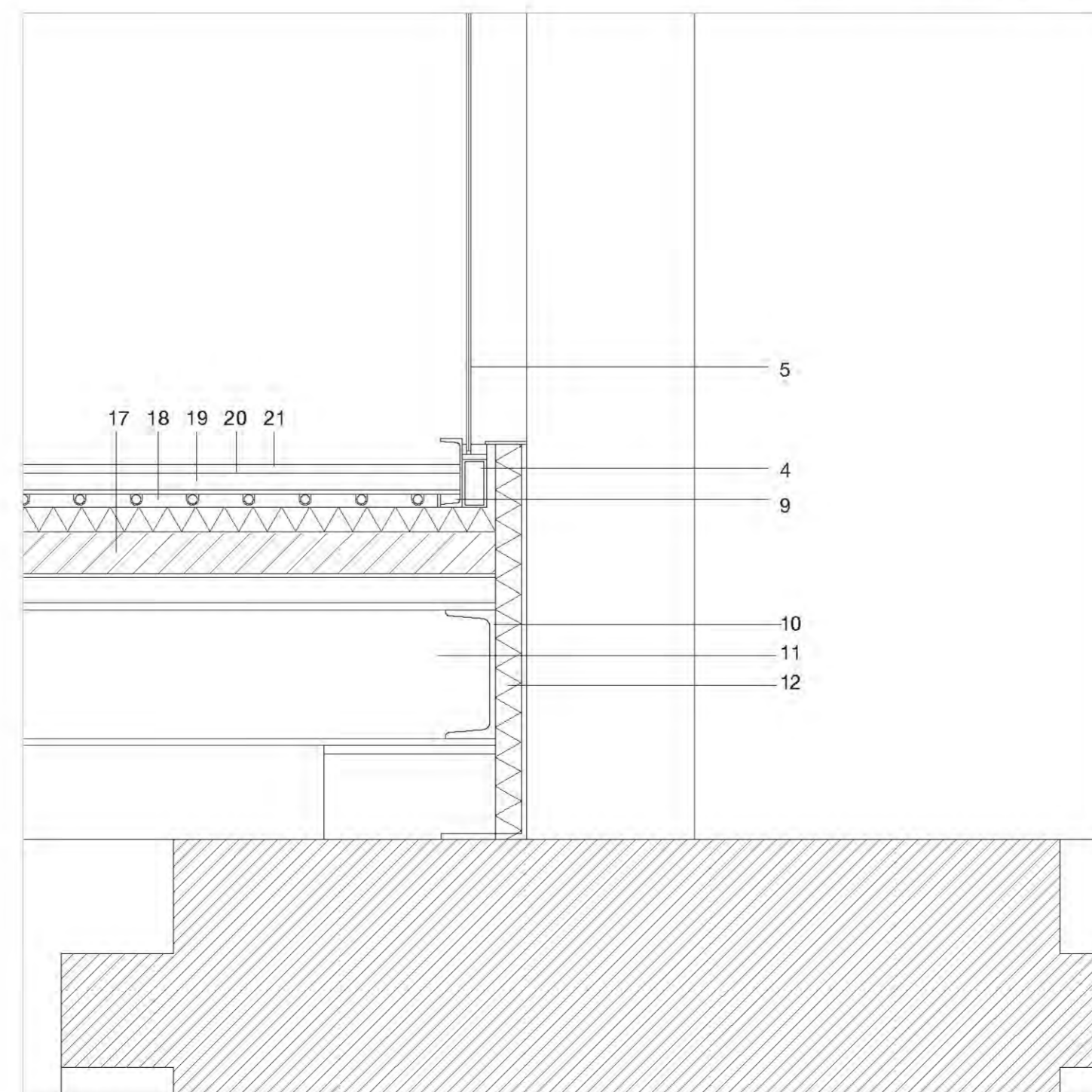
Restaurant roof detail 01. 1.10



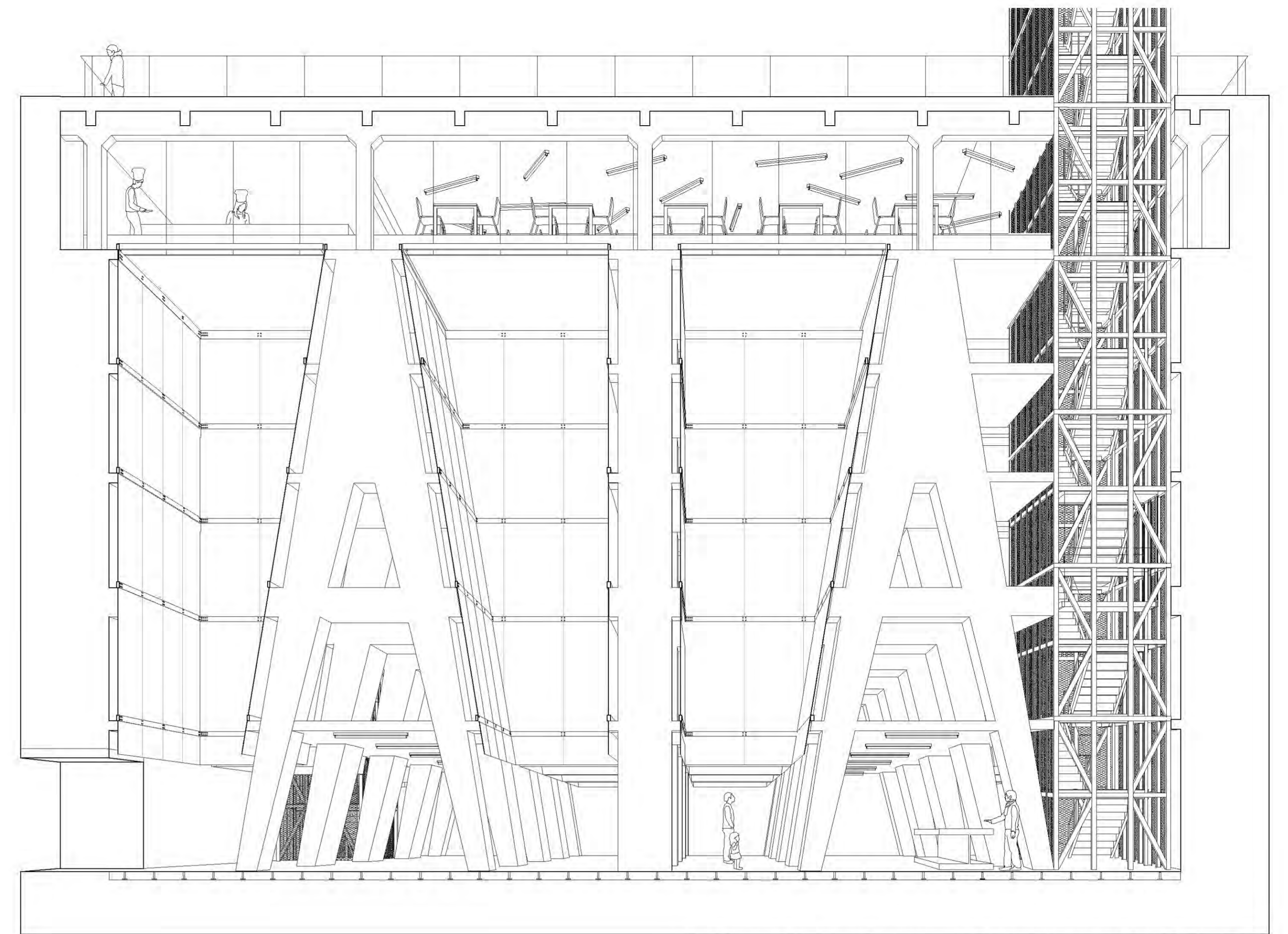
Restaurant roof detail 03. 1.10



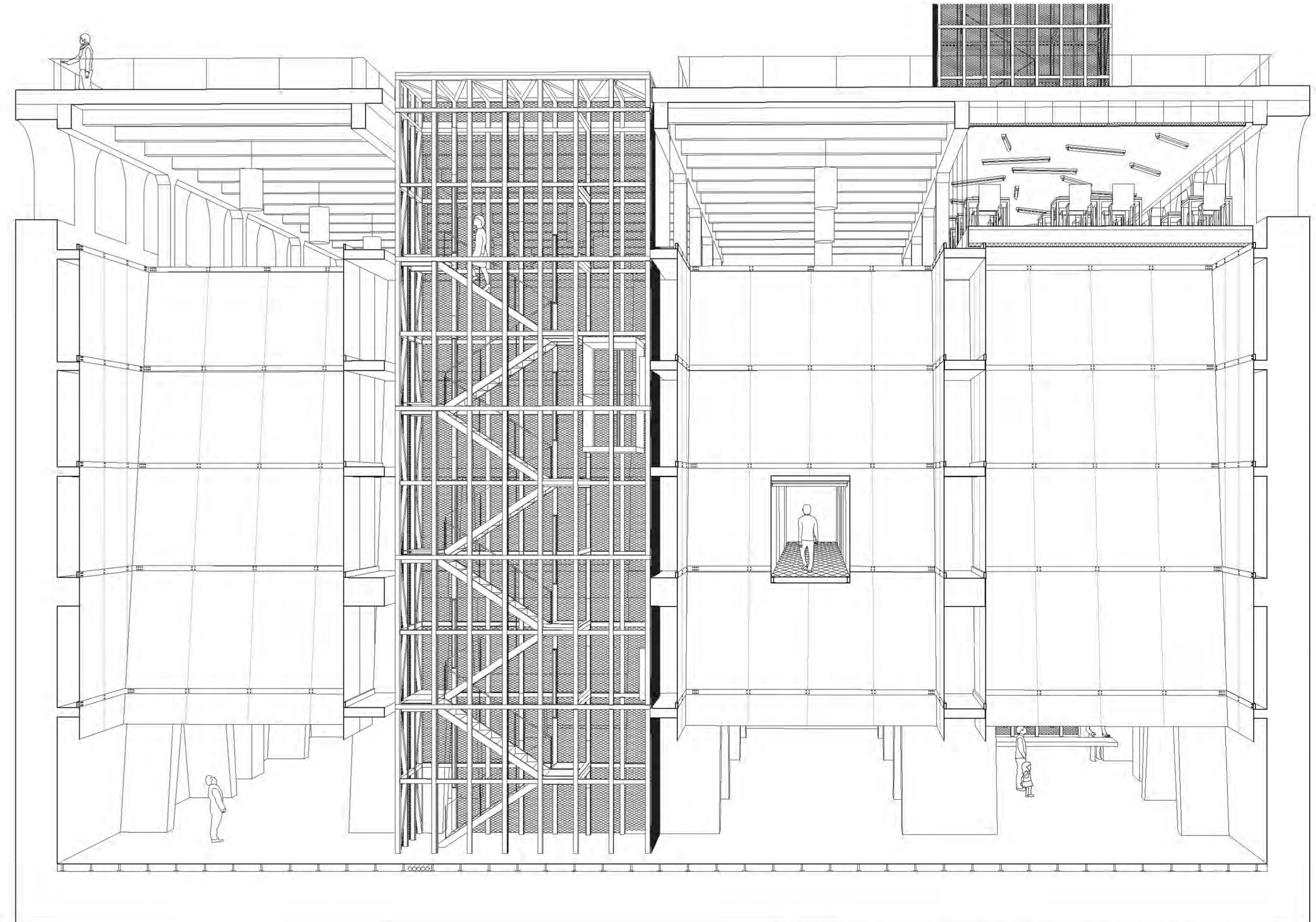
Restaurant floor detail 02. 1.10



Restaurant roof detail 04. 1.10



The old cement silo warehouse is reinterpreted as the circulation core and shared distribution hall.



Mechanized vertical infrastructure enables fast access to previously isolated factory levels.