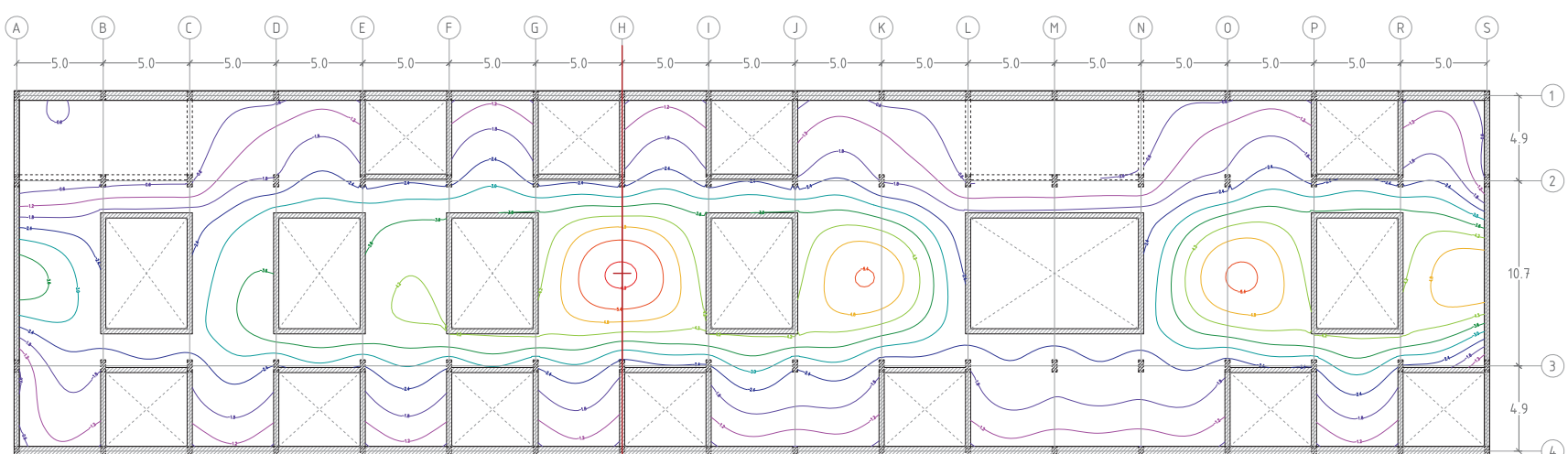


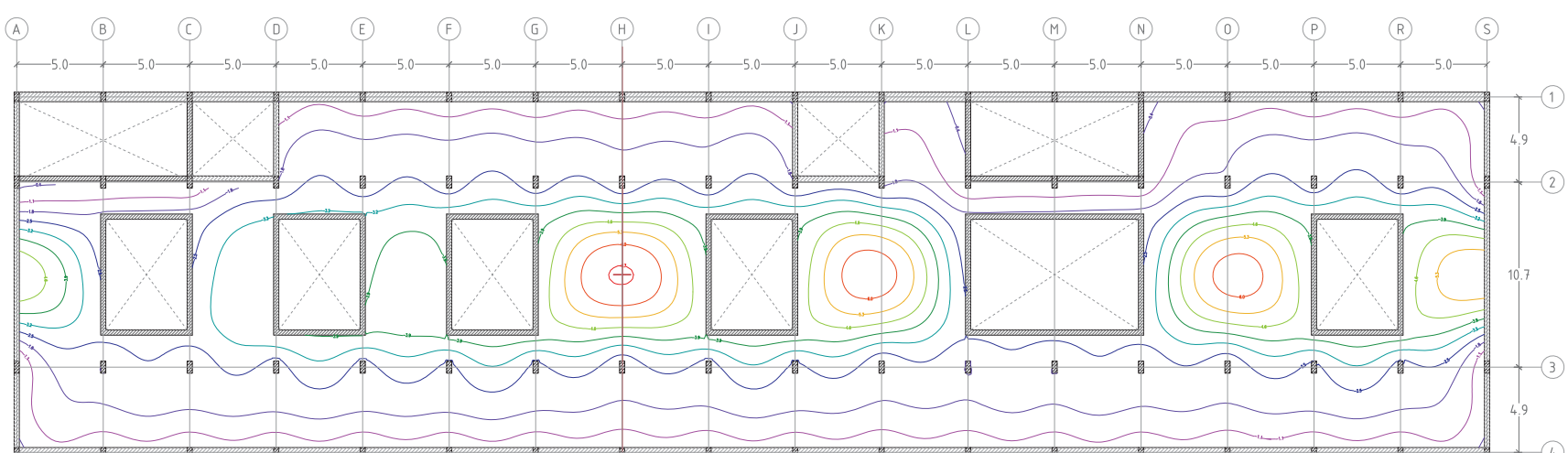
PLANTES D'ESTRUCTURA.  
 GEOMETRIA I DEFORMADA



SOSTRE PLANTA 2 (COBERTA)  
 E. 1/200  
 \_desplaçament Z (mm), PP+CM+Qa

FLETXA MÀXIMA  
 0.601 cm  
 1/1794 de la llum (<límit CTE: 1/500)

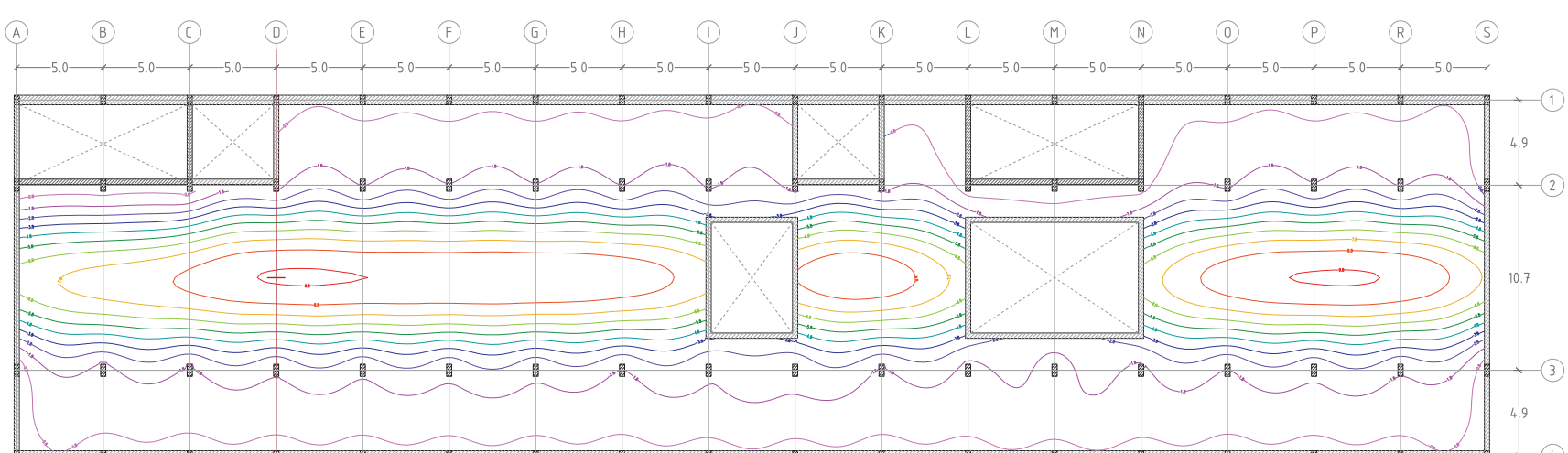
- 6.0 mm
- 5.4 mm
- 4.8 mm
- 4.2 mm
- 3.6 mm
- 3.0 mm
- 2.4 mm
- 1.8 mm
- 1.2 mm



SOSTRE PLANTA 1  
 E. 1/200  
 \_desplaçament Z (mm), PP+CM+Qa

FLETXA MÀXIMA  
 0.691 cm  
 1/1448 de la llum (<límit CTE: 1/500)

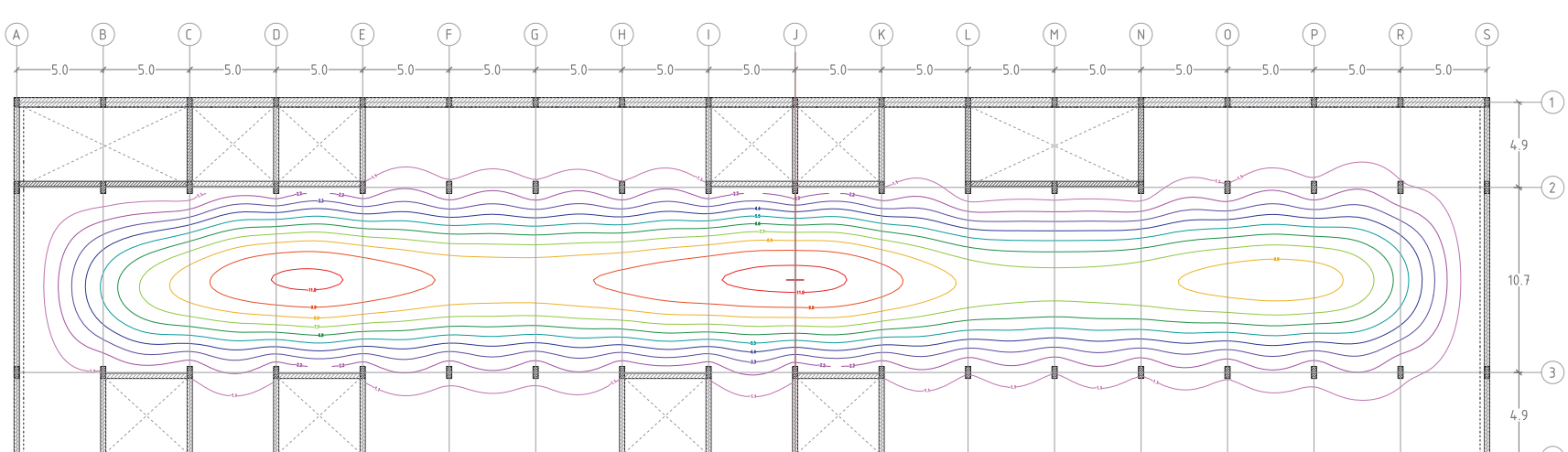
- 6.7 mm
- 6.0 mm
- 5.3 mm
- 4.6 mm
- 3.9 mm
- 3.2 mm
- 2.5 mm
- 1.8 mm
- 1.1 mm



SOSTRE PLANTA BAIXA  
 E. 1/200  
 \_desplaçament Z (mm),  
 PP+CM+Qa

FLETXA MÀXIMA  
 1.162 cm  
 1/842 de la llum (<límit CTE: 1/500)

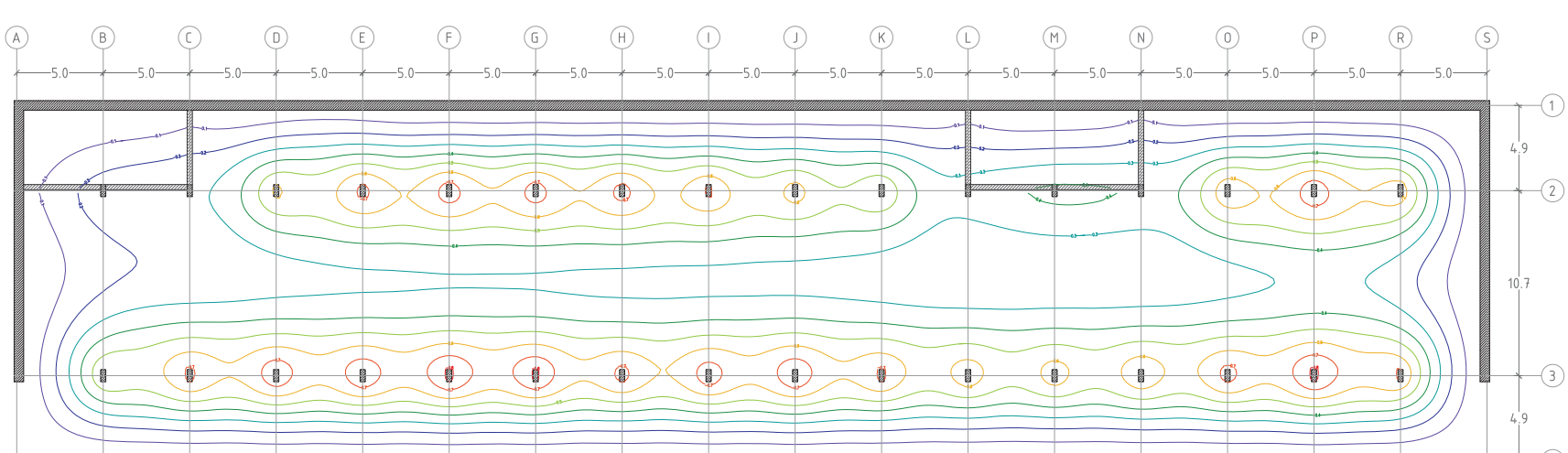
- 9.8 mm
- 8.8 mm
- 7.8 mm
- 6.8 mm
- 5.8 mm
- 4.8 mm
- 3.8 mm
- 2.8 mm
- 1.8 mm
- 0.8 mm



SOSTRE PLANTA SOTERRANI  
 E. 1/200  
 \_desplaçament Z (mm), PP+CM+Qa

FLETXA MÀXIMA  
 1.472 cm  
 1/680 de la llum (<límit CTE: 1/500)

- 11.0 mm
- 9.9 mm
- 8.8 mm
- 7.7 mm
- 6.6 mm
- 5.5 mm
- 4.4 mm
- 3.3 mm
- 2.2 mm
- 1.1 mm



LLOSA FONAMENTACIÓ  
 E. 1/200  
 \_desplaçament Z (mm), PP+CM+Qa

- 0.8 mm
- 0.7 mm
- 0.6 mm
- 0.5 mm
- 0.4 mm
- 0.3 mm
- 0.2 mm
- 0.1 mm