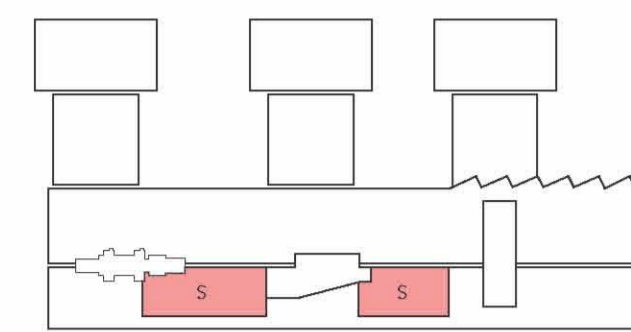
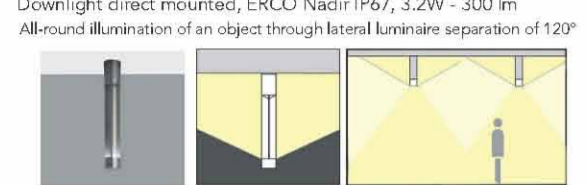


LIGHTING

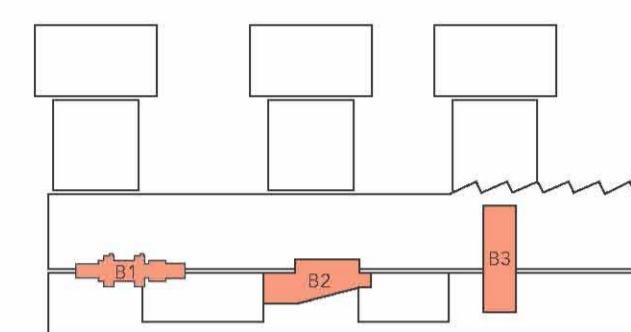
Public routes



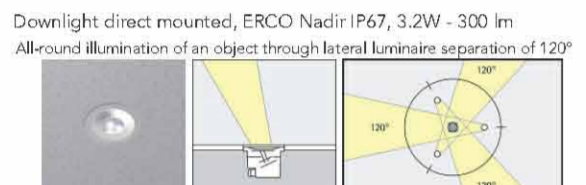
Downlight direct mounted, ERCO Nadir IP67, 3.2W - 300 lm



Specials



Downlight direct mounted, ERCO Nadir IP67, 3.2W - 300 lm



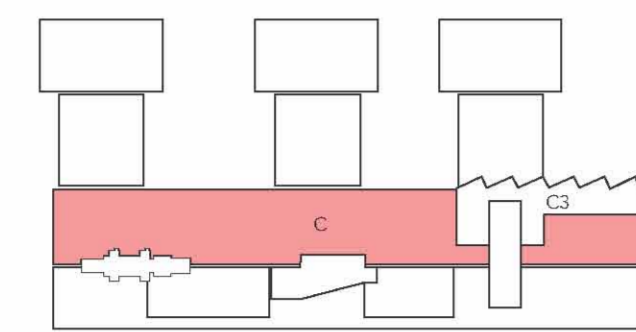
Lineal direct mounted, ERCO T16 TC-DEL, lamp 18W - 1200 lm



Lineal direct mounted, ERCO T16 TC-DEL, lamp 18W - 1200 lm



Turbine gallery



Downlight direct suspended, ERCO Pansan, lamp 50W - 1250 lm



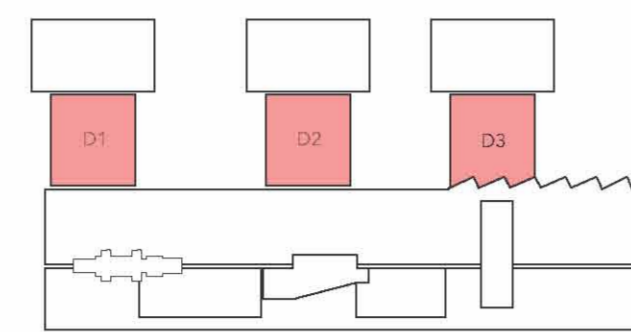
Lineal direct suspended, ERCO T16, fluorescent lamp 54W - 4450 lm



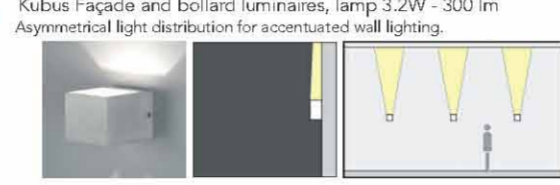
Lineal direct mounted, ERCO T16 TC-DEL, lamp 18W - 1200 lm



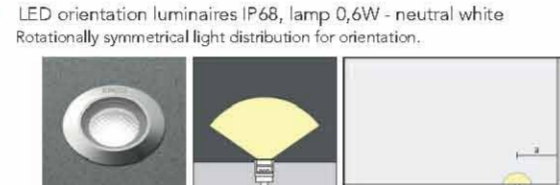
Top towers



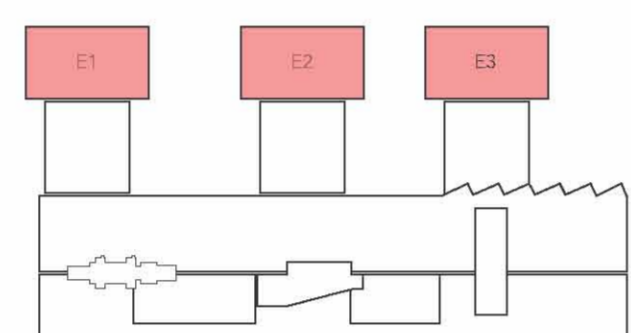
Kubus Facada and bollard luminaires, lamp 3.2W - 300 lm



LED orientation luminaires IP68, lamp 0,6W - neutral white



Towers



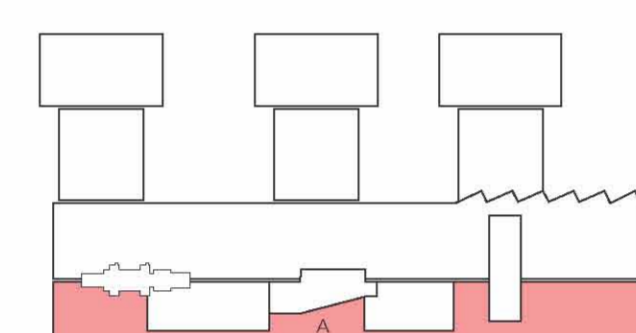
Logotec focal direct mounted, lamp 0,6W - neutral white



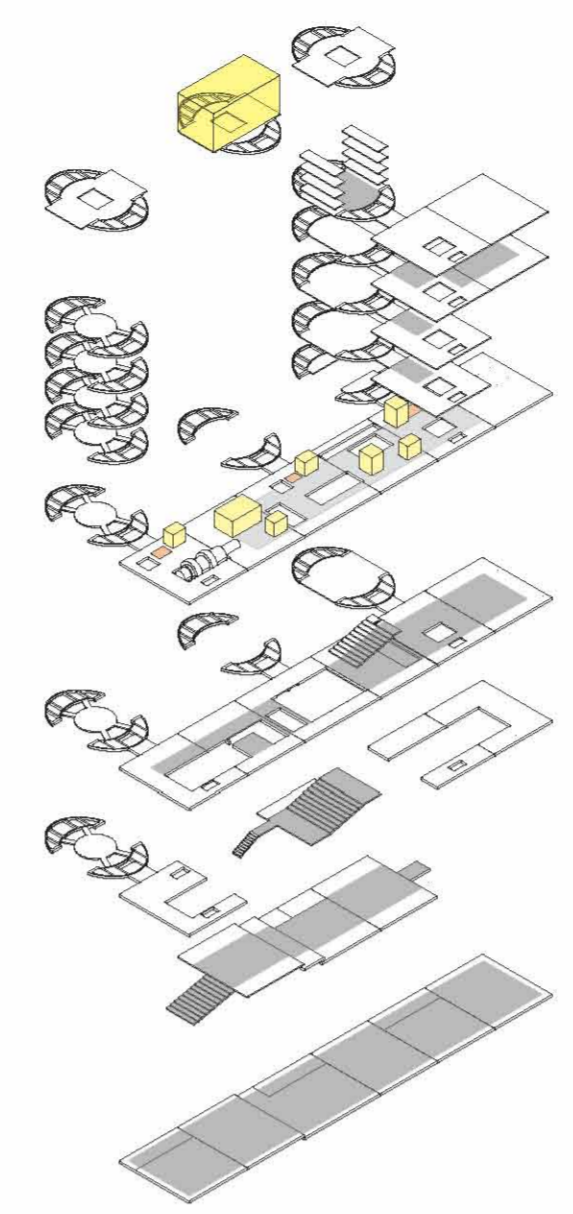
Lightcast Recessed luminaires, LED 13W - 1080 lm



Turbine holes



Downlight direct mounted, ERCO Nadir IP67, 3.2W - 300 lm

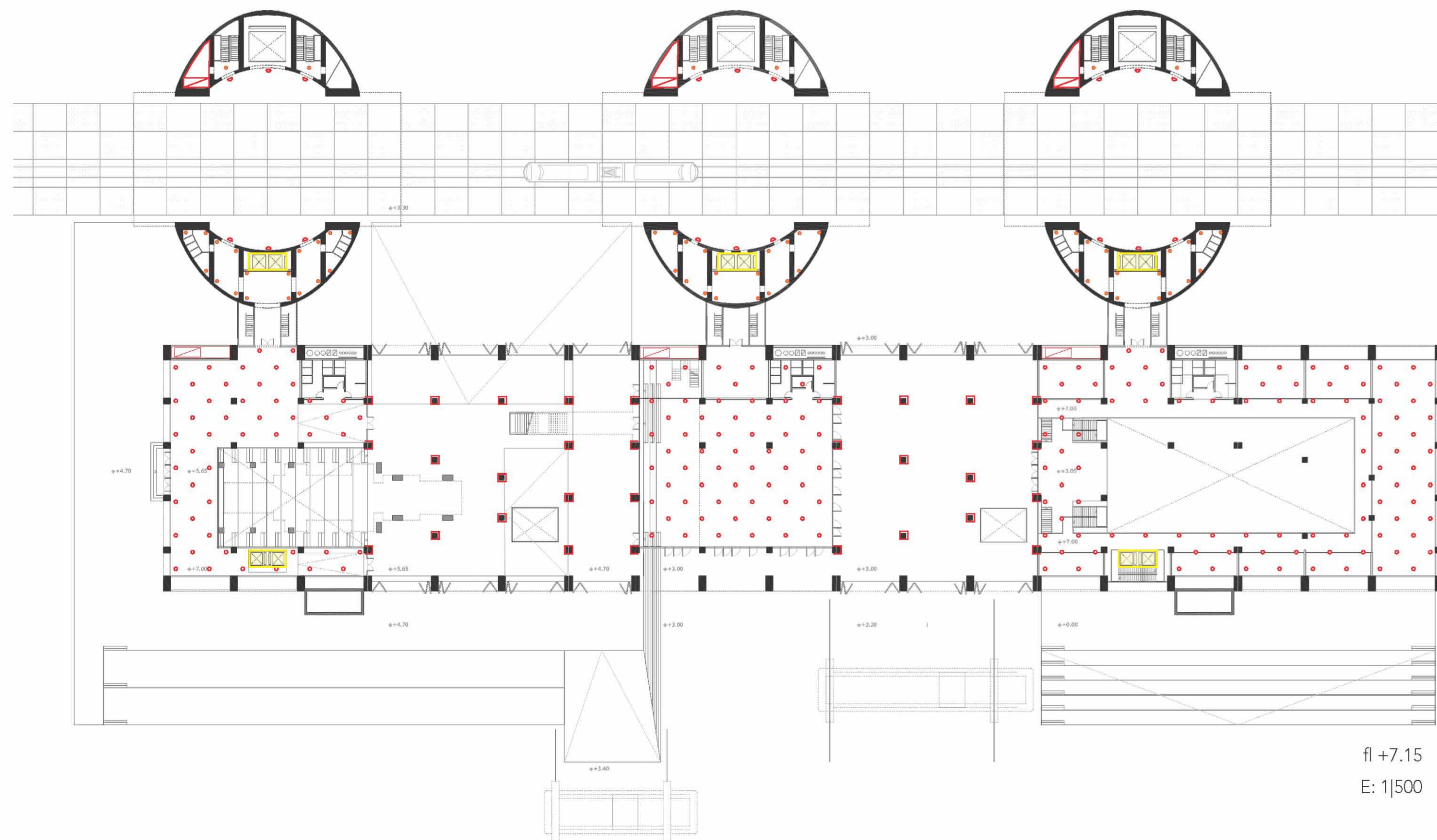


Atmospheres

Light is understood as energy and the intention is to use it in a rational and honest way. The designed illumination is meant to work with the industrial character and atmosphere of the building, without bringing attention upon itself, except in punctual cases in which the light is the clear and fair protagonist. In the exterior, the facade is not artificially illuminated and only the light that comes from the interior, depending on the activities taking place, will appear.

Due to the width of the nave portico, the central parts do not receive enough natural light. Thanks to the perimetral organization of the floorplan and the use of skylights and connections between spaces, sufficient illumination levels can be achieved in the majority of cases.

The illumination is adapted to the characteristics of each space and is used as a resort to emphasize the spatial conditions. At the same time, it adapts to the illumination conditions required by each specific function. (lecture areas: 500-600 lux / restaurant: 250 lux/halls and common areas: 300 lux/ auditorium and polyvalent rooms: 150-300 lux) In the museum space the levels can be altered according to the exhibited material, so an easily adaptable system is provided.

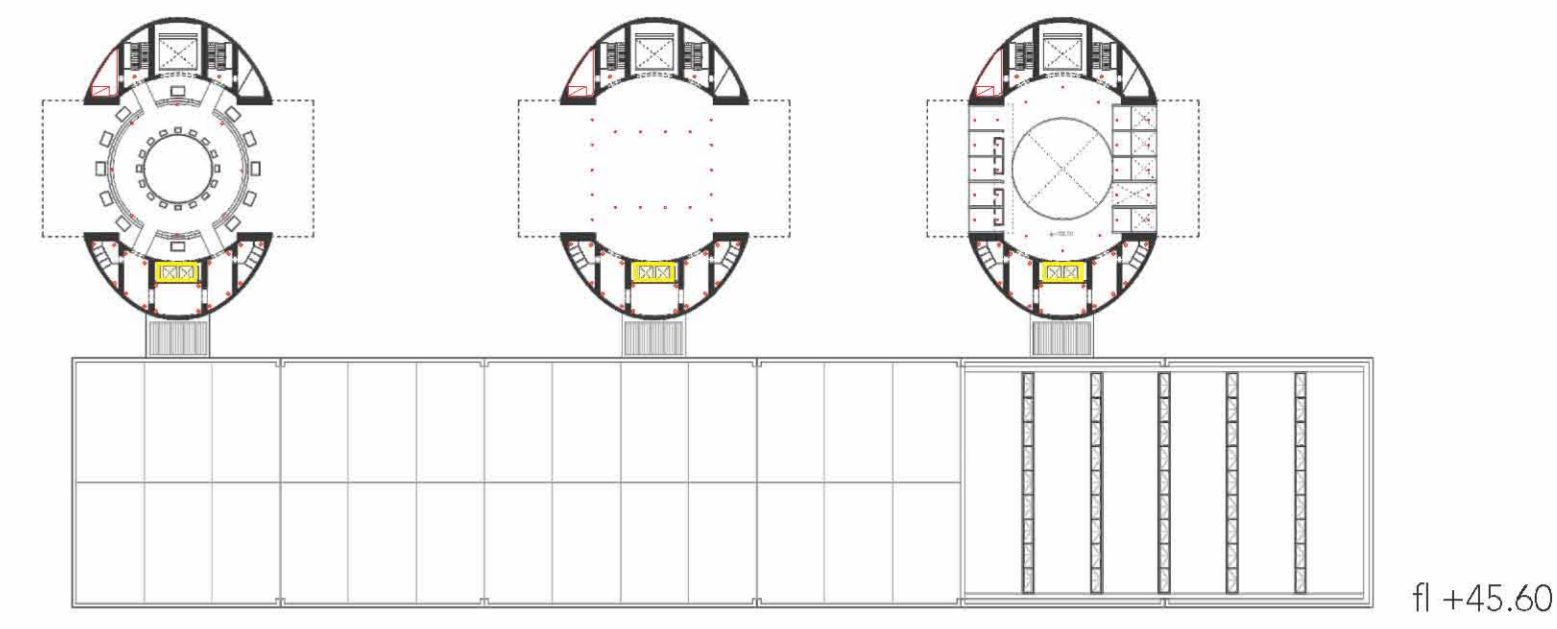


fl +7.15
E: 1/500

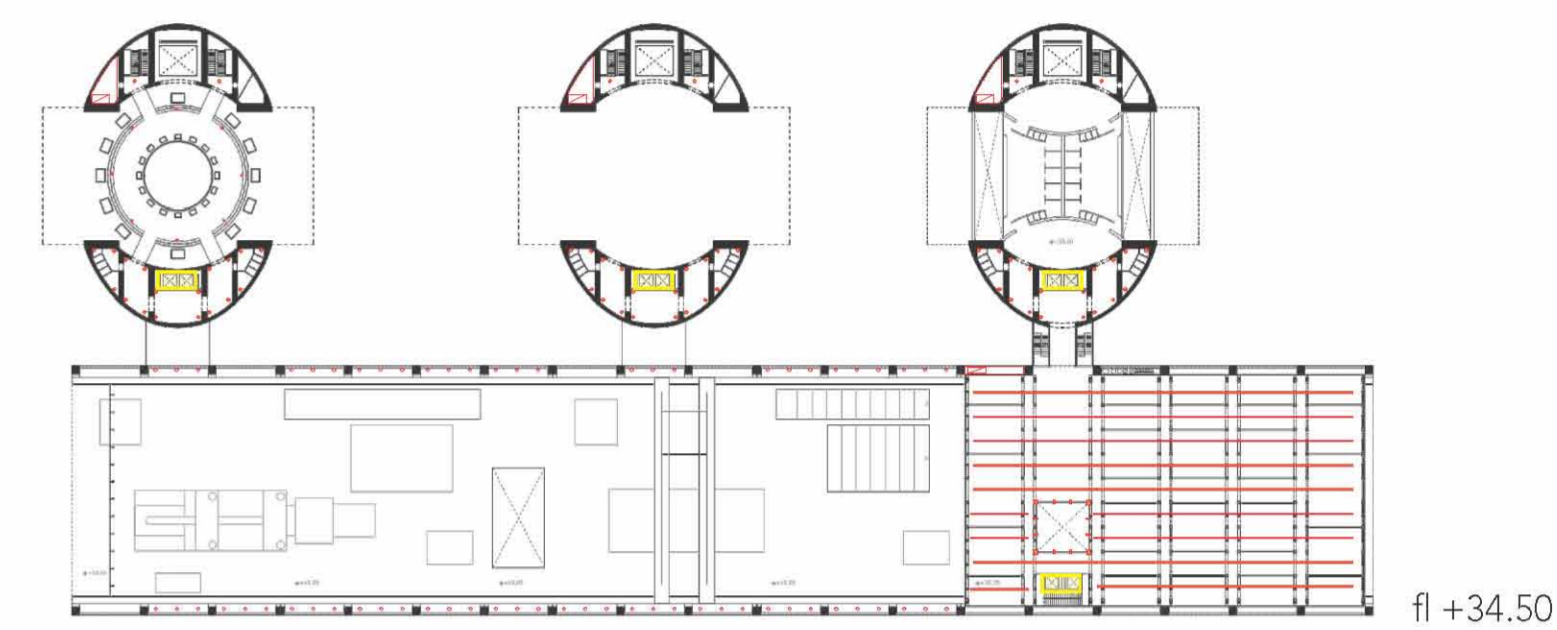
- Strip light mounted
- Strip light suspended
- Focal light mounted orientation towers
- Focal light suspended
- Tower entrances
- Column light
- Downlight mounted on turbine
- Vertical strip light on void
- Double sided lighting wall
- Translucent lighting panel for lift shafts
- Translucent lighting panels for orientation
- Vertical shaft turbine hall
- Vertical shaft towers
- Technical room

Legend

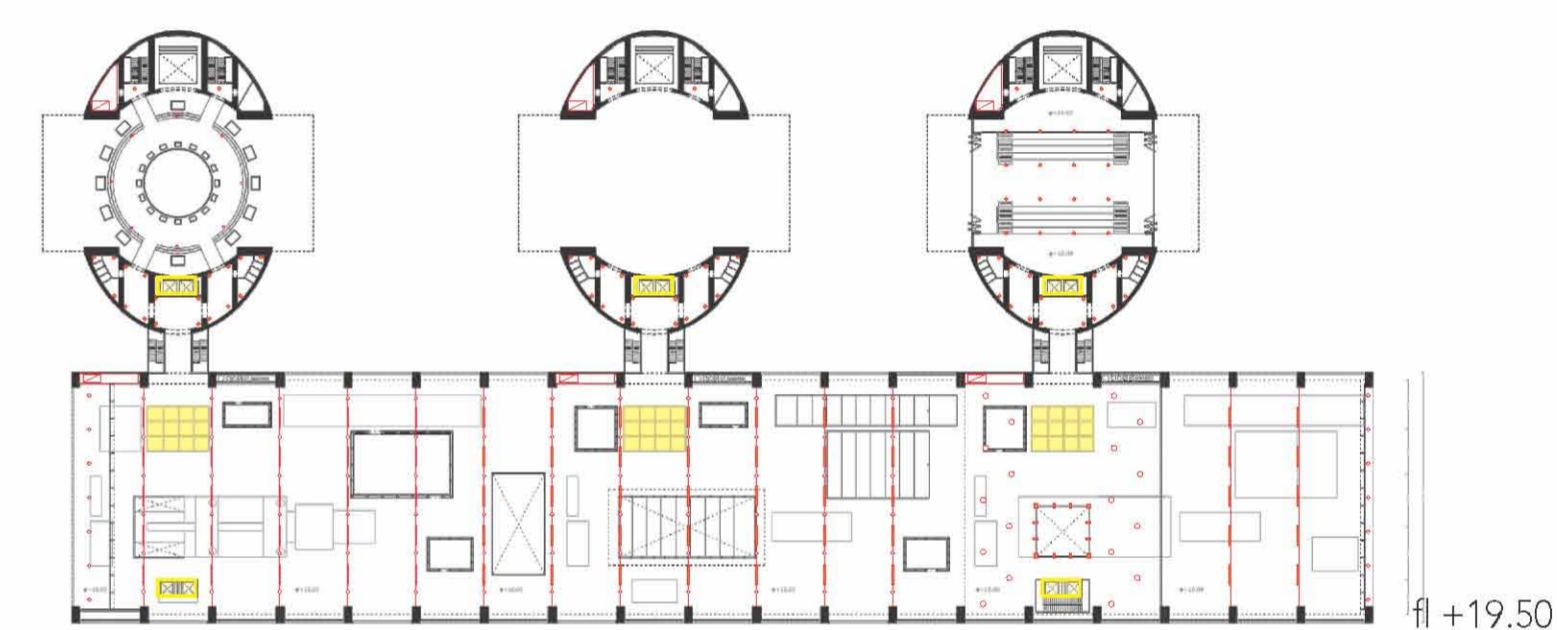
Floorplans
E: 1/1.000



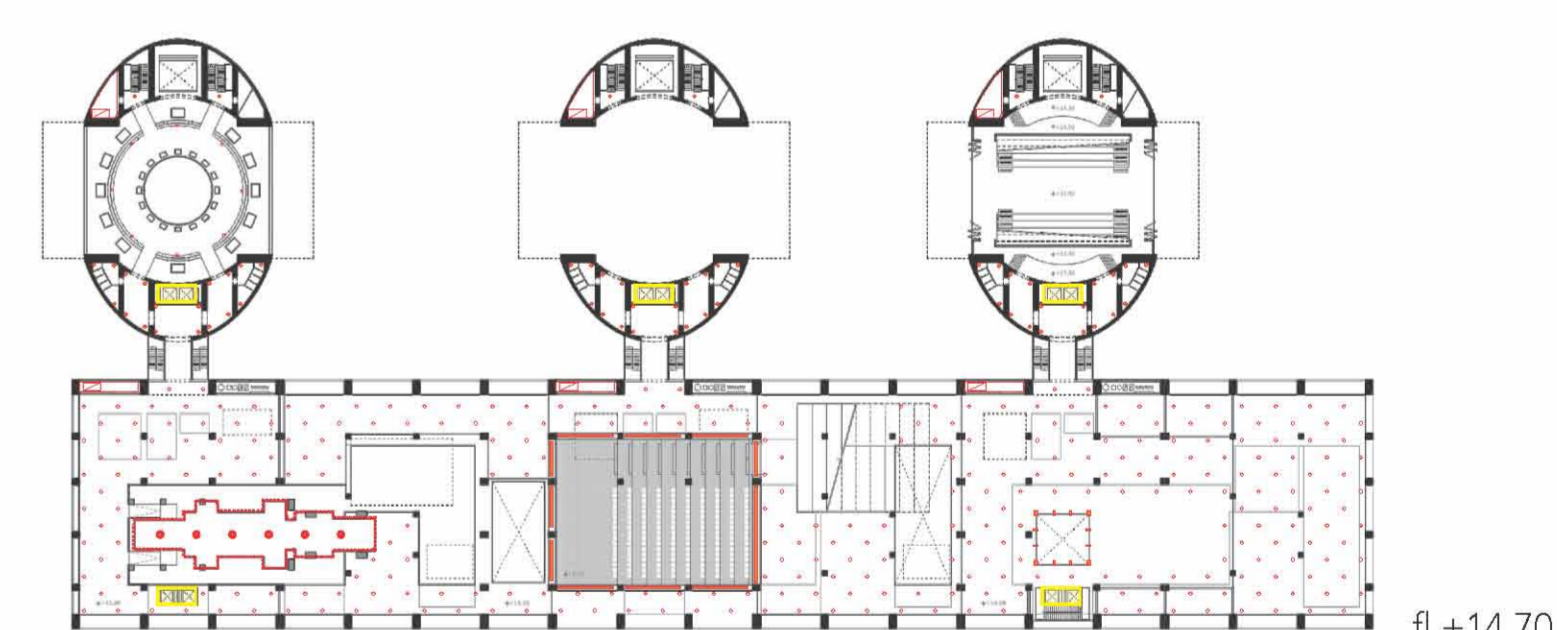
fl +45.60



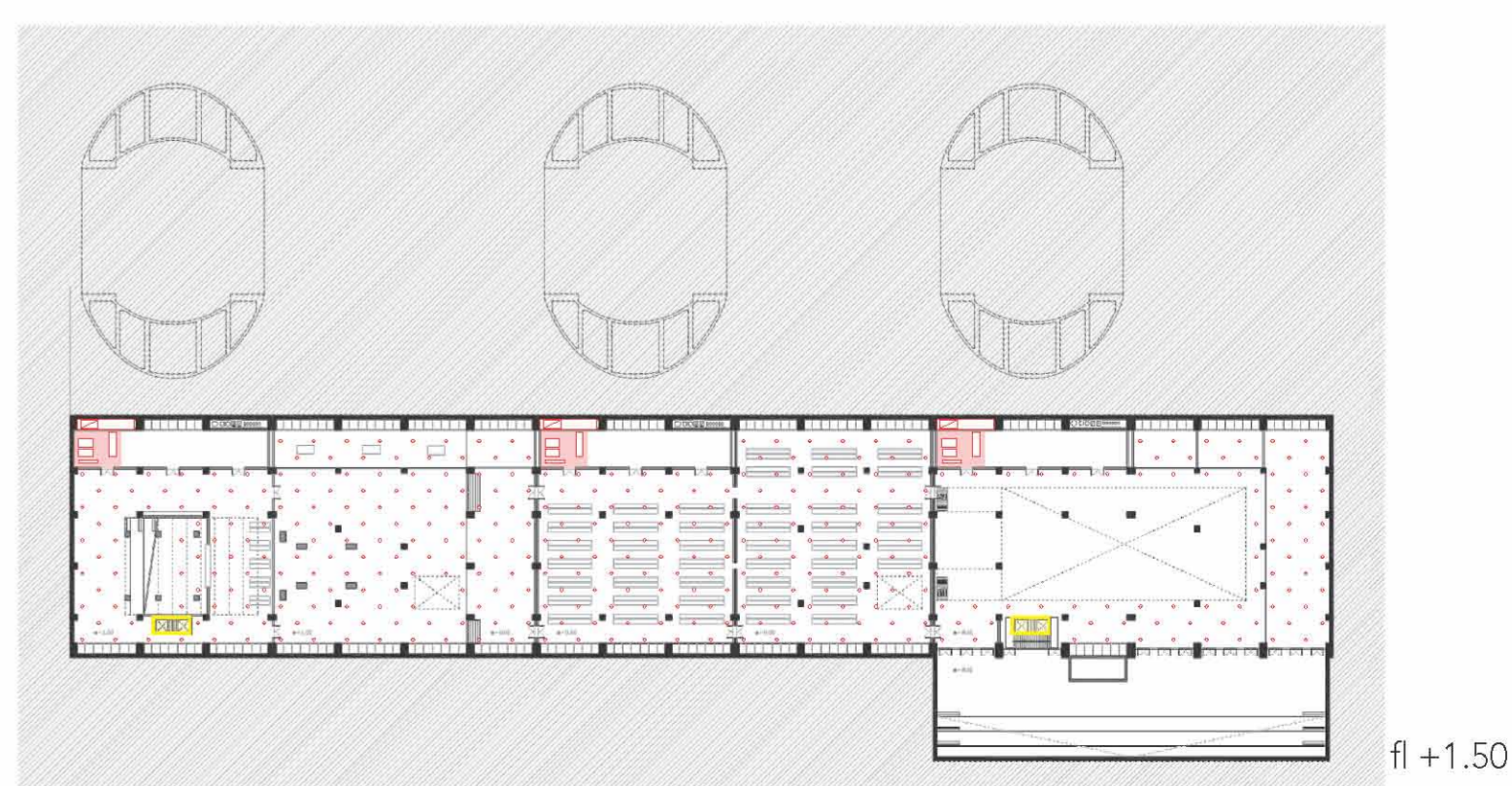
fl +34.50



fl +19.50



fl +14.70



fl +1.50