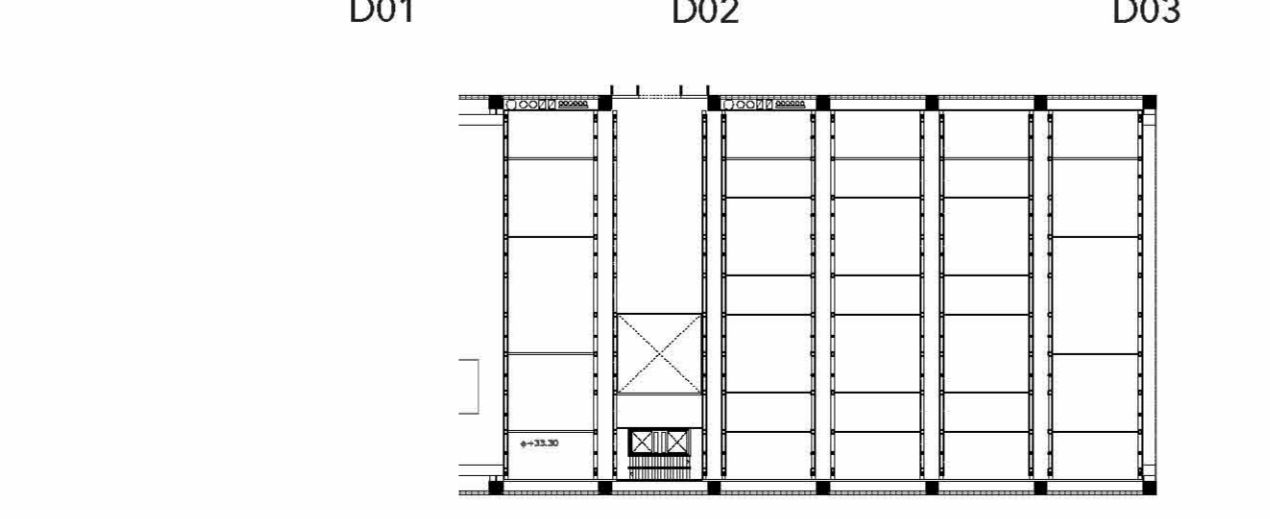
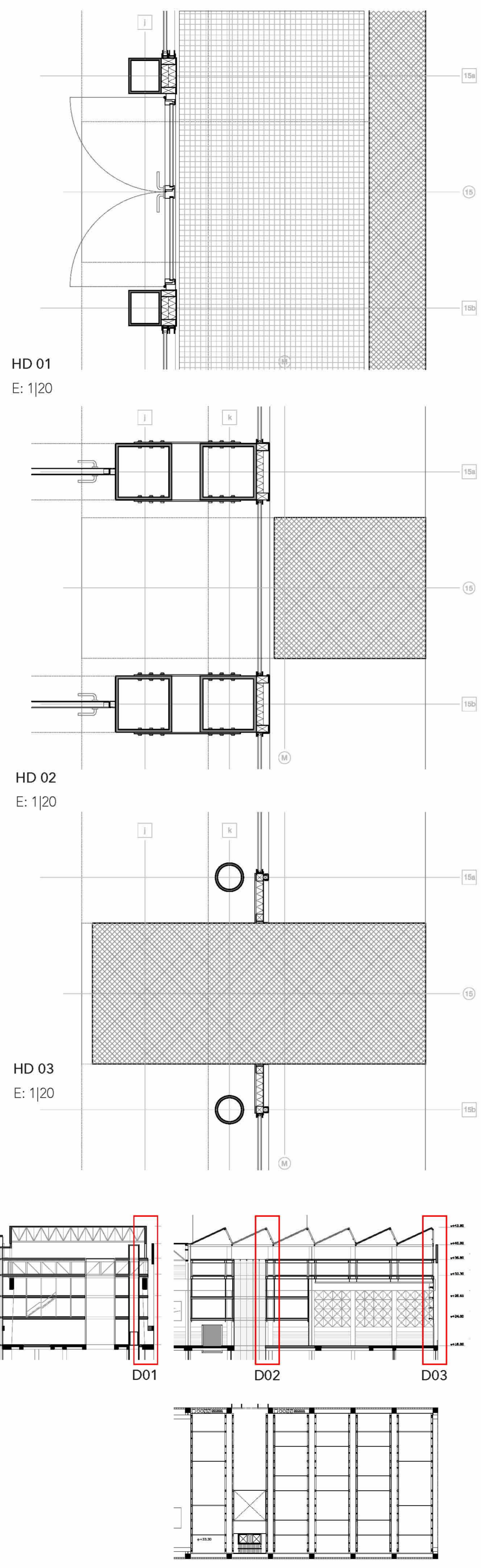
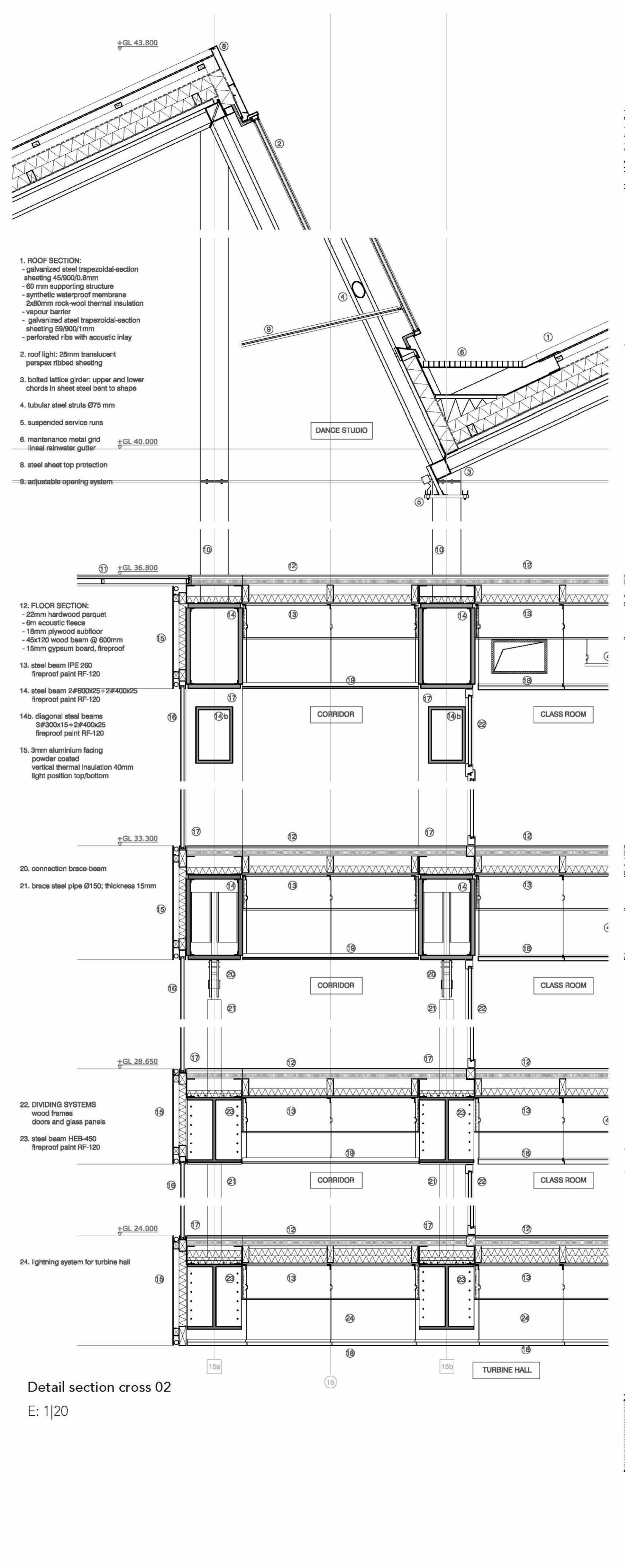


Detail section long 01
E: 1/20

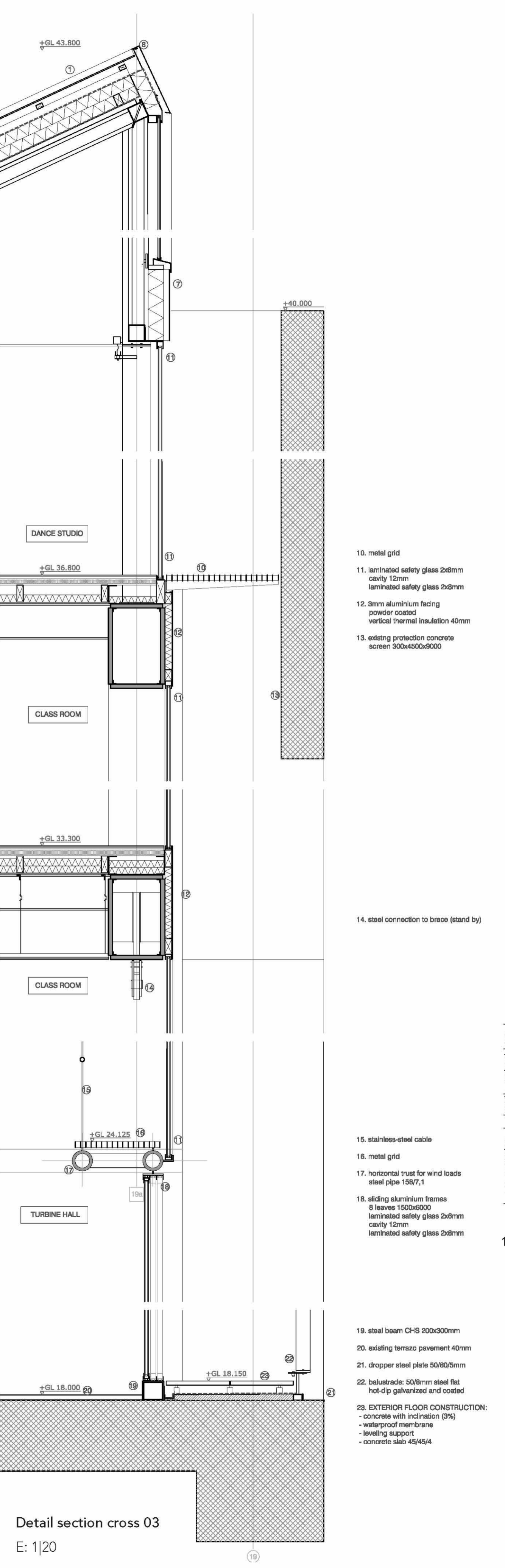
1. ROOF CONSTRUCTION
 - galvanized steel trapezoidal-section sheeting 45/900/0.8 mm
 - 60 mm supporting structure
 - synthetic waterproof membrane
 - 2x200mm rock-wool thermal insulation
 - vapour barrier
 - galvanized steel trapezoidal-section sheeting 59/900/1 mm
 - perforated ribs with acoustic inlay
2. roof light: 25mm translucent perspex ribbed sheeting
3. bolted lattice girder: upper and lower chords in sheet steel bent to shape
4. tubular steel struts Ø75 mm
5. suspended service runs
6. maintenance metal grid lineal rainwater gutter
7. FACADE CONSTRUCTION:
 - chromium steel trapezoidal sheeting 45/900/0.8mm
 - 2x40mm steel horizontal/vertical sections
 - 120 mm glass-wool thermal insulation
 - 80/500 mm sheet-steel cassettes, painted
8. steel sheet top protection
9. adjustable opening system
10. metal grid
11. laminated safety glass 2x2mm cavity 12mm laminated safety glass 2x2mm
12. 3mm aluminium facing powder coated vertical thermal insulation 40mm
13. existing protection concrete screen 300x450x900mm
14. cooling/heating pipe Ø200mm
15. waterproof membrane
16. 22mm hardwood parquet 8m acoustic fleece 18mm plywood subfloor 46x120 wood beam @ 600mm 15mm gypsum board, fireproof
17. existing concrete beam 280x1000mm
18. existing crane rail
19. connection brace-beam
20. HEB beam screwed to brace
21. existing concrete beam 400x1000mm
22. light position service runs
23. adjustable ventilation louvers anodized aluminium structural panels 1000x3000
24. sliding aluminium frames 2 leaves 1000x3000 laminated safety glass 2x2mm cavity 12mm laminated safety glass 2x2mm
25. metal grid waterproof membrane
26. lineal rainwater gutter folded steel sheet



Detail section cross 02
E: 1/20



Detail section cross 03
E: 1/20



Detail section cross 03
E: 1/20

10. metal grid
11. laminated safety glass 2x2mm cavity 12mm laminated safety glass 2x2mm
12. 3mm aluminium facing powder coated vertical thermal insulation 40mm
13. existing protection concrete screen 300x450x900
14. steel connection to brace (stand by)
15. stainless-steel cable
16. metal grid
17. horizontal truss for wind loads steel pipe 156/7,1
18. sliding aluminium frames 8 leaves 1500x6000 laminated safety glass 2x2mm cavity 12mm laminated safety glass 2x2mm
19. steel beam CHS 200x300mm
20. existing terrazo pavement 40mm
21. dropper steel plate 50Ø/5mm
22. balustrade: 50/8mm steel flat hot-dip galvanized and coated
23. EXTERIOR FLOOR CONSTRUCTION:
 - concrete with inclination (3%)
 - waterproof membrane
 - leveling support
 - concrete slab 45/45/4