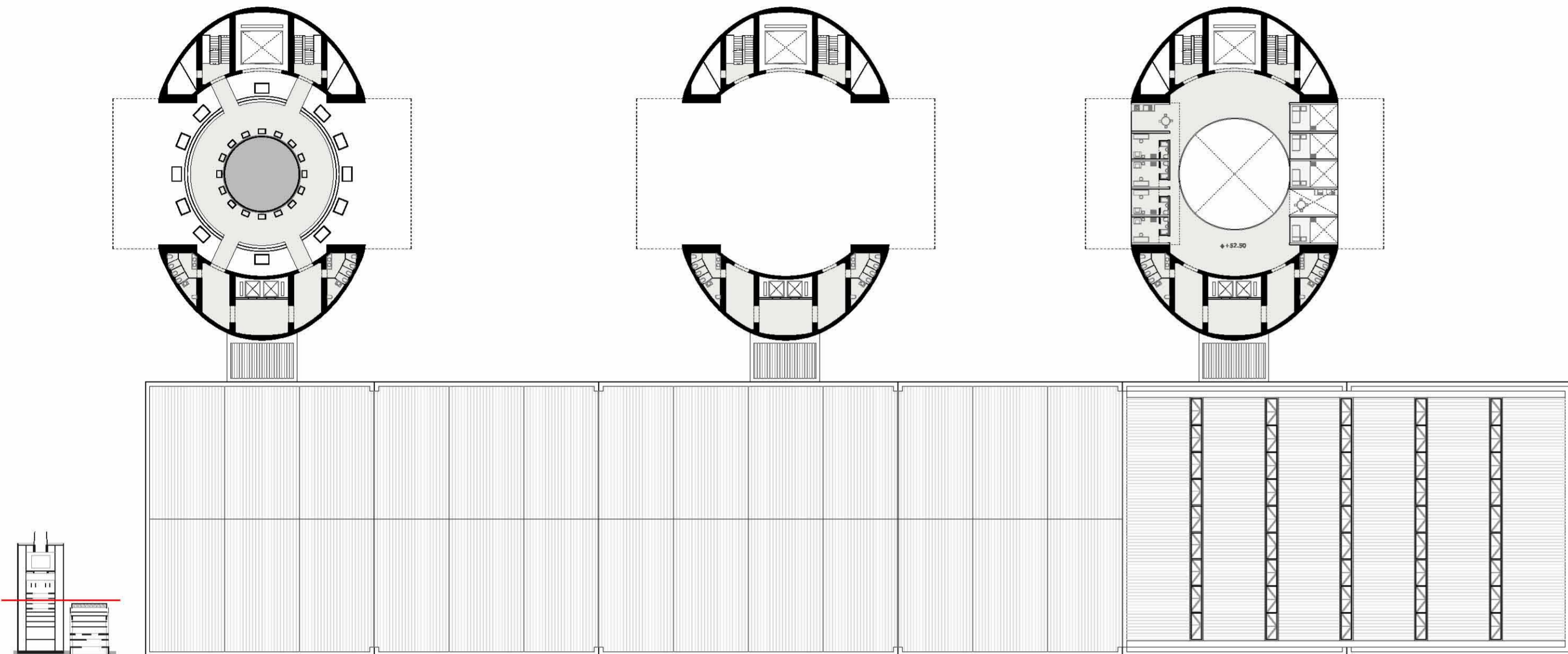


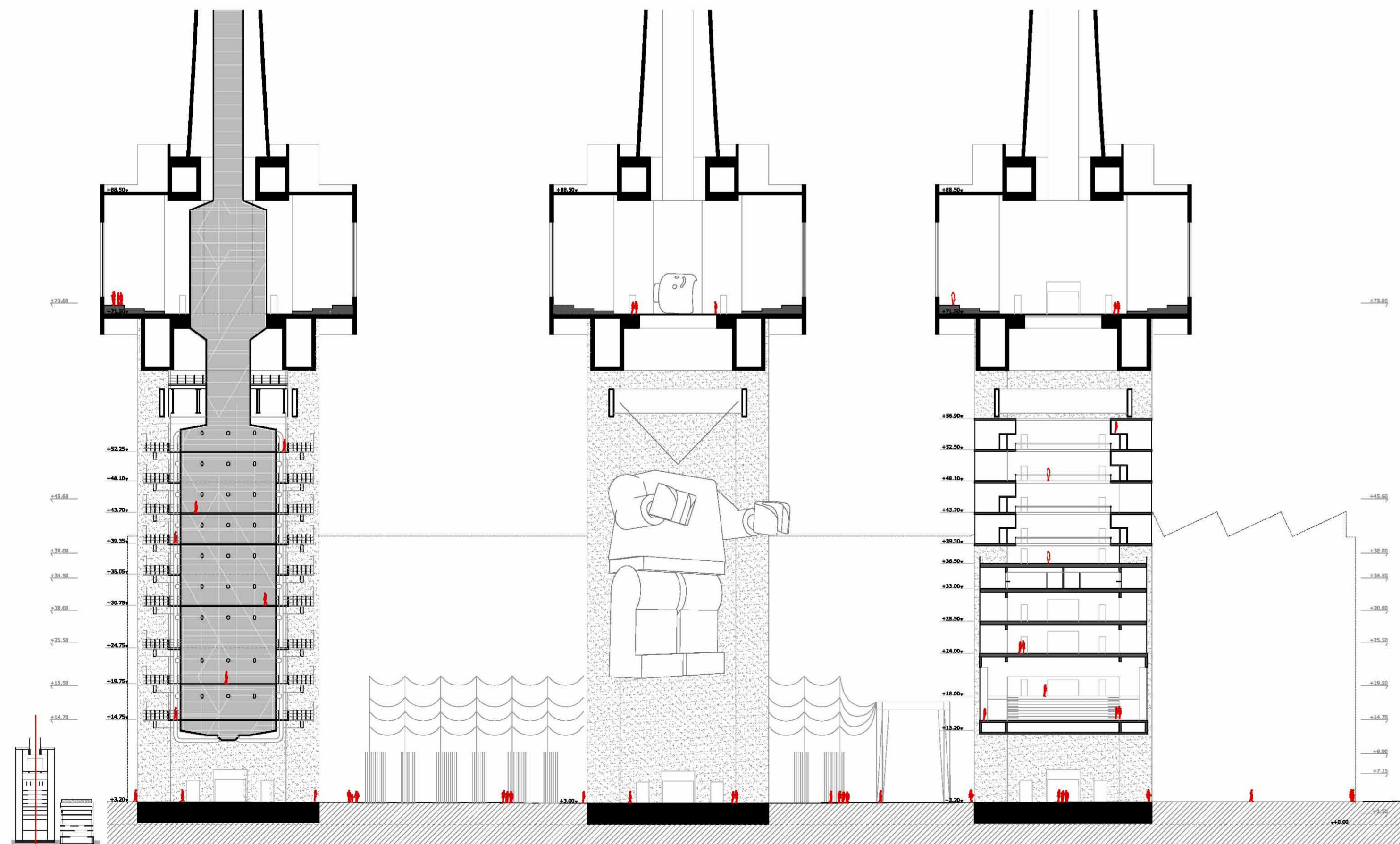
Floorplan level 14.70

E: 1/500



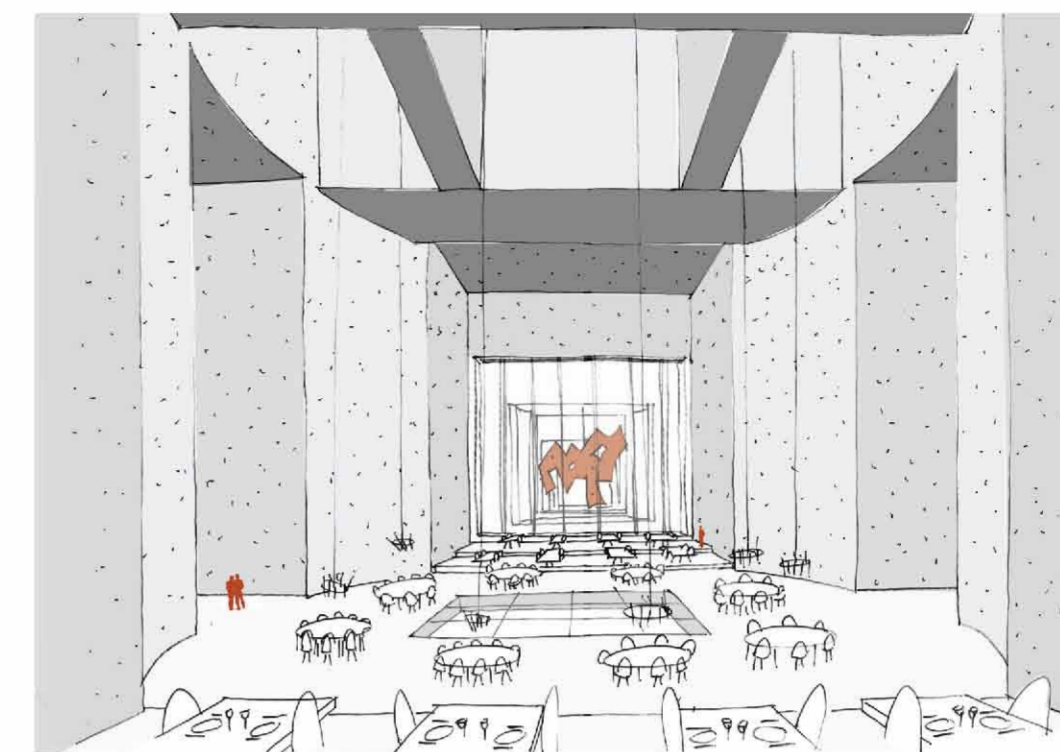
Floorplan level 14.70

E: 1/500



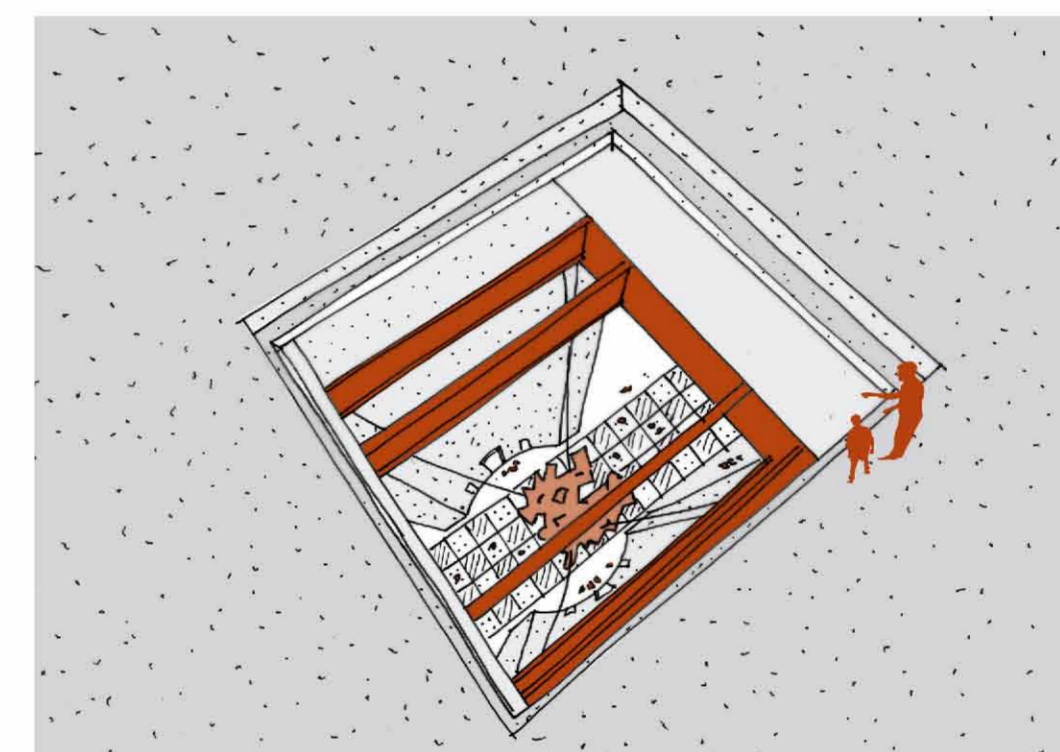
Section long

E: 1/500



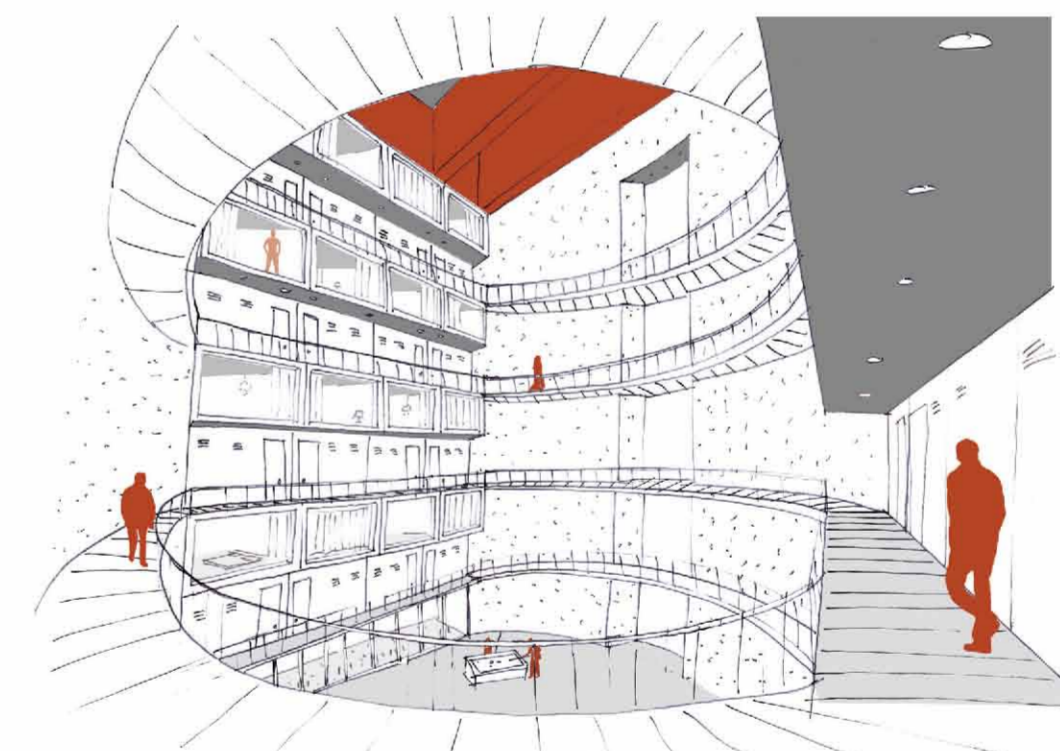
Through the large openings, the restaurant offers a view of the artistic demonstrations taking place in the other tower. The large size of the designated area allows many possible distributions and events which along with the terrace system of the space, left behind from the building's industrial time, creates a very special place for a restaurant. The kitchen is placed in the central position, a recess area, freeing with this strategy all the openings and space. The access can be done directly from the boulevard, enabling the restaurant to run independently to the other program.

Restaurant



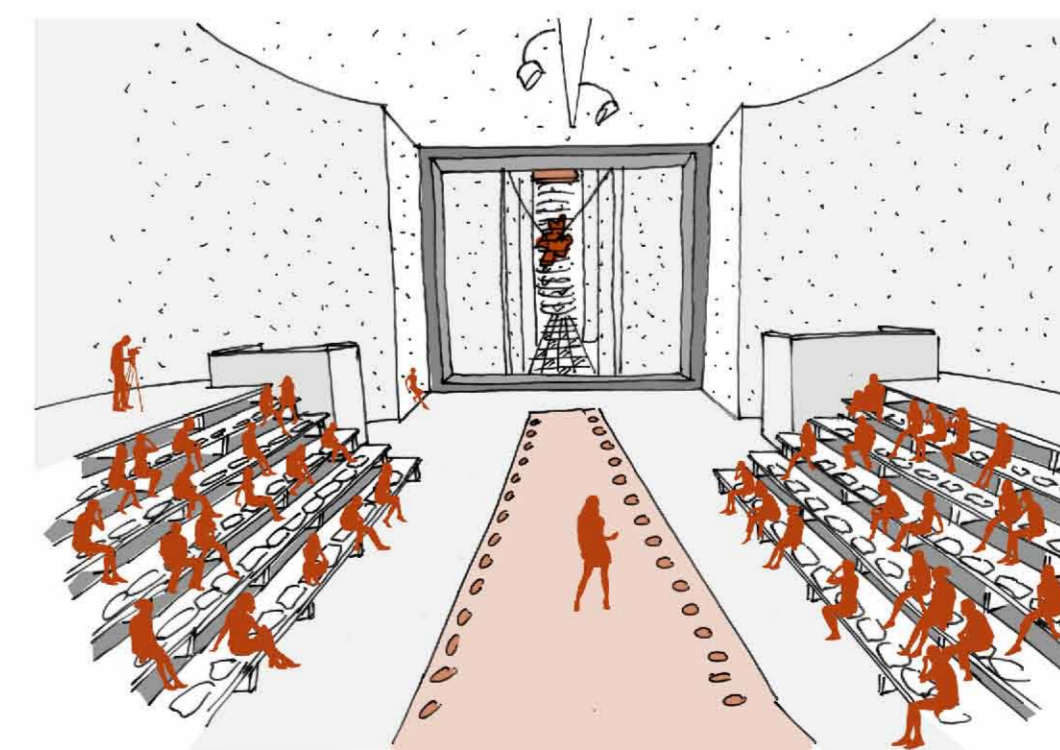
The empty tower offers a space for artistic interventions that challenge the artists to interact with the public space, the scale and the verticality of the place. It is a site for constant experimentation where the works of art are able to change the space. The massive opening at the top and the different openings on the tower offer the possibility of the works to be seen from multiple perspectives, enabling the artist to play with different perceptions.

Exhibition space



The third tower is organized around the central space by having the dwellings close the space, obtaining through this distribution the necessary light and air. As the program is based on short stays, the design of both the tower and the dwelling unit encourage relationships between the users. The impressive entrance hall provokes informal encounters and events, and the access to each dwelling occurs through the corridor space. The proposal works with double-height dwelling units, making them look into the central void, while containing only the basic necessities.

Dwellings



The placement of the theater piece over the new boulevard axis offers an interaction of the events with the public space. The artists and the audience access the site at different levels. The public access is located at the foyer generated in the turbine gallery. The seating terraces inside the theater offer different distribution possibilities that can be altered according to the performance.

Theater