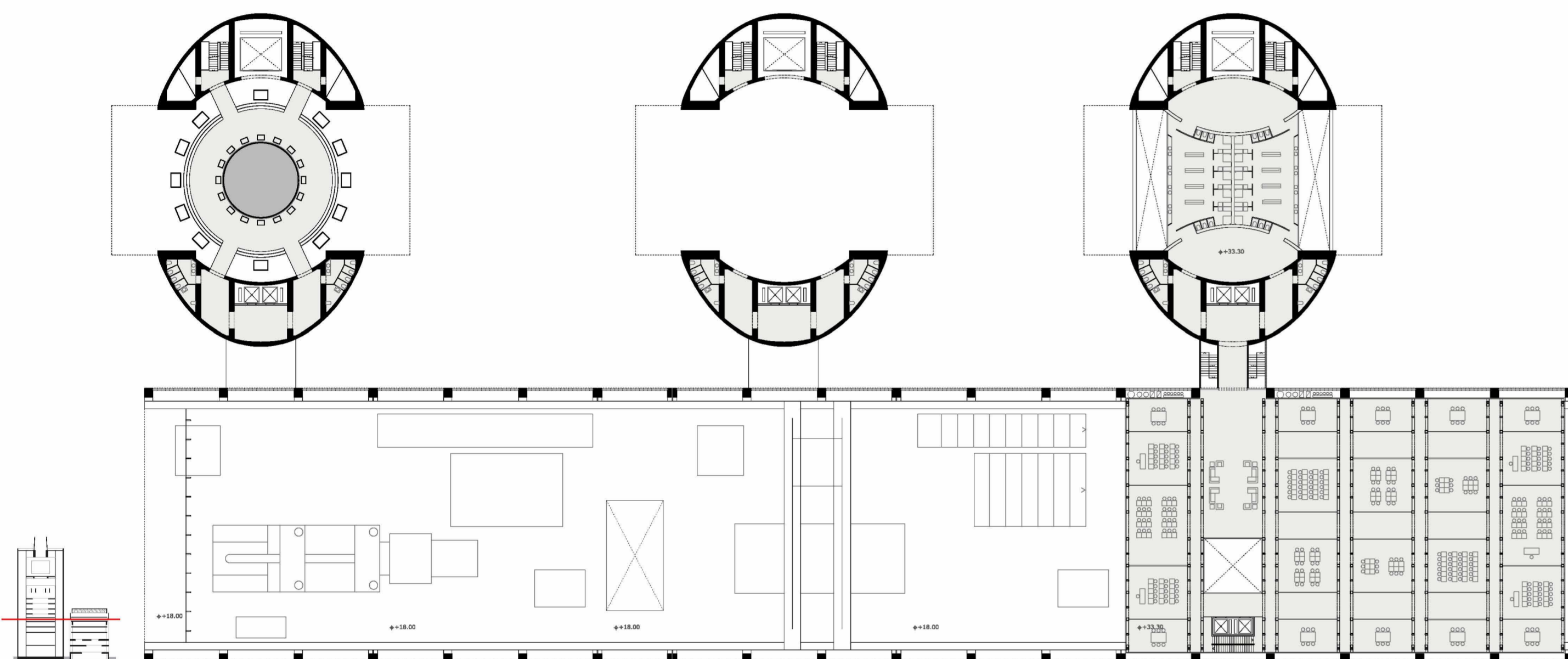


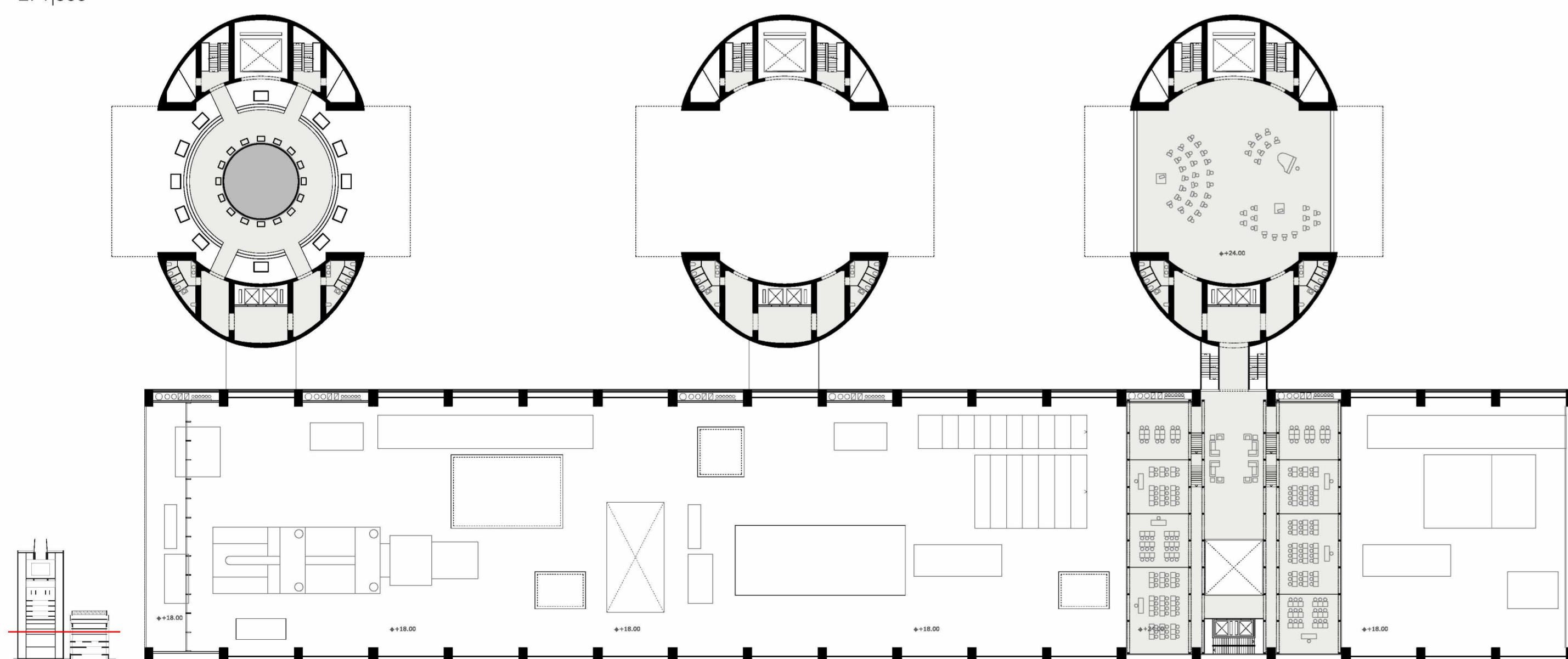
Floorplan level 14.70

E: 1/500



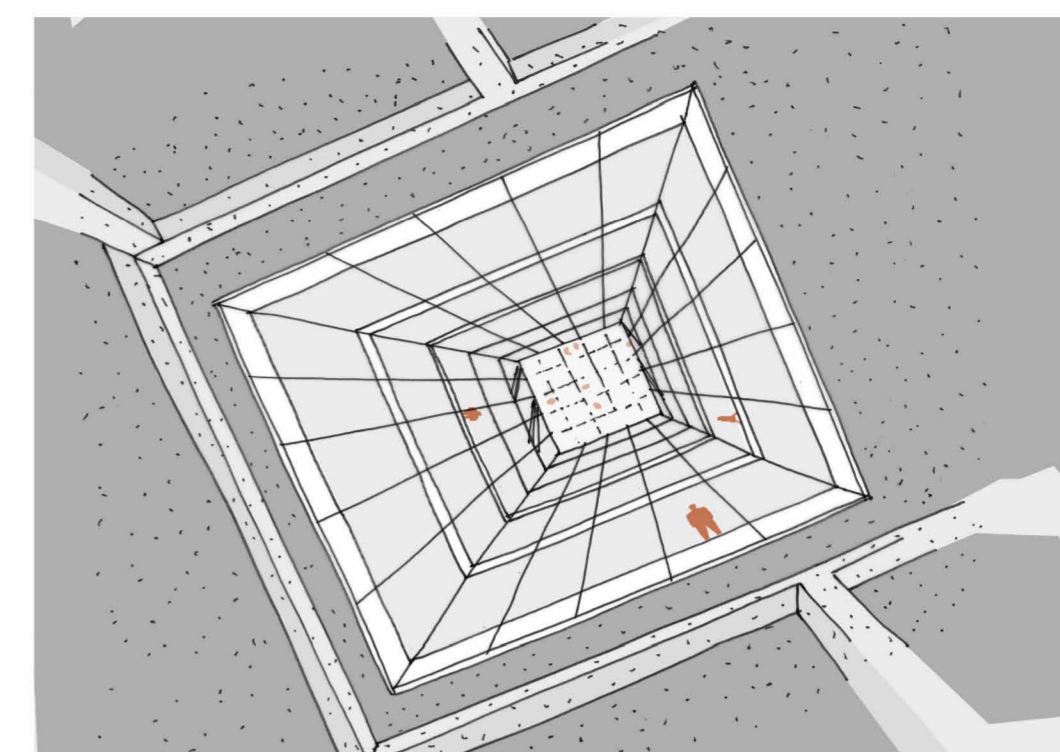
Floorplan level 14.70

E: 1/500



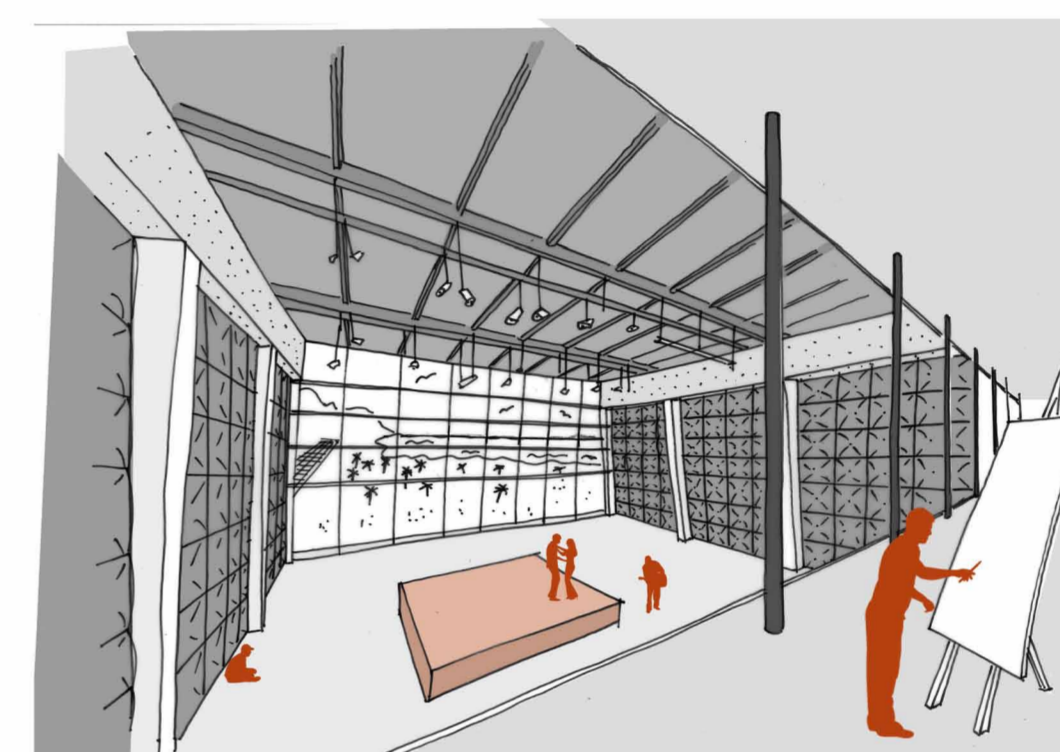
Floorplan level 14.70

E: 1/500



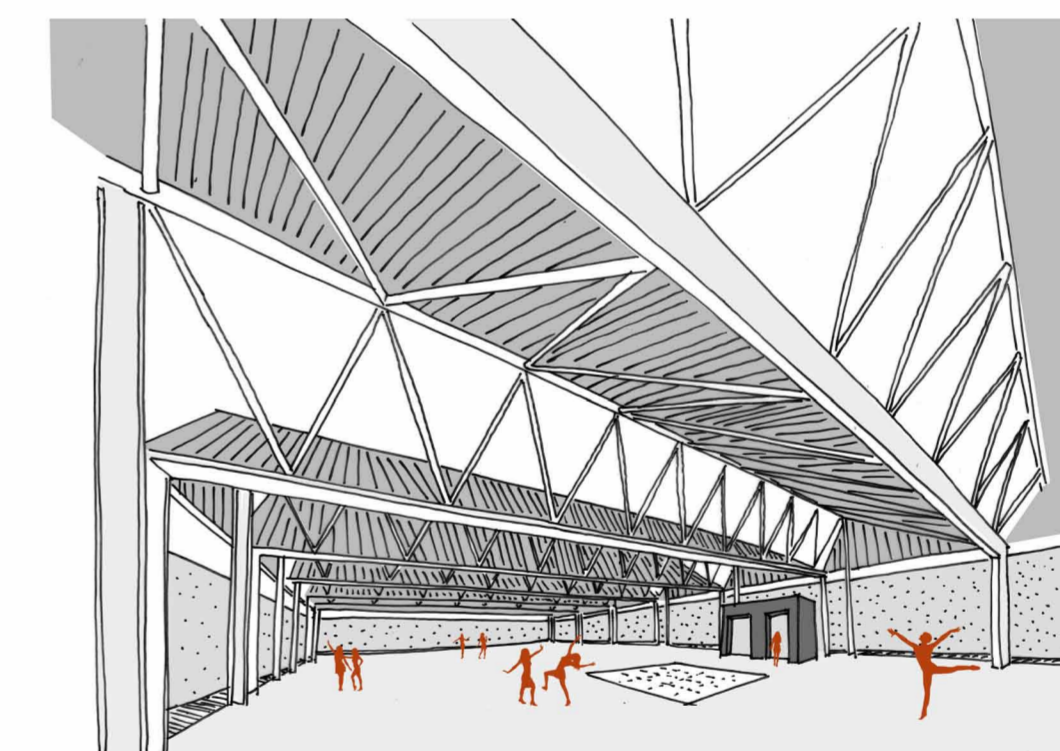
A large vertical opening penetrates the artists' block stimulating visual contact between the different users in order to reinforce the feeling of collective belonging. The void allows artists to experience the extraordinary scale and dimensions of the turbine nave, whilst feeding natural or artificial light to the circulation spaces that surround it. The verticality of the space is emphasized through the technical enclosure of the void.

Artist's void



Through the introduction of the artists' body, a space for both public and artist use is originated at the end of the nave. The north facade is converted into a huge opening that works from both directions: it opens an amazing viewpoint to the sea while it can also act as a stage, offering a view from the exterior. Both ceilings and walls are equipped to satisfy optimal conditions for any of the possible uses.

Multifunctional room



A large horizontal surface, free of pillars, with good central light appropriate for dance practice. The existing enveloping concrete wall contains the space, concentrating all the attention on the inside. The wall creates an exterior surrounding corridor that offers to the user the opportunity of relaxing from the activity, helped by the sound of the sea.

Dance room



The system made up of vierendel beams and corresponding straps define a spatial structure organized into both circulation and static strips. The partitions between spaces are transparent and allow the simultaneous vision of the activities. From these spaces the turbine hall can be overseen in its totality. Plus the materials used convey a light weightiness that contrasts with the heaviness of the preexistent concrete.

Lecture rooms