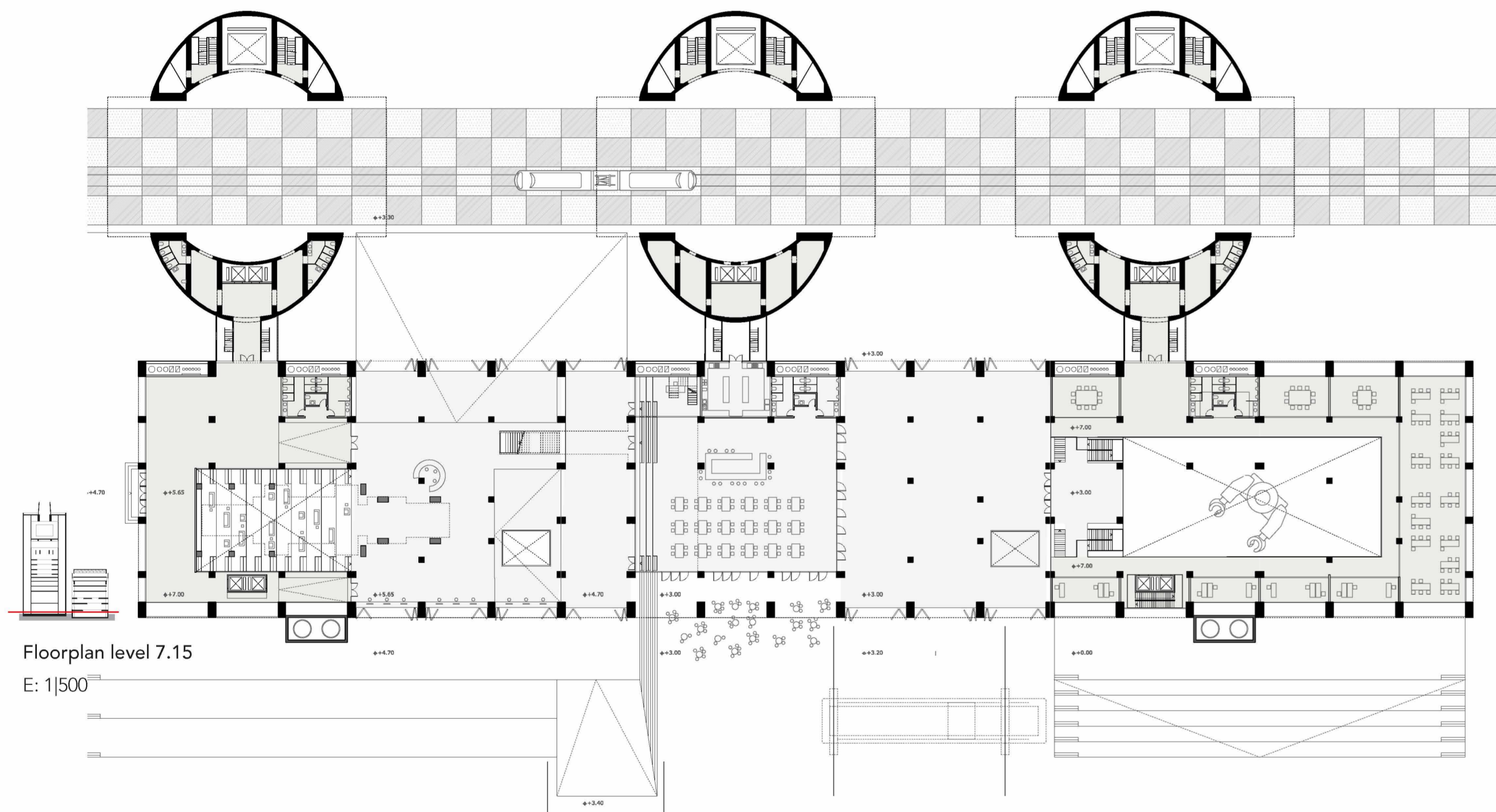


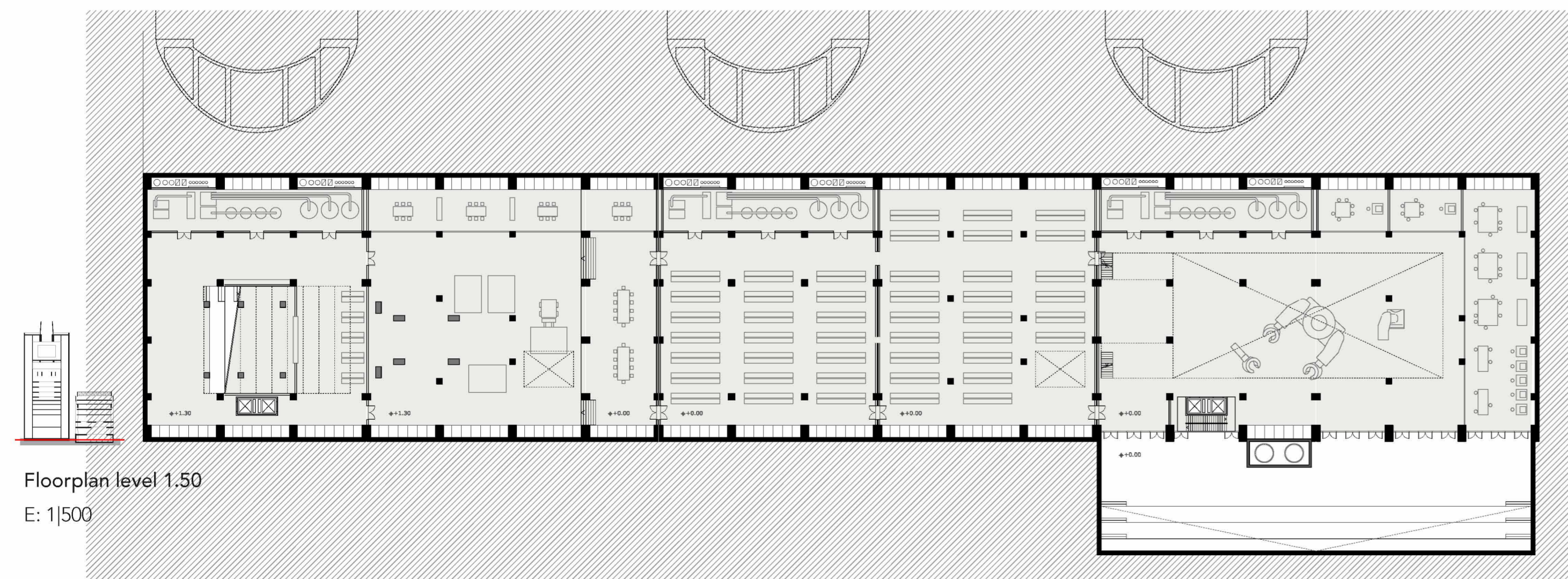
Floorplan level 14.70

E: 1/500



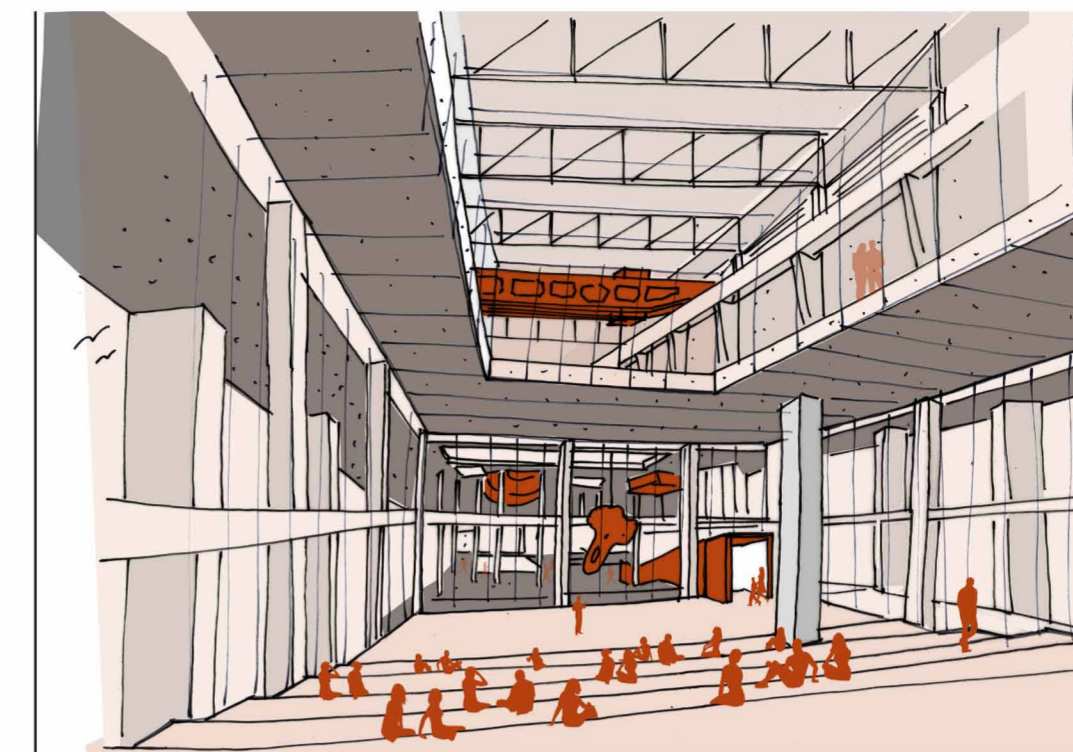
Floorplan level 7.15

E: 1/500



Floorplan level 1.50

E: 1/500



The space obtained by the extraction of the second turbine is occupied by an auditorium piece, with a 500 spectator capacity. The introduction of this object changes completely the understanding of the space of the nave, it becomes its new heart. Its continuous and translucent envelope offers new possibilities of relations both among the interior spaces and the exterior by allowing the visualization of the auditorium from the exhibition space. The crane, reminiscent of the building's past, can be used to activate the backstage. However, when the piece is not used as auditorium, it opens, transforming into a grand access for the upper levels.

Auditorium



As the third turbine is taken out, a generous space is left behind for the artistic creation of large format works. This very high central space works as a cloister, the different artists' workshops are surrounding a common central space that can be opened to the exterior. At the same time it is the central point for the well functioning of the artists' sphere, working as an entrance hall with all the routings organized around it.

Artist's workshop



Underneath the turbine, a space designed for relaxation takes place. The slightly stepped area is used to generate a projection space that leads to both the lockers and the archive. The properties of this area, close to the main entrance hall, make it a multi-purpose exhibition space that can complement other display areas.

Turbine lounge



An unstable space from where the whole building can be understood. While the turbine lays above the visitor, across the cafeteria it can be observed how the trucks download materials for the artists, how the users move through the auditorium or see the crane shifting. The entrance to the CIE is also visible from this sector. The hall is raised slightly above street level, using a ramp to emphasize the access. All the space can easily be converted into an exhibition space as the holes that connect the turbine gallery with the archive are kept.

Entrance hall