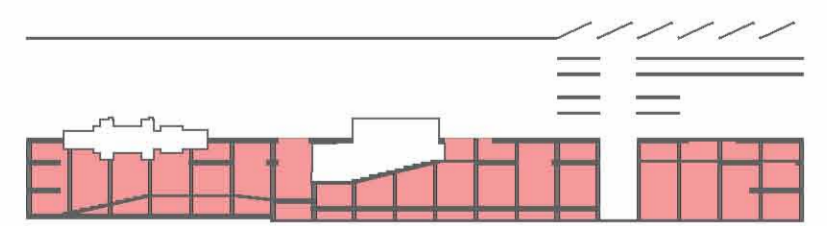
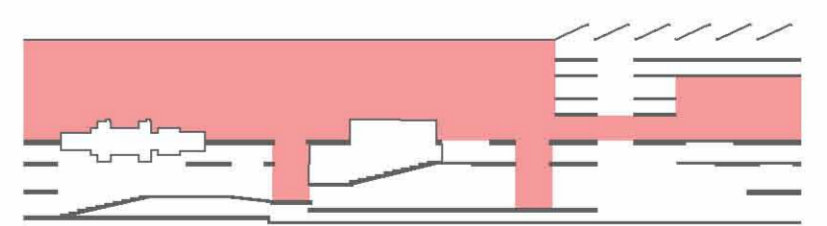


Long Section  
E: 1/250

architecture | section | 08



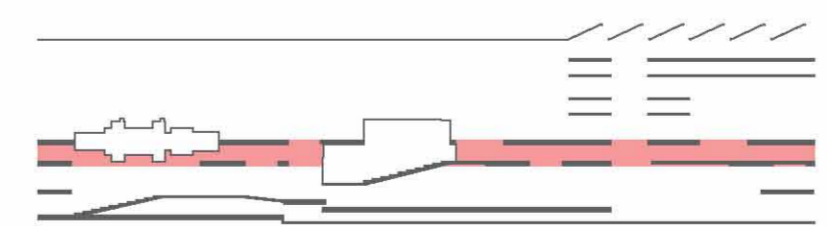
**Generic basement**  
The first floors provide a continuous space defined by the existing structure and the pillar grid. The different spaces are qualified by the exceptions.



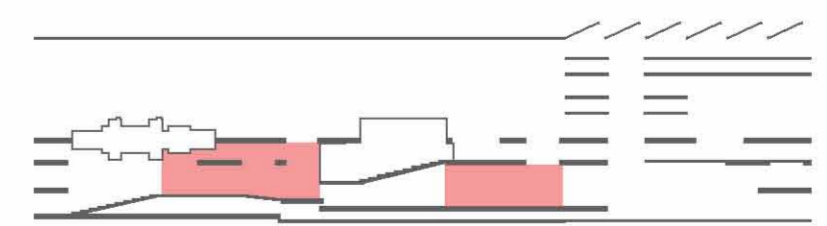
**Big gallery**  
The old turbine hall becomes a huge continuous gallery space which is made special by art's presence. Working with the holes provides multiple ways of showing and appreciating the exhibited art.



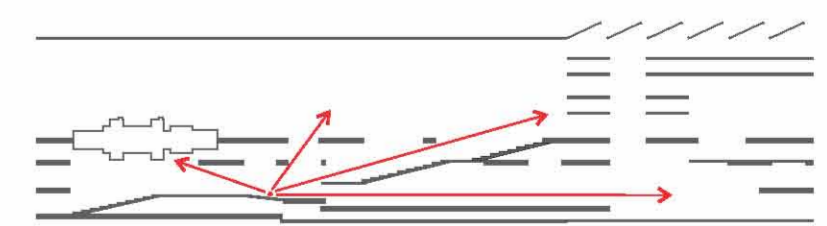
**Strategic intensity**  
Three repeated blocks, each with its own turbine. Each one of them is approached differently to create three different experiences: Turbine-enclosed / Auditorium-translucent / Void-open



**Supply floor**  
The level 13,20m, which lies at the middle of the building, brings together all the logistics and distributes them to upper and lower floors. At the same time it acts as a downstage, it activates and frees the turbine hall.



**Public routes**  
Two paths cross the building at ground level creating a total integration with the public space by forming this transition sector between the new boulevard and the square. These circulation spaces are understood as cavities that can be used for many events.



**Spatial continuity**  
The floors lose their stratified and parallel condition as a consequence of including the oblique condition associated to continuous space. It generates a permeable entity whose voids allow many connections and interactions. From the entrance hall, the entire organization and size of the building is understood.