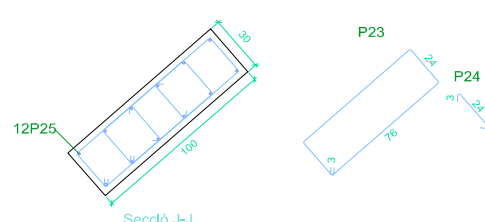
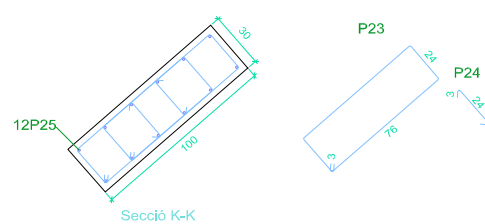
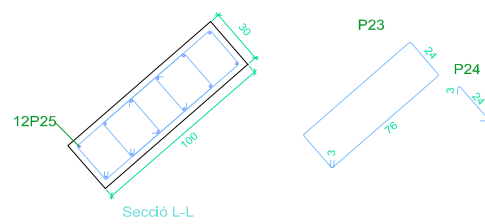
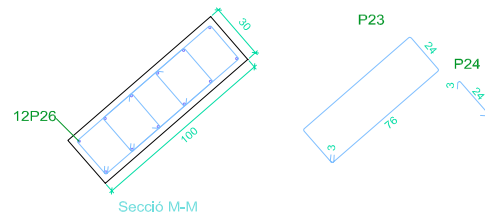
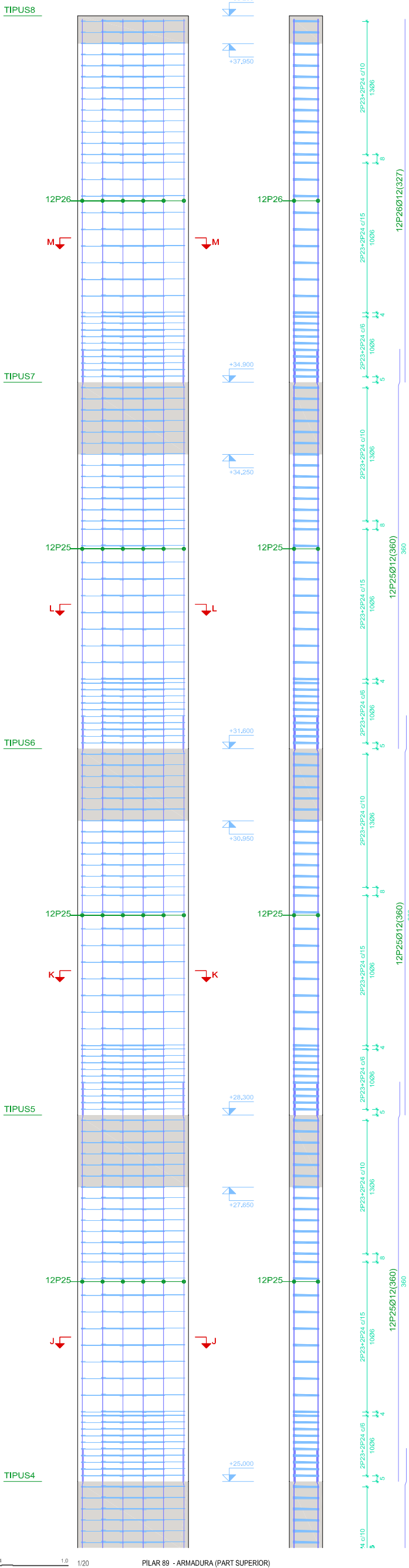
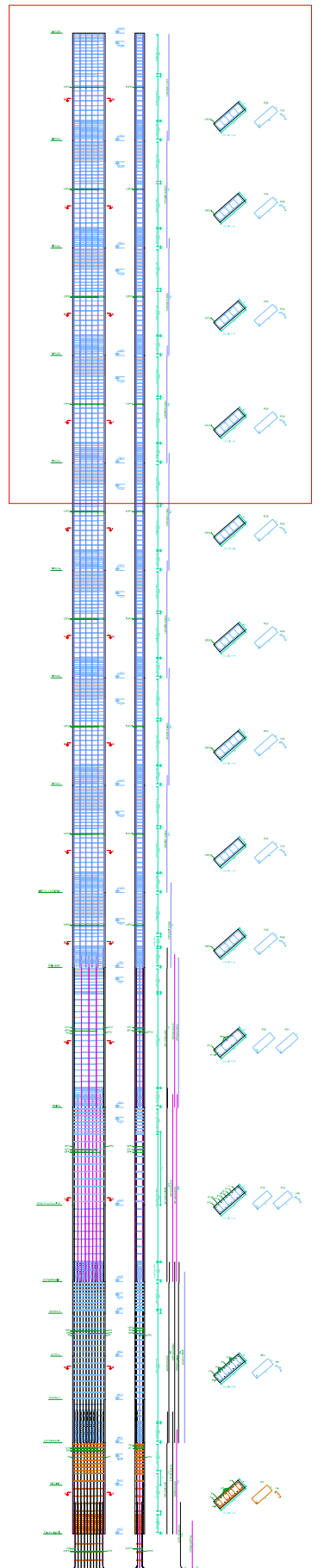


Pos.	Diam.	No.	Long. (cm)	Total (cm)
1	Ø25	8	375	3000
2	Ø25	12	375	4500
3	Ø16	2	320	640
4	Ø8	50	183	9150
5	Ø8	100	36	3600
6	Ø20	4	555	2220
7	Ø20	16	555	8880
8	Ø20	2	555	1110
9	Ø12	2	525	1050
10	Ø6	78	187	14586
11	Ø6	189	33	6237
12	Ø20	4	595	2380
13	Ø16	8	575	4600
14	Ø16	6	575	3450
15	Ø6	36	173	6228
16	Ø6	36	172	6192
17	Ø20	4	490	1960
18	Ø16	6	470	2820
19	Ø12	2	460	920
20	Ø6	35	196	6860
21	Ø6	35	195	6825
22	Ø12	12	260	3120
23	Ø6	580	204	118320
24	Ø6	580	32	18560
25	Ø12	84	360	30240
26	Ø12	12	327	3924
27	Ø25	20	230	4600
28	Ø16	2	175	350
29	Ø8	6	166	996
30	Ø8	12	31	372



Formigó: HA-25, Yc=1.5
 Acer laminat i armat: S275
 Acers en sostres: B 500 S, Ys=1.15

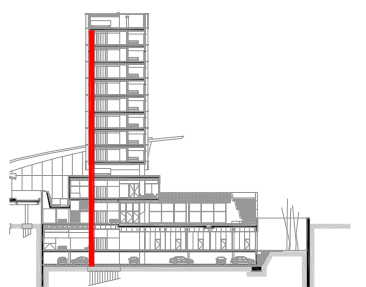
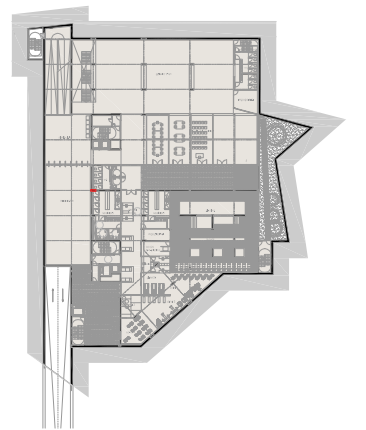
ARMAT DE PILARS



PILAR 89 - Secció completa

1.0 2.0 5.0 1/100

Posició pilar 89



Sec. armadura 1/20 / Sec. referència 1/100 / Mosca 1.750
 DIMENSIONAT ESTRUCTURA I ARMATS