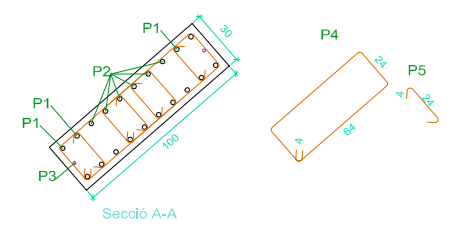
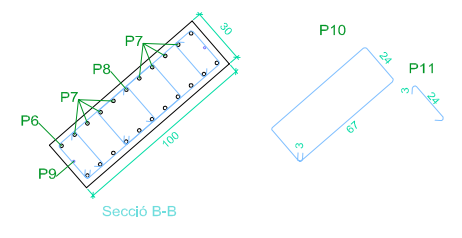
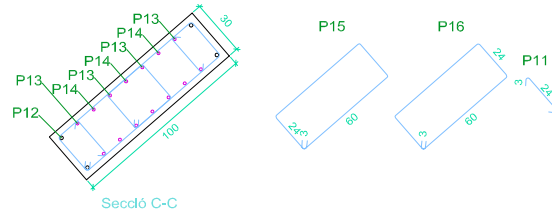
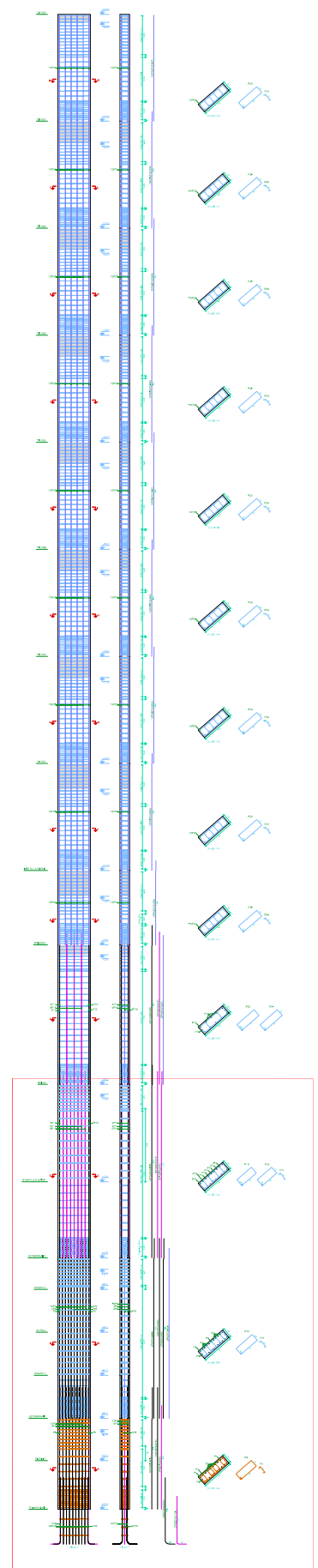


PILAR 89 - ARMADURA (PART INFERIOR)



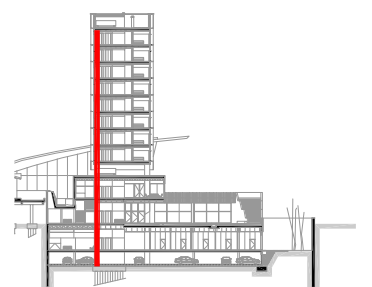
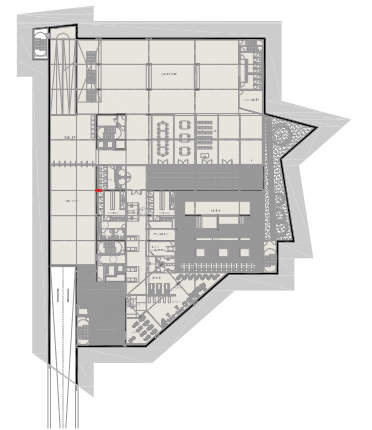
Formigó: HA-25, Yc=1.5
 Acer laminat i armat: S275
 Acers en sostres: B 500 S, Ys=1.15

ARMAT DE PILARS



PILAR 89 - Secció completa
 1.0 2.0 5.0 1/100

Posició pilar 89



Sec. armadura 1:20 / Sec. referència 1:100 / Mosca 1:750
 DIMENSIONAT ESTRUCTURA I ARMATS