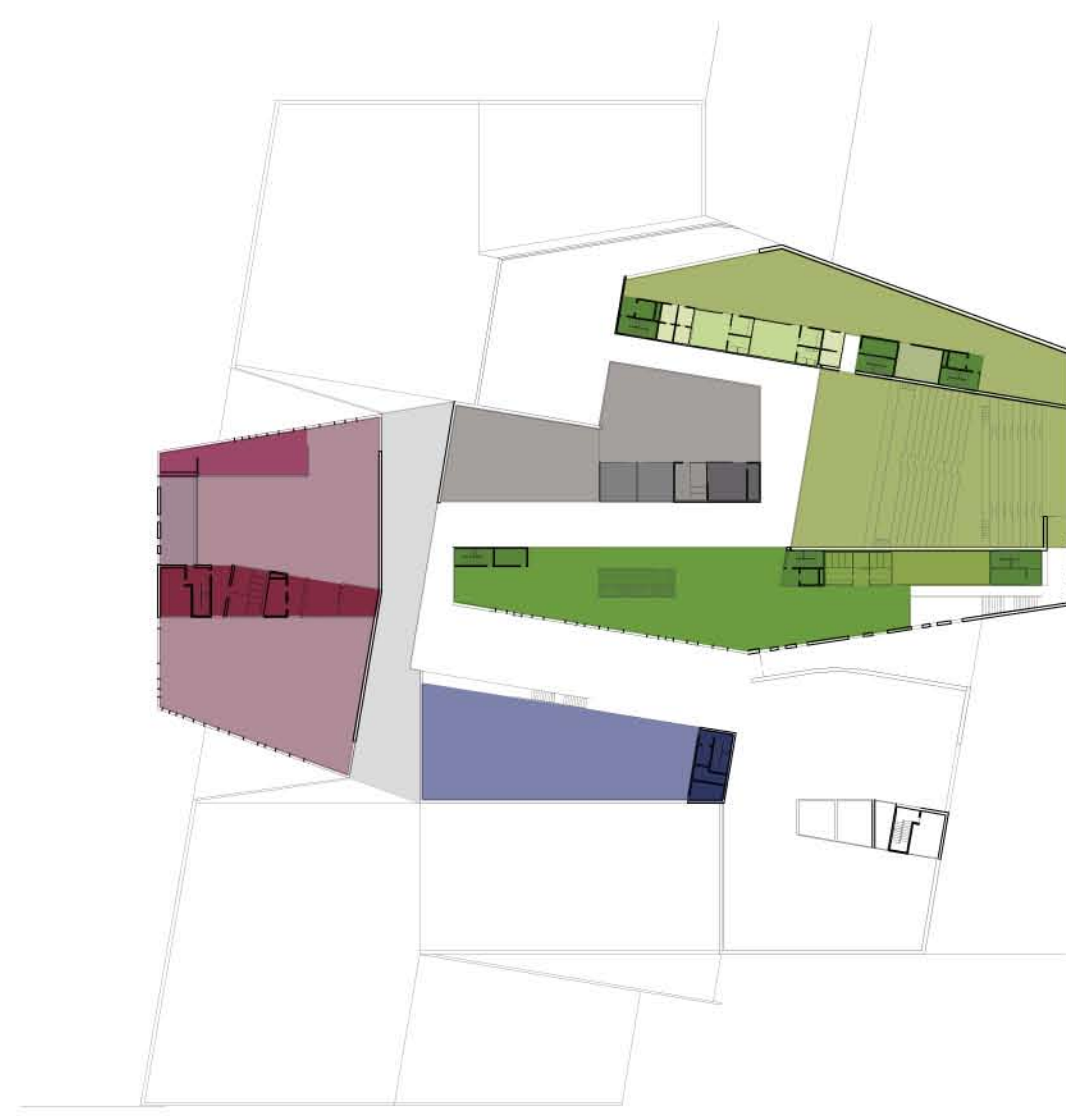


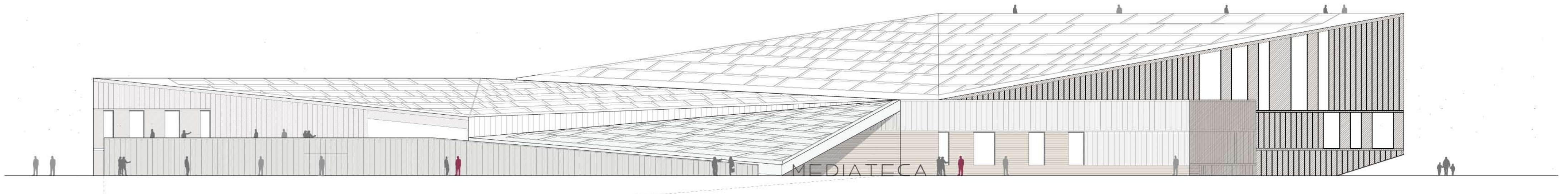
PLANTA BAIXA, COTA 0.00m
SUPERFICIE PB 9725 m²
SUPERFICIE TOTAL 15720 m²



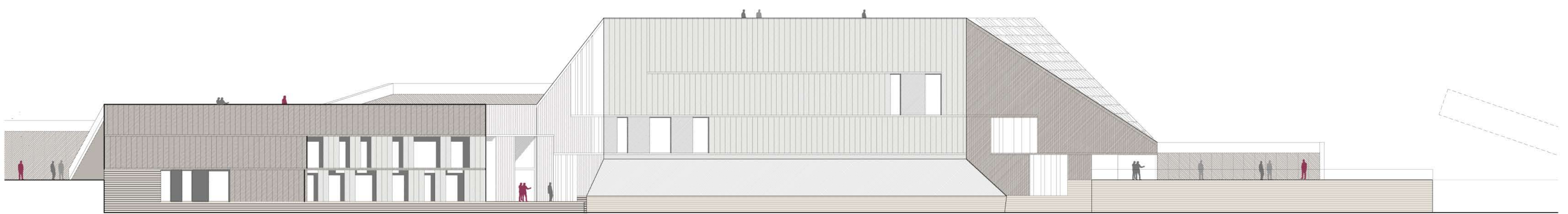
PLANTA PRIMERA, COTA 4.00m
SUPERFICIE P1 4865 m²



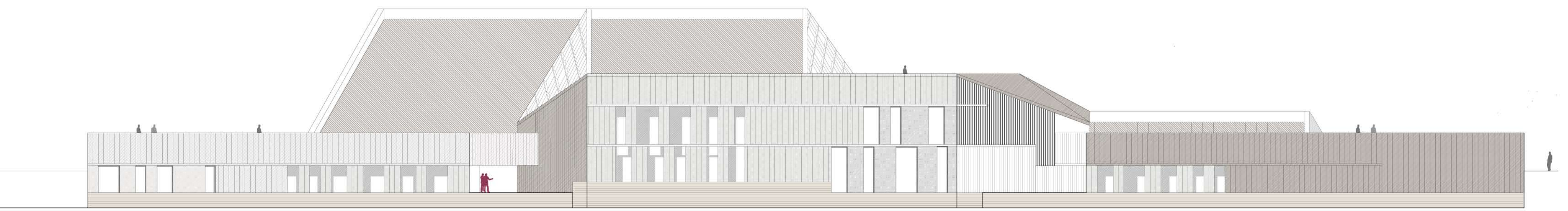
PLANTA SEGONA, COTA 8.00m
SUPERFICIE P2 1130 m²



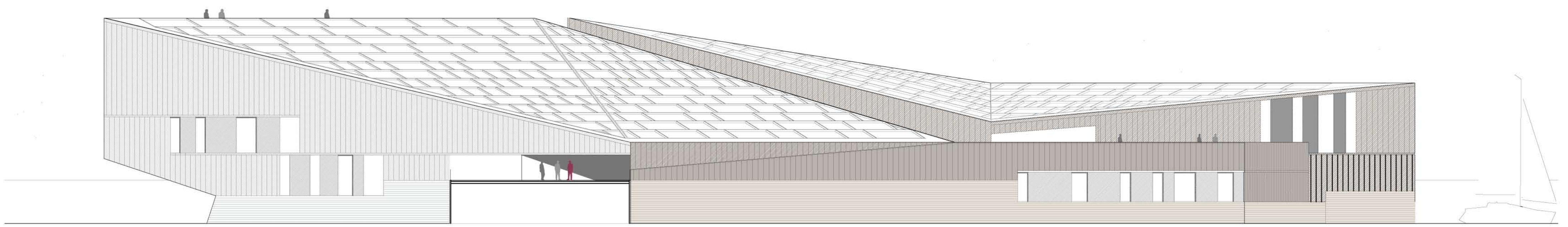
ALÇAT SUD
0 2 12 1/250



ALÇAT EST
0 2 12 1/250



ALÇAT OEST
0 2 12 1/250



ALÇAT NORD
0 2 12 1/250

