

Appendix H – Summary

PSFC-01-0000 _____ ECR Ion Source

Central elements

PSFC-01-1001	Central support
PSFC-01-1002	Quartz tube
PSFC-01-1003	BN disk
PSFC-01-1004	Upper shielding
PSFC-01-1005	8" Flange - MDC 110030
PSFC-01-1006	Dowel
PSFC-01-1100 _____	Lower support
PSFC-01-1101	Lower coil's base
PSFC-01-1102	Lower coil's shielding
PSFC-01-1200 _____	Upper support
PSFC-01-1201	Upper coil's base
PSFC-01-1202	Upper coil's shielding

Microwave system

PSFC-01-2100 _____	Microwave window
PSFC-01-2200 _____	Waveguide system
PSFC-01-2201_A	Rectangular waveguide A
PSFC-01-2201_B	Rectangular waveguide B
PSFC-01-2202	G10 sandwich
PSFC-01-2203	Fixing ring A
PSFC-01-2204	Fixing ring B
PSFC-01-2205	Kapton film
PSFC-01-2206	Microwave dowel 6mm
PSFC-01-2207	Microwave dowel 10mm

Electrodes

PSFC-01-3001	Extraction electrode
PSFC-01-3002	Ground electrode
PSFC-01-3003	Suppressor electrode
PSFC-01-3004	Ground electrode's support
PSFC-01-3005	Grid

Coil

PSFC-01-4101	Upper coil
PSFC-01-4201	Lower coil

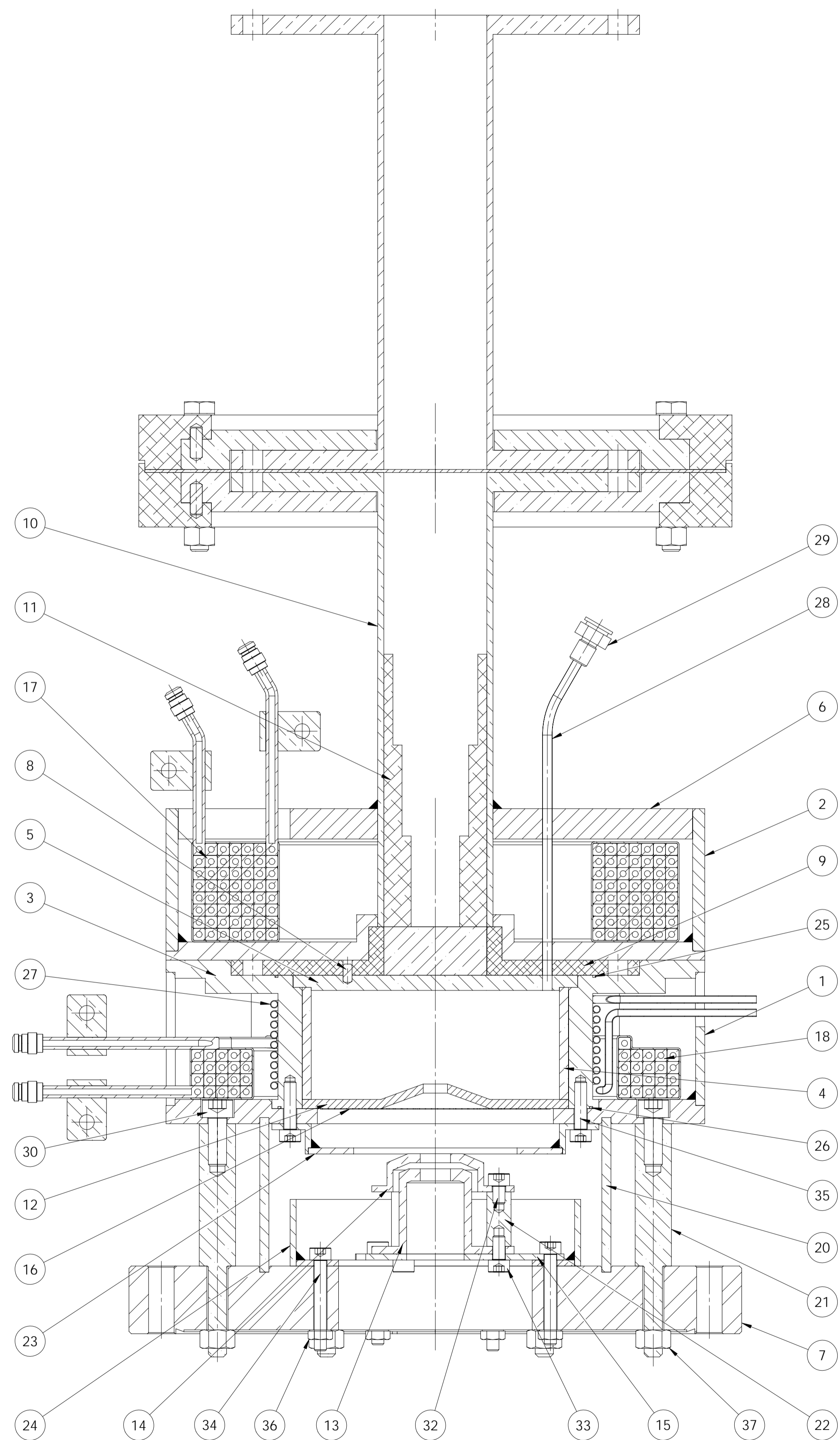
Electrical insulation

PSFC-01-5001	High voltage isolator
PSFC-01-5002	Supporting pins
PSFC-01-5003	Medium voltage isolator

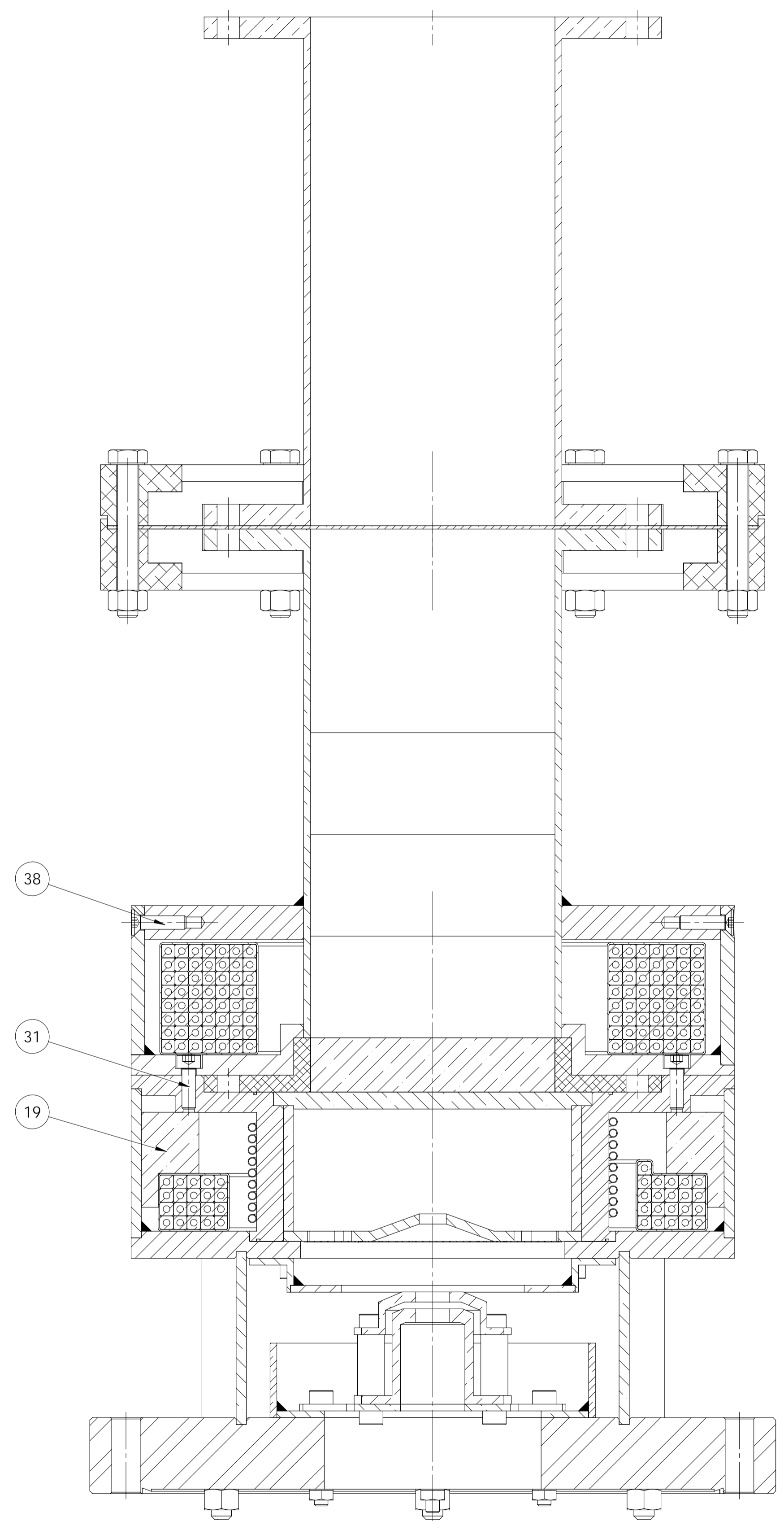
Shields

PSFC-01-6100 _____	Small shield
PSFC-01-6101	Small shield's base
PSFC-01-6102	Small shield's ring
PSFC-01-6200 _____	Large shield
PSFC-01-6201	Large shield's base
PSFC-01-6202	Large shield's cylinder

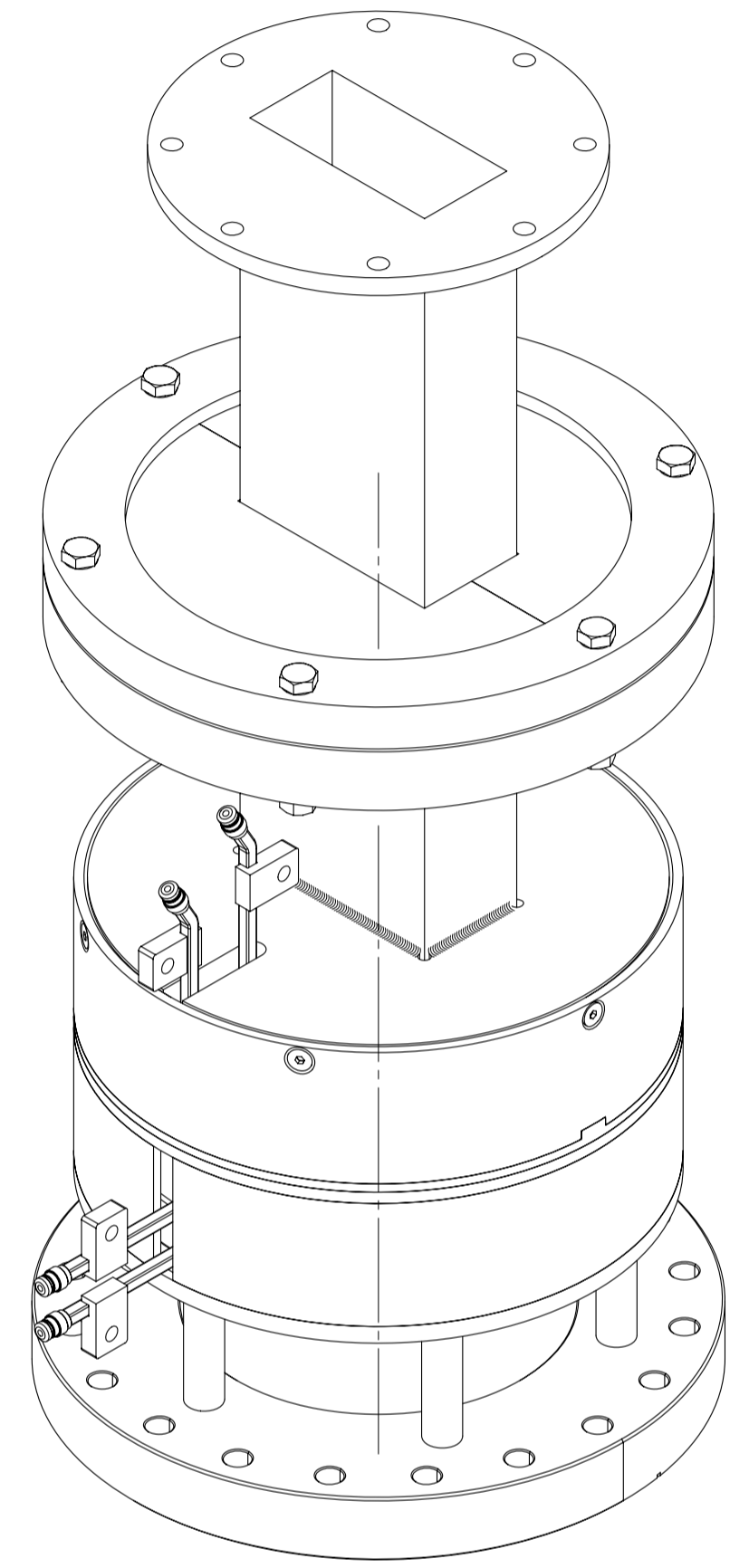
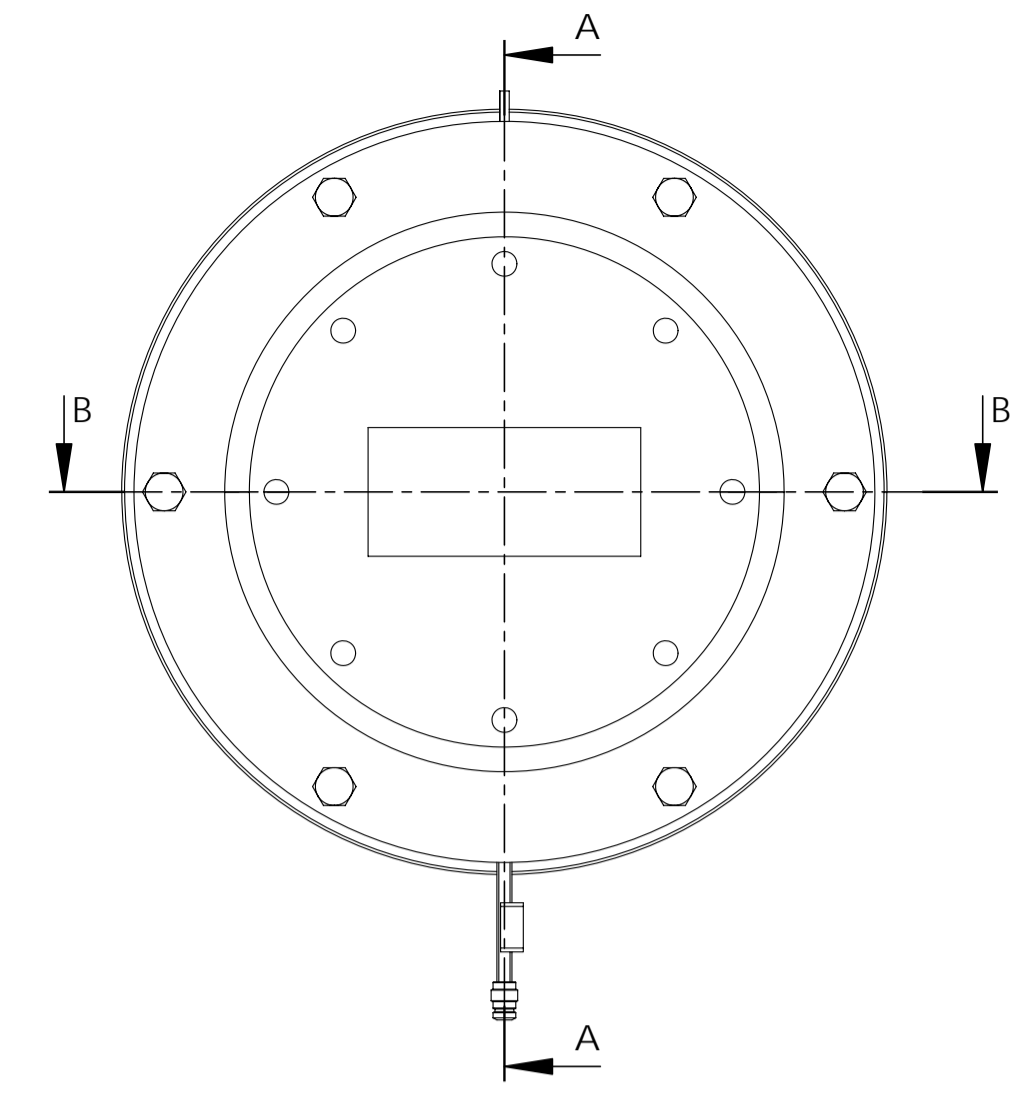




SECTION A-A
SCALE 1 : 1




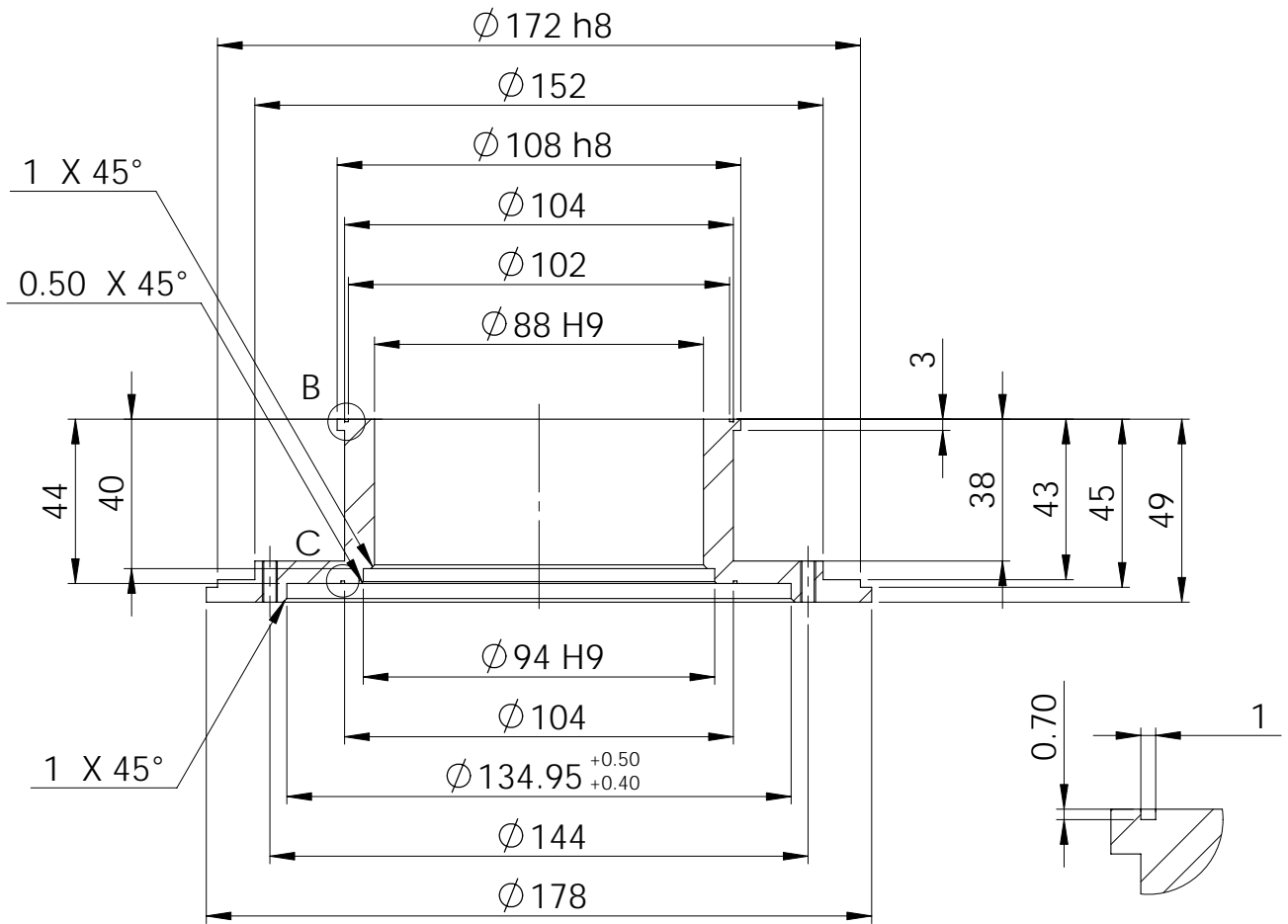
SECTION B-B
SCALE 1 : 1



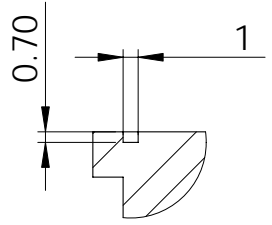
ITEM NO.	PART NUMBER	QTY.
30	ISO 4762 M6 x 16 --- 16N	6
31	ISO 4762 M4 x 12 --- 12N	6
32	ISO 4762 M4 x 6 --- 6N	3
33	ISO 4762 M4 x 8 --- 8N	3
34	ISO 4762 M4 x 30 --- 30N	6
35	ISO 4762 M4 x 16 --- 16N	6
36	Hexagon Nut ISO - 4032 - M4 - W - N	6
37	Hexagon Nut ISO - 4034 - M6 - N	6
38	ISO 10642 - M4 x 16 --- 16N	6

ITEM NO.	PART NUMBER	DESCRIPTION	QTY.
1	PSFC-01-1100	Lower support	1
2	PSFC-01-1200	Upper support	1
3	PSFC-01-1001	Central support	1
4	PSFC-01-1002	Quartz tube	1
5	PSFC-01-1003	BN disk	1
6	PSFC-01-1004	Upper shielding	1
7	PSFC-01-1005	8" Flange - MDC 110030	1
8	PSFC-01-1006	Dowel	1
9	PSFC-01-2100	Microwave window	1
10	PSFC-01-2200	Waveguide system	1
11	PSFC-01-2001	Impedance matching element	2
12	PSFC-01-3001	Extraction electrode	1
13	PSFC-01-3002	Ground electrode	1
14	PSFC-01-3003	Suppressor electrode	1
15	PSFC-01-3004	Ground electrode support	1
16	PSFC-01-3005	Grid	1
17	PSFC-01-4100	Upper coil system	1
18	PSFC-01-4200	Lower coil system	1
19	PSFC-01-4203	Coil positioner	2
20	PSFC-01-5001	High voltage isolator	1
21	PSFC-01-5002	Supporting pins	6
22	PSFC-01-5003	Medium voltage isolator	3
23	PSFC-01-6100	Small protector	1
24	PSFC-01-6200	Large protector	1
25	PSFC-01-7001	Vacuum gasket A	1
26	PSFC-01-7002	Vacuum gasket B	1
27	PSFC-01-8001	Cooling system	1
28	PSFC-01-8002	Gas inlet tube	1

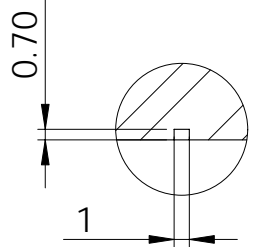
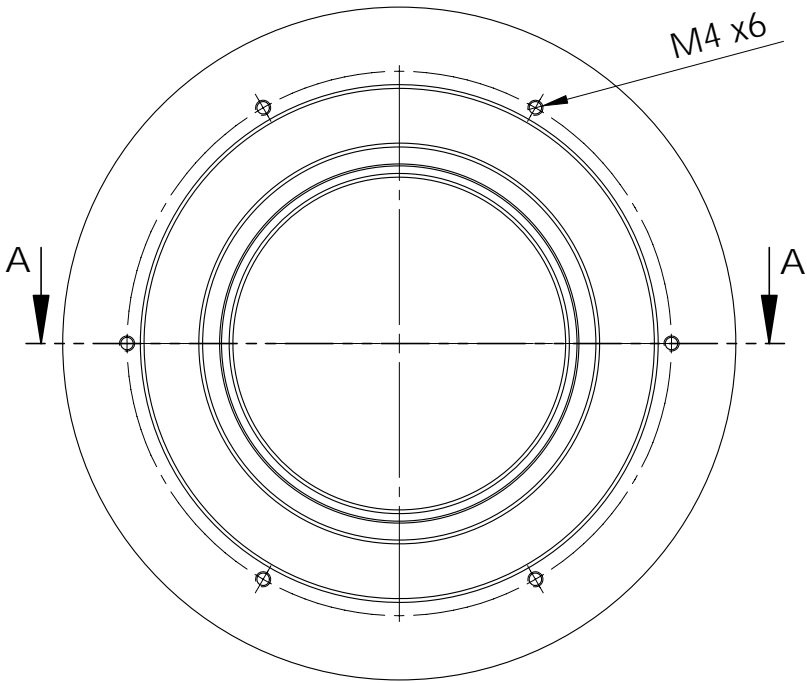

TITLE: ECR Ion Source
 GENERAL DIMENSIONAL TOLERANCES: ISO 2768 Medium
 DRAWN: J.Reig SIZE: A1 DWG. NO.: PSFC-01-0000 QUANT.: 1
 DATE: 29/04/2010 SCALE: 1:1 MATERIAL: FINISH:



SECTION A-A



DETAIL B
SCALE 2 : 1

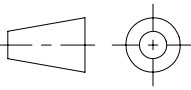


DETAIL C
SCALE 2 : 1



TITLE:
Central support

GENERAL DIMENSIONAL
TOLERANCES:
ISO 2768 Medium



DRAWN
J.Reig
DATE
29/04/2010

SIZE
A4

DWG. NO.

PSFC-01-1001

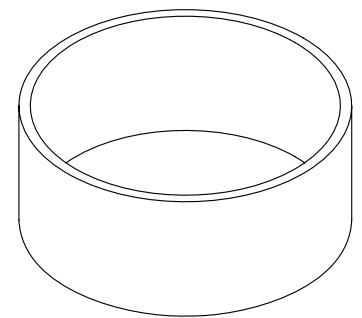
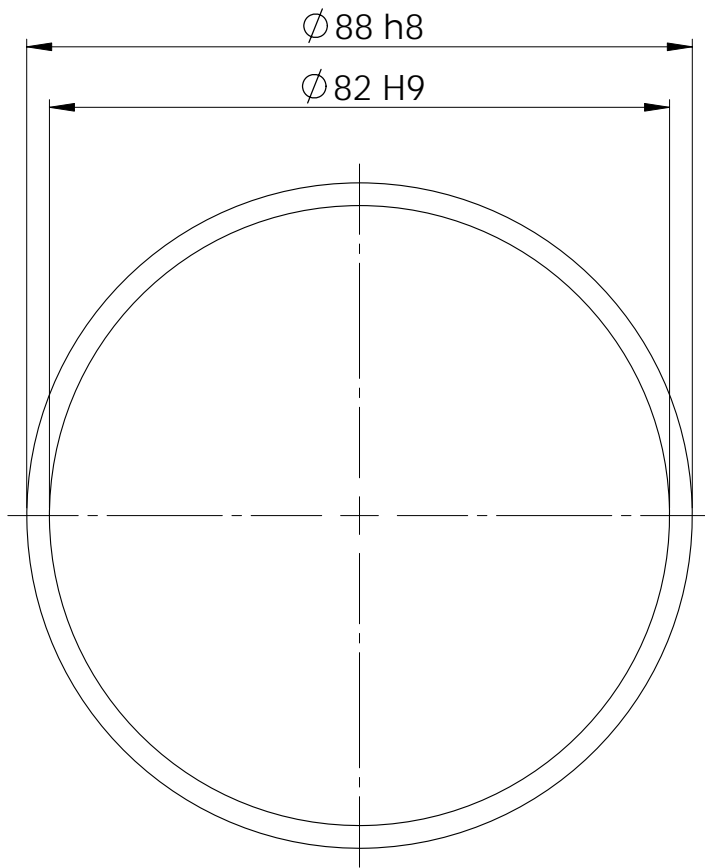
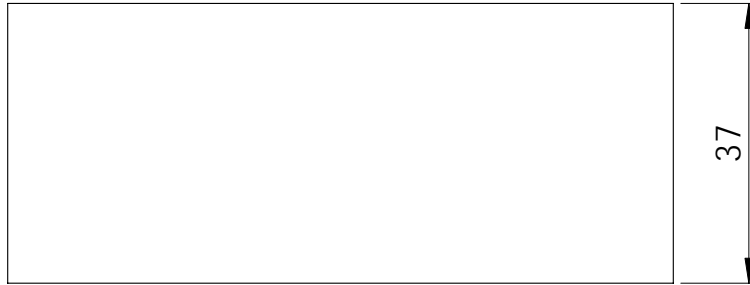
QUANT. **1**

SCALE: **1:2**

MATERIAL
AISI 316L

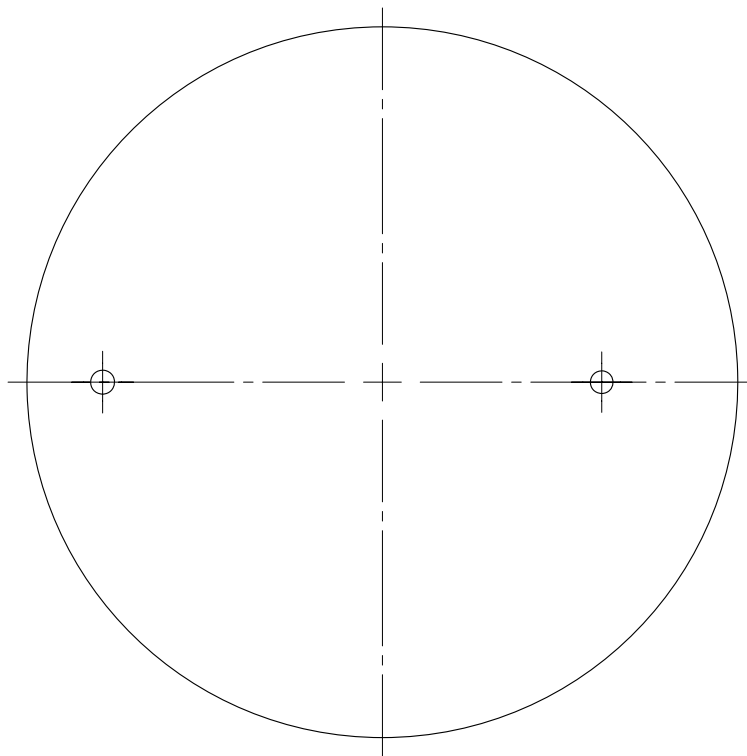
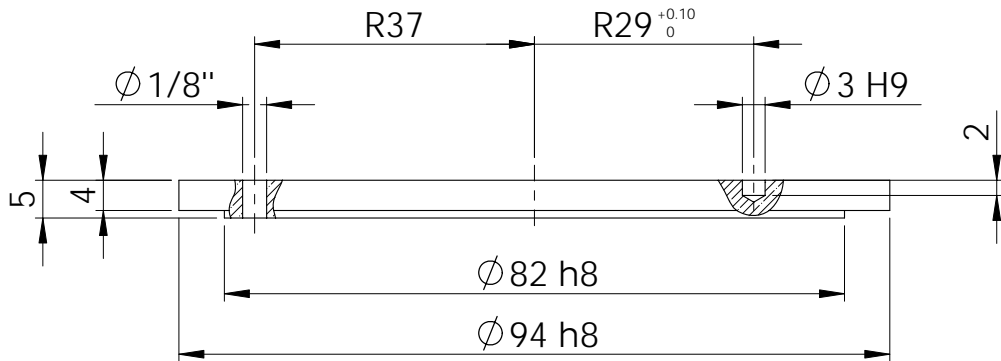
FINISH

-



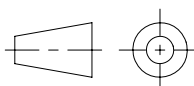
Isometric view
Scale 1:2

		TITLE:			
		Quartz tube			GENERAL DIMENSIONAL TOLERANCES: ISO 2768 Medium
	DRAWN J.Reig	SIZE A4	DWG. NO.	PSFC-01-1002	QUANT. 1
	DATE 12/04/2010	SCALE: 1:1	MATERIAL Quartz	FINISH -	



TITLE:
BN disk

GENERAL DIMENSIONAL
TOLERANCES:
ISO 2768 Medium



DRAWN
J.Reig

SIZE
A4

DWG. NO.

PSFC-01-1003

QUANT. **1**

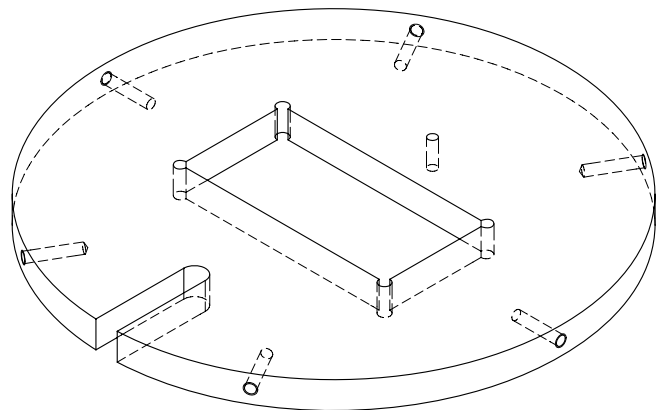
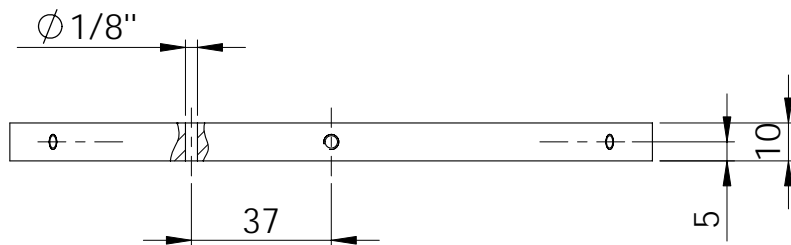
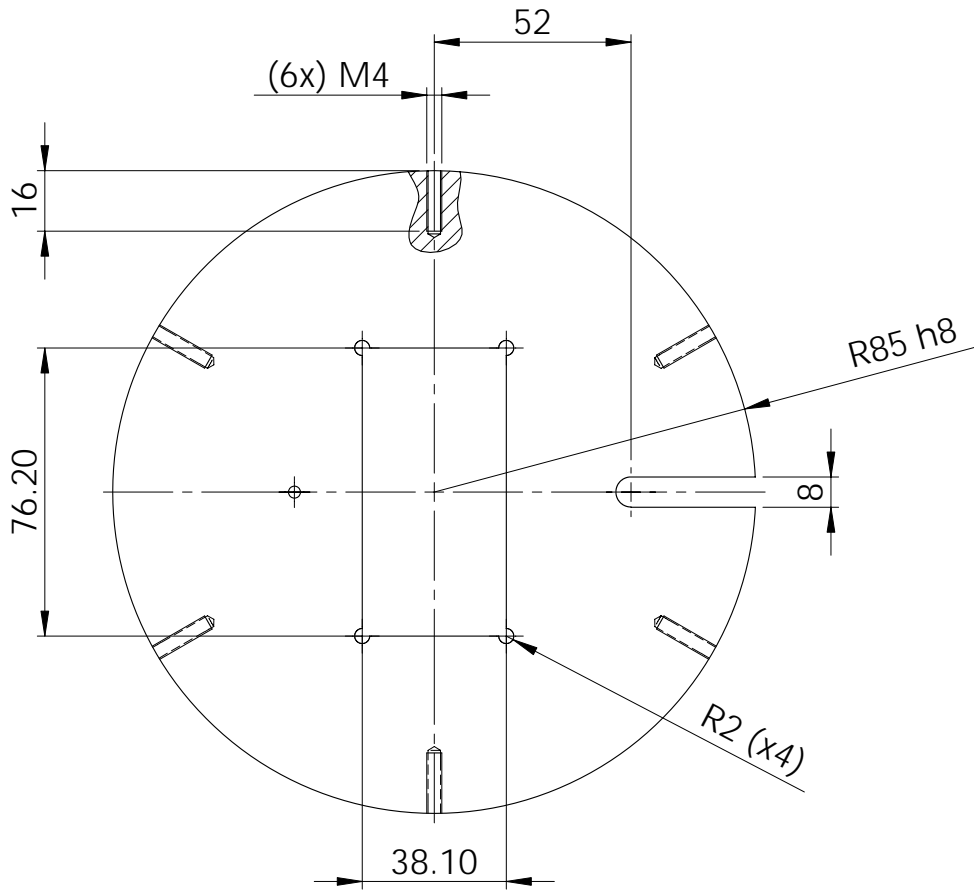
DATE
12/04/2010

SCALE: **1:1**

MATERIAL
Boron Nitride

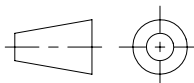
FINISH

-



TITLE:
Upper shielding

GENERAL DIMENSIONAL
TOLERANCES:
ISO 2768 Medium



DRAWN
J.Reig

SIZE
A4

DWG. NO.

PSFC-01-1004

QUANT. 1

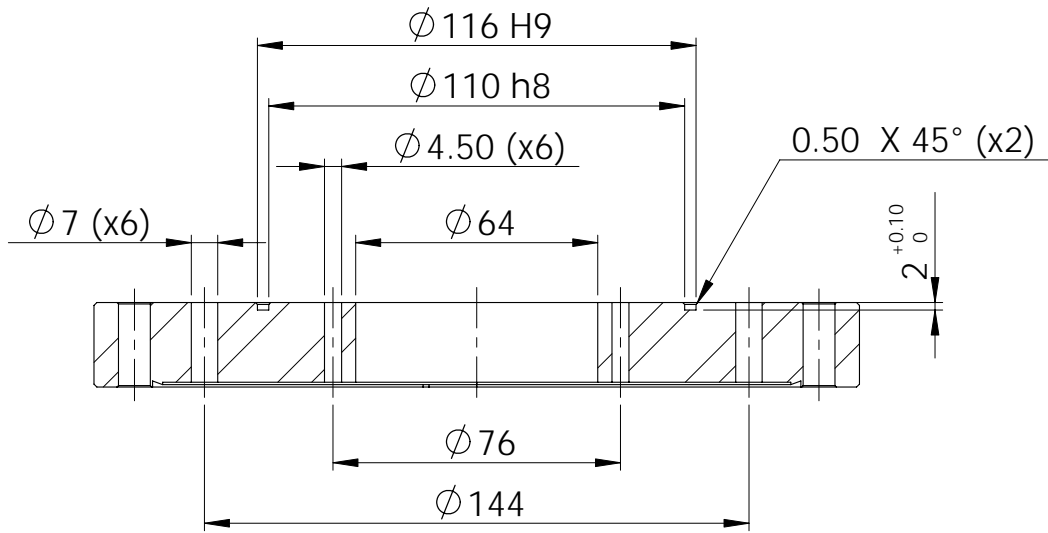
DATE
29/04/2010

SCALE: 1:2

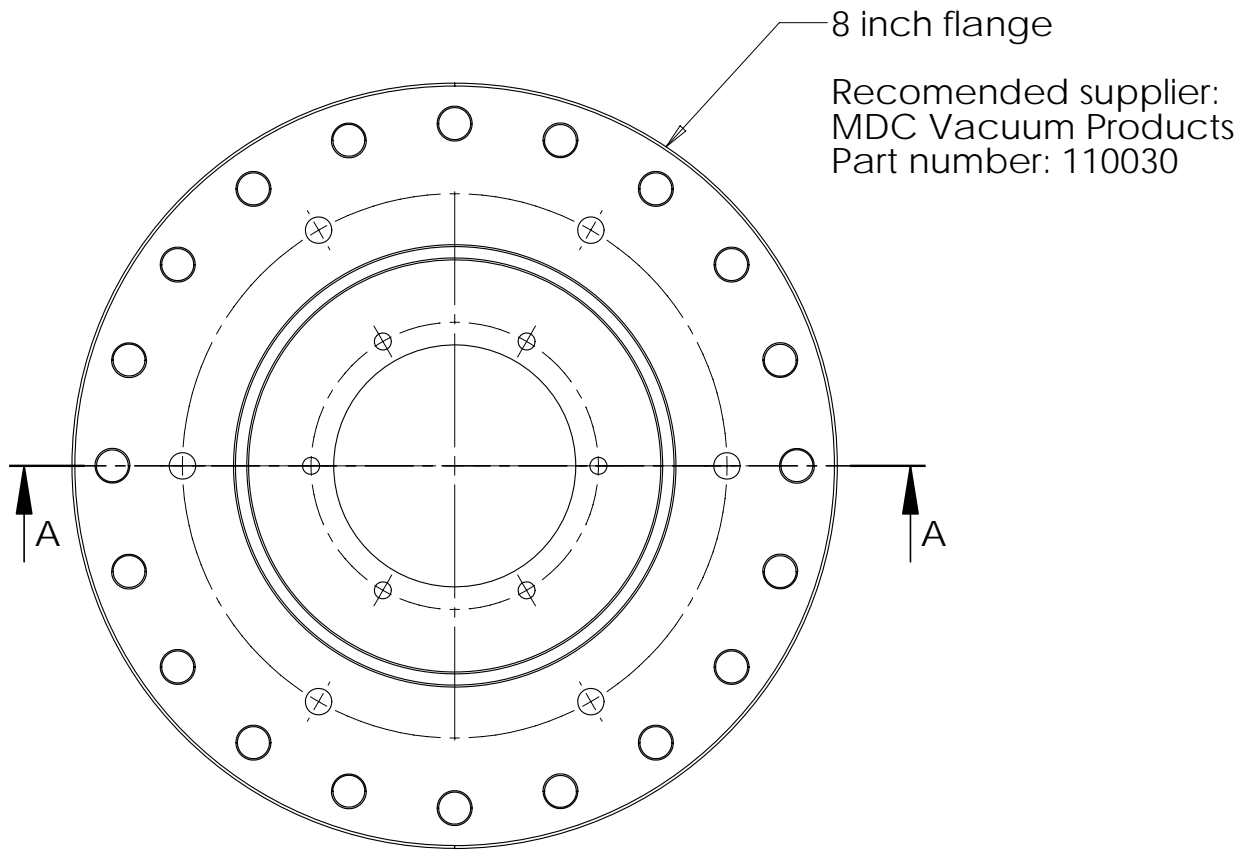
MATERIAL
AISI 1020

FINISH

-

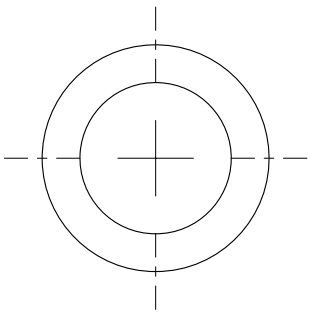
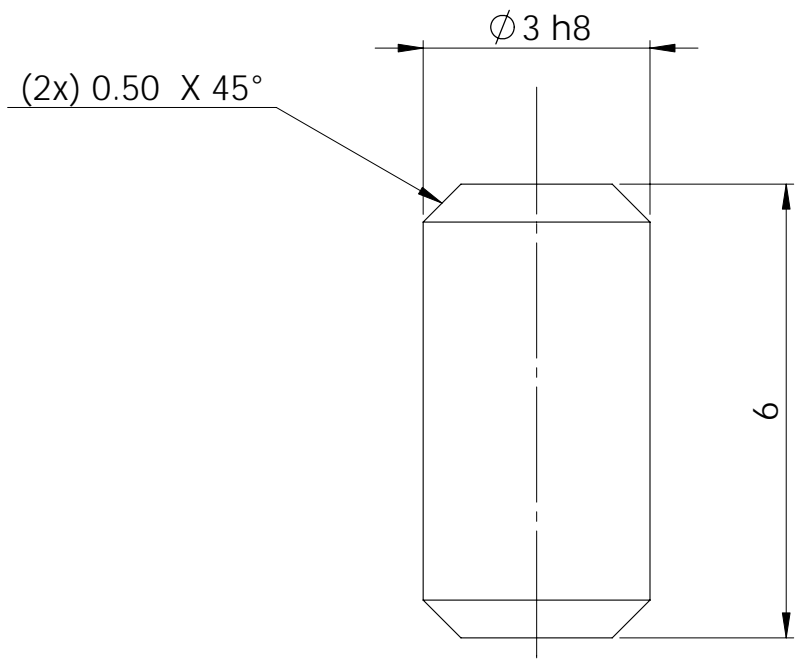


SECTION A-A

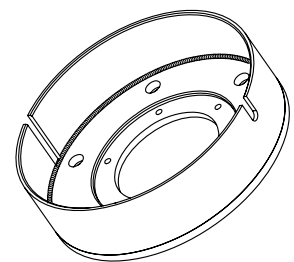
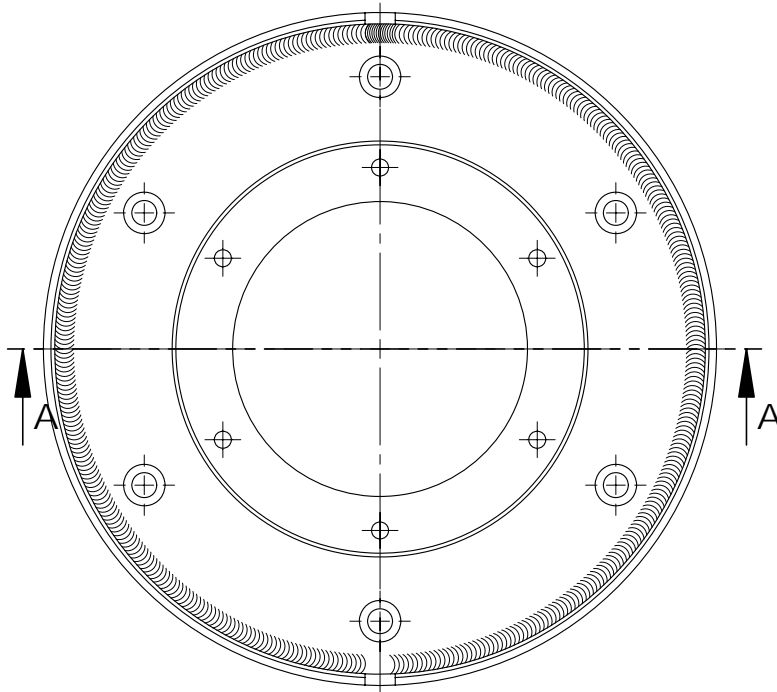
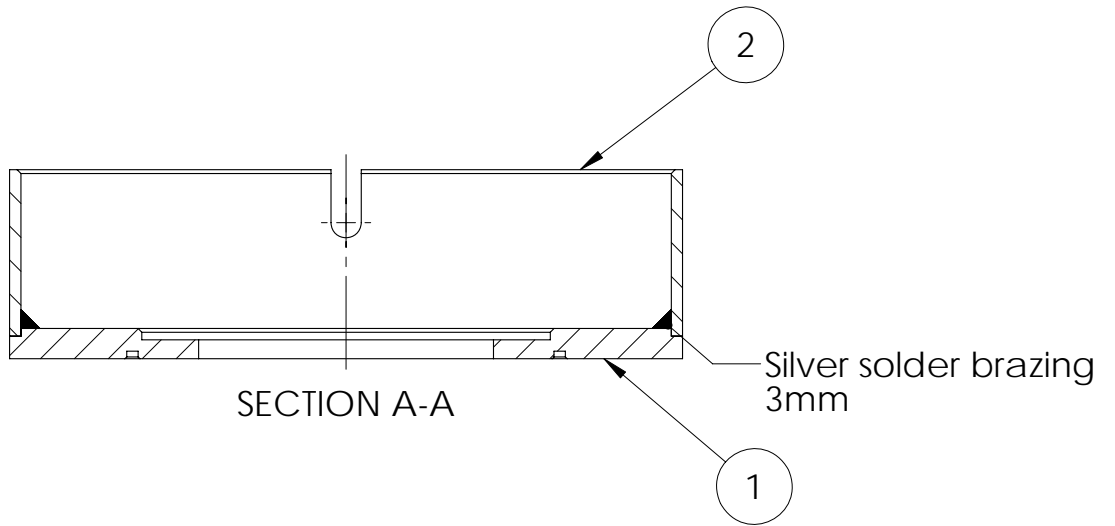


Note: The entire geometry of the flange is not included in this drawing. Only the added machining features to those already integrated in MDC 110030 are detailed here.

		TITLE:			GENERAL DIMENSIONAL TOLERANCES: ISO 2768 Medium	
		8" Flange - MDC 110030				
	DRAWN	SIZE	DWG. NO.	PSFC-01-1005	QUANT.	1
	J.Reig	A4				
DATE	SCALE:	1:2	MATERIAL	304 SS	FINISH	-
29/04/2010						



		TITLE:			
		Dowel			GENERAL DIMENSIONAL TOLERANCES: ISO 2768 Medium
	DRAWN	SIZE	DWG. NO.	PSFC-01-1006	QUANT. 2
	J.Reig	A4			
DATE	SCALE:	MATERIAL	FINISH		
29/04/2010	10:1	AISI 1020	-		



Isometric view
Scale 1:5

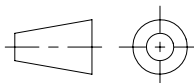
ITEM NO.	PART NUMBER	DESCRIPTION	QTY.
1	PSFC-01-1101	Lower coil's base	1
2	PSFC-01-1102	Lower coil's shielding	1



TITLE:

Lower support

GENERAL DIMENSIONAL
TOLERANCES:
ISO 2768 Medium



DRAWN
J.Reig

SIZE
A4

DWG. NO.

PSFC-01-1100

QUANT. 1

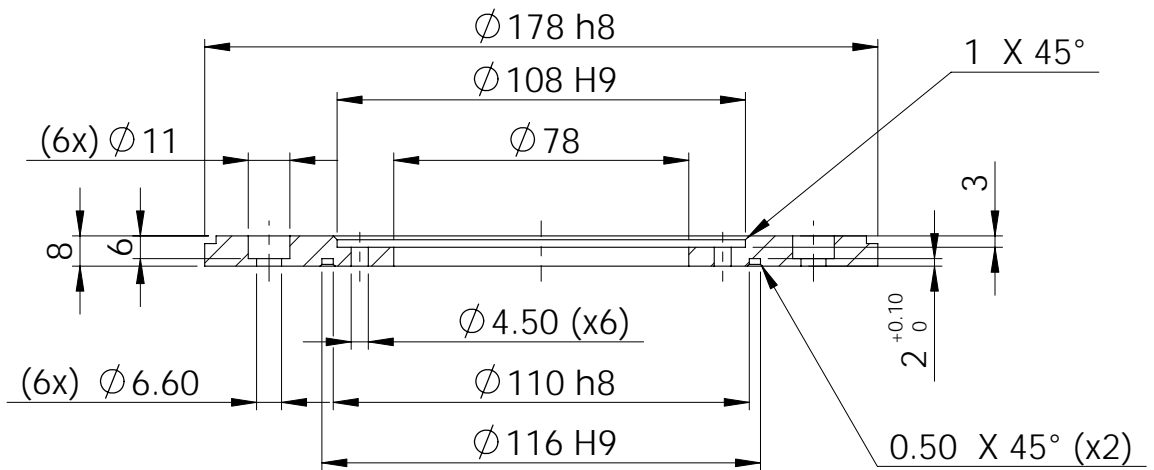
DATE
29/04/2010

SCALE: 1:2

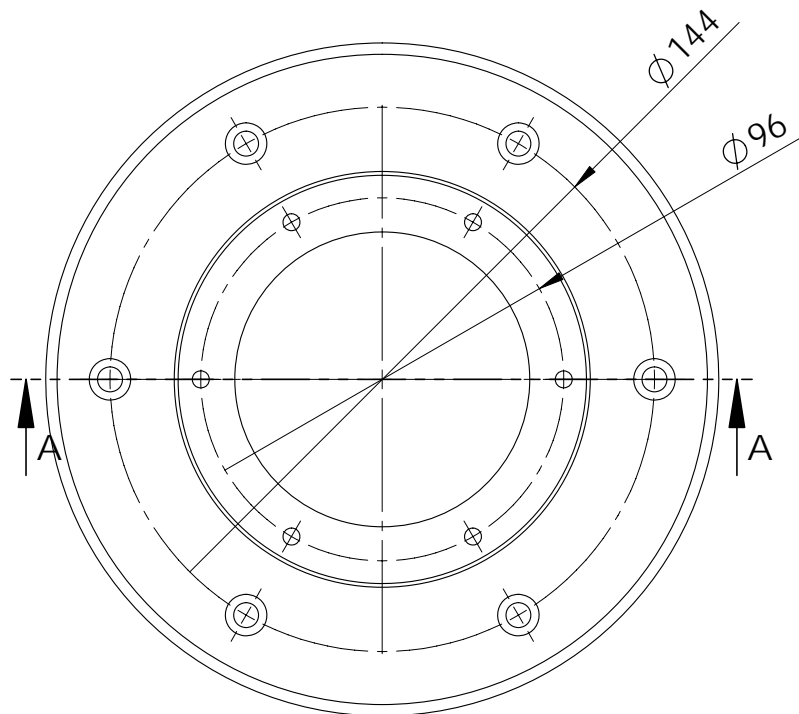
MATERIAL

FINISH

-



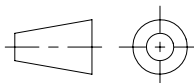
SECTION A-A



TITLE:

Lower coil's base

GENERAL DIMENSIONAL
TOLERANCES:
ISO 2768 Medium



DRAWN
J.Reig

SIZE
A4

DWG. NO.

PSFC-01-1101

QUANT. 1

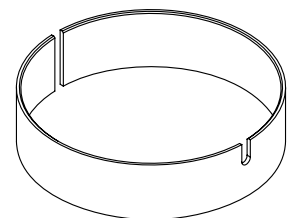
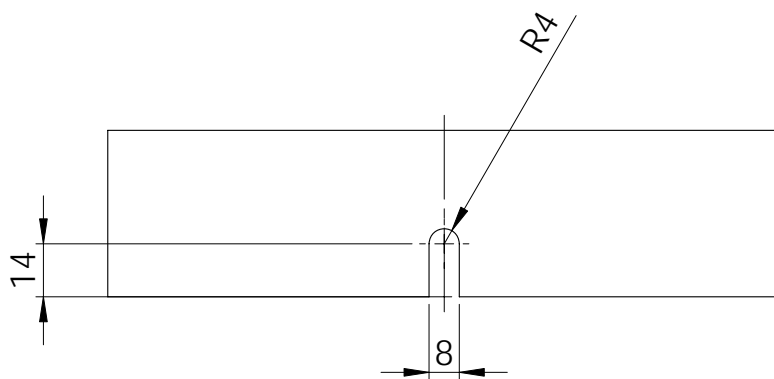
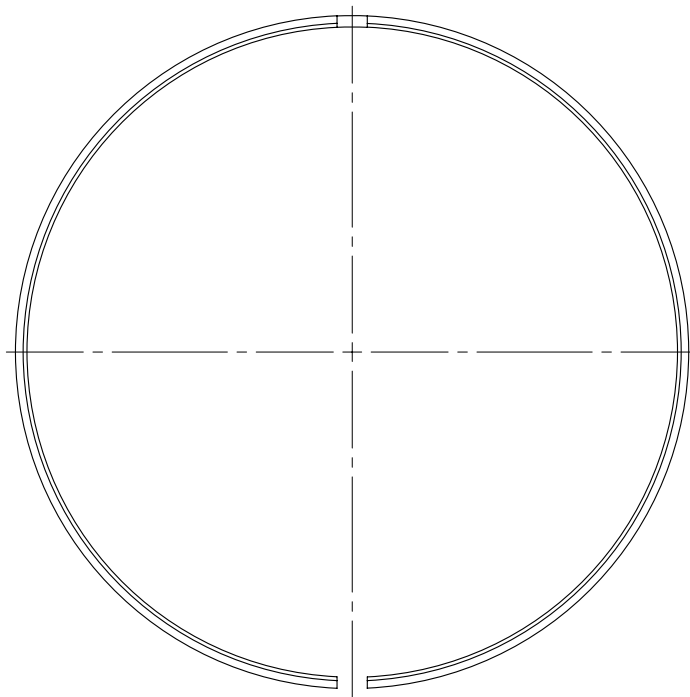
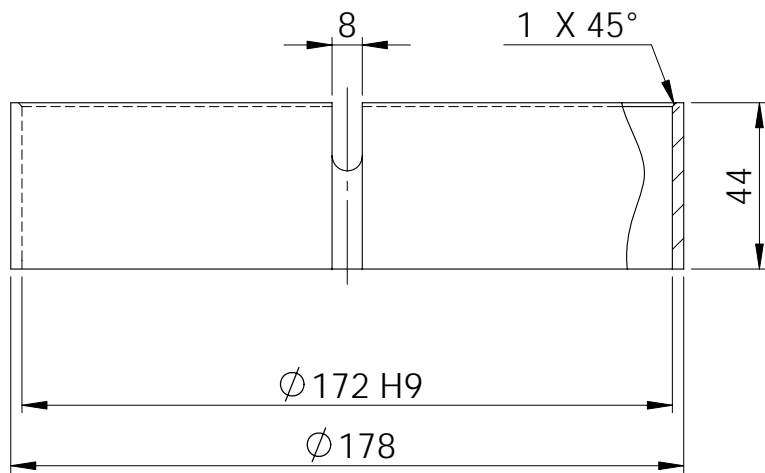
DATE
29/04/2010

SCALE: 1:2

MATERIAL
AISI 1020

FINISH

-

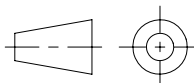


Isometric view
Scale 1:5



TITLE:
Lower coil's shielding

GENERAL DIMENSIONAL
TOLERANCES:
ISO 2768 Medium



DRAWN
J.Reig

SIZE
A4

DWG. NO.

PSFC-01-1102

QUANT. **1**

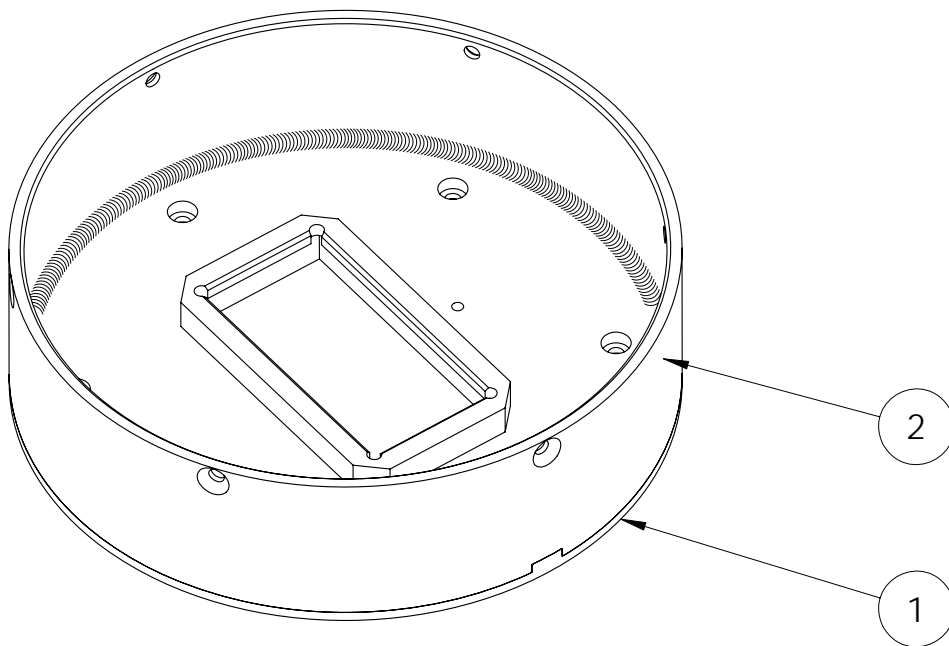
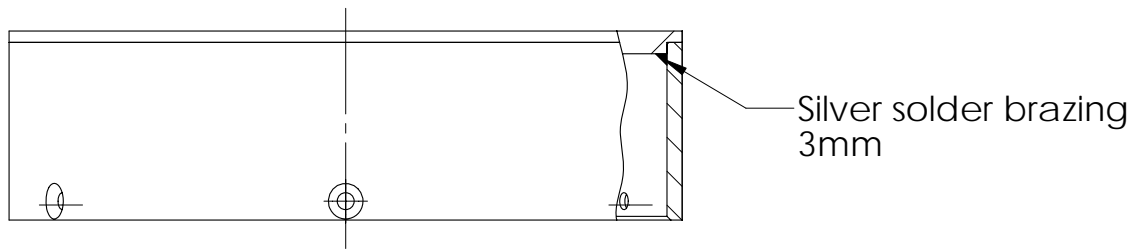
DATE
29/04/2010

SCALE: **1:2**

MATERIAL
AISI 1020

FINISH

-

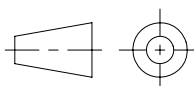


ITEM NO.	PART NUMBER	DESCRIPTION	QTY.
1	PSFC-01-1201	Upper coil's base	1
2	PSFC-01-1202	Upper coil's shielding	1



TITLE:
Upper support

GENERAL DIMENSIONAL
TOLERANCES:
ISO 2768 Medium



DRAWN
J.Reig
DATE
29/04/2010

SIZE
A4

DWG. NO.

PSFC-01-1200

QUANT. **1**

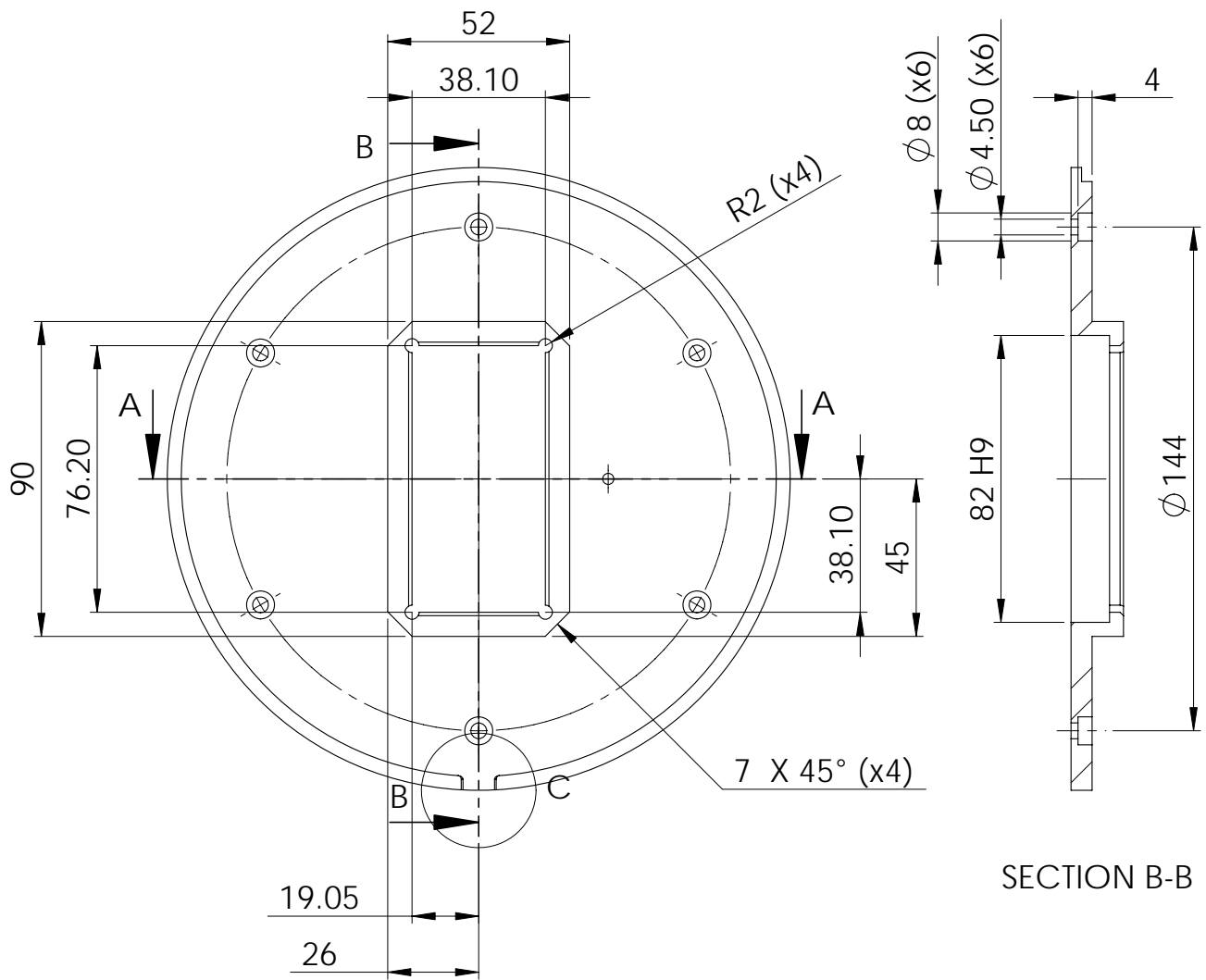
SCALE: **1:2**

MATERIAL

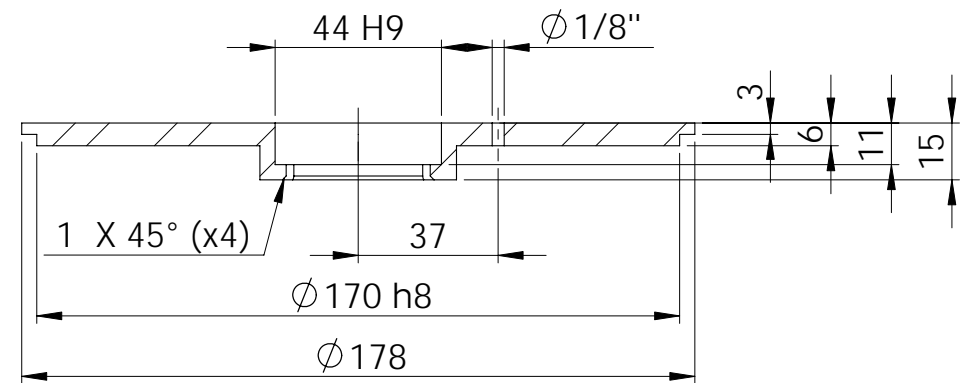
FINISH

-

-

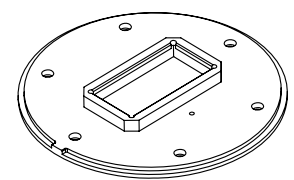
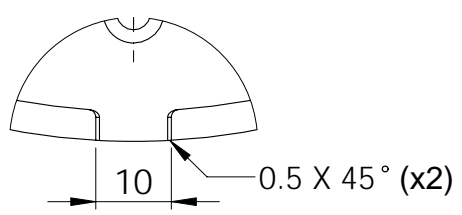


SECTION B-B



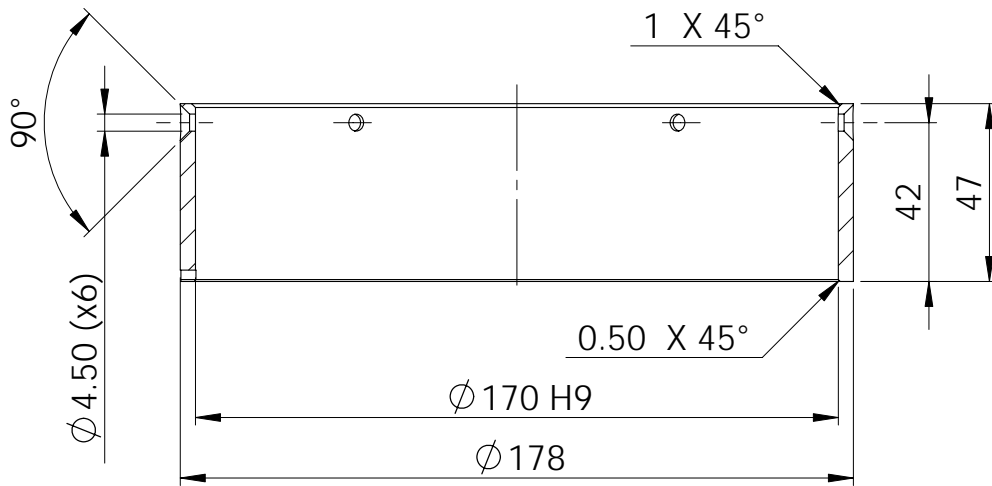
SECTION A-A

DETAIL C
SCALE 1 : 1

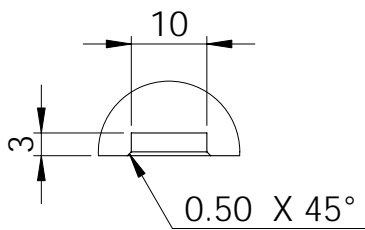
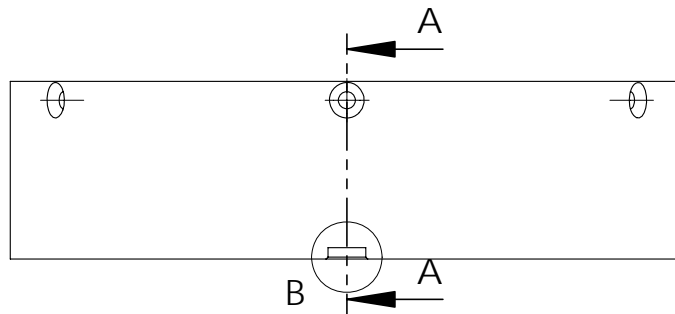


Isometric view
SCALE 1:5

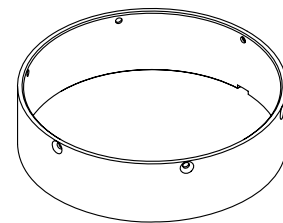
		TITLE: Upper coil's base		GENERAL DIMENSIONAL TOLERANCES: ISO 2768 Medium	
	DRAWN J.Reig	SIZE A4	DWG. NO. PSFC-01-1201	QUANT. 1	
DATE 29/04/2010	SCALE: 1:2	MATERIAL AISI 316L	FINISH -		



SECTION A-A



DETAIL B
SCALE 1 : 1



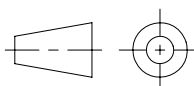
Isometric View
Scale 1:5



TITLE:

Upper coil's shielding

GENERAL DIMENSIONAL
TOLERANCES:
ISO 2768 Medium



DRAWN
J.Reig

SIZE
A4

DWG. NO.

PSFC-01-1202

QUANT. 1

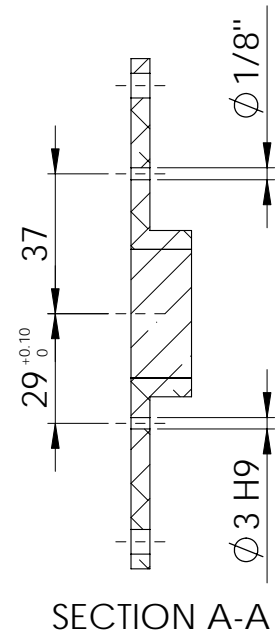
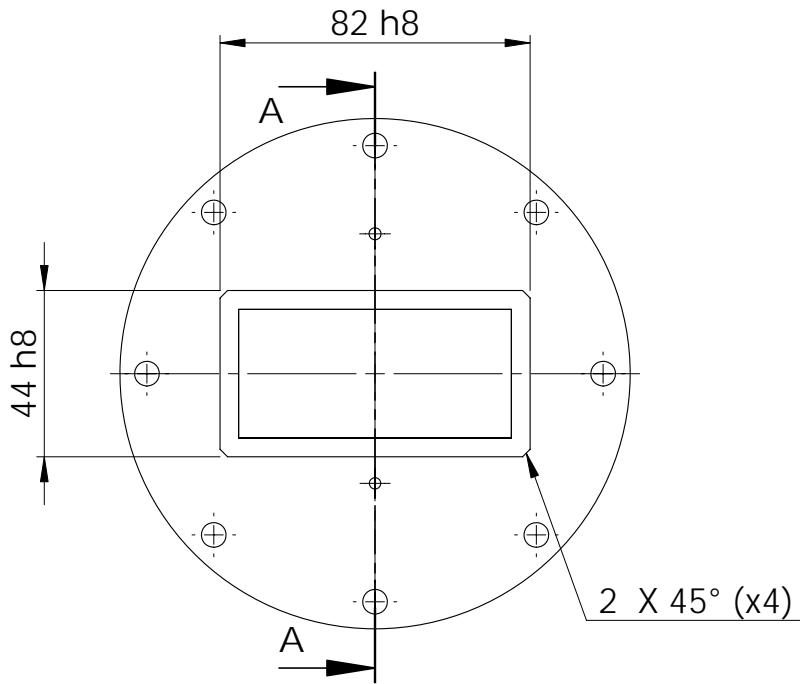
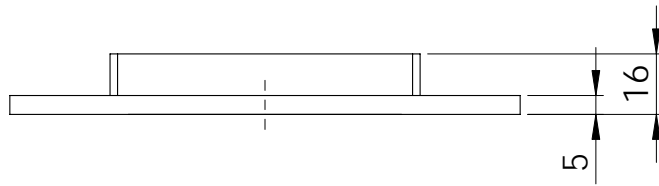
DATE
29/04/2010

SCALE: 1:2

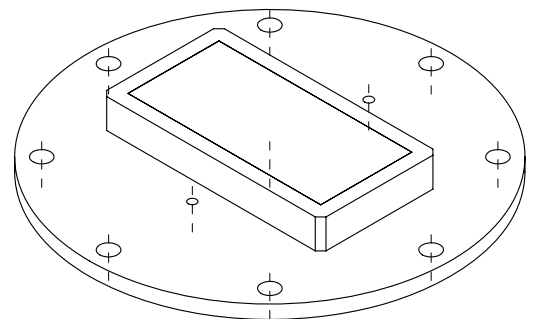
MATERIAL
AISI 1020

FINISH

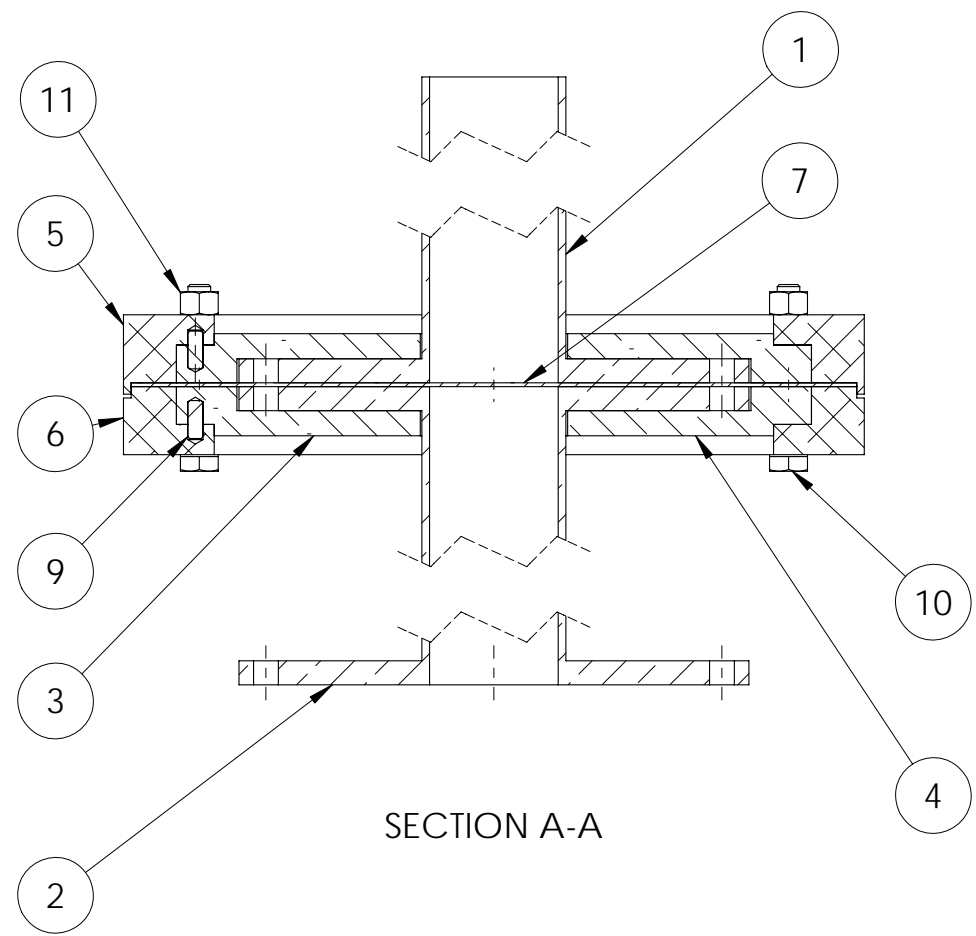
-



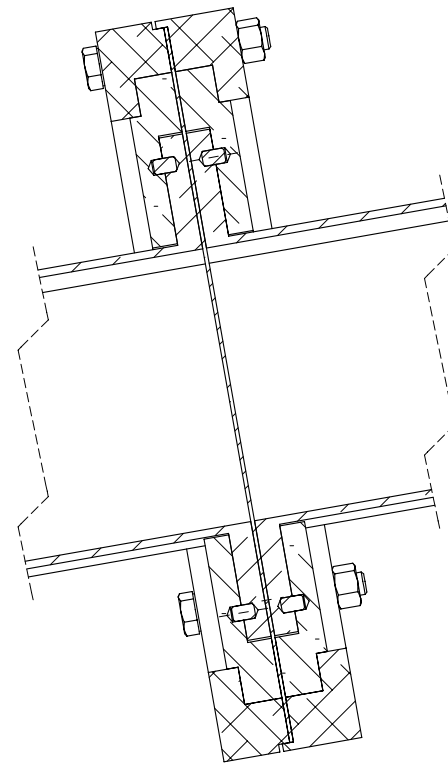
Note: In this drawing only the necessary machining tasks to perform on the microwave window, Model#S270Q, Flange combination UG cover/cover, of Microwave Engineering Corporation are shown.



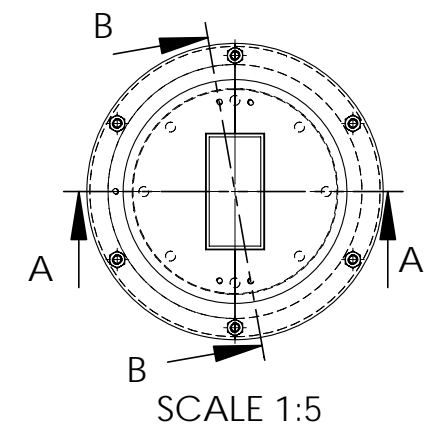
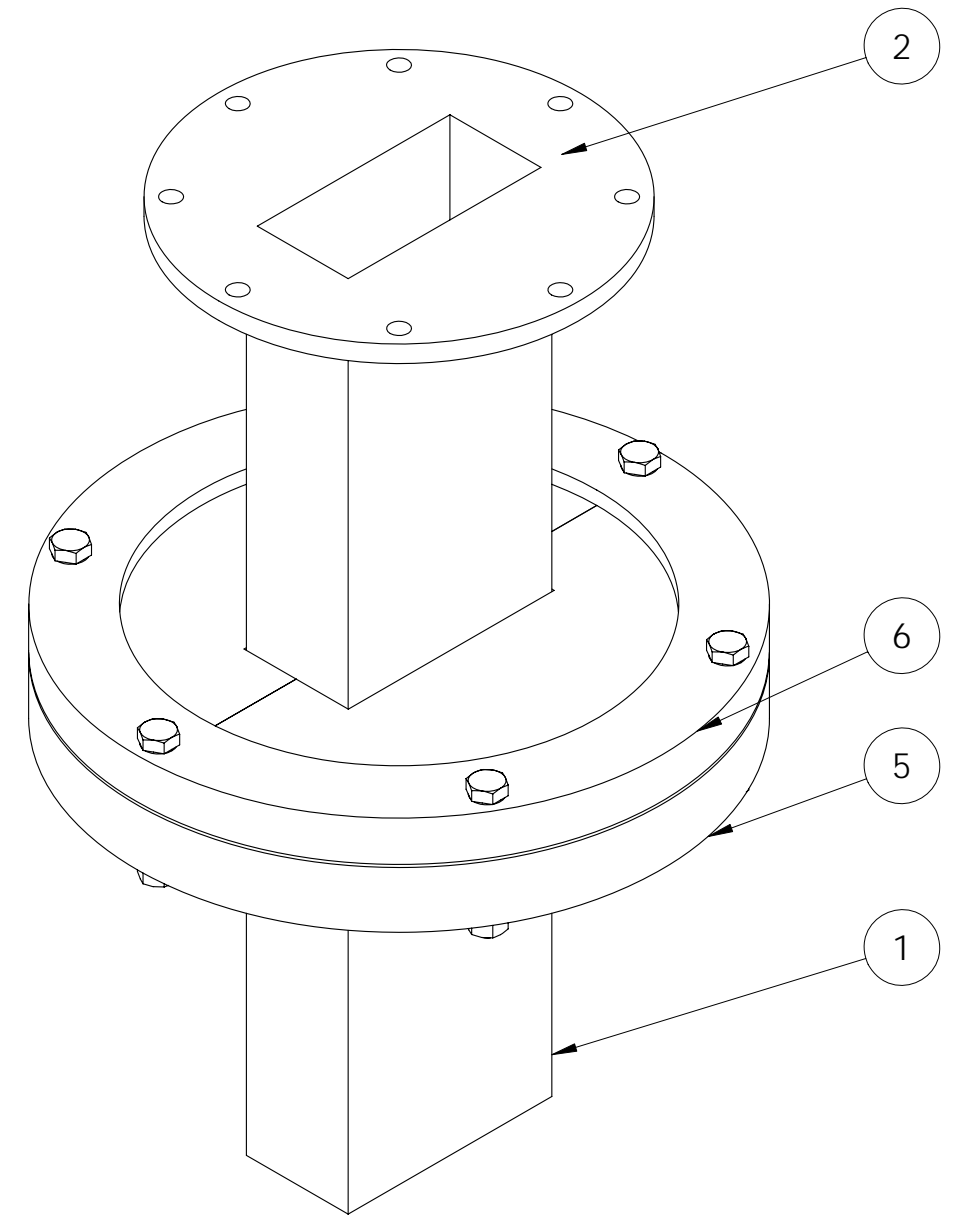
		TITLE:			GENERAL DIMENSIONAL TOLERANCES: ISO 2768 Medium	
		Microwave window				
	DRAWN	SIZE	DWG. NO.	PSFC-01-2100	QUANT.	1
	J.Reig	A4				
DATE	SCALE:	MATERIAL	FINISH			
21/05/2010	1:2	-	-			



SECTION A-A

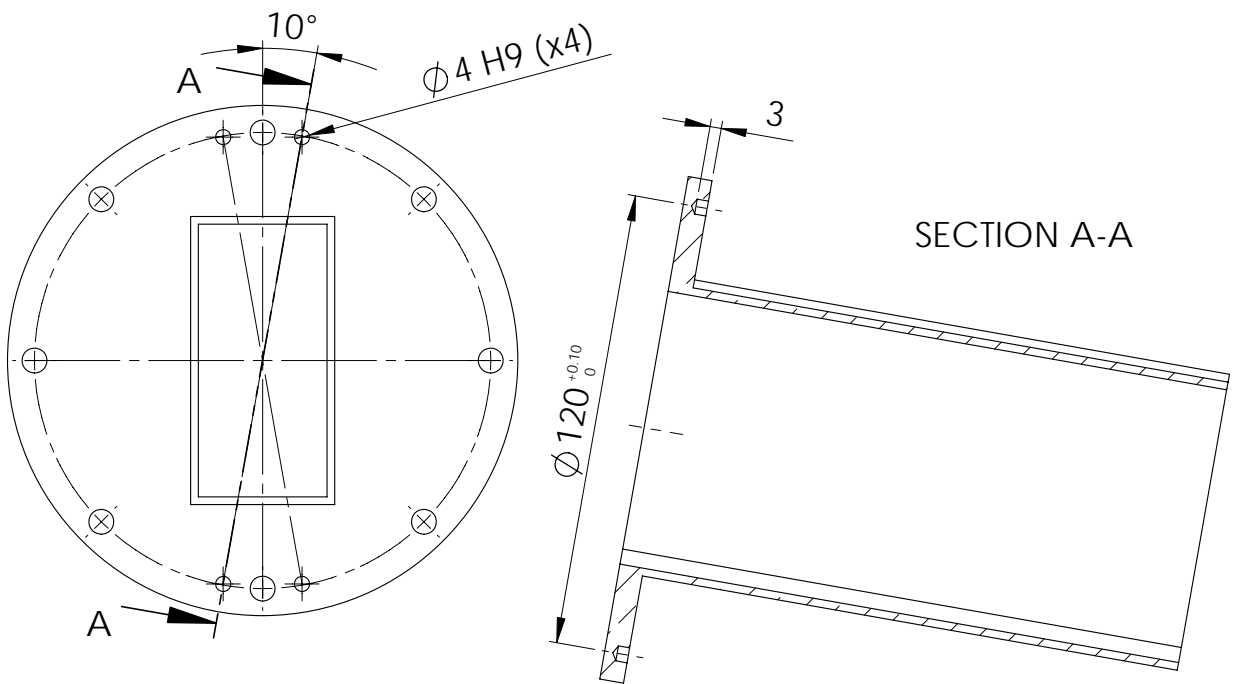
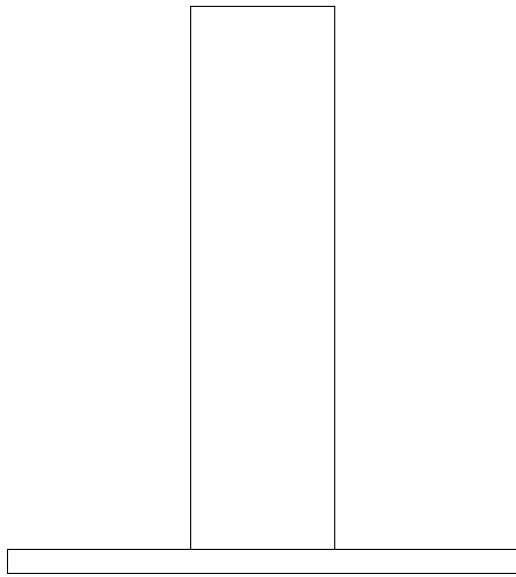


SECTION B-B



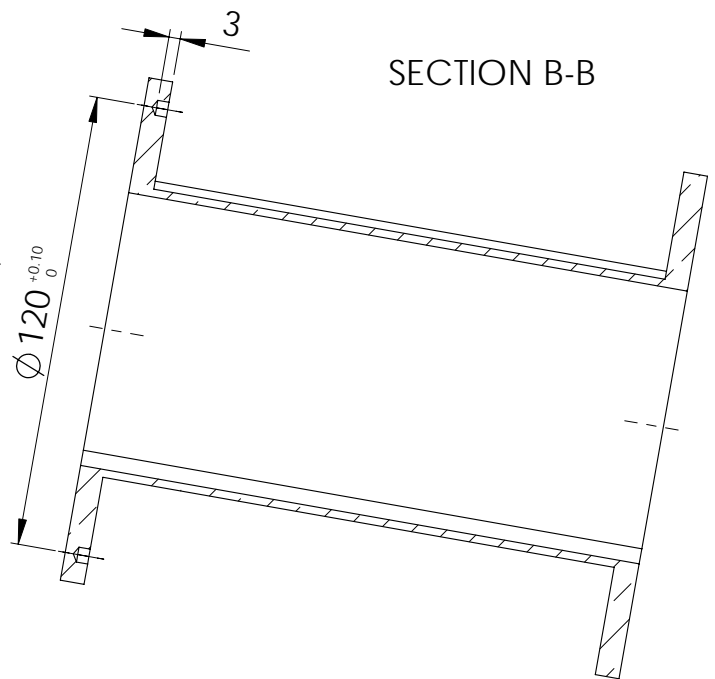
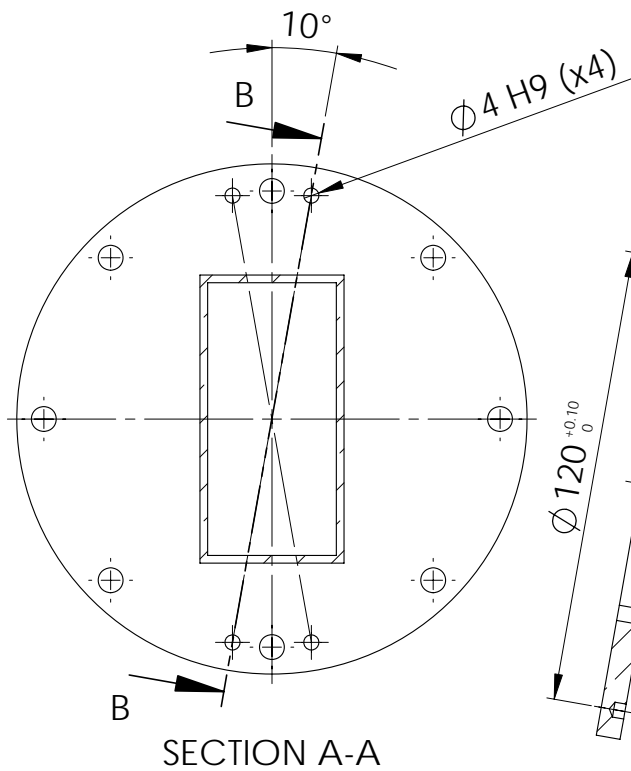
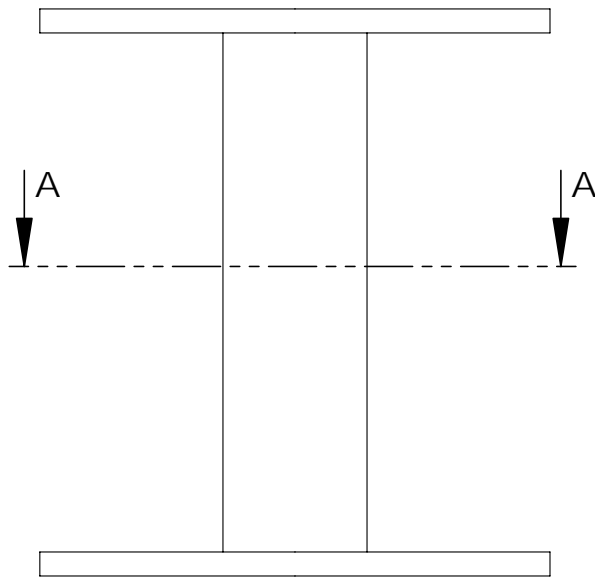
ITEM NO.	PART NUMBER	DESCRIPTION	QTY.
1	PSFC-01-2201_A	Rectangular waveguide A	1
2	PSFC-01-2201_B	Rectangular waveguide B	1
3	PSFC-01-2202_A	G10 Sandwich A	2
4	PSFC-01-2202_B	G10 Sandwich B	2
5	PSFC-01-2203	Fixing ring A	1
6	PSFC-01-2204	Fixing ring B	1
7	PSFC-01-2205	Kapton film	1
8	PSFC-01-2206	Microwave dowel 6mm	8
9	PSFC-01-2207	Microwave dowel 10mm	2
10	ISO 4016 - M6 x 45 x 45	Hexagon bolt M6	6
11	Hexagon Nut ISO - 4032 - M6	Hexagon nut M6	6

	TITLE: Waveguide system		GENERAL DIMENSIONAL TOLERANCES: ISO 2768 Medium		
		DRAWN J.Reig	SIZE A3	DWG. NO. PSFC-01-2200	QUANT. 1
DATE 14/04/2010		SCALE: 1:2	MATERIAL -	FINISH -	



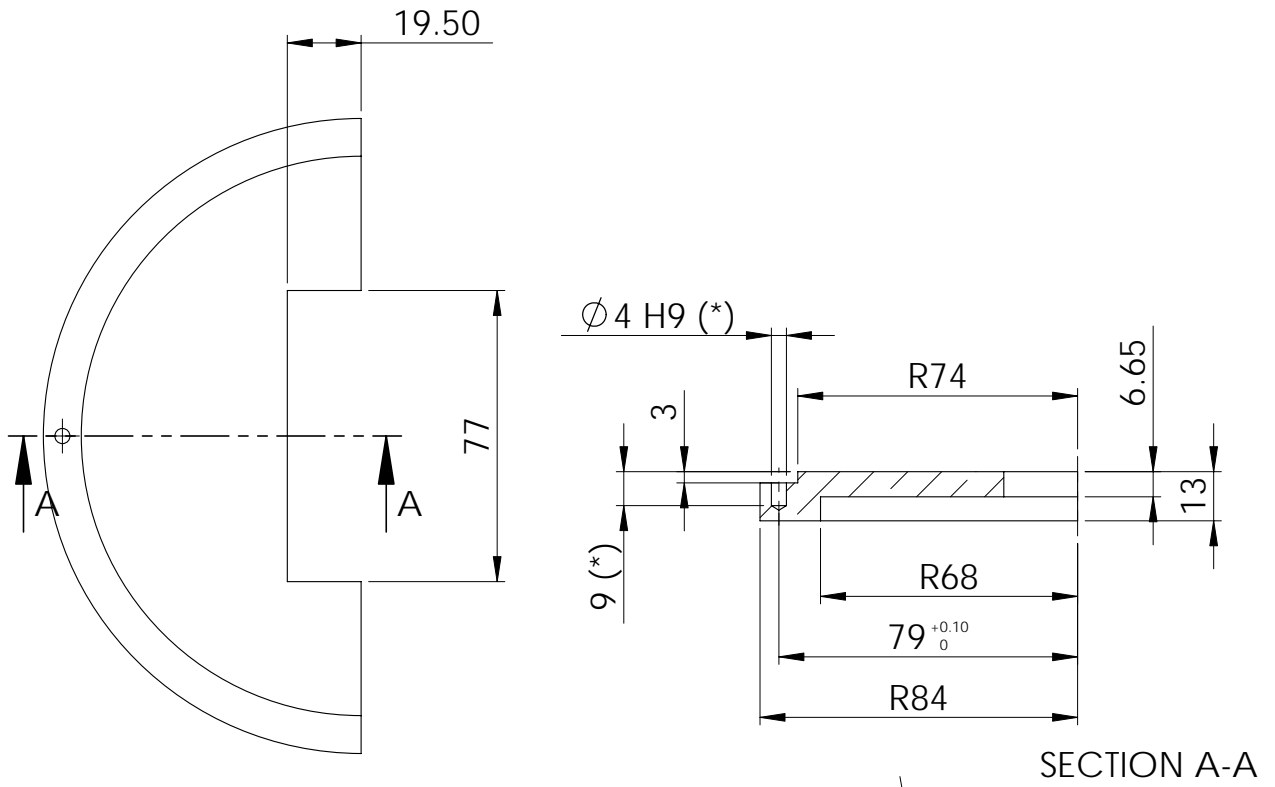
Note: In this drawing only the necessary machining tasks to perform on the microwave waveguide, Model 4056-0YB10 of Penn Engineering components are shown.

		TITLE:			GENERAL DIMENSIONAL TOLERANCES: ISO 2768 Medium	
		Rectangular waveguide A				
	DRAWN	SIZE	DWG. NO.	PSFC-01-2201-A	QUANT.	1
	J.Reig	A4				
DATE	SCALE:	MATERIAL	FINISH			
21/05/2010	1:2	Brass	-			

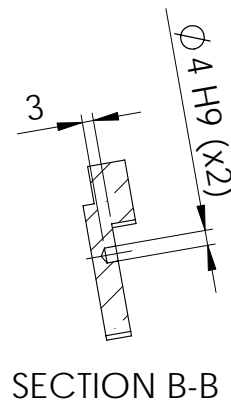
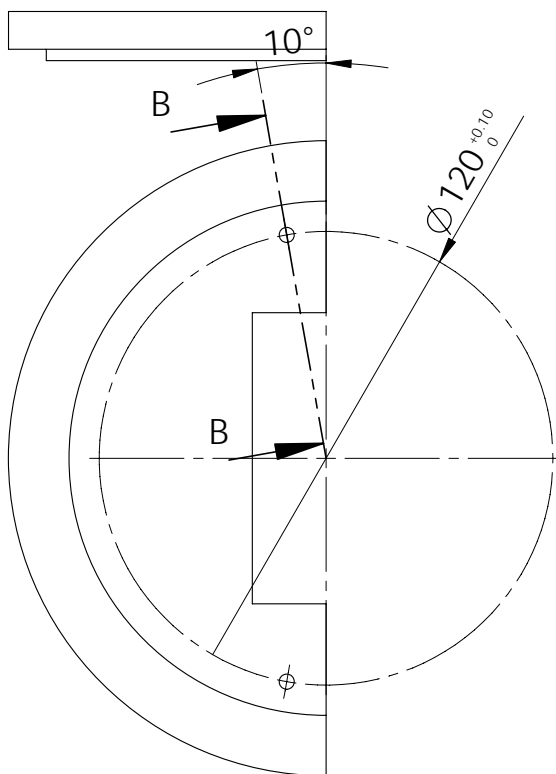


Note: In this drawing only the necessary machining tasks to perform on the microwave waveguide, Model 4056-YYB10 of Penn Engineering components are shown.

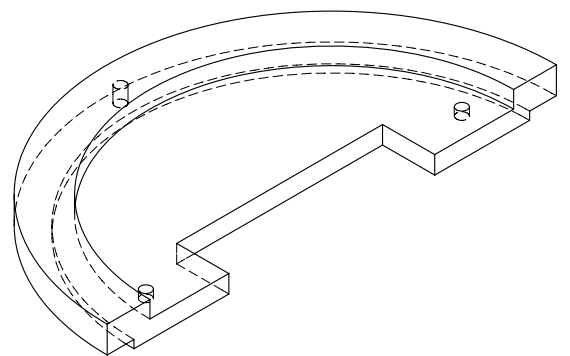
		TITLE:			GENERAL DIMENSIONAL TOLERANCES: ISO 2768 Medium	
		Rectangular waveguide B				
	DRAWN	SIZE	DWG. NO.	PSFC-01-2201-B	QUANT.	1
	J.Reig	A4				
DATE	SCALE:	MATERIAL	FINISH			
21/05/2010	1:2	Brass	-			



SECTION A-A

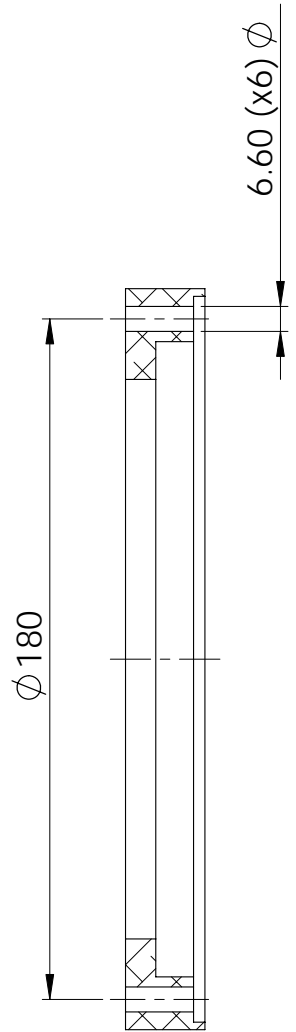
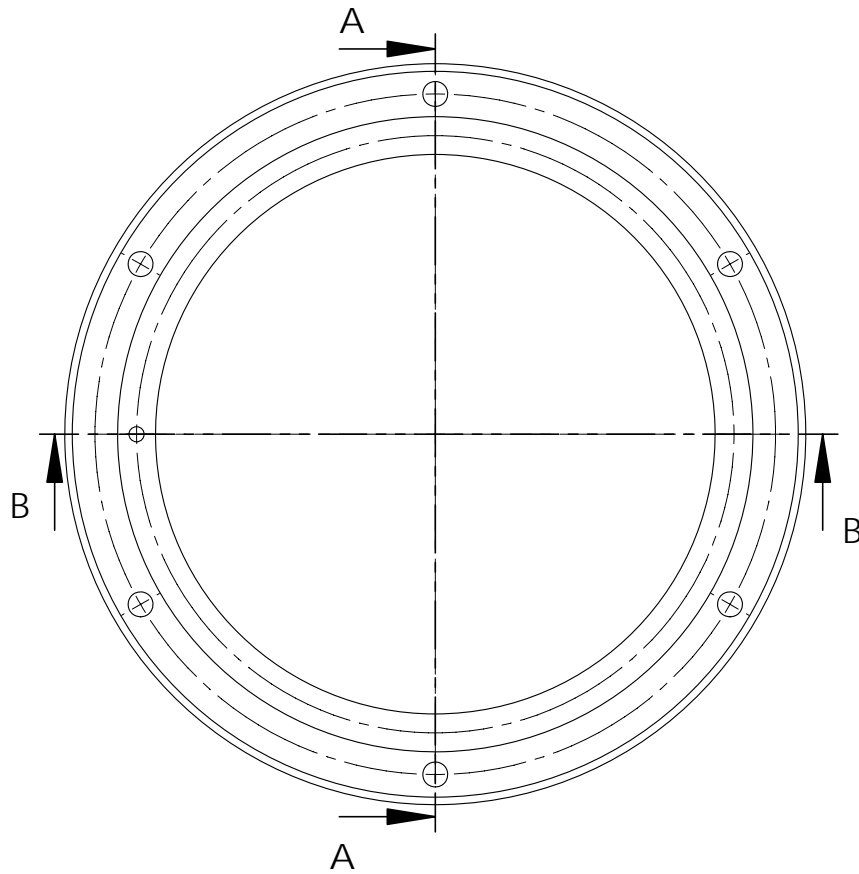
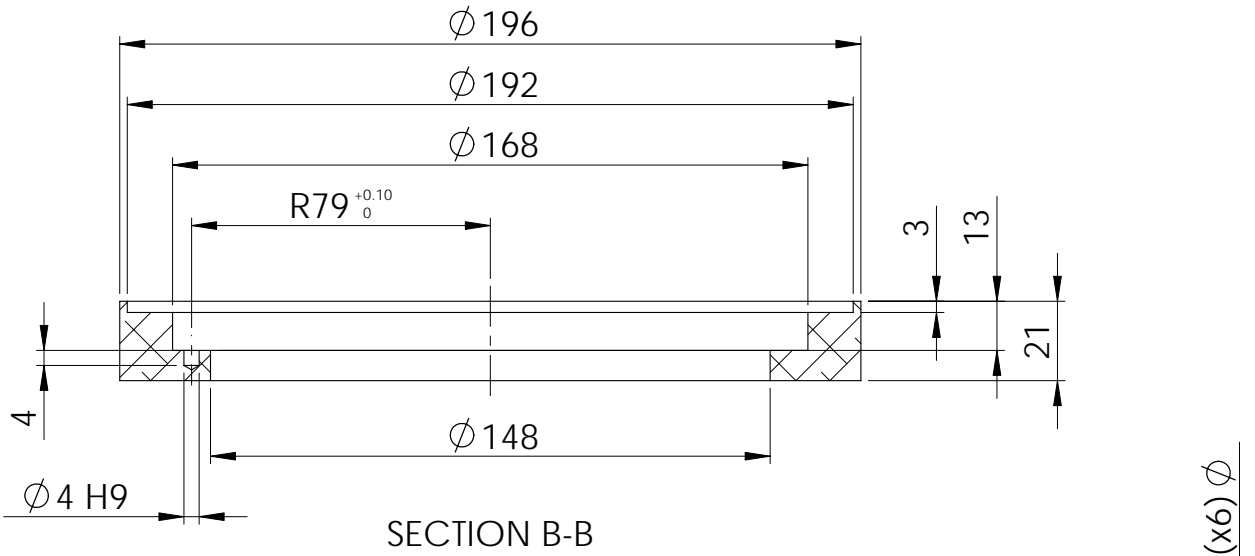


SECTION B-B

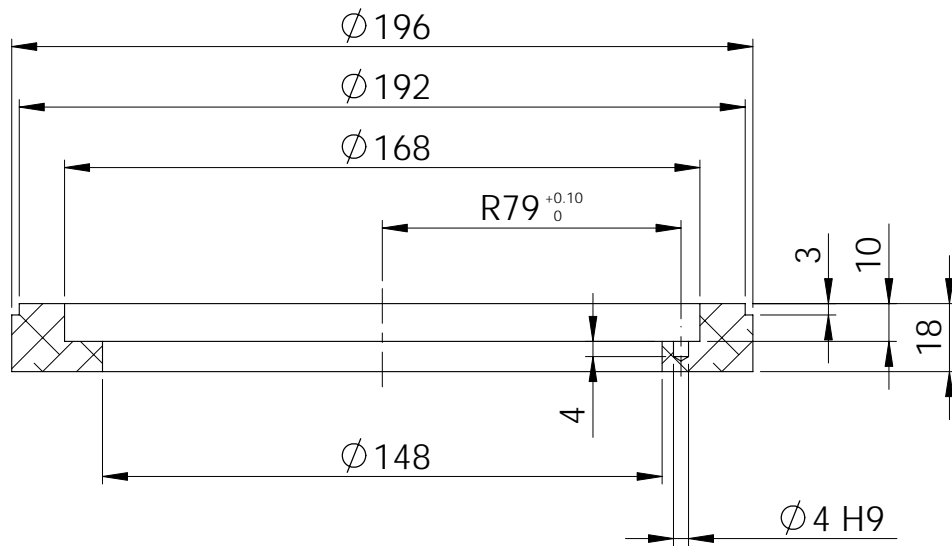


* **Note:** 2 units with the hole ($\phi 4 \times 9 \text{mm}$) - PSFC-01-2202_A
 2 units without the hole ($\phi 4 \times 9 \text{mm}$) - PSFC-01-2202_B

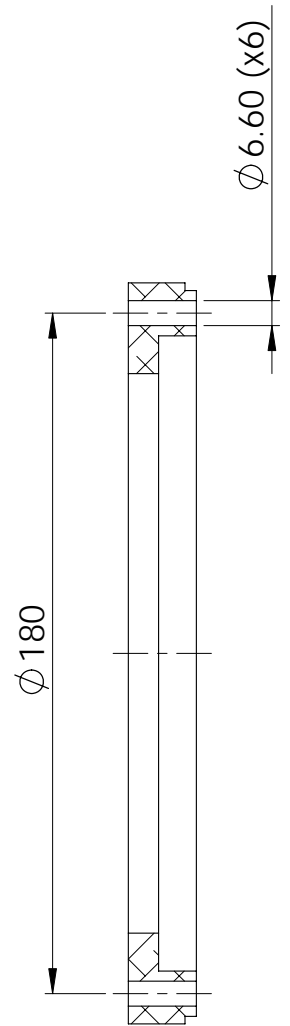
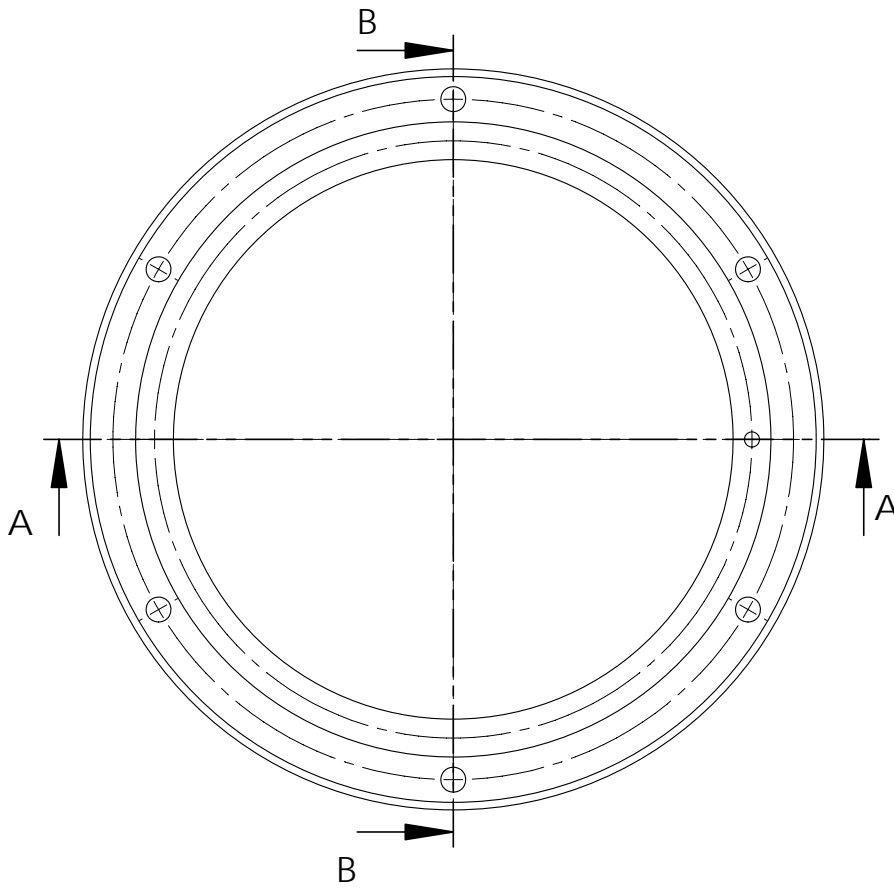
		TITLE:			GENERAL DIMENSIONAL TOLERANCES: ISO 2768 Medium	
		G10 sandwich A and B				
	DRAWN	SIZE	DWG. NO.	PSFC-01-2202_A/B	QUANT.	
	J.Reig	A4				2+2
DATE	SCALE:	1:2	MATERIAL	G10	FINISH	-
14/04/2010						



		TITLE: Fixing ring A			GENERAL DIMENSIONAL TOLERANCES: ISO 2768 Medium	
	DRAWN J.Reig	SIZE A4	DWG. NO. PSFC-01-2203		QUANT. 1	
	DATE 14/04/2010	SCALE: 1:2	MATERIAL Aluminum	FINISH -		



SECTION A-A

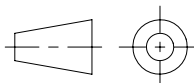


SECTION B-B



TITLE:
Fixing ring B

GENERAL DIMENSIONAL
TOLERANCES:
DIN 7168 Medium



DRAWN
J.Reig
DATE
13/04/2010

SIZE
A4

DWG. NO.

PSFC-01-2204

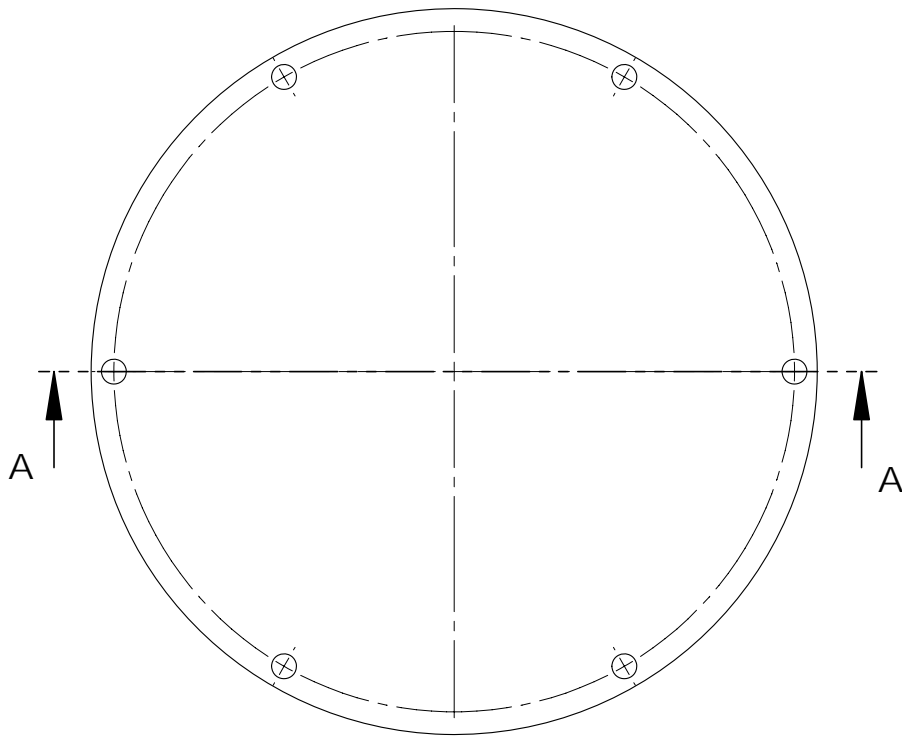
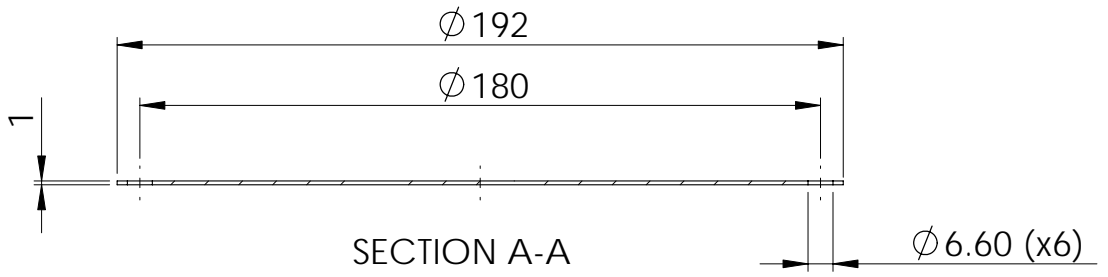
QUANT. **1**

SCALE: **1:2**

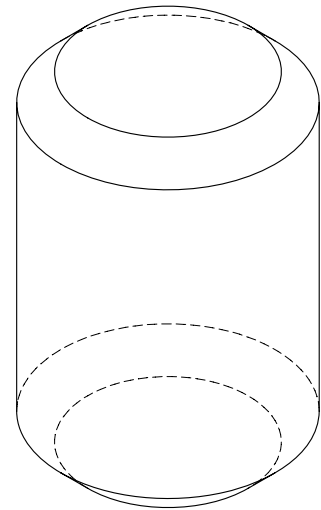
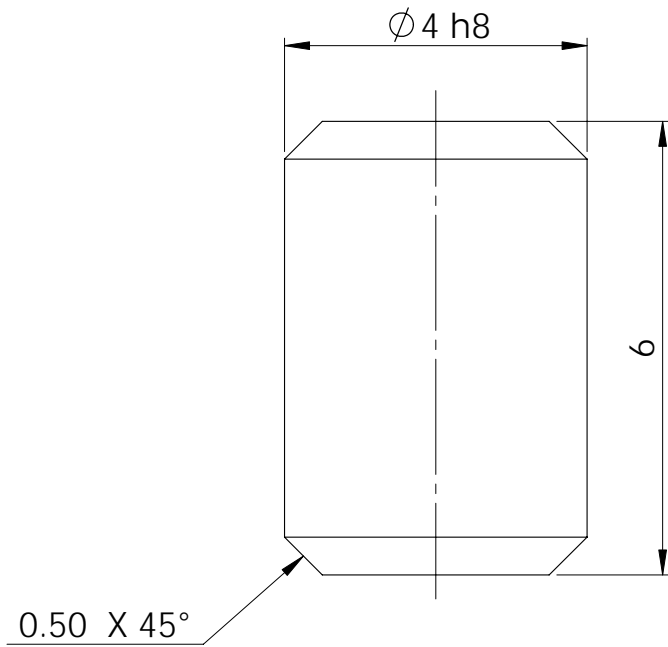
MATERIAL
Aluminum

FINISH

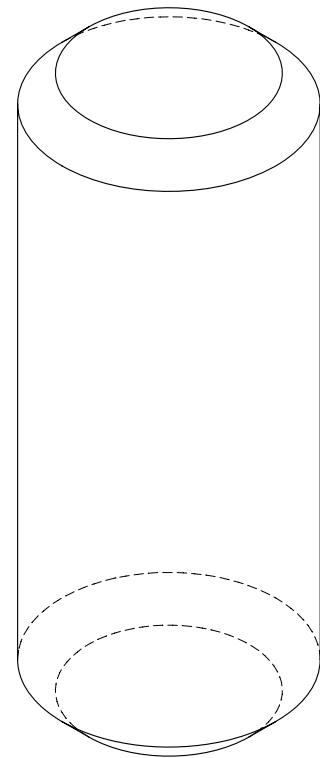
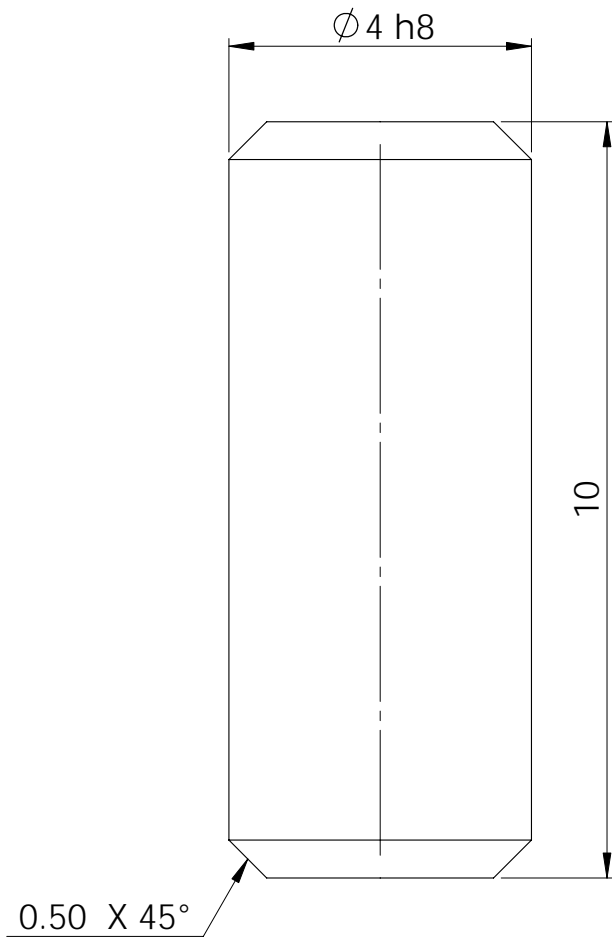
-



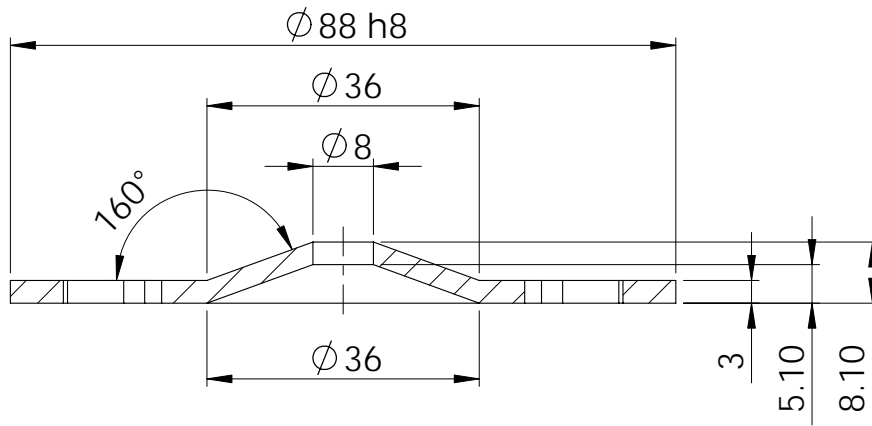
		TITLE:			GENERAL DIMENSIONAL TOLERANCES: ISO 2768 Medium	
		Kapton film				
	DRAWN J.Reig	SIZE A4	DWG. NO. PSFC-01-2205		QUANT. 1	
	DATE 14/04/2010	SCALE: 1:2	MATERIAL Kapton	FINISH -		



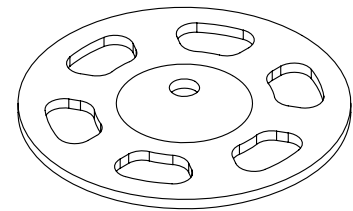
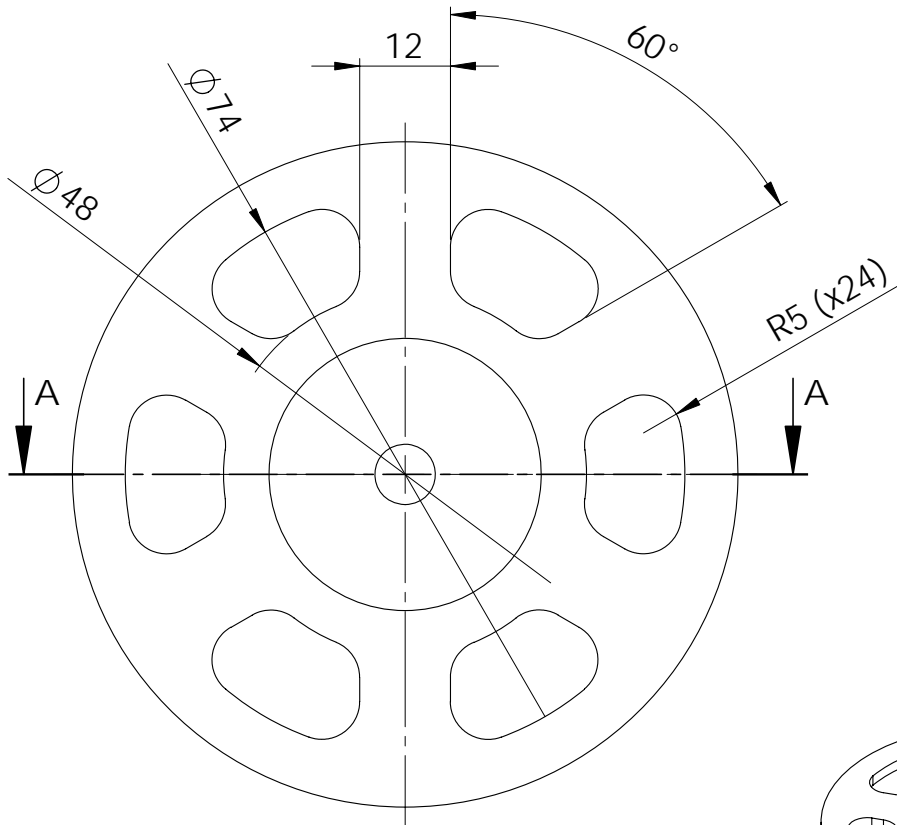
		TITLE:				
		Microwave dowel 6mm			GENERAL DIMENSIONAL TOLERANCES: ISO 2768 Medium	
	DRAWN	SIZE	DWG. NO.	PSFC-01-2206	QUANT.	8
	J.Reig	A4				
DATE	SCALE:	MATERIAL	FINISH			
14/04/2010	10:1	AISI 1020				-



		TITLE:				
		Microwave dowel 10mm			GENERAL DIMENSIONAL TOLERANCES: ISO 2768 Medium	
	DRAWN	SIZE	DWG. NO.	PSFC-01-2207	QUANT.	2
	J.Reig	A4				
DATE	SCALE:	MATERIAL	FINISH			
14/04/2010	10:1	AISI 1020				-



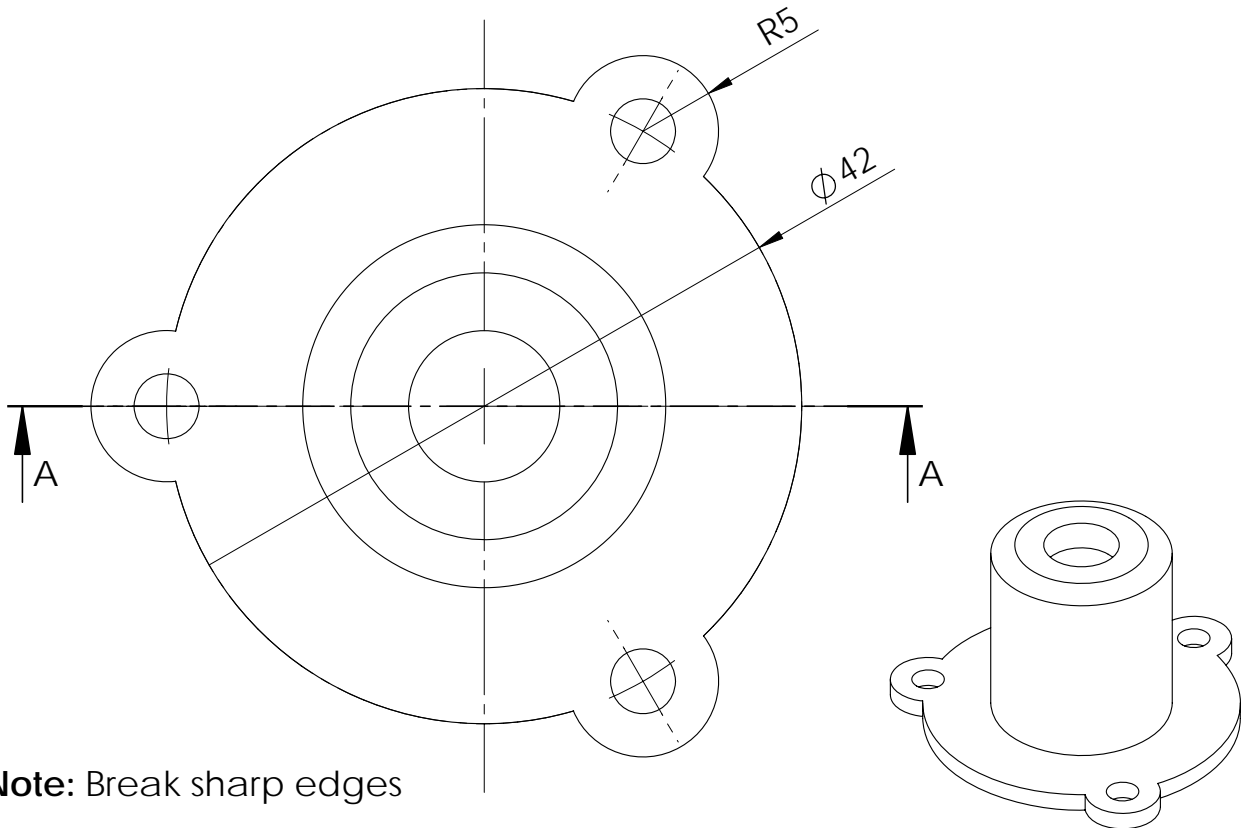
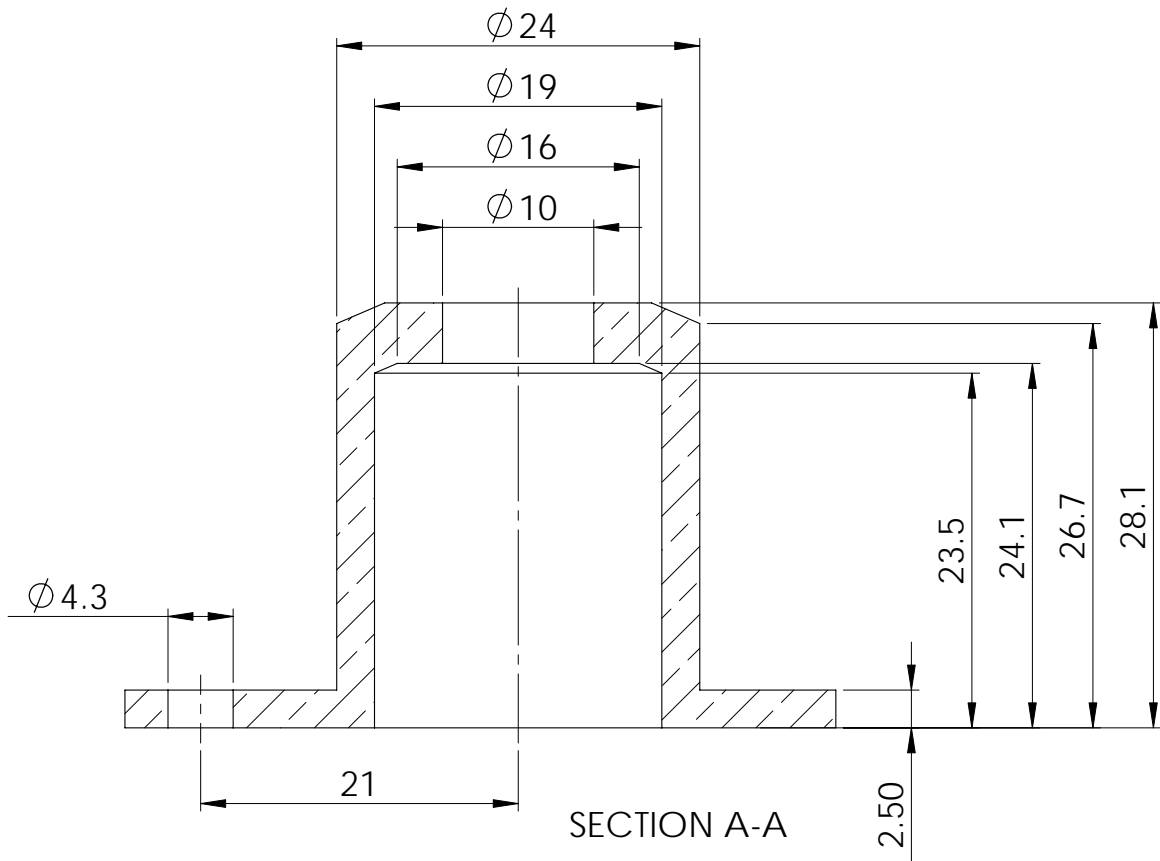
SECTION A-A



Note: Break sharp edges

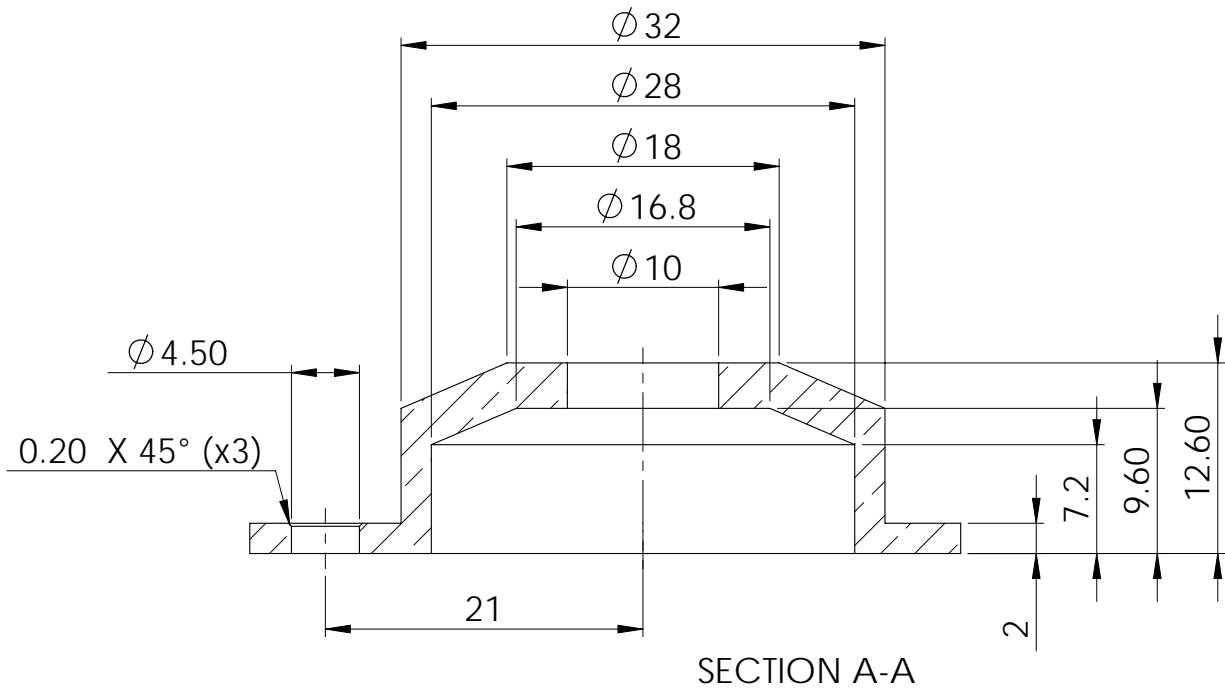
Isometric view
Scale 1:2

		TITLE:			GENERAL DIMENSIONAL TOLERANCES: ISO 2768 Medium	
		Extraction electrode				
	DRAWN J.Reig	SIZE A4	DWG. NO.	PSFC-01-3001	QUANT.	1
	DATE 21/05/2010	SCALE:	1:1	MATERIAL AISI 1020	FINISH	-

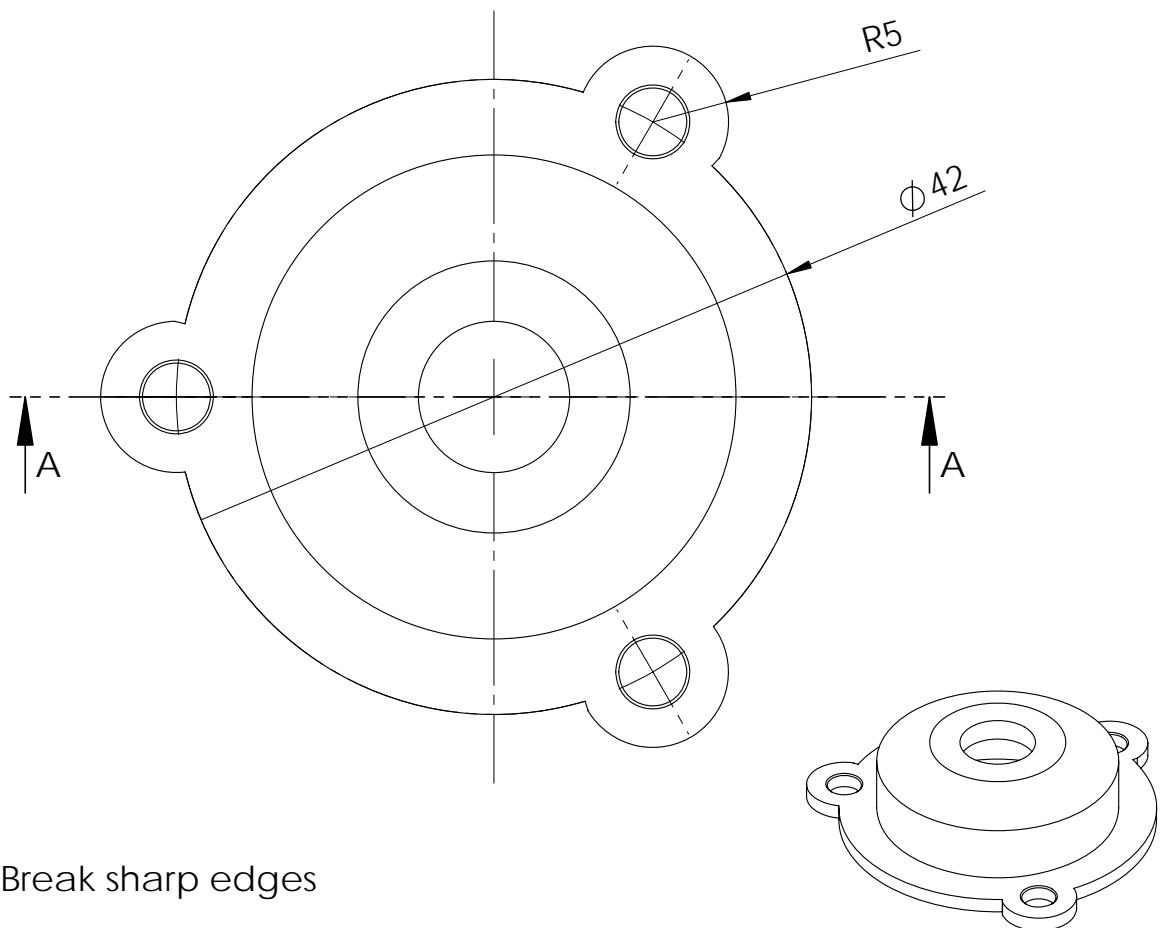


Note: Break sharp edges

		TITLE:			GENERAL DIMENSIONAL TOLERANCES: ISO 2768 Medium	
		Ground electrode				
	DRAWN	SIZE	DWG. NO.	PSFC-01-3002	QUANT.	
	J.Reig	A4				1
DATE	SCALE:	2:1	MATERIAL	Copper	FINISH	
17/05/2010					-	

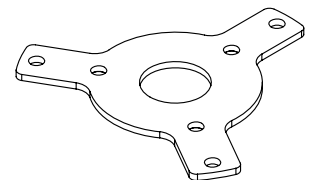
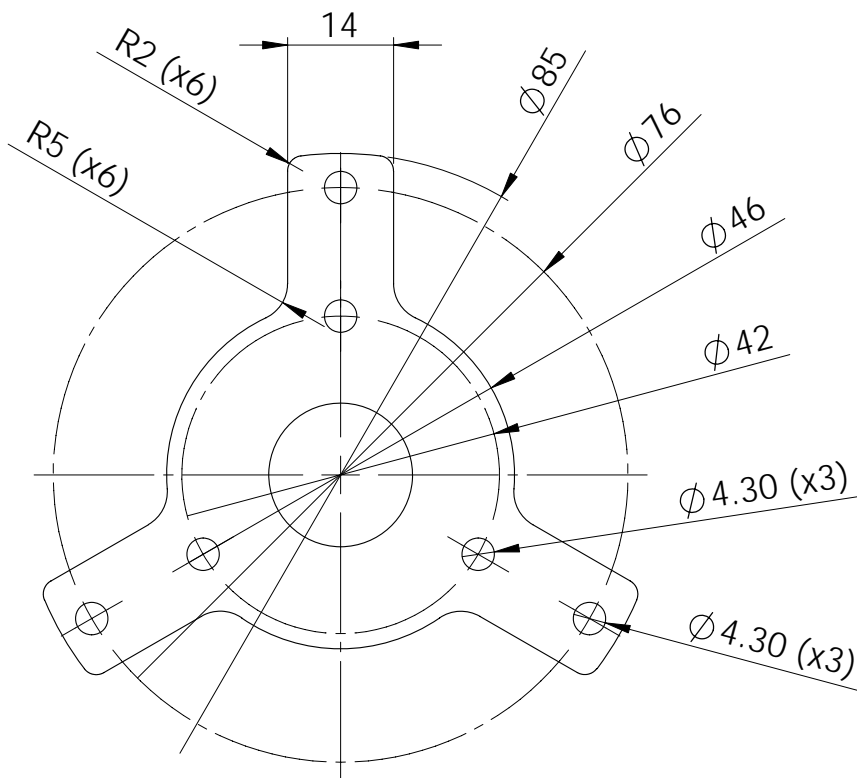
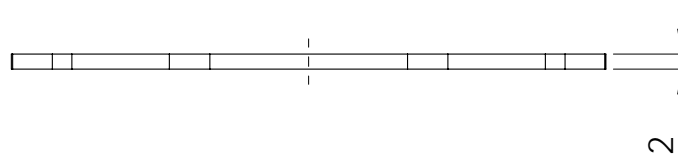


SECTION A-A



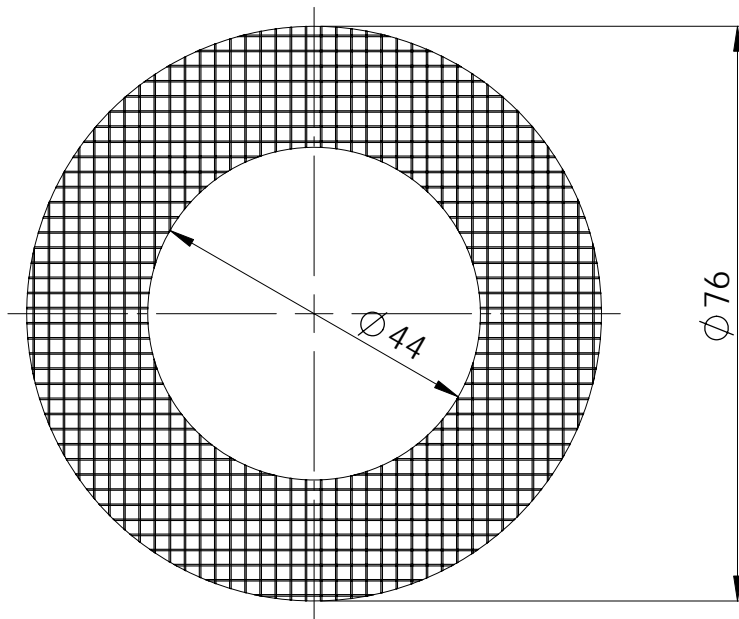
Note: Break sharp edges

		TITLE:			GENERAL DIMENSIONAL TOLERANCES: ISO 2768 Medium	
		Suppressor electrode				
	DRAWN	SIZE	DWG. NO.	PSFC-01-3003	QUANT.	
	J.Reig	A4				1
DATE	SCALE:		MATERIAL	FINISH		
17/05/2010	2:1		Copper	-		

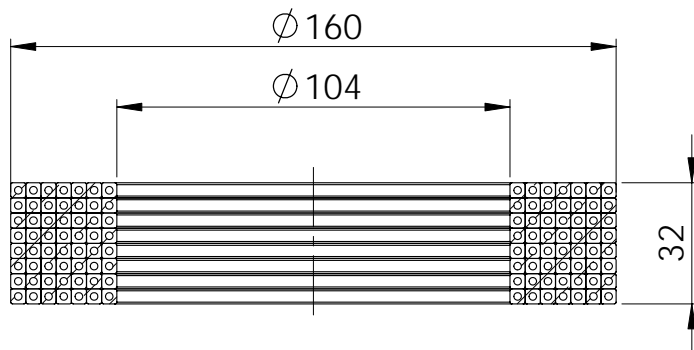


Isometric view
Scale: 1:2

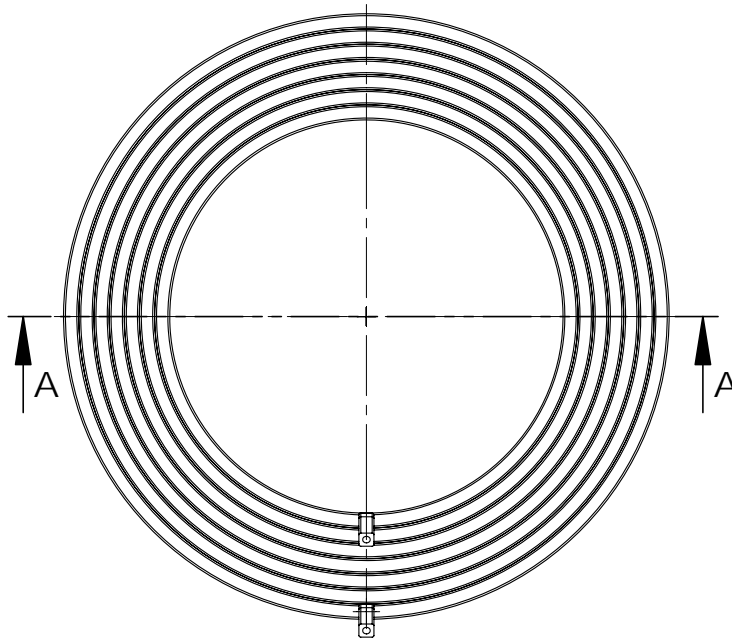
		TITLE:			GENERAL DIMENSIONAL TOLERANCES: ISO 2768 Medium	
		Ground electrode's support				
	DRAWN J.Reig	SIZE A4	DWG. NO.	PSFC-01-3004		QUANT. 1
	DATE 21/05/2010	SCALE:	1:1	MATERIAL Copper	FINISH	-



		TITLE:			GENERAL DIMENSIONAL TOLERANCES: ISO 2768 Medium
		Grid			
	DRAWN	SIZE	DWG. NO.	PSFC-01-3005	QUANT.
	J.Reig	A4			1
DATE	SCALE:	MATERIAL	FINISH		
21/05/2010	1:1	Copper	-		

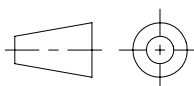


SECTION A-A



TITLE:
Upper coil

GENERAL DIMENSIONAL
TOLERANCES:
ISO 2768 Medium



DRAWN
J.Reig
DATE
21/05/2010

SIZE
A4

DWG. NO.

PSFC-01-4101

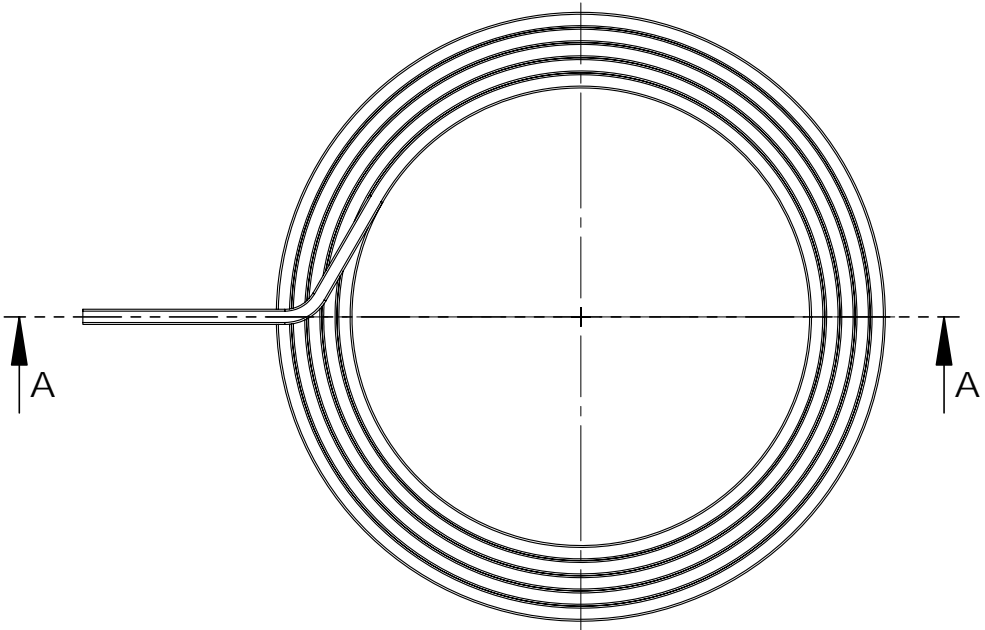
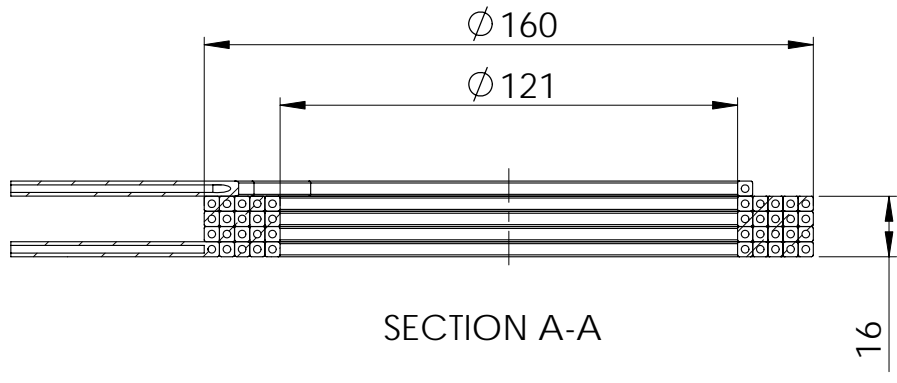
QUANT. 1

SCALE: 1:2

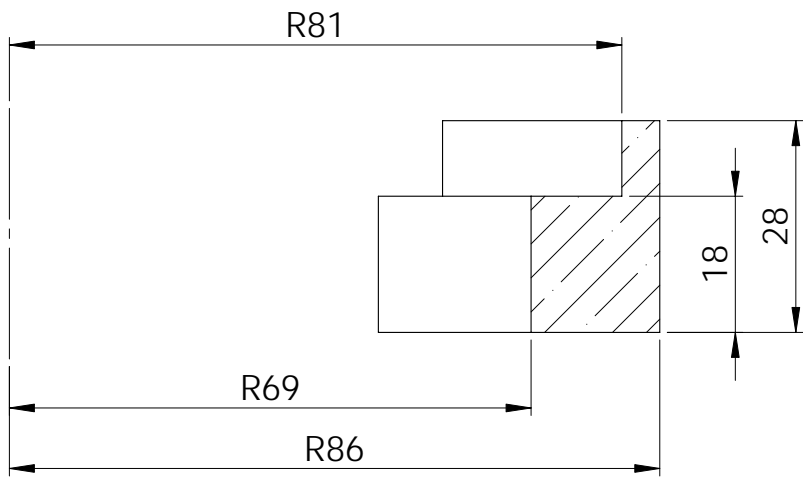
MATERIAL
Copper

FINISH

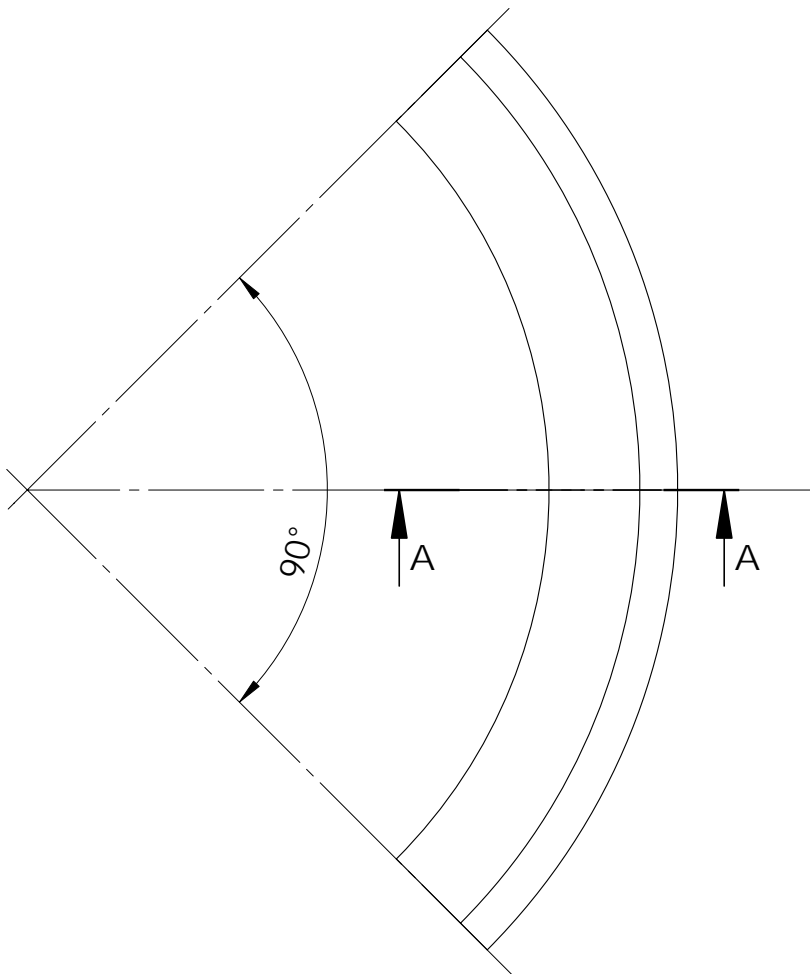
-



	TITLE:		Lower coil		GENERAL DIMENSIONAL TOLERANCES: ISO 2768 Medium
	DRAWN J.Reig	SIZE A4	DWG. NO.	PSFC-01-4201	
	DATE 21/05/2010	SCALE: 1:2	MATERIAL Copper	FINISH -	



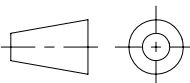
SECTION A-A



TITLE:
Coil positioner

TOLERANCES BETWEEN HOLES:
Bolts ± 0.05 mm
Screws ± 0.2 mm

GENERAL DIMENSIONAL
TOLERANCES:
DIN 7168 Medium



DRAWN
J.Reig

SIZE
A4

DWG. NO.

PSFC-01-4203

QUANT. **2**

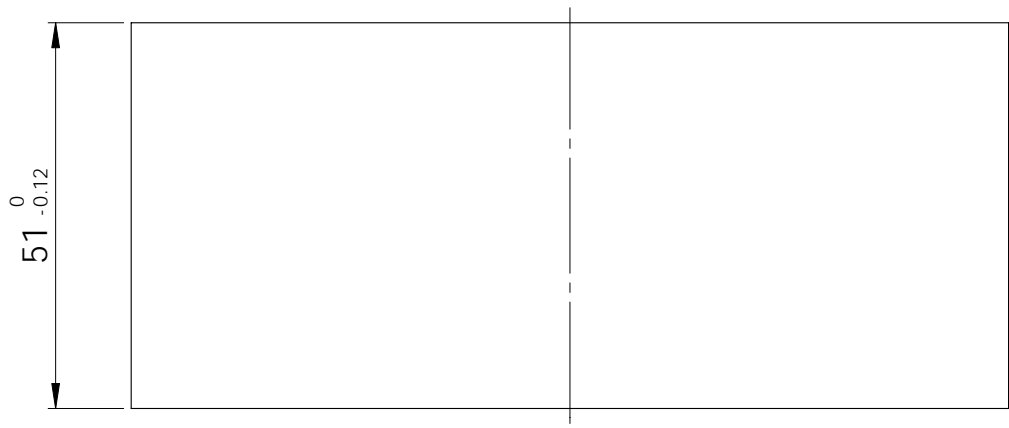
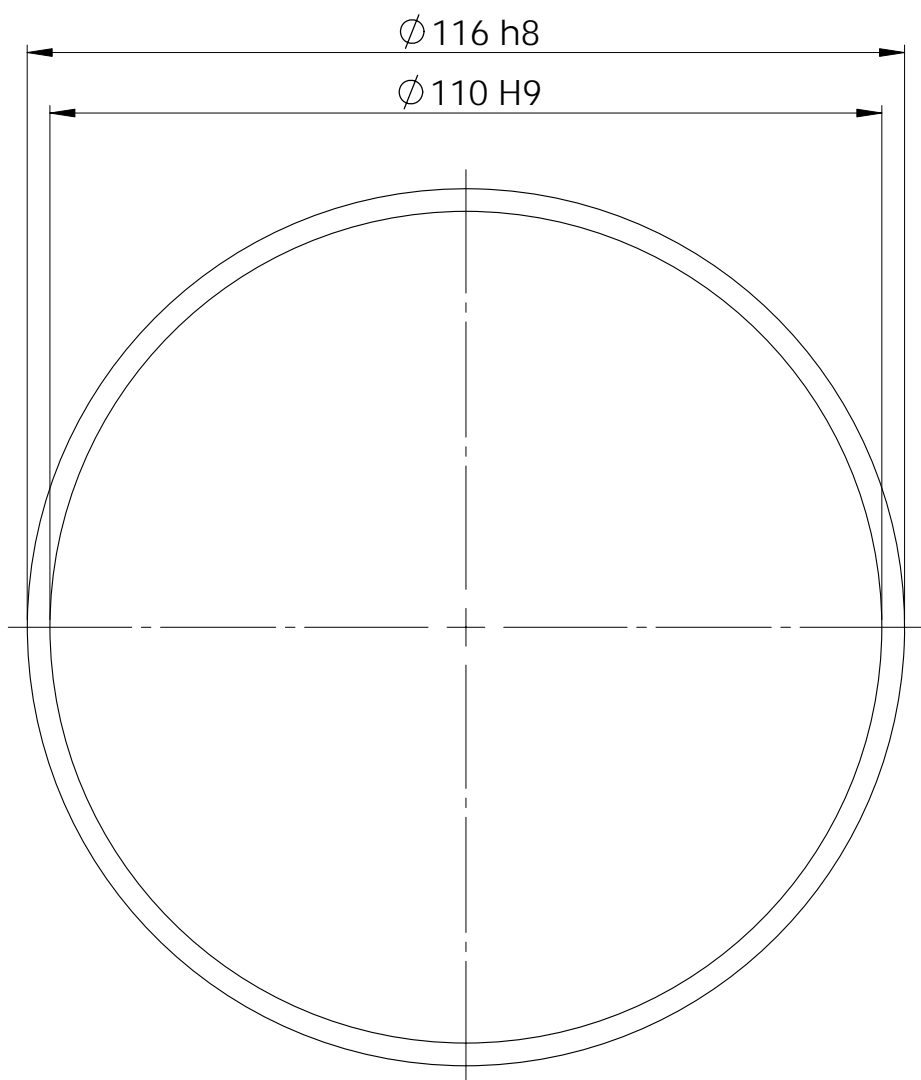
DATE
22/05/2010

SCALE: **1:1**

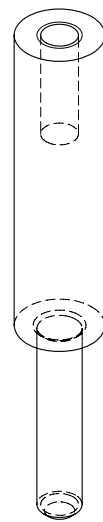
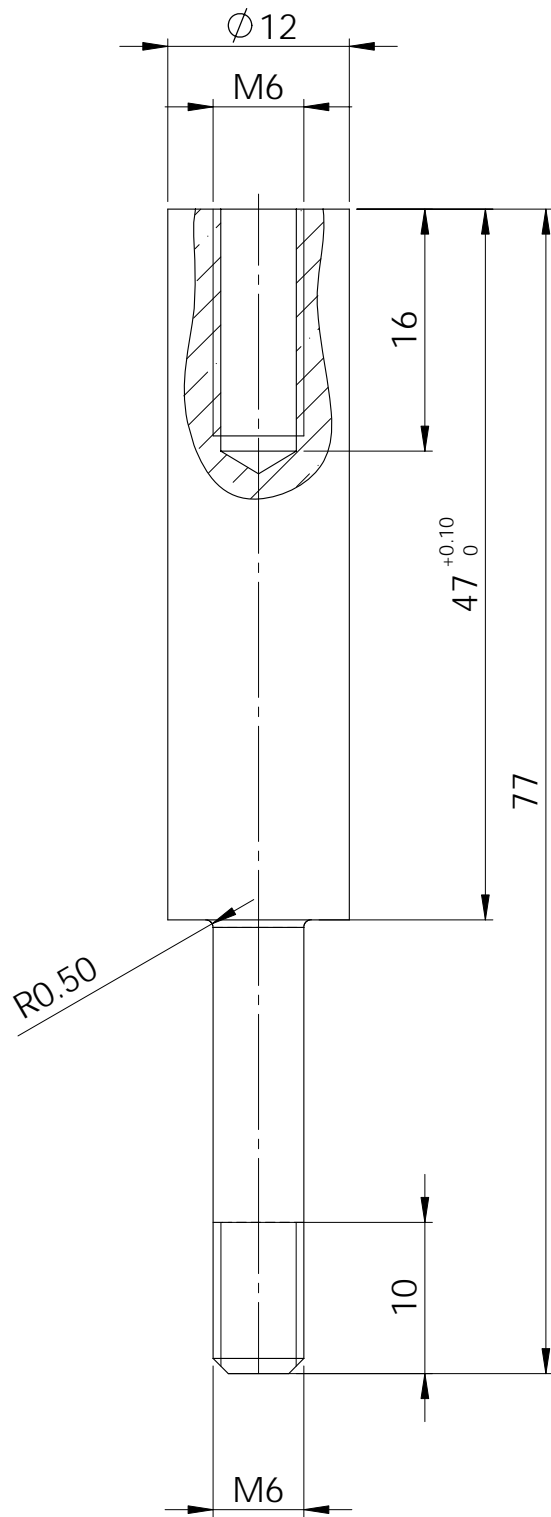
MATERIAL **G10**

FINISH

-

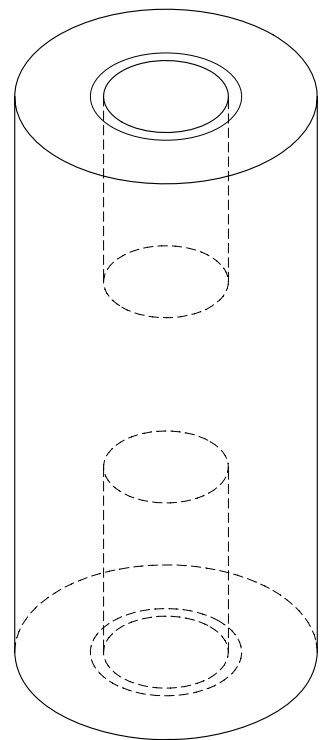
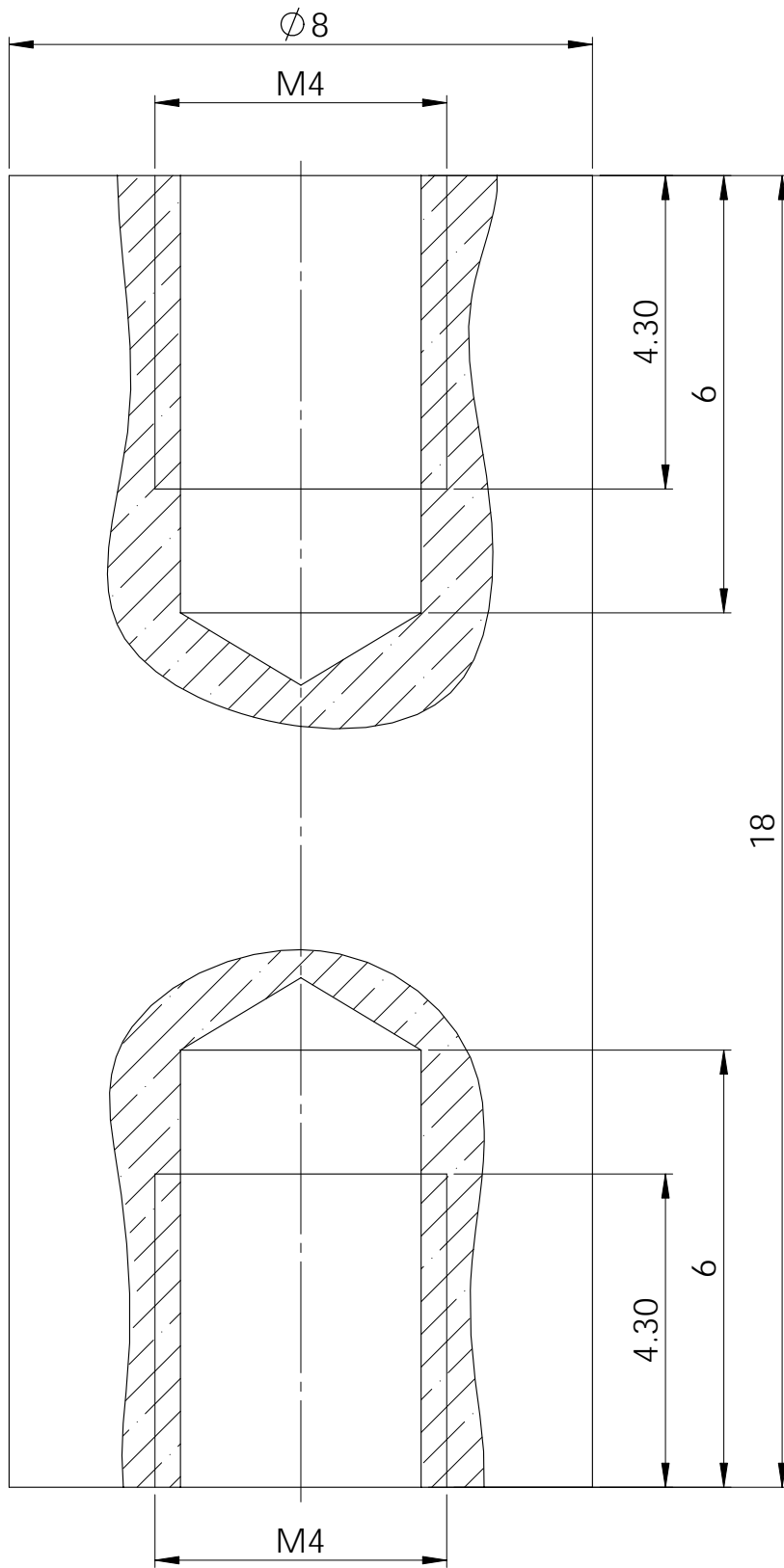


		TITLE:			GENERAL DIMENSIONAL TOLERANCES: ISO 2768 Medium	
		High voltage isolator				
	DRAWN	SIZE	DWG. NO.	PSFC-01-5001	QUANT.	1
	J.Reig	A4			MATERIAL	
DATE	SCALE:	1:1	Alumina		-	
14/04/2010						



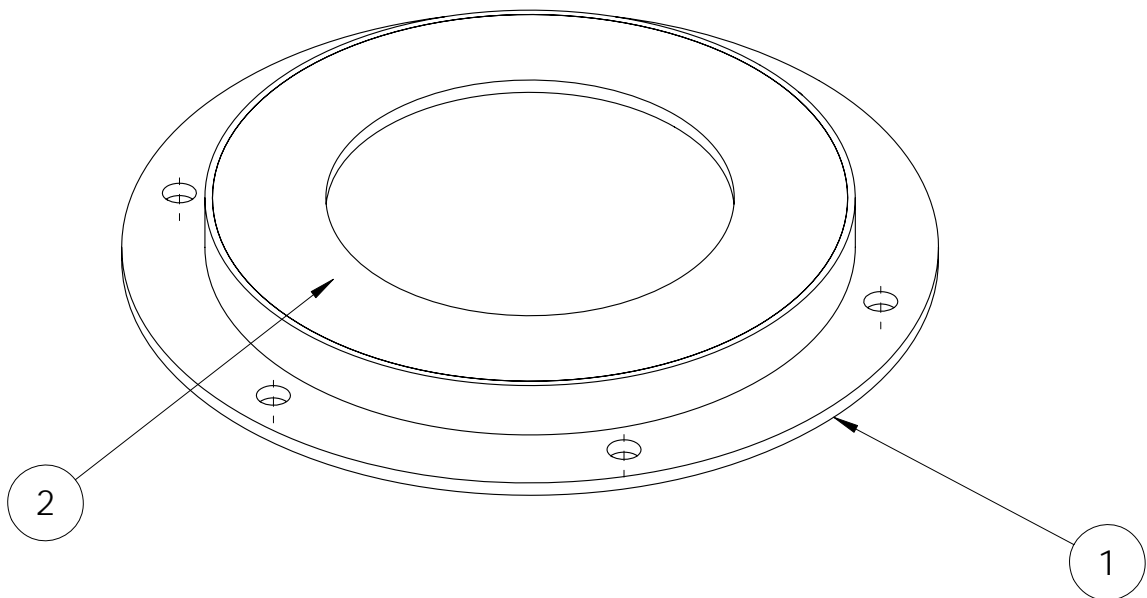
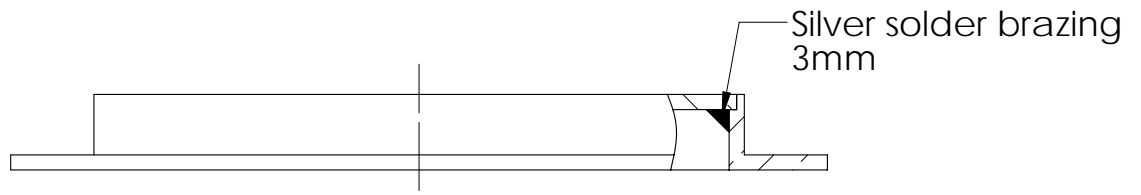
Isometric view
SCALE 1:1

		TITLE:				
		Supporting pins			GENERAL DIMENSIONAL TOLERANCES: ISO 2768 Medium	
	DRAWN	SIZE	DWG. NO.	PSFC-01-5002	QUANT.	6
	J.Reig	A4				
DATE	SCALE:	MATERIAL	FINISH			
14/04/2010	2:1	Delrin	-			



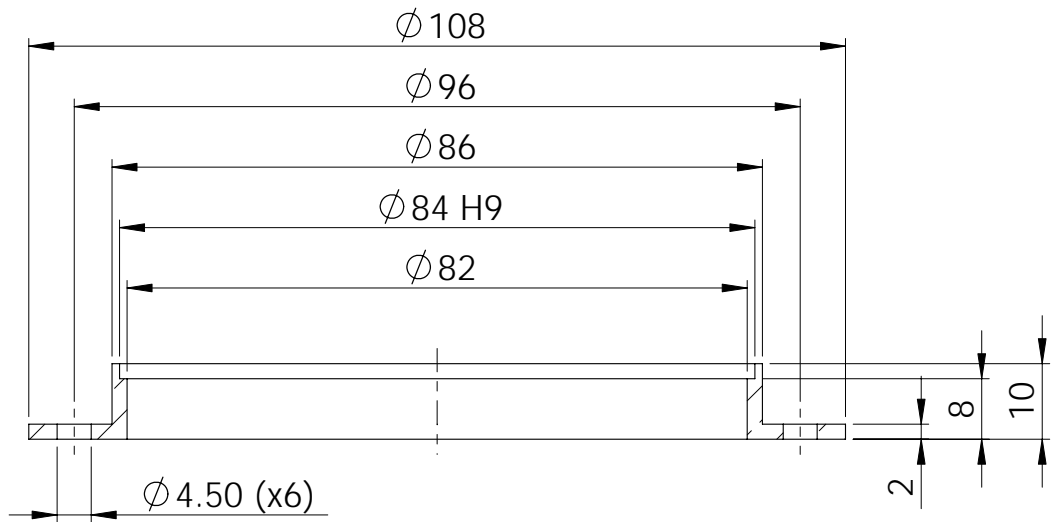
Isometric view
SCALE 5:1

		TITLE:				
		Medium voltage isolator			GENERAL DIMENSIONAL TOLERANCES: ISO 2768 Medium	
	DRAWN J.Reig	SIZE A4	DWG. NO.	PSFC-01-5003	QUANT.	3
	DATE 14/04/2010	SCALE:	10:1	MATERIAL Macor	FINISH	-

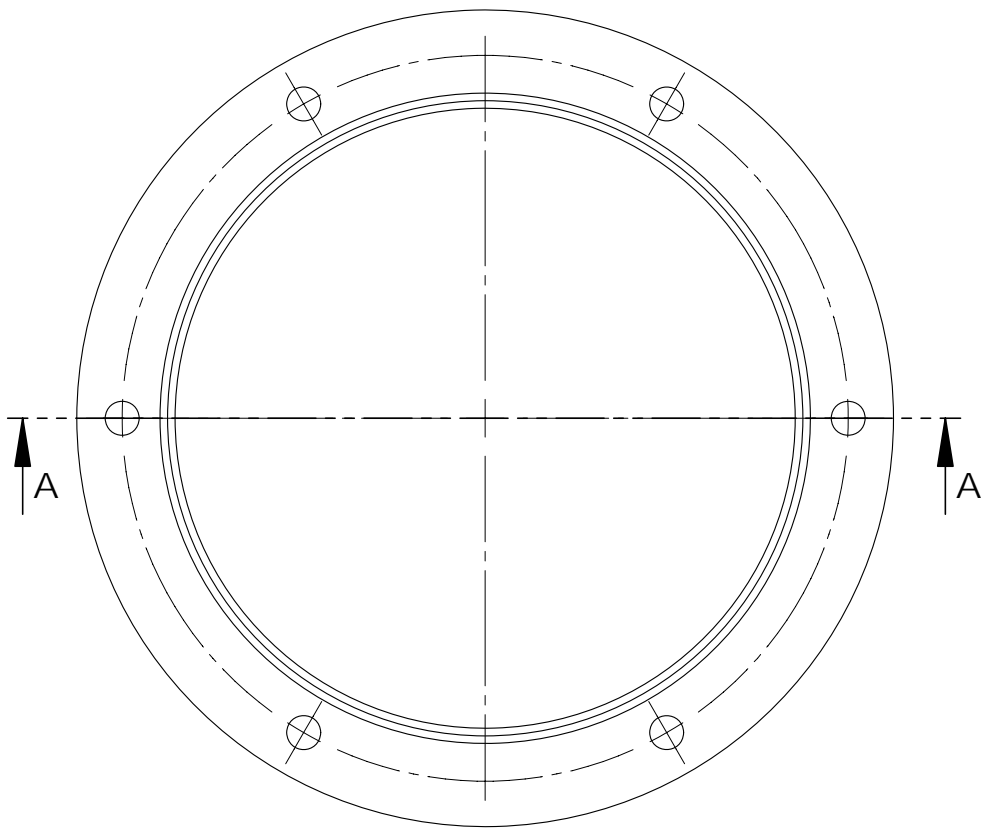


ITEM NO.	PART NUMBER	DESCRIPTION	QTY.
1	PSFC-01-6101	Small protector's base	1
2	PSFC-01-6102	Small protector's ring	1

	TITLE: Small shield		GENERAL DIMENSIONAL TOLERANCES: ISO 2768 Medium	
	DRAWN J.Reig	SIZE A4	DWG. NO. PSFC-01-6100	QUANT. 1
	DATE 14/04/2010	SCALE: 1:1	MATERIAL -	FINISH -

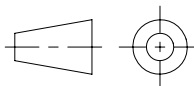


SECTION A-A



TITLE:
Small shield's base

GENERAL DIMENSIONAL
TOLERANCES:
ISO 2768 Medium



DRAWN
J.Reig

SIZE
A4

DWG. NO.

PSFC-01-6101

QUANT. 1

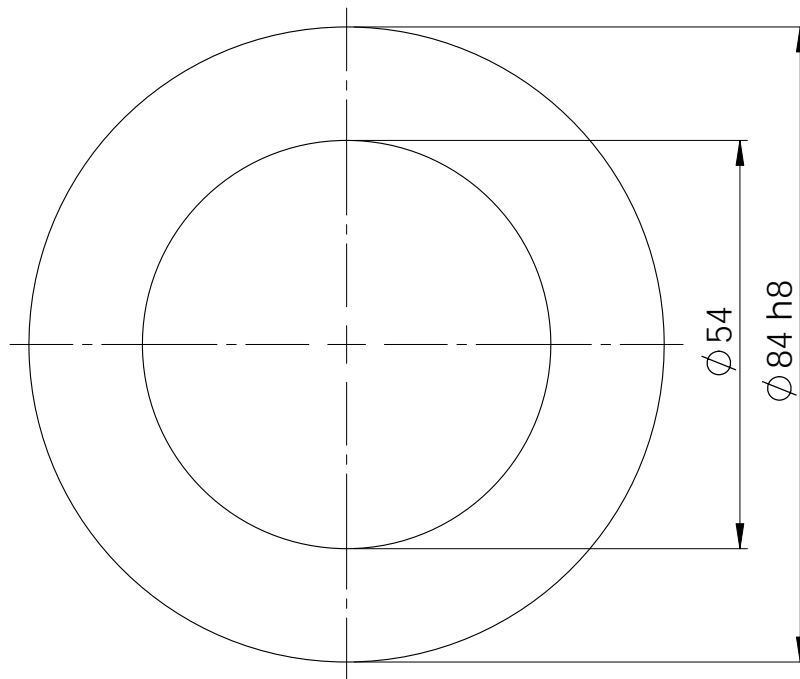
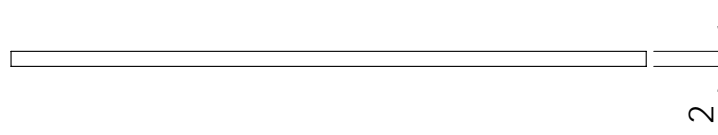
DATE
14/04/2010

SCALE: 1:1

MATERIAL
Copper

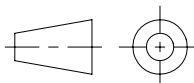
FINISH

-



TITLE:
Small shield's ring

GENERAL DIMENSIONAL
TOLERANCES:
ISO 2768 Medium



DRAWN
J.Reig
DATE
14/04/2010

SIZE
A4

DWG. NO.

PSFC-01-6102

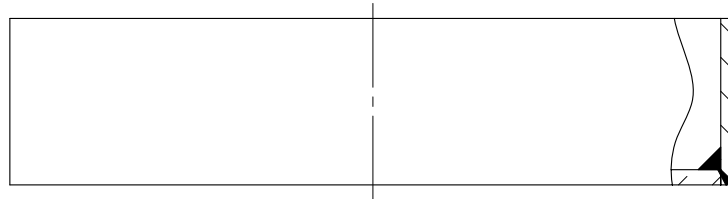
QUANT. 1

SCALE: 1:1

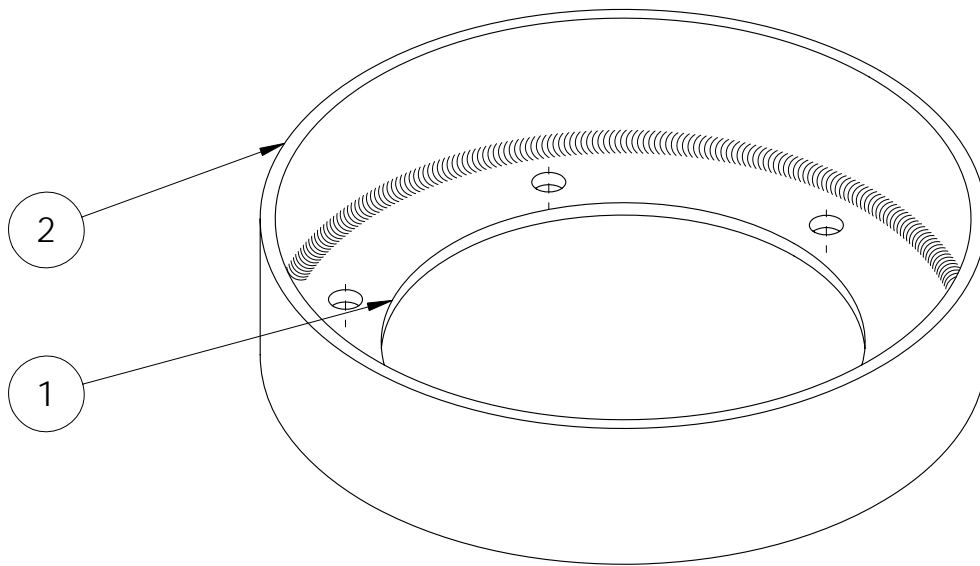
MATERIAL
Copper

FINISH

-



Silver solder
brazing
3mm

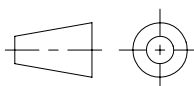


ITEM NO.	PART NUMBER	DESCRIPTION	QTY.
1	PSFC-01-6201	Large protector's base	1
2	PSFC-01-6202	Large protector's cylinder	1



TITLE:
Large shield

GENERAL DIMENSIONAL
TOLERANCES:
ISO 2768 Medium



DRAWN
J.Reig

SIZE
A4

DWG. NO.

PSFC-01-6200

QUANT. **1**

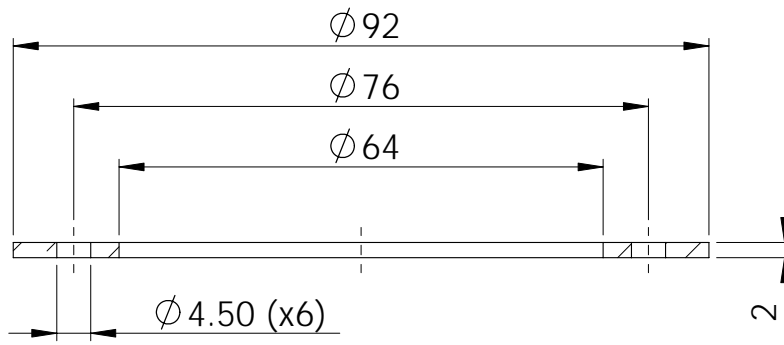
DATE
14/04/2010

SCALE: **1:1**

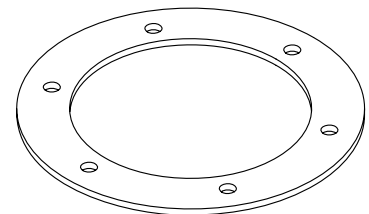
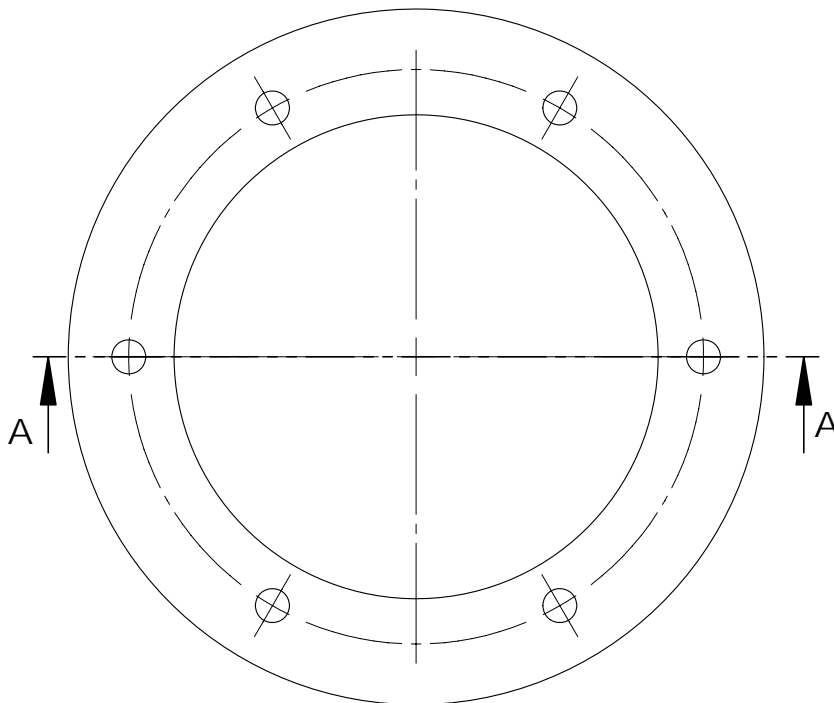
MATERIAL

FINISH

-

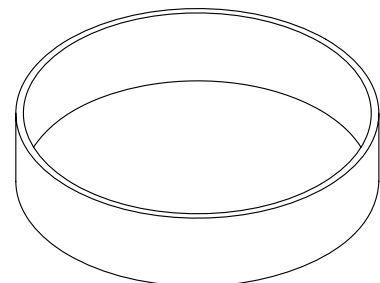
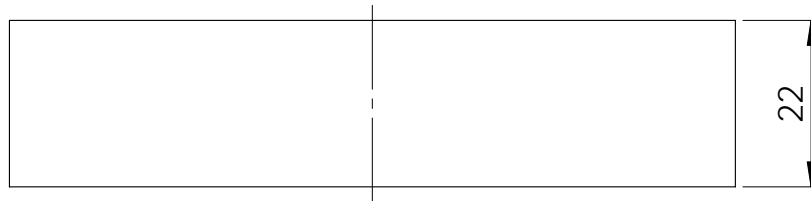
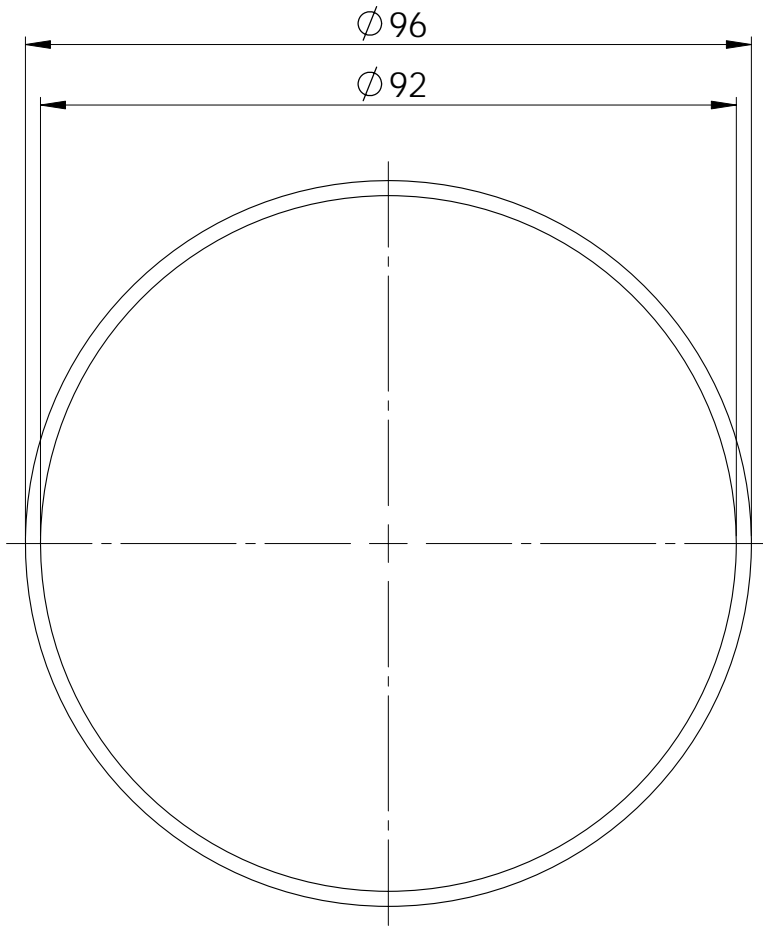


SECTION A-A



Isometric view
SCALE 1:2

		TITLE:			GENERAL DIMENSIONAL TOLERANCES: ISO 2768 Medium	
		Large shield's base				
	DRAWN	SIZE	DWG. NO.	PSFC-01-6201	QUANT.	
	J.Reig	A4			1	
DATE	SCALE:	MATERIAL	FINISH			
14/04/2010	1:1	Copper	-			



		TITLE:			
		Large shield's cylinder			GENERAL DIMENSIONAL TOLERANCES: ISO 2768 Medium
	DRAWN J.Reig	SIZE A4	DWG. NO.	PSFC-01-6202	QUANT. 1
	DATE 14/04/2010	SCALE: 1:1	MATERIAL Copper	FINISH -	