



Escola Tècnica Superior d'Enginyeries
Industrial i Aeronàutica de Terrassa

UNIVERSITAT POLITÈCNICA DE CATALUNYA

ETSEIAT
Grau en Enginyeria en Tecnologies Industrials

Design of a bench to allocate accelerometers and gyroscopes on a sailplane

Drawings

Author:

Oscar Castro Ruiz

Director:

Ricardo Villar

Co-director:

Rafael Weyler

[12-06-2015]



Plain Index

Vertical disposition for x-IMU

x-IMU vertical (1).....	1
Cover (2)	2
Cover's screw (3)	2
Assembly.....	3

Horizontal disposition for x-IMU

x-IMU horizontal (1)	4
Cover (2)	5
Assembly.....	6

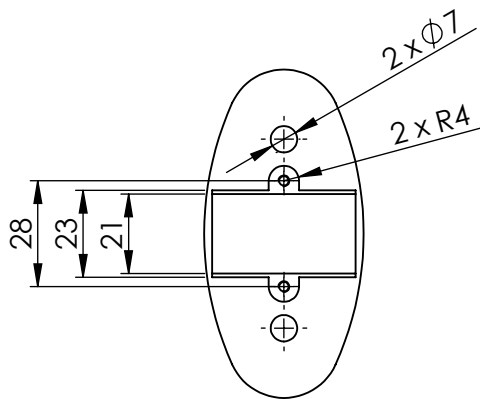
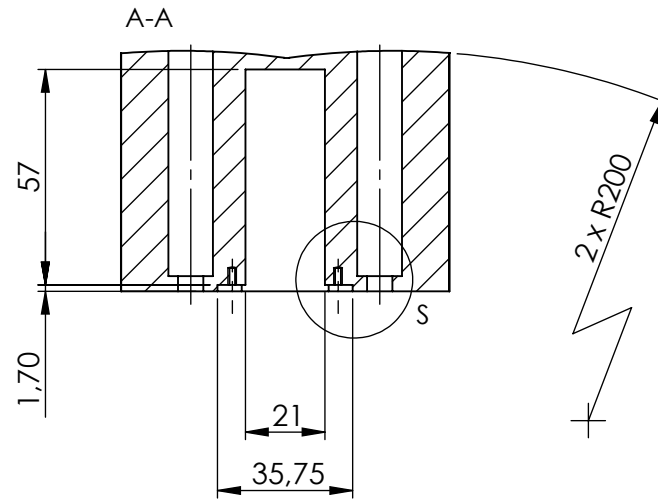
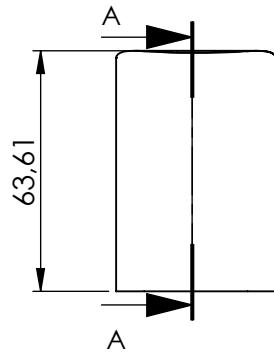
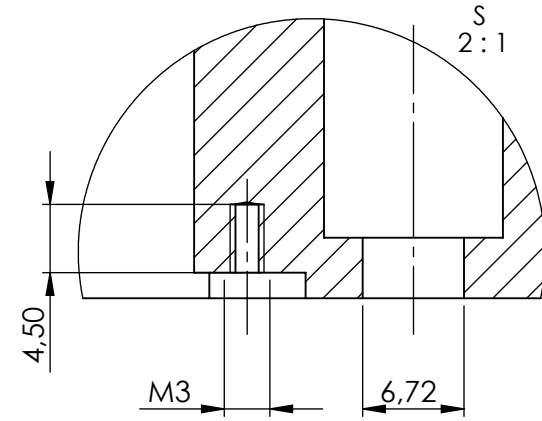
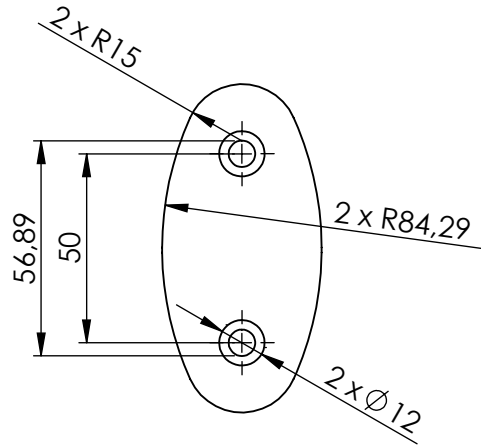
MSR255 wing tip attachment


Wing tip attachment.....	7
Ribbon attachment.....	7
Assembly.....	8

MSR255 fuselage attachment

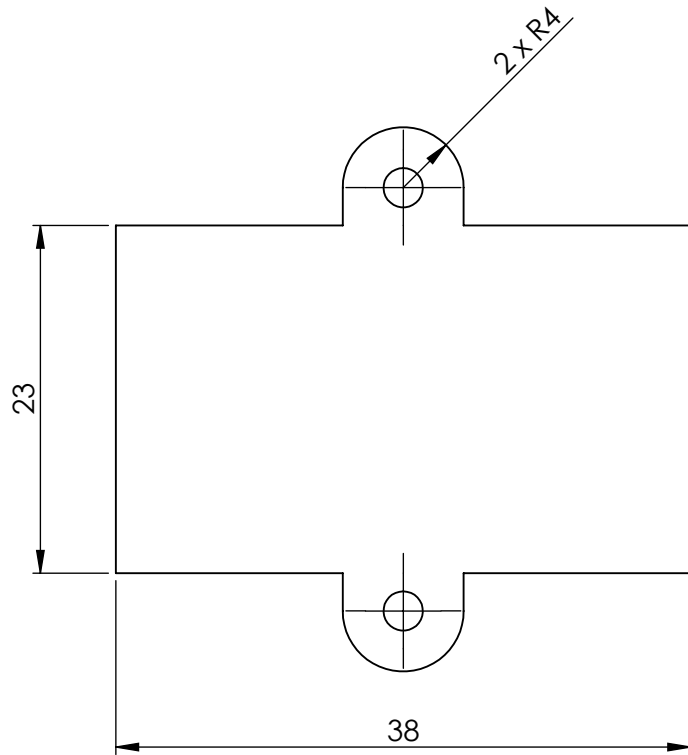
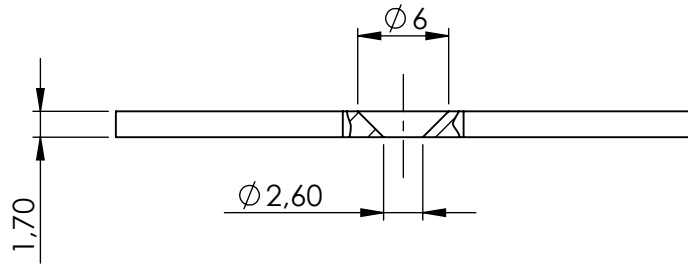
Fuselage attachment.....	9
Ribbon attachment.....	9
Assembly.....	10

①

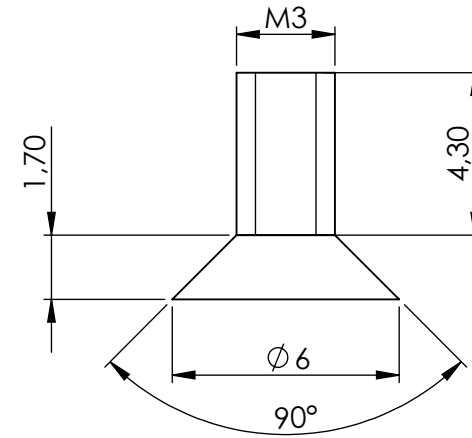
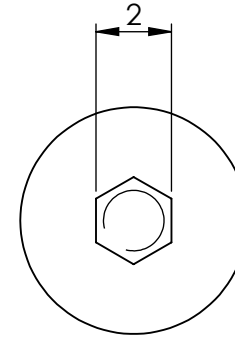



Quant/Mark	Name	Scale	Material:	Directive	Size
1/1	x-IMU vertical	1:2	ABS	-	87 x 43 x 64
	Vertical disposition for x-IMU	ETSEIAT		TFG	
June 2015			Design of a bench to allocate accelerometers and gyroscopes on a sailplane		
Oscar Castro Ruiz					

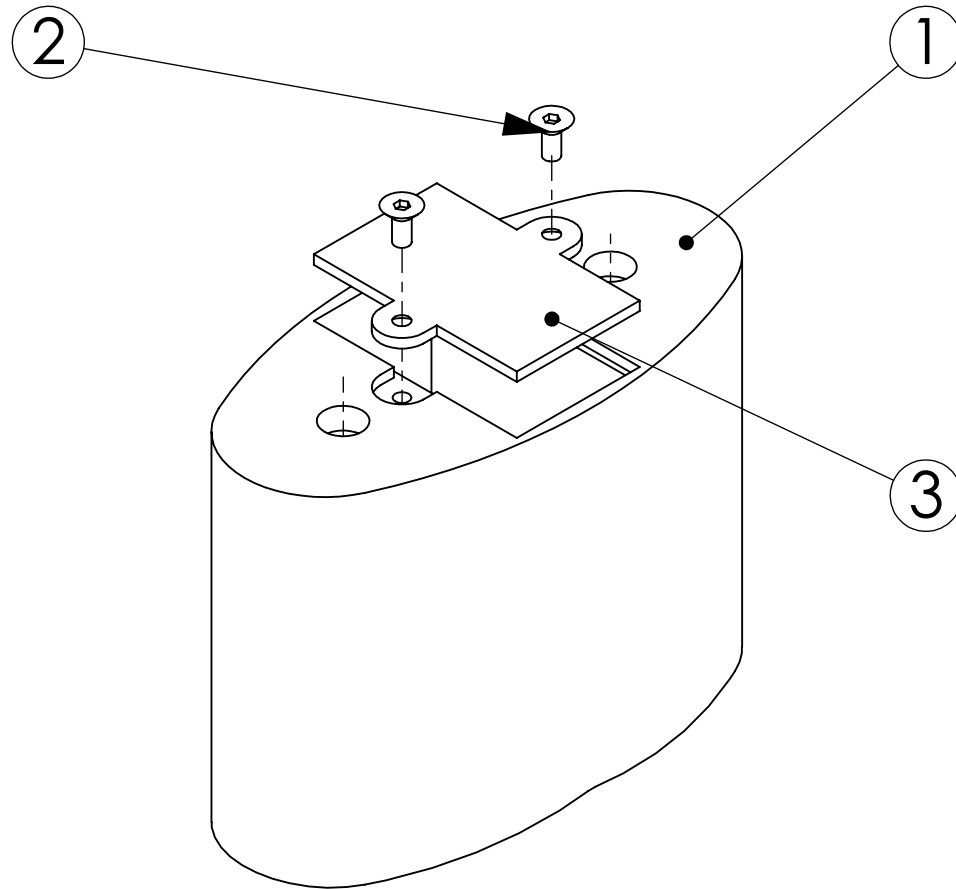
②




③

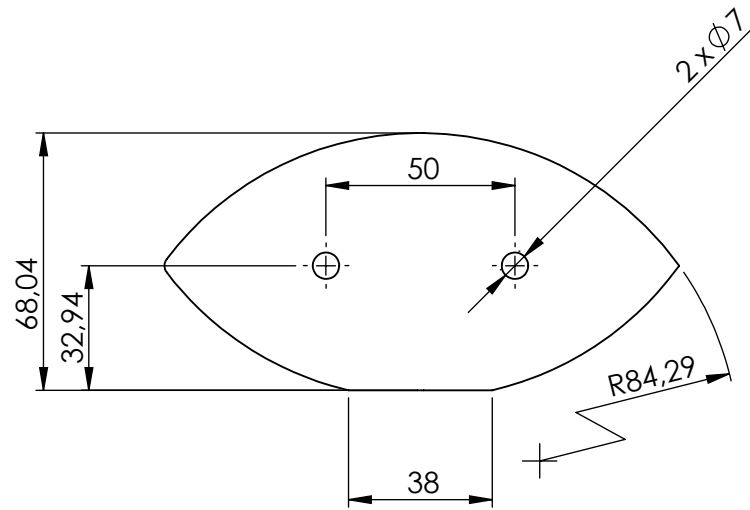
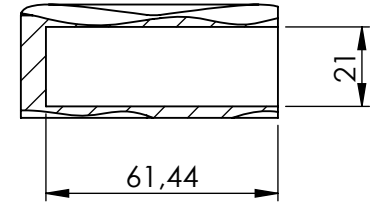
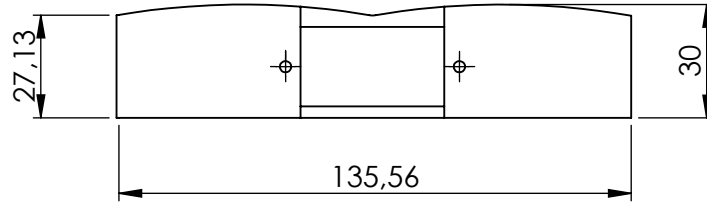
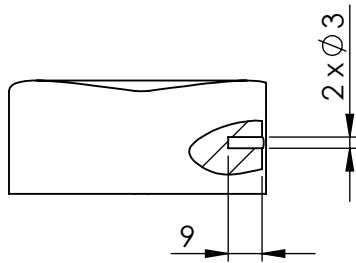



Quant/Mark	Name	Scale	Material:	Directive	Size
2/3	Cover's screw	5:1	Steel	DIN 7991	$\phi 6 \times 6$
1/2	Cover	2:1	ABS	-	38 x 36 x 2
	Vertical disposition for x-IMU	ETSEIAT		TFG	
June 2015			Design of a bench to allocate accelerometers and gyroscopes on a sailplane		
Oscar Castro Ruiz					



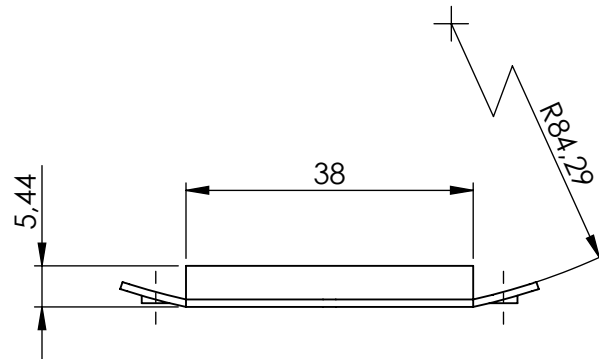
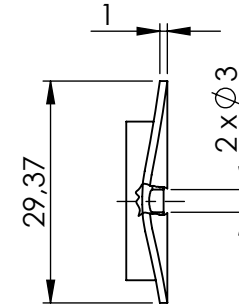
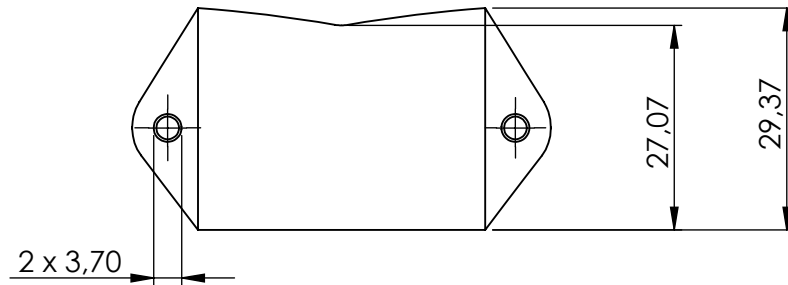
2	Cover's screw	3	Steel	DIN 7991	Ø 6 x 6
1	Cover	2	ABS	-	38 x 36 x 2
1	x-IMU vertical	1	Wood	-	87 x 43 x 64
Quant	Name	Mark	Material	Directive	Size
	Vertical disposition for x-IMU			TFG	
June 2015			Design of a bench to allocate accelerometers and gyroscopes on a sailplane		
Oscar Castro Ruiz					


①

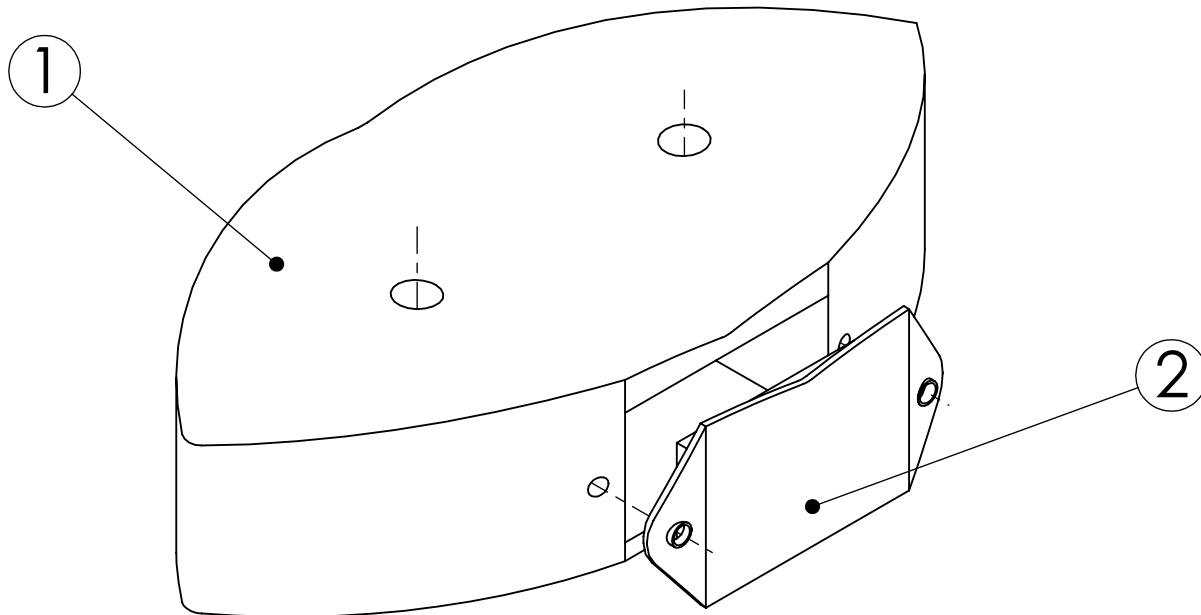



Quant/Mark	Name	Scale	Material:	Directive	Size
1/1	x-IMU horizontal	1:2	ABS	-	136 x 30 x 69
	Horizontal disposition for x-IMU	ETSEIAT		TFG	
June 2015			Design of a bench to allocate accelerometers and gyroscopes on a sailplane		
Oscar Castro Ruiz					

②

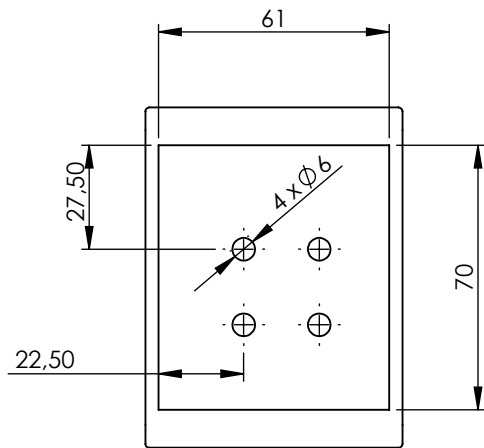
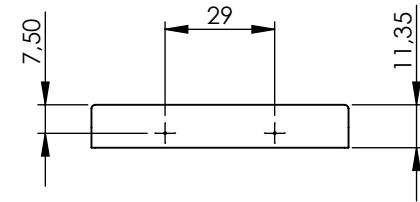
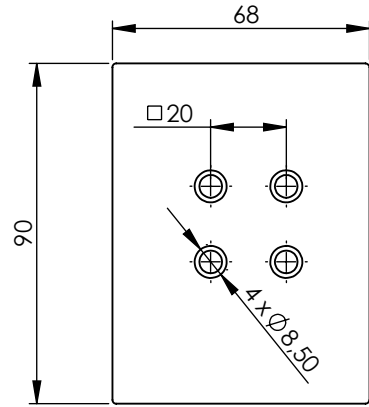


Quant/Mark	Name	Scale	Material	Directive	Size
1/2	Cover	1:1	ABS	-	56 x 30 x 6
	Horizontal disposition for x-IMU	ETSEIAT		TFG	
June 2015			Design of a bench to allocate accelerometers and gyroscopes on a sailplane		
Oscar Castro Ruiz					

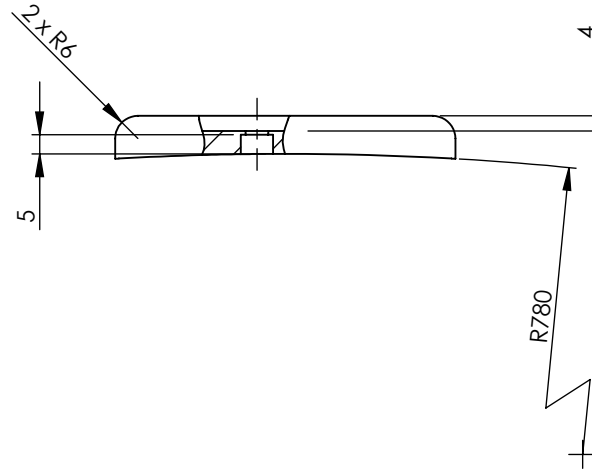
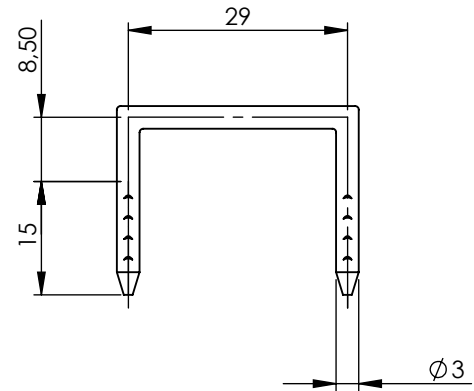



1	Cover	2	ABS	-	56 x 30 x 6
1	x-IMU horizontal	1	ABS	-	136 x 30 x 69
Quant	Name	Mark	Material	Directive	Size
	Vertical disposition for x-IMU			TFG	
June 2015			Design of a bench to allocate accelerometers and gyroscopes on a sailplane		
Oscar Castro Ruiz					

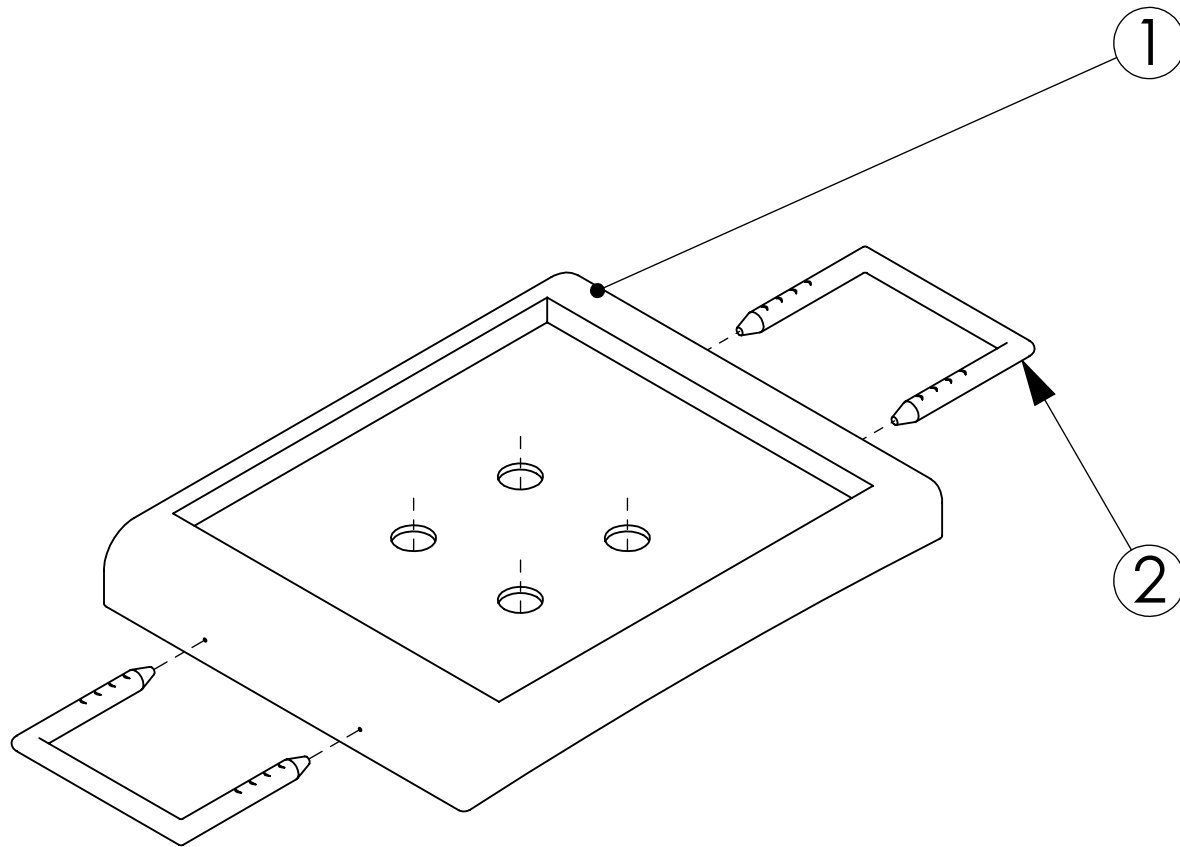
①




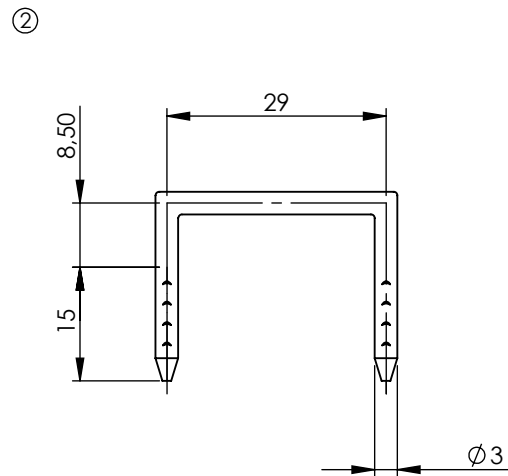
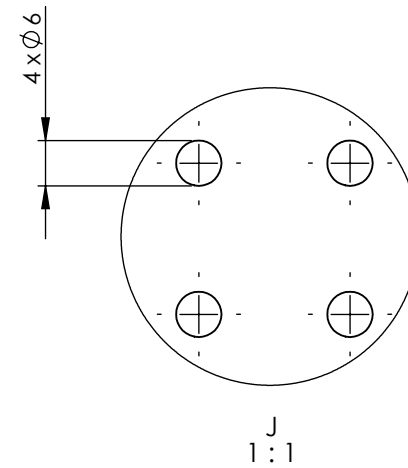
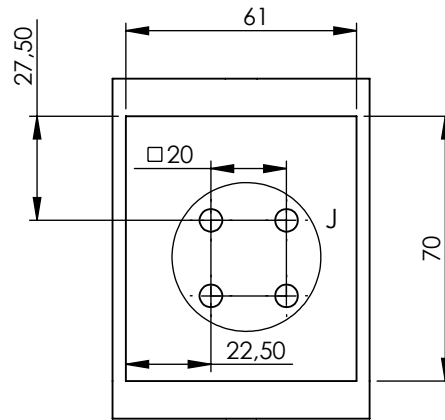
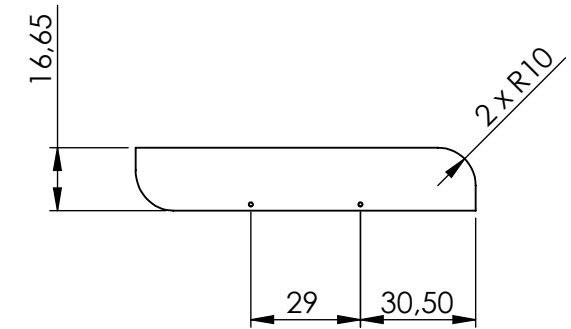
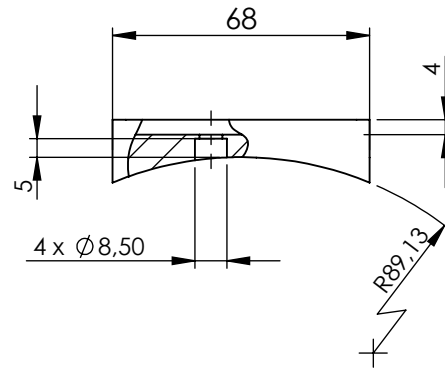
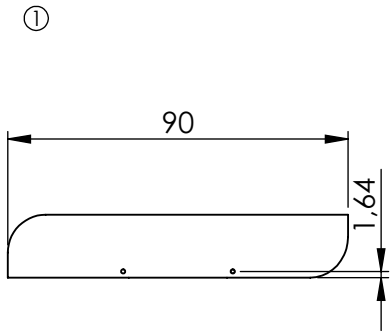
②




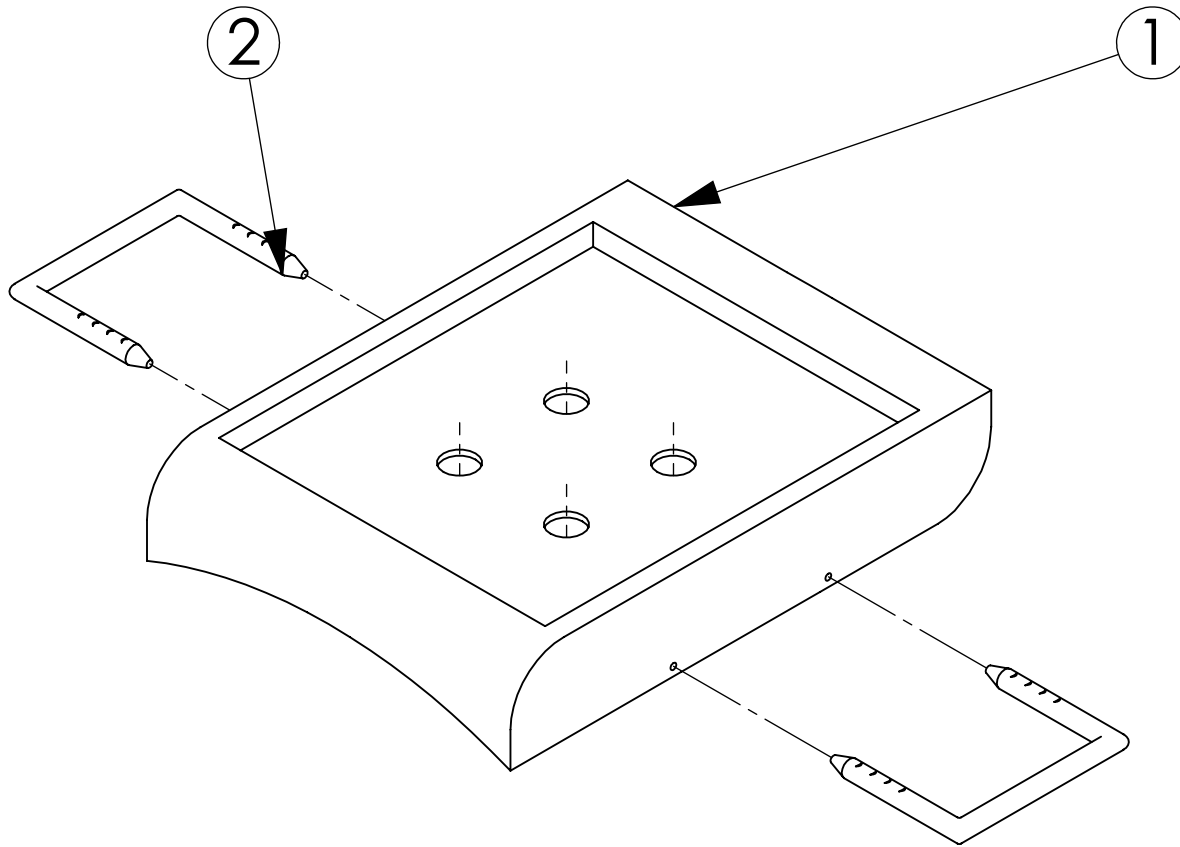
Quant/Mark	Name	Scale	Material:	Directive	Size
2/2	Ribbon attachment	1:1	Steel	-	33 x 25 x 3
1/1	Wing tip attach.	1:2	Wood	-	90 x 68 x 12
	MSR255 wing tip attachment	ETSEIAT		TFG	
June 2015			Design of a bench to allocate accelerometers and gyroscopes on a sailplane		
Oscar Castro Ruiz					




2	Ribbon attachment	2	Steel	-	33 x 25 x 3
1	Wing tip attach.	1	Wood	-	90 x 68 x 12
Quant	Name	Mark	Material	Directive	Size
	MSR255 wing tip attachment			TFG	
June 2015			Design of a bench to allocate accelerometers and gyroscopes on a sailplane		
Oscar Castro Ruiz					



Quant/Mark	Name	Scale	Material:	Directive	Size
2/2	Ribbon attachment	1:1	Steel	-	33 x 25 x 3
1/1	Fuselage attach.	1:2	Wood	-	78 x 90 x 17
	MSR 255 fuselage attachment	ETSEIAT		TFG	
June 2015			Design of a bench to allocate accelerometers and gyroscopes on a sailplane		
Oscar Castro Ruiz					



2	Ribbon attachment	2	Steel	-	33 x 25 x 3
1	Fuselage attach	1	Wood	-	78 x 90 x 17
Quant	Name	Mark	Material	Directive	Size
	MSR255 wing tip attachment			TFG	
June 2015			Design of a bench to allocate accelerometers and gyroscopes on a sailplane		
Oscar Castro Ruiz					