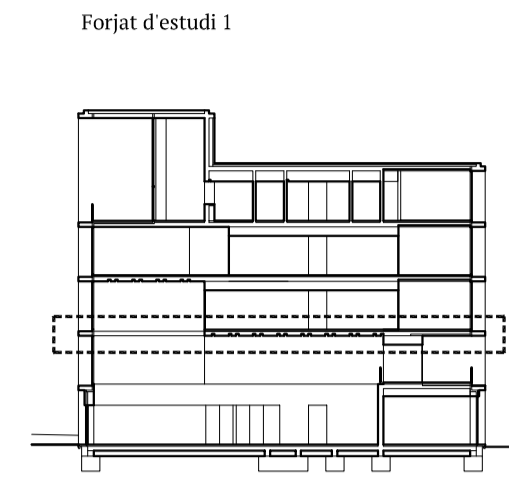
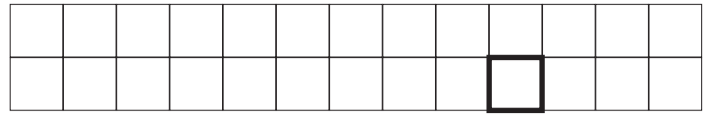
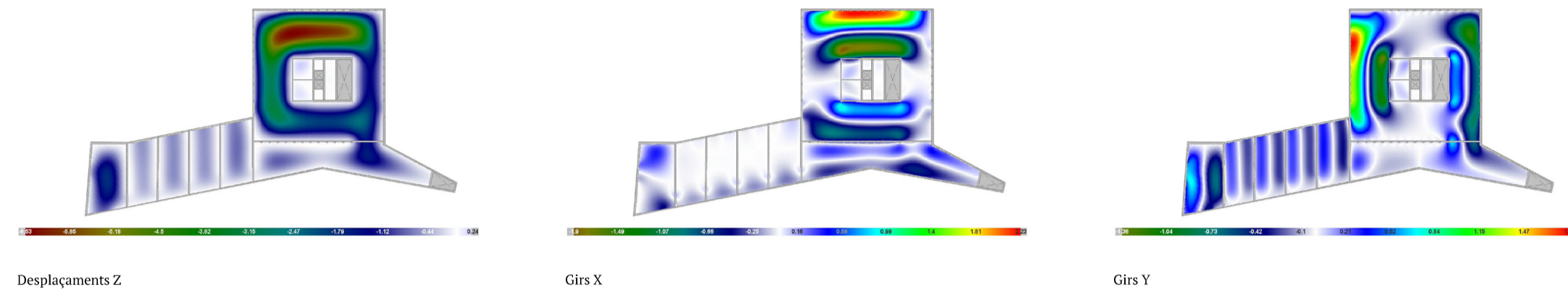


Ordenació interior de pati d'illa i ampliació de l'escola d'Art i Superior de Disseny a Olot

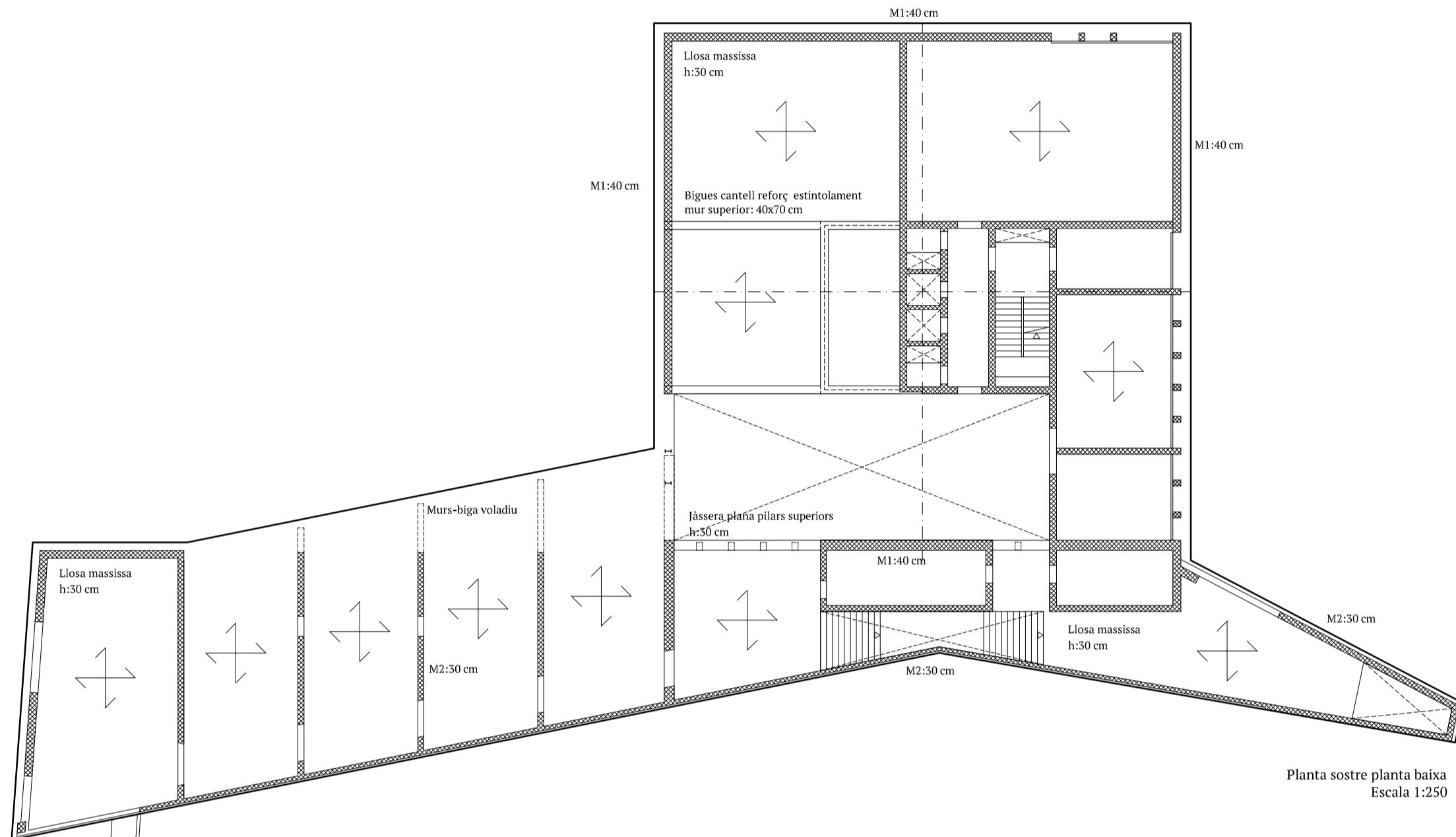
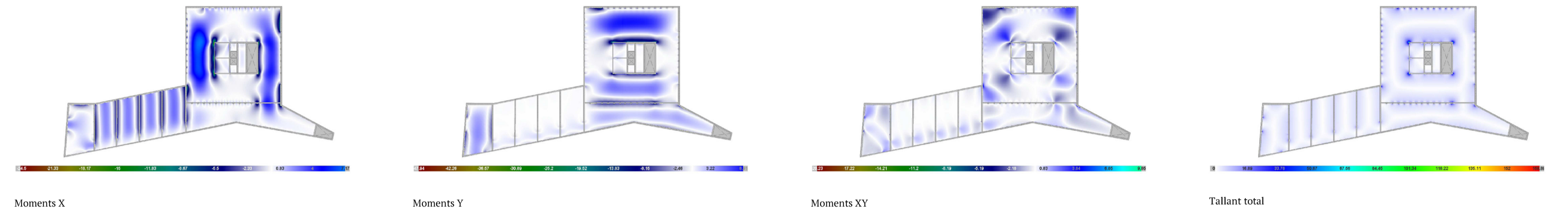
J. Bellmunt - J. Alentorn - J.Mª Viader - R. Vilalta | Joel Padrosa | Juliol 2016



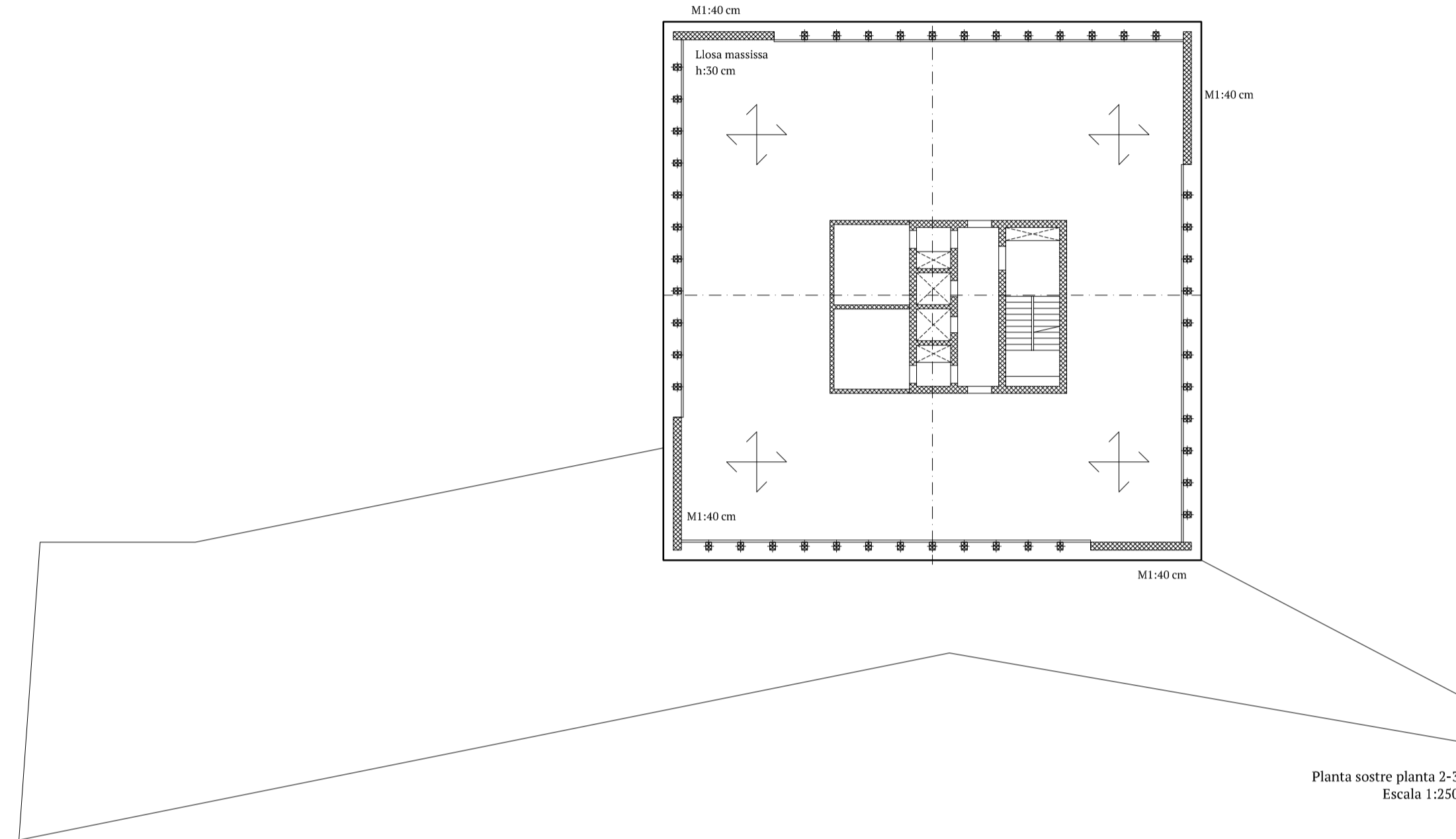
Forjat sostre planta 2
Deformacions



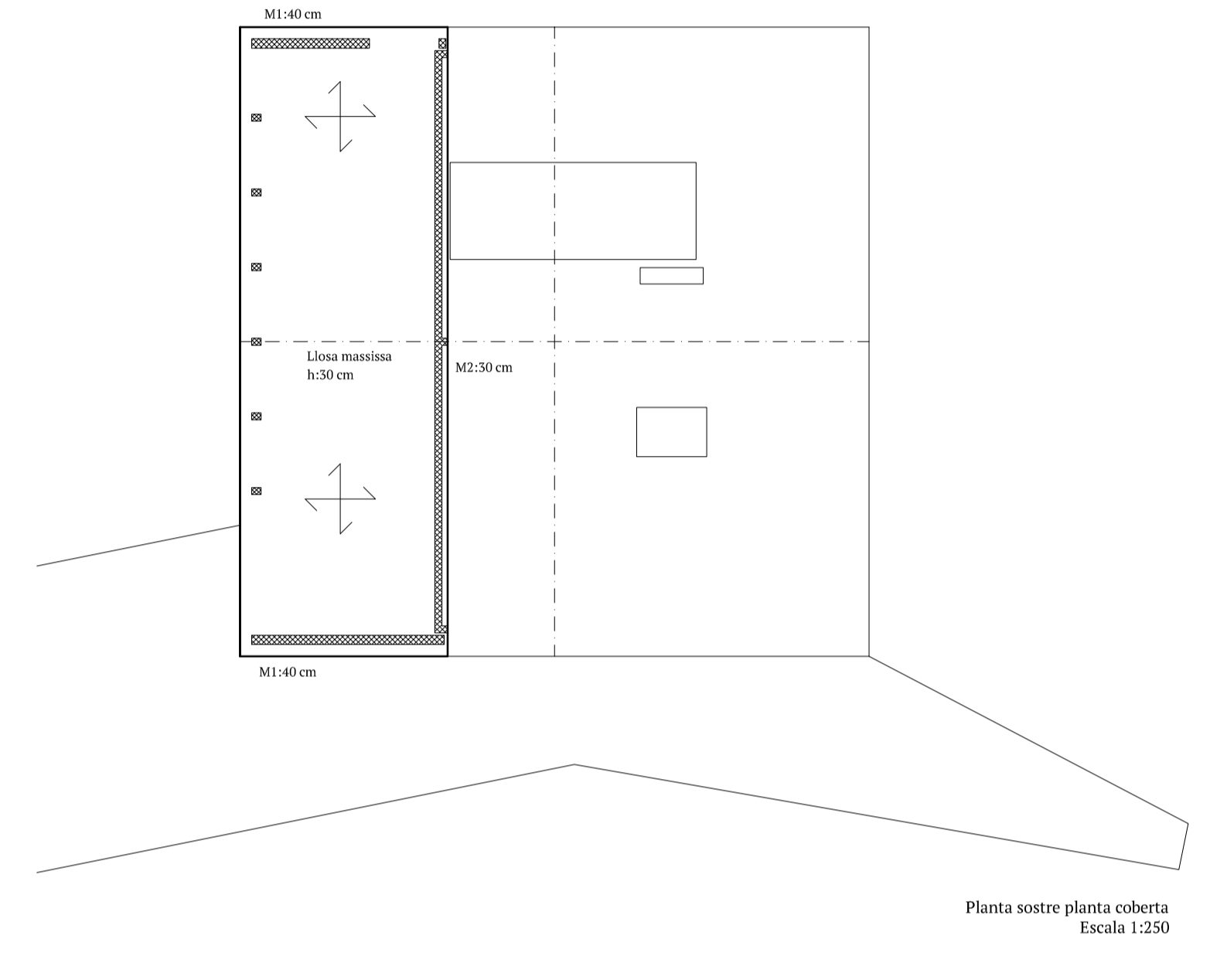
Forjat sostre planta 2
Esforços



Planta sostre planta baixa
Escala 1:250

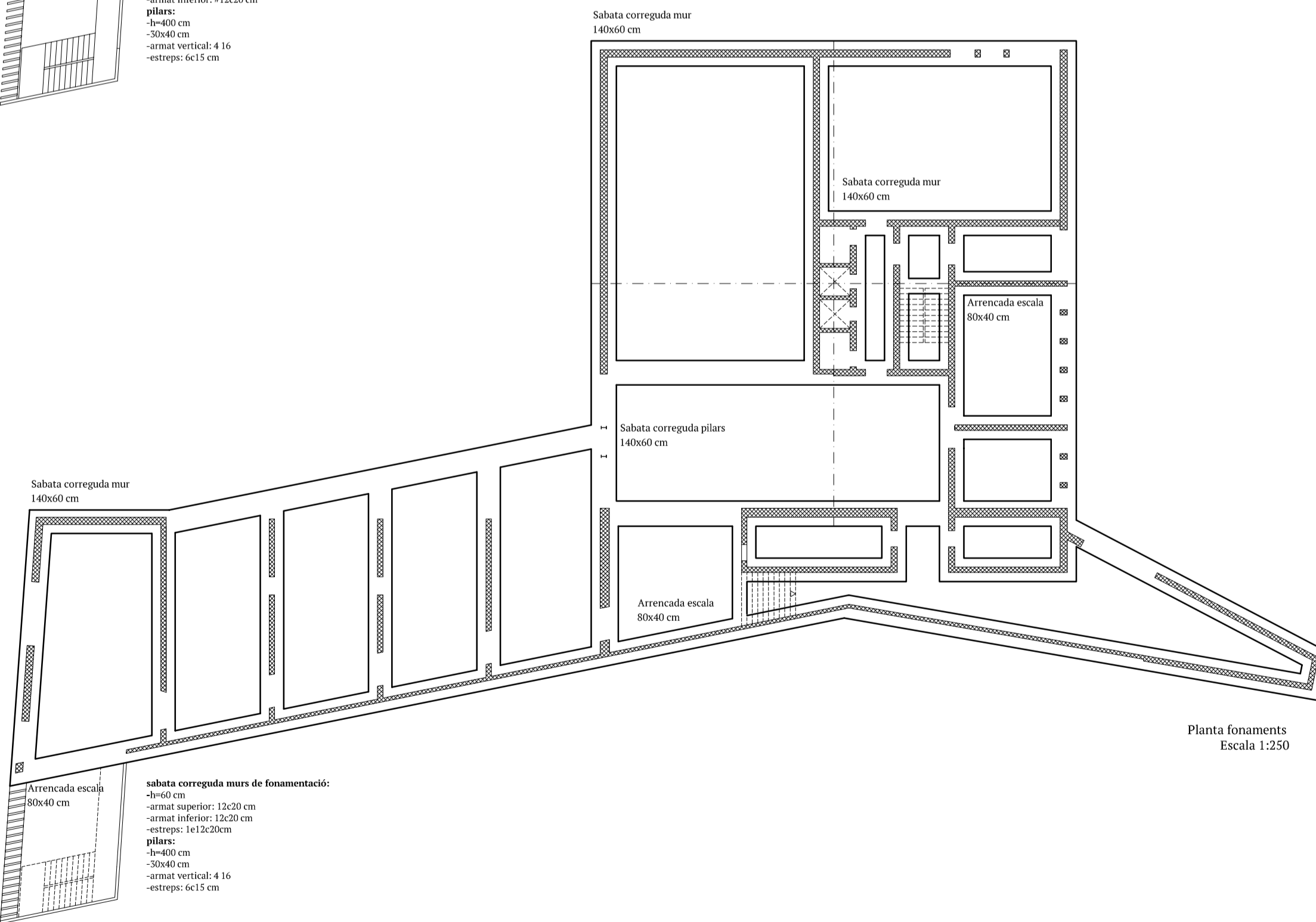


Planta sostre planta 2-5
Escala 1:250

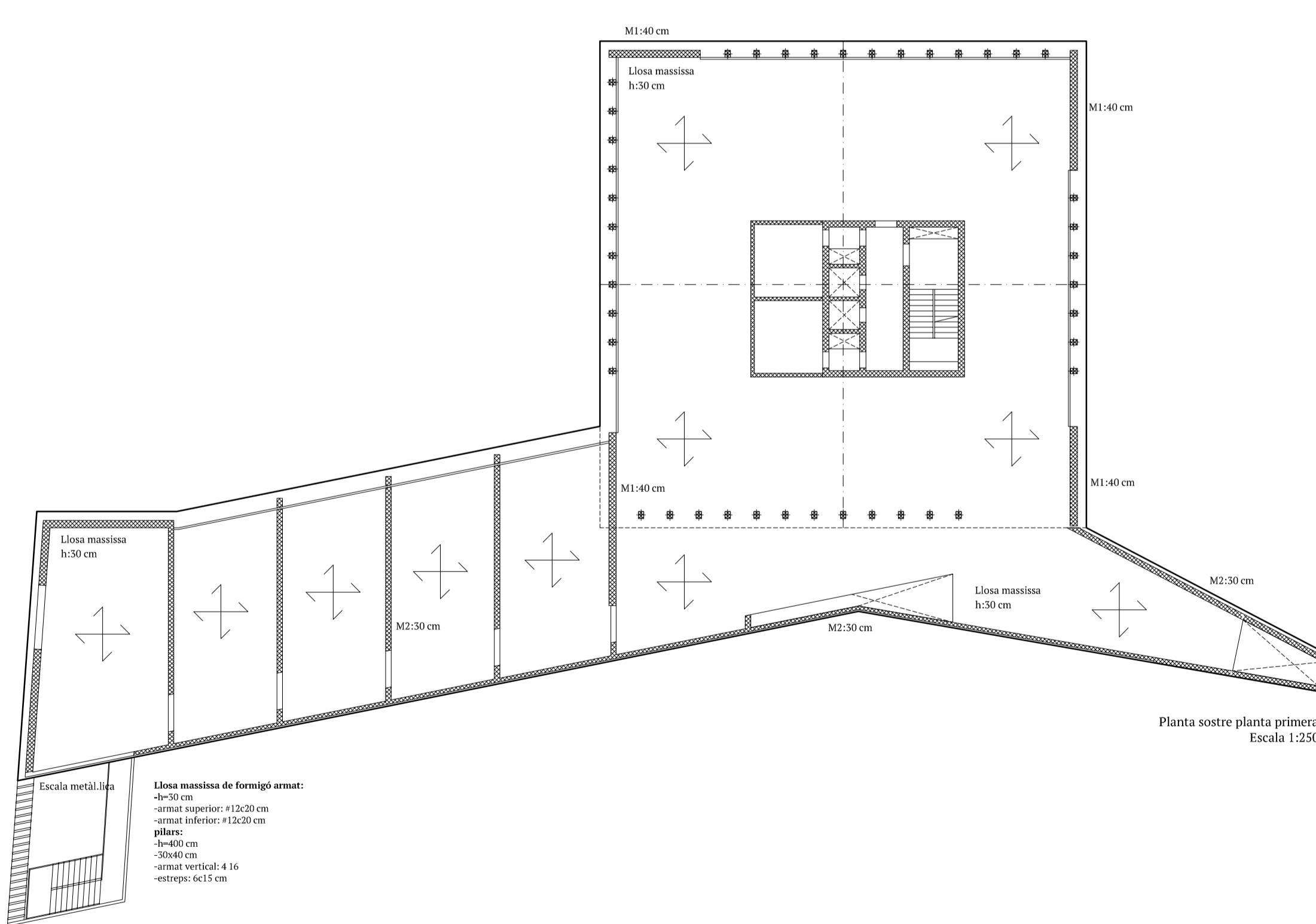


Planta sostre planta coberta
Escala 1:250

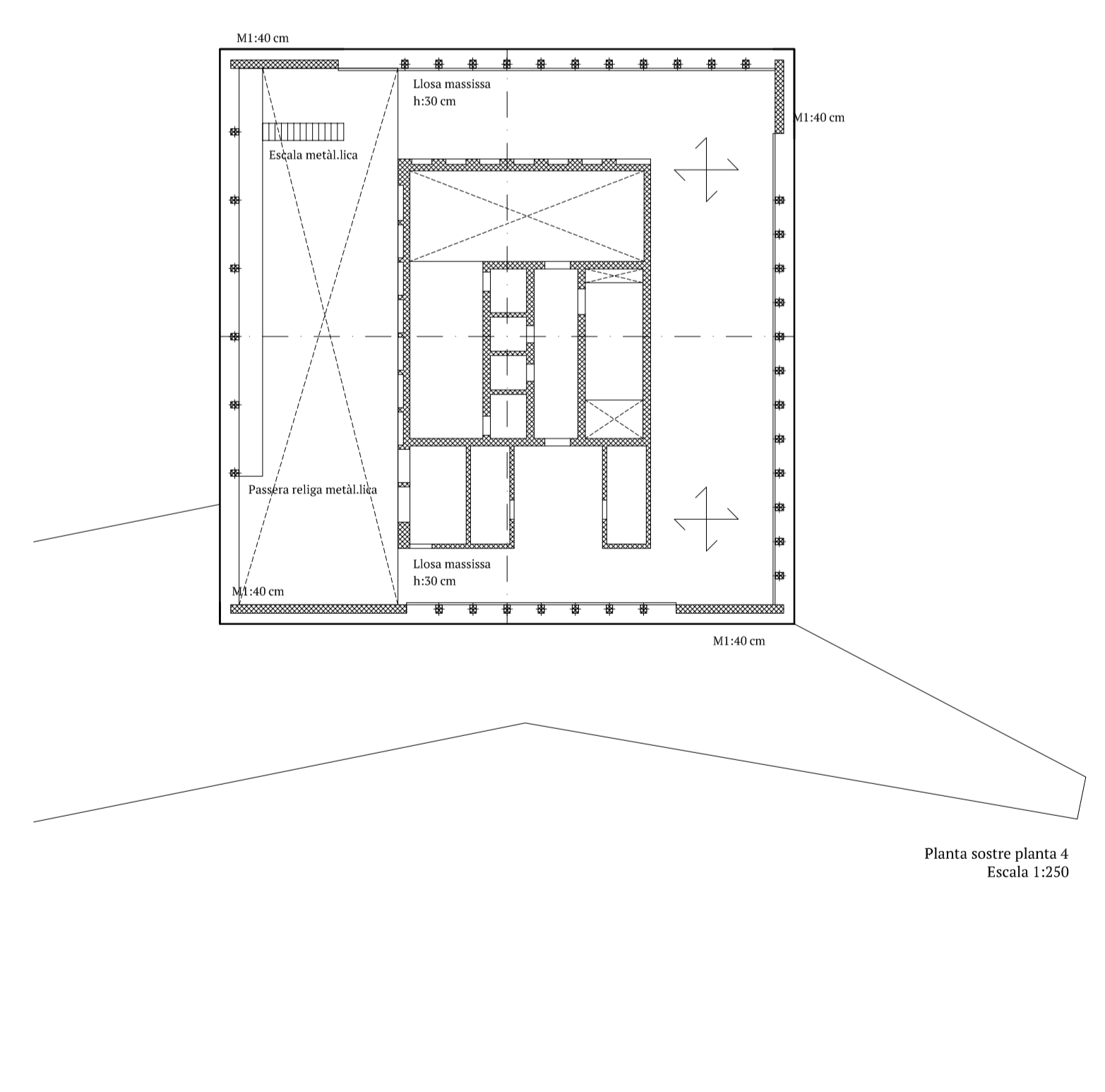
Llosa massissa de formigó armat:
-h:30 cm
-armat superior: +12x20 cm
-armat inferior: +12x20 cm
pilars:
-h:40 cm
-50x40 cm
-armat vertical: 4 16
-estrep: 6x15 cm



Planta fonaments
Escala 1:250



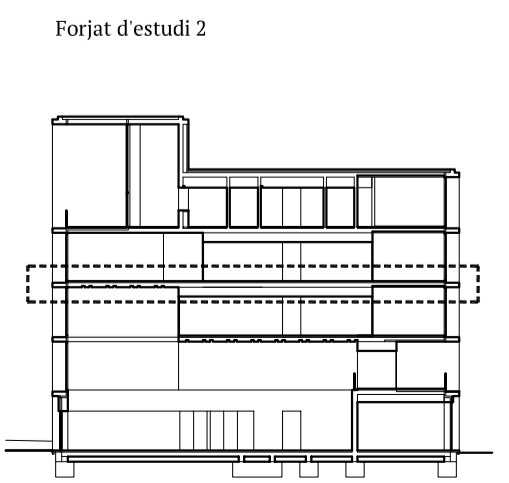
Planta sostre planta primera
Escala 1:250



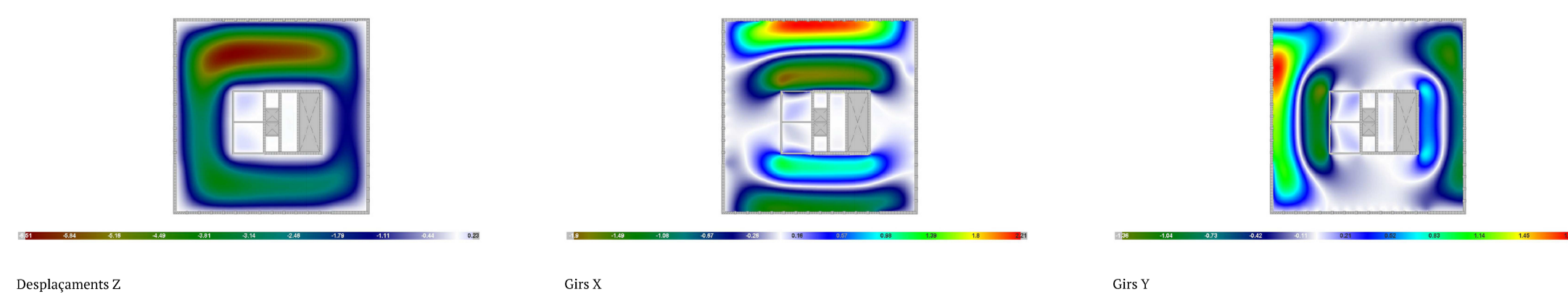
Planta sostre planta 4
Escala 1:250

sabata corregada murs de fonamentació:
-h:60 cm
-armat superior: 12x20 cm
-armat inferior: 12x20 cm
-estrep: 1x12x20 cm
pilars:
-h:40 cm
-50x40 cm
-armat vertical: 4 16
-estrep: 6x15 cm

Llosa massissa de formigó armat:
-h:30 cm
-armat superior: +12x20 cm
-armat inferior: +12x20 cm
pilars:
-h:40 cm
-50x40 cm
-armat vertical: 4 16
-estrep: 6x15 cm



Forjat sostre planta tipus 3-4
Deformacions



Forjat sostre planta tipus 3-4
Esforços

