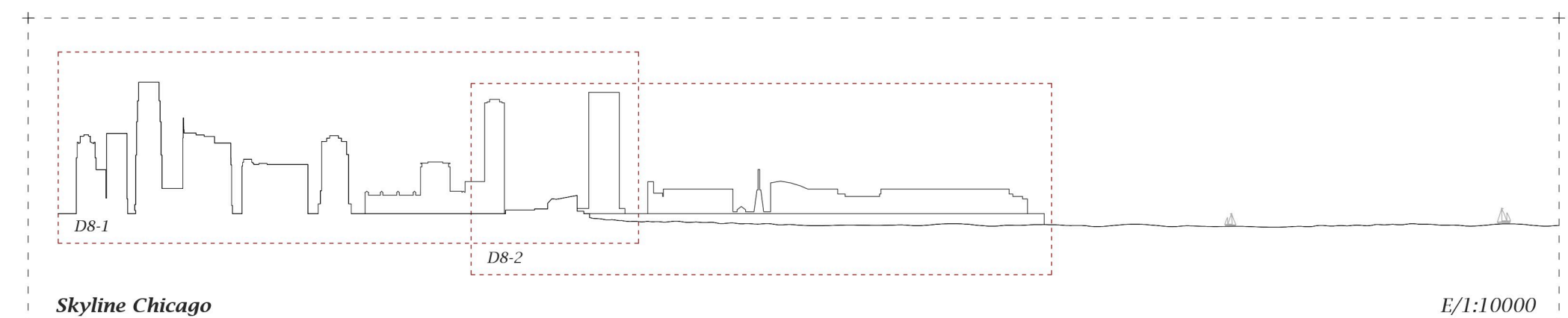
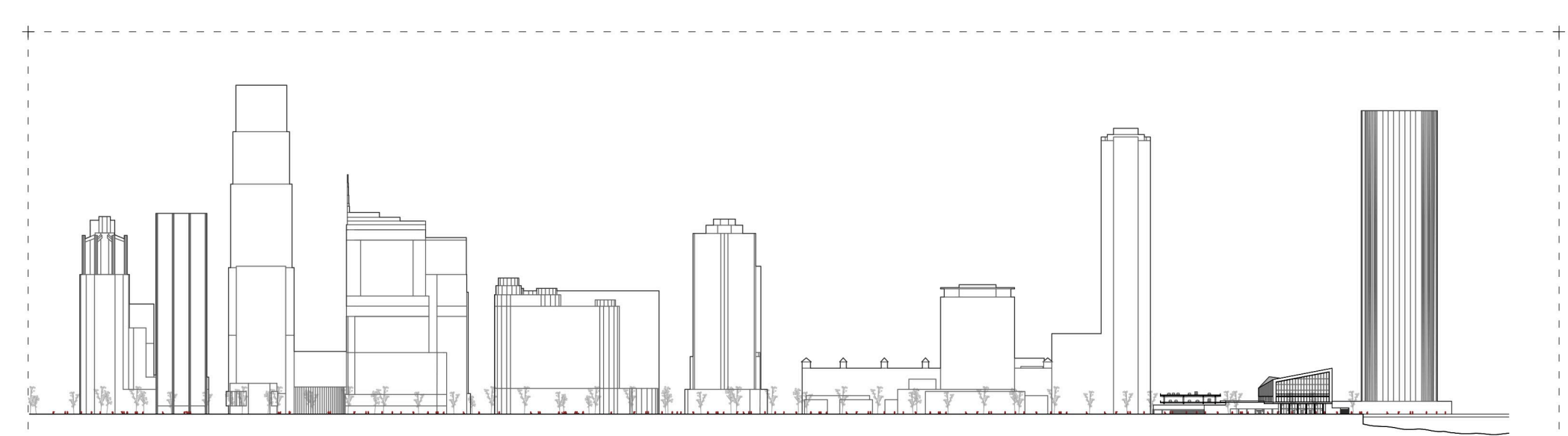


Axonometría general



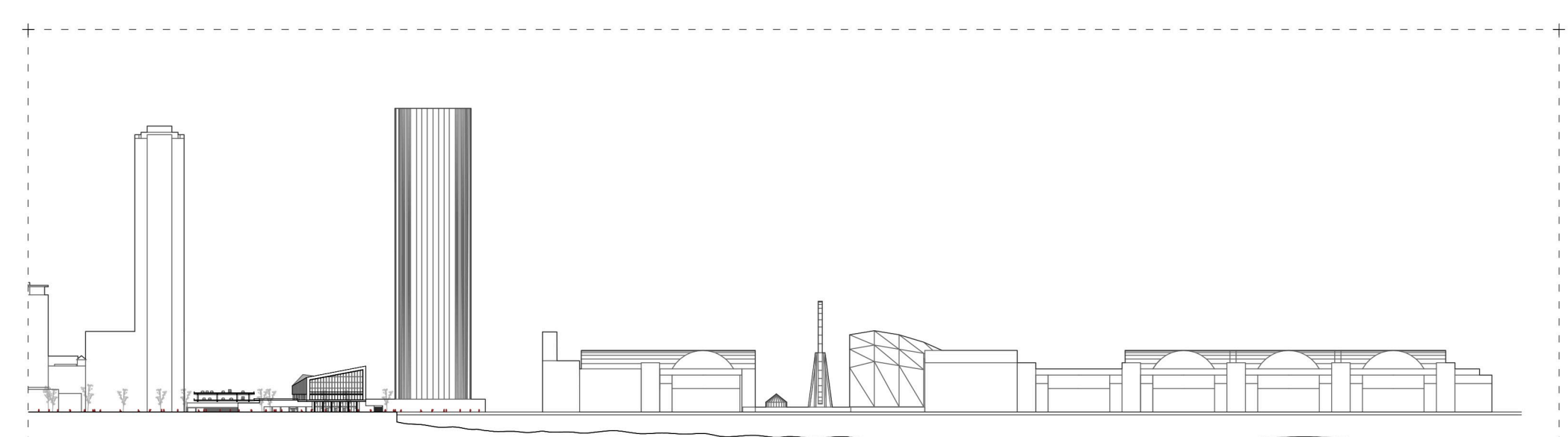
Skyline Chicago

E/1:10000



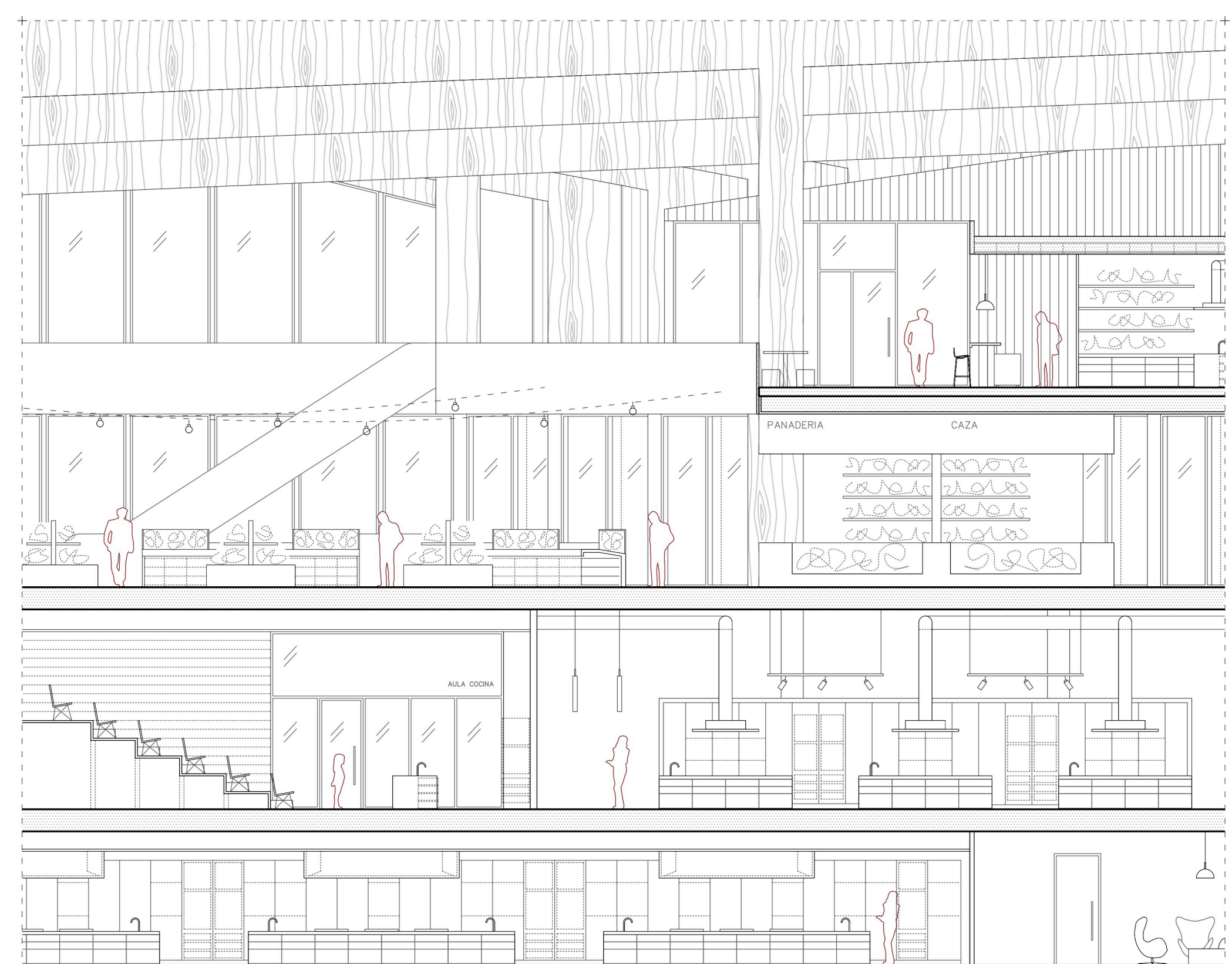
D8-1 Alzado Norte

E/1:4000

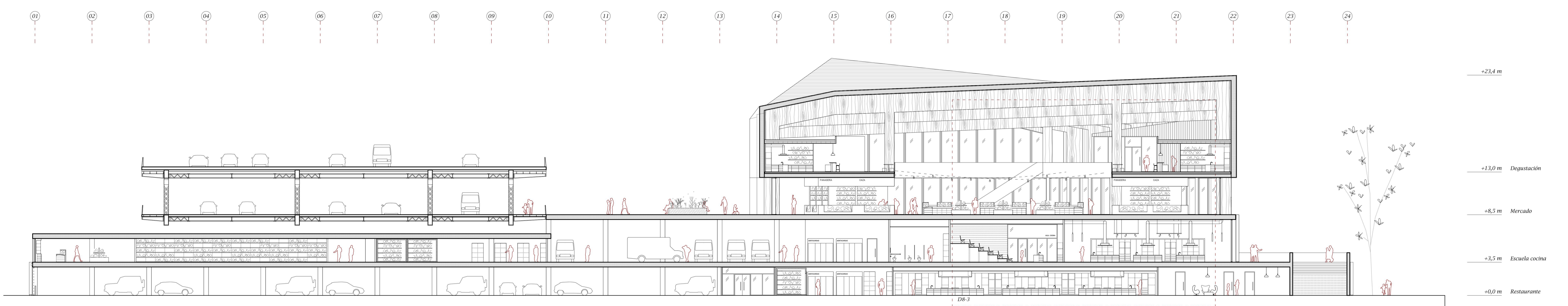


D8-2 Alzado Norte

E/1:4000



D8-3



Sección transversal E/1:200

0 2 4 5 6 8 10 metros

+23.4 m

+13.0 m Degustación

+8.5 m Mercado

+3.5 m Escuela cocina

+0.0 m Restaurante

D8-3