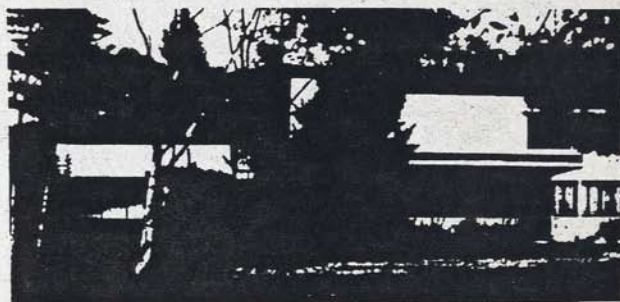
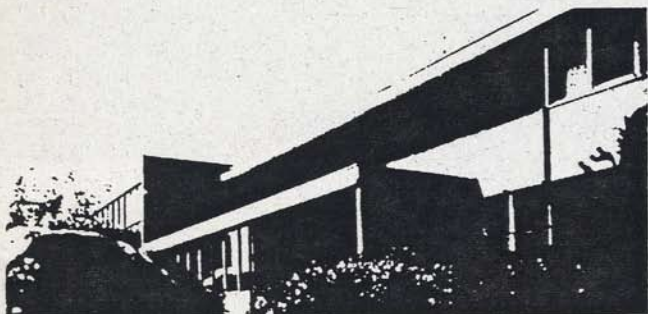
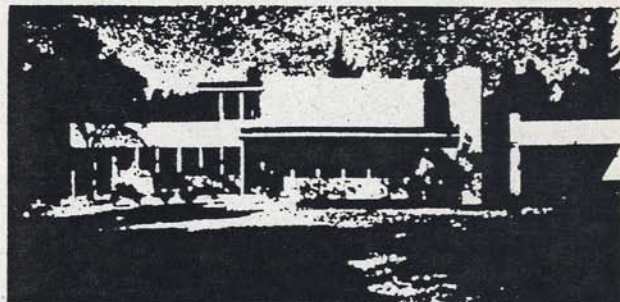


THE WORK OF ARCHITECT
Richard Neutra

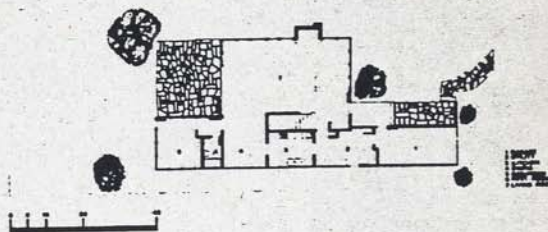
PLYWOOD MODEL HOUSE

LOS ANGELES CALIFORNIA
1936

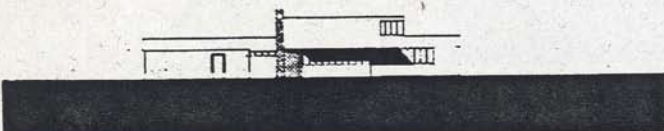


SOUTH ELEVATION

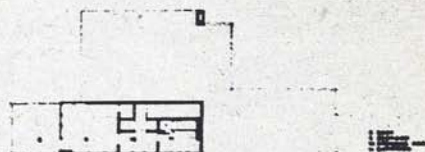
NORTH ELEVATION

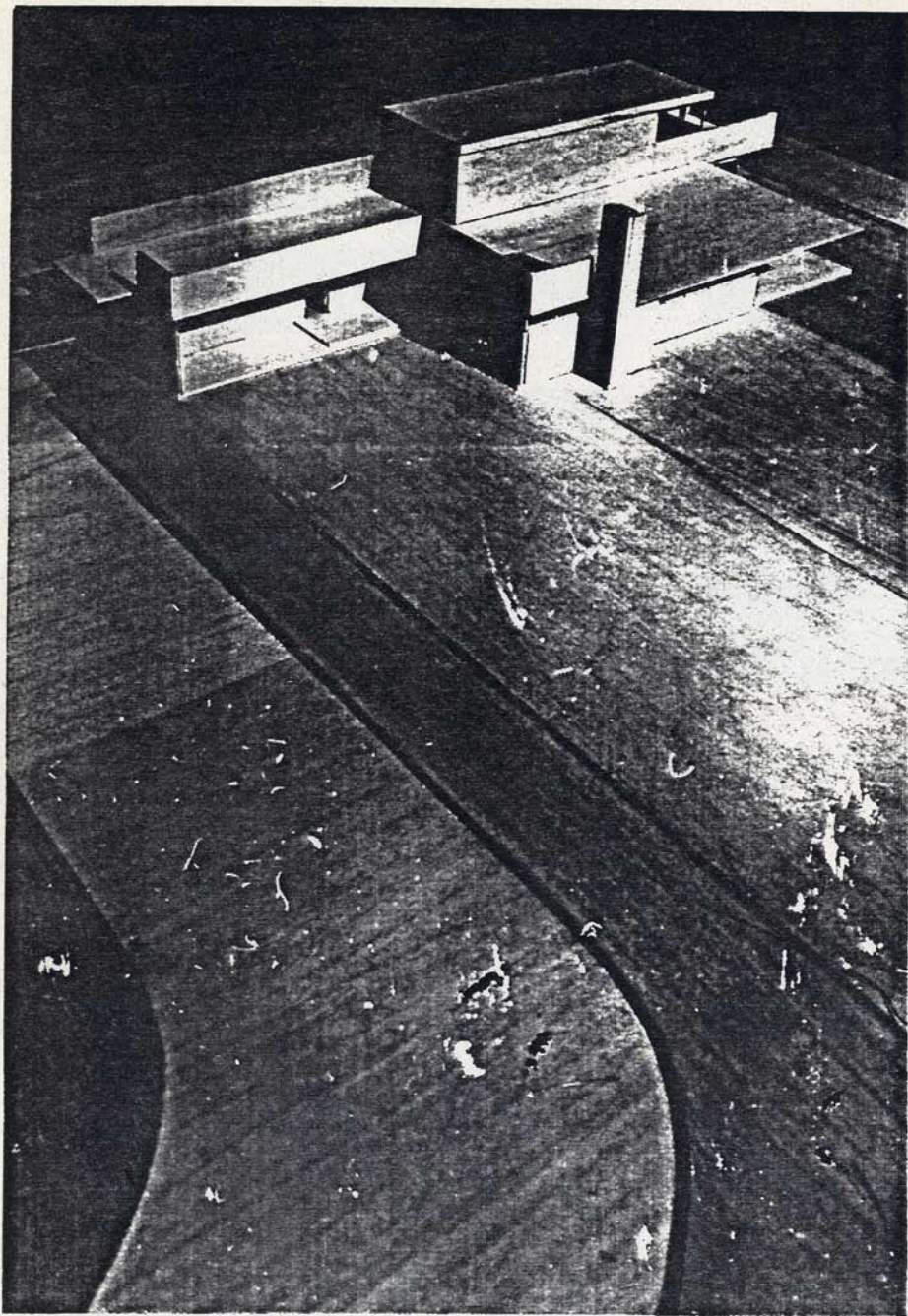


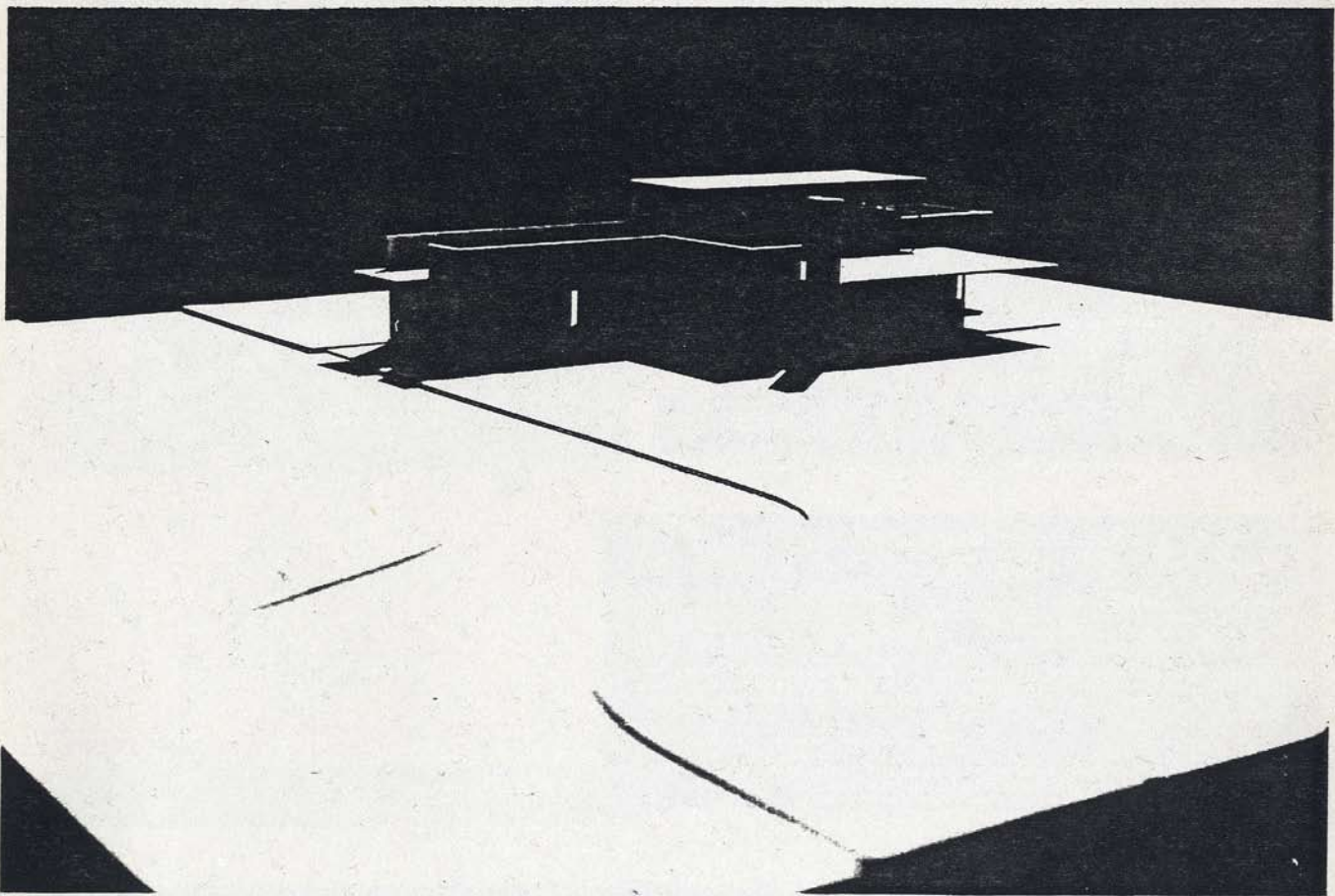
SITE PLAN



WEST ELEVATION









EAST ELEVATION



SECTION

SECTION

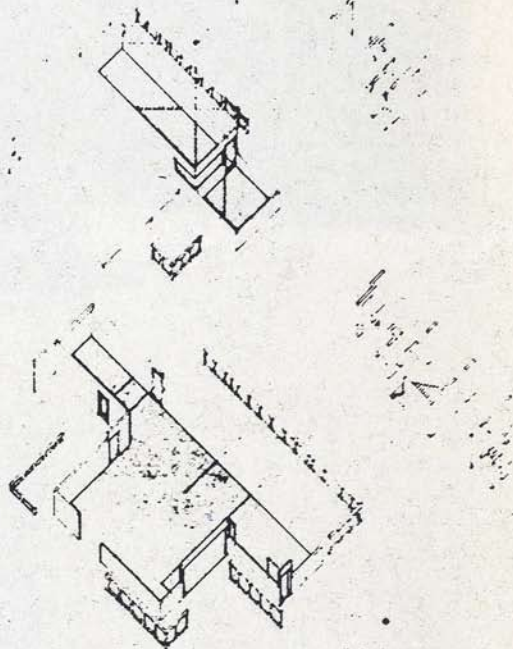
Richard Neutra Case Study Project

by
Manar Algham and Mark Olson

Richard Neutra designed the Plywood Model House in 1936. The house is located on 427 Beloit St. in the city of Los Angeles. It was one of almost twenty houses built by Neutra costing under \$5000. The house is finished inside and out with plywood. It is characterized by its generous use of windows, an open plan, and a skeleton chassis of standard members. The plan is notable for the relatively large area allotted to the living room, and the luxurious quality of the interiors due to this spaciousness.

Richard Neutra has long been concerned with the possibilities of prefabrication. His suggested use of prefabricated blocks based on diatomaceous earth appears as early as 1923. It employs the suspension principle, using central masts from which the double panel diatomaceous walls are suspended in tension. The Plywood Model House is based on Neutra's design, expressing the most advanced theories of prefabrication and mobility.

The house is constructed so that it can be easily transported to serve as a vacation place or as a permanent dwelling. It can be sold to someone who wishes to transport and re-erect it on a new site. Window layout was to fit several possible orientations. It was made feasible to place the house as a whole on vanquipped underpinnings, or foundation walls to suit moderate hill slopes. The transportability of the house reduced the threat of a frozen asset, and so better finishes and more comfortable installations than otherwise usual in such a small house became justified.



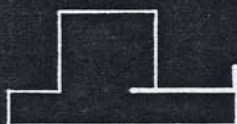
AXONOMETRIC DIAGRAM



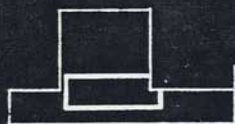
PROGRAM



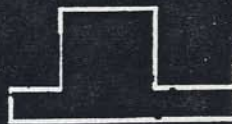
STRUCTURE



ENTRANCE



CIRCULATION



ENCLOSURE