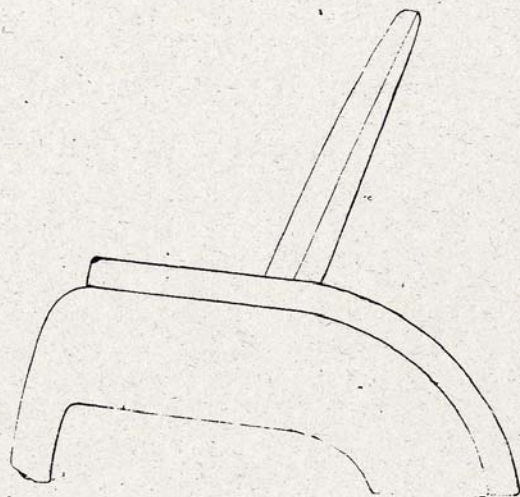




Sofà de Gran Repós amb seient i respalller inclinable en xapa d'acer , 1928-1930.



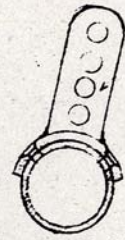
65 DP

47



Seccions de detall amb diferents posicions del respall.

COUPE EN



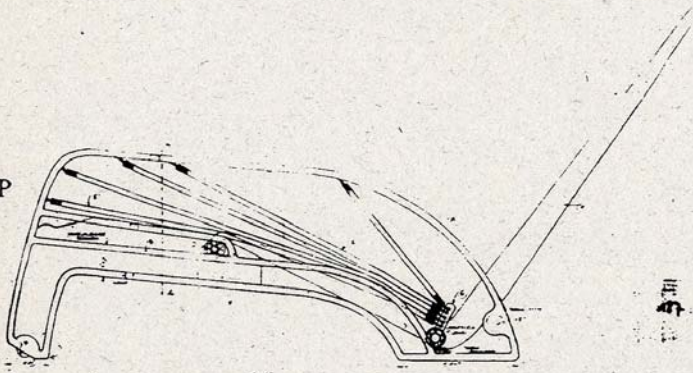
COUPE DE 45

APRÈS BRÈSSE

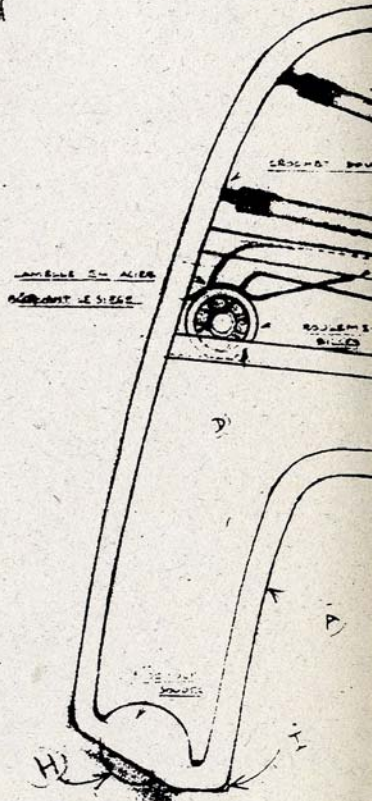
DETA. GRANDE JE DE LA PIÈCE

G

56 DP



H



043

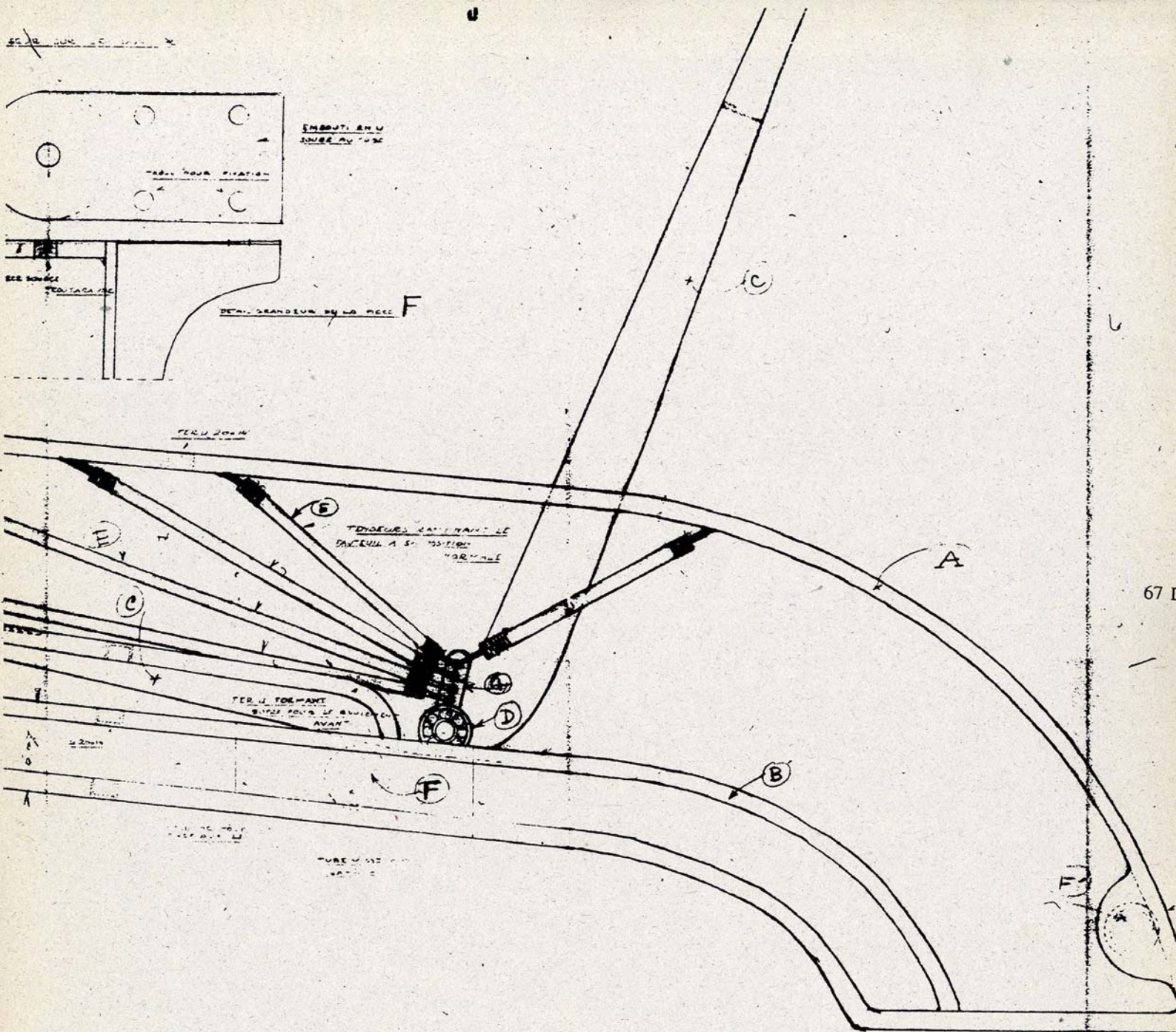
ARRIVÉE EN ALIER  
RÉGLANT LE SIÈGE

ARRIVÉE EN ALIER

ROULEMENTS

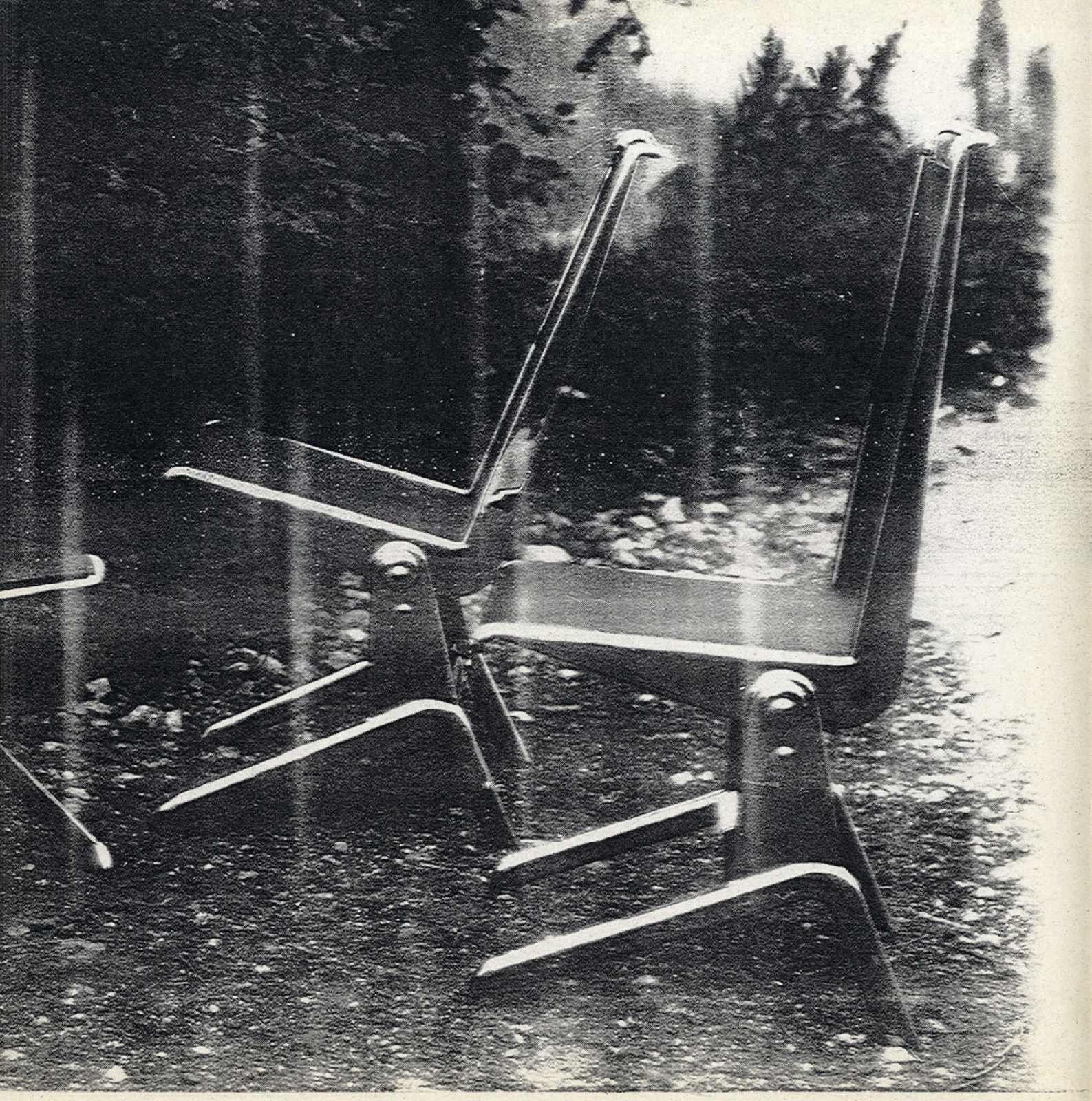
H  
V



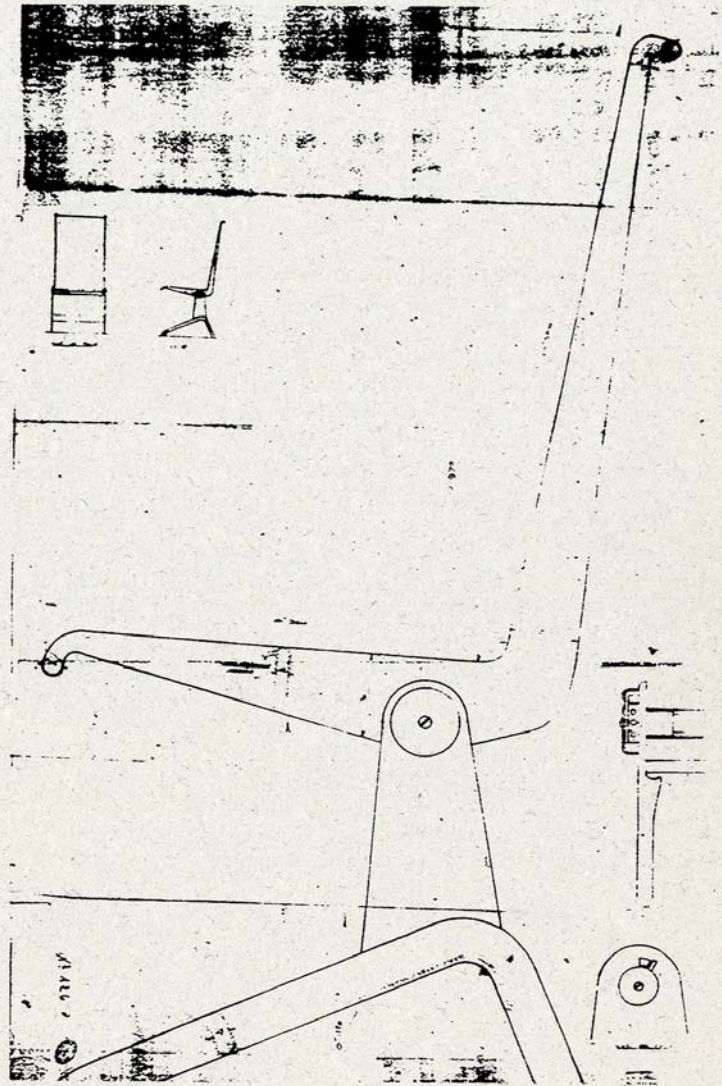


67 D











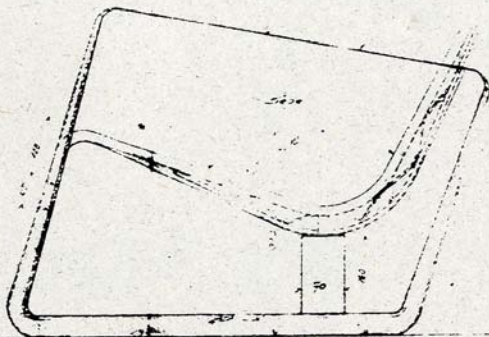


DP

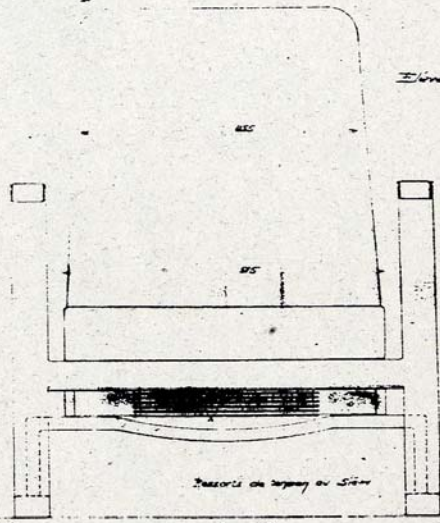
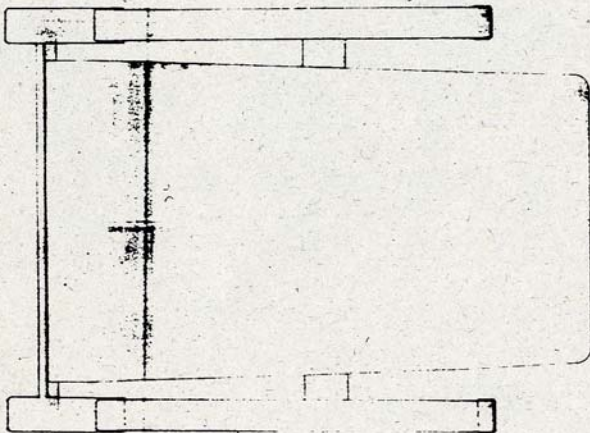


ATeliers JEAN PROUVE

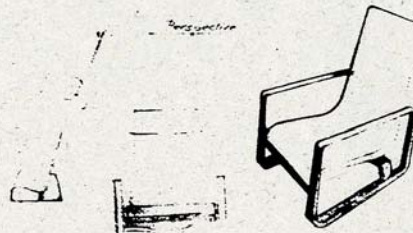
4177  
Fournil métallique



base de service au la corde



71 DP



197  
ATELIERS JEAN PROUVE

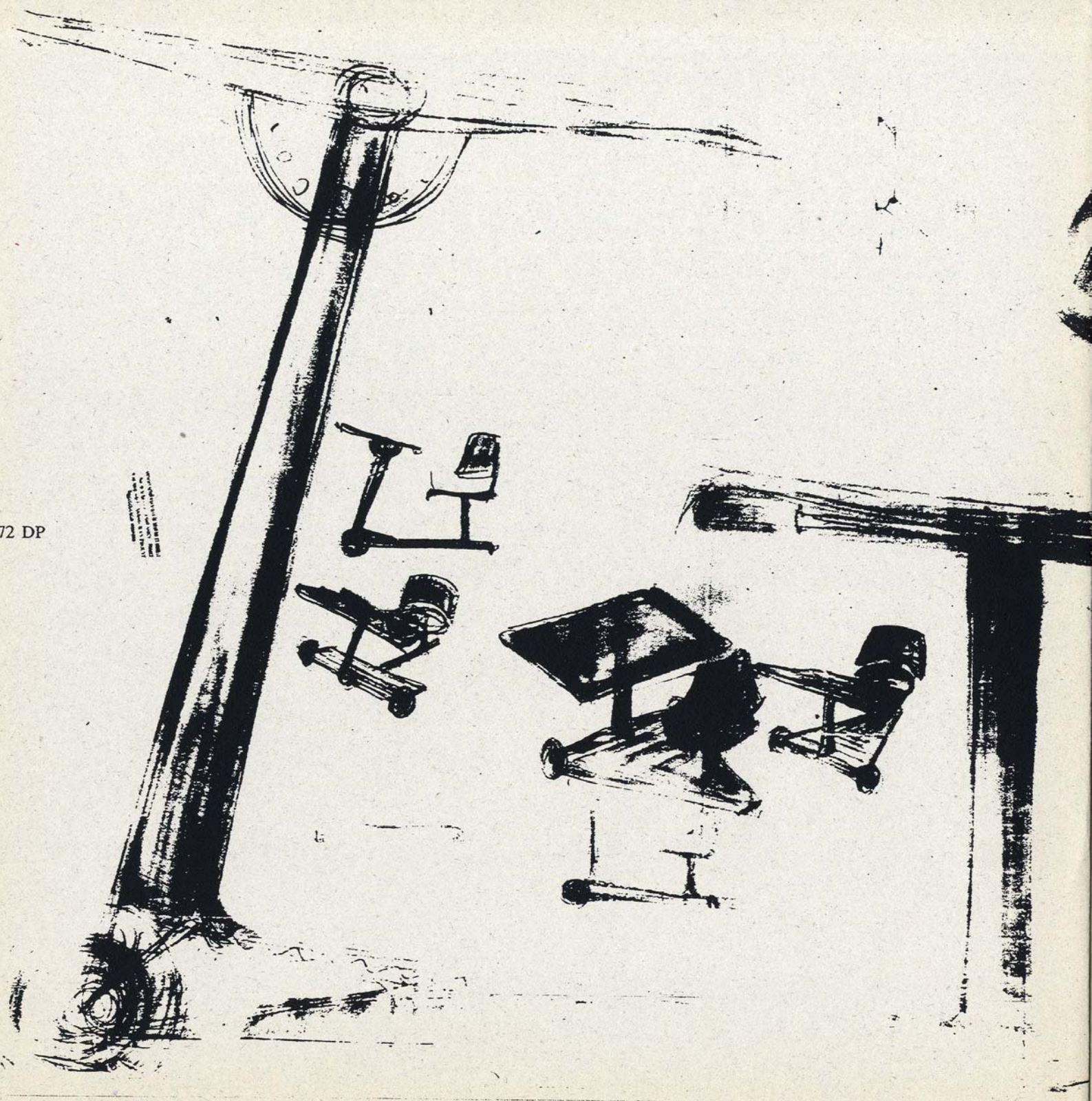
Fournil métallique

402



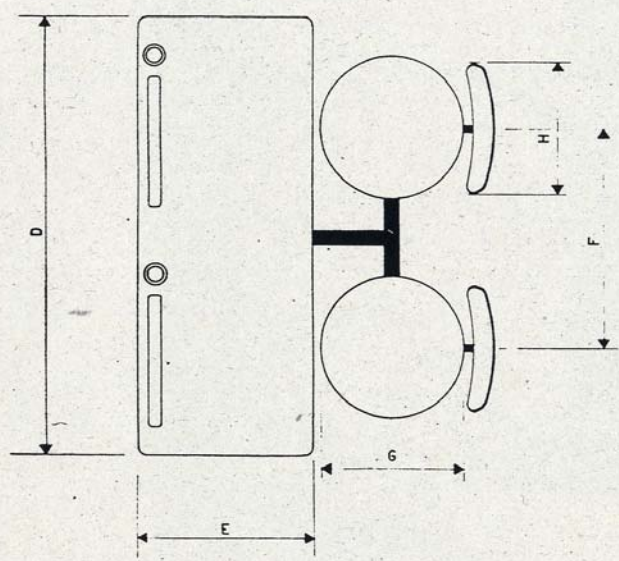
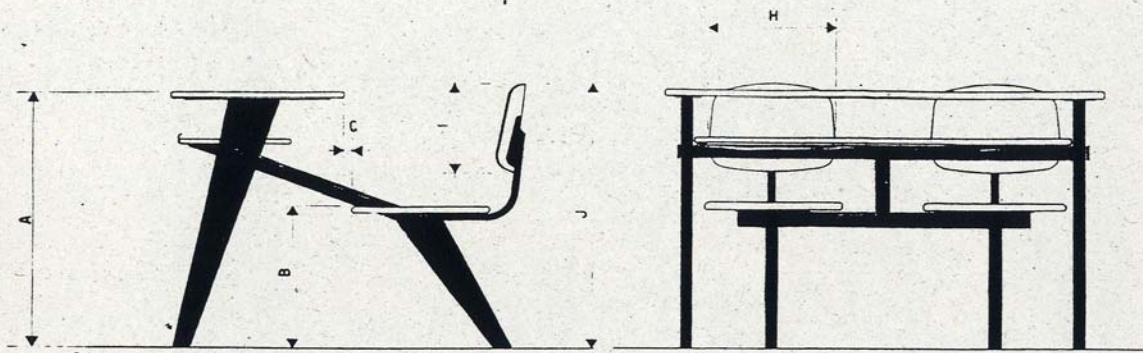
72 DP

ALL INFORMATION CONTAINED  
HEREIN IS UNCLASSIFIED  
DATE 08-14-2010 BY 60322 UCBAW





Pupitre escolar de dues places amb dimensions variables segons l'edat dels alumnes, anys 50.



A	600	650	700	750
B	340	370	400	430
C	9	18	35	40
DxE	400x1000	450x1100	450x1100	500x1200
F	500	550	550	600
G	320	320	320	320
HxI	320x200	320x200	320x200	320x200
J	630	690	760	820

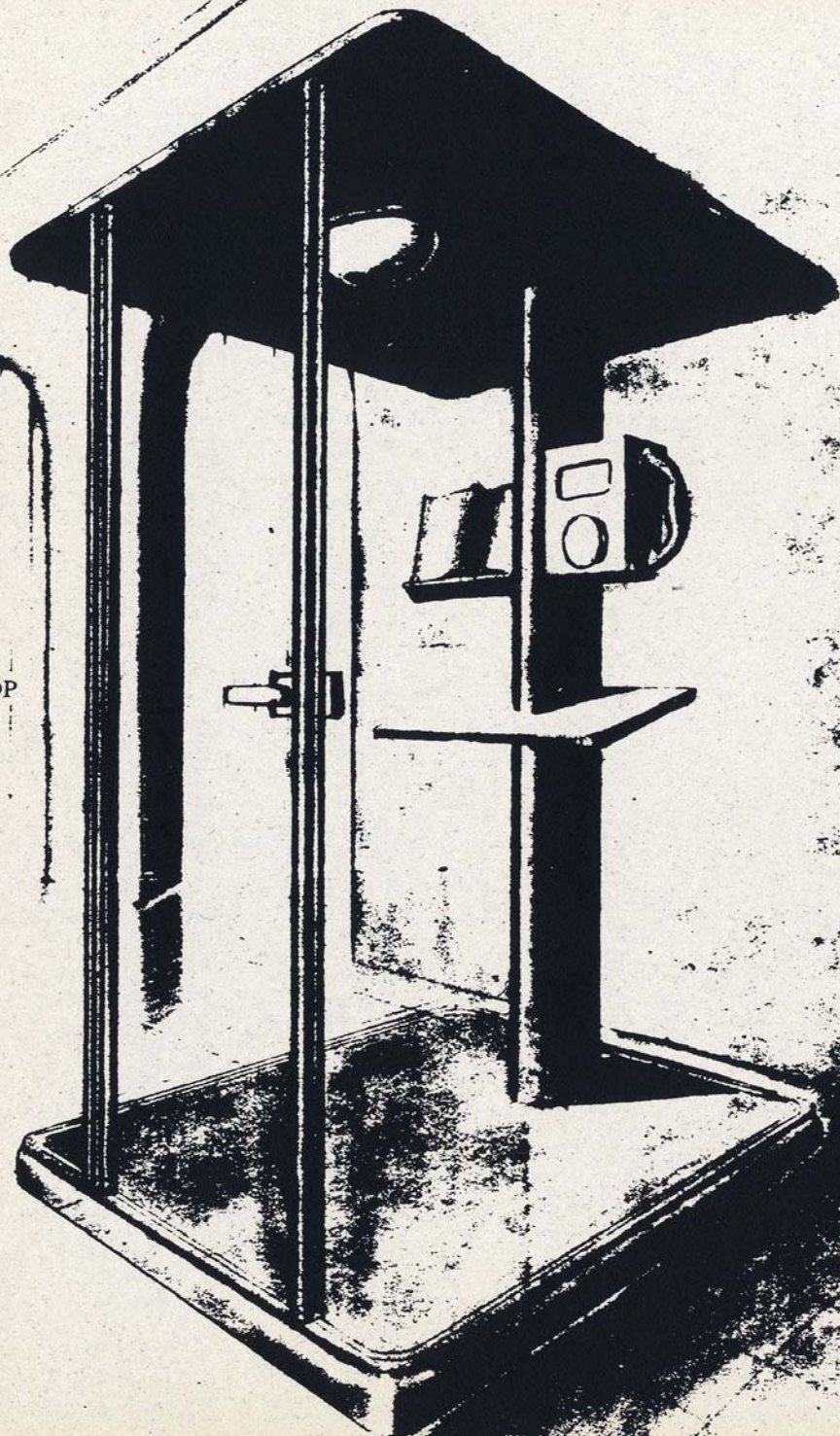
© 1950 ATeliers JEAN PROUVE  
 Tous droits réservés. Toute réimpression sans autorisation est formellement interdite.

261 57

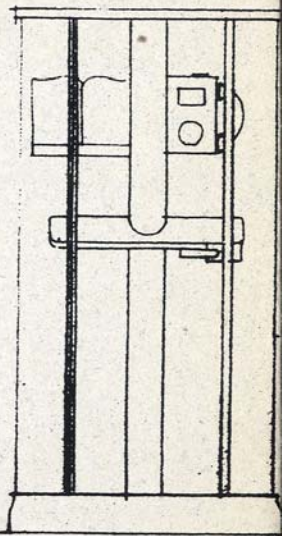
Quantité	Intégration	Année	de Service	Motivations
N°	Nom/Prénoms	Sexe	N°	Nom/Prénoms
Nom Prénoms N° de l'élève				
ATELIERS JEAN PROUVE				PUPITRE SCOLAIRE DEUX PLACES 555 554



74 DP

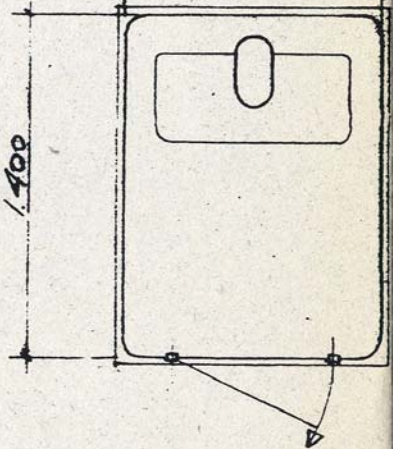


2.120



1.050

1.400



CABINE  
TELEPHONIQUE

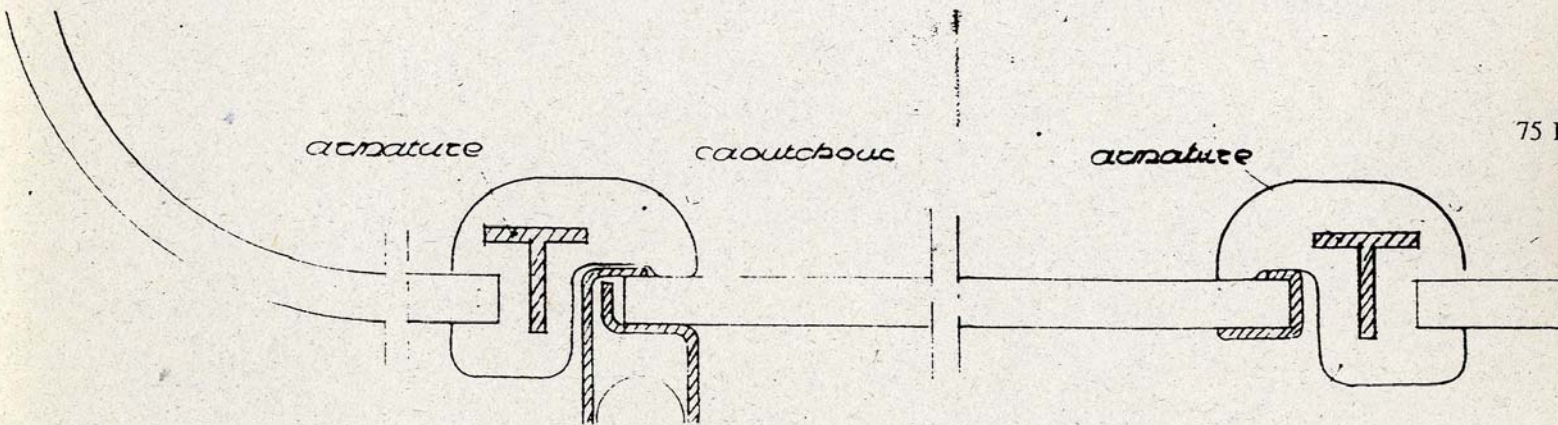


armature

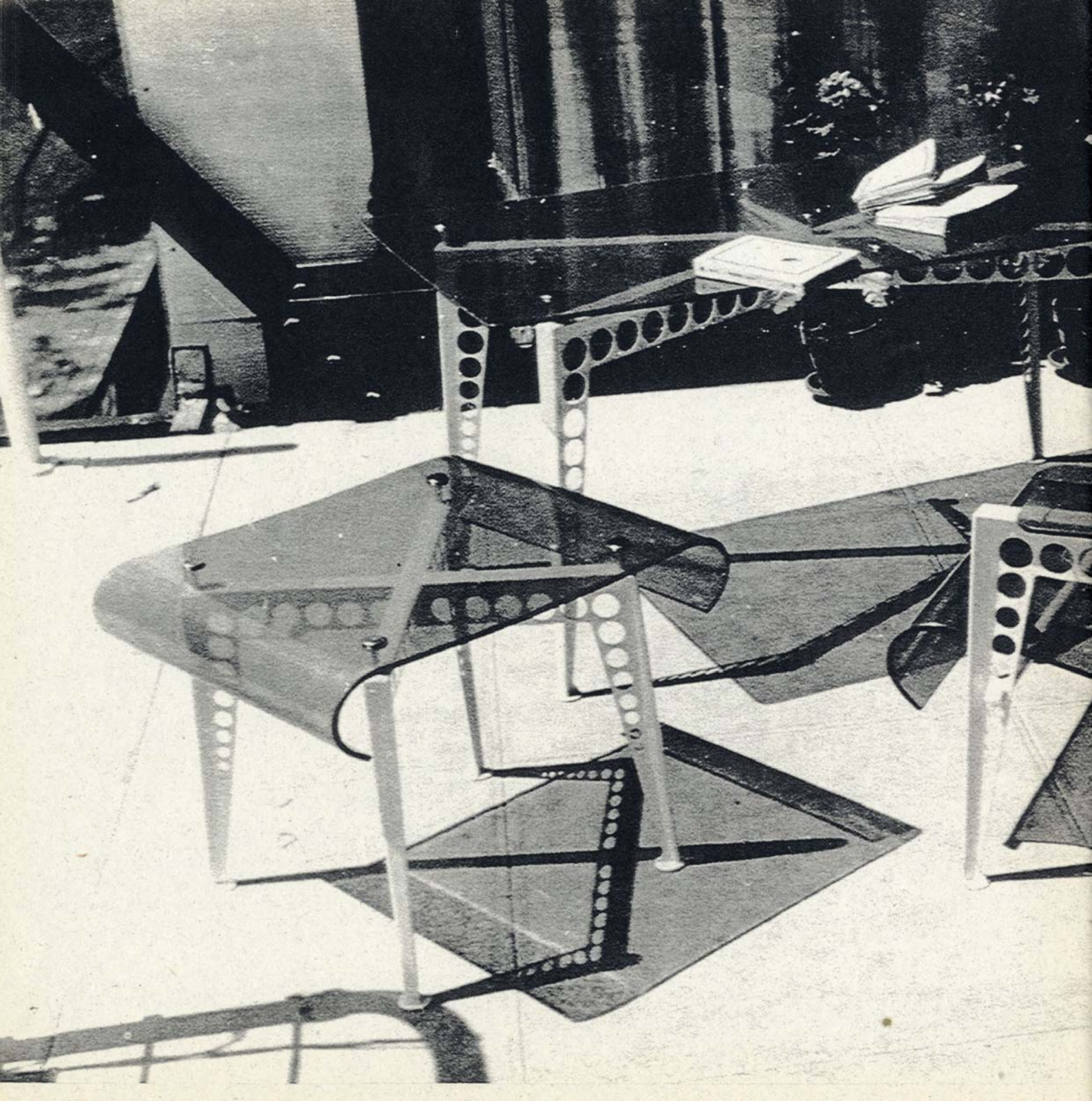
caoutchouc

armature

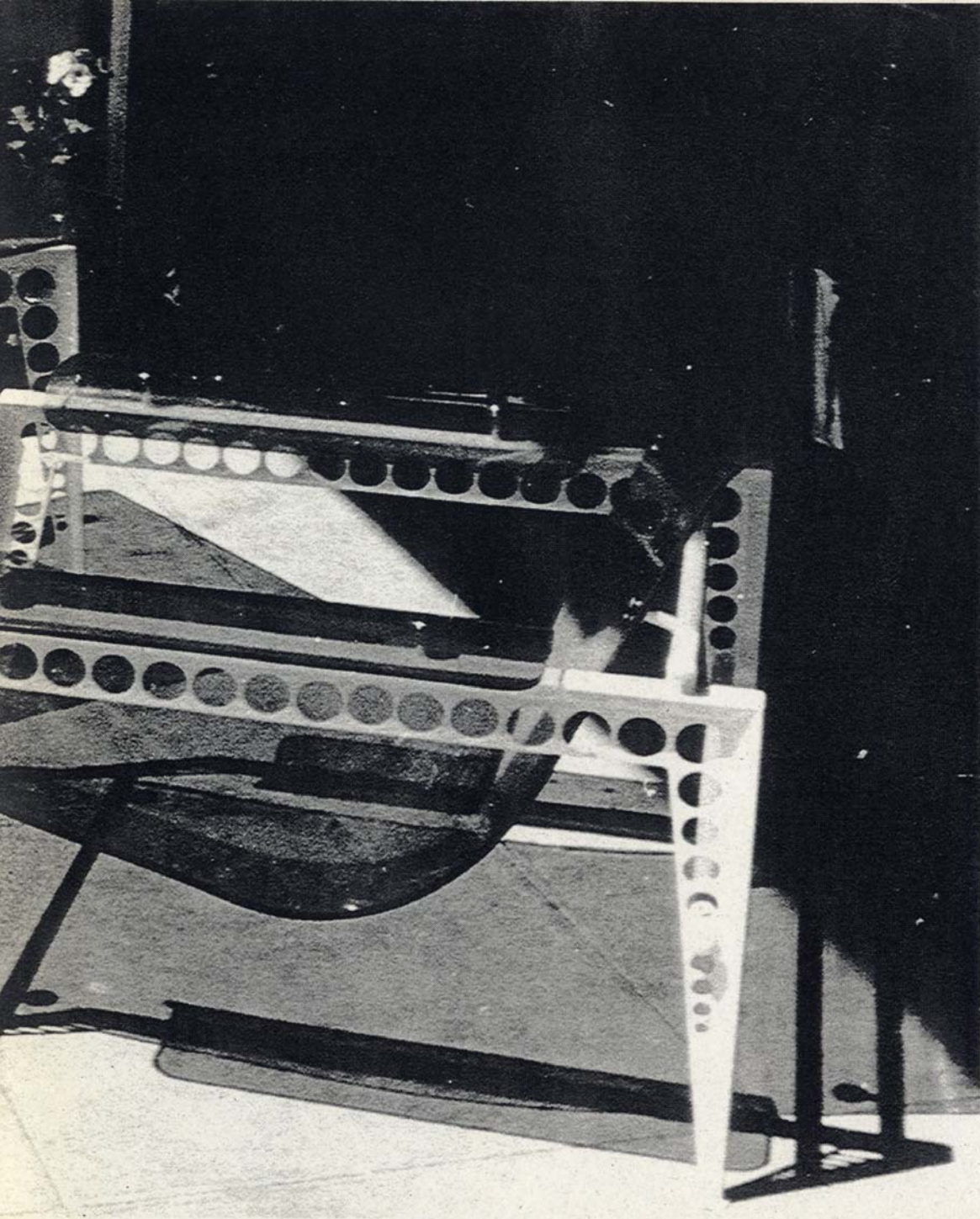
75 D











77 D

Sofà i taules d'acer plexiglas, realitzats pel pavelló de l'UAM de l'exposició internacional de Paris , 1937.



78 DP

Sofà amb seient i respatller inclinable amb l'estructura en xapa d'acer ,1925.

