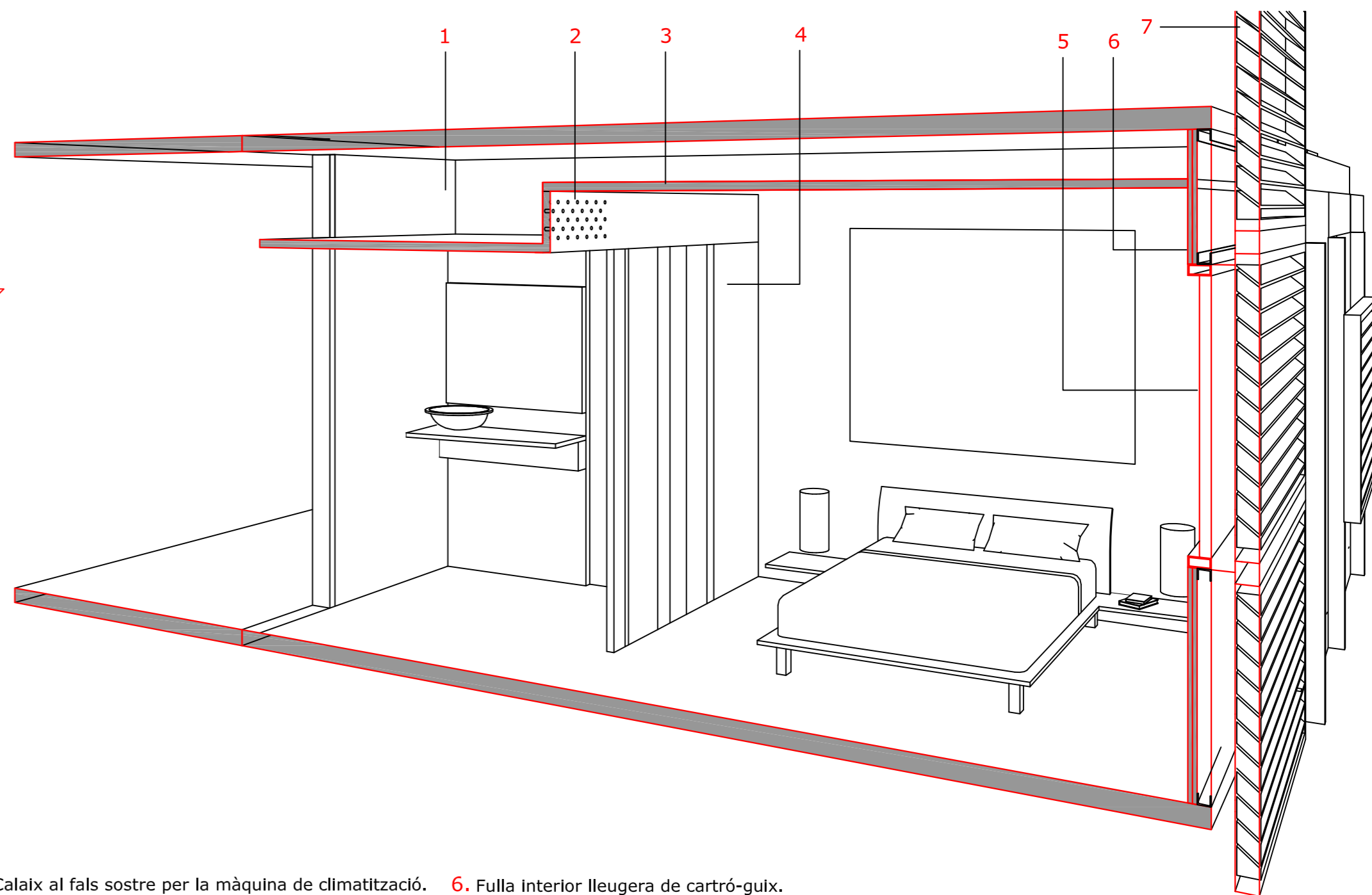
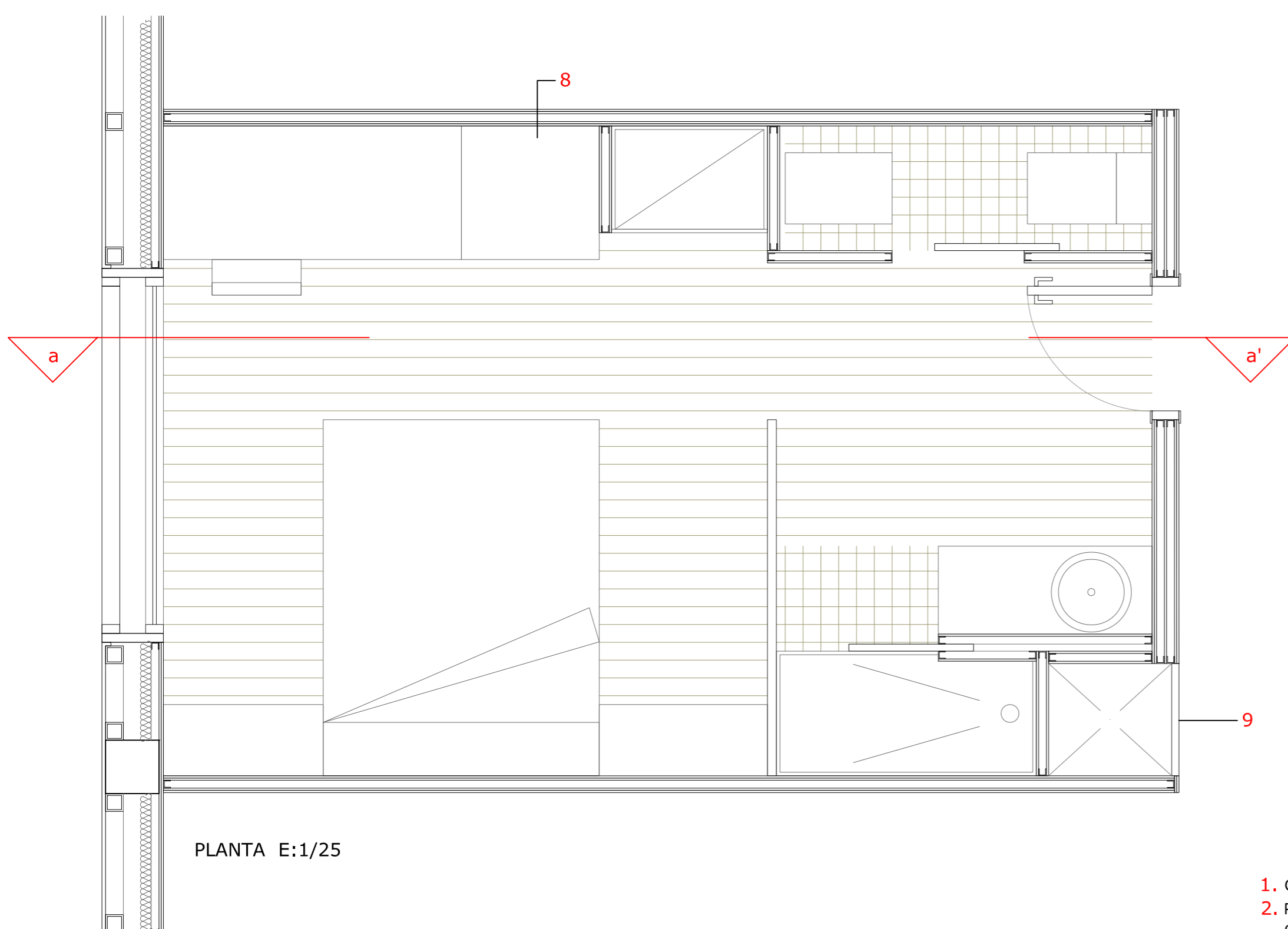
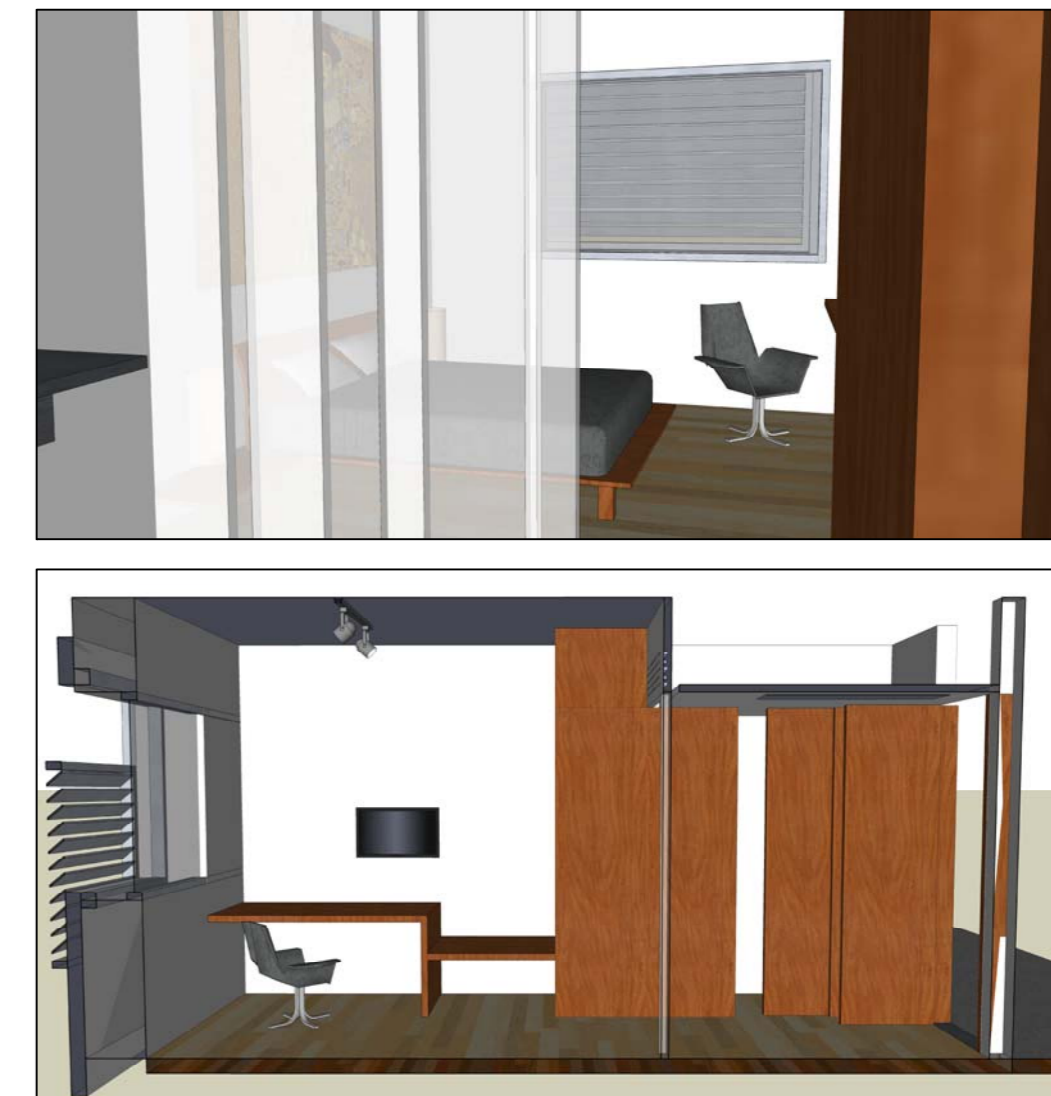
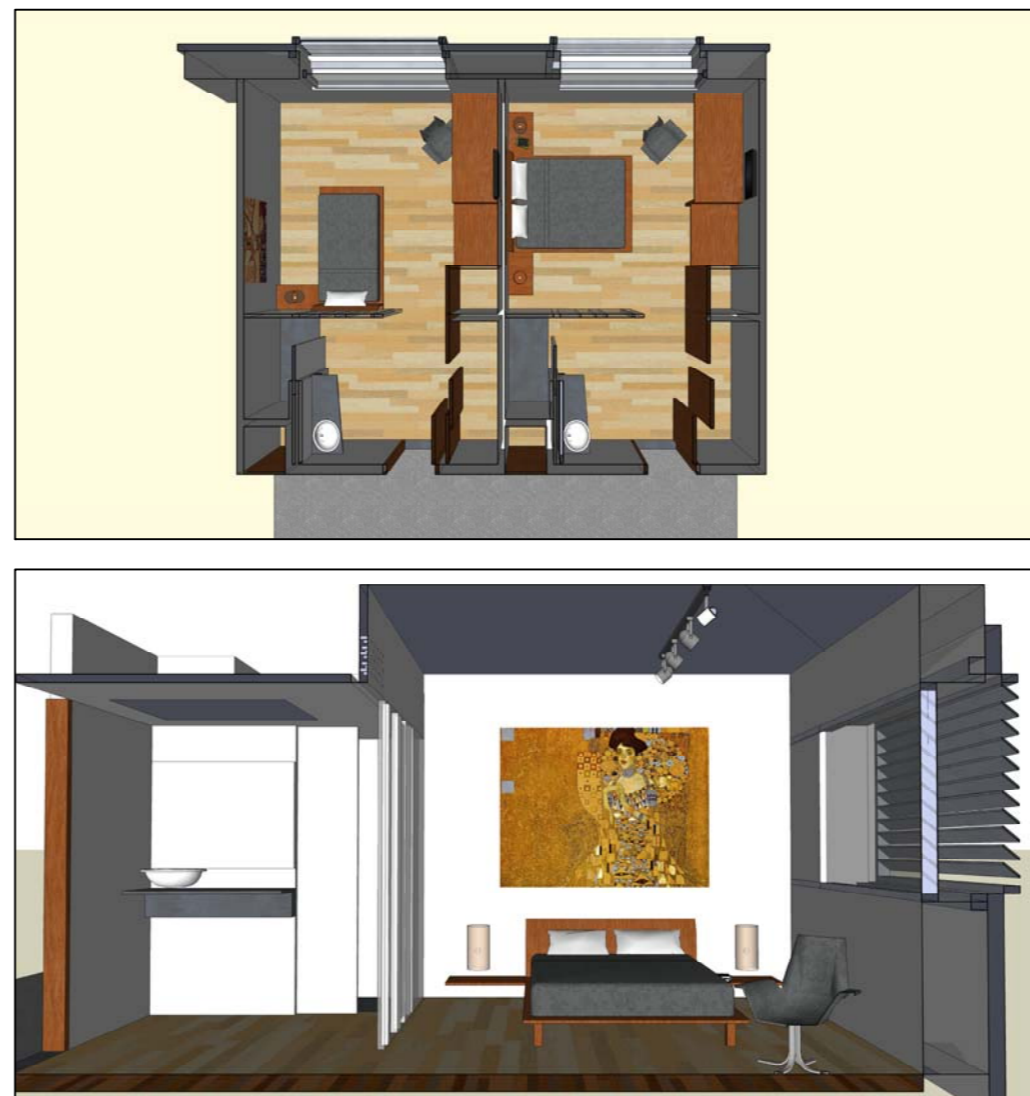
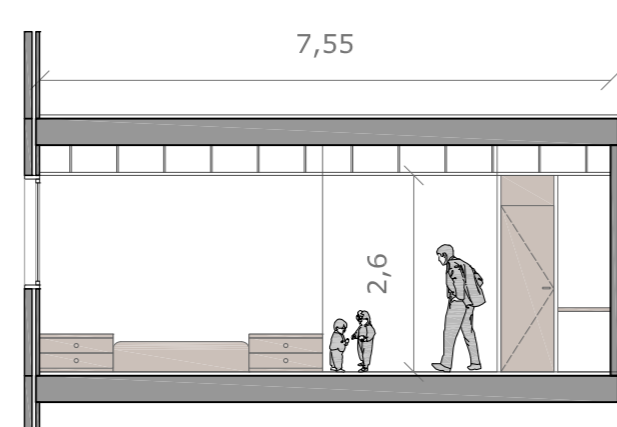
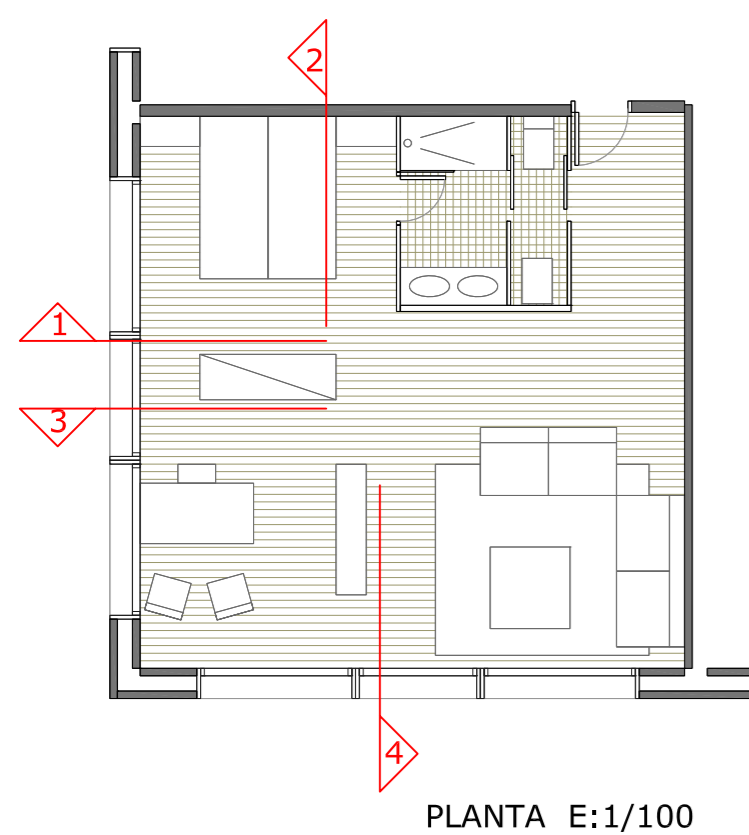


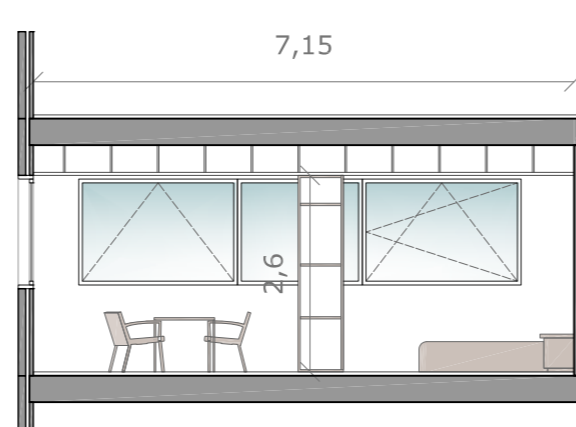
TIPOLOGIES PLANTA TIPUS				
TIPOLOGIA	QUANTITAT	SUPERFICIE BANY	SUPERFICIE DORMITORI	SUPERFICIE TOTAL
TIPOLOGIA 1	1	5,96 m <sup>2</sup>	10,68 m <sup>2</sup>	52,56 m <sup>2</sup>
TIPOLOGIA 2	27	4,62 m <sup>2</sup>	12,38 m <sup>2</sup>	20,26 m <sup>2</sup>
TIPOLOGIA 3	1	6,84 m <sup>2</sup>	12,38 m <sup>2</sup>	26,92 m <sup>2</sup>
TIPOLOGIA 4	2	6,00 m <sup>2</sup>	11,34 m <sup>2</sup>	25,92 m <sup>2</sup>
TIPOLOGIA 5	1	5,40 m <sup>2</sup>	15,47 m <sup>2</sup>	26,83 m <sup>2</sup>



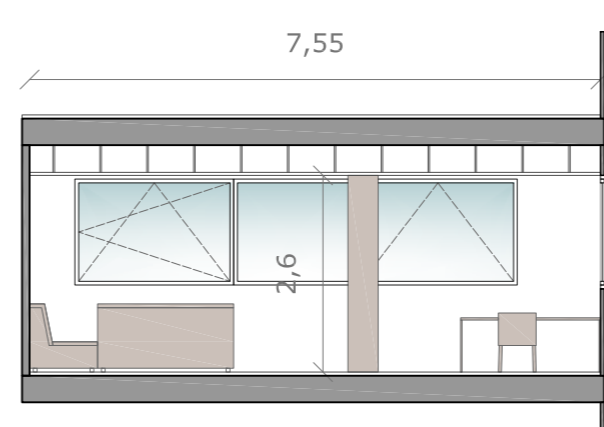
1. Calaix al fals sostre per la màquina de climatització.
2. Placa de cartró guix foradada, per l'extracció del aire climatitzat.
3. Fals sostre de cartró-guix.
4. Envà de vidre que combina parts translúcides i transparents segons el grau de privacitat requerit.
5. Fusteria d'alumini d'una fulla oscil·lobatent.
6. Fulla interior lleugera de cartró-guix.
7. Fulla exterior lleugera, de lames fixes d'alumini.
8. Repisa de fusta per col·locar les maletes.
9. Tancament abatible de policarbonat amb fluorescent interior, que fa de porta pel patinejo d'instal·lacions i de lampada pel passadís.



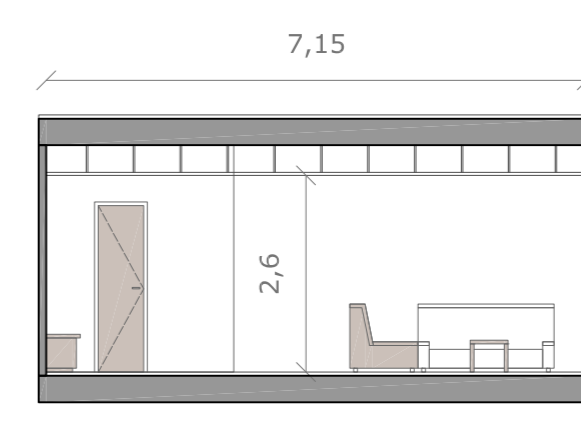
ALÇAT 1 E:1/100



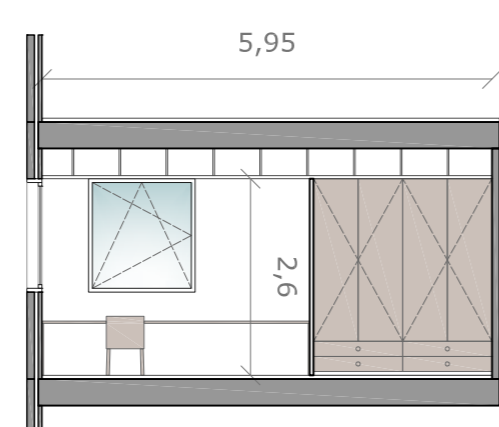
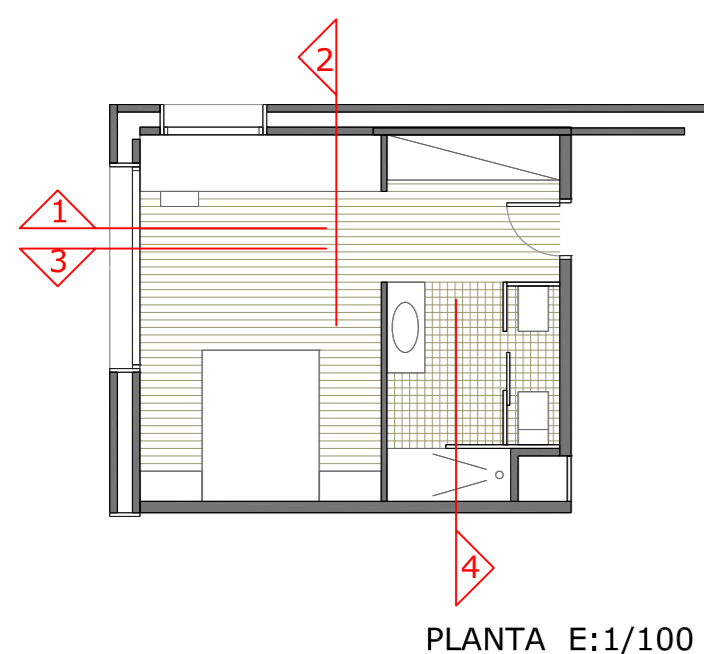
ALÇAT 2 E:1/100



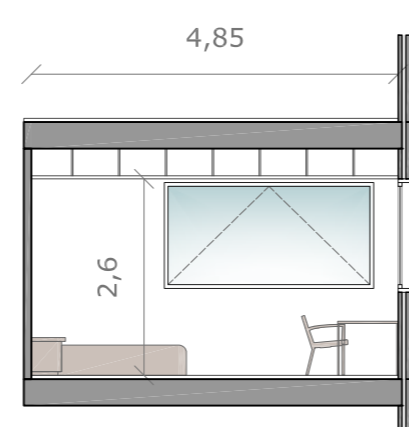
ALÇAT 3 E:1/100



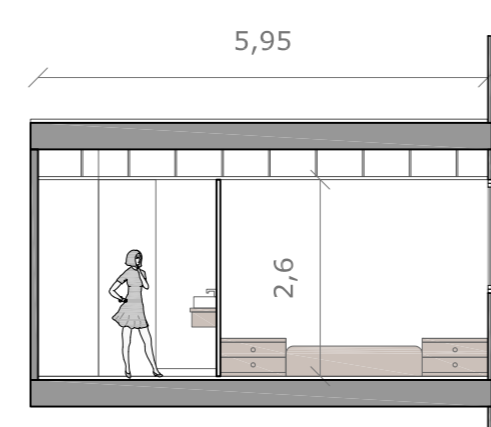
ALÇAT 4 E:1/100



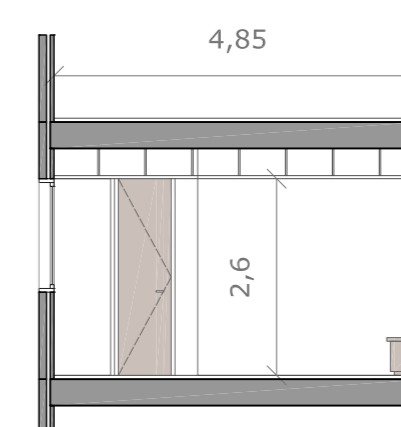
ALÇAT 1 E:1/100



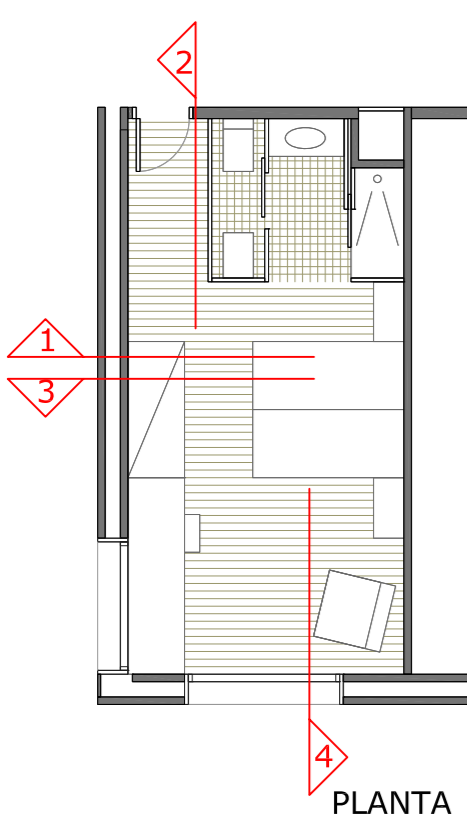
ALÇAT 2 E:1/100



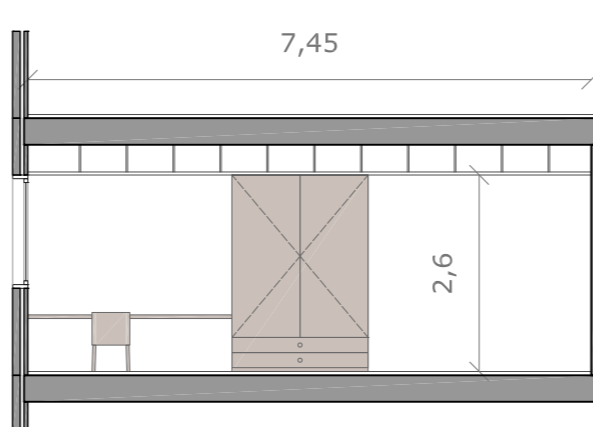
ALÇAT 3 E:1/100



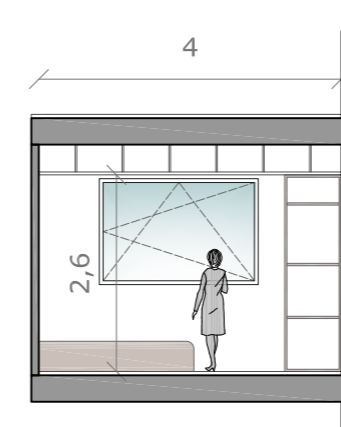
ALÇAT 4 E:1/100



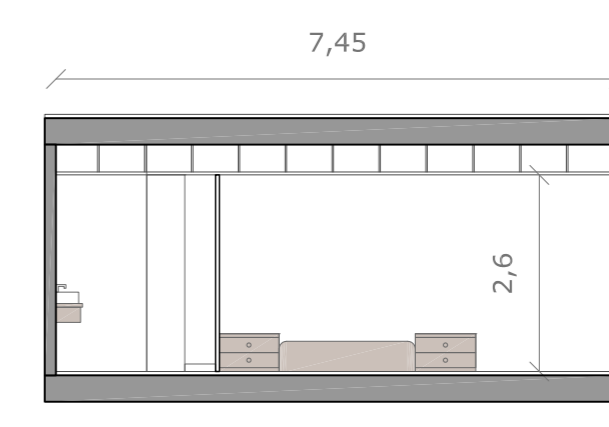
ALÇAT 1 E:1/100



ALÇAT 2 E:1/100



ALÇAT 3 E:1/100



ALÇAT 4 E:1/100