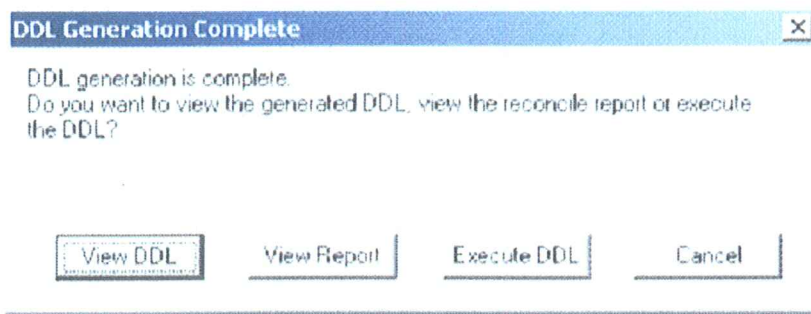


4th step

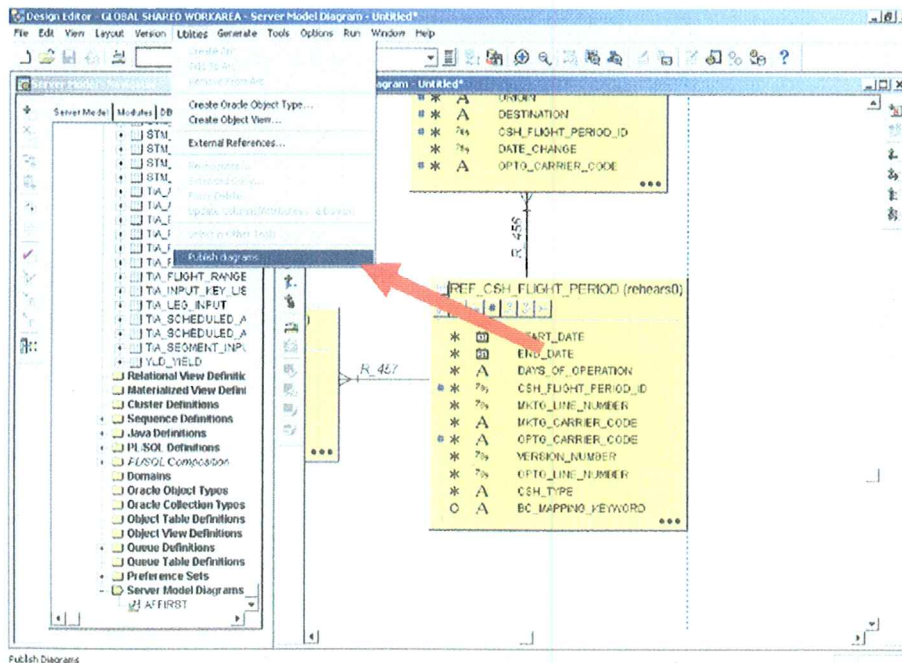


After that, the scripts are already generated, and with the "Patch Delivery" tool, is possible to transform the scripts and generate a proper delivery to Data center of Amadeus in Germany.

Generating outputs for "Publish Data Models"

In this use case, there are two subsections, the first one is to store the graphic file of a small part of a Model. The second one, is just to store the scripts of creation for all the objects of this set of tables. We need the generation of this two outputs, because overlooking the "SchemaSpy" tool (forward in this report), is needed to have both in order to publish the users diagram.

1st step



The Diagram must be saved in the Oracle Designer Repository. (In the example above, you can see the AFFIRST Diagram stored on the left down zone of the picture). Then selecting